

Wesley

Water Wise Landscape Rebate Program
in Santa Barbara County

A program to increase landscape water efficiency by providing incentives for changing the accepted "norm" in landscape irrigation technology and design.

Application to U.S. Bureau of Reclamation
for a WaterSMART
Water and Energy Efficiency Grant for FY 2014
under funding opportunity #R14AS00001

Submitted on 01/22/2014 by
Santa Barbara County Water Agency
130 E. Victoria St.
Santa Barbara, CA 93101-2019
Project Manager: Len Fleckenstein
LFlecken@cosbpw.net
(805) 568-3545; fax 805-568-3434

RCVD AOG 23JAN'14

1 AM 11:51

TABLE OF CONTENTS

Application for Federal Assistance: Form SF424	Attached
Assurances Form: SF 424B	Attached
Technical Proposal	<u>Page Number</u>
- Executive Summary	3
- Background data	3
o Map of Project Location	Attached
o Water Sources; Delivery	3
o Relationship with Reclamation	4
- Technical Project Description	5
o Description of Program Operation	
- Evaluation Criteria	8
o Water conservation	8
o Reasonableness of Costs	12
o Energy-Water Nexus	12
o Endangered Species	13
o Water Supply Sustainability	14
o Implementation & Results	16
o Project Planning	16
o Non-Federal Funding	16
o Connection to Reclamation Projects	16
o Readiness to Proceed	17
Performance Measures	18
Environmental Compliance	18
Required Permits and Approvals	19
Project Budget	20
- Funding Plan	20
- Table: Federal & Non-Federal Funding	21
- Budget Proposal	21
o Summary Table of Funding Sources	
o Table of Budget Proposal	
- Budget Narrative	23
- Budget Form SF424A	Attached
Commitment Letters	
- Letters from water providers	Attached
- Resolution by County Board	Attached

TECHNICAL PROPOSAL

Executive Summary

Applicant: Santa Barbara County Water Agency
Location: Santa Barbara, Santa Barbara County, California
Date Submitted: 01/22/2014

Summary:

Water purveyors participating in Santa Barbara County's "WaterWise Landscape Rebate Program" will offer rebates to their customers to increase water efficiency in their landscapes. The program will provide water savings by reducing outdoor water usage through measures which will include new technology and actions such as: turf removal, smart irrigation controllers (weather or soil moisture based), high efficiency nozzles (sprinkler heads), and other means of ensuring water wise landscapes and efficient irrigation systems. The County Water Agency will coordinate the program which will be implemented in seven (7) participating water purveyor service areas, most of which are highly dependent on USBR's Cachuma Project for ensuring adequate water supplies. Each purveyor will ensure that landscape improvements are made in conformance with program criteria and will measure water usage before and after implementation, thus quantifiably measuring and determining sustained water savings.

Timeframe: The project will last for 2 years, ending 24 months after the start date.

Federal facility role: The project will not be located on any Federal facility.

Background Data

Map of Project Location: See attached pdf file with map; colored areas are service areas of participating water providers.

Water Sources: The County's residents obtain most of their potable water from three sources: storm runoff collected in reservoir systems (~40%), groundwater withdrawal (~28%), and the SWP (~27%). The Cachuma Reservoir is by far the main surface water reservoir in the County. Downstream discharges from Cachuma Reservoir are also a major contributor to groundwater recharge for communities (Santa Ynez, Solvang, Buellton, and Lompoc), agriculture, and private homes and ranches along the lower Santa Ynez River. Moreover, the State Water Project is also linked to Cachuma, which is the end of the SWP pipeline within Santa Barbara County. SWP water is stored in Cachuma until it is pumped to the County's south coast communities (Goleta, Santa Barbara, Montecito, Hope Ranch, and Carpinteria).

Water Delivery. The county's potable water supply is delivered to the public through a variety of water purveyors: incorporated cities, community service districts, water districts, public utility companies, and conservation districts. Landscape water efficiency is customer dependent and based on the type and age of irrigation system, how it is maintained, and the degree of irrigation management used. Field data throughout the county indicates an overall DU average of 70-75% for agricultural irrigation systems and 50-54% for turf. However, these values can be much lower for individual sites.

Relationship with Reclamation. SBCWA is the master contractor for USBR's Cachuma Project, which is the primary water supply source for many water purveyors in the County, especially for a majority of residents who reside in the water provider service areas impacted by this proposed project. Although SBCWA holds the master contract with Reclamation, the Agency does not have a direct entitlement to Cachuma Project water. Entitlements under the master contract are held for the Member Units, each of which has a defined share of Cachuma Project production. The Member Units participating in this project are the Cities of Santa Barbara, Goleta Water District, and Carpinteria Valley Water District. The additional grant project participants (the cities of Solvang, Buellton and Lompoc along with Vandenberg Village CSD) are downstream of the Bureau's Cachuma Project where groundwater supplies are recharged by flows from the Cachuma Reservoir.

Under the County's agreement with USBR, SBCWA coordinates a Regional Water Efficiency Program (RWEF) which was established in December 1990 to promote the efficient use of water supplies in Santa Barbara County, and to provide information and assistance to the eighteen local water purveyors within the county. The RWEF provides coordination for cooperative efforts among purveyors, acts as a clearinghouse for information on water efficiency technology, and monitors local, state and national legislation concerning efficient water use. The RWEF serves around 400,000 county residents. A number of the RWEF's activities fulfill - on a regional level - the obligations for Best Management Practices (BMP's) in the statewide California Urban Water Conservation Council (Council) Memorandum of Understanding (MOU) and/or the Bureau of Reclamation's water conservation criteria. The County Water Agency is a signatory to the MOU and has prepared a plan to meet the Bureau's water conservation criteria. Many of the regional activities also assist individual water purveyors to satisfy their own conservation goals under the MOU and Bureau Criteria.

SBCWA has had numerous grants from Reclamation over the past two decades, although the Agency has no such grants at present. Each past grant has been very helpful in improving water efficiency and in building a collaborative regional water efficiency program in Santa Barbara County.

Technical Project Description

The Santa Barbara County Water Agency (SBCWA) and participating local water purveyors within the County propose to cooperate on a regional program to offer rebates to all non-agricultural customers for a variety of landscape related water efficient upgrades.

Water purveyors participating in Santa Barbara County's "WaterWise Landscape Rebate Program" will offer rebates to their customers to increase water efficiency in their landscapes. This program will be modeled after a prior successful program and aims to improve upon this program by overcoming design obstacles for customers. It was found that a large barrier for participants who were interested in receiving a rebate and wanted to take part in the program did not know where to start. Adding a design component to this program will give customers a starting point from which they can have a plan of action to implement a water wise landscape. Rebates would be awarded for 50% of the cost of approved equipment and materials, up to \$1000 for residential properties or up to \$2000 per meter/ \$4000 per facility for commercial properties. Cash for grass type rebates would also have the same funding limits. Within the \$1000 rebate, a customer can receive a rebate for 50% of landscape *design* costs, up to \$250. No general labor will be rebated. The inclusion of landscape design assistance is meant to help customers receive expert advice to plan and design their landscape, overcome knowledge barriers a customer may have, and increase the number of customers who complete landscape retrofits. Projects that do not conserve water would not be eligible for any rebate.

The USBR will fund 50% of customer rebates, matched by the cash from local water purveyors. USBR funds are not based on labor or other in-kind match provided by the water purveyors. USBR grant funds will be available on a first come first served basis for participating purveyors who have the cash match.

Participation in the Water Wise Landscape Rebate Program is voluntary on the part of customers. Rebate amounts must be approved by participating purveyors before the start of each project, as part of a water conservation evaluation by the water provider. Rebates will require sales receipts, invoices, and/or before and after photos to verify project completion. Due to the diversity in size and staffing of the participating water purveyors, each provider may have a slightly different approach for pre and post inspection and rebate approval. Some purveyors with limited conservation staff may rely on pre and post photo inspection and cash for grass programs whereas districts which can perform evaluations will perform pre and post evaluations before issuing rebates.

Description of Program Operation:

Which customers are eligible for the program?

- Any non-agricultural customer of a participating water provider is eligible, including schools and other public facilities.
 - Participation in program is voluntary.

- Purveyor determines customer's eligibility to participate. Applicants must be a water customer for the past 12 months, must have living landscape that is not water wise (dead grass or already low water use landscapes are not eligible). Each purveyor can set its own eligibility criterion which is *at least as strict as the general program eligibility requirements*.

What is Eligible for Rebates?

- Only retrofitted/replaced items are eligible for rebates; no new items will be eligible that are not replacing the same kind of item, unless they are part of a major system-wide or process change pre-approved by water purveyor staff.
- Approaches to landscape water conservation will vary by customer and items eligible for rebate will vary by purveyor. Examples include, *but are not limited to*:
 - High efficiency irrigation (smart controllers, rotating nozzles, drip line etc.)
 - Water wise or drought tolerant plants
 - Removal of turf areas (cash for grass)
 - Dedicated landscape meters, in place of mixed master meters
 - Rain barrels or tanks and associated equipment
 - Rain gardens and associated equipment
 - Mulch or other groundcover
- Landscape design services will also be eligible for rebate to assist the customer in planning their landscape retrofit. This will help overcome common hurdles that are often a barrier to project completion and will help assist customers in designing water efficient landscapes. General labor for project implementation will not be covered by the rebate.

How Much Is The Rebate:

The program covers a portion of the cost of approved eligible items, such as certain equipment, landscaping materials, etc.

- The rebate amounts will not exceed 50% of the products/items eligible for rebate.
- Rebates may be set dollar amounts based on square footage of landscape converted (cash for grass).
- The rebate can cover up to 50% of design costs for the new landscape, up to a design cap of \$250, which is included in the maximum rebate for each customer.
- Landscape retrofits may qualify for a maximum rebate of \$1,000 per residential customer or \$2000 per commercial meter and \$4000 per facility. However, any participating water purveyor may set a lower limit on rebate amounts and may allow only some of the equipment and/or materials to be eligible, e.g. 'cash for grass' only or some other factor not to exceed the limits stated above.

How the WaterWise Landscape Rebate Program will work:

Evaluation component:

- Purveyor determines customer baseline water usage
- Purveyor staff, or for large turf areas, the Cachuma Resource Conservation District schedules & conducts on-site visit/evaluation or photo/ written assessment of property.
- Purveyor approves the customer's landscape plan with list of eligible water conserving items/actions and dollar amount(s) for possible rebates, subject to verification that the water-efficient items or actions are implemented. The

purveyor will stipulate a time period during which the installation/implementation must occur in order to be eligible for a rebate.

Verification component:

- Purveyor performs post-installation inspection to ensure appropriate installation of pre-approved products/items. Purveyors with limited staffing may perform the evaluation and verification via submitted photographs and landscape plans.
- Purveyor reviews receipts to determine amount eligible for rebates.
- Purveyor enters and maintains data on retrofits and costs.

Rebate issuance:

- The customer must request rebates using whatever form or format is deemed appropriate by the water purveyor.
- Purveyor reviews customer's rebate request and issues rebate check(s).
- Purveyor invoices the County WA for only 50% of total rebate amounts.
- WA sends reimbursement check to purveyor quarterly.

Grant Reporting:

- Purveyor sends quarterly progress reports and cost/rebate data to WA using agreed-upon forms/formats.
- Purveyors' data includes staff costs and other costs
- Purveyors must ensure their expenditures meet or exceed the grant agreement's "local match" requirement.
- WA compiles data into a single progress report to USBR
- WA compiles cost/rebate data into financial report to USBR
- WA invoices USBR for reimbursement for payments made to purveyors.

Data Tracking:

Purveyors track participating customer's monthly water usage at the end of the grant period;

Purveyors report water usage data to WA for reporting to USBR.

Outreach:

Outreach for the new WaterWise Landscape Rebate Program will build on lessons learned from the SLRP by taking the following approach:

- Identifying highest water using customers;
- Compiling information on water usage and costs incurred by those customers;
- Communicating water usage and cost information directly with residents, commercial property owners, and school and park administrators;
- Promoting the program through landscape designers, who can help clients address typical roadblocks and see projects to completion;
- Posting information on the WaterWise Landscape Rebate Program on our regional water efficiency website www.WaterWiseSB.org.

Water Agency matching funds will be used for outreach and training in support of the program. This includes advertising and public workshops to promote the program and educate participants, as well as trainings and misc. support for water providers to help build skill sets for employees to perform landscape evaluations.

EVALUATION CRITERIA

Water Conservation

Quantifiable Water Savings:

This program is estimated to save 121 AF/year, shown in Table 1. Estimated water savings were calculated based on an analysis of monthly water use data from participants in a previous *Smart Landscape Rebate Program*. Data from the previous program, which is similar to that proposed here, compared 12 months of post-project water use to 12 months of pre-project baseline water use for each customer, wherever 12 months of pre and post project data was available. Of 289 unique rebates issued, 207 met our analysis criteria and provided a case by case assessment of water savings. Average water savings data from this analysis for each participating provider is shown in Table 2. Since most projects varied considerably in scale and used a variety of conservation technology and/or plant materials, the number of acre feet conserved by each specific technology employed on each project (e.g. turf removal vs. installation of rotating nozzles, etc.) cannot be distinguished.

Table 1. Average annual water supply and projected water savings.

Agency	Average Annual Water Supply during 2010- 2012 (AF)	Estimated Amount of Water Conserved (AF)	Percent Water Conserved
City Santa Barbara	13,310	31	0.23%
Buellton	1,203	10	0.80%
Carpinteria Valley WD	4,161	8	0.18%
Goleta WD	12,284	38	0.31%
Solvang	1,417	17	1.22%
Lompoc	4,559	11	0.23%
Vandenberg Village CSD	1,483	7	0.44%
Total	38,418	121	0.32%

Table 2. Summary Water Savings from Smart Landscape Rebate Program

Water Provider	Number of Unique Rebates issued	Average Water conserved for each rebate (AF)	Annual Water Conserved (AF)	15 Year Lifetime Water Conserved (AF)
Santa Barbara	166	0.16	27.2	407.7
GWD	70	0.89	62.5	938.0
CVWD	26	0.28	7.4	110.5
VVCS	24	0.12	2.9	43.6
Lompoc	3	0.35	0.1	14.9
Total	289	0.35	100.1	1,514.7

For the proposed project, a similar analysis of pre and post project monthly water use data will be performed to measure actual water savings and compare against estimated water savings.

To generate credible estimates for our proposal, we used a combination of data from our previous *Smart Landscape Rebate Program*, along with water provider data. The estimated # of rebates is shown in Table 3 and was generated using the following calculation:

$$\text{Estimated \# of Rebates for each participating provider} = \frac{\text{Total rebate \$ available}}{\text{Average rebate \$ per project}}$$

For this calculation, total rebate dollars available from each local participant and USBR match was used, along with the average rebate amount of \$728 was used from the previous *Smart Landscape Rebate Program*. Note that the estimated number of rebates have been rounded to the nearest whole number.

Table 3: Rebate amounts and estimated number of rebates.

Agency	Total Rebate \$ Available	Avg Rebate	Estimated # of Rebates
City of Santa Barbara	\$ 140,000	\$ 728	192
City of Buellton	\$ 20,000	\$ 728	27
CVWD	\$ 20,000	\$ 728	27
Goleta Water District	\$ 80,000	\$ 728	110
City of Solvang	\$ 36,000	\$ 728	49
City of Lompoc	\$ 22,000	\$ 728	30
Vandenberg Village	\$ 40,000	\$ 728	55
Totals	\$ 358,000		492

Calculations for estimating annual water conserved for each participating provider, shown in Table 4, followed the formula:

$$\text{Annual Water Conserved} = \text{Average AF saved per project} * \text{Estimated \# of rebates}$$

Table 4: Estimated water savings per project, number of rebates, and annual water savings.

Agency	Estimated Water Savings/ project (AF)	Estimated number of Rebates	Estimated Annual Water Savings
City of Santa Barbara	0.16	192	31
City of Buellton	0.35	27	10
CVWD	0.28	27	8
Goleta Water District	0.35	110	38
City of Solvang	0.35	49	17
City of Lompoc	0.35	30	11
Vandenberg Village	0.12	55	7
Totals	0.25	492	121

To estimate the average AF saved per project for each participating water provider, we used each providers average project water savings data from our previous *Smart Landscape Rebate Program*, based on the following considerations:

- *Provider specific average AF savings:*
 - City of Santa Barbara
 - City of Lompoc
 - Carpinteria Valley WD
 - Vandenberg Village CSD

- *Program average AF savings:*
 - City of Buellton
 - City of Solvang
 - Goleta Water District

The Cities of Buellton and Solvang were not in our previous SLRP, so we used the previous program average for their estimates. The Goleta Water District did participate in the previous program but had very high per project water savings (0.89 AF/project) due partly to high participation among home owner associations. We do

not expect this value to be achievable again and choose instead to conservatively apply the program average savings for Goleta Water District projections.

The 2010-2012 average annual acre feet of water supply for the participating water providers is found in Table 1, along with the percentage estimated to be saved by the proposed project.

Water that will be conserved by this project would currently be lost through a variety of pathways; including water lost to evaporation due to inefficient overhead water practices, water lost to urban runoff due to overwatering and poorly managed irrigation, and excessive water lost to transpiration from high ET plants such as turf grass. Only water that is lost below the root zone due to overwatering is currently 'recoverable' water. The majority of the water that will be conserved via this project is currently lost to either evapotranspiration or to storm drains and the ocean while a small percentage of water would infiltrate into the groundwater table.

Water conserved by this project will remain in local surface water reservoirs such as Lake Cachuma, remain within local groundwater basins, or be water that is not requested via the State Water Project. These savings will help reduce pressure on local and statewide water supplies and provide additional buffer during times of drought.

Landscape Irrigation Measures:

Outdoor water use will be reduced by implementing a variety of proven water conservation technologies. Participating water providers will review and approve specific projects based on submitted water conservation project plans. Most water providers will perform on site pre-inspections while some dealing with 'cash for grass' type projects may accept pre-project photos or 'drive by' pre-project evaluations prior to approval. The types of technology that could be approved include, but are not limited to:

- High efficiency irrigation (smart controllers, rotating nozzles, drip irrigation, etc.)
- Water wise or drought tolerant plants
- Removal of turf areas (cash for grass)
- Dedicated landscape meters, in place of mixed master meters
- Rain barrels or tanks and associated equipment
- Rain gardens and associated equipment
- Mulch or other groundcover

As in the previous *Smart Landscape Rebate Program*, these options provide flexibility for customers to reduce water use in ways most appropriate to their needs. By including a program element that will support professional landscape designers and architects within the planning stages, we believe this will result in landscape retrofit plans that more effectively save water, as well as assisting customers overcome common hurdles that are often a barrier to project completion.

Percentage of Total Supply:

The percentage of total water supply conserved by this project was calculated by the following formula and is shown in Table 1:

Estimated Amount of Water Conserved / Average Annual Water Supply

Reasonableness of Costs:

Reasonableness of cost is an important metric to consider for the use of federal and local funding. Cost per acre foot conserved over the project life was calculated using the following formula:

*Total project cost / (Acre Feet Conserved * expected life expectancy of projects)*

Life expectancy of projects will vary but based on industry accepted life expectancy, we assumed a 15 years average project lifespan. A summary table showing project cost, annual water savings, and cost per acre foot is shown in Table 5:

Table 5: Projected costs, water savings, and cost per AF over project life

Agency	Total Project Cost (\$)	Annual Water Savings (AF)	Total Cost/AF over 15 year project life
City of Santa Barbara	\$ 231,939	31	\$ 503
City of Buellton	\$ 25,611	10	\$ 178
CVWD	\$ 30,172	8	\$ 261
Goleta Water District	\$ 155,895	38	\$ 270
City of Solvang	\$ 55,587	17	\$ 214
City of Lompoc	\$ 28,541	11	\$ 180
Vandenberg Village CSD	\$ 47,564	7	\$ 481
Totals	\$ 575,310	121	\$ 317

Note, total project cost includes water provider cash and staff contributions, USBR rebate match, and a prorated cash match from SBCWA based on the % of local match each provider has committed to.

Energy-Water Nexus:

Increasing Energy Efficiency in Water Management

Water conservation by urban water supplier's results in a direct saving of energy used to transport, treat, and distribute water. As shown in tables 6 and 7 below, the energy saved varies significantly depending on supply source with imported water through the State Water Project consuming 2,919 kWh/AF, significantly more than groundwater or other sources. Where water providers can reduce potable demand, the more expensive and energy intensive water supply sources will often be the first

to be avoided, greatly reducing the energy embedded within potable water used by participating providers.

Table 6: Embedded energy in Goleta Water District potable water system, 2007.

Goleta Water District Embedded Energy 2007				
Water Production	AF	kWh	kWh/AF	kWh/gal
Surface Transport	10,409	-	-	-
Imported Transport	3,007	8,777,433	2,919	0.00896
GW Pumping	439	171,966	392	0.00120
Recycled Water	1,012	107,738	106	0.00033
Treatment	13,855	565,760	41	0.00013
Distribution	14,867	99,656	7	0.00002
Total Upstream	14,867	9,722,552	654	0.00201

Table 7: Embedded energy in the City of Santa Barbara potable water system, 2005.

Santa Barbara Embedded Energy 2005				
Water Production	AF	2005 kWh	kWh/AF	kWh/gal
Surface Transport	13,180	-	-	-
Imported Transport	890	2,597,910	2,919	0.00896
GW Pumping	882	50,066	57	0.00017
Treatment	12,714	606,320	48	0.00015
Distribution	13,538	1,536,979	114	0.00035
Total Upstream	13,538	4,791,275	354	0.00109

Tables from:

http://www.bren.ucsb.edu/research/documents/Synergy_FinalReport.pdf

Additionally, water supply for each provider varies each year depending on the best supply mix for them based on a range of considerations. For these and other reasons, calculating kWh/AF savings for each water provider over the life of the grant is not attempted here.

Benefits to Endangered Species:

Locally, federally endangered species such as the Southern Steelhead Trout (*Oncorhynchus mykiss*), Tidewater Goby (*Eucyclogobius newberryi*), and Red Legged Frog (*Rana draytonii*) will benefit from these projects in many ways. The listed species are all at risk due in part to alteration of natural stream flow patterns,

degraded water quality, and excessive sedimentation, all of which are impaired by surface water diversions, groundwater extraction, and urbanization.

All of the proposed grant funded landscape projects will improve the status of the species by reducing diversions of water from Lake Cachuma and/or local groundwater basins and improve natural flow patterns. Additionally, some of the landscape retrofit projects being promoted will include installation of rain gardens on residential and commercial properties. Rain gardens direct runoff from roofs and other hardscapes into on-site infiltration areas such as swales, reducing runoff and associated storm related pollution and improving groundwater resources through onsite infiltration of stormwater. While the benefits to the listed species will not be measured, the projects will address specific impairments and threats outlined in the recovery plans for these listed species, specifically; reduced diversions from the Santa Ynez River watershed, reduced groundwater pumping, improved groundwater recharge, and reduced peak flow, sedimentation, and urban runoff related pollution.

Water Supply Sustainability:

This kind of project is proven to increase water conservation and efficiency overall, regardless of a water purveyor's water sources. Among Cachuma Project member units and CCWA members, this project will reduce the demand for Lake Cachuma water and State water. Reduced water usage will mean increased carryover storage in Lake Cachuma, less demand for State Water Project water, and reduced draw-down of groundwater supplies, reducing long term potable water demand in Santa Barbara County.

The specific concern addressed by this new rebate program would be the need to reduce demand on the Cachuma Project, where the reservoir is being rapidly depleted under the current drought conditions. In past drought periods, the member units have more readily agreed to voluntary reductions in Cachuma drawdown, whereas the current drought has created competition among Cachuma Project member units for the remaining reservoir supply.

SBCWA has been concerned that previous assumptions may be incorrect regarding Cachuma's actual existing volume of water and hence how long that amount of water can serve the needs of member units. This concern is based on several changes in water demand since the last negotiated contract renewal, including:

- Increases in downstream releases for fish habitat, per the National Marine Fisheries Service's Biological Opinion;
- Increases in downstream releases under the Cachuma Project Settlement Agreement (WR89-18 releases) for downstream water rights holders;
- Increased sedimentation due to major large fires in the Cachuma watershed in the past 7 years.

Due to these concerns, the County is undertaking several studies and developing models to allow better estimates of existing supplies and longevity of those supplies. More specifically, the County is funding: an aerial and bathymetric study of the reservoir to have the best volumetric data; compilation of data on the full historical operations of the Project; determination of the reservoir's available yield; and a model to forecast when the lake will reach certain levels.

An additional critical need is to help water districts meet the State's requirement for a 20% reduction in water usage by 2020. Each of the participating water providers has its own unique status related to this requirement, but even the City of Santa Barbara, which has been a state-wide leader in pursuing water conservation, acknowledges a challenge in meeting the 20% by 2020 requirement.

This proposed program is an excellent example of true regional collaboration. First, because SBCWA is the grant applicant, basically applying on behalf of the seven local water providers. Secondly, some of those water providers could have decided to apply for a grant independently without regard for cooperation with SBCWA or with other water providers. Instead, they are collaborating because they understand the importance of taking a regional approach to water conservation and water management more broadly. Also, with this new rebate program, our regional approach to conservation is being significantly broadened by the participation of two water providers, Solvang and Buellton, which have not previously participated in any rebate program, nor in any landscape conservation program. Participation by Solvang and Buellton is especially significant because it informs and involves residents of the Santa Ynez Valley who were not previously eligible to participate in similar programs offered in other parts of the County. Increased water conservation in the Santa Ynez Valley and in south coast communities helps to ameliorate tensions surrounding Santa Ynez River water rights and usage. These are tensions which have been evident for over 80 years, with litigation in the late 1920's and early 1930's eventually resulting in a State Supreme Court decision (the Gin Chow Agreement) and subsequently in a series of Santa Ynez River Operations Agreements.

As the grant applicant, SBCWA is committing not only staff time to coordinate the program but also contract dollars to fund outreach efforts that will cover all of the participating water providers' service areas. SBCWA will work with the participating agencies to design and implement the outreach program.

Thus, this grant proposal marks a new era in expanded regional collaboration in Santa Barbara County. SBCWA is hopeful that other water purveyors in the County will learn from the example and experiences of purveyors participating in this program and will then be willing to enhance their own conservation efforts by joining in future collaborative efforts modeled on this new program.

Implementation and Results:

Project Planning:

Water conservation plans and drought contingency plans are in place for the majority of the project participants. Formally, the SBCWA developed a *Santa Barbara County Regional Water Shortage/ Drought Management Plan* in 2007. Also in 2007, the SBCWA produced a *Water Shortage Contingency/ Drought Planning Handbook* which assisted local water providers prepare their own drought planning materials.

In addition, four of the seven participating water providers (Carpinteria Valley Water District, Goleta Water District, and Cities of Santa Barbara and Lompoc) are required to develop Urban Water Management Plans (UWMP). The 2010 update of these plans includes a required Water Shortage Contingency Plan which assists them in planning and prioritizing cost effective conservation projects such as these. The same four participants are also subject to SBx7-7 and are actively promoting Demand Management Measures that will reduce potable water use and meet gpcd goals by 2020.

Additional Non-Federal Funding:

This project utilizes non-federal funding through use of local water district staff time, cash rebates, and cash used for program promotion and advertising. Only the cash rebates to customers will be matched by the USBR. Non federal funding was calculated using the following formula:

$$\text{Non-Federal Funding} / \text{Total Project Cost}$$

Local vs. Federal funding is estimated to be 72% vs. 28% based on Table 8.

Table 8. Project funding sources.

	Total \$	% of Total
Local Funding	\$396,310	69%
USBR grant	\$179,000	31%
Total Project	\$575,310	

Connection to Reclamation Project Activities:

The proposed project will directly reduce potable water demand from USBR operated Lake Cachuma as well as in local groundwater basins and State Water Project deliveries. Three of the seven participating water providers directly receive water from the Lake Cachuma project. Additionally, the four remaining providers are all located downstream of Lake Cachuma, one of which receives the majority of their water from a separate Cachuma project participant. These downstream providers

rely heavily on groundwater, which is under the influence of releases into the Santa Ynez River from Lake Cachuma. The proposed projects will not be on Reclamation property but will reduce water demand from and increase carryover storage for the USBR operated Lake Cachuma.

Readiness to Proceed:

Upon entering a financial assistance agreement sometime after May 2014, the project partners will begin the necessary steps to ensure the program can proceed at the start of the project implementation period in fall 2014. The following timeline will be considered and adjusted as needed:

Timeline: including major milestones and dates.

Develop Program Descriptive Materials for Customers: August 31, 2014
Develop District's Data Tracking Form/Spreadsheet: August 31, 2014
Develop Standard Invoice for Districts & County: August 31, 2014
Develop County Reporting Form: August 31, 2014
Develop Outreach materials: August 31, 2014

Convene Participating Districts to Coordinate Implementation: August, 2014
Advertise the Program: September 2014 – and ongoing

Begin site visits: October 2014
Approve rebates: October 2014- ongoing to Sept 2016

Water Providers report to SBCWA: Jan 2015 and quarterly
SBCWA reports to USBR: Feb 2015 and semi-annually.

The initiation of projects will depend on willingness of end use customers to apply but proper preparation by water providers, including developing program logistics and reporting tools, advertising, and other components will help ensure applicants can proceed through the process smoothly once begun. The majority of the participating water providers have been involved in landscape retrofit programs so we do not anticipate significant learning curves to slow completion of projects early in the grant window.

Due to the small footprint of these individual water conservation projects, no major construction permits are anticipated by project participants, reducing permitting delays typical of larger projects.

Performance Measures:

Project benefits will be thoroughly analyzed in partnership with participating water providers. We will assess pre and post project water use for each project to calculate water saved and to compare pre-project estimates vs. actual savings.

To accomplish this, the SBCWA will request from all participating water providers at the conclusion of the program, monthly water use history for all applicants to compare pre and post project water use. SBCWA staff will analyze monthly water use records, identifying each project implementation date and establishing a period prior to implementation that will create 12 months of baseline water use. 12 months of post project water use data will also be analyzed to compare against the initial baseline data. Comparing pre and post project 12 month periods with similar weather will be attempted as much as is practical.

For landscape retrofits that install water wise plants, we do expect the post project analysis to fall within the typical establishment period for new plants. The initial plant establishment period is one where water use is higher than the period several years out from initial planting. For this reason, our estimates of water saved will likely be conservative relative to the 15 year project savings. Plant water needs and associated irrigation will decline over time, after our post project analysis and reporting. These projects will likely result in additional water savings over the expected life of these projects, but will be incalculable within the grant reporting window.

ENVIRONMENTAL COMPLIANCE

- (1) The proposed projects will all take place in the built urban environment on residential and CII properties and will not cause disturbance to native habitats or other natural resources. Additionally, the scale of these small projects is not expected to exceed the level of earth disturbance that would require permitting within the Land Use Development Code (>2500 Sq Ft for CII or >5000 Sq Ft for residential properties).
- (2) The proposed projects will take place on existing residential and commercial properties within the built urban environment and are not expected to encounter or have project boundaries overlap with any critical habitat for listed or proposed federally threatened or endangered species. Therefore, we do not expect any negative impacts on federally listed or proposed threatened or endangered species.
- (3) No wetlands or other surface waters are expected to be encountered by the proposed projects.
- (4) The age of the water delivery systems for the seven participating water providers varies considerably. The common water delivery system for three of

the participating providers (Carpinteria VWD, City of Santa Barbara, and Goleta Water District) relates to the USBR operated Bradbury Dam and associated Lake Cachuma on the Santa Ynez River. Built in the early 1950's, this water supply and flood control reservoir has a 6.4 mile long tunnel that delivers water to the three mentioned water providers, as well as other communities on Santa Barbara's south coast. Once water flows through the tunnel, it continues along the South Coast Conduit, where it is distributed to the providers. This project will not alter or modify the existing water delivery system in any way.

The SBCWA has no water related facilities as it does not distribute or deliver water to customers.

- (5) These projects will upgrade many individual residential and commercial irrigation systems. The age of these systems vary considerably but according to water conservation field crews, are usually on the order of 20-30 years old and are either very inefficient or failing in some way (leaking valves, broken spray heads, inefficient equipment, etc.).
- (6) No buildings, structures, or listed National Register of Historic Places are expected to be participating in our projects.
- (7) Given that these projects will take place in a variety of residential and CII properties, we expect no known archeological sites will be affected.
- (8) We do not expect any disproportionately high and adverse effects on low income or minority populations. We hope that the landscape rebates will allow those who may not be able to otherwise afford it, to make important changes to their irrigation and landscaping. One of the participating water providers, the City of Lompoc, is a Disadvantaged Community (DAC).
- (9) These projects are not expected to limit access to and ceremonial use of Indian sacred sites or result in other impacts to tribal lands.
- (10) We do not expect this project to contribute in a significant way to the introduction, continued existence, or spread of noxious weeds or non-native invasive species known to occur in the area. Water conservation staff will review project plans and plant lists prior to approval of each project. We expect staff to review for some of the common invasive species present on lists such as WUCOLS and advise applicants to avoid these species.

REQUIRED PERMITS AND APPROVALS

No permits or approvals are required for implementation of the proposed program.

PROJECT BUDGET

Funding Plan

(1) The Water Wise Landscape Rebate Program will incur 3 kinds of costs: (1) staffing costs, (2) contractual expenses for outreach and related activities, and (3) rebates to customers. The staffing costs will be funded entirely by the participating agencies from their operating budgets. Likewise, the contractual costs and related expenses will be funded by the participating agencies, with the County funding a major part of outreach through media and other means. SBCWA already has the necessary funds in its current fiscal year budget, so SBCWA is ready to start funding the program as soon as USBR announces grant approval. The customer rebates would be funded 50/50 by both USBR and the participating water providers. These water providers' would fully fund the rebates and then invoice SBCWA which in turn would invoice USBR for 50% of the rebate costs. Each water provider's level of funding is shown in the table below.

To ensure an efficient flow of funds, the participating water providers will issue appropriate rebate payments directly to their customers; customers won't have to wait for SBCWA or USBR reimbursement. The water providers will then invoice SBCWA quarterly for reimbursement; and SBCWA will pay those invoices without waiting for USBR's reimbursement. SBCWA will invoice USBR quarterly or semi-annually as specified in the final grant agreement. This process has worked efficiently in previous grant-funded programs.

(2) SBCWA and participating water providers may incur some costs during this fiscal year between the date and grant application and the date of award of a USBR grant. If such costs are incurred, they would be counted toward the local match, and those costs would be above and beyond the estimated match shown in the table below (and in the Budget Form). Thus any pre-award local expenditure will increase the percentage of local match, thereby decreasing USBR's percentage of program funding. The local match is currently estimated to be 65% of total costs, while USBR's share would be only 35% of total costs, and probably lower.

(3) The identity and level of funding by all participating agencies is shown in the table below. Each of the local water providers has submitted a letter of commitment which is attached.

(4) No funding is requested and none received from any other Federal agency.

(5) All local agencies rely on annual or biennial funding approval, as does the U.S. Bureau of Reclamation. Some of the participating agencies already have sufficient funds in their current fiscal year operating budgets to implement the proposed program at this time; while other agencies will need to obtain their Board's or Council's approval of subsequent fiscal year operating budgets. However, as indicated in each letter of commitment, each of the participating agencies fully expects to be able to fund its share of the local match. Moreover is an agency should be unable to fund its portion of the program, SBCWA anticipates that one or more of the other participating agencies will be willing and able to incur additional costs and issue additional rebates than it is currently anticipating. There may also be other water providers in the County who ask to participate in the place of any agency that

is unable to meet its commitment.

Table 9: Summary of Federal and Non-Federal Funding Sources

FUNDING SOURCES	FUNDING AMOUNT
<i>Non-Federal Entities</i>	
1. SB County Water Agency	\$ 80,000.
2. Carpinteria Valley Water Dist.	\$ 16,100.
3. City of Buellton	\$ 12,460.
4. City of Lompoc	\$ 14,000.
5. City of Santa Barbara	\$ 129,250.
6. City of Solvang	\$ 30,000.
7. Goleta Water Dist.	\$ 92,500.
8. Vandenberg Village CSD	\$ 22,000.
<i>Non-Federal Subtotal:</i>	\$ 396,310.
Other Federal Entities:	
none	0
Requested Reclamation Funding:	\$ 179,000.
Total Project Funding:	\$ 575,310.

BUDGET PROPOSAL:

Summary Table of Funding Sources:

Funding Sources	% of Total Project Cost	Total Cost by Source
SB County Water Agency	14%	\$ 80,000.
Local Water Providers	55%	\$ 316,310.
Reclamation Funding	31%	\$ 179,000.
Other Federal funding	0%	
TOTALS	100%	\$ 575,310.

This grant proposal asks USBR to pay only for 50% of rebate costs. USBR would not subsidize any other costs. All other costs would be part of the local match, including: all staffing costs (salaries and indirect costs), contractual outreach costs, local travel, supplies used by agency staff, etc.). Since USBR is not being asked to subsidize any of those costs, the table below breaks down the local agencies' costs into 3 categories: staffing, cash for rebates, and outreach.

Table 10:

Agency	Yearly Staff Time Cost	Annual Agency cash for Rebates (\$'s)	Outreach, training, workshops, etc.	Annual local match	2-Year local match toward grant
SB Co. Water Agency	\$5,000	0	\$35,000	\$40,000	\$80,000
Carpinteria Valley WD	\$3,050	\$5,000		\$8,050	\$16,100
Buellton	\$1,230	\$5,000		\$6,230	\$12,460
Lompoc	\$1,500	\$5,500		\$7,000	\$14,000
City Santa Barbara	\$29,625	\$35,000		\$64,625	\$129,250
Solvang	\$6,000	\$9,000		\$15,000	\$30,000
Goleta WD	\$26,250	\$20,000		\$46,250	\$92,500
Vandenberg Village CSD	\$1,000	\$10,000		\$11,000	\$22,000
Totals	\$73,655	\$89,500	\$35,000	\$198,155	\$396,310

Table 11: Budget Proposal Table

		\$/unit	quantity	Total cost
Salaries & Wages	SBC Water Agency	\$40/hr	166.7 hrs	6667
	Local Water Providers	\$40/hr	2288.5 hrs	91540
Fringe Bens.	SBCWA	\$20/hr	166.7 hrs	3333
	Local Water Providers	\$20/hr	2288.5 hrs	45770
Total Staffing		\$60/hr	2,455.2 hrs	\$147,310.
Contracts	Media Ads	\$35/ad	2,000 ads	\$ 70,000.
Travel	n/a	n/a	0	0
Equipment	n/a	n/a	0	0
Supplies/Mtls	n/a	n/a	0	0
Indirect Costs	Not part of local match	n/a	n/a	0
Rebates to Customers**	SBC Water Agency	n/a	0	0
	Carpinteria Valley WD	\$728/rebate	27 rebates	\$20,000
	Buellton	\$728	27	\$20,000
	Lompoc	\$728	30	\$22,000
	City Santa Barbara	\$728	192	\$140,000
	Solvang	\$728	50	\$36,000
	Goleta WD	\$728	110	\$80,000
	Vandenberg Village CSD	\$728	55	\$40,000
Total Project Costs				\$575,310.

Budget Narrative:

Salaries and Wages: *Reclamation is not being asked to subsidize any salaries and wages. Salaries and wages will be counted toward the local match. Our estimates of number of hours are conservative, i.e., actual hours are likely to be higher and thus the local match (and local % share of project costs) is likely to be higher than the 72% estimate in this grant application.*

- The program manager will be Len Fleckenstein, Water Conservation Coordinator for the Santa Barbara County Water Agency.

- Each of the 7 participating water providers will have a staff person who handles that agency's role in the program.
- Each agency will record staff costs and report those costs to SBCWA quarterly. SBCWA, in turn, will include those costs in its reports to USBR.

Fringe Benefits: *Reclamation is not being asked to subsidize any salaries and wages. Since there are 8 different agencies cooperating in this program, with 8 different set of benefits, we have estimated an "average" or typical fringe benefit cost based on the city of Santa Barbara's staffing.*

Travel: *Reclamation is not being asked to subsidize any travel costs. Travel costs may be incurred as agency staff visit and evaluate customers' sites, but those costs won't be itemized; nor will they be figured into the local match.*

Equipment: *Reclamation is not being asked to subsidize any equipment costs. Any equipment costs that may be incurred by agency staff will not be itemized; nor will they be figured into the local match.*

Material and Supplies: *Reclamation is not being asked to subsidize any costs for materials and supplies. Any material and supply costs that may be incurred by agency staff will not be itemized; nor will they be figured into the local match.*

Contractual Costs: Contractor costs will primarily be incurred in the placement of advertisements, e.g., on television and radio. When SBCWA advertises a program on TV and radio, the Agency enters into a contract or purchase order with the media outlet. Our cost estimates in the budget proposal table are based on our experience with frequent media campaigns to promote water conservation. We estimate running audio and video spots 2,000 times (@ \$35/spot) to promote the program, for a total of \$70,000 during the 2-year grant period.

Environmental Compliance Costs: SBCWA doesn't anticipate any environmental compliance costs being incurred by USBR or any local participant in the landscape rebate program.

Reporting: SBCWA is well acquainted and experienced with USBR's grant reporting requirements. SBCWA will provide each participating agency with a specific Excel spreadsheet format for reporting its rebate data monthly or quarterly to SBCWA, which then will compile the data into a semi-annual report to USBR. Since data recording will be an on-going responsibility of the participating agencies, we are not separating out the reporting hours from the other program implementation hours.

Rebate Costs: Providing rebates to customers as incentives for improving landscape water efficiency is the goal of this grant funded program. Hence, the largest cost is for those rebates. The rebate amounts shown in the budget proposal table are the total amounts to be awarded to customers during the 2-year grant period. Fifty percent of those costs will be paid by the local water providers and fifty

percent will be subsidized by USBR, i.e., by reimbursing local agencies through SBCWA.

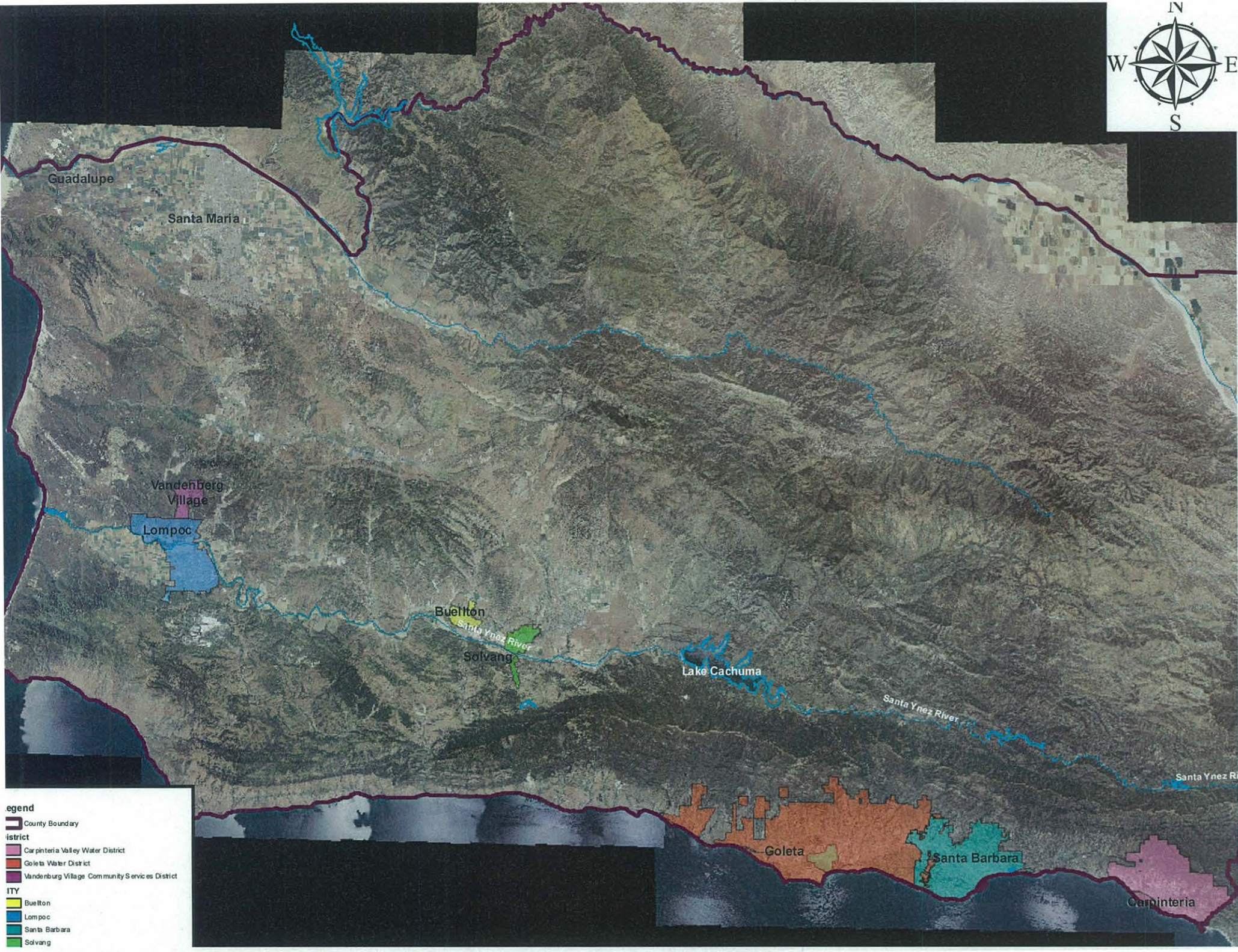
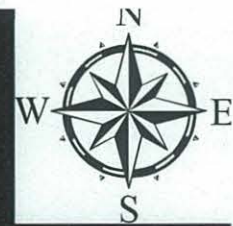
Letters of Commitment (attached)

- Carpinteria Valley WD
- City of Buellton
- City of Lompoc
- City of Santa Barbara
- City of Solvang
- Goleta Water District
- Vandenberg Village CSD

Official Resolution

- The Santa Barbara County Board of Supervisors unanimously approved a resolution authorizing the County Water Agency Manager to seek and apply for water related project and program grants from federal government agencies during fiscal year 2013/14. This resolution (or "minute order", No.13-00537) was approved on July 2, 2013, at the beginning of this current fiscal year. A copy of the resolution is attached.
- As indicated in our Budget Proposal, local funding will come from both the County Water Agency and participating local water providers. The County Water Agency already has sufficient funding in its current FY2013-14 budget to contribute its share of the local match. The other participating agencies have indicated their financial commitment to the program in their commitment letters which are attached.
- The SBCWA, as the applicant for this grant, will work with Reclamation to meet established deadlines for entering into a cooperative agreement. SBCWA has done so for grants in the past and fully expects to be able to do so in the future.

Budget Form SF424A: Signed form is attached.



Legend

- County Boundary
- Water District
 - Carpinteria Valley Water District
 - Goleta Water District
 - Vandenberg Village Community Services District
- CITY
 - Buellton
 - Lompoc
 - Santa Barbara
 - Solvang



City of Santa Barbara

Public Works Department

www.SantaBarbaraCA.gov

January 17, 2014

Main Office

630 Garden Street
P.O. Box 1990
Santa Barbara, CA
93102-1990

U.S. Department of the Interior
Bureau of Reclamation
Acquisition Operations Branch
Attn: Ms. Michelle Maher
P.O. Box 25007
Denver, CO 80225

Administration

Tel: 805.564.5377
Fax: 805.897.2613

SUBJECT: Support for WaterSMART Water and Energy Efficiency Grant, under funding opportunity #R14AS00001, for a Water Wise Landscape Rebate Program

Engineering

Tel: 805.564.5363
Fax: 805.564.5467

Dear Ms. Maher:

The City of Santa Barbara strongly supports the Santa Barbara County Water Agency's application for a WaterSMART Water and Energy Efficiency Grant, under funding opportunity #R14AS00001, for a Water Wise Landscape Rebate Program.

Facilities

Tel: 805.564.5415
Fax: 805.897.2577

As a water provider that will participate in this rebate program, we are committed to provide the following level of funding:

1. For each of the two years of the grant period, we commit \$70,000 for customer rebates and \$59,250 in staffing costs. 2. These funds will be available in each of the next two fiscal years, 7/1/14 - 6/30/15 and 7/1/15 - 6/30/16. 3. We do not anticipate any time constraints within those fiscal years. 4. We do not anticipate any other contingencies associated with our funding commitment. We are experienced with offering rebate programs to our customers, and we are confident of our ability to meet this funding commitment.

Street Maintenance

Tel: 805.564.5413
Fax: 805.897.1991

Transportation

Tel: 805.564.5385
Fax: 805.564.5467

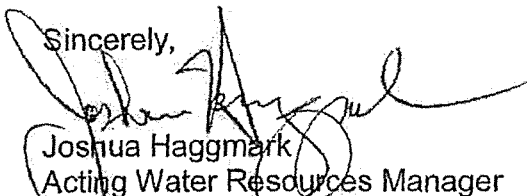
The proposed grant program will be fully consistent with USBR's stated objective for this FY2014 WaterSMART grant, i.e, to "increase water management flexibility, making our water supply more resilient and thereby helping to prepare for the impacts of climate change". Given recent and current climate and weather in Santa Barbara County, we are keenly aware of the need for water supply management and water efficiency. In fact, the U.S. Department of Agriculture (in a 1/15/14 letter from Sec. Vilsack to Governor Brown) included Santa Barbara among the California counties designated as "primary natural disaster areas due to recent drought."

Water Resources

Tel: 805.564.5387
Fax: 805.897.2613

Thank you for considering the County Water Agency's grant application. We appreciate Reclamation's efforts, through programs such as WaterSMART, to help us address the need for improved water efficiency within our jurisdiction.

Sincerely,



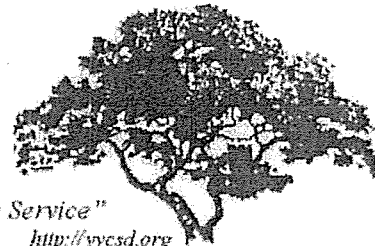
Joshua Haggmark
Acting Water Resources Manager

AJxx

VANDENBERG VILLAGE COMMUNITY SERVICES DISTRICT

3757 Constellation Road • Vandenberg Village • Lompoc, CA 93436
Telephone: (805) 733-2475 • Fax: (805) 733-2109

January 16, 2014



"Pride in Community Service"

<http://vvcasd.org>
info@vvcasd.org

Ms. Michelle Maher
U.S. Department of the Interior
Bureau of Reclamation
Acquisition Operations Branch
P.O. Box 25007
Denver, CO 80225

Dear Ms. Maher:

Vandenberg Village Community Services District (VVCSD) strongly supports the Santa Barbara County Water Agency's application for a WaterSMART Water and Energy Efficiency Grant, under funding opportunity #R14AS00001, for a *Water Wise Landscape Rebate Program*.

As a water provider that will participate in this rebate program, we are committed to provide the following level of funding:

1. For each of the two years of the grant period, we commit \$10,000.00 for customer rebates and \$1,000.00 in staffing costs.
2. These funds will be available in each of the next two fiscal years (7/1/14-6/30/15 and 7/1/15-6/30/16).
3. We do not anticipate any time constraints within those fiscal years. In fact, we will be able to begin devoting staff to this program prior to the start of the next fiscal year.
4. We do not anticipate any other contingencies associated with our funding commitment. We are experienced with offering rebate programs to our customers, and we are confident of our ability to meet this funding commitment.

The proposed grant program will be fully consistent with USBR's stated objective for this FY2014 WaterSMART grant, i.e., to "increase water management flexibility, making our water supply more resilient and thereby helping to prepare for the impacts of climate change". Given recent and current climate and weather in Santa Barbara County, we are keenly aware of the need for water supply management and water efficiency. In fact, the U.S. Department of Agriculture (in a 1/15/14 letter from Sec. Vilsack to Governor Brown) included Santa Barbara among the California counties designated as "primary natural disaster areas due to recent drought."

Thank you for considering the County Water Agency's grant application. We appreciate Reclamation's efforts, through programs such as WaterSMART, to help us address the need for improved water efficiency within our jurisdiction.

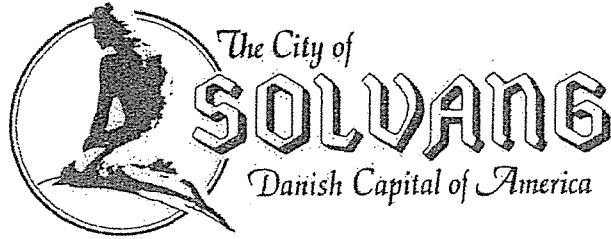
Sincerely,

Vandenberg Village Community Services District

A handwritten signature in black ink, appearing to read "Joe Barget".

Joe Barget
General Manager

kkm



January 17, 2014

U.S. Department of the Interior
Bureau of Reclamation
Acquisition Operations Branch
Attn: Ms. Michelle Maher
P.O. Box 25007
Denver, CO 80225

Subject: Confirmation of Commitment – Santa Barbara County Water Agency Landscape Rebate Program

Dear Ms. Maher:

The City of Solvang enthusiastically supports the Santa Barbara County Water Agency's application for a WaterSMART Water and Energy Efficiency Grant, under funding opportunity #R14AS00001, for a *Water Wise Landscape Rebate Program*.

As a water provider that will participate in this rebate program, we are committed to provide the following level of funding:

1. For each of the two years of the grant period, we commit \$9,000 for customer rebates and \$6,000 in staffing costs.
2. These funds will be available in each of the next two fiscal years (7/1/14 - 6/30/15 and 7/1/15 - 6/30/16).
3. We do not anticipate any time constraints on the availability of funds within those fiscal years. If the application is approved, we plan to begin devoting staff to this program prior to the start of the next fiscal year.
4. We do not anticipate any other contingencies associated with our funding commitment.

The proposed grant program will be fully consistent with USBR's stated objective for this FY2014 WaterSMART grant, i.e, to "increase water management flexibility, making our water supply more resilient and thereby helping to prepare for the impacts of climate change". Given recent and current climate and weather in Santa Barbara County, we are keenly aware of the need for water supply management and water efficiency. In fact, the U.S. Department of Agriculture (in a 1/15/2014 letter from Sec. Vilsack to Governor Brown) included Santa Barbara among the California counties designated as "primary natural disaster areas due to recent drought."



Carpinteria Valley Water District

1301 Santa Ynez Avenue • Carpinteria, CA 93013
Phone (805) 684-2816

BOARD OF DIRECTORS

Matthew Roberts
President

Alonzo Orozco
Vice President

Richard Forde

Polly Holcombe

June Van Wingerden

GENERAL MANAGER

Charles B. Hamilton

January 22, 2014

U.S Department of the Interior
Bureau of Reclamation
Acquisition Operations Branch
Attn: Ms. Michelle Maher
P.O. Box 25007
Denver, CO 80225

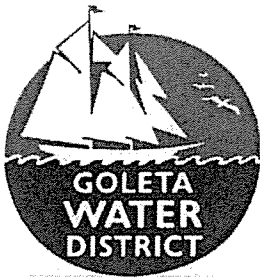
Dear Ms. Maher:

The Carpinteria Valley Water District (CWD) strongly supports the Santa Barbara County Water Agency's application for a WaterSMART Water and Energy Efficiency Grant, under funding opportunity #R14AS00001, for a *Water Wise Landscape Rebate Program*.

As a water provider that will participate in this rebate program, we are committed to provide the following level of funding:

1. For each of the two years of the grant period, we commit \$5,000 for customer rebates and \$3050 in staffing costs.
2. These funds will be available in each of the next two fiscal years (7/1/14-6/30/15 and 7/1/15-6/30/16).
3. We do not anticipate any time constraints within those fiscal years. In fact, we will be able to begin devoting staff to this program prior to the start of the next fiscal year.
4. We are experienced with offering rebate programs to our customers, and we are confident of our ability to meet this funding commitment.

The proposed grant program will be fully consistent with USBR's stated objective for this FY2014 WaterSMART grant, i.e. to "increase water management flexibility, making our water supply more resilient and thereby helping to prepare for the impacts of climate change". Given recent and current climate and weather in Santa Barbara County, we are keenly aware of the need for water supply management and water efficiency. In fact, the U.S Department of Agriculture (in a 1/15/14 letter from Sec. Vilsack to Governor Brown) included Santa Barbara among the California counties designated as "primary natural disaster areas due to recent drought."



4699 HOLLISTER AVENUE
GOLETA, CALIFORNIA 93110-1999
TELEPHONE 805/964-6761
FAX 805/964-7002

January 22, 2014

Bureau of Reclamation, Acquisition Operations Branch
Attn: Ms. Michelle Maher
Mail Code: 84-27810
P.O. Box 25007
Denver, CO 80225

Subject: Letter of Support for Santa Barbara County Water Agency *Water Wise Landscape Rebate Program*

Dear Ms. Maher:

The Goleta Water District strongly supports the Santa Barbara County Water Agency's application for a WaterSMART Water and Energy Efficiency Grant, under funding opportunity #R14AS00001, for a *Water Wise Landscape Rebate Program*.

Through this program, the participating agencies, including Goleta Water District, can achieve the economies of scale enjoyed by larger organizations by banding together under one umbrella to provide an improved WaterWise Landscape Rebate Program.

The proposed grant program will be fully consistent with USBR's stated objective for this FY2014 WaterSMART grant, i.e. to "increase water management flexibility, making our water supply more resilient and thereby helping to prepare for the impacts of climate change". Given recent and current climate and weather in Santa Barbara County, we are aware of the need for water supply management and water efficiency.

Thank you for considering the County Water Agency's grant application. We appreciate Reclamation's efforts, through programs such as WaterSMART, to help us address the need for improved water efficiency within our jurisdiction.

Sincerely,

Kirsten G. McLaughlin
Water Supply and Conservation Manager

Cc: Len Fleckenstein, Santa Barbara County Water Agency (via email to lflecken@cosbpw.net)



County of Santa Barbara
BOARD OF SUPERVISORS

Minute Order

July 02, 2013

Present: 5 - Supervisor Carbajal, Supervisor Wolf, Supervisor Farr, Supervisor Adam,
and Supervisor Lavagnino

PUBLIC WORKS, BOARD OF DIRECTORS, WATER
AGENCY, BOARD OF DIRECTORS, FLOOD CONTROL
AND WATER CONSERVATION DISTRICT

File Reference No. 13-00537

RE: Consider recommendations regarding approval for Grant Applications for Water Resources Projects, as follows:

Acting as the Board of Supervisors:

a) Authorize the Project Clean Water Manager or designee to seek and apply for water quality project and program Grants from federal or state government agencies or other funding entities during Fiscal Year 2013/2014; and

b) Find that the proposed action is related to creation of a government funding mechanism and other fiscal activities which do not involve any commitment to any specific project which may result in a potentially significant physical impact on the environment, and is therefore exempt from CEQA pursuant to Guideline Section 15378 (b)(4);

Acting as the Board of Directors, Water Agency:

c) Authorize the Water Agency Manager or designee to seek and apply for water related project and program grants from federal or state government agencies or other funding entities during Fiscal Year 2013/2014; and

d) Find that the proposed action is related to creation of a government funding mechanism and other fiscal activities which do not involve any commitment to any specific project which may result in a potentially significant physical impact on the environment, and is therefore exempt from CEQA pursuant to Guideline Section 15378 (b)(4); and

Acting as the Board of Directors, Flood Control and Water Conservation District:

e) Authorize the Engineering Manager or designee to seek and apply for flood control project and program grants from federal or state government agencies or other funding entities during Fiscal Year 2013/2014; and

f) Find that the proposed action is related to creation of a government funding mechanism and other fiscal activities which do not involve any commitment to any specific project which may result in a potentially significant physical impact on the environment, and is therefore exempt from CEQA pursuant to Guideline Section 15378 (b)(4).

A motion was made by Supervisor Farr, seconded by Supervisor Adam, that this matter be Acted on as follows:

a) Authorized;

b) Approved;

c) Authorized;

d) Approved;

e) Authorized; and

f) Approved.

The motion carried by the following vote.

Ayes: 5 - Supervisor Carbajal, Supervisor Wolf, Supervisor Farr, Supervisor Adam,
and Supervisor Lavagnino