

Table of Contents

Executive Summary.....	1
Project Location	2
Project Description	3
Outreach and Partnership Building	4
Analyses, Scoping and Planning Activities	4
Development of a Water Strategy Document	5
Strategic Document Goals	6
Technical Proposal: Evaluation Criteria	11
Evaluation Criterion A. Project Benefits	11
Evaluation Criterion B. Inclusion of Stakeholders, Stakeholder Support, and Previous Planning Efforts.....	13
Sub-Criterion B1: Task A – Water Strategy Grants	13
Evaluation Criterion C. Ability to Meet Program Requirements	15
Evaluation Criterion D. Presidential and Department of the Interior Priorities.....	16
Sub-Criterion No. D1. Climate Change.....	16
Sub-Criterion No. D2. Disadvantaged or Underserved Communities	16

Tables

Table 1.	Proposed Planning Schedule
Table 2.	Proposed Budget

List of Figures

Figure 1.	Location Map
Figure 2.	Justice 40 Tract Map

Appendices

Mandatory Federal Forms

- SF-424 – Application for Federal Assistance
- SF-424A – Budget Information – Non-Construction Programs
- SF-424B – Assurance – Non-Construction Programs

Environmental and Cultural Compliance

Required Permits and Approvals

Supplemental Statements and Disclosures

Collaborative Agreement and Letter of Partnership

Letters of Support

Executive Summary

May 21, 2024

Fountain Creek Watershed, Inc. dba Pikes Peak Waterways (PPW), a Category B Applicant, in conjunction with the City of Colorado Springs, a Category A Applicant Colorado Springs, El Paso County, Colorado

PPW in collaboration with the City of Colorado Springs is applying for the Bureau of Reclamation FY 2024 Task A WaterSMART Water Strategy Planning Grant (Funding Opportunity Number R23AS00109) in the amount of \$400,000 to develop a new study and planning document focused on the restoration of the natural functions of Monument Creek. This WaterSMART Grant proposal is for the development of a Water Strategy Planning Document for the assessment of ecological restoration needs and opportunities for the Monument Creek corridor in Colorado Springs, El Paso County, Colorado. This proposal is being submitted under the Task A: Water Strategy Grant area on behalf of the Pikes Peak Waterways nonprofit organization (PPW), a Category B Applicant. The City of Colorado Springs, a Category A Applicant, has a collaborative agreement with PPW and is providing a Letter of Partnership in support of this proposal.

Our proposed study is intended to develop mitigative strategies and projects to increase aquatic and riparian habitat, enhance wetland habitat, and improve water quality concerns addressing excess sediment loading, turbidity, and elevated water temperatures. The net result of the assessment efforts, if funded under this proposal, will be the submittal of a Water Strategy Planning Document that identifies restoration projects and activities along with a prioritized implementation strategy to provide ecological resilience for Monument Creek.

The restoration vision for Monument Creek is founded on multiple, recent planning efforts in the community including the 2016 Monument Creek Watershed Plan and 2023 COS Creek Plan Fountain Creek Watershed Vision that coincide with this application. The COS Creek Plan laid out a conceptual vision and strategy to restore environmental qualities, promote economic vitality, and enhance recreational opportunities in line with the legacy of the parkway system developed by Colorado Springs founder, General William Jackson Palmer. PPW spearheaded the visionary process that created the COS Creek Plan. PPW's Water Strategy Grant proposal for Monument Creek will build on established overarching goals from these previous studies in developing a comprehensive strategy for the ecological restoration of the Monument Creek corridor. We are proposing an eighteen-month schedule for this planning effort.

Project Location

The project area is located along Monument Creek within the City of Colorado Springs, El Paso County, Colorado at Latitude 38°50'N and Longitude 104°50'W. The project runs north along Monument Creek approximately 5 miles from the Bijou Road bridge north to the Garden of the Gods Road bridge (**Figure 1**).

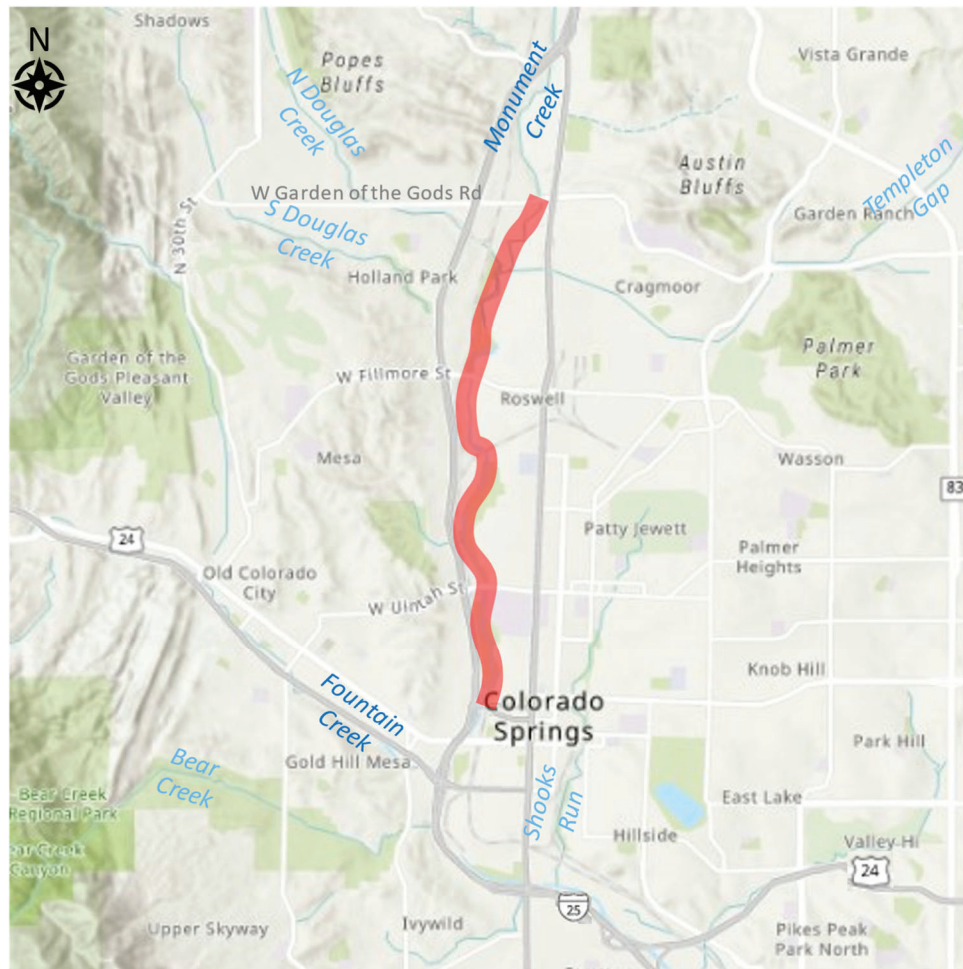


Figure 1. Project Location

The Monument Creek basin drains approximately 250 square miles upstream of the confluence with Fountain Creek. Monument Creek is a major tributary to Fountain Creek, which is in turn a major tributary of the Arkansas River watershed in south-central Colorado. The City of Colorado Springs has developed adjacent to Monument Creek, ultimately reaching its current state as a confined urban stream in the lower reaches including the entire project area. Areas upstream of the City of Colorado Springs include the Towns of Monument, Palmer Lake and Woodmoor, and the US Air Force Academy. Monument Creek experiences extreme flow rate changes and velocities ranging from a base flow of 30 cfs to flood flows exceeding 32,000 cfs.

Project Description

The purpose of this WaterSMART Task A Water Strategy Grant proposal is for the development of a Water Strategy Document for the assessment of ecological restoration needs and opportunities for Monument Creek in Colorado Springs, Colorado. Colorado Springs was founded along the banks of Monument Creek in 1886. The City has grown out from the original settlement to a population of approximately 478,000 within City limits and approximately 755,000 within the metropolitan statistical area. This makes Colorado Springs the second largest city within the Front Range Urban Corridor, which is a rapidly growing population center along the eastern foothills of the Rocky Mountains. Approximately 16% of The City is also home to major military installations and approximately 45,000 active-duty troops, many of whom will take their memories of their posting to in other locations nationwide.

Monument Creek flows through the heart of Colorado Springs. Perennial water source such as Monument Creek are of critical importance in the American West, providing water in an otherwise arid region and attracting people and wildlife to its banks. The Monument Creek watershed covers a diverse geographic area consisting of mountains, foothills, plains, and urbanized areas. It covers portions of El Paso County and is a tributary to the Arkansas River, one of the major river systems in Colorado. The watershed extends from 10,000-foot mountainous areas near the Continental Divide to the 6,000-foot elevation of Colorado Springs. The contributing watershed is extremely steep, with one of the highest gradient changes for such a short stretch of river.

The Colorado Springs community is in dire need of a comprehensive strategy for restoration of the Monument Creek corridor within the city to include aquatic and riparian improvements, reduced sediment transport, improved water quality in regard to recent TMDL studies for excess E. coli and selenium, enhanced wetland habitat, and increased stream capacity. The Monument Creek corridor through Colorado Springs has deteriorated considerably over the last 100 years. Urbanization has resulted in confinement and channelization of the creek corridor, reducing and/or eliminating floodplain benching and natural wetlands, and creating incised stretches of channel for many reaches in the study area. In some reaches, creek banks have become so unstable that they have resulted in excessive and extreme sediment loading to downstream Fountain Creek and areas extending into the Lower Arkansas Valley.

Colorado Springs was founded in 1871 by General William Jackson Palmer. General Palmer was an advocate of open spaces, greenways, and parklands for enhancing the quality of life in a community. He ultimately played a key role in the development of Colorado Springs' parkway system. General Palmer's legacy is reflected in the current restoration vision for Monument Creek with its potential for enhancing the natural character of the drainageway and revitalizing adjacent, historically disadvantaged neighborhoods along the corridor. Restoration of the Monument Creek corridor will provide distinct benefits for the adjacent neighborhoods and

development occurring along the waterway. Our water strategy grant includes the following required project components for inclusion into our proposed Water Strategy Document.

Outreach and Partnership Building

PPW works closely with local, state, and federal organizations. They've developed an extensive and diverse group of stakeholders for the 2023 COS Creek Plan and entered into a unique collaborative agreement with the City of Colorado Springs and the Colorado Springs Utilities to facilitate implementation of that visionary plan. PPW will build on this successful outreach and partnership building program to develop partnerships and engage stakeholders for the upstream Monument Creek Water Strategy.

Implementation of the Monument Creek vision will require a coordinated effort and collaboration among a diverse group of stakeholders, government agencies, nonprofit organizations, private landowners, and the broader Colorado Springs community. PPW has been actively engaged with other public and private organizations to facilitate the formation of partnerships to benefit the Fountain Creek and Monument Creek watersheds. Towards that end and as a part of this grant initiative, targeted workshops and broader public meetings will be held throughout the course of the planning efforts to garner input and feedback on the development of ecological restoration strategies for the Monument Creek corridor. Input from stakeholders and the community will help shape the vision and identify priority projects and activities discussed in the Water Strategy Document. Moreover, partnerships and collaborative efforts will help leverage resources to implement the goals and objectives in the Water Strategy Document more effectively.

Analyses, Scoping and Planning Activities

Our Water Strategy Planning Grant proposal is for development of better watershed management and restoration efforts to improve water quality and habitat conditions. A survey and thorough review of prior hydrologic and hydraulic engineering studies in the watershed including the hydraulic and geomorphic modeling in support of the 2016 Monument Creek Watershed Plan will be performed. Evaluation of and updates to prior hydraulic models will be included to enhance guidance for recommendations in the Water Strategy Document. These efforts will help identify ecological problems which exist in the study reach along with recommendations for improvement of the aquatic ecosystem.

Fountain Creek and upstream Monument Creek are home to the largest populations of Flathead Chub and Arkansas Darter in Colorado. The Flathead Chub is a species of greatest conservation need in Colorado and has been designated as a Species of Special Concern by the state. While common across North America, this plains stream fish is struggling to continue to exist in Colorado. The population of the fish is significantly diminished during minor floods because they are simply washed away. There are too few safety refuges for the flathead chub during floods because of the urbanization of the channel. Populations take several years to recover. The Flathead Chub has been documented travelling upstream of Fountain Creek to its historic

spawning habitat in Monument Creek. Spawning habitat within Monument Creek has been critically degraded over the years with deterioration of the creek. Our proposed Water Strategy Document will evaluate installation of fish passage in conjunction with restoration efforts within the corridor. Additionally, the Arkansas Darter is Federally classified as a Near Threatened species in Colorado. Pressure from ongoing drought conditions as well as deterioration of water quality in the corridor has had an impact on the vitality of this species within Monument Creek.

A detailed assessment of the creek will be conducted with recommendations for channel stabilization and better control of channel velocities for both base and flood flow conditions to enhance aquatic life and threatened fish species. Managing flow conditions can be an integral part of restoring the natural functions of the creek. These efforts will have a distinct benefit for the downstream Fountain Creek corridor, communities downstream of Colorado Springs, and agricultural water supply for areas directly south of the Springs and into the Lower Arkansas Valley. Improvements recommended in the Water Strategy Document will improve the overall water quality for downstream municipal and agricultural water sources by decreasing sediment loading and turbidity, controlling flood volume, and improved water quality through additional natural wetland and riparian vegetation.

A decision matrix will be developed with stakeholder and community input to prioritize and rank recommended restoration projects and activities. Benefit-Cost analyses will be developed to compare recommended restoration projects for development of an implementation strategy. Less than 30% of the awarded grant budget will be directed to supporting field work required for the hydrologic and hydraulic modeling, geomorphic evaluations, and general assessment of the overall ecological condition of the creek.

Development of a Water Strategy Document

PPW in coordination with Colorado Springs and CSU were instrumental in the development of the 2023 COS Creek Plan and is actively involved in facilitating the implementation of recommended projects and activities. The COS Creek Plan serves as the basis for the development of a more detailed Water Strategy Document for Monument Creek. The Strategy Document will include a summary of the required outreach efforts for Project Component 1 including community engagement, collaboration with stakeholders and technical groups, outreach to landowners residing next to the creek corridor, development of educational programs and brochures specific to the restoration of Monument Creek, and partnership building. A summary of the analyses and assessments conducted under Project Component 2 to identify restoration and ecosystem issues in the corridor including a discussion of modeling efforts, geomorphic evaluation, opportunities to improve and/or enhance aquatic and riparian habitat, enhance wetland habitat, and improve water quality will be included. Currently, there are pending studies for TMDLs for both E-coli and selenium in Monument Creek.

The Water Strategy Document will include a discussion of next steps to address local, state, and federal permitting requirements, environmental compliance, legal issues, and future land use

policy for development within the corridor. Also included will be discussions regarding financing, coordination with the Colorado Division of Water Resources to avoid any infringement on downstream water rights due to the development of overbank features such as bankfull floodplain benches and riparian buffer areas, and coordination with Colorado Springs and the Colorado Springs Utilities on any infrastructure issues/design recommendations for the creek corridor. Finally, a discussion of lessons learned in the development of our Monument Creek restoration strategy will be included in the final water strategy document.

Our Water Strategy Grant proposal fully addresses and meets the required Project Component 2 Analysis, Scoping, and Planning Activities including sub-components a through c. We are proposing a thorough analysis of restoration issues and aquatic habitat needs for the Monument Creek corridor including additional modeling and geomorphic and environmental assessments. Our proposed Component 2 efforts will result in identification of restoration opportunities, projects, and activities to restore the natural functions of the creek. These proposed projects and activities will be vetted through a decision matrix developed with input from stakeholders, project partners, and the Colorado Springs community. Proposed projects and activities will be prioritized and ranked for implementation. This Grant Proposal will lead to the development of a Water Strategy to provide ecological resilience for the Monument Creek corridor and improved water quality for downstream municipal and agricultural water sources for the Lower Arkansas Valley.

This Grant proposal has a nexus to the Bureau of Reclamation from the improved water quality for downstream municipal and agricultural water sources resulting from the environmental restoration of Monument Creek. Improved water quality will have a positive impact upon the Fountain Valley Authority and the USBR Frying Pan-Arkansas Project. Additional assessment and recommendations for channel stabilization to better control channel velocities for both base and flood flow conditions will also serve to improve downstream water quality conditions.

Strategic Document Goals

Restore Ecological Qualities of Monument Creek. Restoring the habitat for the Flathead Chub and Arkansas Darter with recommendations for improvements of water quality and for installation of fish ladders to reintroduce spawning habitat within Monument Creek. Monument Creek has historically been a critical tributary habitat for both the Flathead Chub and the Arkansas Darter. Sixteen percent of Colorado's population reside in the Fountain Creek and Monument Creek watersheds. Our planning project aims to provide a strategy with implementable project recommendations for restoration of Monument Creek to once again be a tributary habitat for these threatened fish species. Our planning efforts will include evaluation of existing fish impedances and structures with recommended strategies for modification and/or removal to encourage seasonal upstream migration of the Chub and Darter. Our planning strategies will include evaluation of passive measures such as introduction of shading along the

channel banks and additional channel pools to help decrease water temperatures through the study reach.

Improve the water quality through the study reach. Evaluate strategies for the reduction of E. coli contamination and reduced concentrations of selenium. Stormwater runoff from urban areas can carry pollutants, including E. coli bacteria, from impervious surfaces such as roads, parking lots, and rooftops into Monument Creek. To the extent that urban runoff can be filtered either through wetlands or riparian floodplain benching, concentration of E. coli bacteria can potentially be reduced. Our strategic planning will evaluate areas where E. coli concentrations have been measured as being high. Selenium is naturally present in certain geologic formations, including sedimentary rocks, shale, and seleniferous soils. Selenium can be mobilized into surface water and groundwater through natural processes such as weathering, leaching, and erosion. Our planning efforts will identify those areas within the creek channel where exposed bed rock in the channel bed may be contributing to elevated concentrations of selenium.

Restore the Natural Riverine Functions of Monument Creek. The creek has been significantly altered from its historic condition over the last 100 years due to development of neighborhoods adjacent to the creek corridor within the city. Our proposed planning effort will identify areas of the corridor where sinuosity can be reintroduced to the creek along with a revegetated low flow channel and vegetated riparian floodplain benching. Unstable channel banks and bed slopes will be identified along with project recommendations for restoration. Our aim is to provide guidance for restoration of the natural processes and ecological functions of the creek ecosystem. The planning efforts will evaluate habitat restoration, water quality improvement, and floodplain management strategies. This approach will have a substantial impact upon the overall health of the aquatic ecosystem. Additionally, areas where existing wetlands can be enhanced and/or expanded and where new wetlands can be constructed will be evaluated and catalogued. Recommendations will be made for reduction and/or elimination of invasive vegetative species that have invaded the corridor in recent years. Salt cedar and Russian olive infestations have had a significant impact on riparian habitat, potential streambank erosion, water consumption, and potential wildfire hazards.

Salt cedar and Russian olive can exacerbate streambank erosion over time and are invasive species. Their extensive root systems can destabilize streambanks and increase the risk of channel widening, sedimentation, and habitat degradation. As an invasive species, they can outcompete and crowd out native species. This can negatively impact aquatic and riparian habitats and influence water quality downstream. These plant species are also highly flammable and can increase the risk of wildfires. Their dense foliage and accumulations of dry biomass can fuel fire spread and intensify fire behavior, posing a threat to adjacent neighborhoods, infrastructure, and natural resources. Colorado Springs faces an annual wildfire risk due to its semi-arid climate and proximity to wildland areas. The Springs community experiences hot, dry summers and relatively low humidity. These conditions are favorable for ignition and spread of

wildfires, particularly during drought conditions. Colorado Springs has experienced periodic drought conditions in recent years due to below-average precipitation and higher temperatures.

Developing a strategy for the restoration of aquatic and riparian habitats is critical for supporting healthy populations of fish, wildlife, and native vegetation in the study corridor. Recommendations for the creation of riffles, pools, and a more natural channel morphology will help stabilize the creek banks and channel bed and better control erosion and excess sediment transport. Narrowing and deepening the creek channel in specific reaches will provide additional opportunity for the introduction of shading and lowering of stream temperature. Recommendations for managing streamflow patterns will be important for maintaining aquatic species and improving downstream conditions for Fountain Creek and areas into the Lower Arkansas Valley. Restoring and maintaining floodplain connectivity through the corridor is a goal of our strategic planning efforts and will provide ecological resilience and reduced flood risk for both the creek ecosystem and adjacent neighborhoods.

Opportunities to Re-establish the Floodplain within a Highly Urbanized Corridor. Re-establishment of floodplains within the study corridor will provide multiple benefits. A goal of our strategic planning is to evaluate the opportunities for widening existing floodplains and reintroducing riparian areas within the corridor. Floodplains act as natural filters, trapping sediments, pollutants, and excess nutrients from stormwater runoff before they can reach the creek. The results of this process will improve water quality by reducing the number of pollutants entering the creek and being conveyed downstream. This will enhance habitat conditions for aquatic organisms and support recreational activities such as hiking and fishing. Accessible green spaces along urban rivers and streams will provide our residents with an improved quality of life and encourage renewal of adjacent neighborhoods and creek-focused development within the community's Justice 40 mapped tracts.

Re-establishment of floodplains within the study corridor will also provide climate resilience by providing natural buffers against the impacts of climate change, such as increased frequency and intensity of storms and extreme weather events. Flow rates in Monument Creek vary widely throughout the year ranging from a minimum of 8 cfs to over 4,000 cfs over the last twelve months per USGS data. In times of heavy rainfall or intense storms, flow rates in Monument Creek can rise rapidly, leading to increased runoff and the potential for flash flooding, particularly through our urbanized study corridor with limited natural drainage capacity. Well-managed floodplains can help absorb excess water, reduce flood risk, and adapt to changing environmental conditions.

Improved Creek Flow Capacity. Another aim of our strategic planning is to provide recommendations to improve creek flow capacity through the study corridor. Improved flow capacity will help control erosion and sedimentation. Improved flow capacity can help control erosion by maintaining stable channel dimensions, reducing sediment deposition, and promoting natural sediment transport through the study corridor. The channel bed of Monument Creek is characterized by a sandy substrate. Sandy substrates can influence stream channel morphology

and dynamics, leading to changes in streambed elevation, width, and pattern. Channel incision, widening, and meandering may occur in response to erosional processes, altering the natural flow regime and habitat conditions within the stream. Channel incision is evident through portions of our study corridor. Sandy substrates are prone to erosion and excessive sediment transport particularly during high flow events. The potential for flash flooding and rapid increases in flow rates in conjunction with the sandy substrate and overall deterioration of the creek within the study corridor has degraded the ecological functions of the creek and impaired the once thriving aquatic habitat.

Increased flow capacity in the creek will benefit valuable aquatic and riparian habitats, infrastructure, and adjacent neighborhood properties along the creek corridor. Enhanced creek flow capacity can promote natural sediment transport processes and improve water quality by reducing pollutant concentrations and diluting the transport of contaminants in urban runoff. Increased flow capacity and flushing action can help disperse pollutants, such as sediment, nutrients, heavy metals, and pathogens, and promote their removal through natural attenuation. This leads to cleaner and healthier waterways for aquatic life and recreational use. Increased flow capacity in conjunction with reestablishment of floodplains through the study corridor will strengthen the creek's ability to convey an ever-wider range of flow rates brought on by climate change, drought conditions, and wildfires in the upper portions of the watershed. Statistically, the highest peak flows occurring through the study reach are coincidental with drought conditions. Rainfall runoff generally increases during drought conditions due to the creation of hardpan brought on by the drying and shrinkage of soil as soil moisture is depleted. The compaction and consolidation of soil particles can lead to the development of surface crusting on the soil surface. Over time, this process can lead to the formation of a hard, impermeable crust or hardpan layer on the soil surface, restricting water infiltration and exacerbating both soil moisture depletion and rainfall runoff leading to much higher peak discharges.

The wildfires that have been endemic in the upper watershed in recent years have also contributed to higher peak discharges through the study area. As forest land is burned, the loss of vegetative ground cover contributes to higher peak runoff along with excess sediment. The intense heat of wildfires can lead to formation of hydrophobic or water-repellent soils, where the soil surface becomes coated with waxy residues from burned organic matter. Hydrophobic soils are less permeable to water and may cause rainfall to pond or runoff more quickly over the soil surface, increasing surface runoff and erosion rates. With reduced vegetative cover and altered soil properties, wildfires can lead to increased surface runoff and higher peak flows in streams and rivers causing flash flooding, excessive sediment transport, and debris flows in burned watersheds. Increased flow capacity for Monument Creek by improving channel morphology and reestablishing floodplains through the study corridor will make the community more resilient to both climate change and the occurrence of wildfires in the upper watershed.

Capitalize on Corridor Enhancements. A strategy for restoration of the creek will result in improved aquatic and riparian habitat, improved ecological function, expanded wetlands and

floodplain benching through the corridor, and improved sediment transport and water quality. Monument Creek plays a significant role in the local landscape and can be integrated into broader future park planning and management strategies to promote environmental stewardship and public enjoyment of the community's natural resources. While not a driving goal for our Water Strategy, restoration of the creek will contribute significantly to environmental justice for economically disadvantaged neighborhoods that are adjacent to the creek corridor.

Our planning strategy will look for opportunities to reestablish the floodplain within a highly urbanized corridor. This will have a positive impact upon economically disadvantaged neighborhoods from Filmore to Garden of the Gods Road including areas currently mapped in the Justice 40 tracts map. Restoration of Monument Creek will encourage private investment and renewal of adjacent neighborhoods with redevelopment oriented and focused on the creek. Evaluation of ecological opportunities adjacent to the creek corridor can improve neighborhood connections in line with General Palmer's historic parkways vision for the community. Ecological restoration of Monument Creek can return the creek corridor to its historic prominence and a focal point for the community.

Similarly, while not a driving goal for our planning strategy, ecological restoration of the creek corridor will expand recreational opportunities such as environmental creekside playgrounds, pedestrian connectivity to both adjacent neighborhoods and pathways along the corridor to allow community access. The opportunity to capitalize on creek enhancements will provide multiple benefits for the community and more cost-effective project proposals for the ecological restoration of Monument Creek. As discussed in the Project Description section, our project planning goals will be accomplished through the completion of the following Project Components that will be a part of our Water Strategy Planning efforts.

Outreach and Partnership Building. Implementation of the Monument Creek vision will require a coordinated effort and collaboration among a diverse group of stakeholders, government agencies, nonprofit organizations, private landowners, and the broader Colorado Springs community. Towards that end and as a part of this grant initiative, targeted workshops will be held throughout the course of the planning efforts to gather input and feedback on the development of ecological restoration strategies for the Monument Creek corridor. Input from stakeholders and technical partners will help shape the vision and identify priority projects and activities discussed in the Water Strategy Document.

Analyses, Scoping, and Planning A detailed assessment of the creek will be conducted with recommendations for ecological restoration measures to address the project planning goals listed above. A decision matrix will be developed with stakeholder and technical partner input to prioritize and rank recommended restoration projects and activities. Benefit-Cost analyses will be developed to compare recommended restoration projects for development of an implementation strategy. Supporting these discussions in the Strategy Document will be wetland evaluations, an overall corridor assessment, geomorphic evaluations, and additional hydraulic modeling. Less than 30% of the awarded grant budget will be directed to supporting field work

required for the hydrologic and hydraulic modeling, geomorphic evaluations, and general assessment of the overall ecological condition of the creek.

Development of a Water Strategy Document. The Strategy Document will include a summary of the required outreach efforts for Project Component 1 including community engagement, collaboration with stakeholders, outreach to adjacent landowners to the creek corridor, development of educational programs and brochures specific to the restoration of Monument Creek, and partnership building. A summary of the analyses and assessments conducted under Project Component 2 to identify restoration and ecosystem issues in the corridor including a discussion of modeling efforts, geomorphic evaluations, opportunities to improve and/or enhance aquatic and riparian habitat, enhance wetland habitat, and improve water quality. An implementation strategy based on the decision matrix will be presented with a discussion of timelines and potential funding initiatives for effectively implementing the goals and objectives presented in the document. Ongoing and future outreach plans for engaging partners and project stakeholders will be presented along with a detailed capital improvements list for project designs, engineering, environmental, and geomorphic studies required for restoration of the corridor and aquatic habitat. The Water Strategy Document will be a critical resource for use by City of Colorado Springs, CSU and PPW for restoring the natural functions of the creek and providing the community with added resiliency to changes brought on by climate change, drought conditions, and wildfires in the upper portions of the watershed.

Technical Proposal: Evaluation Criteria

Evaluation Criterion A. Project Benefits

The overall project benefit from our proposed Water Strategy planning effort will be a Water Strategy document with implementable project recommendations for the ecological restoration of Monument Creek within the Colorado Springs community. Moreover, the outreach and partnership building that will be a critical part of our planning efforts will lead to the development of a diverse group of public and private stakeholders. These partnerships and collaborative efforts will help leverage resources to implement the goals and objectives in the Water Strategy Document more effectively.

Addressing the Threats to the River-Based Ecosystem and Watershed Health. Monument Creek is a significant tributary to Fountain Creek and a historic tributary habitat and spawning grounds for the Flathead Chub and Arkansas Darter, considered a “State Special Concern” and a “State Threatened” species respectively in Colorado. Of prime importance for our strategic planning efforts is the ecosystem restoration of the Monument Creek corridor within Colorado Springs. A key project benefit will be the evaluation of the current aquatic habitat for populations of fish and invertebrates with a sharp focus on the Flathead Chub and Arkansas Darter. Monument Creek is home to one of the last core populations of the Flathead Chub within Colorado. The population is significantly impacted even during minor flooding, with average recovery times

taking about three years. Increasing refuges for these fish during flooding events will help to increase the population. Monument Creek has been significantly altered from its historic condition over the last 100 years due to urbanization and an overall deterioration of its riverine functions. The study corridor has had a corresponding loss of aquatic and riparian habitat, loss of historic floodplains and creek sinuosity, an infestation of invasive vegetation destabilizing stream banks in the study reach and contributing to sedimentation and habitat degradation, and an overall decrease in water quality impacting downstream Fountain Creek and areas into the Lower Arkansas Valley.

Reports Evaluating Current and Projected Threats to the Ecosystem of Monument Creek. There have been several studies by the USGS evaluating suspended sediment, changes in stream morphology, and the ensuing degradation of water quality of Fountain and Monument Creek watersheds. Our Water Strategy Planning Document will address the identified concerns of compromised aquatic and riparian habitat, excessive sediment transport, and degraded water quality. The current deteriorated condition of the study corridor has contributed significantly to the near threatened species designations for the Flathead Chub and Arkansas Darter by the state. The severe lack of riverine function translates into unstable channel banks and bedform, excessive sediment transport, and near unsustainable aquatic and riparian habitats. Documentation of past technical reports and corresponding databases is included in Sub-Criterion B1.

How do these Threats Impact Specific Water Uses. Our proposed Water Strategy planning efforts for the Bureau of Reclamation's WaterSMART Task A Water Strategy Grant consideration will result in distinct benefits to the aquatic ecosystem of Monument Creek as we address the critical habitat issues for the Flathead Chub and the Arkansas Darter as well as other populations of fish and invertebrates. Morphological considerations will account for bed slope, channel bank stability, sediment load, flow capacity, and introduction of floodplain benching and wetlands through the study corridor to provide resiliency for climate change, drought conditions, and wildfire occurrences in the upper watershed. The salt cedar and Russian olive infestations that have had a significant impact on riparian habitat, streambank erosion, water consumption, and potential wildfire hazards will be addressed with mitigative recommendations to reduce and/or eliminate these invasive species. Resulting improvements to water quality in the creek will have a significant impact on downstream Fountain Creek and areas into the Lower Arkansas Valley as sediment and turbidity are reduced and flow volume is better controlled.

Specific Impacts to Monument Creek Ecosystem and Downstream Water Users. A benefit of our efforts will be an increased resiliency to drought and corresponding climate change as well as the ongoing risk of wildfire in the upper watershed. Our planning efforts will result in implementable project recommendations for improvement of natural features in the creek to include a more stable morphology, improved aquatic habitat, a reduction/elimination of invasive vegetative species, and a reduction in concentrations of E. coli and selenium. Documentation of supporting reports and technical databases is included in Sub-Criterion B1.

How will the Planning Address the Stated Threats. The implementation of projects and strategies that will come out of our Water Strategy planning efforts will address a severely impaired condition in the creek. We are proposing a holistic approach accounting for aquatic and riparian habitats, consideration of morphological relationships of floodplain benching and creek sinuosity through the corridor, expansion of wetlands, an increase in creek flow capacity, and improvement of water quality. Implementation recommendations will be based on a decision matrix developed with input from stakeholders and technical partners.

Benefits from Planning Efforts. Both recommended projects and strategies will revolve around nature-based features and solutions with benefits to both the Colorado Springs community and downstream agricultural water users in areas of the Lower Arkansas Valley. Additional Benefits realized with our Water Strategy efforts will be the community's ability to capitalize on corridor improvements which will provide multiple benefits along with more cost-effective mitigative actions and strategies. Restoration of the creek will contribute significantly to environmental justice for economically disadvantaged neighborhoods that are adjacent to the creek corridor. The goal of our strategy document is to provide an achievable path forward to repairing the existing ecological damage and return the creek to its historic prominence as a natural resource and a focal point for the community.

Evaluation Criterion B. Inclusion of Stakeholders, Stakeholder Support, and Previous Planning Efforts

Fountain Creek Watershed, Inc. dba Pikes Peak Waterways (PPW), a nonprofit organization and Category B Applicant, is dedicated to the protection and enhancement of the ecological integrity of the Fountain and Monument Creek watersheds. The restoration vision for Monument Creek is informed by multiple, recent planning efforts in the community including the 2016 Monument Creek Watershed Restoration Master Plan and the 2023 COS Creek Plan Fountain Creek Watershed Vision & Implementation Plan. The COS Creek Plan laid out a conceptual vision and strategy to restore environmental qualities, promote economic vitality, and enhance recreational opportunities in line with the legacy of the parkway system developed by Colorado Springs founder, General William Jackson Palmer. PPW spearheaded the visionary process that created the COS Creek Plan and has been actively engaged with the City of Colorado Springs, Colorado Springs Utilities, and public and private organizations to facilitate the formation of partnerships to benefit the Fountain Creek and Monument Creek watersheds.

Sub-Criterion B1: Task A – Water Strategy Grants

PPW's Water Strategy Grant proposal for Monument Creek will build on past efforts in developing a comprehensive plan and strategy for the restoration of the creek corridor through Colorado Springs. Targeted workshops will be held throughout the course of the planning efforts to gather input and feedback on the development of ecological restoration strategies for the Monument Creek corridor. Input from stakeholders and technical partners will help shape the vision and identify priority projects and activities discussed in the Water Strategy Document. The

following is a summary of previous studies, planning efforts, and databases supporting this planning effort.

- Characterization of Water Quality and Suspended Sediment during Cold-Season Flows, Warm-Season Flows, and Stormflows in the Fountain and Monument Creek Watersheds, Colorado, 2077-2015, USGS, 2017.
- Evaluation of Water Quality, Suspended Sediment, and Stream Morphology with an Emphasis on Effects of Stormflow on Fountain and Monument Creek Basins, Colorado Springs and Vicinity, Colorado, 1981 through 2001, USGS, 2001.
- Monument Creek Watershed Restoration Master Plan, Matrix Design Group, 2016
- COS Creek Plan, Fountain Creek Watershed Vision & Implementation Plan, Colorado Springs in conjunction with Pikes Peak Waterways, 2022
- Fish Data collected within the greater Fountain and Monument Creek Basins, Colorado
- Invertebrate data collected within the greater Fountain and Monument Creek Basins, Colorado
- USGS Water Data
- Colorado Springs Drainage Criteria Manual Vol. 2 Stormwater Quality Policies, Procedures & BMPs 2014
- Colorado Springs Stormwater Program – Implementation Plan 2016
- Survey of Critical Wetlands and Riparian Areas in El Paso & Pueblo Counties Collaborative Process

PPW’s outreach to key community stakeholders and technical partners for both the Fountain and Monument Creek Basins has been extensive over the past three years and is informed by prior plans and studies for the watersheds. The proposed stakeholder engagement going forward will build on past success and include individuals and organizations that have an impact on the Monument Creek planning efforts. PPW’s efforts in protecting and enhancing the ecological integrity of the Fountain and Monument Creek watersheds have been met with tremendous local and regional support.

Stakeholders. In addition to well over a hundred people on the Fountain Creek Restoration stakeholder’s list, a community list of interested people in the Fountain Creek project has grown to well over 1000. PPW will build on these lists for the Monument Creek strategic planning efforts to engage both stakeholders and technical partners. Some key organizations that remain committed to the planning process are,

- | | |
|---------------------------------|----------------------------|
| Aiken Audubon | Bloom Foundation |
| Colorado College | Colorado Water Trust |
| Great Outdoors Colorado | Lane Foundation |
| Legacy Institute | Nature Conservancy |
| Norwood Development Group | Palmer Land Conservancy |
| Pikes Peak Community Foundation | Trout Unlimited |
| City of Colorado Springs | Colorado Springs Utilities |

Visit Colorado Springs
 Colorado Springs Chamber & EDC
 UCCS/UCCS Development Corp.

Downtown Partnership
 Friends of Monument Valley Park

PPW will continue to reach out to a diverse set of public and private stakeholders for the Monument Creek planning efforts. We have included letters of support from organizations committed to our strategic planning efforts in the appendices to this grant application.

Evaluation Criterion C. Ability to Meet Program Requirements

PPW in conjunction with the City of Colorado Springs is well positioned to initiate the strategic planning efforts for developing a Water Strategy Document for the restoration of Monument Creek in Colorado Springs. The required strategy grant program elements, Outreach and Partnership Building, Analyses, Scoping and Planning Activities, and Development of a Water Strategy Document are shown in **Table 1** below. As shown in our proposed planning schedule, PPW will be solely responsible for the effort for line items shown in orange. PPW and its selected Consultant will partner to conduct line items shown in teal. The Code of Federal Regulations (CFR) procurement policies will be followed by PPW in selecting the successful consultant to partner with for development of a Water Strategy Document for Monument Creek.

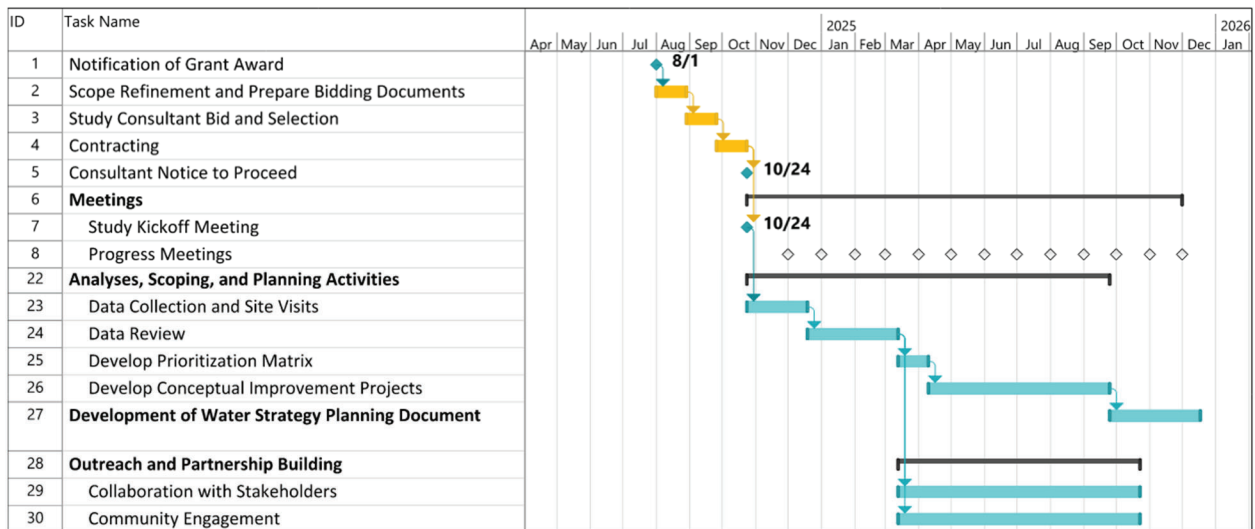


Table 1. Proposed Planning Schedule

Budget Narrative. The full cost of the Project is estimated at \$400,000 for the development of a Water Strategy Document, of which Pikes Peak Waterways (PPW) is requesting \$300,000 from the Water Strategy Grants program. PPW is committed to providing \$100,000. PPW is a 501(c)(3) organization and is fully funded by donations for this planning effort. Upon award of the grant, Pikes Peak Waterways will allocate the required matching funds to the project. **Table 2** below shows the estimated costs for the development of a Water Strategy Document for Monument Creek. A more detailed budget narrative along with a budget spreadsheet detailing the contractual budget is attached in the Appendices.

FUNDING SOURCES	AMOUNT
Non-Federal Entities	
1. Fountain Creek Watershed, Inc. dba Pikes Peak Waterways nonprofit organization (PPW) a Category B Applicant	\$100,000
Non-Federal Subtotal	\$100,000
REQUESTED RECLAMATION FUNDING	\$300,000

Table 2. Summary of Non-Federal and Federal Funding Sources

Evaluation Criterion D. Presidential and Department of the Interior Priorities

Sub-Criterion No. D1. Climate Change

Monument Creek has been significantly altered from its historic condition over the last 100 years. The goal of our strategy document is to provide an achievable path forward to repairing the existing ecological damage. A benefit of our efforts will be an increased resiliency to drought and corresponding climate change as well as the ongoing risk of wildfire in the upper watershed. Recommendations for increased flow capacity in conjunction with re-establishment of floodplains through the study corridor will strengthen the creek’s ability to convey an ever-wider range of flow rates brought on by climate change, drought conditions, and wildfires. This will serve to protect adjacent neighborhoods within Colorado Springs as well as downstream agricultural water users in areas of the Lower Arkansas Valley. At the same time, proposed mitigative strategies, measures, and restoration projects from the Water Strategy Document will serve to improve the ecological functions of the creek and ecosystem diversity.

The goals and objectives of our proposed Water Strategy planning efforts for the restoration of Monument Creek will significantly increase Colorado Springs’ resilience to climate change and the corresponding higher peak flood discharges commonly associated with drought and wildfires in the watershed. Our planning emphasis on improvement of creek morphology, reestablishment of floodplains, and increased flow capacity through the study corridor will provide critical capability for the creek to convey higher flood peaks and volumes in a controlled manner providing distinct benefit for the Colorado Springs community, downstream Fountain Creek, and agricultural water users in the Lower Arkansas Valley.

Sub-Criterion No. D2. Disadvantaged or Underserved Communities

Monument Creek plays a significant role in the local landscape and can be integrated into broader future park planning and management strategies to promote environmental stewardship and public enjoyment of the community’s natural resources. While not a driving goal for our planning strategy, restoration of the creek will contribute significantly to environmental justice for economically disadvantaged neighborhoods that are adjacent to the creek corridor.

Tract 08041001500 located at the southwest end of the corridor is identified as disadvantaged in the Council on Environmental Quality’s Climate and Economic Justice Screening Tool for clean transit, affordable and sustainable housing, and critical clean water and waste infrastructure. This neighborhood is at or above the 65th percentile for low income. Restoration of the creek will benefit this neighborhood economically, and with improved water quality and reduced flood risk.

Tract 08041001104 located along the lower west side of the study corridor is identified as disadvantaged in the Justice 40 Screening Tool for clean transit and critical clean water and waste infrastructure. This neighborhood is at or above the 65th percentile for low income. Restoration of the creek will benefit this neighborhood economically, and with improved water quality and reduced flood risk.

Tract 08041001101 located along the east side of the corridor is identified as disadvantaged in the Justice 40 Screening Tool for critical clean water and waste infrastructure. This neighborhood is at or above the 65th percentile for low income. Restoration of the creek will benefit this neighborhood economically, and with improved water quality.

Tract 08041000302 located along the east side of the creek at the northern end of the study corridor is identified as disadvantaged in the Justice 40 Screening Tool for critical clean water and waste infrastructure, health burdens, and training and workforce development. This neighborhood is at or above the 90th percentile for poverty with 10% of the neighborhood population of people ages 25 years or older having not graduated high school. Improving the creek corridor would benefit this neighborhood and encourage redevelopment and an influx of private sector investment.

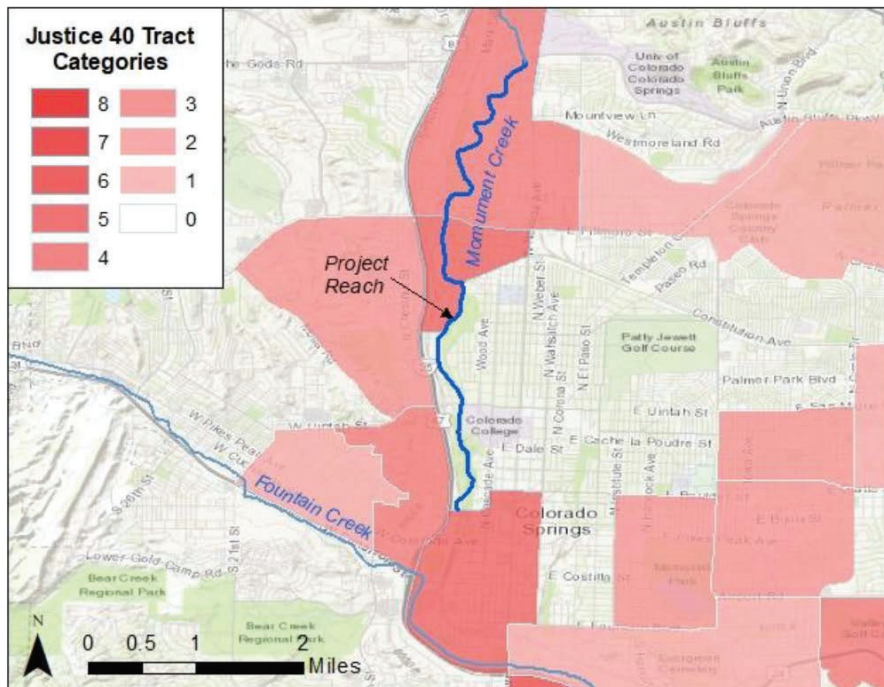


Figure 2. Justice 40 Tracts Map for Monument Creek

Our planning efforts will have a positive impact upon economically disadvantaged neighborhoods from Bijou Rd. to Garden of the Gods Road including areas currently mapped in the Justice 40 tracts map. Restoration of Monument Creek will encourage private investment and renewal of adjacent neighborhoods with redevelopment oriented and focused on the creek.

Evaluation Criterion E. Nexus to Reclamation

Our Grant proposal has a nexus to Reclamation from the improved water quality for downstream municipal and agricultural water sources resulting from the environmental restoration of Monument Creek. Monument Creek is a significant tributary to Fountain Creek, particularly during snowmelt and precipitation events. Fountain Creek contributes a substantial amount of water to the Arkansas River and is a significant source for agricultural water supply for areas south of Colorado Springs and into the Lower Arkansas Valley. The proposed improvements for Monument Creek that will come out of our Water Strategy Document will improve the overall water quality of municipal and agricultural water sources by decreasing sediment and turbidity, better controlling flow volumes, and providing additional water quality improvements through expanded wetlands and riparian vegetation.

Historically, the Fountain Creek watershed has transported an excessive amount of sediment to downstream communities and agricultural areas. Improved water quality and reduced sediment transport will have a positive impact upon the Fountain Valley Authority, the Pueblo Reservoir managed by the USBR, and the USBR Frying Pan-Arkansas Project.

Water Strategy Grants

May 23, 2024

BUREAU OF
RECLAMATION



MONUMENT CREEK WATER STRATEGY DOCUMENT PROJECT APPENDIX

Notice of Funding Opportunity No. R23AS00109

WaterSMART Planning and Project Design Grants For Fiscal Year 2023 and 2024

APPLICANT

Fountain Creek Watershed, Inc. dba
Pikes Peak Waterways
13 S. Tejon Street, Suite 200
Colorado Springs, CO 80903

PROJECT MANAGER

Chris Lieber
Fountain Creek Watershed, Inc. dba
Pikes Peak Waterways
13 S. Tejon Street, Suite 200
Colorado Springs, CO 80903
clieber@nescolorado.com | 719-440-5102



Environmental and Cultural Resources Compliance

The proposed project scope of work includes only limited field work and will utilize publicly available data. Field work will be limited to site visits by the Consultant's personnel to observe and document existing site conditions and identify areas with problems to be addressed by the Water Strategy Document. Field investigations will be conducted from publicly accessible trails within the project boundary.

H.1 Environmental and Cultural Resources Considerations

Field work for the proposed project will not impact the surrounding environment. Field investigations will not disturb soil, air, water, or animal habitat.

The proposed project will not affect any species listed, or proposed to be listed, as a Federal threatened or endangered species, or designated critical habitat.

Monument Creek and is anticipated to be classified as Waters of the United States. Adjacent areas within the project boundary may also be classified as Waters of the United States in future investigations outside the scope of this project. Field work will not disturb Waters of the United States.

The proposed project will not result in modifications or effects to any irrigation system.

No impacts to any buildings, structures, or features listed or eligible for listing on the National Register of Historic Places will be disturbed because of this project.

The proposed project will not affect any known or unknown archaeological sites within the project area.

The proposed project will not have disproportionately high or adverse effect on low income or minority populations.

The proposed project will not limit access to, and ceremonial use of, sacred sites or result in other impacts on Tribal lands.

The proposed project will not contribute to the introduction, continued existing, or spread of noxious weeds or non-native species known to occur in the area.

H.1.1 National Environmental Policy Act

The proposed project will produce a Water Strategy Document, which is expected to be a mostly in-office effort, except for field visits. The proposed project does not include any activities that could impact the environment.

H.1.2 National Historic Preservation Act

The proposed project will produce a Water Strategy Document, which is expected to be a mostly in-office effort, except for field visits. The proposed project does not include any activities that could a listed or proposed to be listed structure or feature.

H.1.3 Endangered Species Act

The proposed project will produce a Water Strategy Document, which is expected to be a mostly in-office effort, except for field visits. The proposed project does not include any activities that could impact any species listed, or proposed to be listed, as a threatened or endangered species or designated critical habitat.

Required Permits and Approvals

The proposed project scope of work includes only limited field work. Field work will be limited to site visits by the Consultant's personnel to observe and document existing site conditions and identify areas with problems to be addressed by the Water Strategy Document. Field investigations will be conducted from publicly accessible trails within the project boundary. No permits or other regulatory approvals are anticipated for this effort.

Supplemental Statements and Disclosures

Overlap or Duplication of Effort Statement

There are no overlapping or duplicated efforts for this application.

Monument Creek Restoration and T-Gap Levee Rehabilitation has been identified as a project in the *2024 Report to Congress on Future Water Resources Development*. Projects identified within the 2024 report may become authorized upon approval by Congress, which has not occurred at the time of submittal. If the US Army Corps of Engineers is authorized and funded, this Water Strategy document will allow us to complement the USACE project and inform how that project will move forward and assist the USACE in their execution of the project.

Conflict of Interest Disclosure Statement

No actual or potential conflict of interest exists at the time of submission of this application for the applicant and its partners.

Uniform Audit Disclosure Statement

Fountain Creek Watershed, Inc. d/b/a Pikes Peak Waterways does not meet the threshold for the Single Audit reporting requirements at the time submission. Pikes Peak Waterways was not required to submit a Single Audit report for the most recently completed fiscal year.

Disclosure of Lobbying Activities

Fountain Creek Watershed, Inc. d/b/a Pikes Peak Waterway has not contracted or paid any lobbying entity. Therefore, Form SF-LLL is not required for this application.

**ADDENDUM TO THE COLLABORATIVE AGREEMENT
BY AND AMONG
THE CITY OF COLORADO SPRINGS, COLORADO SPRINGS
UTILITIES AND PIKES PEAK WATERWAYS**

This Addendum ("Addendum") to the Collaborative Agreement ("Collaborative Agreement") by and among The City of Colorado Springs ("City"), Colorado Springs Utilities ("Utilities"), and Fountain Creek Watershed, Inc. d/b/a Pikes Peak Waterways ("PPW") is effective as of the date of the last signature hereto. The City, Utilities, and PPW are collectively referred to herein as "Parties" and individually as a "Party."

BACKGROUND

- A. Effective November 18, 2022, the Parties entered into the Collaborative Agreement for the purpose of implementing a Project defined in Article 1.10 of the Agreement as follows:

"Project" means the work to be performed under this Agreement on the Monument Creek and Fountain Creek corridors to implement the COS Creek Plan and any subsequent additions, modifications, or amendments thereto. Such additions, modifications, or amendments may result in an expansion of the portion of the Monument Creek and Fountain Creek Watersheds covered by the COS Creek Plan to include portions to the north and south of the current COS Creek Plan.

The COS Creek Plan is attached to the Collaborative Agreement as Exhibit 1.

- B. The COS Creek Plan currently extends north along the Monument Creek corridor to its intersection with West Fillmore Street.
- C. On August 24, 2023, the City, through its Stormwater Enterprise, filed a 7001 Application with the U.S. Army Corps of Engineers for a project entitled "Monument Creek Restoration and T- Gap Rehabilitation." The proposed project described in the 7001 Application extends along a seven-mile reach of Monument Creek north to its intersection with Garden of the Gods Road and includes the Templeton Gap Floodway.
- D. The Parties are desirous of aligning the scope of the COS Creek Plan with the scope of the project described in the City's 7001 Application. Therefore, the Parties want to revise the COS Creek Plan to include that portion of Monument Creek corridor north from West Fillmore Street to the corridor's intersection with Garden of the Gods Road and to add the Templeton Gap Floodway to the COS Creek Plan.

NOW THEREFORE, by this Addendum, the Parties agree to expand the scope of the Project defined in the Collaborative Agreement as follows:

1. The COS Creek Plan, attached to the Collaborative Agreement as Exhibit 1, will be replaced with a Revised COS Creek Plan, in the form attached to this Addendum as Attachment A, which adds that portion of the Monument Creek corridor north from the corridor's intersection with West Fillmore Street to its intersection with Garden of the Gods Road; and
2. The Templeton Gap Floodway will be added to the COS Creek Plan by an addendum to the Plan in the form attached to this Addendum as Attachment B.

IN WITNESS WHEREOF, the Parties hereto have caused this Addendum to the Collaborative Agreement to be executed as of the dates set forth below by their duly authorized representatives.

THE CITY OF COLORADO SPRINGS

By: *Blessing Mobolade*
Blessing Mobolade, Mayor

Date: 5/7/2024

ATTEST:

Sarah B. Johnson
Sarah B. Johnson, City Clerk



COLORADO SPRINGS UTILITIES

By: *Travas Deal*
Travas Deal, Chief Executive Officer

Date: 4-11-2024

Approved as to Form:

Rebecca Greenberg

FOUNTAIN CREEK WATERSHED, INC.

By: *Jan Martin*
Jan Martin, President

Date: 3/28/24

Collaborative Agreement and Letter of Partnership



May 14, 2024

Camille Calimlim Touton
Commissioner
US Bureau of Reclamation
1849 C Street NW
Washington DC 20240-0001

Dear Commissioner Touton,

I am writing on behalf of Colorado Springs Stormwater Enterprise to express support of the WaterSMART Water Strategy Grant (WSG) application, prepared by Pikes Peak Waterways, for the COS Creek Plan stream restoration project. The City of Colorado Springs is acting in partnership with Fountain Creek Watershed, Inc (conducting activities as Pikes Peak Waterways) under a formal collaboration agreement and agrees to the submittal and content of the application. The City of Colorado Springs, principally through its Stormwater Enterprise, intends to be engaged with all aspects of the project through shared project management, oversight at leadership levels, and participation in strategy development, workshops, studies, and other related activities.

The health and vitality of urban streams are essential to both human and wildlife communities. Perennial streams in semi-arid areas, such as Monument Creek, have attracted settlement since prehistoric times. Monument Creek flows through the heart of Colorado Springs and will be the centerpiece of a vibrant greenway. The reach has been significantly altered from its historic condition due to urban development along its length. Restoration and enhancement of Monument Creek can lead to:

- Restoration of the creek's environmental qualities, aquatic ecosystems, and riverine function;
- Promotion of economic vitality in economically disadvantaged neighborhoods;
- Incentivizing private sector investments;
- Expansion of recreational opportunities; and
- Creating a strong sense of place for the Colorado Springs community.

Pikes Peak Waterways, working in a formal collaboration with the City of Colorado Springs Stormwater Enterprise and Colorado Springs Utilities, is leading the efforts to implement the vision of the COS Creek Plan. The Water Strategy Planning Document that will be created is a critical element and next step to implement the greater vision of the COS Creek Plan, tie into restoration projects upstream and downstream of the area of interest and provide a framework for the design and construction of improvements for the future including mitigation strategies for project challenges. The Water Strategy Planning Document will be a valuable tool to enhance community engagement and excitement.

The Colorado Springs Stormwater Enterprise respectfully requests that the Bureau of Reclamation consider the importance of this Water Strategy Planning Document for the successful revitalization of the Monument Creek corridor and urges your favorable consideration of the application.

Sincerely,



Richard Mulledy, PE
Deputy Public Works Director, Enterprises
Stormwater/Parking System
City of Colorado Springs
30 S. Nevada Ave., Suite 401
Colorado Springs, CO 80901
Cell: 719-200-1466

Letters of Support

1. Colorado Springs Office of the Mayor
2. Colorado Springs Utilities
3. Colorado Springs Chamber and EDC
4. Colorado College
5. Culebra Properties
6. Downtown Colorado Springs Partnership
7. El Pomar Foundation
8. Fountain Creek Watershed District
9. Friends of Monument Valley Park
10. Norwood Development
11. Nunn Construction
12. Palmer Land Conservancy
13. Pikes Peak Real Estate Foundation
14. Pikes Peak Regional Building Department
15. The Nature Conservancy
16. Trails and Open space Coalition
17. Trout Unlimited
18. University of Colorado, Colorado Springs Development Corporation
19. US Geological Survey
20. Visit Colorado Springs
21. Weidner Apartment Homes



Yemi Mobolade
Mayor

May 21, 2024

Camille Calimlim Touton
Commissioner
US Bureau of Reclamation
1849 C Street NW
Washington DC 20240-0001

Dear Commissioner Touton,

On behalf of the City of Colorado Springs, I am pleased to present our letter of support for the WaterSMART Water Strategy Grant (WSG) application, prepared by Pikes Peak Waterways, for the COS Creek Plan stream restoration project. Like you, our citizens and I believe in the mission of the Bureau of Reclamation to manage, develop, and protect water and related resources in an environmentally and economically sound manner in the interest of American public. My administration is working hard to develop strategies to promote this vision in our local community and specifically along both our Monument and Fountain Creek waterways. The 2024 WaterSMART Planning and Project Design grant application for the **Fountain Creek Restoration Project**, will focus on developing an Aquatic habitat restoration plan which is essential to restore the health and vitality of Fountain Creek, which is approximately 75 miles long and is fed by a tributary area of over 900 square miles.

This project represents a critical next step in realizing the long-term vision for the creek as articulated in the COS Creek Plan, a community-wide long-range planning document that incorporates the values and goals of numerous organizations, neighborhoods, and local government representatives. Specifically, the COS Creek Plan establishes a comprehensive vision for the future investments and stewardship of the Fountain Creek Watershed with a specific focus on segments of the Monument and Fountain creeks adjacent to Downtown Colorado Springs. The COS Creek Plan establishes an implementable vision, which respects our communities' values, responds to infrastructure needs, and leverages opportunities.

The WaterSMART Planning and Project Design funding is absolutely necessary to provide support for this highly degraded stretch of Fountain Creek. The reach is significantly altered from its historic condition due to urban development along its length. The reach is highly confined with no floodplain terracing, the natural habitat is deteriorated, and most of the natural wetlands are destroyed and have been replaced mostly by invasive species. Design work will be used to improve the floodplains, re-establish floodplain terraces to create a range of native plant communities and wildlife habitats, allowing for more diverse and extensive passive and nature-based public recreation uses.

I enthusiastically request that the Bureau of Reclamation consider the importance of these improvements and strongly consider the funding of this project. Thank you for your consideration.

Onward and upward,

Blessing A Mobolade
Mayor, City of Colorado Springs

30 South Nevada Avenue, Suite 601 • TEL 719-385-5900

Mailing Address: Post Office Box 1575, Mail Code 610 • Colorado Springs, Colorado 80901-1575



Colorado Springs Utilities

It's how we're all connected

Camille Calimlim Touton
Commissioner
US Bureau of Reclamation
1849 C Street NW
Washington DC 20240-0001

May 20, 2024

Dear Commissioner Touton,

I am writing on behalf of Colorado Springs Utilities to express support of the WaterSMART Water Strategy Grant (WSG) application, prepared by Pikes Peak Waterways, for the COS Creek Plan stream restoration project.

The health and vitality of urban streams are essential to both human and wildlife communities. Perennial streams in semi-arid areas, such as Monument Creek, have attracted settlement since prehistoric times. Monument Creek flows through the heart of Colorado Springs and will be the centerpiece of a vibrant greenway. The reach has been significantly altered from its historic condition due to urban development along its length. Restoration and enhancement of Monument Creek can lead to:

- Restoration of the creek's environmental qualities, aquatic ecosystems, and riverine function;
- Promotion of economic vitality in economically disadvantaged neighborhoods;
- Incentivizing private sector investments;
- Expansion of recreational opportunities; and
- Creating a strong sense of place for the Colorado Springs community.

Pikes Peak Waterways, in collaboration with the City of Colorado Springs Stormwater Enterprise and Colorado Springs Utilities, is leading the efforts to implement the vision of the COS Creek Plan. The Water Strategy Planning Document that will be created is a critical element and next step to implement the greater vision of the COS Creek Plan, tie into restoration projects upstream and downstream and provide a framework for the design and construction of improvements including mitigation strategies for project challenges. The Water Strategy Planning Document will be a valuable tool to enhance community engagement and excitement.

The Colorado Springs Utilities respectfully requests that the Bureau of Reclamation consider the importance of this Water Strategy Planning Document for the successful revitalization of the Monument Creek corridor and urges your favorable consideration of the application.

Respectively,

Lisa Barbato
Chief System Planning and Projects Officer
Colorado Springs Utilities

121 South Tejon Street Colorado Springs, CO 80903
Phone 719.668.8740
csu.org

May 13, 2024

Camille Calimlim Touton
Commissioner
US Bureau of Reclamation
1849 C Street NW
Washington DC 20240-0001

Dear Commissioner Touton,

I am writing on behalf of Colorado Springs Chamber & Economic Development Corporation (CSCEDC) to express support of the WaterSMART Water Strategy Grant (WSG) application, prepared by Pikes Peak Waterways, for the Colorado Springs Creek Plan stream restoration project.

The health and vitality of urban streams are essential to both human and wildlife communities. Perennial streams in semi-arid areas, such as Monument Creek, have attracted settlement since prehistoric times. Monument Creek flows through the heart of Colorado Springs and will be the centerpiece of a vibrant greenway. The reach has been significantly altered from its historic condition due to urban development along its length. Restoration and enhancement of Monument Creek can lead to:

- Restoration of the creek's environmental qualities, aquatic ecosystems, and riverine function;
- Promotion of economic vitality in economically disadvantaged neighborhoods;
- Incentivizing private sector investments;
- Expansion of recreational opportunities; and
- Creating a strong sense of place for the Colorado Springs community.

Pikes Peak Waterways, working in a formal collaboration with the City of Colorado Springs Stormwater Enterprise and Colorado Springs Utilities, is leading the efforts to implement the vision of the COS Creek Plan. The Water Strategy Planning Document that will be created is a critical element and next step to implement the greater vision of the COS Creek Plan, tie into restoration projects upstream and downstream of the area of interest, and provide a framework for the design and construction of improvements for the future including mitigation strategies for project challenges. The Water Strategy Planning Document will be a valuable tool to enhance community engagement and excitement.

The CSCEDC respectfully requests that the Bureau of Reclamation consider the importance of this Water Strategy Planning Document for the successful revitalization of the Monument Creek corridor and urges your favorable consideration of the application. Please do not hesitate to contact me at (719) 500-9485 or JReederKleymeyer@cscedc.com.

Sincerely,



Johnna Reeder Kleymeyer
President and Chief Executive Officer



Lori Seager
Vice President for Finance & Chief Financial Officer
(719) 389-6693

14 E. Cache La Poudre St.
Colorado Springs, CO 80903

May 17, 2024

Camille Calimlim Touton
Commissioner
US Bureau of Reclamation
1849 C Street NW
Washington DC 20240-0001

Dear Commissioner Touton,

I am writing on behalf of Colorado College to express support of the WaterSMART Water Strategy Grant (WSG) application, prepared by Pikes Peak Waterways, for the COS Creek Plan stream restoration project. Colorado College stakeholders, including students, faculty, staff, and the local community, stand to gain significantly from the Water Smart project. This initiative promises to foster a culture of sustainable water use and management within the campus, directly contributing to a reduced environmental footprint. Students will benefit from hands-on learning opportunities, gaining practical experience in water conservation strategies that they can carry into their future careers and personal lives. Faculty members will have a new avenue for research and curriculum development, allowing them to integrate cutting-edge water management practices into their teachings. Colorado College leadership will be supporting efforts that exemplify their focus on sustainability, which will then enhance the institution's reputation and appeal to prospective students who value environmental responsibility. Finally, the local community will experience the positive effects of reduced water demand on the regional ecosystem, which can lead to healthier watersheds and long-term water security for all. Overall, the Water Smart project embodies a commitment to stewardship that resonates with the core values of Colorado College and its various constituents.

The health and vitality of urban streams are essential to both human and wildlife communities. Perennial streams in semi-arid areas, such as Monument Creek, have attracted settlement since prehistoric times. Monument Creek flows through the heart of Colorado Springs and will be the centerpiece of a vibrant greenway. The reach has been significantly altered from its historic condition due to urban development along its length. Restoration and enhancement of Monument Creek can lead to:

- Restoration of the creek's environmental qualities, aquatic ecosystems, and riverine function;
- Promotion of economic vitality in economically disadvantaged neighborhoods;
- Incentivizing private sector investments;
- Expansion of recreational opportunities; and
- Creation of a strong sense of place for the Colorado Springs community.

Pikes Peak Waterways, working in a formal collaboration with the City of Colorado Springs Stormwater Enterprise and Colorado Springs Utilities, is leading the efforts to implement the vision of the COS Creek Plan. The Water Strategy Planning Document that will be created is a critical element and next step to implement the greater vision of the COS Creek Plan, tie into restoration projects upstream and downstream of the area of interest and provide a framework for the design and construction of improvements for the future including mitigation strategies for project challenges. The Water Strategy Planning Document will be a valuable tool to enhance community engagement and excitement.

Colorado College respectfully requests that the Bureau of Reclamation consider the importance of this Water Strategy Planning Document for the successful revitalization of the Monument Creek corridor and urges your favorable consideration of the application.

Sincerely,

A handwritten signature in blue ink that reads "Lori Seager". The signature is written in a cursive, flowing style.

Lori Seager, Vice President for Finance and Chief Financial Officer
The Colorado College

(719) 389-6953 and email: lseager@coloradocollege.edu

May 3, 2024

Camille Calimlim Touto, Commissioner
US Bureau of Reclamation
1849 C Street NW
Washington, DC 20240-0001

Dear Commissioner Touton,

I am writing on behalf of Culebra Properties to express support of the WaterSMART Water Strategy Grant (WSG) application, prepared by Pikes Peak Waterways, for the COS Creek Plan stream restoration project.

The health and vitality of urban streams are essential to both human and wildlife communities. Perennial streams in semi-arid areas, such as Monument Creek, have attracted settlement since prehistoric times. Monument Creek flows through the heart of Colorado Springs and will be the centerpiece of a vibrant greenway. The reach has been significantly altered from its historic condition due to urban development along its length. Restoration and enhancement of Monument Creek can lead to:

- Restoration of the creek's environmental qualities, aquatic ecosystems, and riverine function;
- Promotion of economic vitality in economically disadvantaged neighborhoods;
- Incentivizing private sector investments;
- Expansion of recreational opportunities; and
- Creating a strong sense of place for the Colorado Springs community.

Pikes Peak Waterways, working in a formal collaboration with the City of Colorado Springs Stormwater Enterprise and Colorado Springs Utilities, is leading the efforts to implement the vision of the COS Creek Plan. The Water Strategy Planning Document that will be created is a critical element and next step to implement the greater vision of the COS Creek Plan, tie into restoration projects upstream and downstream of the area of interest and provide a framework for the design and construction of improvements for the future including mitigation strategies for project challenges. The Water Strategy Planning Document will be a valuable tool to enhance community engagement and excitement.

Culebra Properties respectfully requests that the Bureau of Reclamation consider the importance of this Water Strategy Planning Document for the successful revitalization of the Monument Creek corridor and urges your favorable consideration of the application.

Sincerely,



Philip Lane
Culebra Properties
719-440-1393
mntndude@gmail.com



May 3, 2024

Camille Calimlim Touton
Commissioner
US Bureau of Reclamation
1849 C Street NW
Washington DC 20240-0001

Dear Commissioner Touton,

I am writing on behalf of Downtown Partnership of Colorado Springs to express strong support of the WaterSMART Water Strategy Grant (WSG) application, prepared by Pikes Peak Waterways, for the COS Creek Plan stream restoration project.

Downtown Partnership is the leading voice for Downtown Colorado Springs, ensuring that our city center thrives as the economic, civic and cultural heart of the Pikes Peak Region. The area experiences over 12 million visits annually, with a workforce of 27,000 and a growing residential population. The Partnership continues to champion and prioritize the furtherance of the COS Creek Plan as an essential and catalytic initiative that will positively impact not only the residents and businesses near the creek but residents and visitors from throughout the region.

The health and vitality of our urban streams are essential to both human and wildlife communities. Perennial streams in semi-arid areas, such as Monument Creek, have attracted settlement since prehistoric times. Monument Creek flows through the heart of our city and will be the centerpiece of a vibrant greenway. The reach has been significantly altered from its historic condition due to urban development along its length. Restoration and enhancement of Monument Creek can lead to:

- Restoration of the creek's environmental qualities, aquatic ecosystems, and riverbank function;
- Fostering of economic vitality in disadvantaged neighborhoods;
- Incentivizing of private sector investment;
- Expansion of recreational opportunities; and
- Creation of a strong sense of place for the Colorado Springs community.

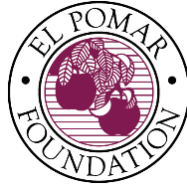
Pikes Peak Waterways, working in a formal collaboration with the City of Colorado Springs Stormwater Enterprise and Colorado Springs Utilities, is leading the efforts to implement the vision of the COS Creek Plan. The Water Strategy Planning Document that will be created is a critical element and next step to implement the greater vision of the COS Creek Plan, tie into restoration projects upstream and downstream of the area of interest, and provide a framework for the design and construction of improvements for the future, including mitigation strategies for project challenges. The Water Strategy Planning Document will be a valuable tool to enhance community engagement and excitement.

Downtown Partnership respectfully requests that the Bureau of Reclamation consider the importance of this Water Strategy Planning Document for the successful revitalization of the Monument Creek corridor and urges your favorable consideration of the application.

Sincerely,

A handwritten signature in black ink, appearing to read "Susan Edmondson". The signature is fluid and cursive, with a long horizontal stroke extending to the right.

Susan Edmondson, President & CEO
susan@DowntownCS.com



KYLE H. HYBL

President and Chief Executive Officer

May 16, 2024

Camille Calimlim Touton, Commissioner
US Bureau of Reclamation
1849 C Street NW
Washington DC 20240-0001

Dear Commissioner Touton,

I am writing on behalf of El Pomar Foundation to express support of the WaterSMART Water Strategy Grant (WSG) application, prepared by Pikes Peak Waterways, for the COS Creek Plan stream restoration project.

The health and vitality of urban streams are essential to both human and wildlife communities. Perennial streams in semi-arid areas, such as Monument Creek, have attracted settlement since prehistoric times. Monument Creek flows through the heart of Colorado Springs and will be the centerpiece of a vibrant greenway. The reach has been significantly altered from its historic condition due to urban development along its length. Restoration and enhancement of Monument Creek can lead to:

- Restoration of the creek's environmental qualities, aquatic ecosystems, and riverine function;
- Promotion of economic vitality in economically disadvantaged neighborhoods;
- Incentivizing private sector investments;
- Expansion of recreational opportunities; and
- Creating a strong sense of place for the Colorado Springs community.

Pikes Peak Waterways, working in a formal collaboration with the City of Colorado Springs Stormwater Enterprise and Colorado Springs Utilities, is leading the efforts to implement the vision of the COS Creek Plan. The Water Strategy Planning Document that will be created is a critical element and next step to implement the greater vision of the COS Creek Plan, tie into restoration projects upstream and downstream of the area of interest and provide a framework for the design and construction of improvements for the future including mitigation strategies for project challenges. The Water Strategy Planning Document will be a valuable tool to enhance community engagement and excitement.

El Pomar Foundation respectfully requests that the Bureau of Reclamation consider the importance of this Water Strategy Planning Document for the successful revitalization of the Monument Creek corridor and urges your favorable consideration of the application.

Sincerely,

A handwritten signature in black ink, appearing to read "K. H. Hybl".

Kyle H. Hybl

EL POMAR FOUNDATION
10 Lake Circle
Colorado Springs, Colorado 80906
(719) 633-7733

May 17, 2024

Camille Calimlim Touton
Commissioner, US Bureau of Reclamation
1849 C Street NW
Washington DC 20240-0001

Dear Commissioner Touton,

I am writing on behalf of the Fountain Creek Watershed Flood Control and Greenway District to express support for the WaterSMART Water Strategy Grant (WSG) application, prepared by Pikes Peak Waterways, for the COS Creek Plan stream restoration project.

Our District was established in 2009 to protect and enhance the health of the Fountain Creek Watershed. We do this through creek restoration projects and engaging public education programming. We collaborate with local and state governments, non-profits, businesses, churches, schools and neighborhood groups. Pikes Peak Waterways has been a strong partner in our shared interests related to watershed health. Given the multitude of water users, interests, risks and opportunities in our home watershed, we applaud any efforts that support our mission, and this WaterSMART Strategy Grant could help to make a significant impact for local waterways and for those downstream.

The health and vitality of urban streams are essential to both human and wildlife communities. Perennial streams in semi-arid areas, such as Monument Creek, have attracted settlement since prehistoric times. Monument Creek flows through the heart of Colorado Springs and will be the centerpiece of a vibrant greenway. The reach has been significantly altered from its historic condition due to urban development along its length. Restoration and enhancement of Monument Creek can lead to:

- Restoration of the creek's environmental qualities, aquatic ecosystems, and riverine function;
- Promotion of economic vitality in economically disadvantaged neighborhoods;
- Incentivizing private sector investments;
- Expansion of recreational opportunities; and
- Creating a strong sense of place for the Colorado Springs community.

Pikes Peak Waterways, working in a formal collaboration with the City of Colorado Springs Stormwater Enterprise and Colorado Springs Utilities, is leading the efforts to implement the vision of the COS Creek Plan. The Water Strategy Planning Document that will be created is a critical element and next step to implement the greater vision of the COS Creek Plan, tie into restoration projects upstream and downstream of the area of interest, and provide a framework for the design and construction of improvements for the future including mitigation strategies for project challenges. The Water Strategy Planning Document will be a valuable tool to enhance community engagement and excitement.

The Fountain Creek Watershed District respectfully requests that the Bureau of Reclamation consider the importance of this Water Strategy Planning Document for the successful revitalization of the Monument Creek corridor and urges your favorable consideration of the application.

Sincerely,



Allison Schuch
Executive Director, Fountain Creek Watershed District
PO Box 8100, Colorado Springs, CO 80933
fountainckdist@gmail.com
719.650.7474



P.O. Box 734, Colorado Springs, CO 80901

May 17, 2024

Camille Calimlim Touton
Commissioner
US Bureau of Reclamation
1849 C Street NW
Washington DC 20240-0001

Dear Commissioner Touton,

I am writing on behalf of the Friends of Monument Valley Park to express support of the WaterSMART Water Strategy Grant (WSG) application, prepared by Pikes Peak Waterways, for the COS Creek Plan stream restoration project.

The Friends of Monument Valley Park is an all-volunteer nonprofit that was formed to preserve, promote, and support Monument Valley Park. The park was created by our city's founder in 1907 and is located in downtown Colorado Springs and extends for two miles alongside Monument Creek. Although the creek runs through the center of the park, access to the creek is minimal and difficult due to steep walls built along the banks in the 1930s. The COS Creek Plan will remedy this situation by greatly enhancing access to the creek for park users and by making it an environmentally friendly place that park users will enjoy. In addition, the implementation of the COS Creek Plan will bring positive activities to currently blighted areas neighboring the park along the creek and will motivate our community to care for our city's waterways and the lands adjacent to them.

The health and vitality of urban streams are essential to both human and wildlife communities. Perennial streams in semi-arid areas, such as Monument Creek, have attracted settlement since prehistoric times. Monument Creek flows through the heart of Colorado Springs and will be the centerpiece of a vibrant greenway. The reach has been significantly altered from its historic condition due to urban development along its length. Restoration and enhancement of Monument Creek can lead to:

- Restoration of the creek's environmental qualities, aquatic ecosystems, and riverine function;
- Promotion of economic vitality in economically disadvantaged neighborhoods;
- Incentivizing private sector investments;
- Expansion of recreational opportunities; and
- Creating a strong sense of place for the Colorado Springs community.

Pikes Peak Waterways, working in a formal collaboration with the City of Colorado Springs Stormwater Enterprise and Colorado Springs Utilities, is leading the efforts to implement the vision of the COS Creek Plan. The Water Strategy Planning Document that will be created is a critical element and next step to implement the greater vision of the COS Creek Plan, tie into restoration projects upstream and downstream of the area of interest and provide a framework for the design and construction of improvements for the future including mitigation strategies for project challenges. The Water Strategy Planning Document will be a valuable tool to enhance community engagement and excitement.

The Friends of Monument Valley Park respectfully requests that the Bureau of Reclamation consider the importance of this Water Strategy Planning Document for the successful revitalization of the Monument Creek corridor and urges your favorable consideration of the application.

Sincerely,



Terese E. Peisner
President, Friends of Monument Valley Park
(719) 322-4995
teripeisner@comcast.net

NORWOOD

May 12, 2024

VIA EMAIL

Camille Calimlim Touton
Commissioner
US Bureau of Reclamation
1849 C Street NW
Washington DC 20240-0001

Dear Commissioner Touton,

On behalf of Norwood Development Group, we write to express our robust support for the WaterSMART Water Strategy Grant (WSG) application prepared by Pikes Peak Waterways for the COS Creek Plan stream restoration project.

As major real estate developers, land and property owners throughout Downtown Colorado Springs – and specifically within the Park Union neighborhood, adjacent to the section of the creek that fronts America the Beautiful Park, we directly witness the impact of the creek's current state on our community. The COS Creek Plan's goals to restore the aquatic ecosystems, promote economic vitality in disadvantaged neighborhoods, incentivize private sector investments, expand recreational opportunities, and create a strong sense of place for the Colorado Springs community align perfectly with our mission and the interests of our stakeholders, tenants, and residents.

The reach of Monument Creek that flows adjacent to our properties has been significantly altered from its historic condition due to urban development – both from the expansion of the city and the construction of Interstate 25. The restoration and enhancement of this vital urban stream are crucial not only for the environmental and recreational benefits but also for the economic opportunities it will unlock. These enhancements will attract new businesses, boost property values, and increase the quality of life for the residents of the Park Union neighborhood.

The collaboration of Pikes Peak Waterways with the City of Colorado Springs Stormwater Enterprise and Colorado Springs Utilities is a promising step toward the successful implementation of the COS Creek Plan. We believe that the creation of the Water Strategy Planning Document is a critical element and next step to implement the greater vision of

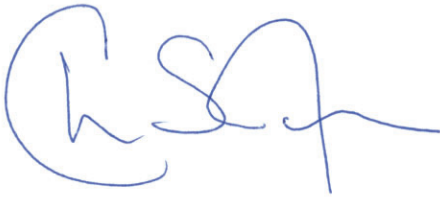


NORWOOD

the COS Creek Plan. It will serve as a framework for the design and construction of future improvements, including mitigation strategies for project challenges.

Norwood Development Group respectfully requests that the Bureau of Reclamation consider the importance of this Water Strategy Planning Document for the successful revitalization of the Monument Creek corridor and urges your favorable consideration of the application.

Sincerely,



CHRISTOPHER S. JENKINS
President/CEO
Norwood Development Group



JEFFREY A. FINN
Senior Vice President
Norwood Development Group





May 10, 2024

Camille Calimlim Touton
Commissioner
US Bureau of Reclamation
1849 C Street NW
Washington DC 20240-0001

Dear Commissioner Touton,

I am writing on behalf of Nunn Construction to express support of the WaterSMART Water Strategy Grant (WSG) application, prepared by Pikes Peak Waterways, for the COS Creek Plan stream restoration project.

Nunn Construction is a community builder, and we understand the importance of the Monument Creek Corridor. The COS Creek Plan is an inspiring document, and we know the implementation of the plan will benefit Colorado Springs for generations to come.

The health and vitality of urban streams are essential to both human and wildlife communities. Monument Creek flows through the heart of Colorado Springs and will be the centerpiece of a vibrant greenway. The reach has been significantly altered from its historic condition due to urban development along its length.

Restoration and enhancement of Monument Creek can lead to:

- Restoration of the creek's environmental qualities, aquatic ecosystems, and riverine function;
- Promotion of economic vitality in economically disadvantaged neighborhoods;
- Incentivizing private sector investments;
- Expansion of recreational opportunities; and
- Creating a strong sense of place for the Colorado Springs community.

Pikes Peak Waterways, working in a formal collaboration with the City of Colorado Springs Stormwater Enterprise and Colorado Springs Utilities, is leading the efforts to implement the vision of the COS Creek Plan. The Water Strategy Planning Document that will be created is a critical element and next step to implement the greater vision of the COS Creek Plan, tie into restoration projects upstream and downstream of the area of interest, and provide a framework for the design and construction of improvements for the future including mitigation strategies for project challenges. The Water Strategy Planning Document will be a valuable tool to enhance community engagement and excitement.

Nunn Construction respectfully requests that the Bureau of Reclamation consider the importance of this Water Strategy Planning Document for the successful revitalization of the Monument Creek corridor and urges your favorable consideration of the application.

Sincerely,

A handwritten signature in blue ink, appearing to read "Tyson Nunn", is written over a blue circular stamp or seal.

Tyson Nunn

925 Elkton Drive
Colorado Springs, CO 80907
719-599-7710

nunnconstruction.com



COLORADO SPRINGS ADDRESS
102 S. Tejon, Ste 360
Colorado Springs, CO 80903
719-632-3236

PUEBLO ADDRESS
121 W. City Center Dr, Ste 200D
Pueblo, CO 81003
719-941-9909

MAILING ADDRESS
P.O. Box 1281
Colorado Springs, CO 80901

Camille Calimlim Touton
Commissioner
US Bureau of Reclamation
1849 C Street NW
Washington DC 20240-0001

Dear Commissioner Touton:

I am writing on behalf of Palmer Land Conservancy to express support of the WaterSMART Water Strategy Grant (WSG) application, prepared by Pikes Peak Waterways, for the COS Creek Plan stream restoration project.

Since 1977, Palmer Land Conservancy has been committed to meaningful, community-inspired land and water conservation efforts in the Pikes Peak region and throughout southern Colorado. We have conserved more than 140,000 acres of critical habitat, agricultural lands, scenic views, and parks and open spaces in partnership with government agencies, private landowners, and the public. We know well the value of Colorado Springs' waterways, and Fountain Creek in particular.

The health and vitality of urban streams are essential to both human and wildlife communities. Perennial streams in semi-arid areas, such as Monument Creek, have attracted settlement since prehistoric times. Monument Creek flows through the heart of Colorado Springs and will be the centerpiece of a vibrant greenway. The reach has been significantly altered from its historic condition due to urban development along its length. Restoration and enhancement of Monument Creek can lead to:

- Restoration of the creek's environmental qualities, aquatic ecosystems, and riverine function;
- Promotion of economic vitality in economically disadvantaged neighborhoods;
- Incentivizing private sector investments;
- Expansion of recreational opportunities; and
- Creating a strong sense of place for the Colorado Springs community.

Pikes Peak Waterways, working in a formal collaboration with the City of Colorado Springs Stormwater Enterprise and Colorado Springs Utilities, is leading the efforts to implement the vision of the COS Creek Plan. The Water Strategy Planning Document that will be created is a critical element and next step to implement the greater vision of the COS Creek Plan, tie into restoration projects upstream and downstream of the area of interest and provide a framework

for the design and construction of improvements for the future including mitigation strategies for project challenges. The Water Strategy Planning Document will be a valuable tool to enhance community engagement and excitement.

Palmer Land Conservancy respectfully requests that the Bureau of Reclamation consider the importance of this Water Strategy Planning Document for the successful revitalization of the Monument Creek corridor and urges your favorable consideration of the application.

Sincerely,

A handwritten signature in black ink, appearing to read "Rebecca Jewett". The signature is fluid and cursive, with the first name being more prominent than the last.

Rebecca Jewett
President and CEO



May 3, 2024

Camille Calimlim Touton
Commissioner
US Bureau of Reclamation
1849 C Street NW
Washington DC 20240-0001

Dear Commissioner Touton,

I am writing on behalf of Pikes Peak Real Estate Foundation (PPREF) to express support for the WaterSMART Water Strategy Grant (WSG) application, prepared by Pikes Peak Waterways, for the COS Creek Plan stream restoration project.

PPREF's role in our region is to ensure our community make thoughtful investment into community-serving assets for citizens of all incomes. The COS Creek Plan is a tremendous opportunity to enhance underserved populations in our city with better access to vibrant and healthy ecosystems, such as Monument Creek.

Perennial streams in semi-arid areas, such as Monument Creek, have attracted settlement since prehistoric times. Monument Creek flows through the heart of Colorado Springs and will be the centerpiece of a vibrant greenway. Restoration and enhancement of Monument Creek can lead to:

- Restoration of the creek's environmental qualities, aquatic ecosystems, and riverine function;
- Promotion of economic vitality in economically disadvantaged neighborhoods;
- Expansion of recreational opportunities; and
- Creating a strong sense of place for the Colorado Springs community.

Pikes Peak Waterways, working in a formal collaboration with the City of Colorado Springs Stormwater Enterprise and Colorado Springs Utilities, is leading the efforts to implement the vision of the COS Creek Plan. The Water Strategy Planning Document that will be created is a critical element and next step to implement the greater vision of the COS Creek Plan, tie into restoration projects upstream and downstream of the area of interest and provide a framework for the design and construction of improvements for the future including mitigation strategies for project challenges. The Water Strategy Planning Document will be a valuable tool to enhance community engagement and excitement.

The Pikes Peak Real Estate Foundation respectfully requests that the Bureau of Reclamation consider the importance of this Water Strategy Planning Document for the successful revitalization of the Monument Creek corridor and urges your favorable consideration of the application.

Sincerely,

A handwritten signature in blue ink, appearing to read "Samuel Clark", is written over a light blue horizontal line.

Samuel Clark
Executive Director, Pikes Peak Real Estate Foundation



May 17, 2024

Camille Calimlim Touton
Commissioner
US Bureau of Reclamation
1849 C Street NW
Washington DC 20240-0001

Dear Commissioner Touton,

I am writing on behalf of Pikes Peak Regional Building Department (PPRBD) to express support of the WaterSMART Water Strategy Grant (WSG) application, prepared by Pikes Peak waterways, for the COS Creek Plan stream restoration project.

The health and vitality of urban streams are essential to both human and wildlife communities. Perennial streams in semi-arid areas, such as Monument Creek, have attracted settlement since prehistoric times. Monument Creek flows through the heart of Colorado Springs and will be the centerpiece of a vibrant greenway. The reach has been significantly altered from its historic condition due to urban development along its length. Restoration and enhancement of Monument Creek can lead to:

- Restoration of the creek's environmental qualities, aquatic ecosystems, and riverine function;
- Promotion of economic vitality in economically disadvantaged neighborhoods;
- Incentivizing private sector investments;
- Expansion of recreational opportunities; and
- Creating a strong sense of place for the Colorado Springs community.

Pikes Peak Waterways, working in a formal collaboration with the City of Colorado Springs Stormwater Enterprise and Colorado Springs Utilities, is leading the efforts to implement the vision of the COS Creek Plan. The Water Strategy Planning Document that will be created is a critical element and next step to implement the greater vision of the COS Creek Plan, tie into restoration projects upstream and downstream of the area of interest, and provide a framework for the design and construction of improvements for the future including mitigation strategies for project challenges. The Water Strategy Planning Document will be a valuable tool to enhance community engagement and excitement. The PPRBD respectfully requests that the Bureau of Reclamation consider the importance of this Water Strategy Planning Document for the successful revitalization of the Monument Creek corridor and urges your favorable consideration of the application.

Sincerely,

Keith Curtis, PE, CFM, LEED AP
Floodplain Administrator



The Nature Conservancy in Colorado
2424 Spruce Street
Boulder, CO 80302

tel (303) 444-2950
fax (303) 444-2985

nature.org/colorado

May 17, 2024

Ms. Camille Calimlim Touton
Commissioner
US Bureau of Reclamation
1849 C Street NW
Washington DC 20240-0001

Dear Commissioner Touton,

On behalf of The Nature Conservancy (TNC) in Colorado, I am writing to express my enthusiastic support for the Pikes Peak Waterways' application for a WaterSMART Strategy Grant (WSG) to fund stream restoration through the Colorado Springs (COS) Creek Plan.

For decades, TNC has worked closely with community partners in the Colorado Springs area to protect grasslands and forests vital to the region's agricultural heritage, biodiversity, and community resilience. TNC recognizes Monument Creek as central to the ecology, economy, culture, and health of the region. However, the reach that flows through the city has been significantly degraded due to urban development. Restoring Monument Creek will support wildlife habitat, aquatic ecosystems, and riverine functions such as flood control, water storage, and improved water quality. Restoration will also benefit local communities—including disadvantaged neighborhoods—with improved economic and recreational opportunities.

As we understand from our peers at Pikes Peak Waterways, a WSG will support the development of a Water Strategy Planning Document. The planning document is the next step to implement the COS Creek Plan, to connect upstream and downstream restoration projects, and to provide a framework for the design and construction of improvements, including mitigation strategies for project challenges. As an organization that also works to restore river ecosystems throughout the Colorado River basin, all of us at TNC understand that the planning phase is critical for a successful and effective river restoration project.

By investing in the Water Strategy Planning Document, you will help catalyze the long-term vision for the creek as articulated in the COS Creek Plan, which incorporates the values and goals of numerous organizations, neighborhoods, and local government representatives.

On behalf of TNC, I respectfully request that the Bureau of Reclamation consider the importance of this project, and I urge you to favorably consider the application.

Sincerely,

A handwritten signature in black ink, appearing to read "Carlos Fernández".

Carlos Fernández
Colorado State Director



May 9, 2024

Camille Calimlim Touton
Commissioner
US Bureau of Reclamation
1849 C Street NW
Washington DC 20240-0001

Dear Commissioner Touton,

I am writing on behalf of the Trails and Open Space Coalition to express support of the WaterSMART Water Strategy Grant (WSG) application, prepared by Pikes Peak Waterways, for the COS Creek Plan stream restoration project.

Our organizational focus is to protect more acres of open space, create and connect more miles of trail and improve parks across our region. Our residents and visitors use and appreciate our public spaces. We are committed to being their eyes, ears and voice on projects like this one. The COS Creek Plan will greatly improve their recreation options and quality of life in our community.

The health and vitality of urban streams are essential to both human and wildlife communities. Perennial streams in semi-arid areas, such as Monument Creek, have attracted settlement since prehistoric times. Monument Creek flows through the heart of Colorado Springs and will be the centerpiece of a vibrant greenway. The reach has been significantly altered from its historic condition due to urban development along its length. Restoration and enhancement of Monument Creek can lead to:

- Restoration of the creek's environmental qualities, aquatic ecosystems, and riverine function;
- Promotion of economic vitality in economically disadvantaged neighborhoods;
- Incentivizing private sector investments;
- Expansion of recreational opportunities; and
- Creating a strong sense of place for the Colorado Springs community.

Pikes Peak Waterways, working in a formal collaboration with the City of Colorado Springs Stormwater Enterprise and Colorado Springs Utilities, is leading the efforts to implement the vision of the COS Creek Plan. The Water Strategy Planning Document that will be created is a critical element and next step to implement the greater vision of the COS Creek Plan, tie into restoration projects upstream and

downstream of the area of interest, and provide a framework for the design and construction of improvements for the future including mitigation strategies for project challenges. The Water Strategy Planning Document will be a valuable tool to enhance community engagement and excitement.

The Trails and Open Space Coalition respectfully requests that the Bureau of Reclamation consider the importance of this Water Strategy Planning Document for the successful revitalization of the Monument Creek corridor and urges your favorable consideration of the application.

Sincerely,

Susan Davies

Susan Davies, Executive Director

Trails and Open Space Coalition

Susan@trailsandopenspaces.org 719.633.6884

5/16/2024

Camille Calimlim Touton
Commissioner
US Bureau of Reclamation
1849 C Street NW
Washington DC 20240-0001

Dear Commissioner Touton,

I am writing on behalf of Pikes Peak Chapter of Trout Unlimited to express support of the WaterSMART Water Strategy Grant (WSG) application, prepared by Pikes Peak Waterways, for the COS Creek Plan stream restoration project.

The health and vitality of urban streams are essential to both human and wildlife communities. Perennial streams in semi-arid areas, such as Monument Creek, have attracted settlement since prehistoric times. Monument Creek flows through the heart of Colorado Springs and will be the centerpiece of a vibrant greenway. The reach has been significantly altered from its historic condition due to urban development along its length. Restoration and enhancement of Monument Creek can lead to:

- Restoration of the creek's environmental qualities, aquatic ecosystems, and riverine function;
- Promotion of economic vitality in economically disadvantaged neighborhoods;
- Incentivizing private sector investments;
- Expansion of recreational opportunities; and
- Creating a strong sense of place for the Colorado Springs community.

Pikes Peak Waterways, working in a formal collaboration with the City of Colorado Springs Stormwater Enterprise and Colorado Springs Utilities, is leading the efforts to implement the vision of the COS Creek Plan. The Water Strategy Planning Document that will be created is a critical element and next step to implement the greater vision of the COS Creek Plan, tie into restoration projects upstream and downstream of the area of interest, and provide a framework for the design and construction of improvements for the future including mitigation strategies for project challenges. The Water Strategy Planning Document will be a valuable tool to enhance community engagement and excitement.

The Pikes Peak Chapter of Trout Unlimited respectfully requests that the Bureau of Reclamation consider the importance of this Water Strategy Planning Document for the successful revitalization of the Monument Creek corridor and urges your favorable consideration of the application.

Sincerely,

David Burnham

VP of Programs, Pikes Peak Chapter of Trout Unlimited, ppctu.org

717-982-8880



University of Colorado
Colorado Springs

UCCS Development Corp.

Main Hall, Chancellor's Suite, 402G
1420 Austin Bluffs Parkway
Colorado Springs, CO 80918

May 20, 2024

Camille Calimlim Touton
Commissioner
US Bureau of Reclamation
1849 C Street NW
Washington DC 20240-0001

Dear Commissioner Touton,

I am writing on behalf of the University of Colorado Colorado Springs Development Corporation to express support of the WaterSMART Water Strategy Grant (WSG) application, prepared by Pikes Peak Waterways, for the COS Creek Plan stream restoration project.

As a 501(c)(3) organization dedicated to encouraging connections between the University and the Colorado Springs community, the UCCS Development Corporation supports the COS Creek Plan stream restoration project as a way to utilize the intellectual capital generated at our University, create jobs, and promote healthy growth in the geographic area just south and west of our Colorado Springs campus.

The health and vitality of urban streams are essential to both human and wildlife communities. Perennial streams in semi-arid areas, such as Monument Creek, have attracted settlement since prehistoric times. Monument Creek flows through the heart of Colorado Springs and will be the centerpiece of a vibrant greenway. The reach has been significantly altered from its historic condition due to urban development along its length. Restoration and enhancement of Monument Creek can lead to:

- Restoration of the creek's environmental qualities, aquatic ecosystems, and riverine function;
- Promotion of economic vitality in economically disadvantaged neighborhoods;
- Incentivizing private sector investments;
- Expansion of recreational opportunities; and
- Creating a strong sense of place for the Colorado Springs community.

Pikes Peak Waterways, working in a formal collaboration with the City of Colorado Springs Stormwater Enterprise and Colorado Springs Utilities, is leading the efforts to implement the vision of the COS Creek Plan. The Water Strategy Planning Document that will be created is a critical element and next step to implement the greater vision of the COS Creek Plan, tie into restoration projects upstream and downstream of the area of interest, and provide a framework for the design and construction of improvements for the future including mitigation strategies for project challenges. The Water Strategy Planning Document will be a valuable tool to enhance community engagement and excitement.

The UCCS Development Corporation respectfully requests that the Bureau of Reclamation consider the importance of this Water Strategy Planning Document for the successful revitalization of the Monument Creek corridor and urges your favorable consideration of the application.

Sincerely,

A handwritten signature in cursive script that reads "Wm C. Lueck".

William C. Lueck
Executive Director / Chief Operating Officer
UCCS Development Corporation



United States Department of the Interior

U. S. GEOLOGICAL SURVEY
Water Mission Area
Colorado Water Science Center
Box 25046 MS 415
Denver Federal Center
Denver, CO 80225

Camille Calimlim Touton
Commissioner
US Bureau of Reclamation
1849 C Street NW
Washington DC 20240-0001

May 21, 2024

Dear Commissioner Touton,

I am writing on behalf of the United States Geological Survey (USGS) to express our enthusiastic support of the Colorado Springs 2024 WaterSMART Planning and Project Design Grant application for the Fountain Creek Restoration Project.

Part of the mission of the USGS is to provide science to help America achieve sustainable management and conservation of biological/ecological resources in wild and urban spaces, and places in between. The ultimate objective of this grant funding will be in direct alignment with our mission.

The health and vitality of Fountain Creek is critical to all Southeastern Colorado. The WaterSMART funding is critical to providing funding to design water management systems for a highly degraded stretch of Fountain Creek. The subject reach is significantly altered from its historic condition due to urban development along its length: the reach is highly confined with no floodplain terracing, the natural habitat is deteriorated, and the majority of the natural wetlands are destroyed and have been replaced mostly by invasive species. The proposal will:

- Restoration of the creek's environmental qualities, aquatic ecosystems, and riverine function;
- Promotion of economic vitality in economically disadvantaged neighborhoods;
- Incentivizing private sector investments;
- Expansion of recreational opportunities; and
- Creating a strong sense of place for the Colorado Springs community.

Pikes Peak Waterways, working in a formal collaboration with the City of Colorado Springs Stormwater Enterprise and Colorado Springs Utilities, is leading the efforts to implement the vision of the COS Creek Plan. The Water Strategy Planning Document that will be created is a critical element and next step to implement the greater vision of the COS Creek Plan. The Water Strategy Planning Document will be a valuable tool to enhance community engagement and excitement.

The USGS respectfully requests that the Bureau of Reclamation consider the importance of these improvements and urges your favorable consideration of the application.

Sincerely,

Andy Klakulak
Supervisory Hydrologist- Colorado Water Science Center
Southeast Colorado Office - Pueblo, CO
928-388-8964

May 9, 2024

Camille Calimlim Touton
Commissioner
US Bureau of Reclamation
1849 C Street NW
Washington DC 20240-0001

Dear Commissioner Touton,

I am writing on behalf of Visit Colorado Springs (VCOS) to express support of the WaterSMART Water Strategy Grant (WSG) application, prepared by Pikes Peak Waterways, for the COS Creek Plan stream restoration project.

As a driver of tourism and the revenue it creates, VCOS sees this as an opportunity for both visitors and residents to enjoy the added recreational opportunities that the project will provide, not to mention the clean up and the beautification of the area. The revitalization of the Monument Creek corridor will pay dividends for generations to come both financially and aesthetically.

The health and vitality of urban streams are essential to both human and wildlife communities. Perennial streams in semi-arid areas, such as Monument Creek, have attracted settlement since prehistoric times. Monument Creek flows through the heart of Colorado Springs and will be the centerpiece of a vibrant greenway. The reach has been significantly altered from its historic condition due to urban development along its length. Restoration and enhancement of Monument Creek can lead to:

- Restoration of the creek's environmental qualities, aquatic ecosystems, and riverine function;
- Promotion of economic vitality in economically disadvantaged neighborhoods;
- Incentivizing private sector investments;
- Expansion of recreational opportunities; and
- Creating a strong sense of place for the Colorado Springs community.

Pikes Peak Waterways, working in a formal collaboration with the City of Colorado Springs Stormwater Enterprise and Colorado Springs Utilities, is leading the efforts to implement the vision of the COS Creek Plan. The Water Strategy Planning Document that will be created is a critical element and next step to implement the greater vision of the COS Creek Plan, tie into restoration projects upstream and downstream of the area of interest, and provide a framework for the design and construction of improvements for the future including mitigation strategies for project challenges. The Water Strategy Planning Document will be a valuable tool to enhance community engagement and excitement.

VCOS respectfully requests that the Bureau of Reclamation consider the importance of this Water Strategy Planning Document for the successful revitalization of the Monument Creek corridor and urges your favorable consideration of the application.

Sincerely,

A handwritten signature in black ink that reads "Doug Price". The signature is written in a cursive style with a large, sweeping initial "D".

Doug Price
President and CEO
VisitCOS
doug@visitcos.com



9757 NE Juanita Drive,
Suite 300
Kirkland, WA 98034
425-250-2968
gregc@weidner.com

May 10, 2024

Camille Calimlim Touton
Commissioner
US Bureau of Reclamation
1849 C Street NW
Washington DC 20240-0001

RE: Letter of Support – WaterSMART Water Strategy Grant

Dear Commissioner Touton,

I am writing on behalf of Weidner Apartment Homes to express support of the **WaterSMART Water Strategy Grant (WSG)** application, prepared by Pikes Peak Waterways, for the **COS Creek Plan stream restoration project**.

The COS Creek Plan is a comprehensive project focusing on the future of the Fountain Creek Watershed in Colorado Springs, with particular attention to the segments of Monument and Fountain creeks near Downtown where Weidner Apartment Homes is developing a mixed-use community. The study area has recently been expanded to include the confluence of Fountain Creek and Shooks Run Creek (critical to the completion of the Legacy Loop project) where Weidner also owns property. Improved waterways and green spaces will greatly enhance the city's appeal and livability, which can attract more residents, businesses, and tourists. Improvements to the Creekways will also increase property values and encourage development (like ours) in adjacent areas. Additionally, the project can create jobs during and after construction, boosting local employment.

The health and vitality of urban streams are essential to both human and wildlife communities. Perennial streams in semi-arid areas, such as Monument Creek, have attracted settlement since prehistoric times. Monument Creek flows through the heart of Colorado Springs and will be the

what MATTERS
to YOU,
MATTERS
to US.

centerpiece of a vibrant greenway. The reach has been significantly altered from its historic condition due to urban development along its length. Restoration and enhancement of Monument Creek can lead to:

- Restoration of the creek's environmental qualities, aquatic ecosystems, and riverine function;
- Promotion of economic vitality in economically disadvantaged neighborhoods;
- Incentivizing private sector investments;
- Expansion of recreational opportunities; and
- Creating a strong sense of place for the Colorado Springs community.

Pikes Peak Waterways, working in a formal collaboration with the City of Colorado Springs Stormwater Enterprise and Colorado Springs Utilities, is leading the efforts to implement the vision of the COS Creek Plan. The Water Strategy Planning Document that will be created is a critical element and next step to implement the greater vision of the COS Creek Plan, tie into restoration projects upstream and downstream of the area of interest, and provide a framework for the design and construction of improvements for the future including mitigation strategies for project challenges. The Water Strategy Planning Document will be a valuable tool to enhance community engagement and excitement.

Weidner Apartment Homes respectfully requests that the Bureau of Reclamation consider the importance of this Water Strategy Planning Document for the successful revitalization of the Monument Creek corridor and urges your favorable consideration of the application.

Sincerely,

GK Cerbana

Gregory K. Cerbana
VP – Public Relations and Govt Affairs



MONUMENT CREEK WATER STRATEGY DOCUMENT PROJECT BUDGET NARRATIVE

Notice of Funding Opportunity No. R23AS00109

***WaterSMART Planning and Project Design Grants
For Fiscal Year 2023 and 2024***

APPLICANT

*Fountain Creek Watershed, Inc. dba
Pikes Peak Waterways
13 S. Tejon Street, Suite 200
Colorado Springs, CO 80903*

PROJECT MANAGER

*Chris Lieber
Fountain Creek Watershed, Inc. dba
Pikes Peak Waterways
13 S. Tejon Street, Suite 200
Colorado Springs, CO 80903
clieber@nescolorado.com | 719-440-5102*



Budget Narrative

Fountain Creek Watershed, Inc. dba Pikes Peak Waterways (PPW) will engage with a qualified professional Consultant to perform the scope of services described in the Technical Proposal.

Task A – Project Management and Administration

Task A includes project management activities for both PPW and the Consultant. Project management activities include project setup, invoicing, and miscellaneous tasks not included elsewhere. PPW's Contract Administrator will administer the grant award and manage the professional consultant. Effort for this task will be distributed among each of the Project Components.

Task B – Project Coordination in Support of Project Component 1

Task B includes efforts for project meetings, public outreach activities, and partnership building. Public outreach activities include meetings and workshops with stakeholders, community groups, and other interested organizations. This task also includes the development of outreach materials.

Task C – Data Collection in Support of Project Component 2

Task C includes data collection tasks in support of Project Component 2. This includes obtaining and review of background materials, coordination with other City and County departments to identify potential conflicts that may impact projects developed for the Water Strategy Document, and an assessment of the Monument Creek corridor.

Task D – Modeling in Support of Project Component 2

Task D includes modeling tasks in support of Project Component 2. This includes reviewing prior modeling and preparing an updated hydraulic model to correct identified modeling issues. Task D also includes using the hydraulic model as the basis for geomorphic modeling and sediment transport analysis. A memorandum documenting the modeling results will be prepared as part of Task D.

Task E – Water Quality Analysis in Support of Project Component 2

Task E includes analyses in support of Project Component 2. This includes review of previously prepared and ongoing water quality analyses. A holistic ecosystem water quality impact analysis will be prepared to identify critical habitat risks and degraded wetlands and riparian degradation. Water quality improvements opportunities will be identified. A memorandum documenting the analysis effort will be prepared as part of Task E.

Task F – Evaluation of Floodplain in Support of Project Component 2

Task F includes identification of areas for expansion of floodplain benching for increased creek capacity using hydraulic models prepared as a part of Task D. benefits to aquatic and riparian species will be identified. Conceptual improvements to reduce flooding impacts on aquatic

species will be developed in this task. A memorandum documenting the analysis effort will be prepared as part of Task F.

Task G – Water Strategy Planning Document, Project Component 3

Task G includes the preparation of the Water Strategy Planning Document. This document is the culmination of all the individual analyses and efforts described in the preceding tasks. Using the materials developed in the previous tasks, improvement concepts to restore and enhance the natural functions of Monument Creek. A workshop to develop prioritization scoring criteria will be conducted in Task G. An implementation and permitting strategy will be developed to discuss other City, State, or Federal permits that may become required if a specific improvement concept or project becomes implemented. The Water Strategy Planning Document, detailing the study effort, conceptual improvements, and a prioritization matrix will be prepared.

