



Palm Springs Crest and West Palm Springs Village Intertie Project – Planning Phase

**WaterSMART: Planning and Project Design for FY 2024
No. R23AS00109**

Prepared For:

Bureau of Reclamation
Financial Assistance Support Section
Attn: Applied Science NOFO
P.O. Box 25007, MS 84-27133
Denver, CO 80225
SHA-DRO-FAFOA@usbr.gov
303-445-2906

Submitted By:

Brian Macy
General Manager
66575 2nd St,
Desert Hot Springs, CA 92240
bmacy@mswd.org
(760) 329-6448, Ext 146

May 23, 2024



Table of Contents

MANDATORY FEDERAL FORMS (separate submission)

SF-424 Application for Federal Assistance

SF-424A Budget Information

SF-424B Assurances

SF-LLL Disclosure of Lobbying Activities

SECTION 1: TECHNICAL PROPOSAL AND EVALUATION CRITERIA	1
<i>Executive Summary</i>	<i>1</i>
<i>Project Location</i>	<i>1</i>
<i>Project Description</i>	<i>3</i>
<i>Evaluation Criteria</i>	<i>4</i>
Evaluation Criterion A-Project Benefits (35 points).....	4
Evaluation Criterion B-Inclusion of Stakeholders, Stakeholder Support, and Previous Planning Efforts (25 points).....	9
Sub-Criterion B1: Task A- Water Supply Strategy Grants and Task C- Drought Contingency Planning.....	9
Evaluation Criterion C-Ability to Meet Program Requirements (20 points).....	13
Evaluation Criterion D-Presidential and DOI Priorities (15 points).....	15
Sub-Criterion D1: Climate Change	15
Sub-Criterion D2: Disadvantaged or Underserved Communities	16
Sub-Criterion D3: Tribal Benefits.....	17
Evaluation Criterion E-Nexus to Reclamation (5 points)	17
SECTION 2: PROJECT BUDGET	19
SECTION 3: ENVIRONMENTAL AND CULTURAL RESOURCES AND COMPLIANCE	20
SECTION 4: REQUIRED PERMITS OR APPROVALS	22
SECTION 5: OVERLAP OR DUPLICATION OF EFFORTS STATEMENT	23
SECTION 6: CONFLICT OF INTEREST DISCLOSURE	24
SECTION 7: UNIFORM AUDIT REPORTING STATEMENT	25
SECTION 8: LETTERS OF SUPPORT	26
SECTION 9: LETTERS OF PARTNERSHIP (Category B Applicants)	27
SECTION 10: OFFICIAL RESOLUTION	28
SECTION 11: LETTERS OF COMMITMENT	31
Appendices	32



Appendix A: Letters of Support33

Appendix B: Water Supply Outages Documentation39

Table of Figures

Figure 1. Project Location Map.....2

Figure 2. Drought Status for Whitewater River (HUC 18100201) (U.S. Drought Monitor)5

Figure 3. Project Location and MSWD DAC Map (CEJST)17

Table of Tables

Table 1. West Palm Village and Palm Springs Crest Communities Water Consumption and Population (2020).....9

Table 2. Proposed Project Schedule14

Table 3. Project Funding Sources.....20

Table 4. Project Budget.....21



SECTION 1: TECHNICAL PROPOSAL AND EVALUATION CRITERIA

Executive Summary

Date: May 21, 2024

City: Desert Hot Springs

County: Riverside

State: California

Task: A (Project Planning Grant)

Applicant Name: Mission Springs Water District

Project Length of Time: 14 months

Estimated Completion Date: June 2026

Located on a Federal Facility/Land: No

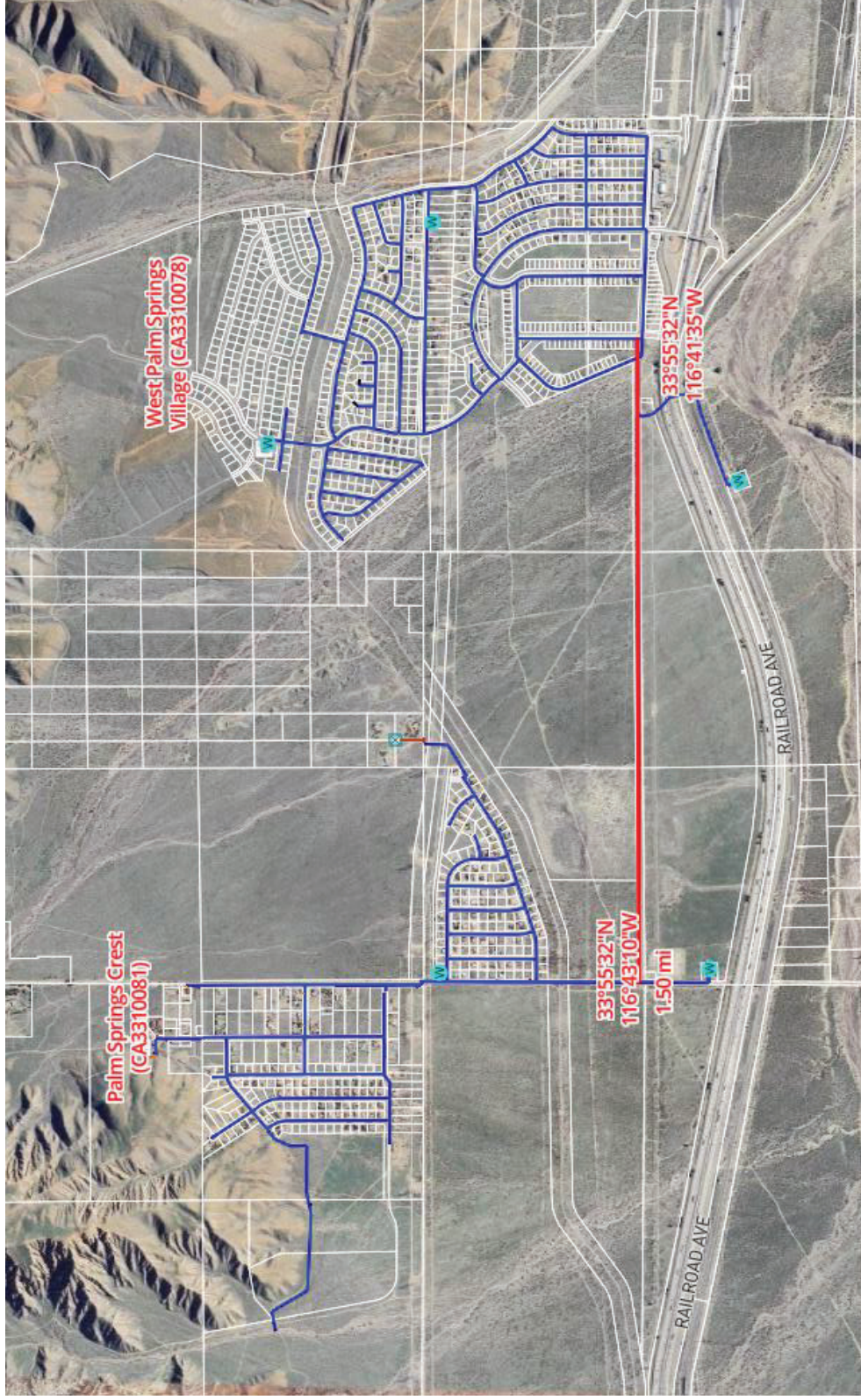
Category: A (Water District)

The Palm Springs Crest and West Palm Springs Village Intertie Project will conduct planning activities to develop a preliminary engineering report and water strategy document that will include outreach and collaboration, technical analyses and assessments of alternatives and project scoping and cost estimate activities. The planning effort will be detailed in a Water Strategy Document in accordance with the requirements of this grant program. Mission Springs Water District (MSWD) supplies potable water from wells to approximately 44,000 people in its 135 square-mile service area. Palm Springs Crest and West Palm Springs Village are two of the areas served by MSWD and have two independent water systems. This project will develop a feasible alternative to connect the water systems of the two areas to allow for increased water supply reliability to disadvantaged communities and more effective management of water resources.

Project Location

The Project is located in between the Palm Springs Crest and West Palm Springs Village communities, Riverside, County, CA. Specifically, the Project will be located as depicted in Figure 1 below. The project latitude is 33°55'32.6"N and longitude is 116°42'20.0"W.

Figure 1. Project Location Map



1" = 2000 ft	Site map	04/30/2024	
<p>This map may represent a visual display of related geographic information. Data provided here on is not guarantee of actual field conditions. To be sure of complete accuracy, please contact the responsible staff for most up-to-date information.</p>			



Project Description

MSWD provides water services to an area of approximately 135 square miles with three separate and distinct water supply and distribution systems with the largest of the three systems serving the community of Desert Hot Springs; the surrounding communities of West Garnet (located south of Interstate 10 and West of Indian Avenue); and North Palm Springs. The two smaller systems, Palm Springs Crest (PSC) System and West Palm Springs Village (WPSV) System, are located approximately five miles west of Desert Hot Springs. These two communities depend on groundwater extracted from wells from two separate subbasins and their water systems are completely physically separated. The aim of the project is to implement a physical interconnection between the Palm Springs Crest and West Palm Springs Village water systems in order provide mutual backup capability between the two water systems to mitigate the impact of well failures, groundwater contamination, subbasin drought conditions, and other system disruptions.

The funding request in this grant application is to conduct initial planning activities with the following scope of work:

1. Form a stakeholder work group composed of stakeholders such as neighboring water providers and wastewater agencies to guide and inform the planning process through regular meetings and correspondence.
 - a. Will consist of local utility agencies within the Coachella Valley Regional Water Management Group, including Coachella Valley Water District, Desert Water Agency, Valley Sanitary District, Coachella Water Authority, Indio Water Authority, and Mission Springs Water District.
2. Develop a community engagement plan to detail how to engage the public in a meaningful way and enable them to be an integral part of the planning process.
3. Conduct a comprehensive analysis of the problems and needs in the and the existing infrastructure and water systems of Palm Springs Crest (California Water System Number CA3310081) and West Palm Springs Village (California Water System Number CA3310078).
4. Identify optimal locations for pressure-reducing valves, altitude valves, and the booster station to ensure efficient water flow and system reliability between the PSC and WPSV systems.
5. Incorporate sustainability principles and best practices into the design, such as energy-efficient components and water conservation measures.
6. Devise a detailed cost estimate of upcoming phases of the project (final design and construction) and create funding strategies.
7. Develop a strategy for moving forward with project concepts.
8. Draft a Water Strategy Document containing all the components detailed in the guidelines for this grant program (funding opportunity number R23AS00109
9. Submit the draft Water Strategy Document to Reclamation for review.



10. Address stakeholder, public and Reclamation comments and create a final Water Strategy Document.

MSWD will retain a professional consultant to assist in conducting this planning effort through a compliant Request for Proposals. Proposers will be required to identify subconsultants as appropriate such as environmental and outreach specialists. The final Water Strategy Document will be used to progress the project to final design, permitting, environmental documentation and ultimately construction.

Evaluation Criteria

Evaluation Criterion A-Project Benefits (35 points)

Identify the threats to water supply, water quality, and river-based ecosystem or watershed health within the geographic area of the planning or design project. This could include threats from drought conditions, climate change vulnerabilities, changes to stream conditions or water quality, significant water shortages, or other threats to the environment or watershed health.

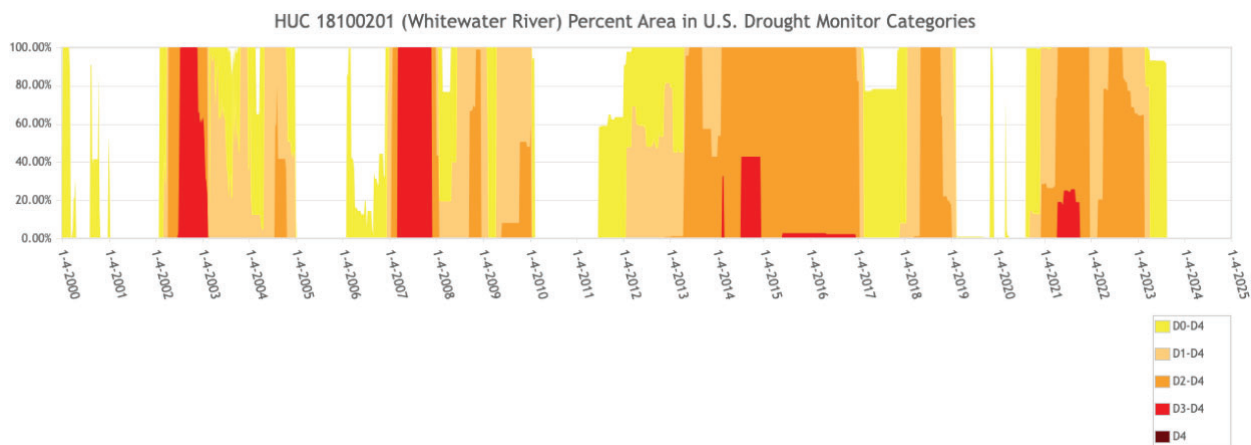
MSWD relies entirely on groundwater in order to provide water services to its customers. MSWD owns and operates 13 active groundwater wells which extract groundwater from the Mission Creek Subbasin, Indio Subbasin, San Gorgonio Pass Subbasin which are all within the Coachella Valley groundwater basin. The Mission Creek Subbasin supplies eight active wells, the Indio Subbasin supplies three active wells and the San Gorgonio Pass Subbasin supplies two active wells. The wells in the Palm Springs Crest community draw from the San Gorgonio Subbasin and the West Palm Springs Village wells draw from the Indio Subbasin. Therefore, the PSC and WPSV communities are entirely reliant upon the San Gorgonio Subbasin, and Indio Subbasin, respectively. The reliability of the water system supplies is critical for the two communities' health and safety as clean water is essential for drinking, cooking, hygiene and other uses. The current state of each water system reliant on separate, individual sources subjects the residents within each community to prolonged shortages and outages experienced by the wells within their respective communities. Since each community relies on water derived from a separate subbasin, MSWD has identified this Project as a drought resiliency project which will allow each system to receive water from the neighboring system depending on shortages or disruptions experienced within their community. Potential disruptions to the water services within each community can result from restrictions on pumping due to SGMA regulations, historic and future drought conditions perpetuated from climate change, and well outages.

One potential groundwater supply impact could be pumping restrictions due to Groundwater Sustainability Agency restrictions. The PSC community relies on water from the San Gorgonio Pass Subbasin which is managed by the San Gorgonio Pass Subbasin Groundwater Sustainability Agency. The WPSV community relies on water from the Indio Subbasin which is managed by the Indio Subbasin Groundwater Sustainability Agencies (GSAs). Both of these Subbasins have been

identified as Medium priority subbasins by [SGMA prioritization tool](#) meaning the inflow must be equal to or greater than the outflow of each Subbasin. If recharge supplies continue to dwindle as demand increases, pumping restrictions may be enacted which would impact the PSC or WPSV communities depending on the Subbasin that enacts restrictions.

Both the San Gorgonio Pass and Indio Subbasins are located within the HUC 18100201 (Whitewater River) and therefore is the most relevant HUC area for assessing drought conditions. According to the [U.S. Drought Monitor](#), the MSWD service area (lies entirely within the Whitewater River HUC) encompassed areas experiencing Extreme Drought (D3 status) as shown in Figure 2 at the peak of the most recent drought (summer 2022), prior to the 2022/23 and 2023/24 wet seasons. The most recent drought lasted two years (2021-2023) and was immediately followed but historic wet seasons. Climate change is now in full effect and frequent, severe droughts coupled with short duration wet periods are becoming more likely.

Figure 2. Drought Status for Whitewater River (HUC 18100201) (U.S. Drought Monitor)



Multiple research studies have concluded that the southwestern United States (where MSWD and this Project located) will be unavoidable ([Drought.gov, 2021](#)). The study published by Drought.gov states that the likelihood of 21-year mega drought events are 50% likely to occur through 2100 ([Drought.gov, 2021](#)). The evidence supporting the conclusions of these studies is mounting showing the southwestern United States. As depicted in Figure 2 above, 2012-2017 was a prolonged drought period, followed by a brief wet period in 2018 which provided temporary relief. Drought conditions returned again from 2019-2023 and was then followed by intense wet period from 2023-2024 which has brought California out of drought for the time being. Therefore, MSWD is pursuing this Project in order to be prepared for the next drought period expected in the coming years. Having access to groundwater from multiple Subbasins will bolster the drought resiliency for each of the PSC and WPSV community water systems.

In addition to groundwater use regulations and drought conditions that threaten water supply accessibility on a macro-scale, MSWD has experienced various water supply outages in each of

the PSC and WPSV communities resulting from various occurrences such as scheduled power outages to unscheduled outages due to vehicle collision with power lines, and other impacts. The supporting documentation detailing the various water supply outages in each of the communities is included in Appendix B. This project will allow water resources to be shared between these communities therefore bolstering resilience to unplanned water supply outages.

How do the threats identified in your response to the preceding bullet impact specific water uses or sectors in the geographic area of the planning or design project?

The Palm Springs Crest and the West Palm Springs Village communities are predominantly comprised of residential users with some commercial users. Clean water is an essential component for life and a reliable supply is critical to a functioning community and thriving economy. Shortages or complete disruptions to the water supply within these communities can have impacts to public health and safety in the following ways:

- Reduced quantity and quality of drinking water, which is the most basic element of a healthy body.
- Impacts to sanitation and hygiene.
- Reduced water usage for the irrigation of landscaping can result in higher dust and related particles, which may exacerbate respiratory conditions such as asthma.
- Reduced fire suppression capabilities.
- Reduced opportunities for recreational activities such as public swimming pools, especially impacting the health and social interactions of the youth.
- Commercial uses such as grocery stores that provide food for the residents of the community rely on water for their operations and disruptions and shortages may cause to shut down.
- Impacts to the commercial sector also impacts residents' livelihoods and the overall economic output.

All of these drought related impacts are supported by findings posted within the National Drought Mitigation Center which outlines the economic, social, and environmental impacts of drought ([NDMC, 2024](#)). From an economic perspective, drought can lead to water providers having to seek alternative sources of water which are more costly than typical supplies ([CNBC, 2021](#)). Although MSWD relies entirely on groundwater for its potable supplies, if groundwater supplies dwindle to unreliable levels, MSWD will have to seek alternative supplies which would likely include either groundwater or imported water exchanges with neighboring water agencies.

From an environmental perspective, drought and depleted groundwater sources can lead to a variety of issues such as lack of food and drinking water for wild animals, migration of wildlife, more wildfires, poor soil quality, and many other issues ([NDMC, 2024](#)). This is also supported by [drought.gov](#) which states that drought can cause a slew of environmental consequences ([drought.gov](#)). MSWD and the Project area has a wide area of natural lands which supports a



diverse ecosystem, therefore this Project will have a positive impact by allowing the PSC and WPSV communities to share its water resources if one of the subbasins is in overdraft condition.

Finally, from a social perspective, drought can cause a variety of social consequences. Specifically, drought can cause anxiety or depression about economic losses caused by drought, health problems due to poor water quality, health problems related to dust, threats to public safety due to increased wildfire potential, and other social issues ([NDMC, 2024](#)). This Project will mitigate the social impacts of drought on the PSC and WPSV communities by creating a shared water supply through the Project.

How will the planning or design project help address the threats to water supplies and water uses identified in your response to the preceding bullets? Your response should include:

The project will provide the required planning needed to implement a physical interconnection between the PSC and WPSV water systems in order provide mutual backup capability between the two water systems to mitigate the impact of well failures, groundwater contamination or other system disruptions. MSWD currently relies on locally produced clean, reliable and sustainable groundwater for all of its potable water needs. However, its two smaller water systems in these two communities are completely separate from any other water system or each other, which makes them extremely vulnerable to any mechanical failures, drought impacts the underlying subbasins, or groundwater contamination. These events may force a shutdown of the wells in one of the systems. If this project is not implemented, connecting these two water systems to an imported water source would be required. Not only is this an expensive alternative, but it would also add to the strain on the already overstretched state water resources coming from the State Water Project and Colorado River.

Research, as well as droughts over the past 15 years, clearly show that prolonged drought periods coupled with shorter and more intense wet periods will be more prevalent in the future as climate change intensifies. The last severe droughts to affect California occurred during 2012-2017 and 2020-2023, with 2021-2022 having extraordinarily dry conditions. Although heavy snow and rainfall 2022/23 and 2023/24 significantly improved drought conditions for the State, in the beginning of the 2023 Water Year (September 2022), Whitewater River watershed (MSWD location) was experiencing Category D2 Severe Drought as per the U.S. Drought Monitor up until January of 2023 and Category D1 Abnormally Dry until November 2023. Although MSWD's service area is not currently in severe drought, given the historical vulnerability to intense droughts for this region, as shown in Figure 2 above, it is vital for MSWD to manage and increase its local water supplies to increase drought resiliency.

Therefore, forcing a connection of the Palm Springs Crest and West Palm Springs Village water systems to an external source would only exacerbate California's water problem. The implementation of the project will allow MSWD to continue to use a local and sustainable water source and not add pressure to the California water resources. Therefore, the project will



optimize water use and ensure water supplies are available in perpetuity, which provides MSWD's supply system with significant resiliency and reliability in the face of climate change, droughts, system failures and other issues.

In summary the project is expected to result in the following benefits:

1. Provide mutual backup capability between Palm Springs Crest and West Palm Springs Village water systems to mitigate the impact of well failures, groundwater contamination or other system disruptions. This increase water supply reliability and resiliency to resource to system issues.
2. Give MSWD more operational flexibility to more effectively manage the water supplies in the two communities. The interconnection of the two systems gives the agency more flexibility in decision making in how to distribute the water.
3. Improve water access and service reliability for the small, disadvantaged community served by the Palm Springs Crest and West Palm Springs Village water systems.
4. Address disparities in water infrastructure and service quality experienced by vulnerable populations.
5. Promote equity and social justice by ensuring equitable access to essential water resources for all residents, regardless of socio-economic status.

If the planning or design effort for the purpose of providing domestic water supplies to a Tribe, insular area, or disadvantaged community(ies) that do not have reliable access to water supplies?

The communities of Palm Springs Crest and West Palm Springs Village are small, disadvantaged communities located in the north part of Riverside County. West Palm Springs Village is home to a population of approximately 500 residents while Palm Springs Crest has approximately 385 residents. The two communities exclusively rely on groundwater for their potable water provided by MSWD. Both of the communities are located within CT 06065044521 which is designated as a disadvantaged community as per the Climate and Economic Justice Screening Tool (CEJST). The percentile scores that caused this CT to be designated as a DAC include low income (95th percentile), energy cost (96th percentile), and transportation barriers (91st percentile). Figure 3 in the Sub-Criterion D2 section shows the DAC CTs within MSWD's service area, the Project location, and PSC and WPSV communities.

Each of the PSC and WPSV communities have incurred water supply outages due to inoperability of the local wells or issues with the groundwater supplies which caused water supply interruptions. These interruptions occurred due to scheduled power outages, unscheduled power outages due to vehicle collision with critical power lines, well malfunctions, and other impacts. The supporting documentation detailing the various water supply outages in each of the communities is included in Appendix B. This project will allow water resources to be



shared between these communities therefore bolstering resilience to unplanned water supply outages.

Interruptions in the water supply can have detrimental impacts to these two communities as the residents rely on essential groundwater resources for drinking, cooking, personal hygiene, commerce and recreational uses. Without interconnecting the two communities’ water systems for mutual back up, MSWD does not have viable options for providing water if issues arise in one of the communities. However, upon its implementation, the project will allow MSWD to keep supplying water to an impacted community using the system of the unimpacted community.

The amount of annual water consumption in each of the communities is summarized below based on 2020 figures.

Table 1. West Palm Village and Palm Springs Crest Communities Water Consumption and Population (2020)

Community	Water Consumption (Acre-Feet)	Population
West Palm Springs Village	88	500
Palm Springs Crest	77	385

Does the planning or design effort involve the improvement of nature-based features? If so, please describe.

The project does not involve the improvement of nature-based features.

Is the Project for the purpose of meeting existing environmental mitigation or compliance obligations under Federal or State law?

The project is not for the purpose of meeting existing environmental mitigation or compliance obligations under Federal or State law.

Evaluation Criterion B-Inclusion of Stakeholders, Stakeholder Support, and Previous Planning Efforts (25 points)

Sub-Criterion B1: Task A- Water Supply Strategy Grants and Task C- Drought Contingency Planning.

Will the project help meet the water supply needs of a large geographic area, region, or watershed? If the project will not address the water supply needs of a large geographic area, why is the area significant and appropriate for the proposed planning activity?

Yes. The Project will interconnect the water systems of two disadvantaged communities of Palm Springs Crest and West Palm Springs Village. These two communities are disadvantaged (as per CEJST Tool) and rely entirely on groundwater for their potable water needs. The two



water systems are not connected to outside water sources or to each other making them highly susceptible to water supply disruptions. Therefore, in the case of a disruption to the water supply in one of the communities, there are not viable alternatives to providing potable water and the impacts could be detrimental to the residents of these disadvantaged communities. The project aims to interconnect the water systems of the two communities as a way to provides a means of mutual back up in case of outages.

If the project is supported by an existing water planning effort, please describe that effort. Planning efforts may include, but are not limited to, water management plans, water conservation plans, system optimization reviews, drought plans, watershed restoration plans, integrated regional water management plans, or other types of plans. Does the referenced plan identify the project as a potential water management action? If identified in the plan, how is the project prioritized in the plan?

The funding request in this grant application is for an initial planning effort to conduct engineering analyses, engage stakeholders and the community, develop alternatives and devise a water management strategy to operate the project once implemented. Therefore, the project is not yet identified explicitly in an existing planning document. However, this Project does address planning goals on the statewide, regional, and local level as per the [California Water Supply Plan 2023](#) Update, [San Gorgonio Subbasin](#) Groundwater Sustainability Plan and [Indio Subbasin](#) SGMA Alternative Plan, and the Mission Springs Water District 2020 Urban Water Management Plan (Chapter 8 of the [2020 Coachella Valley Regional Urban Water Management Plan](#)).

The California Department of Water Resources (DWR) updates a its CWP every five years and provides DWR and local water suppliers a strategic plan to manage and develop water resources for current and future generations in an equitable and sustainable fashion. The objectives and methods to achieve this overarching goal are contained in Chapter 8 titled “Roadmap to Resilience” which provides objectives, recommendations, and actions that water providers can take to bolster water supply resiliency. *Recommendation 2.2 (under Objective 2) Adapt and Expand Existing Systems for Climate Change, Action 2.2.1 Maximize Operation of Systems for Changing Climate* provides actions that are needed from local water suppliers to optimize use of limited water supplies. The Project directly contributes to this goal of operation of systems for changing climate by connecting these separate water systems to use each other’s water supplies as back-up when disruptions occur.

From a regional perspective, the San Gorgonio Pass Subbasin Groundwater Sustainability Plan and the Indio Subbasin Groundwater Sustainability Plan provide goals and objectives to achieve groundwater sustainability within each of the subbasins. Section 6 of the San Gorgonio Pass Subbasin GSP identifies specific projects that should be implemented to achieve groundwater sustainability. This Project will indirectly address Management Action 5: Groundwater Pumping Allocation by allowing each community to rely on groundwater wells from the other Subbasin if pumping allocations are reduced within the San Gorgonio Pass Subbasin. Similarly, the Indio



Subbasin SGMA Alternative Plan provides an analysis of methods to achieve groundwater sustainability within the Indio Subbasin. Section 11 provides the Project and Management Actions that can be undertaken to achieve groundwater sustainability. This Project will address the Source Substitution and Replenishment category in Section 11.2 by creating a new water supply for each of the PSC and WPSV communities by creating back-up supply capabilities.

Finally, from a local perspective, the MSWD UWMP (Chapter 8 of the 2020 CV UWMP) identifies strategies to combat drought and water shortages. The Water Shortage Contingency Plan (WSCP) identifies strategies that can be used to combat drought of which water supply diversity is identified as a strategy to bolster drought resiliency. Since this Project will create emergency back-up for each of the PSC and WPSV communities, this Project is also supported by the locally developed UWMP and WSCP.

If not identified in the plan ,does the proposed project implement a goal or need identified in the plan?

Although this project is not explicitly mentioned in the above stated plans, this Project will address a variety of goals directly and indirectly as set forth in those plans. MSWD regularly collaborates with five other water agencies within the Coachella Valley region on its planning efforts. Therefore, the agencies jointly completed a Regional Urban Water Management Plan (RUWMP) in 2020. The project meets the overarching RUWMP goal of effectively managing the precious water resource to ensure supply reliability and to eliminate or minimize disruptions to service.

Was the referenced plan developed or updated using a collaborative process with input from multiple and diverse stakeholders?

Yes, the statewide CWP, San Gorgonio Pass Subbasin GSP, Indio Subbasin Alternative Plan, and the RUWMP were developed in a collaborative process (mentioned in the introduction of each document). The CWP is a statewide document that received input from stakeholders from individual water users to large regional water suppliers. The development of the San Gorgonio Pass Subbasin GSP, Indio Subbasin Alternative Plan, and the Coachella Valley RUWMP involved the following agencies:

1. Coachella Valley Water District
2. Coachella Water Authority
3. Desert Water Agency
4. Indio Water Authority
5. Mission Springs Water District
6. Myoma Dunes Mutual Water Company

These agencies worked closely together on developing the RUWMP, as well as other planning efforts related to water resources and their efficient use in the Coachella Valley. The development of the RUWMP also engaged other stakeholders such as Valley Sanitary District,



Agua Caliente Water Authority, City of Palm Springs, Coachella Valley Regional Water Management Group, Indio Subbasin Groundwater Sustainability Agencies and Mission Creek Subbasin Management Committee.

In addition, the agencies held two public workshops to present information about the RUWMP and gather input from stakeholders. These workshops were held in December 2020 and March 2021. Due to restrictions on in-person gatherings as a result of the COVID-19 Pandemic, the meetings were held virtually using an online collaboration platform. The agencies also maintained an online social collaboration site during December 2020 and January 2021 where participants could provide comments and input on the plan following the first public workshop. During the second workshop in March 2021, breakout groups were used to facilitate public comments on key elements of the plan. The concerns and comments received were used to guide the development of the final RUWMP.

If the referenced plan was not developed collaboratively, please explain why, for e.g., the planning effort was focused on a very small area or concerns internal to the applicant.

Not applicable.

Identify stakeholders in the planning area who have committed to be involved in the planning process.

Describe what sector(s) the participating stakeholders represent and how they will engage in this effort, e.g., will they be part of the planning committee, contribute funding or in-kind services, or otherwise engage in the planning process?

Although the project involves two small areas within MSWD's service area and the scope of work is local in nature and does not impact the overall groundwater resource, MSWD communicated with the agencies that utilize water from the San Gorgonio Subbasin and the Indio subbasin to be involved in the planning process (Palm Springs Crest draws from the San Gorgonio Subbasin and West Palm Springs Village draw from the Indio Subbasin). MSWD plans on forming a technical working group to meet regularly during the planning effort to guide and inform the planning process.

Provide documentation of the commitment by stakeholders to participate in the planning process. This could include letters from stakeholders committing to be involved in the planning process, such letters should explain what their specific interest is and how they plan to participate. Describe stakeholders in the planning area who have expressed their support for the planning process, whether or not they have committed to participate. Supporting documentation for this sub-criterion could include letters of support from stakeholders or a description of feedback from interested stakeholders.

MSWD has received five (5) letters of support from various stakeholder representatives that have an interest in MSWD's ability to provide sustainable, reliable, and clean water supplies.



Please refer to Appendix A for the letters of support received for this Project. MSWD has received letters of support from the following:

- California State Assemblymember Greg Wallis (47th District)
- Coachella Valley Regional Water Management Group
- United States Congressman Raul Ruiz (CA-25)
- County of Riverside Supervisor Manuel Perez (Fourth District)
- City of Desert Hot Springs Mayor Scott Matas

For tribal strategies or plans that will be developed collaboratively with multiple tribal interests, but do not include collaboration with external entities, please provide explanation as to why collaboration with entities external to the Tribe will not occur in the development of the strategy or plan.

MSWD will also be seeking input from the neighboring Morongo Band of Mission Indians and Agua Caliente Band of Cahuilla Indians during the stakeholder engagement process of this Project.

Describe what efforts the applicant will undertake to ensure participation by a diverse array of stakeholders in the development of a plan (or plan update).

As mentioned above, MSWD will engage stakeholder water agencies in the planning process in a meaningful way to ensure all input is taken into account to result in a successful planning document that is feasible and implantable. In addition, MSWD will develop a robust community engagement plan to give an open opportunity for the residents to be part of the process. Some of the elements of the community engagement plan will include:

1. A project factsheet, which includes design specifics, the need for the project, and timeline for construction.
2. A webpage on the MSWD website with regular project updates.
3. The District will also engage customers through posts on its various social media platforms.

Is there opposition to the proposed planning effort? If so, describe the opposition and explain how it will be addressed. Opposition will not necessarily result in fewer points.

MSWD is not aware of any opposition to the project.

Evaluation Criterion C-Ability to Meet Program Requirements (20 points)

Describe how the project will address the program specific requirements described in the appropriate program-specific appendix.



As detailed in the Project Description section earlier in this grant application, the project’s scope of work meets the requirements for Water Strategy Grants (Task A) as outlined in Appendix 1 of the grant program NOFO.

Describe the approach that will be undertaken to meet the applicable program components and requirements. Include a preliminary project schedule that shows the stages and duration of the proposed work including major tasks, milestones, and dates. For each task and milestone, indicate who will have the primary responsibility for completion. Proposals that provide a detailed project schedule broken down by tasks and subtasks with identified milestones will be prioritized.

The below table outlines the proposed project schedule.

Table 2. Proposed Project Schedule

Task	Start	End
Utility Research	4/15/2025	6/14/2025
Alignment Study	6/15/2025	9/13/2025
Environmental Assessment	6/15/2025	12/12/2025
Waterline Design	9/13/2025	6/10/2026
Booster Station Design	9/13/2025	6/10/2026

Proposals with a budget and budget narrative that provide a reasonable explanation of project costs will be prioritized

Please see Section 2 of this application for a more detailed budget and budget narrative.

If prior planning work will be relied on to meet any of the required program components, please explain and describe the work that will be relied on. For example, if you are applying for a Drought Contingency Plan and already have a water shortage allocation based on drought stages, please describe this and how it will be incorporated into the Drought Contingency Plan.

Not applicable.

Describe the availability and quality of existing data and models applicable to the proposed plan or design.

The 2020 RUWMP conducted modeling to project future water demands for the MSWD service area. In addition, Groundwater Sustainability Plans for the San Gorgonio and Indio Subbasins developed groundwater flow models. These models are ready to use, and build upon if needed, for the planning effort in this project.

MSWD also performs annual water quality testing and reporting of the groundwater in its wells.



Identify staff with appropriate technical expertise and describe their qualifications. Describe any plans to request additional technical assistance from Reclamation or by contract.

The below personnel are key MSWD staff that will be responsible for the management and implementation of the project. MSWD does not plan to request technical assistance from Reclamation. However, MSWD will utilize a professional consultant and subconsultant to assist with the completion of the project.

Key Personnel Names/Titles:

- Brian Macy, General Manager
- Marion Champion, Assistant General Manager
- Danny Friend, Director of Operations
- Eric Weck, Engineering Manager
- April Scott, Programs & Public Affairs Specialist
- Amanda Lucas, Contracts Analyst
- William Whitten, Business Analyst
- Rita Huber, Accountant
- Rachel Pust, Accounting Manager

Describe any new policies or administrative actions required to implement the plan or project being designed.

There are no new policies or administrative actions required to implement the project. MSWD has extensive experience in planning, designing, constructing, operating and maintaining projects such as this one.

Evaluation Criterion D-Presidential and DOI Priorities (15 points)

Sub-Criterion D1: Climate Change

Combating the Climate Crisis: E.O. 14008: Tackling the Climate Crisis at Home and Abroad, focuses on increasing resilience to climate change and supporting climate- resilient development. For additional information on the impacts of climate change throughout the western United States, see: www.usbr.gov/climate/secure/docs/2021secure/2021SECUREReport.pdf. Please describe how the project will address climate change, including the following:

Please provide specific details and examples on how the project will address the impacts of climate change and help combat the climate crisis.

The project will provide the required planning needed in order to implement a physical interconnection between the Palm Springs Crest and West Palm Springs Village water systems in order provide mutual backup capability between the two water systems to mitigate the impact of well failures, groundwater contamination or other system disruptions. MSWD currently relies on locally produced clean, reliable and sustainable groundwater for all of its potable water needs. However, its two smaller water systems in these two communities are



completely separate from any other water system, which makes them extremely vulnerable to any mechanical failures or groundwater contamination. These events may force a shutdown of the wells in one of the systems. If this project is not implemented, connecting these two water systems to an imported water source would be required. Not only is this an expensive alternative, but it would also add to the strain on the already overstretched state water resources coming from the SWP and Colorado River.

Research, as well as droughts over the past 15 years, clearly show that prolonged drought periods coupled with shorter and more intense wet periods will be more prevalent in the future as climate change intensifies. This only exacerbates California's water problem. The implementation of the project will allow MSWD to continue to use a local and sustainable water source and not add pressure to the California water resources. Therefore, the project will optimize water use and ensure water supplies are available in perpetuity, which provides MSWD's supply system with significant drought resiliency and reliability in the face of system failures or other issues.

Does this proposed project strengthen water supply sustainability to increase resilience to climate change? Does the proposed project contribute to climate change resiliency in other ways not described above?

Please see response in bullet above.

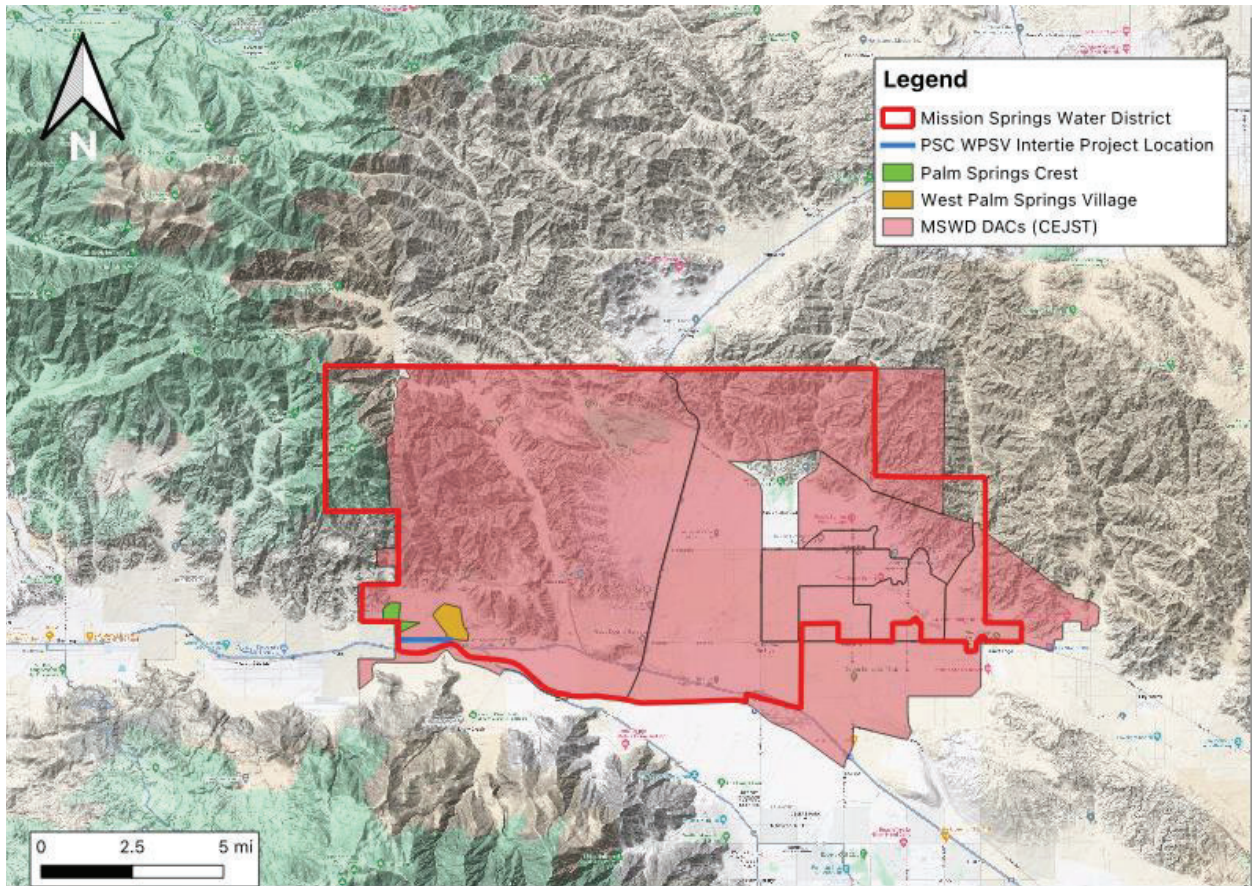
Sub-Criterion D2: Disadvantaged or Underserved Communities

E.O. 14008 and E.O. 13985 affirm the advancement of environmental justice and equity for all through the development and funding of programs to invest in disadvantaged or underserved communities.

This Project will provide drought resiliency to the communities of Palm Springs Crest and West Palm Springs Village within the MSWD service area by enabling water resources to be utilized by both of these areas. This Project, once constructed, will not only promote drought resiliency by having access to the water resources within the neighboring community if there are impacts to the local supplies.

Based on the Climate and Economic Justice Screening Tool (CEJST), the entire service area of MSWD with the exception of one census tract is designated as a disadvantaged community (DAC). However, the two communities that will directly benefit from this Project, PSC and WPSV, are designated as DACs as per the CEJST. Figure 3 below shows the proposed alignment of the intertie Project pipeline, the PSC and WPSV communities, the DAC census tracts within MSWD's service area, and MSWD's service area. Considering this Project will increase water reliability within DACs and therefore provide benefits directly to DACs, MSWD is requesting funding above the 50% cost share.

Figure 3. Project Location and MSWD DAC Map (CEJST)



Sub-Criterion D3: Tribal Benefits

Not applicable to this project.

Evaluation Criterion E-Nexus to Reclamation (5 points)

Is there a Reclamation project, facility, or activity within the planning area?

No.

Is the planning area in the same basin as a Reclamation project, facility, or activity?

No.

In what way will the proposed project benefit a basin where a Reclamation project, facility, or activity is located? For example, will the project improve watershed health in a river basin that is adversely impacted by a Reclamation water project?



The project will benefit Reclamation by improving operational efficiency and continued access to local water supplies without having to ultimately turn to reliance on surface water from the Colorado River and the Delta, where Reclamation facilities are located.

Does the applicant have a water service, repayment, or O&M contract with Reclamation?

No, but in 2020, MSWD was awarded \$300,000 from Reclamation for an AMR meter replacement program.

If the applicant does not hold a type of contract named above, does the applicant receive Reclamation water through a Reclamation contractor or by any other contractual means?

No.



SECTION 2: PROJECT BUDGET

As requested in the NOFO, the Project Budget and narrative is attached under the Budget Narrative section of this submission on grants.gov.

SECTION 3: ENVIRONMENTAL AND CULTURAL RESOURCES AND COMPLIANCE

To allow Reclamation to assess the probable environmental and cultural resources impacts and costs associated with each application, all applicants must respond to the following list of questions focusing on NEPA, ESA, and NHPA requirements. Please answer the following questions to the best of your knowledge. If any question is not applicable to the project, please explain why. The application should include the answers to:

- Will the proposed project impact the surrounding environment (e.g., soil [dust], air, water [quality and quantity], animal habitat)? Please briefly describe all earth-disturbing work and any work that will affect the air, water, or animal habitat in the project area. Please also explain the impacts of such work on the surrounding environment and any steps that could be taken to minimize the impacts.

No, this Project application is only for planning documents which will not result in any impacts to the surrounding environment.

- Are you aware of any species listed or proposed to be listed as a Federal threatened or endangered species, or designated critical habitat in the project area? If so, would they be affected by any activities associated with the proposed project?

No, MSWD is not aware of any species listed or proposed to be listed as a Federal threatened or endangered species, or designated critical habitat.

- Are there wetlands or other surface waters inside the project boundaries that potentially fall under CWA jurisdiction as “Waters of the United States?” If so, please describe and estimate any impacts the proposed project may have.

No, there are no wetlands or other surface waters inside the Project boundaries that would be under CWA jurisdiction.

- When was the water delivery system constructed?

MSWD’s water system was first constructed in 1953.

- Will the proposed project result in any modification of or effects to, individual features of an irrigation system (e.g., headgates, canals, or flumes)? If so, state when those features were constructed and describe the nature and timing of any extensive alterations or modifications to those features completed previously.

The Project will not result in any modification of individual features of an irrigation system.

- Are any buildings, structures, or features in the irrigation district listed or eligible for listing on the National Register of Historic Places? A cultural resources specialist at your local



Reclamation office or the State Historic Preservation Office can assist in answering this question.

There are no buildings, structures, or features in the Project area that are listed or eligible for listing on the National Register of Historic Places within this project area.

- *Are there any known archeological sites in the proposed project area?*

There are no known archeological sites in the Project area.

- *Will the proposed project have a disproportionately high adverse effect on low income or minority populations?*

The Project will not have a negative or adverse effect on low income or minority populations. As mentioned above, the Project will provide benefits directly to low income or minority populations.

- *Will the proposed project limit access to and ceremonial use of Indian sacred sites or result in other impacts on tribal lands?*

No, the Project will not limit access to nor ceremonial use of Indian sacred sites or result in other impacts on tribal lands.

- *Will the proposed project contribute to the introduction, continued existence, or spread of noxious weeds or non-native invasive species known to occur in the area?*

The Project will not contribute to the introduction, continued existence, or spread of noxious weeds or non-native invasive species.



SECTION 4: REQUIRED PERMITS OR APPROVALS

There are no permits needed for the design phase of this grant application.



SECTION 5: OVERLAP OR DUPLICATION OF EFFORTS STATEMENT

MSWD confirms there is no overlap between the proposed project and any other active or anticipated proposals or projects in terms of activities, costs, or commitment of key personnel.



SECTION 6: CONFLICT OF INTEREST DISCLOSURE

MSWD is not aware of any actual or potential conflict of interest exists at the time of submission of this application.



SECTION 7: UNIFORM AUDIT REPORTING STATEMENT

MSWD acknowledges it will submit a Single Audit report for that year through the Federal Audit Clearinghouse Internet Data Entry System in accordance with 2 CFR §200 subpart F.



SECTION 8: LETTERS OF SUPPORT

Letters of support are included in Appendix A as required in the NOFO.



SECTION 9: LETTERS OF PARTNERSHIP (Category B Applicants)

Not applicable.

SECTION 10: OFFICIAL RESOLUTION

RESOLUTION NO. 2024-10

A RESOLUTION OF THE BOARD OF DIRECTORS OF THE MISSION SPRINGS WATER DISTRICT AUTHORIZING AN APPLICATION FOR GRANT FUNDING BY THE BUREAU OF RECLAMATION'S FY2024 WATERSMART PLANNING AND PROJECT DESIGN GRANTS FOR PSC/WPSV INTERTIE PROJECT

WHEREAS, the Board of Directors of the Mission Springs Water District has reviewed a revised budget for FY 2023-2024 and has made any desired changes therein; and

WHEREAS, the District has identified the Palm Springs Crest and West Palm Springs Village Intertie Project (the Project) as a priority project to improve system-wide drought resiliency; and

WHEREAS, The United States Department of the Interior offers financial assistance in the form of grant funding through its Bureau of Reclamation's WaterSMART (Sustain and Manage America's Resources for Tomorrow) Planning and Project Design Grants for FY 2024 for this type of project. The FY2024 WaterSMART Planning and Project Design program provides funding up to a maximum of \$400,000 for projects up to 3 years; and

NOW, THEREFORE, BE IT RESOLVED, DETERMINED AND ORDERED by the Board of Directors of Mission Springs Water District as follows:

Section 1: The Board hereby supports a grant application to the FY2024 WaterSMART Planning and Project Design for the Project.

Section 2: The Board hereby authorizes and directs the General Manager, or his or her designee, to complete, review, sign and submit, for and on behalf of the District, a grant application to the Bureau of Reclamation's FY24 WaterSMART Planning and Project Design for the Project.

Section 3: The General Manager, or his or her designee, is authorized and designated to provide the assurances, certifications, and commitments required for the grant application, including executing a financial assistance or similar agreement with the Bureau of Reclamation within established deadlines and any amendments or changes thereto.

Section 4: The General Manager, or his or her designee, is authorized and designated to represent the District in carrying out the District's responsibilities under any grant future agreement, including certifying disbursement requests on behalf of the District and compliance with applicable state and federal laws.

Section 5: If a grant award is made to the District by the Bureau of Reclamation, the District commits, pending Board compliance with the California Environmental Quality

Act (CEQA) and the National Environmental Policy Act (NEPA) and approval of the Project, to provide up to the balance of funds needed to complete the Project.

Section 6: This Resolution shall take effect immediately.

ADOPTED this 20th day of May 2024, by the following vote:

Ayes: Duff, Griffith, Martin, Mayrhofer, Sewell
Noes:
Abstain:
Absent:



Ivan Sewell
President of Mission Springs Water District
and its Board of Directors

ATTEST:



Brian Macy
Secretary of Mission Springs Water District
and its Board of Directors



SECTION 11: LETTERS OF COMMITMENT

Not applicable. MSWD is seeking 100% funding from BOR for a total of \$358,010.



Appendices

Appendix A: Letters of Support

Appendix B: Water Supply Outages Documentation



Appendix A: Letters of Support

STATE CAPITOL
P.O. BOX 942849
SACRAMENTO, CA 94249-0047
(916) 319-2047
FAX (916) 319-2147

DISTRICT OFFICE
41608 INDIAN TRAIL, SUITE D1
RANCHO MIRAGE, CA 92270
(760) 346-6342
FAX (760) 346-6506

Assemblymember Wallis@assembly.ca.gov
<https://ad47.asmc.org/>



COMMITTEES
VICE CHAIR: ARTS, ENTERTAINMENT,
SPORTS, AND TOURISM
GOVERNMENTAL ORGANIZATION
JOBS, ECONOMIC DEVELOPMENT,
AND THE ECONOMY
TRANSPORTATION
UTILITIES AND ENERGY

SELECT COMMITTEES
CALIFORNIA'S LITHIUM ECONOMY
LOCAL PUBLIC SAFETY AND
EMERGENCY PREPAREDNESS
MASTER PLAN FOR HIGHER
EDUCATION IN CALIFORNIA
YOUTH HOMELESSNESS IN SAN
BERNARDINO COUNTY
JOINT COMMITTEE ON THE ARTS

May 20, 2024

Bureau of Reclamation
Water Resources and Planning Office
Attn: Ms. Nickie McCann
Mail Code: 86-63000
P.O. Box 25007
Denver, CO 80225-0007

RE: Letter of Support for the Mission Springs Water District's West Palm Springs Village – Palm Springs Crest Water System Intertie Project for the Bureau of Reclamation WaterSMART Planning and Project Design Grants FY2024- Support

Dear Ms. McCann:

As the Assemblymember for the 47th California Assembly District, the purpose of this letter is to express my enthusiastic support for the Mission Springs Water District's (MSWD) grant application for the Bureau of Reclamation's (USBR) FY 2024 Planning and Design Grant Program. MSWD is submitting the grant application to fund for their Palm Springs Crest (PSC)/ West Palm Springs Village (WPSV) Intertie Project (the Project).

MSWD is implementing the Project to connect two portions of its water system, namely the Palm Springs Crest and West Palm Springs Village communities. Once constructed, the Project will allow the PSC and WPSV communities to be connected to the entire MSWD system thereby expanding the entire systems' water supply portfolio. The Project will provide drought resiliency by enhancing water supply management through water resource optimization that ensures sustainability of MSWD's water resources while satisfying human and environmental demands.

The severity of California's recent droughts coupled with the extended dry period on the Colorado River and the projected long-term impacts of climate change underscore the need for continued diversification of Southern California's water resource portfolio. A major priority of MSWD is to maintain a reliable and resilient water supplies within its entire service area to address potential water shortages caused by extreme weather cycles that are features of California's climate.

Given these reasons, I support the MSWD's application for the BOR WaterSMART Planning and Design Grants FY 2024 and hope the application is selected to receive a grant. If you have any questions, please do not hesitate to contact my office at Assemblymember.Wallis@assembly.ca.gov or at 760-346-6342

Sincerely,

GREG WALLIS
Assemblymember, 47th District



May 8, 2024

U.S. Bureau of Reclamation
Water Resources and Planning Office
Attn. Ms. Nickie McCann
Mail Code: 86-63000
P.O. Box 25007
Denver, CO 80225-0007

RE: Letter of Support for the Mission Springs Water District's West Palm Springs Village – Palm Springs Crest Water System Intertie Project for the Bureau of Reclamation WaterSMART Planning and Project Design Grants FY2024

Dear Ms. McCann,

The purpose of this letter is to express the Coachella Valley Regional Water Management Group's support for the Mission Springs Water District's (MSWD) grant application for the Bureau of Reclamation's (USBR) FY 2024 Planning and Design Grant Program. MSWD is submitting the grant application to fund the Palm Springs Crest (PSC)/ West Palm Springs Village (WPSV) Intertie Project (the Project).

MSWD is implementing the Project to connect two portions of its water system, namely the Palm Springs Crest and West Palm Springs Village water systems. Once constructed, the Project will allow the PSC and WPSV communities to be interconnected to one another, providing much needed mutual backup capabilities. The Project will provide drought resiliency by enhancing water supply management through water resource optimization that ensures sustainability of MSWD's water resources while satisfying human and environmental demands.

The severity of California's recent droughts coupled with the extended dry period on the Colorado River and the projected long-term impacts of climate change underscore the need for continued diversification of Southern California's water resource portfolio. A major priority of MSWD is to maintain reliable and resilient water supplies within its entire service area to address potential water shortages caused by extreme weather cycles that are features of California's climate.

Given these reasons, we support MSWD's application for the BOR WaterSMART Planning and Design Grants FY 2024 and hope the application is selected to receive a grant.

Sincerely,



A handwritten signature in black ink, appearing to read "Zoe Rdr", is positioned above the printed name.

Zoe Rodriguez del Rey
On behalf of the Coachella Valley Regional Water Management Group
Water Resources Manager
Coachella Valley Water District

CVRWMG agency representatives:
Steve Johnson, Desert Water Agency
Ron Buchwald, Valley Sanitary District
Castulo Estrada, Coachella Water Authority
Reymundo Trejo, Indio Water Authority
Marion Champion, Mission Springs Water District



RAUL RUIZ, M.D.
Member of Congress
25th District of California

Washington, D.C. Office:
2342 Rayburn House
Office Building
Washington, D.C. 20515
Phone: 202-225-5330

Congress of the United States
House of Representatives
Washington, DC 20515-3605

May 20, 2024

U.S. Bureau of Reclamation
Water Resources and Planning Office
Attn: Ms. Nickie McCann
P.O. Box 25007
Denver, CO 80225

Dear U.S. Bureau of Reclamation:

I write in support of the Mission Springs Water District (MSWD) and their application for the United States Bureau Reclamation (USBR) Fiscal Year 2024 (FY24) Water SMART Planning and Project Design grant program. If awarded, this funding would enable MSWD to connect two portions of its water system, namely the Palm Springs Crest (PSC) and West Palm Springs Village (WPSV) communities.

MSWD's PSC/WPSV Intertie Project (the Project) will allow the PSC and WPSV communities to be connected to the entire MSWD system thereby expanding the entire systems' water supply portfolio. USBR FY24 WaterSMART Planning and Project Design funding would provide drought resiliency by enhancing water supply management through water resource optimization that ensures the sustainability of MSWD's water resources while satisfying human and environmental demands.

As the Representative of California's 25th Congressional District, I understand the impact that MSWD's Project would have on the lives of the individuals I serve and represent. The severity of California's recent droughts, the extended dry period on the Colorado River, and the projected long-term impacts of climate change underscore the need for continued diversification of Southern California's water resource portfolio. A major priority for MSWD is to maintain a reliable and resilient water supply within its entire service area to address potential water shortages caused by extreme weather cycles that are features of California's climate.

I believe MSWD has the capacity to successfully implement the PSC/WPSV Intertie Project, and I urge full and fair consideration, consistent with all relevant program rules and regulations. If you have any additional questions, please feel free to contact my office at (760) 424-8888.

Sincerely,

Raul Ruiz, M.D.
Member of Congress



County of Riverside

RIVERSIDE OFFICE:
4080 Lemon Street, 5th Floor
Riverside, CA 92502-1647
(951) 955-1040
Fax (951) 955-2194



DISTRICT OFFICE/MAILING ADDRESS
78015 Main Street, Ste. 205
La Quinta, CA 92253-3420
(760) 863-8211
Fax (760) 863-8905

SUPERVISOR V. MANUEL PEREZ
FOURTH DISTRICT

May 21, 2024

Dear U.S. Bureau of Reclamation:

I am writing to express my support for the application by the Mission Springs Water District to the U.S. Bureau of Reclamation WaterSMART grant program to fund the water district's proposed Palm Springs Crest/West Palm Springs Village Intertie Project.

Mission Springs Water District is seeking to implement this project to connect two portions of its water system, in the Palm Springs Crest and West Palm Springs Village communities. Once constructed, the project would allow the Palm Springs Crest and West Palm Springs Village communities to be connected to the entire Mission Springs Water District system, thereby expanding the entire systems' water supply portfolio. The project would provide drought resiliency by enhancing water supply management through water resource optimization that ensures sustainability of Mission Springs Water District's water resources while satisfying human and environmental demands.

As supervisor for Riverside County's Fourth District, representing eastern Riverside County and the mountain communities, I support this grant application by the Mission Springs Water District and the potential of this project to maintain reliable and resilient water supplies in the Coachella Valley.

If you have any questions about my support for this funding opportunity, please don't hesitate to contact me at (760) 863-8211. Thank you for your consideration.

Sincerely,

V. MANUEL PEREZ
Supervisor, Fourth District

VMP:das

CITY OF DESERT HOT SPRINGS

OFFICE OF THE MAYOR

11999 Palm Drive • Desert Hot Springs • CA • 92240
(760) 329-6411 • www.cityofdhs.org

May 21, 2024

Bureau of Reclamation
Water Resources and Planning Office
Attn: Ms. Nickie McCann
Mail Code: 86-63000
P.O. Box 25007
Denver, CO 80225-0007

RE: Letter of Support for the Mission Springs Water District's West Palm Springs Village – Palm Springs Crest Water System Intertie Project for the Bureau of Reclamation WaterSMART Planning and Project Design Grants FY2024

Dear Ms. McCann,

The purpose of this letter is to express the City of Desert Hot Springs's support for the Mission Springs Water District's (MSWD) grant application for the Bureau of Reclamation's (USBR) FY 2024 Planning and Design Grant Program. MSWD is submitting the grant application to fund for their Palm Springs Crest (PSC)/ West Palm Springs Village (WPSV) Intertie Project (the Project).

MSWD is implementing the Project to connect two portions of its water system, namely the Palm Springs Crest and West Palm Springs Village communities. Once constructed, the Project will allow the PSC and WPSV communities to be connected to the entire MSWD system thereby expanding the entire systems' water supply portfolio. The Project will provide drought resiliency by enhancing water supply management through water resource optimization that ensures sustainability of MSWD's water resources while satisfying human and environmental demands.

The severity of California's recent droughts coupled with the extended dry period on the Colorado River and the projected long-term impacts of climate change underscore the need for continued diversification of Southern California's water resource portfolio. A major priority of MSWD is to maintain reliable and resilient water supplies within its entire service area to address potential water shortages caused by extreme weather cycles that are features of California's climate.

Given these reasons, I support the MSWD's application for the BOR WaterSMART Planning and Design Grants FY 2024 and hope the application is selected to receive a grant.

Sincerely,



Scott Matas, Mayor
City of Desert Hot Springs



SECTION 2: PROJECT BUDGET

As stated above, MSWD is seeking 100% BOR funding for this Project and will provide funding as-needed to complete the Project if costs are incurred above the expected amount of \$358,010.

Table 1. Project Funding Sources

FUNDING SOURCES	AMOUNT
Non-Federal Entities	
N/A. MSWD is requesting 100% grant funding from BOR	\$0
Non-Federal Subtotal	
REQUESTED RECLAMATION FUNDING	\$358,010.00



Budget Proposal

The below project budget is an estimate of the time and effort needed for consultants to prepare the required utility research, preliminary booster station design, alignment study & preliminary design, and the environmental assessments.

Table 2. Project Budget

Budget Item	Computation		Quantity Type	Total Costs
	\$/Unit	Quantity		
Salaries and Wages				\$ 48,056
General Manager	\$ 114.90	10	Hours	\$ 1,149
Asst. General Manager	\$ 77.40	5	Hours	\$ 387
Director of Operations	\$ 99.77	40	Hours	\$ 3,991
Engineering Manager/Project Lead	\$ 81.32	425	Hours	\$ 34,561
Programs & Public Affairs Specialist	\$ 60.46	9	Hours	\$ 544
Contracts Analyst	\$ 42.80	20	Hours	\$ 856
Business Analyst/Asst. Project Lead	\$ 42.80	126	Hours	\$ 5,393
Accountant	\$ 47.24	20	Hours	\$ 945
Accounting Manager	\$ 57.55	4	Hours	\$ 230
Fringe Benefits				\$ 22,953
General Manager	\$ 38.01	10	Hours	\$ 380
Asst. General Manager	\$ 26.13	5	Hours	\$ 131
Director of Operations	\$ 44.29	40	Hours	\$ 1,772
Engineering Manager/Project Lead	\$ 39.27	425	Hours	\$ 16,690
Programs & Public Affairs Specialist	\$ 26.55	9	Hours	\$ 239
Contracts Analyst	\$ 23.49	20	Hours	\$ 470
Business Analyst/Asst. Project Lead	\$ 23.49	126	Hours	\$ 2,960
Accountant	\$ 12.83	20	Hours	\$ 257
Accounting Manager	\$ 14.01	4	Hours	\$ 56
Travel				
N/A				
Equipment				
N/A				
Supplies/Materials				
N/A				
Contractual				
Planning and Design				\$ 287,000
Utility Research	\$ 21,000	1	LS	\$ 21,000
Preliminary Booster Station Design	\$ 150,000	1	LS	\$ 150,000
Alignment Study & Preliminary Waterline Design	\$ 96,000	1	LS	\$ 96,000
Environmental Assessment	\$ 20,000	1	LS	\$ 20,000
Third-Party In-Kind Contributions				
N/A				
Other				
N/A				
TOTAL DIRECT COSTS				\$ 358,010
Indirect Costs				
N/A				
TOTAL ESTIMATED PROJECT COSTS				\$ 358,010



Budget Narrative

Salaries and Wages

MSWD is seeking reimbursement for MSWD personnel time. Anticipated personnel time cost is \$48,056. The listed roles encompass all MSWD who will be involved in project implementation.

Fringe Benefits

MSWD is seeking reimbursement for MSWD personnel time. Anticipated personnel fringe benefits cost is \$22,953. The listed roles encompass all MSWD who will be involved in project implementation.

Travel

Not applicable.

Equipment

Not applicable. There is no equipment associated with the design and planning phase of the Project.

Materials and Supplies

Not applicable. There are no materials and supplies associated with the design and planning phase of this Project.

Contractual

MSWD will procure a consultant(s) through a competitive bid process that follows the applicable federal codes to provide the preliminary booster station design, environmental assessment, utility research, and an alignment study and preliminary waterline design. As stated above the utility research is expected to cost \$21,000, the preliminary booster station design is expected to cost \$150,000, the Alignment Study and Preliminary Waterline Design is expected to cost \$96,000 and the environmental assessment is expected to cost \$20,000. These estimates are based on similar studies and contract work that MSWD has procured in recent years for similar projects.

Third-Party In-Kind Contributions

Not applicable.

Environmental and Regulatory Compliance Costs

Not applicable. This is Included in the Contractual section.

Other Expenses

All Project costs are captured in the Budget Proposal table above. The only costs classified as "Other" are the NEPA compliance, BOR's environmental compliance, and administrative



expenses such as FedEx shipping, reproduction, and other reimbursable expenses which MSWD will pay and is not part of the Project budget.

Indirect Costs

Not applicable.



Appendix B: Water Supply Outages Documentation

The documentation detailing the various water supply outages in the PSC and WPSV communities can be accessed via this [link](#).