



## WaterSMART Planning and Project Design Grants



WaterSMART Project Design Program Projects For Fiscal Year 2023 and 2024  
Notice of Funding Opportunity No. R23AS00109

# FOUNTAIN CREEK RESTORATION PROJECT

## Technical Proposal

### Applicant

City of Colorado Springs  
Stormwater Enterprise  
30 S. Nevada Ave., Suite 401  
Colorado Springs, CO 80901

### Project Manager

Timothy Biolchini, PE  
SW CIP Program Manager  
(719) 385-5612 office  
Timothy.Biolchini@coloradosprings.gov

May 13, 2024





# Table of Contents

Table of Contents .....	1
Executive Summary .....	2
Project Location .....	3
Project Description .....	5
Planning & Project Design Evaluation Criteria.....	5
Other information .....	19
Appendices.....	1

## Figures

Figure 1. Project Location.....	3
Figure 2. Fountain Creek Watershed .....	4
Figure 3. Fountain Creek corridor encroached by power plant and Interstate.....	6
Figure 4. In-creek structures .....	6
Figure 5. White water rafting on the Arkansas River .....	7
Figure 6. Flathead Chub and Arkansas Darter.....	8
Figure 7. Power transmission line located in Fountain Creek .....	8
Figure 8. Existing and proposed channel conditions .....	9
Figure 9. Conceptual cross section of Fountain Creek with a bankfull floodplain bench. ....	10
Figure 10. Disadvantaged Communities in and adjacent to Project Area .....	17
Figure 11. Dorchester Park Stone Pavilion.....	20

## Tables

Table 1. Partnering organizations. ....	12
Table 2. Key Supporting Organizations.....	13
Table 3. Estimated Costs.....	14
Table 4. Project Schedule .....	15
Table 5. Required Permits and Status .....	19

## Appendices

Appendix A – Fountain Creek Design Scope .....	22
Appendix B – Summary of Studies .....	24
Appendix C – Conceptual Evaluation of Potential Flood Risk Reduction and Aquatic Resource Restoration .....	31
Appendix D – Summary Report of Economic Analysis .....	36
Appendix E – Collaborative Agreement between the City of Colorado Springs, Fountain Creek Watershed, Inc. and Colorado Springs Utilities.....	44
Appendix F – Letters of Support.....	75





Yemi Mobolade  
Mayor

Ms. Nickie McCann  
Water Resources and Planning Office  
Bureau of Reclamation  
P.O. Box 25007  
Denver Federal Center  
Denver CO 80225-0007

May 21, 2024

Dear Ms. McCann,

I am pleased to present the attached proposal on behalf of the City of Colorado Springs. Like you, our citizens and I believe in the mission of the Bureau of Reclamation to manage, develop, and protect water and related resources in an environmentally and economically sound manner in the interest of the American public. My administration is working hard to develop strategies to promote this vision for our local community and specifically along both our Monument and Fountain Creek waterways. The 2024 WaterSMART Planning and Project Design grant application for the **Fountain Creek Restoration Project**, will focus on developing an aquatic habitat restoration plan which is essential to restore the health and vitality of Fountain Creek, which is approximately 75 miles long and is fed by a tributary area of over 900 square miles.

This project represents a critical next step in realizing the long-term vision for the creek as articulated in the COS Creek Plan, a community-wide long-range planning document that incorporates the values and goals of numerous organizations, neighborhoods, and local government representatives. Specifically, the COS Creek Plan establishes a comprehensive vision for the future investments and stewardship of the Fountain Creek Watershed with a specific focus on segments of the Monument and Fountain creeks adjacent to Downtown Colorado Springs. The COS Creek Plan establishes an implementable vision, which respects our communities' values, responds to infrastructure needs, and leverages opportunities.

The WaterSMART Planning and Project Design funding is absolutely necessary to provide support for this highly degraded stretch of Fountain Creek. The reach is significantly altered from its historic condition due to urban development along its length. The reach is highly confined with no floodplain terracing, the natural habitat is deteriorated, and most of the natural wetlands are destroyed and have been replaced mostly by invasive species. Design work will be used to improve the floodplains, re-establish floodplain terraces to create a range of native plant communities and wildlife habitats, allowing for more diverse and extensive passive and nature-based public recreation uses.

I enthusiastically request that the Bureau of Reclamation consider the importance of these improvements and strongly consider the funding of this project. Thank you for your consideration.

Onward and upward,

Blessing A Mobolade  
Mayor, City of Colorado Springs

30 South Nevada Avenue, Suite 601 • TEL 719-385-5900

Mailing Address: Post Office Box 1575, Mail Code 610 • Colorado Springs, Colorado 80901-1575



## Executive Summary

May 23, 2024

The City of Colorado Springs Stormwater Enterprise  
Colorado Springs, El Paso County, Colorado

---

The City of Colorado Springs Stormwater Enterprise (the City), a Category A applicant, in collaboration with Colorado Springs Utilities (CSU) and Fountain Creek Watershed Inc. dba Pikes Peak Waterways (PPW), a Category B applicant, is applying for the Bureau of Reclamation Planning and Project Design Program (PDP) funding in the amount of **\$400,000** for a **Task B - Project Design Grant**. Funds will be used to develop 60% design for the Fountain Creek Restoration Project (the Project) with the goal of restoring and protecting aquatic ecosystems along a 1.5-mile reach in the Fountain Creek basin, located in Colorado Springs, El Paso County, Colorado.

Once several hundred feet wide with a highly sinuous and vegetated low flow channel with healthy riparian flood plain benches, and a stable bed slope and sediment supply, the reach is nearly devoid of its former natural functions due to adjacent development the construction of Interstate 25 and a nearby coal fire power plant. Much of the reach is highly confined with structures installed to contain the creek during high-water periods, and there is little to no flood plain benching. Natural habitat is deteriorated, with the majority of the natural wetlands are destroyed. Native plant communities have been replaced mostly by invasive species. The banks of the channel are steep and highly erosive. In-creek concrete structures designed to control higher flow velocities led to water temperatures, and severely limited the range and habitat of two threatened fish species. The project is a component of the [COS Creek Plan](#), the Fountain Creek Watershed Vision and Implementation Plan prepared by Pikes Peak Waterways. This comprehensive vision incorporates stormwater and flood risk management practices to maintain and restore natural functions of the creeks, provide opportunities for recreation and relaxation, and enhance the economic value and quality of life for citizens and visitors of Colorado Springs. The proposed project incorporates restoring and improving aquatic resources within the stream corridor through a holistic approach that weaves together the in-stream, floodplain, and riparian buffer habitats to create a higher functioning, lower maintenance stream system.

The restoration effort is not focused on a Federal facility nor will it involve Federal land. The project is estimated to be completed by 4<sup>th</sup> Quarter 2026. The City of Colorado Springs is in full support of this project and is excited to move forward with design activities in anticipation of construction in the near future.



## Project Location

The Project will develop 60% design for an extensive aquatic ecosystem restoration project in and along Fountain Creek. The project area extends north from Shooks Run running approximately 1.5 miles north adjacent to the Interstate 25 (I25) boundary and terminates at Cimmaron Street just north of the America the Beautiful Park (Figure 1). The Project is located in Colorado Springs El Paso County, Colorado at Latitude 38°48'N and Longitude 104°49'W.

*Over time, the natural character and functions of the creek have been altered and disconnected, the richness diminished, and the creek access made unreachable.*

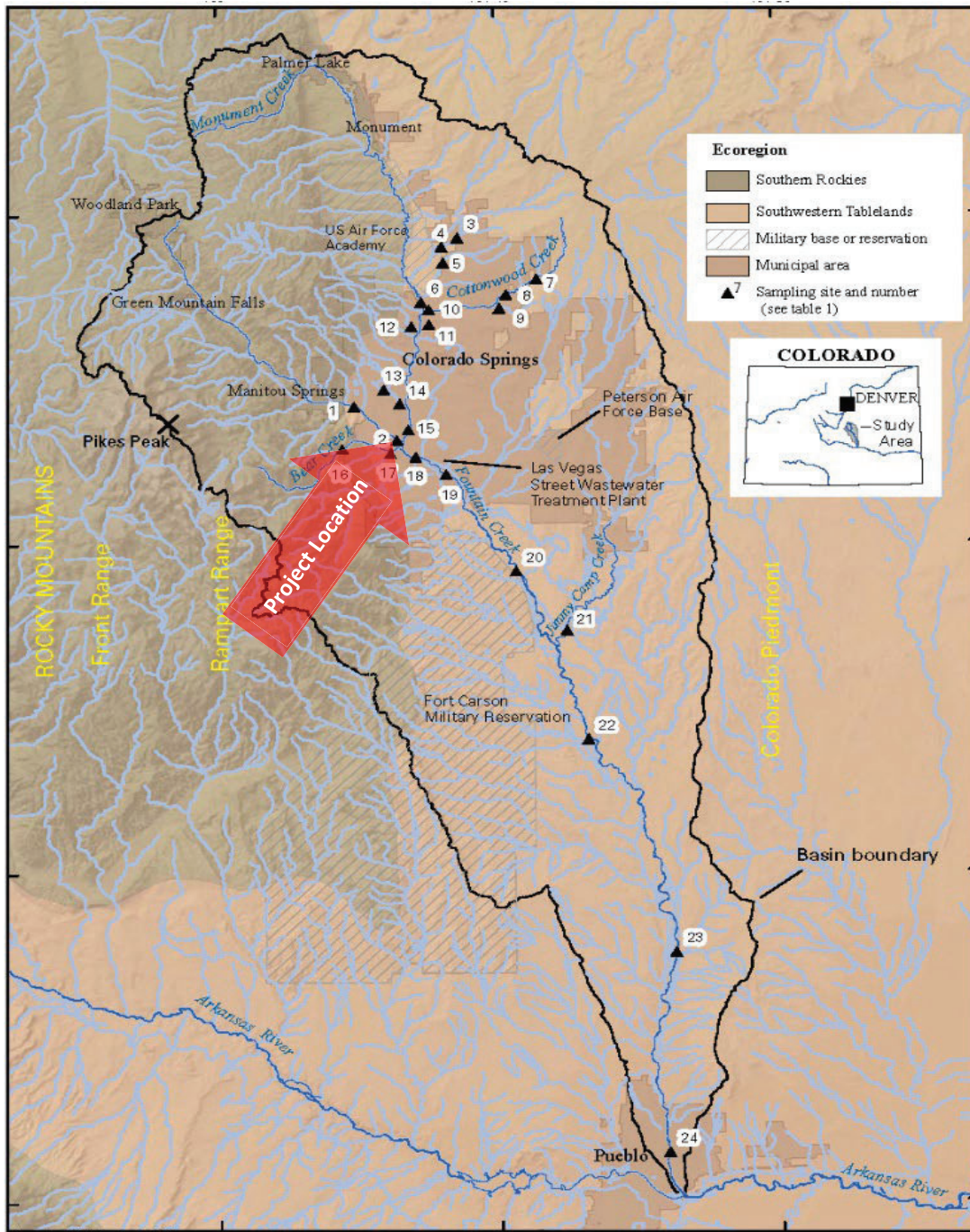
The Fountain Creek basin drains approximately 926 square miles of the eastern slope of the Rocky Mountains. Fountain Creek is a major tributary of the of the Arkansas River Watershed in south central Colorado (Figure 2 on Page 2). Fountain Creek, approximately 75 miles long, is one of the most unstable, difficult to manage and most studied watershed in the US. The watershed changes in elevation from over 14,000 to 5,500 feet above sea level, and contains mountains, foothills, and highland desert. Fountain Creek experiences extremes flow rate changes from base flows of 75 cubic feet per second (cfs) to flood flows of over 20,000 cfs. The Creek also sees extreme transports of sediment, temperature changes and highly erratic flow regimes. Fountain Creek flows through nine separate municipalities, serves as a municipal water supply, an agricultural water supply, and as an augmentation vehicle for flows transported from the western slopes of Colorado. Finally, the watershed has suffered from two major forest fires in 2012 and 2013, with burn areas of more than 30,000 acres.

**Figure 1. Project Location**





Figure 2. Fountain Creek Watershed



Base from U.S. Geological Survey  
 Albers Equal-area projection  
 Standard parallels 37°30' N and 40°30' N  
 Central meridian 105°30' W



- Monitoring locations within project area:
- (15) USGS SIN 07104905 – Monument Creek at Bijou Street At Colorado Springs, Colorado
  - (18) USCS SIN 07105500 - Fountain Creek at Colorado Springs, Colorado
  - (19) USGS SIN 0105530 – Fountain Creek below Janitell Road Below Colorado Springs,

Source: U.S Geological Survey



## Project Description

The Project's purpose is to develop scope and design for restoration and rehabilitation of Fountain Creek, along approximately 1.5 miles of Fountain Creek through the heart of downtown Colorado Springs, and to provide funding for additional public outreach regarding the project's scope and benefits. The project scope is included as **Appendix A – Fountain Creek Design Scope**. The section of creek is significantly altered from its historic location and condition due to the development of the City over the last 100 years. The corridor was once several hundred feet wide with a highly sinuous and vegetated low flow channel with healthy riparian flood plain benches, and a stable bed slope and sediment supply.

In response to the confined channel and resulting increases in flow velocities, several concrete structures were built in the 1950's and 1960's to contain the creek during high-flow periods. These structures have led to an increase in flow temperatures and severely limited the range and deteriorated the habitat of two threatened species of fish.

The Project would fund the following activities:

- Engineering & design resulting in a 60% design package.
- Stakeholder engagement and public outreach.
- Hydrologic and hydraulic modeling.
- Revegetation plan.

To accomplish the following restoration goals:

1. Restoring a hydraulically-connected floodplain and re-establishing floodplain terraces.
2. Removing and modifying barriers to fish passage and constructing grade control structures to allow for fish passage.
3. Stabilizing banks to control erosion.
4. Restoring wetlands and native vegetation.

## Planning & Project Design Evaluation Criteria

### Evaluation Criterion A. Project Benefits

#### Critical Threats

Past development and containment has led to the significant deterioration of water quality, an increase in erosion, and a decrease in healthy wildlife habitat. If unrestored, the creek will continue to degrade, affecting nearby communities, the aquatic ecosystem and downstream users.

#### Adjacent development

The Fountain Creek in the project area has been significantly altered from its historic location and condition by extensive urban development. The corridor was once several hundred feet wide



with a highly sinuous and vegetated low flow channel with healthy riparian flood plain benches, and a stable bed slope and sediment supply. Due to the development of the downtown area, construction of I25, construction of a nearby coal fire power plant, and adjacent land-use impacts, the creek is nearly devoid of its former natural functions (**Figure 3**). The reach is highly confined with no flood plain benching, the natural habitat is deteriorated, and the majority of the natural wetlands are gone and have been replaced mostly by invasive species. The banks of the channel are also steep and highly erosive.

**Figure 3. Fountain Creek corridor encroached by power plant and Interstate**



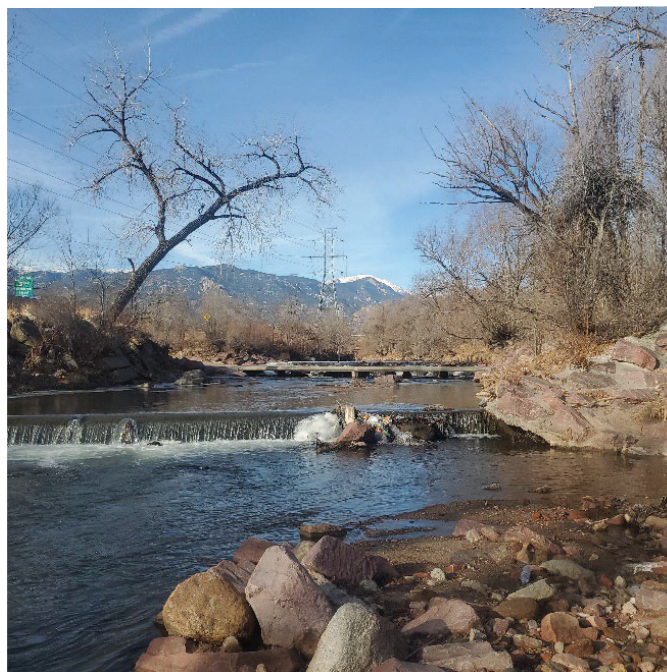
**In-creek structures**

Much of the reach is highly confined with structures installed to contain the creek during high-water periods, and there is little to no flood plain benching. Natural habitat is deteriorated, and the majority of the natural wetlands are destroyed. Invasive species have replace native plants. Due to the confined channel and resulting increases in flow velocities, several concrete structures have been installed over the last several decades. These block fish passage, restrict natural flow and contribute to increased flow temperatures (**Figure 4**). Finally, CSU’s stormwater outflow valve is currently is vulnerable to flooding during high-water periods, resulting in compromised water quality.

**Figure 4. In-creek structures**

**Downstream threats**

Downstream water uses and users are also threatened by the degradation of the Fountain Creek reach. Steep, highly erosive banks contribute to excess sedimentation for farms. The CSU Downstream from the project is the Colorado Springs wastewater treatment plant is negatively affected by high water temperatures.





## Impacts to users

### Municipal water and agricultural water supplies

In Colorado Springs, census tracts adjacent to Fountain Creek in the project area rank in the 91<sup>st</sup> percentile for wastewater discharge toxic concentrations according to the [Climate and Economic Justice Screening Tool](#).

Fountain Creek and the Fountain Creek Watershed are significant municipal water supply sources and conveyance

systems for Colorado Springs, El Paso County, and many communities to the south. The creek also provides agricultural water supply for areas directly south of Colorado Springs and areas into the Lower Arkansas Valley. Fountain Creek is a major tributary to the Arkansas Valley watershed, and hosts thousands of recreational users on the world-renown Arkansas River (**Figure 5**).

**Figure 5. White water rafting on the Arkansas River**



*Source: VisitCOS*

Fountain Creek produces and transports an unhealthy amount of sediment to and through downstream communities and agricultural areas. Additionally, the enormous growth of the City of Colorado Springs has resulted in dramatic increases in flood flows during precipitation events. Due to the increases in flows and sediment generation, the downstream agricultural areas and communities have experienced significant bank erosion, sedimentation and water quality reduction, losses in levee capacities, increases in water temperatures, and other negative impacts.

### Species habitat limitation and deterioration

Fountain Creek provides a habitat for populations of fish and invertebrates and is the second most monitored waterway in the US. Colorado Springs Utilities collects aquatic life data (macroinvertebrates and fish) as part of a Joint Funding Agreement with the Utilities, City Stormwater and the USGS. This program in whole collects flow (transit loss and gauging), water quality parameters, aquatic life, and geomorphology on Monument/Fountain Creek. Fish and invertebrate populations are monitored along the reach including at monitoring locations located directly upstream, within and downstream of the project area. Three stations are located just above, within and just below the project area:

1. USGS SIN 07104905 – Monument Creek at Bijou Street At Colorado Springs, Colorado
2. USGS SIN 07105500 - Fountain Creek at Colorado Springs, Colorado
3. USGS SIN 0105530 – Fountain Creek below Janitell Road Below Colorado Springs



One [study](#) that reviewed changes in the biological communities from 2003–2016 showed age-0 flathead chub populations were adversely impacted by the amount of peak flow days from May through August. There was minimal survival of this species' age group when the 98th percentile of average streamflow occurred over 25 days during this period.

The Arkansas Darter has also been identified as threatened in the reach. In Colorado, the flathead chub is considered “State Special Concern,” while the Arkansas Darter is considered a “State Threatened” species (**Figure 6**).

**Figure 6. Flathead Chub and Arkansas Darter**



Source: Missouri Department of Conservation



Source: Colorado Parks and Wildlife, courtesy of Kyle Davidson.

A summary of the supporting study documentation can be found in **Appendix B**. In addition, water engineers referenced the following databases to track data over time along the reach:

1. [Fish data collected within the greater Fountain Creek Basin, Colorado](#)
2. [Invertebrate data collected within the greater Fountain Creek Basin, Colorado](#)
3. [USGS Water Data](#)

**Threats to infrastructure**

A power transmission line tower located in the creek bed is has suffered structural damage during high-water events, putting the power grid and the public at risk (**Figure 7**).

**Figure 7. Power transmission line located in Fountain Creek**





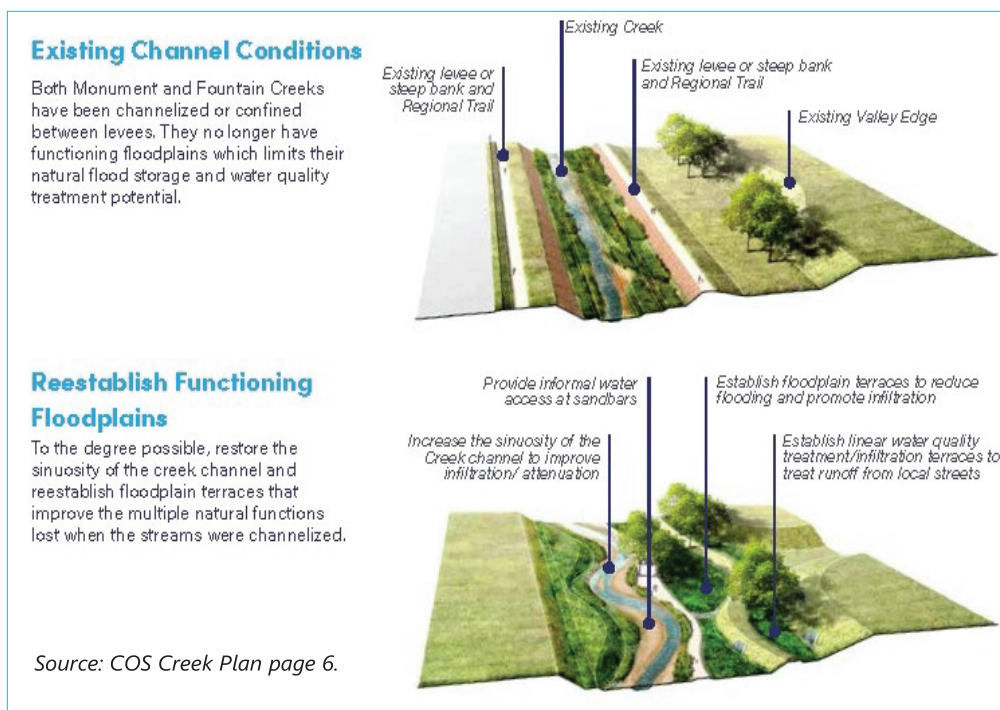
## Project benefits

The Project will design several river corridor restoration techniques and improvements that will rehabilitate degraded aquatic ecosystems and restore natural creek functions through a holistic approach that weaves together the in-stream, floodplain, and riparian buffer habitats to create a higher functioning, lower maintenance stream system (**Figure 8**).

### 1. Restoring a hydraulically-connected floodplain and re-establishing floodplain terraces.

The proposed project would establish a 50-foot-wide floodplain corridor on approximately 80% of the project length (8,000 linear feet). The “Conceptual Evaluation of the Potential Flood Risk Reduction and Aquatic Resource Restoration” (attached as **Appendix C**) shows a potential average flood elevation reduction of 0.9 feet and up to 2 feet in specific locations. The evaluation indicates that flood risk would be reduced by allowing high energy flood flows to spread across a greater top width reducing water depths and velocities. The bench would improve flood safety by developing a transition zone where high flows would have shallower depths and lower velocities than the primary channel. The reduction in flow elevations will provide significant protection for existing buildings, the transmission tower, stormwater outflow valve, bridges, above ground utilities and a critical section of Interstate 25, which runs parallel to the Project Area. The design will improve water quality by capturing and infiltrate runoff from neighborhoods. The proposed design is a nature-based feature envisioned to be a mosaic of frequently flooded overbank areas that could provide valuable wetland habitat during low flow conditions while being available to safely convey large flood flows during storm events.

**Figure 8. Existing and proposed channel conditions**





A floodplain terrace at a lower elevation than the existing floodplain, will provide valuable wetland habitat during low flow conditions and the resulting lower water temperatures and reduced suspended sediment load will improve aquatic fish habitat for rainbow and brown trout, as well as the Arkansas Darter and Flathead.

Intermediate terraces will capture and infiltrate flows from larger storms and store sediment and to provide recreation uses and adventure sports opportunities. Possible recreation opportunities include formal and informal paths for walking, biking and hiking.

Upper terraces will capture and infiltrate runoff from neighborhoods and will include neighborhood and urban parks. It will also facilitate the re-establishment of diverse native riparian plant communities and wildlife habitat and restore wetlands.

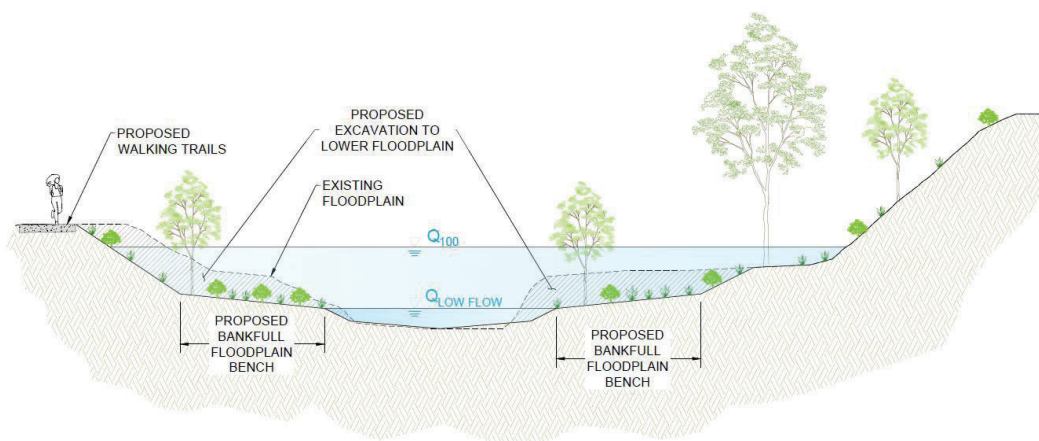
**2. Removing and modifying barriers to fish passage and constructing grade control structures to allow for fish passage.**

The project will provide design to replace existing concrete drop structures which are impassable to the aquatic wildlife and threatened fish species. with grade control structures designed for fish passage and to provide areas for spawning. In-stream improvements will also include a series of riffle-pool complexes. These structural improvements will provide vertical channel stabilization, control velocities in the base flow and flood flow conditions, stabilize the creek bed, dissipate stream energy and stabilize sediment load. Additionally the restoration will allow for fish passage and aquatic ecosystem rehabilitation.

**3. Stabilizing banks to control erosion.**

The project will provide a stable platform and dimension for flood flows to be conveyed (**Figure 9**). Bed and bank stabilization will stabilize the side banks and main channel of Fountain Creek, reduce sediment generation, slow flows, and lower the risk of damage to infrastructure in the area and downstream.

**Figure 9. Conceptual cross section of Fountain Creek with a bankfull floodplain bench.**





#### ***4. Restoring wetland and native vegetation.***

The reach currently contains approximately 6.2 acres of natural wetland, and the project would add approximately 15 acres of new and restored wetland habitat, a 200% increase of from existing conditions. The plan also envisions replacing invasive and non-native species with robust revegetation that can withstand high velocities and shear stresses. This would improve species diversity from plantings (including pollinator species) and re-create environmental niches to support an array of habitats and species, providing direct benefits to aquatic species, macro invertebrate, and bird habitat. Native vegetation will also stabilize banks, reduce erosion, provide shade (thereby lowering the water temperatures), provide habitat for riparian animals, increase nutrient uptake and reduce nutrient load downstream of the project area.

#### **Additional Benefits**

##### ***Downstream benefits***

Downstream communities and agricultural operations will directly benefit from the proposed improvements by experiencing lower flows, less sediment transport and deposition, and improved water quality. Downstream users include the Cities of Fountain and Pueblo, and agricultural and recreational users. Municipal users will benefit from the reduced water temperature, reduced sediment, reduced pollution and controlled high-water flows. Agricultural users benefit from the reduced sediment load and reduced pollution. The Arkansas River also hosts numerous recreational users, including world-class white-water rafting and fishing. Recreational users will benefit from the increased aquatic habitat and populations, reduced sediment and more controlled high-water events.

##### ***Public Safety***

The project will improve public safety in three ways. Currently the reach is isolated and cut off from the nearby neighborhoods by industrial development, the decommissioned Drake Power Plant, and outdated infrastructure. The isolation has led to a number of encampments along the reach by those experiencing homelessness. The resulting human-generated pollution and safety concerns have further inhibited enjoyment of the creek by the residents of the nearby neighborhoods. It is anticipated that additional and frequent access to the creek will reduce the isolation and in turn reduce the transient population.

Secondly, design will include stabilization and erosion protection to reduce the risk of failure of the transmission line tower located within the creek bed mentioned above, thereby reducing the risk of failure, danger to the to the public and power supply grid failure. Finally, improvements along the project area will reduce water temperature, benefitting the downstream Colorado Springs wastewater treatment plant. Mitigation around CSU's stormwater outflow valve will mitigate flooding vulnerability and the danger of drinking water contamination.

##### ***Community Health Benefits***

This project will have significant positive effects on the physical and emotional health of the citizens of Colorado Springs and other surrounding communities. The project will improve water quality by leading to significant reductions to pollutants. The project will also provide several



areas for outdoor recreation, along with walking and running paths, bike paths, and specific areas for interaction with water. These opportunities will encourage citizens to play, exercise, engage in community, and enjoy the natural environment. Annual health benefits from the project are estimated at \$41 million per year (Please see **Appendix D - “2022 Potential Economic Impacts of the Proposed Fountain Creek Restoration and Improvements Project”**)

## Evaluation Criteria B- Inclusion of Stakeholders, Stakeholder Support, and Previous Planning Efforts

### Existing Water Planning efforts

The Project is part of a large comprehensive collaborative project between multiple agencies with diverse goals that will provide increased water quality through connected floodplains and wetlands, decreased wildfire risk by removal of invasive species trees and other non-riparian vegetation, and a public amenity through creek access from the existing trails to the water's edge. The project is based on extensive and ongoing planning efforts by the City, Colorado Springs Utilities, non-profit organizations and the public (**Table 1**).

**Table 1. Partnering organizations.**

<b>Fountain Creek Watershed Flood Control and Greenway District</b>	A regional governing body and was formed for the protection and restoration of the Fountain Creek Watershed, Fountain Creek, and its tributaries.
<b>City of Fountain</b>	Fountain Creek runs directly through the City of Fountain, located immediately south of Colorado Springs. The project will directly improve water quality, reduce flooding, and restore habitat in Fountain Creek.
<b>Colorado Springs Utilities (CSU)</b>	CSU is a four-service utility which provides water, sewer, electric and gas to the City of Colorado Springs and other parts of El Paso County. CSU also has several vital utilizes utilities within the project reach and utilizes Fountain Creek for the collection and transport of municipal and agricultural water supply.
<b>El Paso County (County)</b>	The City of Colorado Springs is located with El Paso County. The County is very supportive of the project and is excited to see improvements to Fountain Creek.
<b>Pikes Peak Area Council of Governments (PPACG)</b>	PPACG is a voluntary organization of 16 counties and municipalities. The organization provides a forum for local governments to discuss issues that cross their political boundaries, identify shared opportunities and challenges, and develop collaborative strategies for action.
<b>Pikes Peak Waterways (PPW)</b>	PPW is a non-profit organization formed to advocate for and help advance the restoration and rehabilitation of Fountain Creek. The group is passionate about moving this project forward.



The COS Creek Plan utilizes storm water and flood risk management to maintain and restore the natural function of the Fountain and Monument creeks throughout the watershed. Overall, the plan recommends watershed restoration through reestablishing functioning floodplains throughout the watershed; improving neighborhood connections and expanding the trail network, and encourage redevelopment oriented towards the creek. The COS Creek Plan identified short-, mid-, and long-term projects in the next twenty (20) years. This project was identified as a short-term project to be constructed within five (5) years of COS Creek Plan implementation.

### Plan Development and Stakeholder Support

The City and PPW have a formal collaboration agreement to partner on the Project. The City will hire design, engineering and construction teams. PPW will continue the long-standing relationship of providing project input, convening stakeholders, and conducting outreach to the community. Please see **Appendix E – Collaborative Agreement** from the three entities.

The COS Creek Plan and this Project has undergone extensive and diverse stakeholder coordination and communication, as is evidenced by the diversity and depth of organizations providing letters of support. The Project enjoys tremendous local and regional support, as evidenced by the letters of support attached to this application. Outreach to key community stakeholders has been extensive over the past two years and builds upon previous plans and studies going back many decades.

Planning meetings and stakeholder engagement for the COS Creek Plan began in November 2020 and has continued to date. The stakeholder list is now over 100 people and includes individuals and organizations that will have a direct or indirect impact on the creek plan project (**Appendix B**). The stakeholder engagement provided the framework for the creek plan goals, design features and alternatives, design criteria and standards, and shaped a decision matrix.

**Table 2. Key Supporting Organizations**

COS Creek Plan Supporting Organizations		
◆ Aiken Audubon	◆ <b>Great Outdoors Colorado</b>	◆ Past Greenway Fund Board members Pikes Peak Community Foundation
◆ Bloom Foundation	Historic Preservation Alliance	
◆ Colorado College	◆ Innovative Conservation Solutions	◆ Pikes Peak Outdoor Recreation Alliance
◆ Colorado Springs Chamber and Economic Development	◆ <b>Lane Foundation</b> Legacy Institute	◆ Pikes Peak Real Estate Foundation
◆ Colorado Water Trust	◆ Nature Conservancy	◆ Trails and Open Space Coalition
◆ Development Authority	◆ Norwood Development Group	◆ Trout Unlimited
◆ Downtown Partnership and Downtown	◆ Palmer Land Conservancy	◆ Visit Colorado Springs
◆ Fountain Creek Watershed District	◆ Park Union Metro District	



Guided by the collaborative agreement, an oversight committee consisting of key stakeholders for the project area meets at least once a month to discuss project status. Collaboration with neighborhood groups, existing stakeholders, and the larger community will help hone and refine the specific design criteria and standards for this important project. Planned outreach to includes periodic newsletters, public meetings, and a project website.

The Mill Street neighborhood, adjacent to the project area, has been working with the City of Colorado Springs on a neighborhood revitalization plan. This neighborhood is historically a working-class area that has been marked with low property values, high numbers of rentals, and increased crime. This neighborhood has been engaged in the discussions of the proposed creek revitalization to date.

At the southern edge of this project area near Shooks Run, Dorchester Park attracts a large urban transient population, with accompanying social service and homeless service provider organizations. These providers are stakeholders as well in the creek plan revitalization process and have been actively engaged throughout this process.

## Evaluation Criterion C—Ability to Meet Program Requirements

### P Project Budget

The full cost of the Project is estimated at \$533,500 (**Table 3**), of which the City is requesting \$400,000 from the Planning & Project Design funding program. The City is committed to provide \$133,000, or 25% from the Stormwater Enterprise Funds. Please see Budget Cost Narrative for additional budget detail.

**Table 3. Estimated Costs**

Fountain Creek Channel Stabilization Design	
Item	Total
Preliminary Engineering and Design	\$458,000
Stakeholder Engagement & Public Outreach	\$75,000
<b>Project Total</b>	<b>\$533,000</b>

The Planning & Project funding will bring the project to 60% design and conduct public outreach and engagement. Project costs were developed using recent City of Colorado Springs channel and storm drain improvement project unit costs and construction items identified in conceptual design. The project is currently not receiving other federal assistance. The City has applied for funding for this project from the US Army Corps of Engineers (USACE) funding opportunities but decisions have not been made on this program.

### Project Schedule

The Project is prepared to commence study and design upon contract signing. If awarded, the City is prepared to submit the required documentation for the implementation of the Project,



including financial reports, interim performance reports, and a final performance report. As a final package, the City will submit study and design activities resulting in a 60% design package and permitting and compliance. The Project is scheduled to initiate upon announcement of award, and to be completed by 4<sup>th</sup> Quarter 2026, in keeping with the requirements of the PDP Program (Table 4).

Table 4. Project Schedule

FOUNTAIN CREEK PROJECT WORK PLAN								
	2025				2026			
	Q1	Q2	Q3	Q4	Q1	Q2	Q3	Q4
Phase 1								
Notification of Grant Award	★							
Design Consultant Selected	■							
Contracting		■						
Design Kick-off Meeting		◆						
Data Collection		■						
H&H Analysis and Permitting		■						
Preliminary Design		■						
Public Outreach		■		■		■		
Grant Close Out								★

### Prior Planning Work

The [COS Creek Plan](#) provided the impetus of planning for this project, and the “Conceptual Evaluation of the Potential Flood Risk Reduction and Aquatic Resource Restoration” (see **Appendix C**) provided preliminary flood risk reduction results. Previous engineering and construction work along the project corridor has been conducted on an individual project basis but do not directly support implementation of this project. The conceptual evaluation prepared a preliminary HEC-RAS model for the existing corridor with conceptual improvements. Existing models and data for the area include floodplain models from FEMA, topographic LiDAR data, water quality characterization studies and data from USGS, and demographics and economic data within the City’s [Mill Street Neighborhood Plan \(2019\)](#) and Experience Downtown Colorado Springs (2016) plan. Please refer to **Appendix B** for full list of relevant plans and summaries of studies.

### Project Staff

Colorado Springs has the capacity and competency to implement the project as described. The following staff members will be responsible for implementation:

#### Grants Manager - Jennifer Vance

*Department of Finance, City of Colorado Springs*

Jennifer has been the Grants Manager for the City of Colorado Springs since 2014 and has 15 total years of experience. In this capacity she has overseen the grant making activities of all city departments including grant management and federal grant expenditures. In the most recent three fiscal years, the City, under Jennifer’s leadership, has had zero negative findings in their annual single audits. Jennifer’s role on this project will be grant compliance and administration.

#### Principal – Timothy Biolchini

*SW CIP Program Manager, City of Colorado Springs - Stormwater Enterprise*

Timothy has been a Project Coordinator/Program Manager for the City of Colorado Springs since 2016 and has 30 total years of experience. In this capacity, he has overseen design and



construction projects with respect to stormwater improvement projects. He has overseen projects as a PM from concept all the way through closeout of construction. He understands the processes and steps needed to carry a project to completion while staying under budget and within the project timeline. Many of these projects have included federal funding from various agencies.

**Project Manager – Adam Copper**

*City of Colorado Springs – Stormwater Enterprise*

Adam has been a Project Manager for the City of Colorado Springs since 2015 and has 19 total years of experience. In this capacity he has overseen design and construction projects with respect to stormwater improvement projects. He has designed projects for construction and has overseen projects as a PM from concept all the way through closeout of construction. He understands the processes and steps needed to carry a project to completion while staying under budget and within the project timeline. Many of these projects have included federal funding from various agencies.

**Technical Engineering Support - Beau Thompson**

*City of Colorado Springs – Stormwater Enterprise*

Beau has been a Project Manager for the City of Colorado Springs since 2014 and has 11 total years of experience. In this capacity he has overseen design and construction projects with respect to stormwater improvement projects. He has designed projects for construction and has overseen projects as a PM from concept all the way through closeout of construction. He understands the processes and steps needed to carry a project to completion while staying under budget and within the project timeline.

**Project Implementation & Maintenance**

Staff are pursuing funds to implement this project, and existing policies at the City are sufficient to support study, design, service procurement, permit research, and risk mitigation development. The maintenance of the corridor will be covered by the City’s operations and maintenance program, and maintenance will be performed in accordance with its municipal separate storm sewer systems (MS4) permit.

It is unlikely that maintenance expenses such as trash clean up and invasive species periodic removal will be reduced following the implementation of the Project. These costs are currently jointly shared by the City and CSU. The City has worked with the local district of the Army Corps of Engineers to address aquatic ecosystem issues along the Fountain Creek reach. This grant would help advance progress on that plan. Funding would also allow the City to deploy resources elsewhere.

**Evaluation Criterion D—Presidential and Department of the Interior Priorities**

**Sub-criterion No. D1. Climate Change**

Within the project area is a parcel of land belonging to the decommissioned Drake Power plant, owned by CSU that extends over the creek. Decommissioning the Drake coal fired power plant is





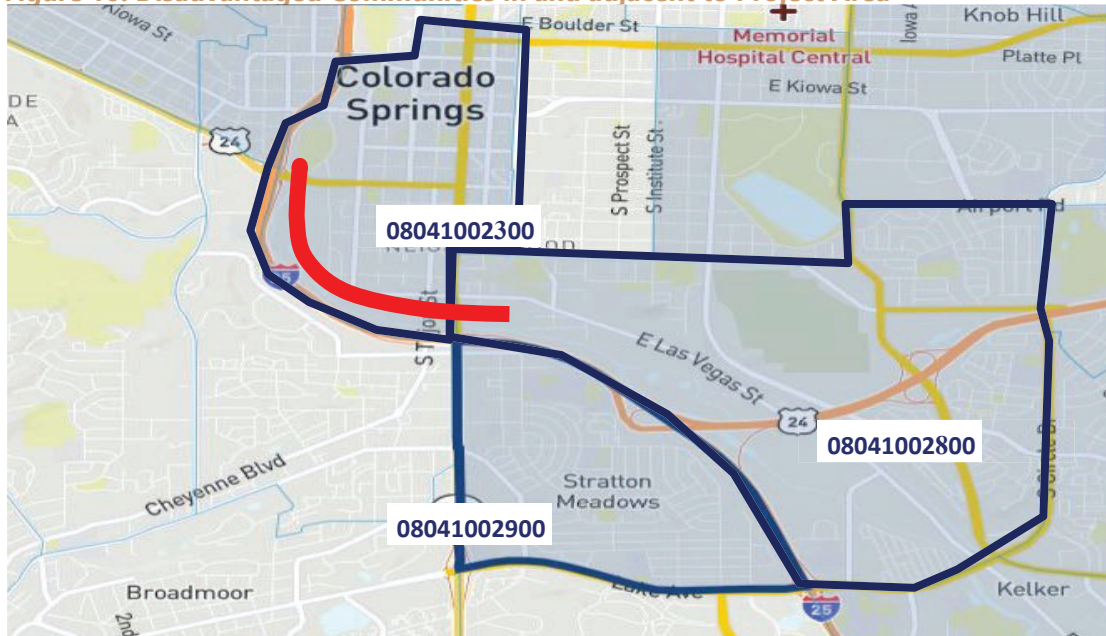
a huge step for the City to decrease air and water pollution and to help combat global climate change.

The partnership with CSU will benefit this project by no longer operating as an active coal-fired power plant, Fountain Creek will have less power-generation-related pollution, thereby facilitating efforts to restore aquatic ecosystems along the reach. Additionally, CSU is exploring options for remediation of the site, which will reduce soil contaminants, including creek-based contaminants. Finally, the design team will incorporate plans for the Drake site into the creek restoration plans, which is why the Colorado Springs Utility is a partner on this application and has included a letter of support.

### Sub-criterion No. D2. Disadvantaged or Underserved Communities

As iterated in Criterion A, this project provides community health and public safety benefits and supports economic vitality within and around the project area. While this project is focused on the reach itself, it is located in or adjacent to several communities identified as historically disadvantaged in the Council on Environmental Quality’s Climate and Economic Justice Screening Tool (Figure 10).

Figure 10. Disadvantaged Communities in and adjacent to Project Area



Source: Council on Environmental Quality Climate and Economic Justice Screening Tool.

Tract 08041002300, located at the north end of the project area, is one of the most disadvantaged communities in Colorado Springs. It ranks in the 71st percentile for households living at or above 200% of the federal poverty limit, and 91st percentile of having toxic concentrations from wastewater discharges within the creek. It is also ranked in the 74th percentile for flood risk, in the 88th percentile of projected risk to properties from wildfire from fire fuels, weather, humans, and fire movement in 30 years.



A portion of this tract is identified as the Mill Street Neighborhood, an historic and diverse working-class neighborhood impacted over many decades by the degraded creek corridor and the presence of the recently decommissioned Drake Power Plant. Improving the creek corridor would directly benefit this neighborhood and bring restorative environmental justice, as identified in the City's [Mill Street Neighborhood Plan](#).

Tract 08041002800, located at the south end of the project area, is also identified as disadvantaged due to rankings of 64th percentile for households living in poverty, 93rd percentile for unemployment and 86th percentile for wastewater discharge.

Over half of residents live alone and nearly 65% rent. There are high rates of diagnosed depression (27% vs. 19% regionally), poor health (29% vs. 14% regionally) and diabetes (13% vs. 8% nationally). There is a large senior population with 15.8% over the age of 65 vs. 11.3% regionally. From 2013-2017, arrests for non-violent crime in the area increased by 44%, while they decreased by 6% city-wide. Violent crime arrests nearly tripled in Mill Street. Between 2014 and 2017, calls for service at Dorchester Park more than doubled.

While Tract 08041002900 is not in the project area, its adjacent location indicates that the project will provide benefit to the residents of this community, which is also identified as disadvantaged due to the high level of Poverty (80th percentile), low median income (92nd percentile) and percent of people ages 25 years or older whose high school education is less than a high school diploma (12%).

At the south end of the project area at the confluence of Fountain Creek and Shooks Run, the City has outlined plans for developing affordable housing. In conjunction with this effort, the City also applied for and received brownfields clean up general grant funding. The focus of this effort is the Dorchester Park and the old KOA property at the northwest corner of Shooks Run and Fountain Creek. The City has also proposed redevelopment in neighborhoods around the creek including a rescue mission, and transitional housing to provide alternatives to those who currently camp along the creek.

This project provides community health and public safety benefits and support economic vitality within and around the project area. The project will improve water quality leading to significant reductions in pollutants transported by Fountain Creek. The project will also provide several areas for outdoor recreation, along with walking and running paths, bike paths, and specific areas for interaction with water. These opportunities will encourage citizens to play, exercise, engage in community, and enjoy the natural environment. A 2022 study on the potential economic impact of the proposed restoration (**Appendix D**) estimates the improvement will attract an additional 125,820 visitors and 36,700 additional visit-days after the project is implemented.

Currently the reach is isolated and cut off from the nearby neighborhoods by industrial development, the decommissioned Drake Power Plant, and outdated infrastructure. The isolation has led to a number of encampments along the reach by those experiencing homelessness. The resulting human-generated pollution and safety concerns have inhibited enjoyment of the creek



by the residents of the nearby neighborhoods. It is anticipated that additional and frequent access to the creek will reduce the isolation and in turn reduce the transient population.

### Sub-criterion No. D3. Tribal Benefits

Pikes Peak Waterways has entered into a contract with Sweet Grass Consulting to gather information from Indigenous knowledge holders through 15 to 20 interviews pertaining to the ecosystem, socio-economics, and astrology associated with various tribes. Additionally, a cultural resource study and tribal consultation will entail working with local museums, the City Archaeologist and conducting an Archaeological Survey. An Advisory Council consisting of volunteer Indigenous individuals will be created. This council will meet approximately six times. To ensure ongoing and lasting engagement with the tribal community, a memorandum of understanding (MOU) will be developed between stakeholders and the Indigenous community. This MOU will serve as a partnership moving forward on further creek revitalization efforts.

### Evaluation Criterion E— Nexus to Reclamation

While the City does not have any contractual connections with Reclamation (e.g., water service, repayment or O&M contract with Reclamation or Reclamation contractor), this project is located within the Arkansas River basin and can improve watershed health within the same basin as the Pueblo Dam and the Fryingpan-Arkansas Project. Fountain Creek is a major tributary to the Arkansas River basin. The project area lies in the heart of Colorado Springs and just downstream of the confluence of Fountain Creek and Monument Creek

## Other information

### Required Permits or Approvals

The following permits and approvals will be necessary for the completion of the construction of the project. During the planning and design phase, the City will continue to work with the pertinent agencies and will have all the required permits and approvals secured prior to the construction phase.

**Table 5. Required Permits and Status**

	Permit or Approval	Approving Agency
<b>USACE</b>	• NEPA	
	• Section 106	
	• Historic	
	• 404 permit	US Fish and Wildlife
	• Army Corps Permit/404 Permit	USACE
	• CDOT Right of way	CDOT
<b>Local Permits</b>	<b>Colorado Springs permits</b>	
	• CHPHE construction permit	
	• Water permit	
	• Grading and Erosion Controls	
	• Floodplain Administrator	Regional Building Department



## Environmental and Cultural Resources Compliance

The City will follow the NEPA process and the requirements of the National Historic Preservation Act as appropriate for the Project. The City will be in compliance with all environmental and cultural resource requirements. The design and planning work will mitigate anticipated impact to the surrounding environment.

Additionally, the project design will ensure that animal habitats are protected, and mitigation steps will be taken ensure species are protected during construction.

There are no wetlands or other surface waters inside the project boundaries that potentially fall under CWA jurisdiction as “Waters of the United States”. The proposed project will not result in any modification of or effects to, individual features of an irrigation system.

The Colorado Springs water delivery system was first constructed in 1886, with subsequent refinements and improvements. The Project area was extensively developed in the 1950’s and 1960’s in response to the burgeoning city. The Stone Pavilion in Dorchester Park, while not listed on the National Register of Historic Places, is of historic value to the community (**Figure 11**). It will not be affected by the Project and may even have improved access by removing adjacent embankments. There are no known archeological sites in the proposed project area.

The Project will have a positive effect on the low income and minority populations living within and adjacent to the project area. Project partners are working with local tribal leaders to ensure that the Project will not limit access to, and the ceremonial use of, Indian sacred sites or result in other negative impacts on tribal lands. Additionally, the City has identified a number of noxious weeds and non-native invasive species. Re-seeding of native and non-invasive species and the intentional removal of the noxious weeds and non-native species will also benefit recreational and cultural users of the project area.

## Overlap or Duplication of Effort Statement

There is no overlap between the Project and any other active or anticipated proposals or projects in terms of activities, costs, or commitment of key personnel.

## Conflict of Interest Disclosure Statement

No actual or potential conflict of interest exists at the time of the submission of this application for the applicant and its partners.

**Figure 11. Dorchester Park Stone Pavilion**



Source: [KRDO](#)



## Appendices

## **Appendix F - Letters of Support**

### **Project Partners**

1. Colorado Springs Utilities
2. Fountain Creek Watershed Flood Control and Greenway District

### **Project Supporters**

1. Aiken Audubon
2. Colorado Parks and Wildlife
3. Colorado Springs Chamber and Economic Development Corporation
4. Colorado Springs Parks, Recreation and Cultural Services
5. Downtown Partnership
6. El Pomar Foundation
7. Lane Foundation
8. Norwood Development Group
9. Palmer Land Conservancy
10. Pikes Peak Outdoor Recreation Alliance
11. Pikes Peak Real Estate Foundation
12. Pikes Peak Regional Building Department
13. The Nature Conservancy
14. Trails and Open Space Coalition
15. United States Geological Services
16. University of Colorado Colorado Springs Development Corp.
17. Visit Colorado Springs
18. Weidner Apartment Homes



Colorado Springs Utilities

*It's how we're all connected*

Tracy Stone-Manning  
Director, Bureau of Land Management  
1849 C Street NW  
Washington, DC 20240

January 24, 2024

Dear Director Stone-Manning,

Colorado Springs Utilities expresses enthusiastic support of the Colorado Springs 2024 WaterSMART Aquatic Ecosystem Restoration Project (AERP) application for the **Fountain Creek Restoration Project**.

Aquatic habitat restoration is essential to restore the health and vitality of Fountain Creek, which is approximately 75 miles long with a tributary area of over 900 square miles. The WaterSMART AERP design funding is critical to providing support for a highly degraded stretch of Fountain Creek. The reach is significantly altered from its historic condition due to urban development causing the reach to be confined with no floodplain terracing. The natural habitat is deteriorated, and most of the natural wetlands are limited and have been replaced mostly by invasive species. Design work will be used to:

1. Improve the flood plains and reintroduce stream sinuosity in key areas.
2. Re-establish floodplain terraces to create a range of native plant communities and wildlife habitats, while allowing for more diverse and extensive passive- and nature-based public recreation uses.
3. Construct several grade control structures which will be designed to allow for fish passage and restore areas of healthy wetland, riparian, and upland habitat with greatly improved conditions for thriving wildlife the entire length of the project.

Colorado Springs Utilities respectfully requests that the Bureau of Land Management consider the importance of these improvements and urges your favorable consideration of the application.

Sincerely,

Travas Deal  
Chief Executive Officer  
Colorado Springs Utilities

121 S. Tejon Street  
Colorado Springs  
Colorado 80947-0954

Phone 719.448.8000  
csu.org.



**PO Box 8100 Colorado Springs, CO 80933**

Tracy Stone-Manning  
Director, Bureau of Land Management  
1849 C Street NW  
Washington, DC 20240

January 24, 2024

Dear Director Stone-Manning,

I am writing on behalf of the Fountain Creek Watershed Flood Control and Greenway District to express our support of the Colorado Springs 2024 WaterSMART Aquatic Ecosystem Restoration Project (AERP) application for the **Fountain Creek Restoration Project**.

When it comes to protecting and enhancing the health of our home watershed, an effort such as this can have lasting positive impacts both locally in the project area as well as downstream. The changes resulting from development, post-fire conditions, increases in runoff volumes, and increasing water quality concerns are just a few of the challenges we are working to mitigate. From recreational users along the riparian corridors to producers along Fountain Creek to the animals that call it home, this project has great potential to benefit creek users - both humans and wildlife. The project goals around restoring floodplain connections, modeling natural processes, and enhancing recreation are in line with the Fountain Creek Watershed District's initiatives.

Aquatic habitat restoration is essential to restore the health and vitality of Fountain Creek, which is approximately 75 miles long and is fed by a tributary area of over 900 square miles. The WaterSMART AERP design funding is critical to providing support for a highly degraded stretch of Fountain Creek. The reach is significantly altered from its historic condition due to urban development along its length. The reach is highly confined with no floodplain terracing, the natural habitat is deteriorated, and the majority of the natural wetlands are destroyed and have been replaced mostly by invasive species. Design work will be used to:

1. Improve the flood plains and reintroduce stream sinuosity in key areas.
2. Re-establish floodplain terraces to create a range of native plant communities and wildlife habitats, while allowing for more diverse and extensive passive- and nature-based public recreation uses.
3. Construct several grade control structures which will be designed to allow for fish passage and restore areas of healthy wetland, riparian, and upland habitat with greatly improved conditions for thriving wildlife the entire length of the project.

This design work is the critical next step in realizing the long-term vision for the creek as articulated in the COS Creek Plan, a community-wide long-range planning document that incorporates the values and goals of numerous organizations, neighborhoods and local government representatives.

The Fountain Creek Watershed District respectfully requests that the Bureau of Land Management consider the importance of these improvements and urges your favorable consideration of the application.

Sincerely,

A handwritten signature in black ink that reads "Allison Schuch". The signature is fluid and cursive, with a long horizontal flourish extending to the right.

Allison Schuch, Executive Director  
Fountain Creek Watershed  
Flood Control and Greenway District  
[fountainckdist@gmail.com](mailto:fountainckdist@gmail.com)  
719.650.7474



Aiken Audubon Society  
330 E Costilla St., Box 79  
Colorado Springs, CO 80903  
[AikenAudubon@Gmail.com](mailto:AikenAudubon@Gmail.com)  
<https://www.aikenaudubon.com>

Tracy Stone-Manning

Director, Bureau of Land Management

1849 C Street NW

Washington, DC 20240

January 24, 2024

Dear Director Stone-Manning,

I am writing on behalf of Aiken Audubon to express our support of the Colorado Springs 2024 WaterSMART Aquatic Ecosystem Restoration Project (AERP) application for the Fountain Creek Restoration Project

As an organization which is gravely concerned with birds and their habitat, efforts to improve our waterways are of great importance to us. Bird populations in North America have decreased over 33% in the last 50 years, much of it due to the loss of habitat. Riparian habitat in particular has diminished – and continues to diminish - due to rapid growth and development in our region.

The EPA has stated that “riparian areas comprise less than one percent of the land area in most western states, yet up to 80 percent of all wildlife species in this region of the country are dependent upon riparian areas for at least part of their life cycles.”

If we are to maintain the health of our bird populations, any and all efforts to restore and revegetate our riparian areas should be prioritized.

Aquatic habitat restoration is essential to the health and vitality of Fountain Creek, which is approximately 75 miles long and is fed by a tributary area of over 900 square miles. The WaterSMART AERP design funding is critical to providing support for a highly degraded stretch of Fountain Creek. The reach is with no floodplain terracing, the natural habitat is deteriorated, and the majority of the natural wetlands are destroyed and have been replaced mostly by invasive species. Design work will be used to:

1. Improve the significantly altered from its historic condition due to urban development along its length. The reach is highly confined flood plains and reintroduce stream sinuosity in key areas.
2. Re-establish floodplain terraces to create a range of native plant communities and wildlife habitats, while allowing for more diverse and extensive passive- and nature-based public recreation uses.

3. Construct several grade control structures which will be designed to allow for fish passage and restore areas of healthy wetland, riparian, and upland habitat with greatly improved conditions for thriving wildlife the entire length of the project.

This design work is the critical next step in realizing the long-term vision for the creek as articulated in the COS Creek Plan, a community-wide long-range planning document that incorporates the values and goals of numerous organizations, neighborhoods and local government representatives.

Aiken Audubon respectfully requests that the Bureau of Land Management consider the importance of these improvements and urges your favorable consideration of the application.

Sincerely,

Linda Hodges  
Conservation Chair  
Aiken Audubon

Tracy Stone-Manning  
Director, Bureau of Land Management  
1849 C Street NW  
Washington, DC 20240

January 17, 2024

Dear Director Stone-Manning,

I am writing on behalf of the Colorado Springs Chamber & Economic Development Corporation (EDC) to express our enthusiastic support for N.E.S. Inc and the Colorado Springs 2024 WaterSMART Aquatic Ecosystem Restoration Project (AERP) application for the Fountain Creek Restoration Project.

We firmly believe this initiative will play a pivotal role in revitalizing the 'front door' to our downtown area. By rehabilitating this area, the project will enhance the overall appeal and accessibility, creating a welcoming gateway that fosters community engagement and drives economic prosperity. This endeavor has the potential to attract a diverse range of enterprises, contributing to the economic vitality of our community. We believe this project aligns with our goals for a thriving and dynamic city and are confident it will have a lasting impact on our community's growth.

Aquatic habitat restoration is essential to restore the health and vitality of Fountain Creek, which is approximately 75 miles long and fed by a tributary of over 900 square miles. The WaterSMART AERP design funding is critical to providing support for a highly degraded stretch of Fountain Creek. The reach is significantly altered from its historic condition due to urban development along its length. The reach is highly confined with no floodplain terracing, the natural habitat is deteriorated, and the majority of natural wetlands are destroyed and have been replaced by invasive species. Design work will be used to:

1. Improve the flood plains and reintroduce stream sinuosity in key areas.
2. Re-establish floodplain terraces to create a range of native plant communities and wildlife habitats, while allowing for more diverse and extensive passive- and nature-based public recreation uses.
3. Construct several grade control structures which will be designed to allow for fish passage and restore areas of healthy wetland, riparian, and upland habitat with greatly improved conditions for thriving wildlife the entire length of the project.

This design work is the critical next step in realizing the long-term vision for the creek as articulated in the COS Creek Plan, a community-wide long-range planning document that incorporates the values and goals of numerous organizations, neighborhoods, and local government representatives.

Colorado Springs Chamber & EDC respectfully requests that the Bureau of Land Management consider the importance of these improvements and urges your favorable consideration of the application.

Sincerely,



**Johnna Reeder Kleymeyer**  
President & CEO

January 19, 2024

Tracy Stone-Manning  
Director, Bureau of Land Management  
1849 C Street NW  
Washington, DC 20240

**RE: 2024 WaterSMART Aquatic Ecosystem Restoration Project (AERP) application for the Fountain Creek Restoration Project, Colorado Springs, CO.**

Dear Director Stone-Manning,

I am writing on behalf of Colorado Parks and Wildlife (CPW) to express CPW's support of the Colorado Springs 2024 WaterSMART Aquatic Ecosystem Restoration Project (AERP) application for the Fountain Creek Restoration Project.

This project is well aligned with CPW's mission to protect water quality, water quantity, recreation and fish and wildlife habitat. This locally-driven watershed restoration effort provides a framework for maintaining healthy stream systems and encourages the protection and enhancement of riparian and aquatic habitat for wildlife, birds and fish. While riparian areas and wetlands comprise only 2% of our landscape in Colorado they are used by more than 75% of our wildlife species.

Aquatic habitat restoration is essential to restore the health and vitality of Fountain Creek, which is approximately 75 miles long and is fed by a tributary area of over 900 square miles. The WaterSMART AERP design funding is critical to providing support for a highly degraded stretch of Fountain Creek. The reach is significantly altered from its historic condition due to urban development along its length. The reach is highly confined with no floodplain terracing, the natural habitat is deteriorated, and the majority of the natural wetlands are destroyed and have been replaced mostly by invasive species. Design work will be used to:

1. Improve the flood plains and reintroduce stream sinuosity in key areas.
2. Re-establish floodplain terraces to create a range of native plant communities and wildlife habitats, while allowing for more diverse and extensive passive- and nature-based public recreation uses.
3. Construct several grade control structures which will be designed to allow for fish passage and restore areas of healthy wetland, riparian, and upland habitat with

|

greatly improved conditions for thriving wildlife the entire length of the project.

This design work is the critical next step in realizing the long-term vision for the creek as articulated in the COS Creek Plan, a community-wide long-range planning document that incorporates the values and goals of numerous organizations, neighborhoods and local government representatives. CPW looks forward to being involved in reviewing preliminary designs of this project.

CPW respectfully requests that the Bureau of Land Management consider the importance of these improvements and urges your favorable consideration of the application.

Sincerely,

A handwritten signature in black ink, appearing to read "P. Foutz", with a long horizontal flourish extending to the right.

Paul Foutz  
Senior Aquatic Biologist



## PARKS, RECREATION AND CULTURAL SERVICES

Tracy Stone-Manning  
Director, Bureau of Land Management  
1849 C Street NW  
Washington, DC 20240

January 24, 2024

Dear Director Stone-Manning,

I am writing on behalf of the City of Colorado Springs Parks, Recreation and Cultural Services (PRCS) Department in support of the Colorado Springs 2024 WaterSMART Aquatic Ecosystem Restoration Project (AERP) application for the **Fountain Creek Restoration Project**. Aquatic habitat restoration is essential to restore the health and vitality of Fountain Creek, which is approximately 75 miles long and is fed by a tributary area of over 900 square miles.

The PRCS Department enthusiastically supports this application as it is the critical next step in realizing the long-term vision for the creek as articulated in the COS Creek Plan, a community-wide long-range planning document that incorporates the values and goals of numerous organizations, neighborhoods, and local government representatives.

The WaterSMART AERP design funding is critical to providing support for this highly degraded stretch of Fountain Creek. The reach is significantly altered from its historic condition due to urban development along its length. The reach is highly confined with no floodplain terracing, the natural habitat is deteriorated, and most of the natural wetlands are destroyed and have been replaced mostly by invasive species. Design work will be used to:

1. Improve the flood plains and reintroduce stream sinuosity in key areas.
2. Re-establish floodplain terraces to create a range of native plant communities and wildlife habitats, while allowing for more diverse and extensive passive- and nature-based public recreation uses.
3. Construct several grade control structures which will be designed to allow for fish passage and Restore areas of healthy wetland, riparian, and upland habitat with greatly improved conditions for thriving wildlife the entire length of the project.

Restoration of the creek will enhance one of the most visited community parks in the City's parkland inventory and will also improve one of our most significant trails- the Pikes Peak Greenway Trail.

I respectfully request that the Bureau of Land Management consider the importance of these improvements. We urge your favorable consideration of the application.

Sincerely,

A handwritten signature in black ink that reads "Britt I. Haley". The signature is written in a cursive, flowing style.

Britt I. Haley

Director

Colorado Springs Parks Recreation and Cultural Services Department

Tracy Stone-Manning  
Director, Bureau of Land Management  
1849 C Street NW  
Washington, DC 20240

January 15, 2024

Dear Director Stone-Manning,

On behalf of Downtown Partnership of Colorado Springs, I extend our enthusiastic support of the Colorado Springs 2024 WaterSMART Aquatic Ecosystem Restoration Project (AERP) application for the Fountain Creek Restoration Project.

Downtown Partnership is the lead organization championing an economically and culturally thriving city center. The Fountain Creek Restoration Project has long been of keen interest and high priority to us, as the project holds catalytic potential for the re-envisioning of our vital waterways on the eastern edge of Downtown.

Aquatic habitat restoration is essential to restore the health and vitality of Fountain Creek, which is approximately 75 miles long and is fed by a tributary area of over 900 square miles. The WaterSMART AERP design funding is critical to providing support for a highly degraded stretch of Fountain Creek. The reach is significantly altered from its historic condition due to urban development along its length. The reach is highly confined with no floodplain terracing, the natural habitat is deteriorated, and the majority of the natural wetlands are destroyed. Design work will be used to:

- Improve the flood plains and reintroduce stream sinuosity in key areas.
- Re-establish floodplain terraces to create a range of native plant communities and wildlife habitats, while allowing for more diverse and extensive passive- and nature-based public recreation uses.
- Construct several grade control structures which will be designed to allow for fish passage and restore areas of healthy wetland, riparian, and upland habitat with greatly improved conditions for thriving wildlife along the entire length of the project.

This design work is the critical next step in realizing the long-term vision for the creek as articulated in the COS Creek Plan, a communitywide long-range planning document that incorporates the values and goals of numerous organizations, including ours.

Downtown Partnership respectfully requests that the Bureau of Land Management consider the importance of these improvements and urges your favorable consideration of the application.

Sincerely,



Susan Edmondson  
President & CEO

**KYLE H. HYBL**

President and Chief Executive Officer



January 17, 2024

Tracy Stone-Manning, Director  
Bureau of Land Management  
1849 C Street NW  
Washington, DC 20240

Dear Director Stone-Manning,

I am writing on behalf of El Pomar Foundation to express support of the Colorado Springs 2024 WaterSMART Aquatic Ecosystem Restoration Project (AERP) application for the **Fountain Creek Restoration Project**.

With our mission to enhance, encourage, and promote the current and future well-being of the people of Colorado, El Pomar believes this project can play an important role in the long-term health and welfare of Fountain Creek, and by extension of the community.

The creek is approximately 75 miles long, fed by a tributary area of over 900 square miles, and runs through the core of Colorado Springs. Design funding is critical to providing support for a highly degraded stretch, which has been altered due to urban development, deteriorating natural habitat, destroyed wetlands, and growth of invasive species.

The design work will facilitate projects such as flood plain improvements, re-establishment of native plant communities and wildlife habitats, public recreation uses, and grade control structures for thriving wildlife conditions. These initiatives will positively impact the long-range vision for the area as identified by many public, private, and neighborhood entities.

El Pomar Foundation respectfully encourages the Bureau of Land Management to consider the value of these improvements and provide favorable consideration of the Fountain Creek Restoration Project application.

Sincerely,

A handwritten signature in black ink, appearing to read "K. H. Hybl".

Kyle H. Hybl



JOHN AND MARGOT  
LANE FOUNDATION

Tracy Stone-Manning  
Director, Bureau of Land Management  
1849 C Street NW  
Washington, DC 20240

January 16, 2024

Dear Director Stone-Manning,

I am writing on behalf of the John and Margot Lane Foundation to express the foundation's strong support of the Colorado Springs 2024 WaterSMART Aquatic Ecosystem Restoration Project (AERP) application for the **Fountain Creek Restoration Project**.

As Colorado Springs continues to grow along the front range with Space Command and the microchip corridor, restoring the aquatic habitat of Fountain Creek (75 miles long and fed by a tributary area of over 900 square miles) becomes more and more critical. Supporting this confined and highly degraded stretch of Fountain Creek due to urban development will include improving the flood plains and reintroducing stream sinuosity in key areas. It will re-establish floodplain terraces to create a range of native plant communities and wildlife habitats while allowing for more diverse and extensive passive and nature-based public recreation uses. The project will also construct several grade control structures to allow for fish passage and healthy wetland, riparian, and upland habitats with greatly improved conditions for thriving wildlife.

This design work is *the* critical next step in realizing the long-term vision for the creek as articulated in the COS Creek Plan. This community-wide and long-range planning document incorporates the values and goals of many organizations, local government representatives, and neighborhoods in Colorado Springs.

The John and Margot Lane Foundation respectfully requests that the Bureau of Land Management consider a favorable decision regarding the application.

Sincerely,

Philip Lane  
Chairman and CEO  
John and Margot Lane Foundation



JOHN AND MARGOT  
LANE FOUNDATION

Tracy Stone-Manning  
Director, Bureau of Land Management  
1849 C Street NW  
Washington, DC 20240

January 16, 2024

Dear Director Stone-Manning,

I am writing on behalf of the John and Margot Lane Foundation to express the foundation's strong support of the Colorado Springs 2024 WaterSMART Aquatic Ecosystem Restoration Project (AERP) application for the **Fountain Creek Restoration Project**.

As Colorado Springs continues to grow along the front range with Space Command and the microchip corridor, restoring the aquatic habitat of Fountain Creek (75 miles long and fed by a tributary area of over 900 square miles) becomes more and more critical. Supporting this confined and highly degraded stretch of Fountain Creek due to urban development will include improving the flood plains and reintroducing stream sinuosity in key areas. It will re-establish floodplain terraces to create a range of native plant communities and wildlife habitats while allowing for more diverse and extensive passive and nature-based public recreation uses. The project will also construct several grade control structures to allow for fish passage and healthy wetland, riparian, and upland habitats with greatly improved conditions for thriving wildlife.

This design work is *the* critical next step in realizing the long-term vision for the creek as articulated in the COS Creek Plan. This community-wide and long-range planning document incorporates the values and goals of many organizations, local government representatives, and neighborhoods in Colorado Springs.

The John and Margot Lane Foundation respectfully requests that the Bureau of Land Management consider a favorable decision regarding the application.

Sincerely,

Anita Lane  
Board Member  
John and Margot Lane Foundation

# NORWOOD

January 24, 2024

## VIA EMAIL

Tracy Stone-Manning  
Director, Bureau of Land Management  
1849 C Street NW  
Washington, DC 20240

Dear Director Stone-Manning,

It is with great enthusiasm that we, on behalf of Norwood Development Group, write to endorse the Colorado Springs 2024 WaterSMART Aquatic Ecosystem Restoration Project (AERP) for the revitalization of Fountain Creek. As a full-service real estate development and asset management organization deeply rooted in Colorado Springs, Colorado, we recognize the profound impact that the AERP will have on our community, stakeholders, and the environment.

The Fountain Creek Restoration Project is not only a matter of environmental stewardship; it is also a critical step towards enhancing the quality of life for our visitors and residents while ensuring the sustainable development of our beloved city. As the creek flows through the heart of Colorado Springs, its health and connectivity directly influences the well-being of our people, wildlife, and the natural beauty that defines our region.

As Southern Colorado's largest privately-held Real Estate Development Company, our stakeholders and customers, ranging from local homeowners to businesses, anticipate substantial and long-lasting benefits from the project. Improved floodplain management and the reintroduction of natural stream dynamics will mitigate flood risks, which have historically affected property values, safety, and the aesthetic beauty of our primary waterway. The creation of native plant communities and wildlife habitats not only augments biodiversity but also presents new recreational opportunities, fostering a stronger connection between our citizens and the natural world.

Moreover, the project's vision aligns seamlessly with many of our community's strategic planning efforts, reflecting our collective aspirations for a future where urban development, recreation and ecological integrity coexist harmoniously.



# NORWOOD

We at Norwood Development Group are committed to this vision and are eager to see the transformative effects of the AERP come to fruition.

In conclusion, we respectfully urge the Bureau of Land Management to recognize the imperative nature of this project and to lend its favorable consideration to the application.

Together, we can forge a legacy of environmental resilience and community prosperity.

Sincerely,



**CHRISTOPHER S. JENKINS**  
President/CEO  
Norwood Development Group



**JEFFREY A. FINN**  
Senior Vice President  
Norwood Development Group





COLORADO SPRINGS ADDRESS  
102 S. Tejon, Ste 360  
Colorado Springs, CO 80903  
719-632-3236

PUEBLO ADDRESS  
121 W. City Center Dr, Ste 200D  
Pueblo, CO 81003  
719-941-9909

MAILING ADDRESS  
P.O. Box 1281  
Colorado Springs, CO 80901

Tracy Stone-Manning  
Director, Bureau of Land Management  
1849 C Street NW  
Washington, DC 20240

January 26, 2024

Dear Director Stone-Manning,

I am writing on behalf of Palmer Land Conservancy to express our enthusiastic support of the Colorado Springs 2024 WaterSMART Aquatic Ecosystem Restoration Project (AERP) application for the **Fountain Creek Restoration Project**.

Since 1977, Palmer Land Conservancy has been committed to meaningful, community-inspired land and water conservation efforts in the Pikes Peak region and throughout southern Colorado. We have conserved more than 140,000 acres of critical habitat, agricultural lands, scenic views, and parks and open spaces in partnership with government agencies, private landowners, and the public. We know well the value of Colorado Springs' waterways, and Fountain Creek in particular.

Aquatic habitat restoration is essential to restore the health and vitality of Fountain Creek, which is approximately 75 miles long and is fed by a tributary area of over 900 square miles. The WaterSMART AERP design funding is critical to providing support for a highly degraded stretch of Fountain Creek. The reach is significantly altered from its historic condition due to urban development along its length. The reach is highly confined with no floodplain terracing, the natural habitat is deteriorated, and the majority of the natural wetlands are destroyed and have been replaced mostly by invasive species. Design work will be used to:

1. Improve the flood plains and reintroduce stream sinuosity in key areas.
2. Re-establish floodplain terraces to create a range of native plant communities and wildlife habitats, while allowing for more diverse and extensive passive- and nature-based public recreation uses.
3. Construct several grade control structures which will be designed to allow for fish passage and restore areas of healthy wetland, riparian, and upland habitat with greatly improved conditions for thriving wildlife the entire length of the project.

This design work is the critical next step in realizing the long-term vision for the creek as articulated in the COS Creek Plan, a community-wide long-range planning document that incorporates the values and goals of numerous organizations, neighborhoods and local government representatives.

Palmer Land Conservancy respectfully requests that the Bureau of Land Management consider the importance of these improvements and urges your favorable consideration of the application.

Sincerely,

A handwritten signature in black ink, appearing to read "Rebecca Jewett". The signature is fluid and cursive, with the first name being more prominent than the last.

Rebecca Jewett  
President and CEO

Tracy Stone-Manning  
Director, Bureau of Land Management  
1849 C Street NW  
Washington, DC 20240



January 19, 2024

Dear Director Stone-Manning,

I am writing on behalf of the Pikes Peak Outdoor Recreation Alliance (PPORA) to express PPORA's enthusiastic support of the Colorado Springs 2024 WaterSMART Aquatic Ecosystem Restoration Project (AERP) application for the **Fountain Creek Restoration Project**. The proposed Project is a testament to the project partners' commitment to improving a vital, and under-activated ecosystem in the Colorado Springs community to benefit the natural environment and wildlife as well as the community.

PPORA is a collaborative of outdoor businesses, nonprofit organizations, and land managers working together to strengthen the outdoor recreation industry for the Pikes Peak region through leadership and collaboration. PPORA is excited to see our local waterway brought to its past glory through the thoughtful planning and design, informed by both expertise and public engagement, that the Fountain Creek Restoration Project brings. This Project will be a lasting investment that future generations of residents and visitors will enjoy.

The project partners have been participating in the Colorado Outdoor Regional Partnership that PPORA leads – the Outdoor Pikes Peak Initiative (OPPI), a collaborative effort aimed at advancing outdoor recreation priorities in balance with natural resource conservation priorities. The Fountain Creek Restoration Project aligns well with OPPI through restoring natural wetland and wildlife habitat, increased potential for recreation opportunities, and increasing the likelihood of the community to enjoy the space and receive the associated physical and mental benefits of time spent in nature.

Aquatic habitat restoration is essential to restore the health and vitality of Fountain Creek, which is approximately 75 miles long and is fed by a tributary area of over 900 square miles. The WaterSMART AERP design funding is critical to providing support for a highly degraded stretch of Fountain Creek. The reach is significantly altered from its historic condition due to urban development along its length. The reach is highly confined with no floodplain terracing, the natural habitat is deteriorated, and the majority of the natural wetlands are destroyed and have been replaced mostly by invasive species. Design work will be used to:

1. Improve the flood plains and reintroduce stream sinuosity in key areas.
2. Re-establish floodplain terraces to create a range of native plant communities and wildlife habitats, while allowing for more diverse and extensive passive- and nature-based public recreation uses.

3. Construct several grade control structures which will be designed to allow for fish passage and restore areas of healthy wetland, riparian, and upland habitat with greatly improved conditions for thriving wildlife the entire length of the project.

This design work is the critical next step in realizing the long-term vision for the creek as articulated in the COS Creek Plan, a community-wide long-range planning document that incorporates the values and goals of numerous organizations, neighborhoods and local government representatives.

PPORA respectfully requests that the Bureau of Land Management consider the importance of these improvements and urges your favorable consideration of the application.

Sincerely,

A handwritten signature in cursive script that reads "Becky Leinweber".

Becky Leinweber

Executive Director

Tracy Stone-Manning  
Director, Bureau of Land Management  
1849 C Street NW  
Washington, DC 20240

January 16, 2024

Dear Director Stone-Manning,

I am writing on behalf of the Pikes Peak Real Estate Foundation (PPREF) to express our enthusiastic support for the Colorado Springs 2024 WaterSMART Aquatic Ecosystem Restoration Project (AERP) application for the **Fountain Creek Restoration Project**.

PPREF is heavily invested in making our city more livable, affordable, and accessible. This project is a critical component to make our city's central core more attractive to affordable housing investment. The improvement of our Fountain Creek corridor will make it easier for us to provide accessible, high quality affordable housing for those that make our urban core vibrant.

The **WaterSMART AERP** design funding is critical to providing support for a highly degraded stretch of Fountain Creek. The reach is significantly altered from its historic condition due to urban development along its length. The reach is highly confined with no floodplain terracing, the natural habitat is deteriorated, and the majority of the natural wetlands are destroyed and have been replaced mostly by invasive species. Design work will be used to:

1. Improve the flood plains and reintroduce stream sinuosity in key areas.
2. Re-establish floodplain terraces to create a range of native plant communities and wildlife habitats, while allowing for more diverse and extensive passive- and nature-based public recreation uses.
3. Construct several grade control structures which will be designed to allow for fish passage and restore areas of healthy wetland, riparian, and upland habitat with greatly improved conditions for thriving wildlife the entire length of the project.

PPREF respectfully requests that the Bureau of Land Management consider the importance of these improvements and urges your favorable consideration of the application.

Sincerely,

Samuel Clark  
Executive Director, Pikes Peak Real Estate Foundation



May 17, 2024

Ms. Nickie McCann  
Water Resources and Planning Office  
Bureau of Reclamation  
P.O. Box 25007  
Denver Federal Center  
Denver CO 80225-0007

Dear Ms. McCann,,

I am writing on behalf of the Pikes Peak Regional Building Department (PPRBD) to express PPRBD's enthusiastic support of the Colorado Springs 2024 WaterSMART Planning and Project Design Grant application for the Fountain Creek Restoration Project.

The health and vitality of Fountain Creek is critical to the greater Colorado Springs area. The WaterSMART funding is critical to providing funding to design water management systems for a highly degraded stretch of Fountain Creek. The reach is significantly altered from its historic condition due to urban development along its length: the reach is highly confined with no floodplain terracing, the natural habitat is deteriorated, and the majority of the natural wetlands are destroyed and have been replaced mostly by invasive species. The proposed design will:

- Improve the flood plains and reintroduce stream sinuosity in key areas.
- Re-establish floodplain terraces to create a range of native plant communities and wildlife habitats, while allowing for more diverse and extensive passive- and nature-based public recreation uses.
- Develop design for future construction of grade control structures to allow for fish passage and restore areas of healthy wetland, riparian, and upland habitat with greatly improved conditions for thriving wildlife the entire length of the project.

This design work is the critical next step in realizing the long-term vision for the creek as articulated in the COS Creek Plan, a community-wide long-range planning document that incorporates the values and goals of numerous organizations, neighborhoods and local government representatives.

PPRBD respectfully requests that the Bureau of Reclamation consider the importance of these improvements and urge your favorable consideration of the application.

Sincerely,

**Keith Curtis, PE, CFM, LEED AP**  
Floodplain Administrator



The Nature Conservancy in Colorado  
2424 Spruce Street  
Boulder, CO 80302

tel (303) 444-2950  
fax (303) 444-2985  
[nature.org/colorado](http://nature.org/colorado)

Ms. Nickie McCann  
Water Resources and Panning Office  
Bureau of Reclamation  
PO Box 25007, Denver Federal Center  
Denver, CO 80225-0007

Dear Ms. McCann,

On behalf of The Nature Conservancy (TNC) in Colorado, I am writing to express my enthusiastic support for the Colorado Springs 2024 WaterSMART Aquatic Ecosystem Restoration Project (AERP) application for the **Fountain Creek Restoration Project**.

For decades, TNC has worked closely with community partners in the Colorado Springs area to protect grasslands and forests vital to the region's agricultural heritage, biodiversity, and community resilience. TNC recognizes Fountain Creek as central to the ecology, economy, and health of the region. Restoring Fountain Creek will support wildlife habitat and the local communities who depend on the creek for economic and recreational opportunities, as well as for their drinking water.

Fountain Creek is approximately 75 miles long and is fed by a tributary area of over 900 square miles. As we understand from our peers at Pikes Peak Waterways, the WaterSMART AERP design funding will return a highly degraded stretch of Fountain Creek—significantly altered from its historic condition due to urban development—to health and vitality. As an organization that also works to restore riparian corridors throughout the Colorado River Basin, all of us at TNC understand that the design phase is critical for a successful and effective river restoration project.

By investing in the design work of the Fountain Creek Restoration Project, you will help catalyze the long-term vision for the creek as articulated in the COS Creek Plan. The plan is a community-wide, long-range planning document that incorporates the values and goals of numerous organizations, neighborhoods, and local government representatives.

On behalf of TNC, I respectfully request that the Bureau of Land Management consider the importance of this project, and I urge you to favorably consider the application.

A handwritten signature in black ink, appearing to read "Carlos Fernández".

Carlos Fernández  
Colorado State Director

Cc: Doug Vilsack, Colorado State Director, BLM



702 E. Boulder St #200  
Colorado Springs, CO 80903  
719.633.6884  
[info@trailsandopenspaces.org](mailto:info@trailsandopenspaces.org)  
[www.trailsandopenspaces.org](http://www.trailsandopenspaces.org)

*We advocate for the creation and conservation of an interconnected network of trails, parks and open spaces across the Pikes Peak region.*

Ms. Nickie McCann  
Water Resources and Panning Office  
Bureau of Reclamation  
PO Box 25007, Denver Federal Center  
Denver, CO 80225-0007

January 16, 2024

Dear Ms. McCann,

As Executive Director of the Trails and Open Space Coalition, it is my pleasure to express enthusiastic support for the Colorado Springs 2024 WaterSMART Aquatic Ecosystem Restoration Project (AERP) application for the Fountain Creek Restoration Project,

We've been serving this region for 25 years and champion trail, park and open space projects. This project will provide our members, partners, residents and visitors with better access to our creeks via our extensive trail system. Popular parks along the creeks will become family destinations as a result of these improvements. Our rapidly growing population will be encouraged to connect with our creeks cultivating a respect for our waterways.

The health and vitality of Fountain Creek depends on restoring aquatic habitat. This is critical to the long-term sustainability of the 75-mile creek. Your funding will address a highly degraded stretch of the creek. Not unlike other urban waterways, urban development has significantly altered its course. The natural habitat has deteriorated and the majority of the natural wetlands are gone. Invasive species have taken over. Design work will do the following:

- Improve the flood plains and reintroduce stream sinuosity in key areas.
- Re-establish floodplain terraces to create a range of native plant communities and wildlife habitats. We are particularly pleased this will include passive and nature-based public recreation uses.
- Construct several grade control structures which will be designed to allow fish passage and restore areas of healthy wetland, riparian and upland habitat that will support more wildlife.

This is the critical next step in realizing the long-term vision for the creek as described in the COS Creek Plan. This Plan has created a great deal of excitement in our community as it reflects our values and hopes for the Creek and its potential as a recreation and economic driver.

The Trails and Open Space Coalition respectfully requests the Bureau of Land Management consider the critical nature of these improvements and urges your favorable consideration of this application.

Sincerely,

*Susan Davies*

Susan Davies, Executive Director  
Trails and Open Space Coalition



# United States Department of the Interior

U. S. GEOLOGICAL SURVEY  
Water Mission Area  
Colorado Water Science Center  
Box 25046 MS 415  
Denver Federal Center  
Denver, CO 80225

Tracy Stone-Manning  
Director, Bureau of Land Management  
1849 C Street NW  
Washington, DC 20240

January 24, 2024

Dear Director Stone-Manning,

I am writing on behalf of the United States Geological Survey (USGS) to express our enthusiastic support of the Colorado Springs 2024 WaterSMART Aquatic Ecosystem Restoration Project (AERP) application for the **Fountain Creek Restoration Project**.

Aquatic habitat restoration is essential to restore the health and vitality of Fountain Creek, which is approximately 75 miles long and is fed by a tributary area of over 900 square miles. The WaterSMART AERP design funding is critical to providing support for a highly degraded stretch of Fountain Creek. The reach is significantly altered from its historic condition due to urban development along its length. The reach is highly confined with no floodplain terracing, the natural habitat is deteriorated, and the majority of the natural wetlands are destroyed and have been replaced mostly by invasive species. Design work will be used to:

1. Improve the flood plains and reintroduce stream sinuosity in key areas.
2. Re-establish floodplain terraces to create a range of native plant communities and wildlife habitats, while allowing for more diverse and extensive passive- and nature-based public recreation uses.
3. Construct several grade control structures which will be designed to allow for fish passage and restore areas of healthy wetland, riparian, and upland habitat with greatly improved conditions for thriving wildlife the entire length of the project.

This design work is the critical next step in realizing the long-term vision for the creek as articulated in the COS Creek Plan, a community-wide long-range planning document that incorporates the values and goals of numerous organizations, neighborhoods and local government representatives.

The USGS respectfully requests that the Bureau of Land Management consider the importance of these improvements and urges your favorable consideration of the application.

Sincerely,

Andy Klakulak  
Supervisory Hydrologist  
Colorado Water Science Center  
Southeast Colorado Office - Pueblo, CO  
928-388-8964



University of Colorado  
Colorado Springs

**UCCS Development Corp.**  
Main Hall, Chancellor's Suite, 402G  
1420 Austin Bluffs Parkway  
Colorado Springs, CO 80918

Tracy Stone-Manning  
Director, Bureau of Land Management  
1849 C Street NW  
Washington, DC 20240

January 23, 2024

Dear Director Stone-Manning,

I am writing on behalf of the UCCS Development Corporation to express our enthusiastic support of the Colorado Springs 2024 WaterSMART Aquatic Ecosystem Restoration Project (AERP) application for the **Fountain Creek Restoration Project**.

As a 501(c)(3) organization dedicated to supporting and encouraging connections between the University and the Colorado Springs community, the Development Corporation supports the Fountain Creek Restoration Project as a way to utilize intellectual capital, create jobs, and promote healthy growth in the geographic area just south and west of our Colorado Springs campus.

Aquatic habitat restoration is essential to restore the health and vitality of Fountain Creek, which is approximately 75 miles long and is fed by a tributary area of over 900 square miles. The WaterSMART AERP design funding is critical to providing support for a highly degraded stretch of Fountain Creek. The reach is significantly altered from its historic condition due to urban development along its length. The reach is highly confined with no floodplain terracing, the natural habitat is deteriorated, and the majority of the natural wetlands are destroyed and have been replaced mostly by invasive species. Design work will be used to:

1. Improve the flood plains and reintroduce stream sinuosity in key areas.
2. Re-establish floodplain terraces to create a range of native plant communities and wildlife habitats, while allowing for more diverse and extensive passive- and nature-based public recreation uses.
3. Construct several grade control structures which will be designed to allow for fish passage and restore areas of healthy wetland, riparian, and upland habitat with greatly improved conditions for thriving wildlife the entire length of the project.

This design work is the critical next step in realizing the long-term vision for the creek as articulated in the COS Creek Plan, a community-wide long-range planning document that incorporates the values and goals of numerous organizations, neighborhoods and local government representatives.

The UCCS Development Corporation respectfully requests that the Bureau of Land Management consider the importance of these improvements and urges your favorable consideration of the application.

Sincerely,

William C. Lueck  
Executive Director / Chief Operating Officer



Tracy Stone-Manning  
Director, Bureau of Land Management  
1849 C Street NW  
Washington, DC 20240

January 24, 2024

Dear Director Stone-Manning,

I am writing on behalf of the Visit COS, aka, the Colorado Springs Convention and Visitors Bureau, to express our enthusiastic support of the Colorado Springs 2024 WaterSMART Aquatic Ecosystem Restoration Project (AERP) application for the **Fountain Creek Restoration Project**.

Visitors from around the world will take advantage of the Fountain Creek restoration project for years to come. Aquatic habitat restoration is essential to restore the health and vitality of Fountain Creek, which is approximately 75 miles long and is fed by a tributary area of over 900 square miles. The WaterSMART AERP design funding is critical to providing support for a highly degraded stretch of Fountain Creek. The reach is significantly altered from its historic condition due to urban development along its length. The reach is highly confined with no floodplain terracing, the natural habitat is deteriorated, and the majority of the natural wetlands are destroyed and have been replaced mostly by invasive species. Design work will be used to:

1. Improve the flood plains and reintroduce stream sinuosity in key areas.
2. Re-establish floodplain terraces to create a range of native plant communities and wildlife habitats, while allowing for more diverse and extensive passive- and nature-based public recreation uses.
3. Construct several grade control structures which will be designed to allow for fish passage and restore areas of healthy wetland, riparian, and upland habitat with greatly improved conditions for thriving wildlife the entire length of the project.

This design work is the critical next step in realizing the long-term vision for the creek as articulated in the COS Creek Plan, a community-wide long-range planning document that incorporates the values and goals of numerous organizations, neighborhoods and local government representatives.

Visit COS respectfully requests that the Bureau of Land Management consider the importance of these improvements and urges your favorable consideration of the application.

Sincerely,

Doug Price  
President and CEO  
VisitCOS



9757 NE Juanita Drive,  
Suite 300  
Kirkland, WA 98034  
[gregc@weidner.com](mailto:gregc@weidner.com)

January 18, 2024

Ms. Nickie McCann  
Water Resources and Panning Office  
Bureau of Reclamation  
PO Box 25007, Denver Federal Center  
Denver, CO 80225-0007

Dear Ms. McCann,

I am writing on behalf of Weidner Apartment Homes (Weidner) to express our enthusiastic support of the Colorado Springs 2024 WaterSMART Aquatic Ecosystem Restoration Project (AERP) application for the **Fountain Creek Restoration Project**.

The COS Creek Plan is a comprehensive project focusing on the future of the Fountain Creek Watershed in Colorado Springs, with particular attention to the segments of Monument and Fountain creeks near Downtown where Weidner is developing a significant mixed-use community of over 1,200 new housing units. The study area has recently been expanded to include the confluence of Fountain Creek and Shooks Run Creek (critical to the completion of the Legacy Loop project) where Weidner also owns property. Improved waterways and green spaces will greatly enhance the city's appeal and livability which in turn attracts more residents, businesses, and tourists to the area. Improvements to the creekways will also increase property values and encourage development (like ours) in adjacent areas. Additionally, the project will create jobs both during and after construction, which will boost local employment.

Aquatic habitat restoration is essential to restore the health and vitality of Fountain Creek, which is approximately 75 miles long and is fed by a tributary area of over 900 square miles. The WaterSMART AERP design funding is critical to providing support for a highly degraded stretch of Fountain Creek. The reach is significantly altered from its historic condition due to urban development along its length. The reach is highly confined with no floodplain terracing, the natural habitat is deteriorated, and the majority of the natural wetlands are destroyed and have been replaced mostly by invasive species. Design work will be used to:

1. Improve the flood plains and reintroduce stream sinuosity in key areas.

what MATTERS  
to YOU,  
MATTERS  
to US.

2. Re-establish floodplain terraces to create a range of native plant communities and wildlife habitats, while allowing for more diverse and extensive passive- and nature-based public recreation uses.
3. Construct several grade control structures which will be designed to allow for fish passage and restore areas of healthy wetland, riparian, and upland habitat with greatly improved conditions for thriving wildlife the entire length of the project.

This design work is the critical next step in realizing the long-term vision for the creek as articulated in the COS Creek Plan, a community-wide long-range planning document that incorporates the values and goals of numerous organizations, neighborhoods and local government representatives.

Weidner Apartment Homes respectfully requests that the Bureau of Land Management consider the importance of these improvements and urges your favorable consideration of the application.

Sincerely,

*GK Cerbana*

Gregory K. Cerbana  
Vice President – Public Relations and Govt Affairs



## WaterSMART Planning and Project Design Grants



WaterSMART Project Design Program Projects For Fiscal Year 2023 and 2024  
Notice of Funding Opportunity No. R23AS00109

# FOUNTAIN CREEK RESTORATION PROJECT

## Cost Estimate Narrative

### Applicant

City of Colorado Springs  
Stormwater Enterprise  
30 S. Nevada Ave., Suite 401  
Colorado Springs, CO 80901

### Project Manager

Timothy Biolchini, PE  
SW CIP Program Manager  
(719) 385-5612 office  
Timothy.Biolchini@coloradosprings.gov

May 13, 2024





## Project Budget

The full cost of the Project is estimated at \$533,500 of which the City is requesting \$400,000 from the Water SMART Project Design funding program (**Table 1**). The City is committed to provide \$133,000, or 25% from the Stormwater Enterprise Funds.

The Stormwater Enterprise is an enterprise of the City that collects stormwater fees as part of monthly utility bills which are dedicated to stormwater control, maintaining facilities, and restoring watersheds. Upon award of the Planning & Project Design grant, the required matching funds will be allocated to the Project from the Stormwater Enterprise accounts and cannot be used on any other project. The allocation of the funds to the Project is an administrative action and does not require City Council approval. The Stormwater Enterprise is only authorized to spend funding on stormwater projects. The City is not seeking any additional funding for this project.

**Table 1. Estimated Costs**

Item	Total
Preliminary Engineering and Design (through 60%)	\$458,000
Stakeholder Engagement & Public Outreach	\$75,000
Project Total	\$533,000

The WaterSMART PDP funding will bring the project to 60% design and conduct public outreach and engagement. Project costs were developed using recent City of Colorado Springs channel and storm drain improvement project unit costs and construction items identified in conceptual design. The project is currently not receiving other federal assistance. The City has applied for funding for this project from the US Army Corps of Engineers (USACE) funding opportunities but decisions have not been made on this program.

## Pre-Award

The City is not requesting reimbursement for any pre-award activities cost nor are any costs included in the Grant cost estimate.

## Post Award

### Task 1: Grant Management

Internal Staff (or procured contractor) to manage the overall project. Duties of the project management team will include but not limited to: overall project coordination, review of technical deliverables, scheduling, production, meetings, managing staff, IT revisions, etc.

Position: N/A | Hours: N/A | Rate: N/A | Total: \$0



*The City is not requesting reimbursement for this cost nor is this cost included in the Grant cost estimate.*

## Project Management

Internal Staff to manage the overall project. Duties of the project management team will include but not limited to: Consultant selection, contracting, overall project coordination, review of technical deliverables, scheduling, production, meetings, managing staff, IT revisions, etc.

Position: N/A | Hours: N/A | Rate: N/A | Total: \$0

*The City is not requesting reimbursement for this cost nor is this cost included in the Grant cost estimate.*

## Preliminary Engineering Design (60%)

Engineering Design services will be employed to develop detailed design, plans, and specifications for the construction project, performed by the civil, geotechnical, and hydraulic engineering team. The consultant design cost estimate is based on typical cost estimates and historical data based on the size of the project and estimated effort, as well as typical consulting rates. Total (Preliminary and Final) Design cost estimates are typically 10% of the total construction cost. The cost estimate for preliminary design was estimated to be 5% or half of the total construction design cost estimate.

Position: Design Consultant | Total: \$458,000

## Community Engagement and Stakeholder Outreach

The City will hold 2 community engagement events to obtain community feedback on the project design and process. Current outreach efforts, including the project website, periodic newsletters, social media and other engagement collateral, will be continued with the additional design and implementation planning. This task also includes the cultural resource study and tribal consultation to be performed by Indigenous knowledge specialists. Community Engagement Specialists will be performing this work. The estimate for this work is included in the preliminary cost estimates.

Position: Community Engagement Specialists | Total: \$75,000

## Deliverables

Internal staff time to compile phase 1 deliverables and submit to Stakeholders for review and approval.

Position: N/A | Hours: N/A | Rate: N/A | Total: \$0

*The City is not requesting reimbursement for this cost nor is this cost included in the Grant cost estimate.*

## Grant Closeout





This task includes all necessary project close out tasks such as development of final reports and grant management close out reports. The hourly quantities and rates are based upon previous grant management activities conducted by the staff in executing projects similar in nature and scope.

Position: N/A | Hours: N/A | Rate: N/A | Total: \$0

*The City is not requesting reimbursement for this cost nor is this cost included in the Grant cost estimate.*

Fountain Creek Channel Stabilization				
Design, Engineering and Permitting Costs				
Item	QTY	Unit	Unit Cost	Total
Preliminary Engineering and Design				\$ 318,000
CLOMR and Permitting Fees	1	LS	\$ 80,000	\$ 80,000
Environmental Studies and Data Collection	1%			\$ 30,000
Environmental Permitting	0.5%			\$ 15,000
Finalizing Environmental and Historical Requirements	0.5%			\$ 15,000
Outreach and Public Engagements				\$ 75,000
<b>Phase 1 Total</b>				<b>\$ 533,000</b>

Constructions Costs				
Mobilization	1	LS	\$ 131,250	\$ 131,250
Traffic Control	1	LS	\$ 31,500	\$ 31,500
Clearing and Grubbing	1	LS	\$ 36,750	\$ 36,750
Dewatering, Erosion, and Sediment Control (10%)	1	LS	\$ 367,500	\$ 367,500
Earthwork - Cut/Fill Onsite	15000	CY	\$ 21	\$ 315,000
Sculpted Concrete Drop Structure (4.0')	2	EA	\$ 288,750	\$ 577,500
Grouted Cross Vane	5	EA	\$ 37,800	\$ 189,000
Riprap Bank Protection	8200	TN	\$ 95	\$ 779,000
Outfall Stabilization	3	EA	\$ 15,750	\$ 47,250
Seeding (Wetland/Riparian/Upland)	5.6	AC	\$ 4,200	\$ 23,520
Soil Amendment	5.6	AC	\$ 8,400	\$ 47,040
Plantins (Herbaceous, Shrubs, Trees)	5.6	AC	\$ 31,500	\$ 176,400
Coir Fabric	8150	SY	\$ 21	\$ 171,150
Coconut Fabric	18590	SY	\$ 6	\$ 111,540
<b>Construction Subtotal</b>				<b>\$ 3,004,400</b>
Final Design and Construction Plans	5%			\$ 150,200
Contract Procurement for construction	0.5%			\$ 15,000
Construction Management	5%			\$ 150,200
Grant Management	0%			\$ 0
LOMR	1	LS	\$ 55,830	\$ 55,830
<b>Phase 2 Total</b>				<b>\$ 371,230</b>
<b>Phase 1 and 2 Total</b>				<b>\$ 3,375,630</b>

Narrative:

Project costs developed using recent City of Colorado Springs channel and storm drain improvement project unit costs and construction items identified in conceptual design. Estimated quantities based on conceptual design and recent site visit. Construction Management (5%) and Engineering (12%) is typical for City project estimating.

City of Colorado Springs will cover the standard 5% grant management cost and will not request reimbursement from FEMA or the State.

Contingency (5%) is standard FEMA value. Contingency is included in the individual unit costs. Concept design and other source material attached.