

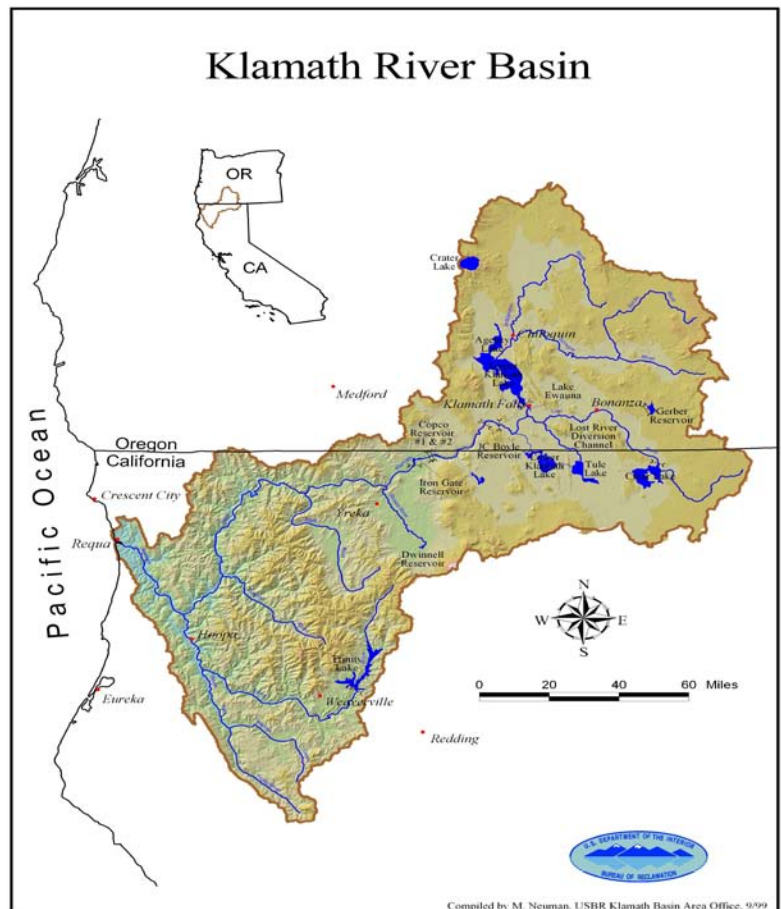
Klamath River Basin Study

Contacts:

Michelle Denning: (916) 978-5062

Arlan Nickel: (916) 978-5061

Bureau of Reclamation, Oregon's Water Resources Department, and California's Department of Water Resources are partnering to conduct the Klamath River Basin Study to identify strategies to meet current and future water demands in the Basin. The Klamath River Basin straddles the boundary between the states of California and Oregon and covers approximately 12,100 square miles. The basin originates east of the Cascade Mountain Range in Oregon and extends southwest into California where the Klamath River flows into the Pacific Ocean. The Klamath River Basin has become a focal point for local, regional, and national discussions on water management and water scarcity due to imbalances between water supplies and demands.



Employing broad stakeholder involvement, the Klamath Basin Study will accomplish the following objectives:

- Evaluate supply and demand imbalances in the basin which may be exacerbated by climate change;
- Identify possible impacts to the Basin's agricultural water requirements, hydroelectric facilities, recreational facilities, fish and wildlife habitats, flood control facilities, and water storage and distribution facilities; and
- Develop both structural and non-structural adaptive strategies to balance supplies with demands.

Stakeholder involvement in the Study includes a broad spectrum of Klamath tribal governments, water user groups, agriculture associations and environmental interests. The total cost of the Klamath Basin Study is \$1.85 million with a 50/50 cost share between Reclamation and the States of California and Oregon.