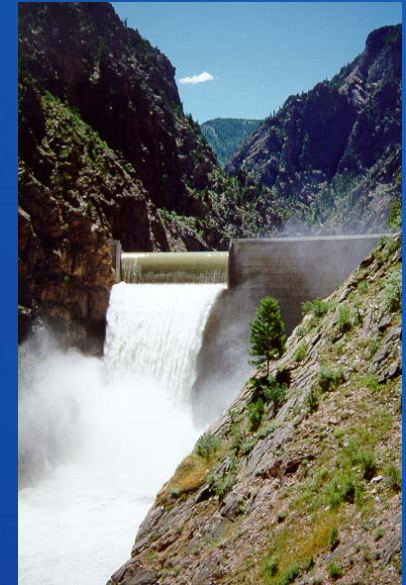
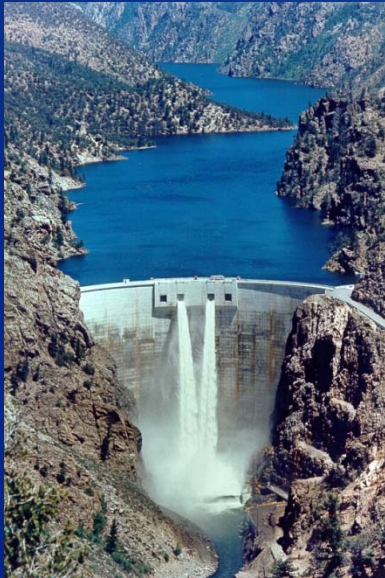


# Aspinall Operations Meeting

August 18, 2016

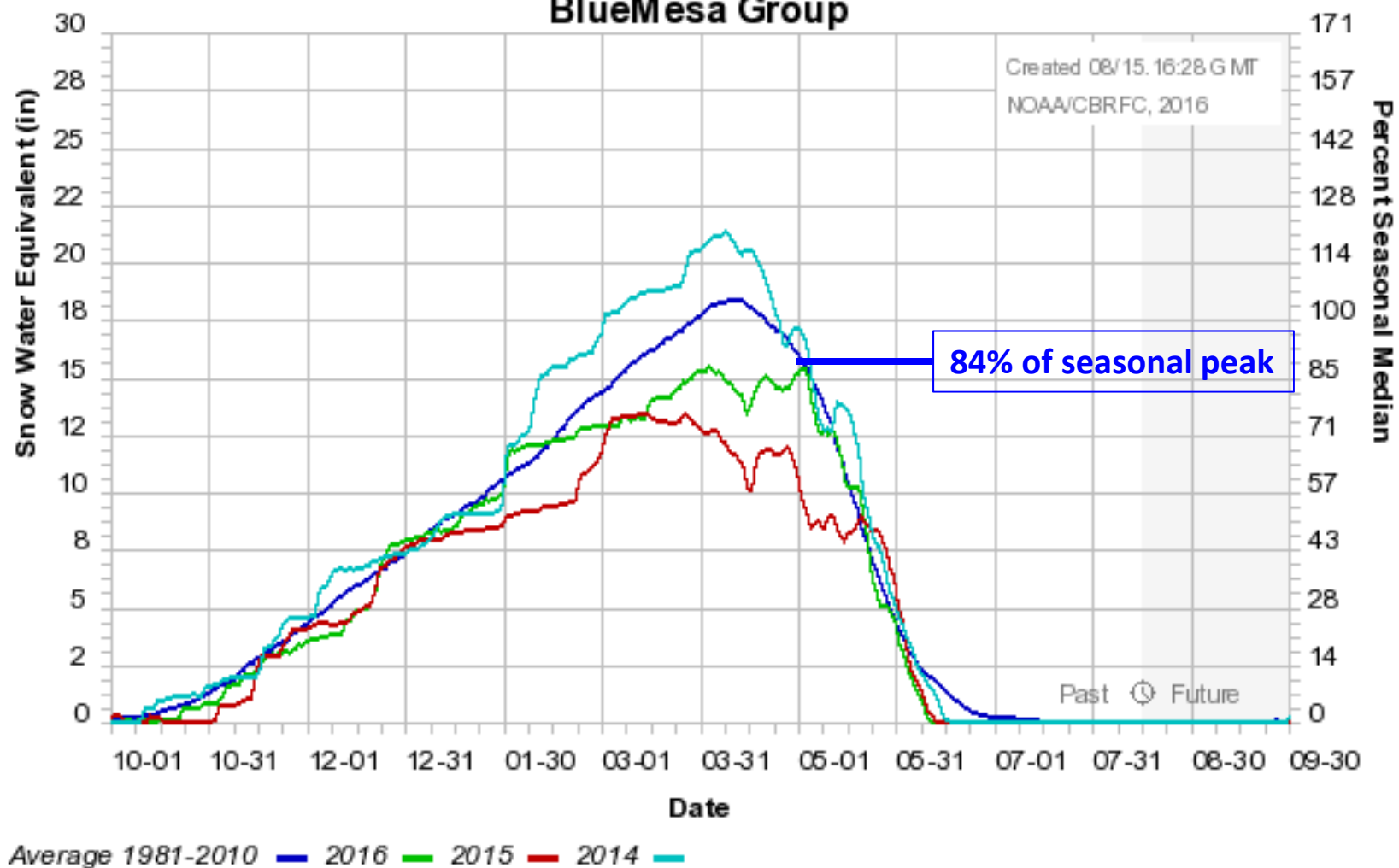


RECLAMATION

# SPRING RUNOFF

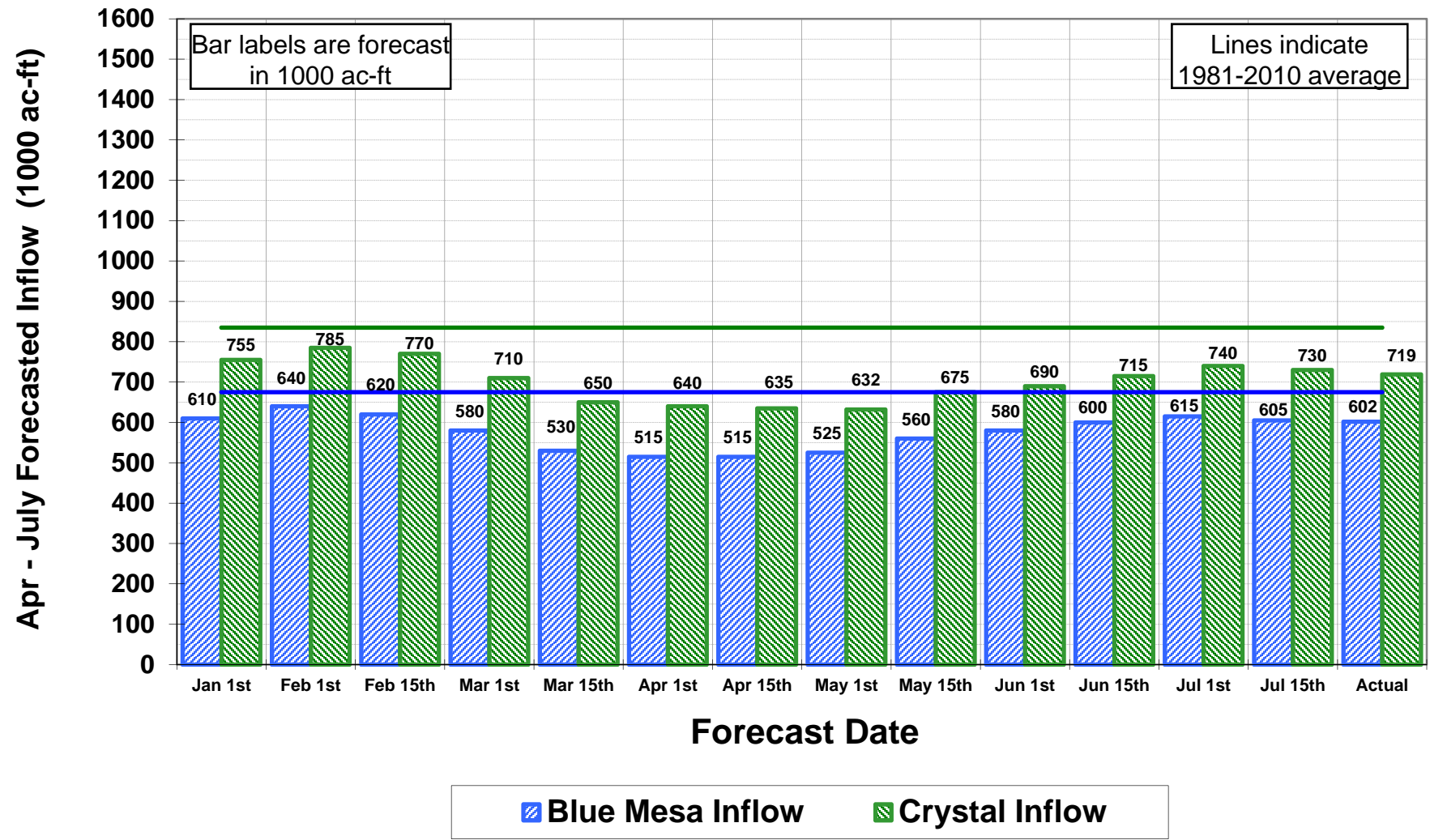
RECLAMATION

## Colorado Basin River Forecast Center BlueMesa Group

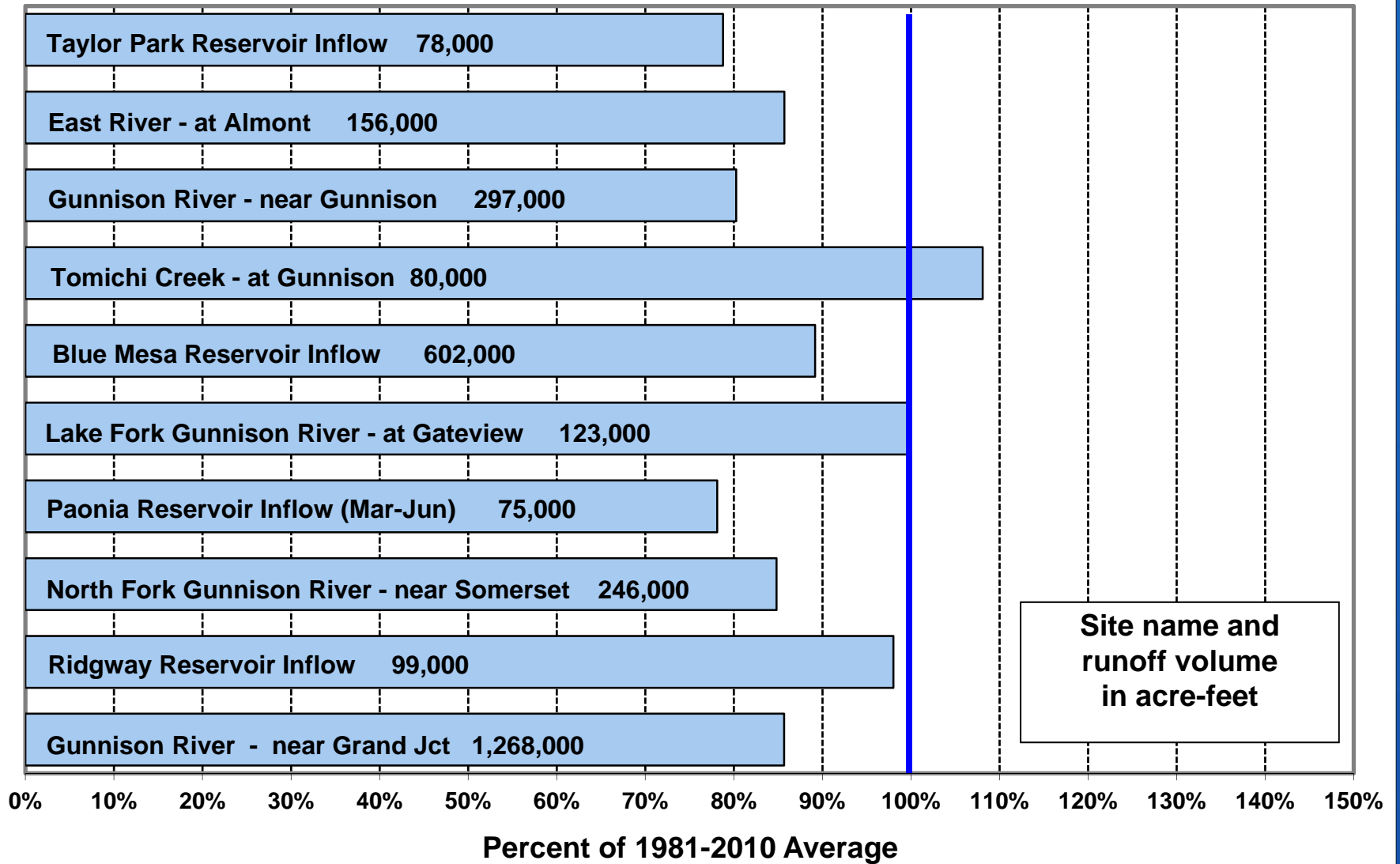


# RECLAMATION

## Aspinall Unit Forecasted Unregulated Inflow



## Actual April-July Runoff



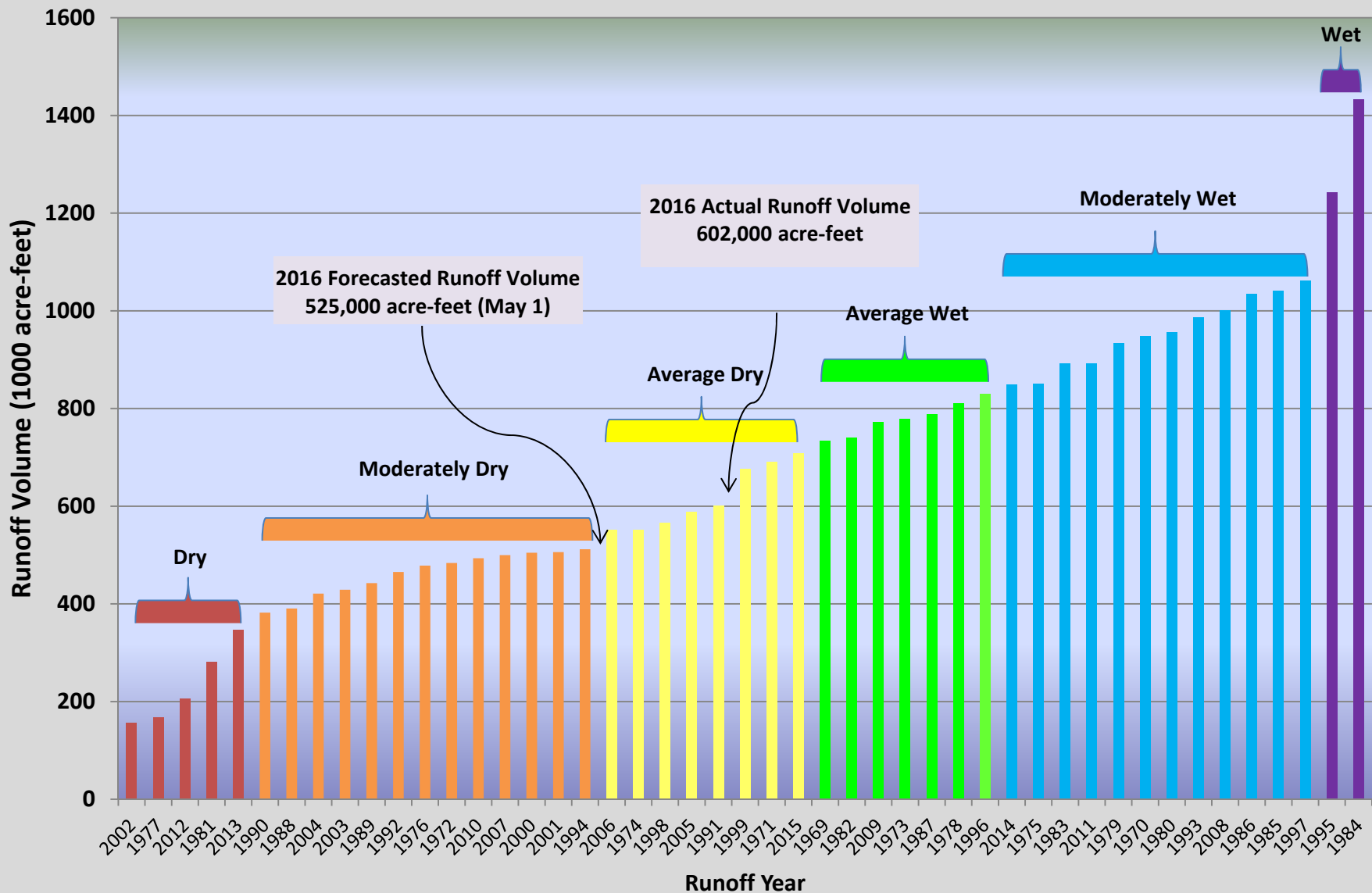
RECLAMATION

**BLACK CANYON PEAK  
AND LOWER GUNNISON RIVER TARGETS**

**RECLAMATION**

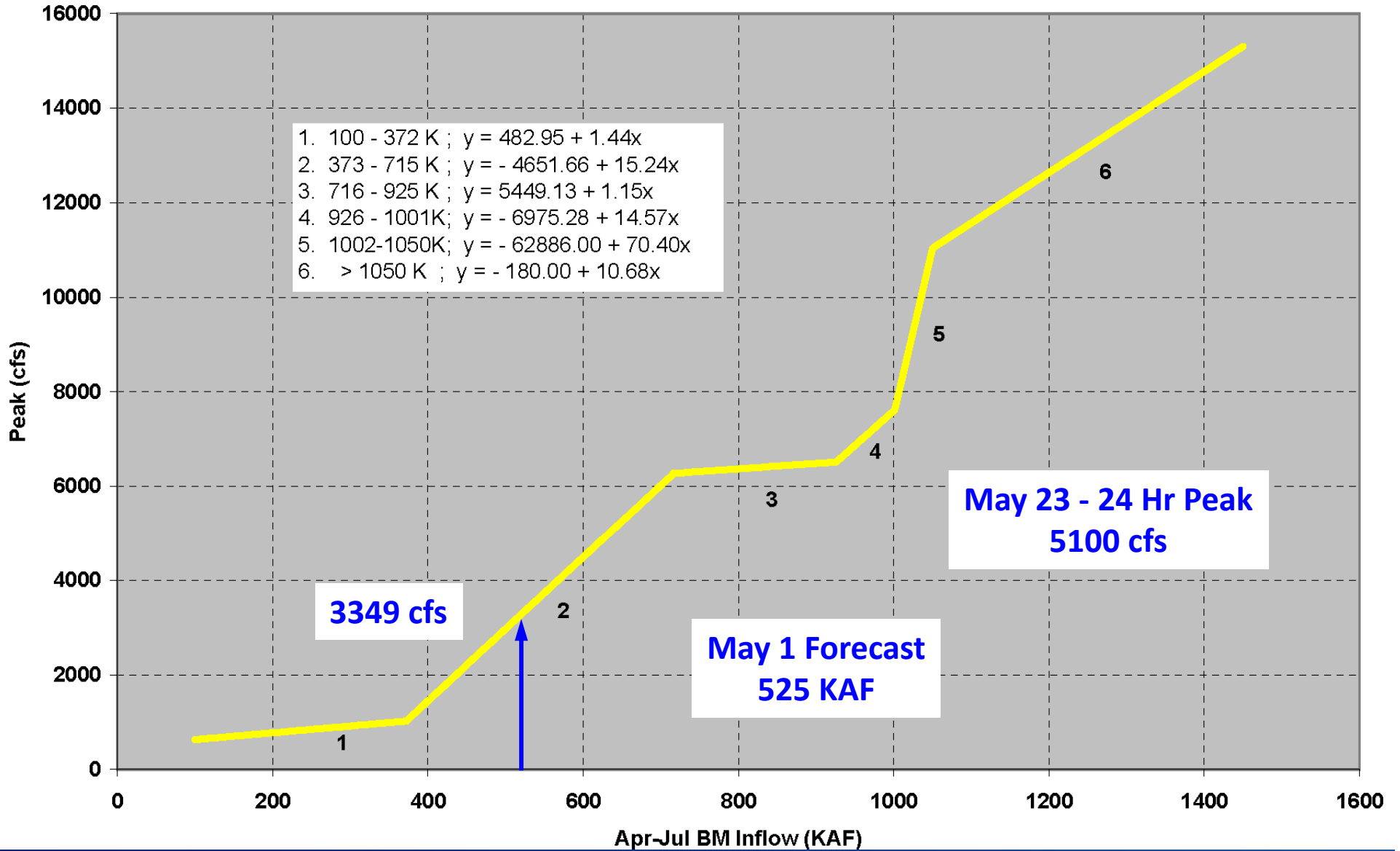
# Blue Mesa Reservoir

## Historic Apr-July Unregulated Inflow Volume Ranking (1969-2015)



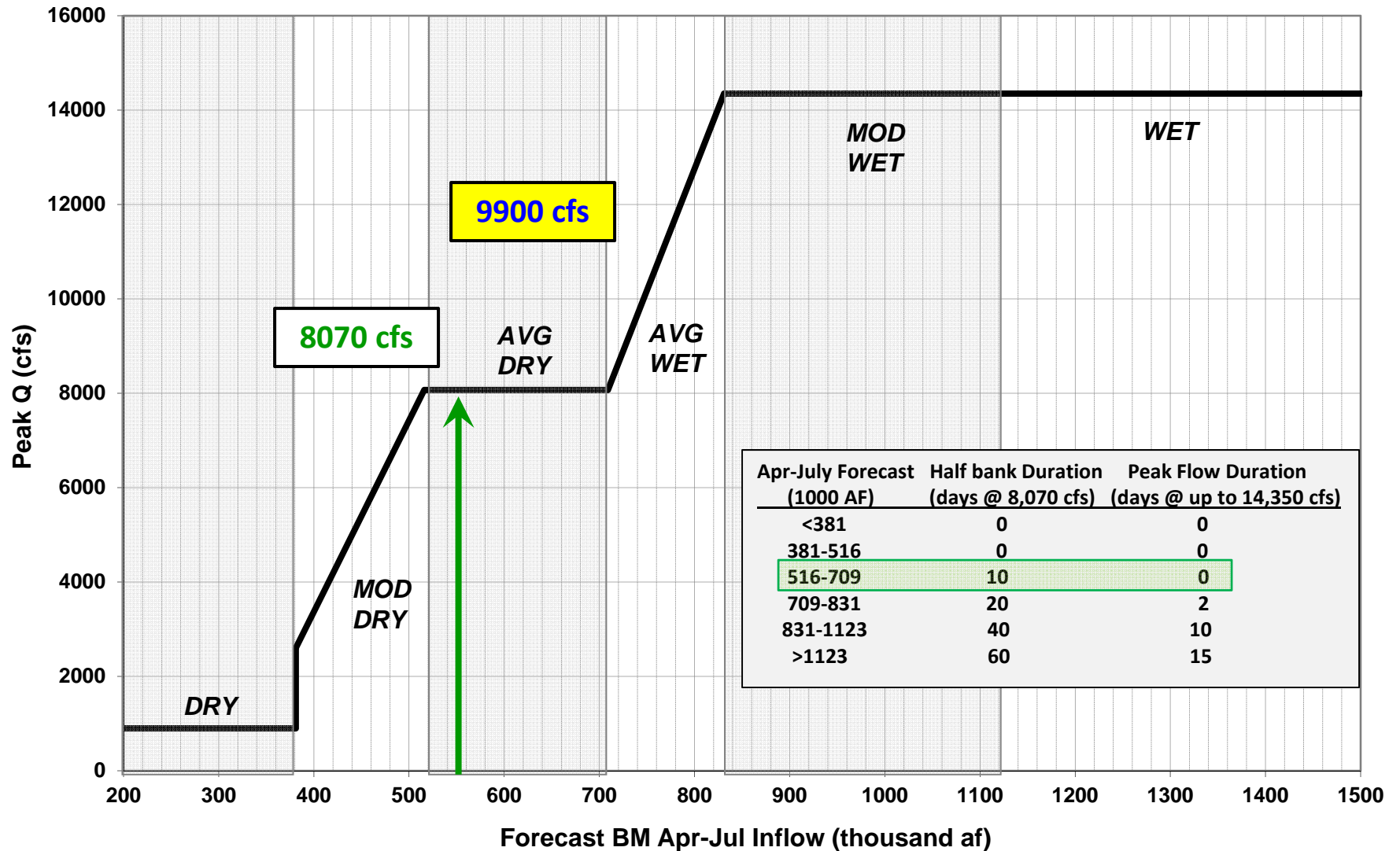


# Black Canyon Peak Flow Determination based on Blue Mesa May 1 forecast

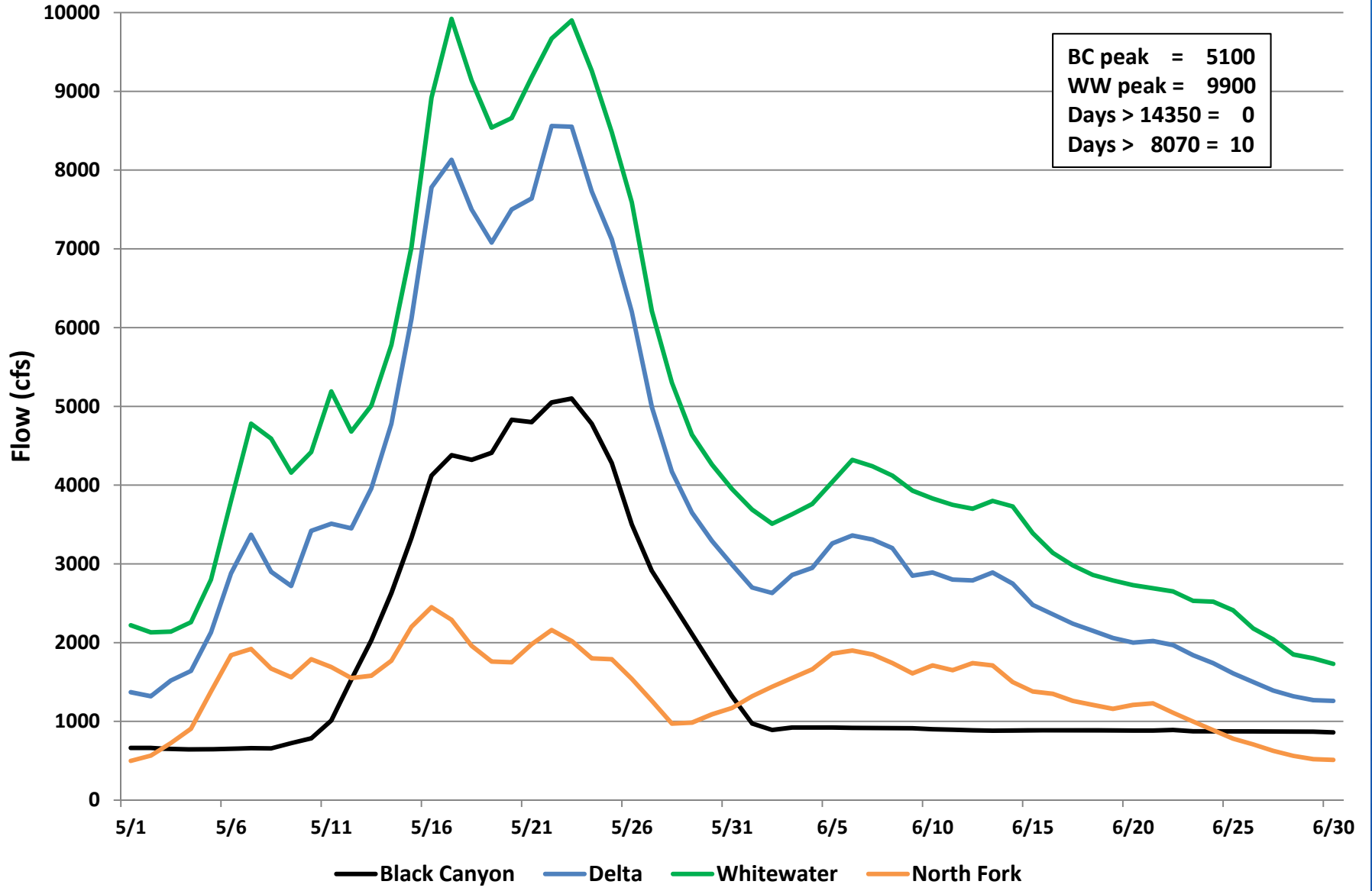




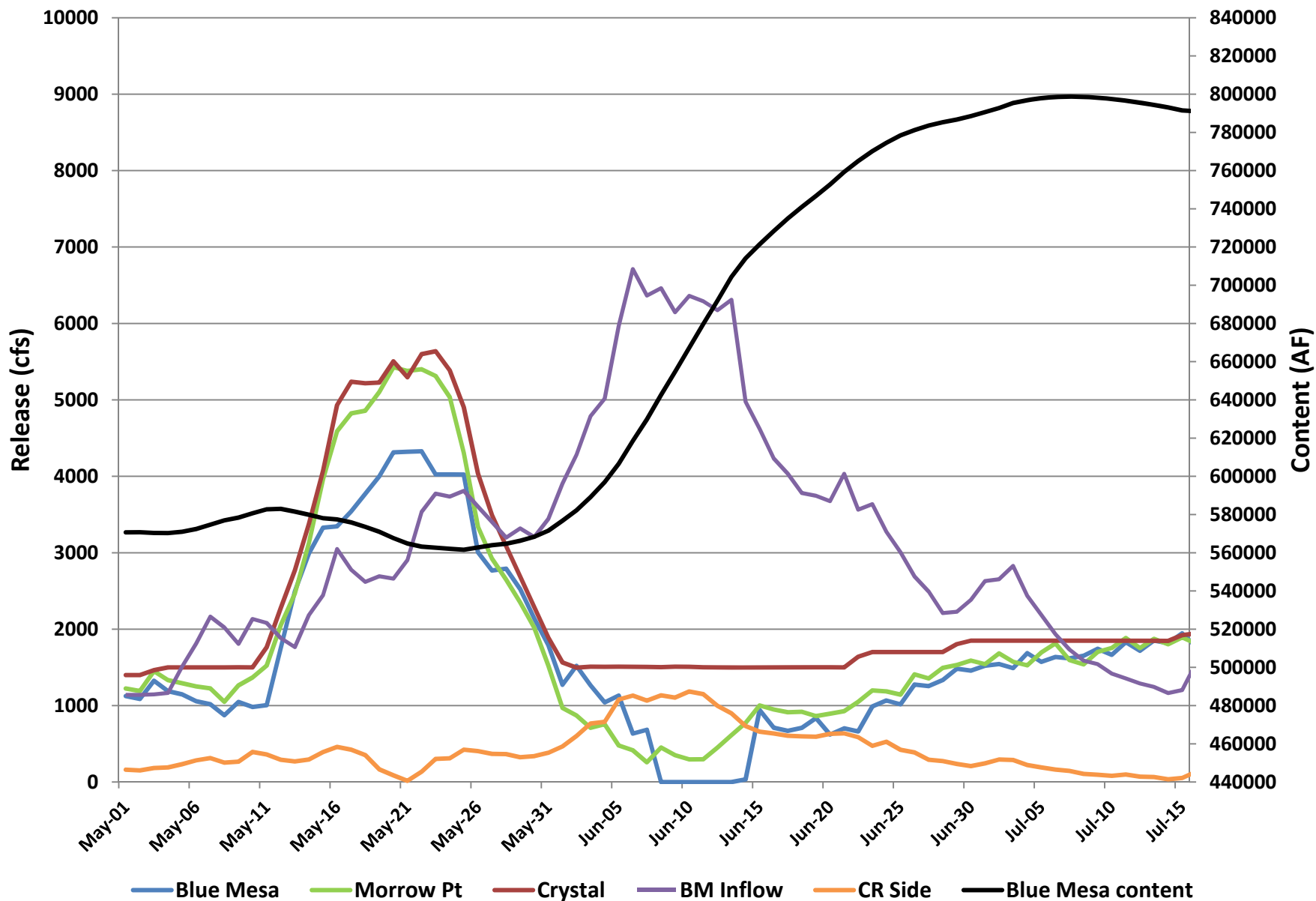
## Peak Flow and Duration Day Targets at Whitewater



## Gunnison River Flows Avg Dry Year



# Aspinall Unit Operations



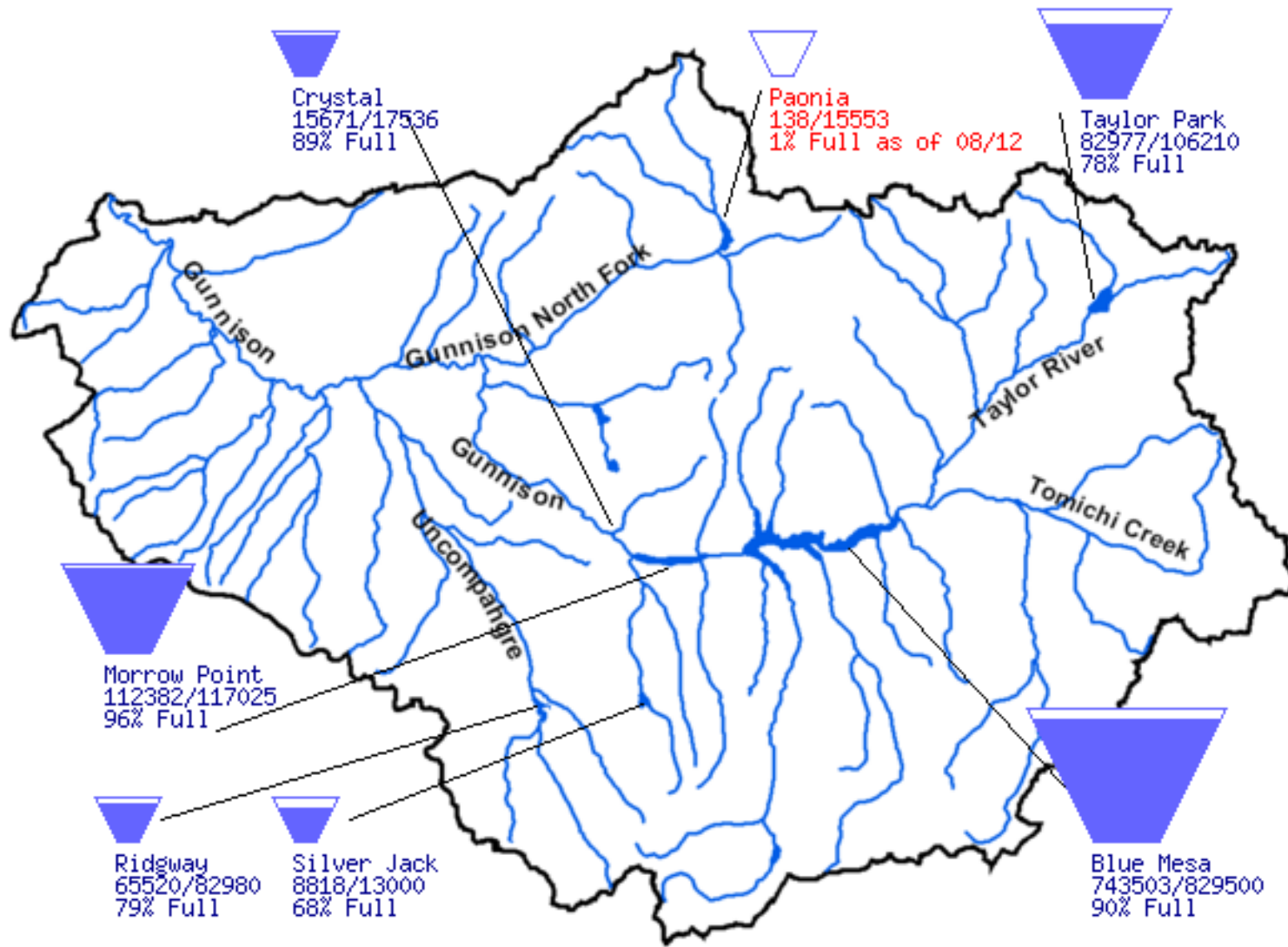
RECLAMATION

# SUMMER/FALL OPERATIONS

RECLAMATION

Data Current as of:  
08/16/2016

## Gunnison River Basin, CO



# RECLAMATION

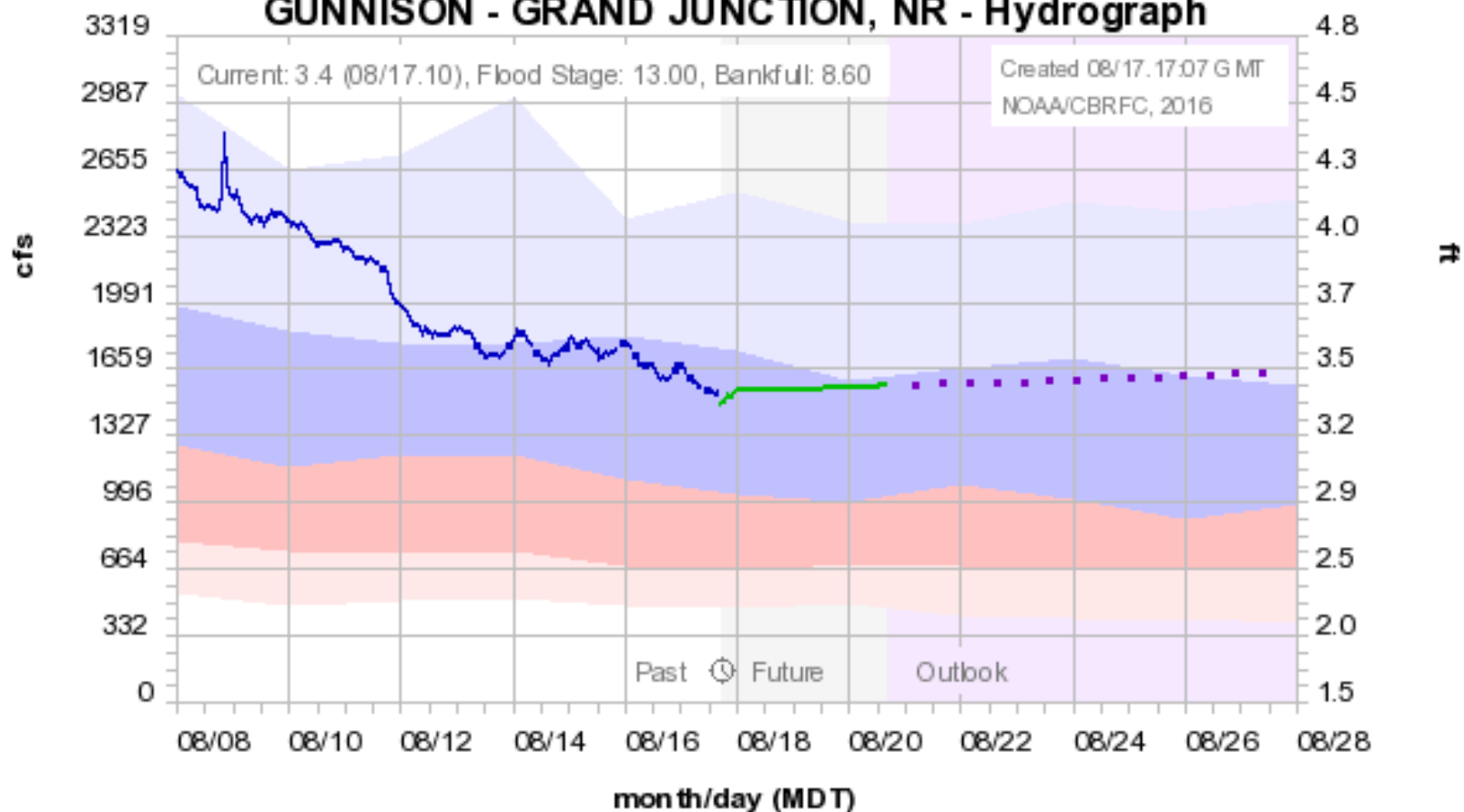
# Baseflow Targets

	Jan	Feb	Mar	Apr	May	Jun	Jul	Aug	Sep	Oct	Nov	Dec
<b>Wet</b>	<b>1050</b>	<b>1050</b>	<b>1050</b>	<b>1050</b>	<b>1050</b>	<b>1500</b>	<b>1500</b>	<b>1500</b>	<b>1050</b>	<b>1050</b>	<b>1050</b>	<b>1050</b>
<b>Mod Wet</b>	<b>1050</b>	<b>1050</b>	<b>1050</b>	<b>1050</b>	<b>1050</b>	<b>1500</b>	<b>1500</b>	<b>1500</b>	<b>1050</b>	<b>1050</b>	<b>1050</b>	<b>1050</b>
<b>Avg Wet</b>	<b>1050</b>	<b>1050</b>	<b>1050</b>	<b>1050</b>	<b>1050</b>	<b>1500</b>	<b>1500</b>	<b>1050</b>	<b>1050</b>	<b>1050</b>	<b>1050</b>	<b>1050</b>
<b>Avg Dry</b>	<b>1050</b>	<b>1050</b>	<b>1050</b>	<b>1050</b>	<b>1050</b>	<b>1500</b>	<b>1500</b>	<b>1050</b>	<b>1050</b>	<b>1050</b>	<b>1050</b>	<b>1050</b>
<b>Mod Dry*</b>	<b>750</b>	<b>750</b>	<b>750/790</b>	<b>750/890</b>	<b>750/890</b>	<b>1050</b>	<b>1050</b>	<b>1050</b>	<b>750/890</b>	<b>750/790</b>	<b>750/790</b>	<b>750</b>
<b>Dry*</b>	<b>750</b>	<b>750</b>	<b>750/790</b>	<b>750/890</b>	<b>750/890</b>	<b>1050</b>	<b>1050</b>	<b>750/890</b>	<b>750/890</b>	<b>750/790</b>	<b>750/790</b>	<b>750</b>

\*During March through November in Moderately Dry and Dry type years, additional releases will be made as necessary to provide flows above the 750 cfs anticipated to be diverted by the Redlands Water and Power Company, for the fish ladder and fish screen as shown.

RECLAMATION

## Colorado Basin River Forecast Center GUNNISON - GRAND JUNCTION, NR - Hydrograph



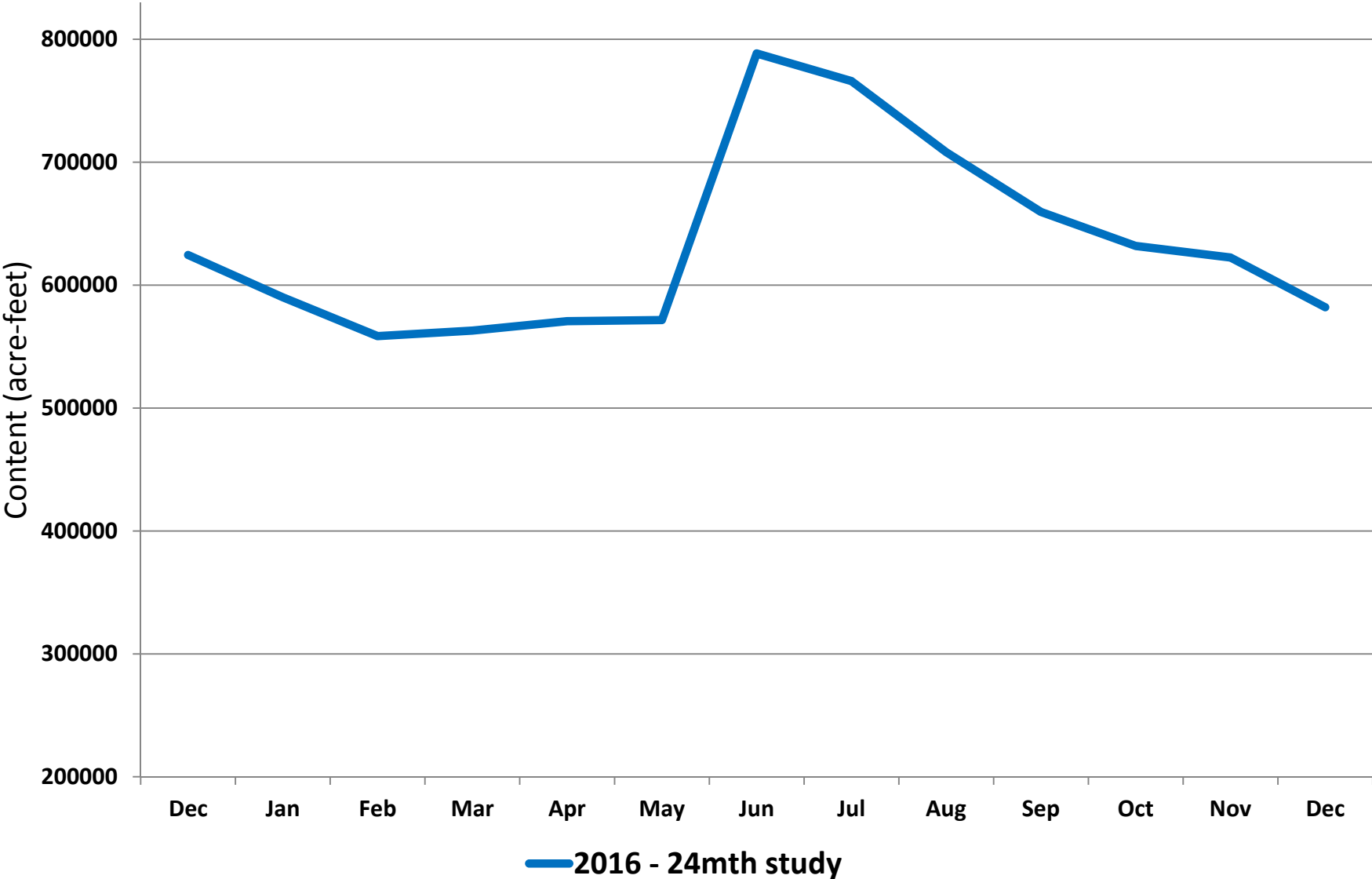
Observed — Forecast (08/17. 14:00) — Outlook (increasing uncertainty) - - -

Historical Exceedance Probability (USGS): 90-75% 75-50% 50-25% 25-10%

# RECLAMATION

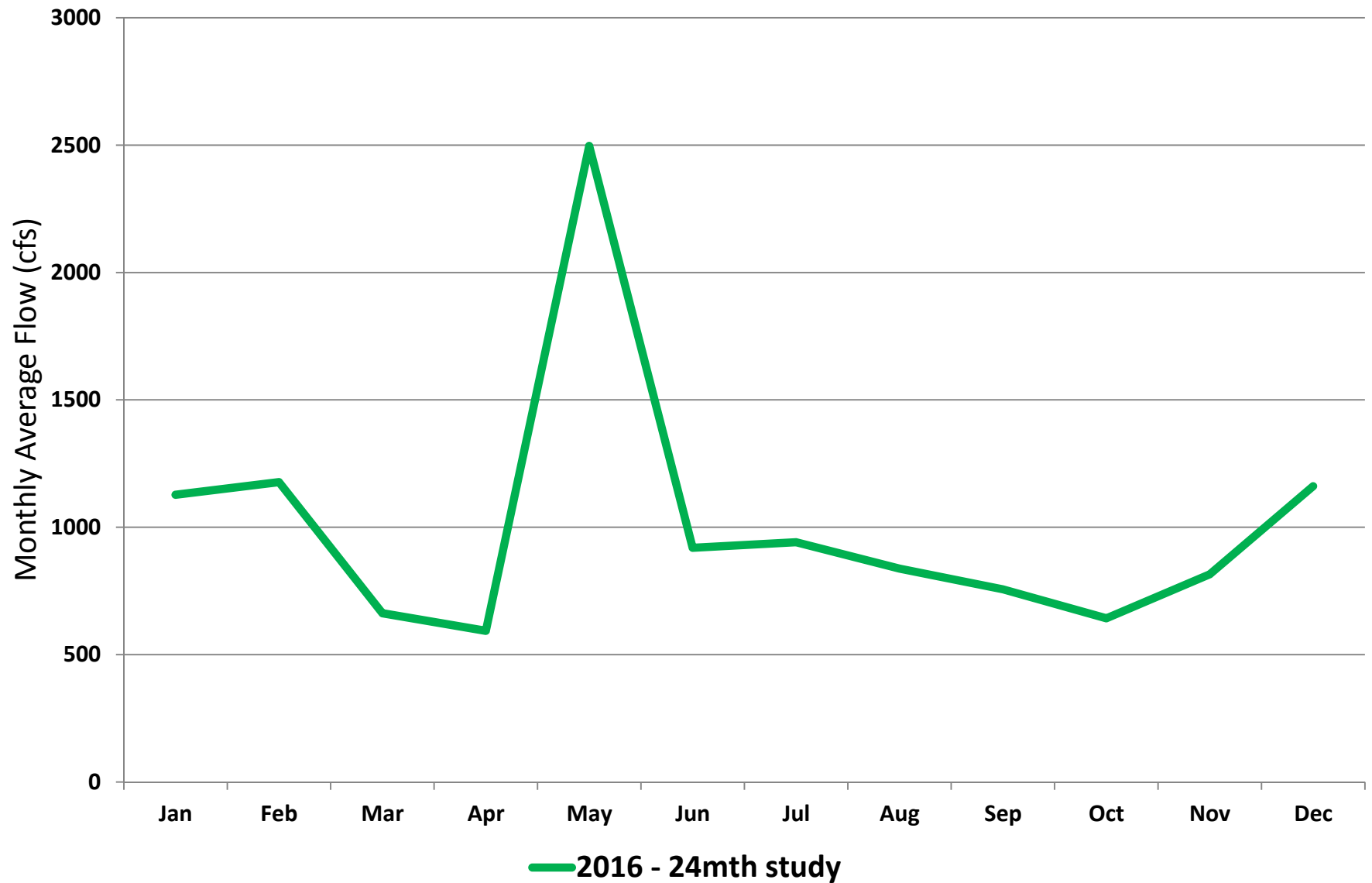


# BLUE MESA End of Month Content



RECLAMATION

## Gunnison River Flows - Black Canyon Monthly Average



RECLAMATION



RECLAMATION