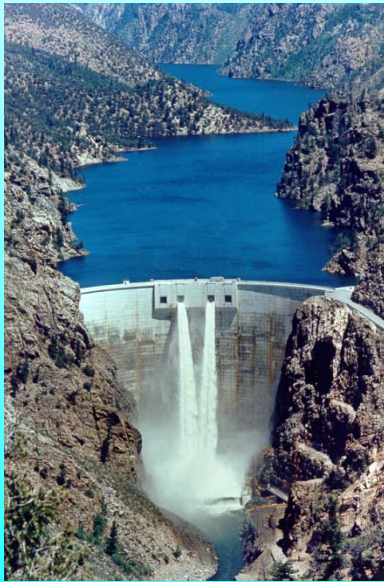


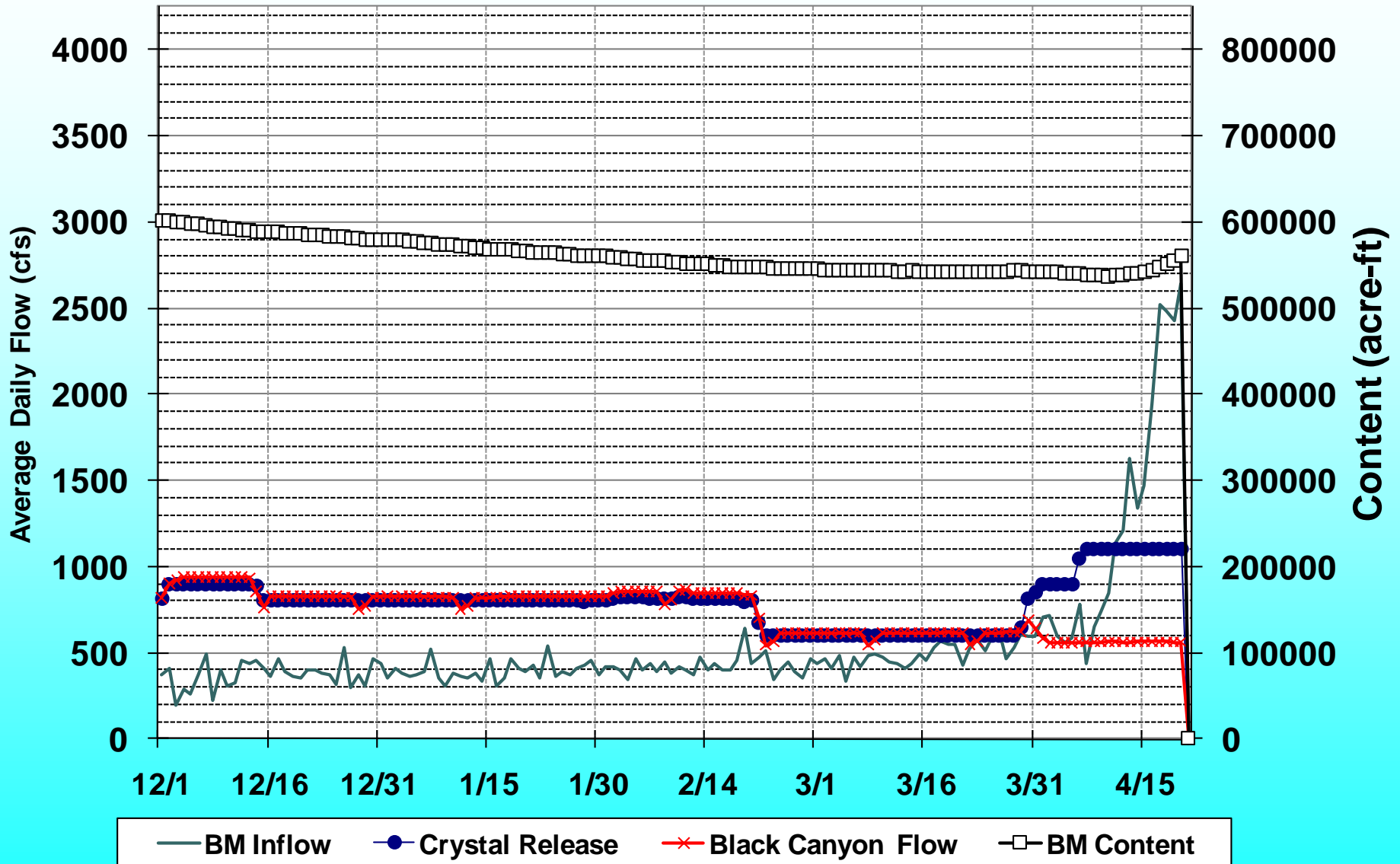
Aspinall Operations Meeting

April 22, 2010

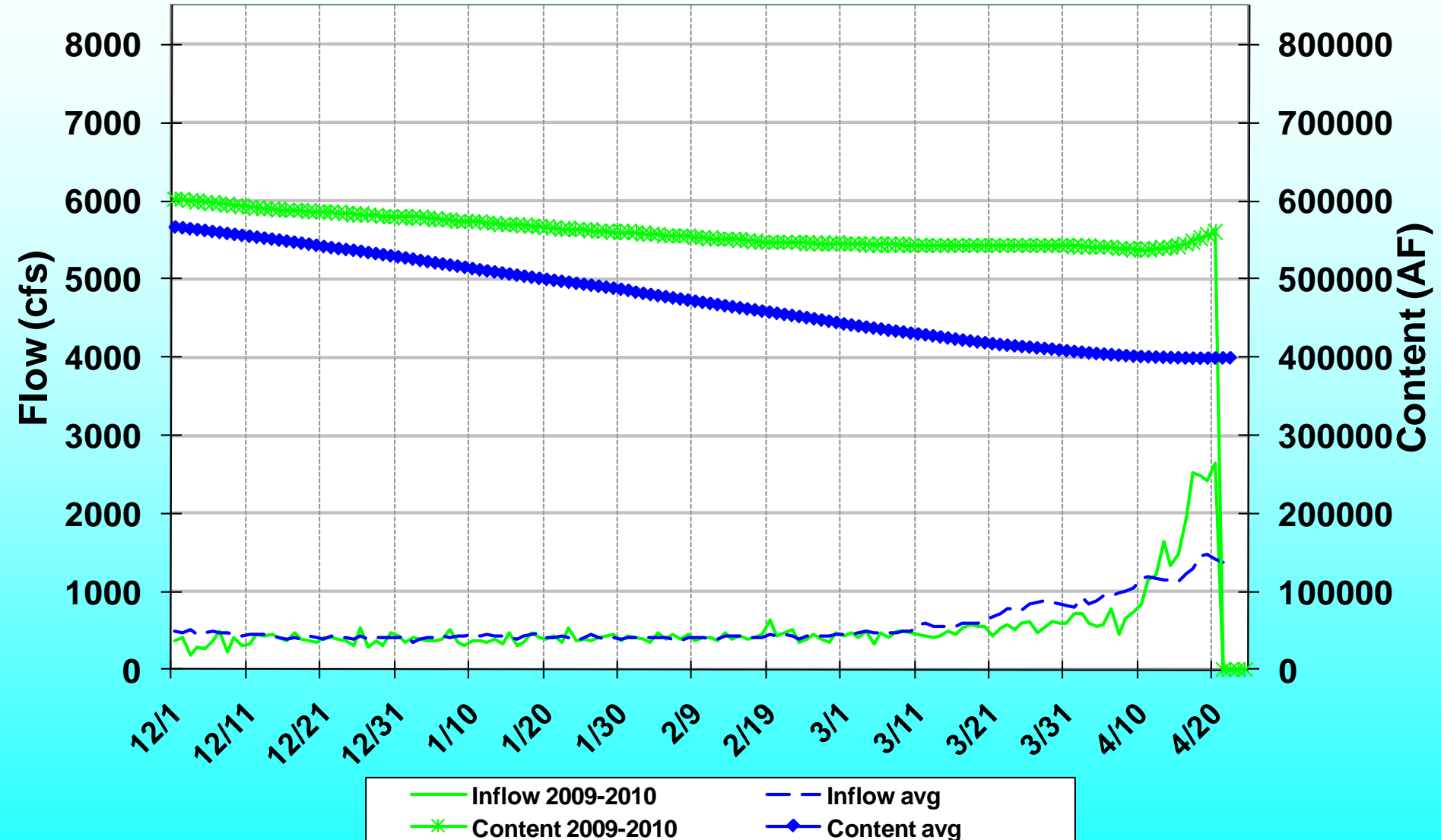


PAST OPERATIONS

December 2009 - April 2010



December 2009 - April 2010 Blue Mesa Comparison with Long Term Average

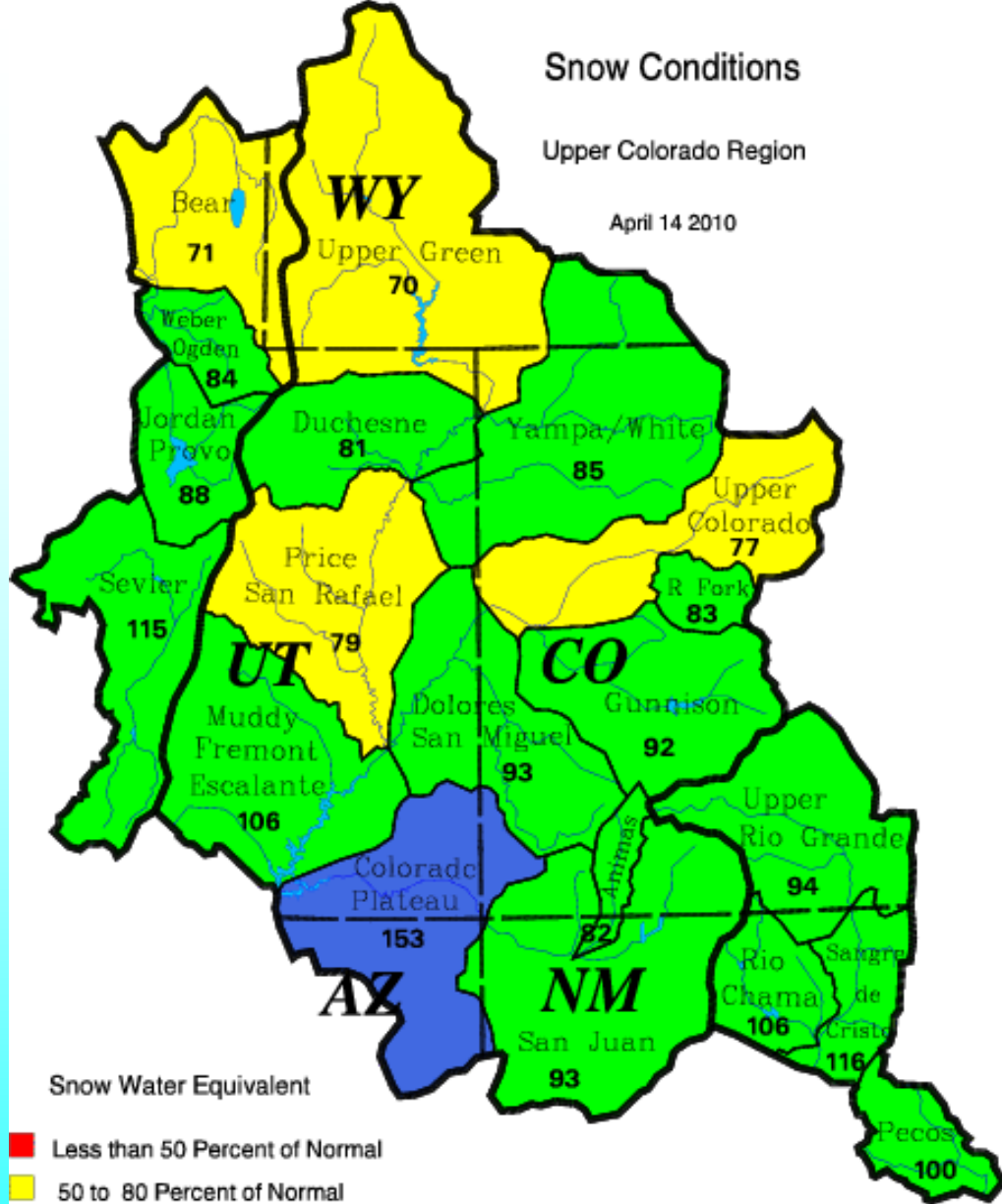


CURRENT CONDITIONS

Snow Conditions

Upper Colorado Region

April 14 2010



Snow Water Equivalent

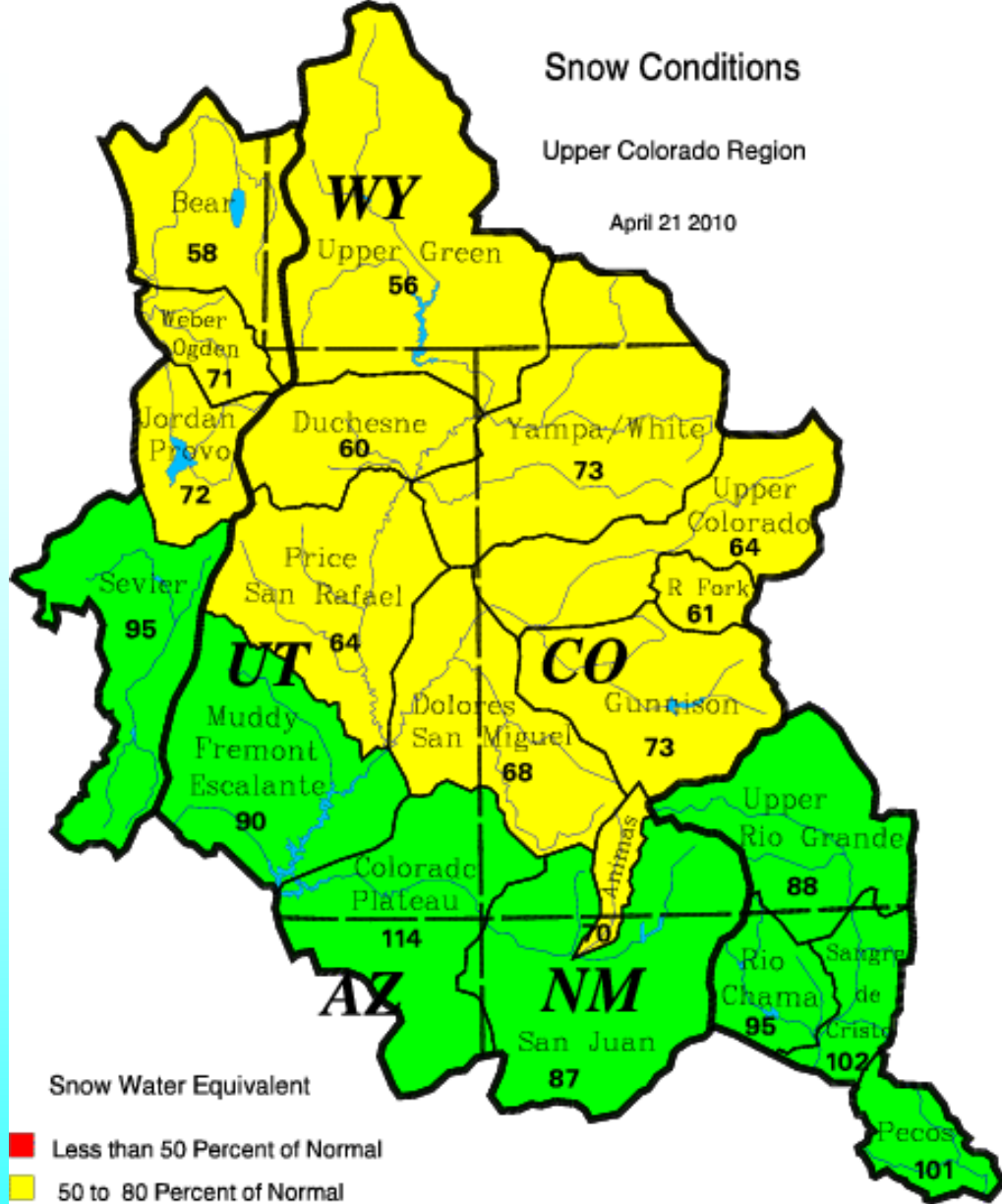
- Less than 50 Percent of Normal
- 50 to 80 Percent of Normal
- 80 to 120 Percent of Normal
- 120 to 150 Percent of Normal
- Greater than 150 Percent of Normal

Upper Colorado
GIS
Region

Snow Conditions

Upper Colorado Region

April 21 2010



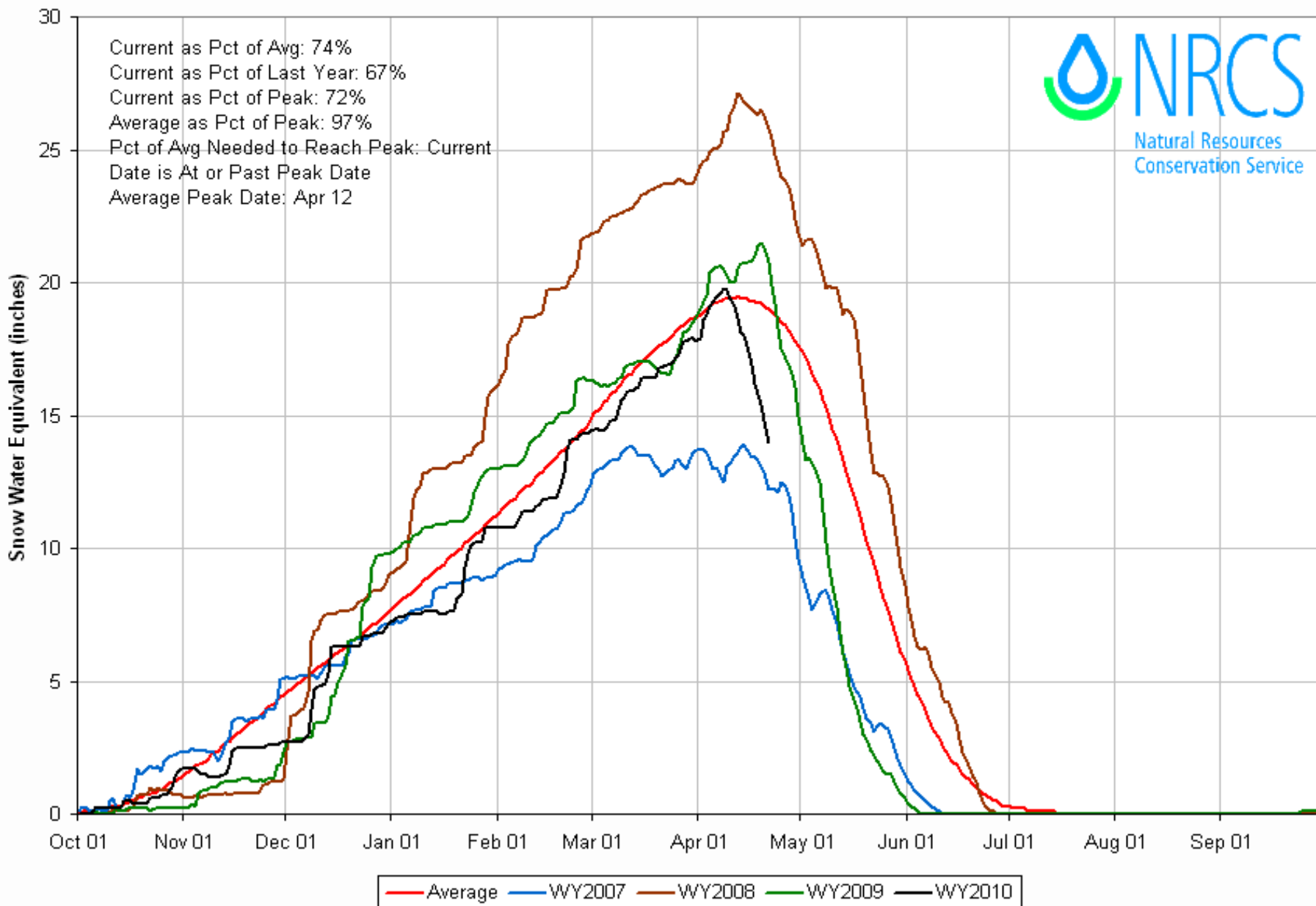
Snow Water Equivalent

- Less than 50 Percent of Normal
- 50 to 80 Percent of Normal
- 80 to 120 Percent of Normal
- 120 to 150 Percent of Normal
- Greater than 150 Percent of Normal

Upper Colorado
GIS
Region

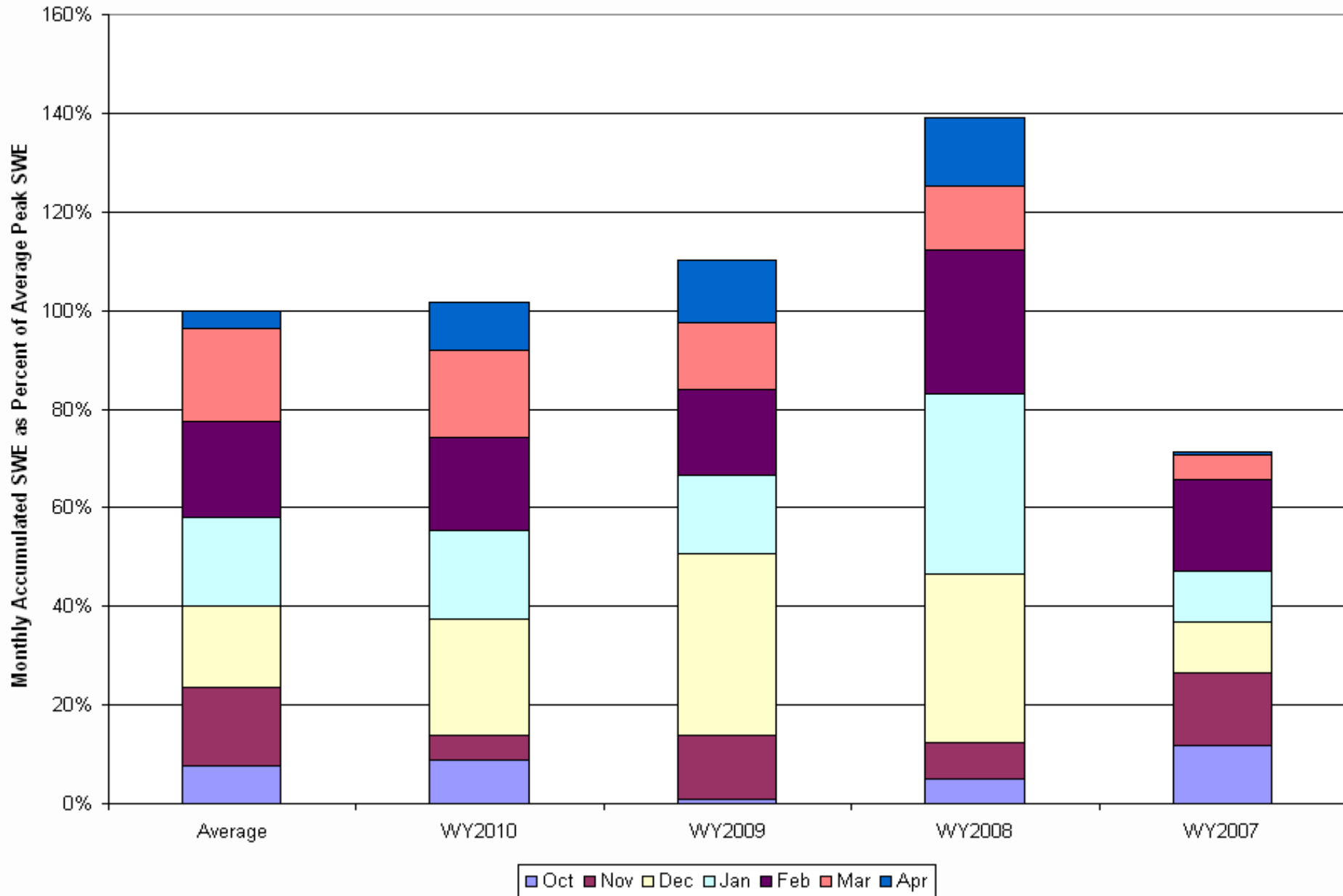
Gunnison River Basin Time Series Snowpack Summary

Based on Provisional SNOTEL data as of Apr 21, 2010

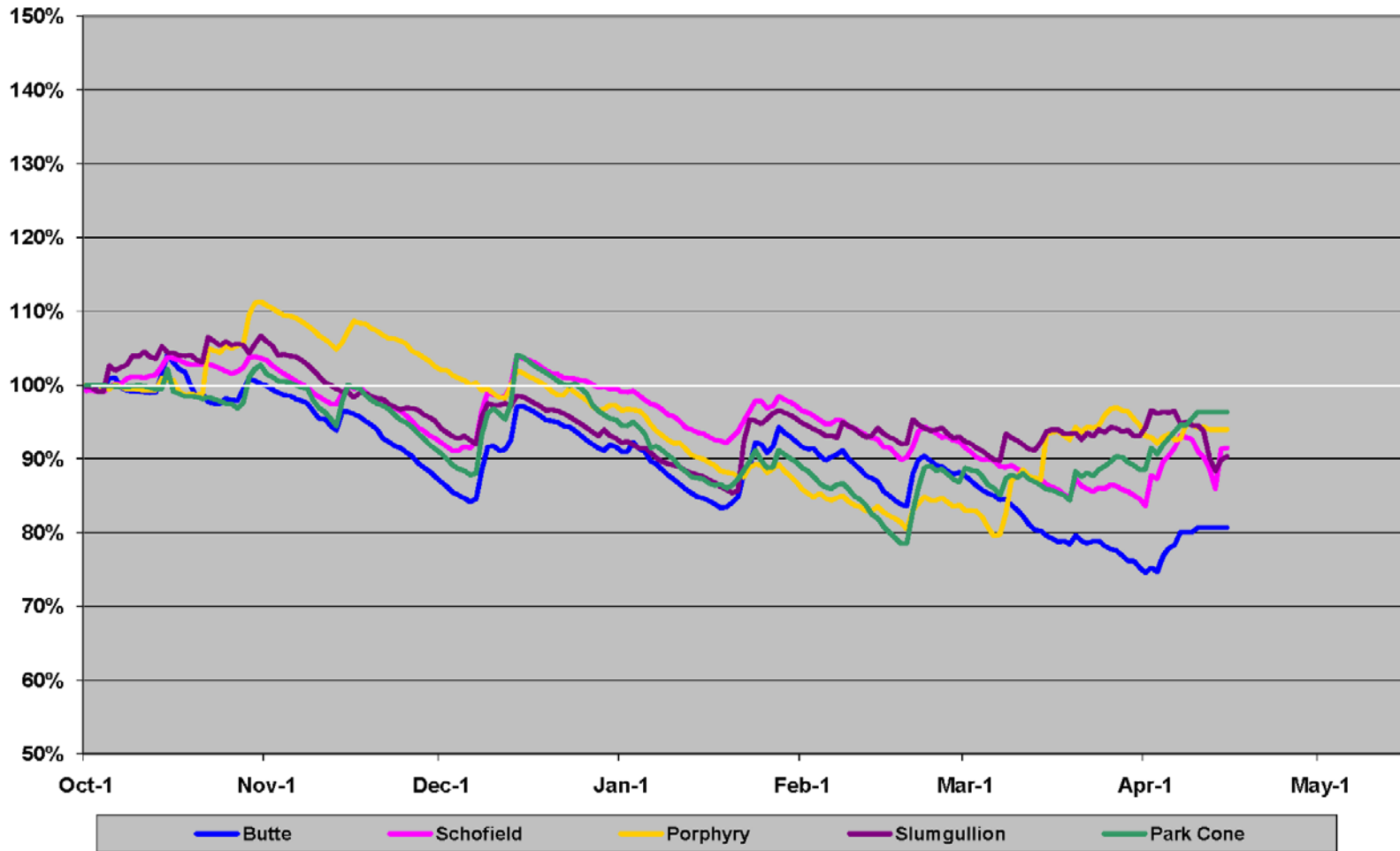


Gunnison River Basin Time Series Monthly Snowpack Summary

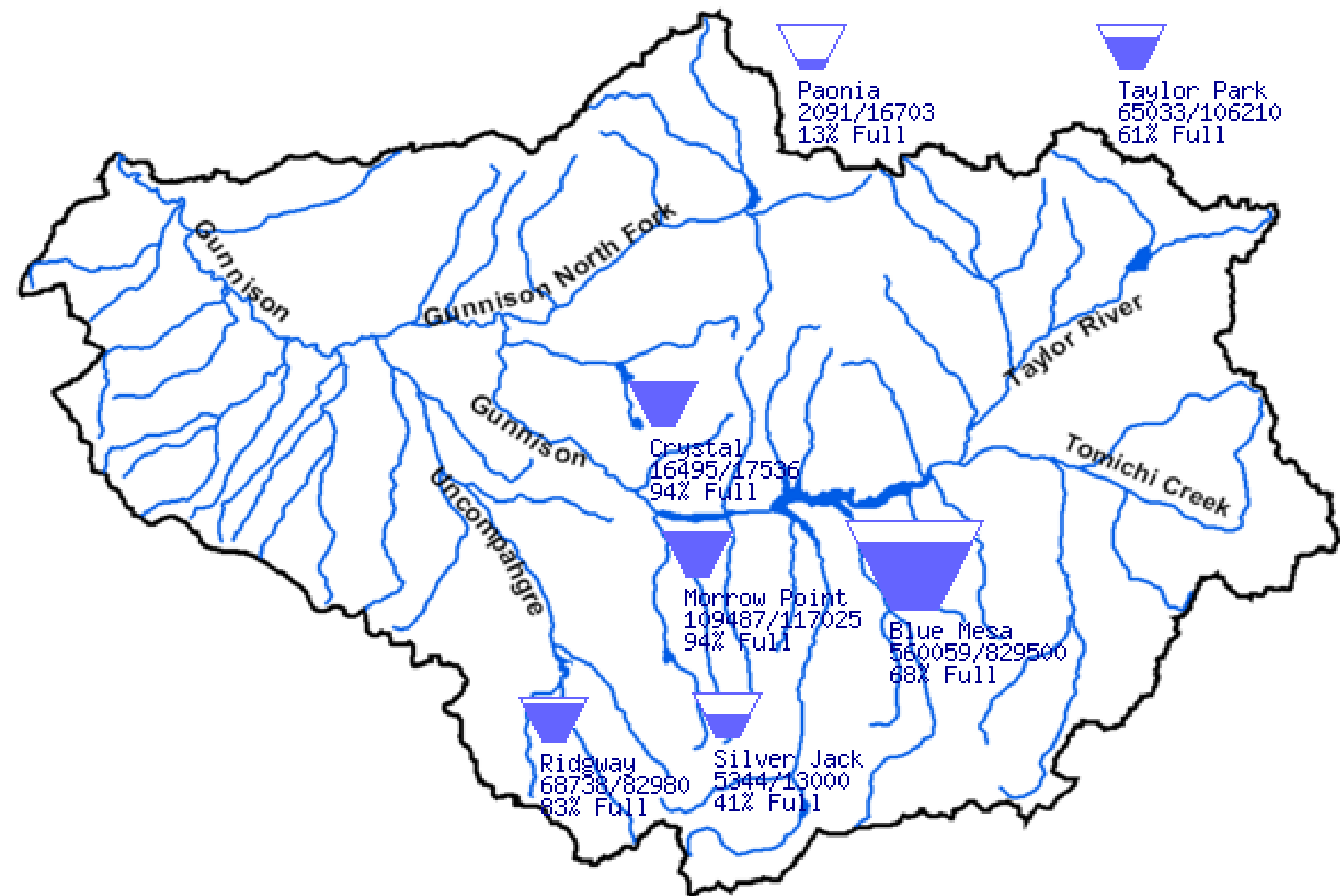
Based on Provisional SNOTEL data as of Apr 20, 2010



Upper Gunnison Basin SWE % of Average Daily (Scaled to % of Avg Annual Peak)

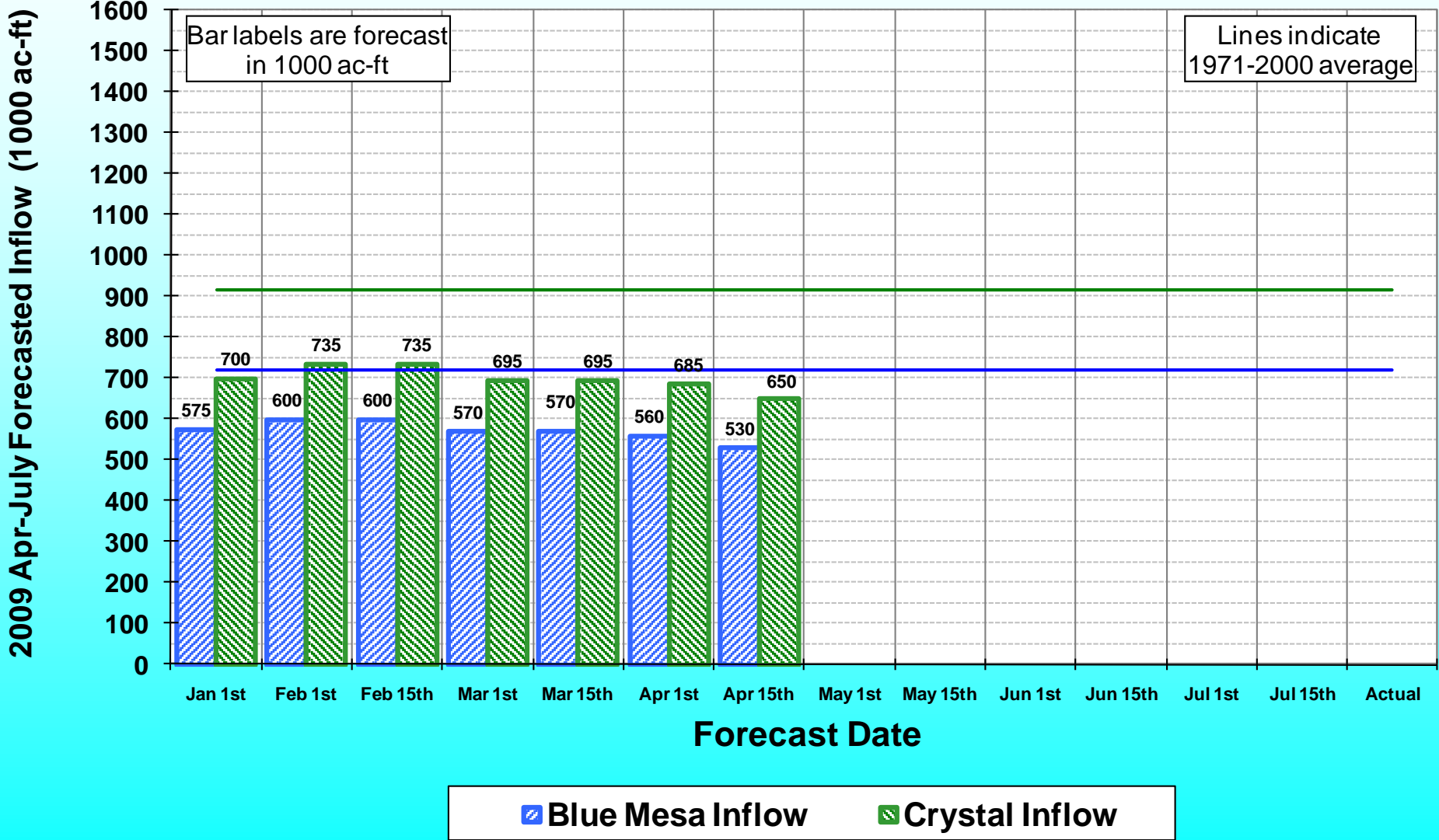


Gunnison River Basin, CO



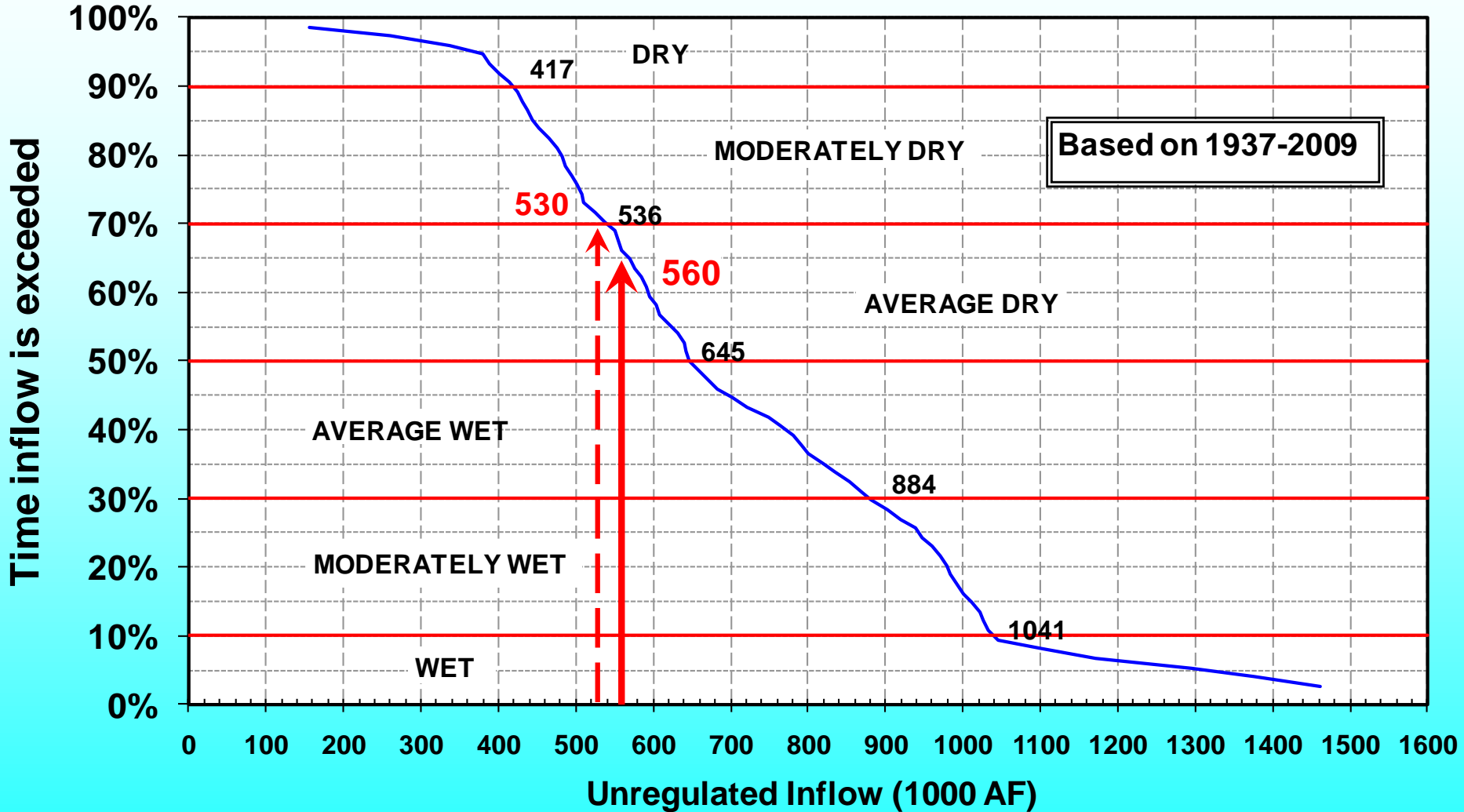
RUNOFF FORECASTS

Aspinall Unit Forecasted Unregulated Inflow



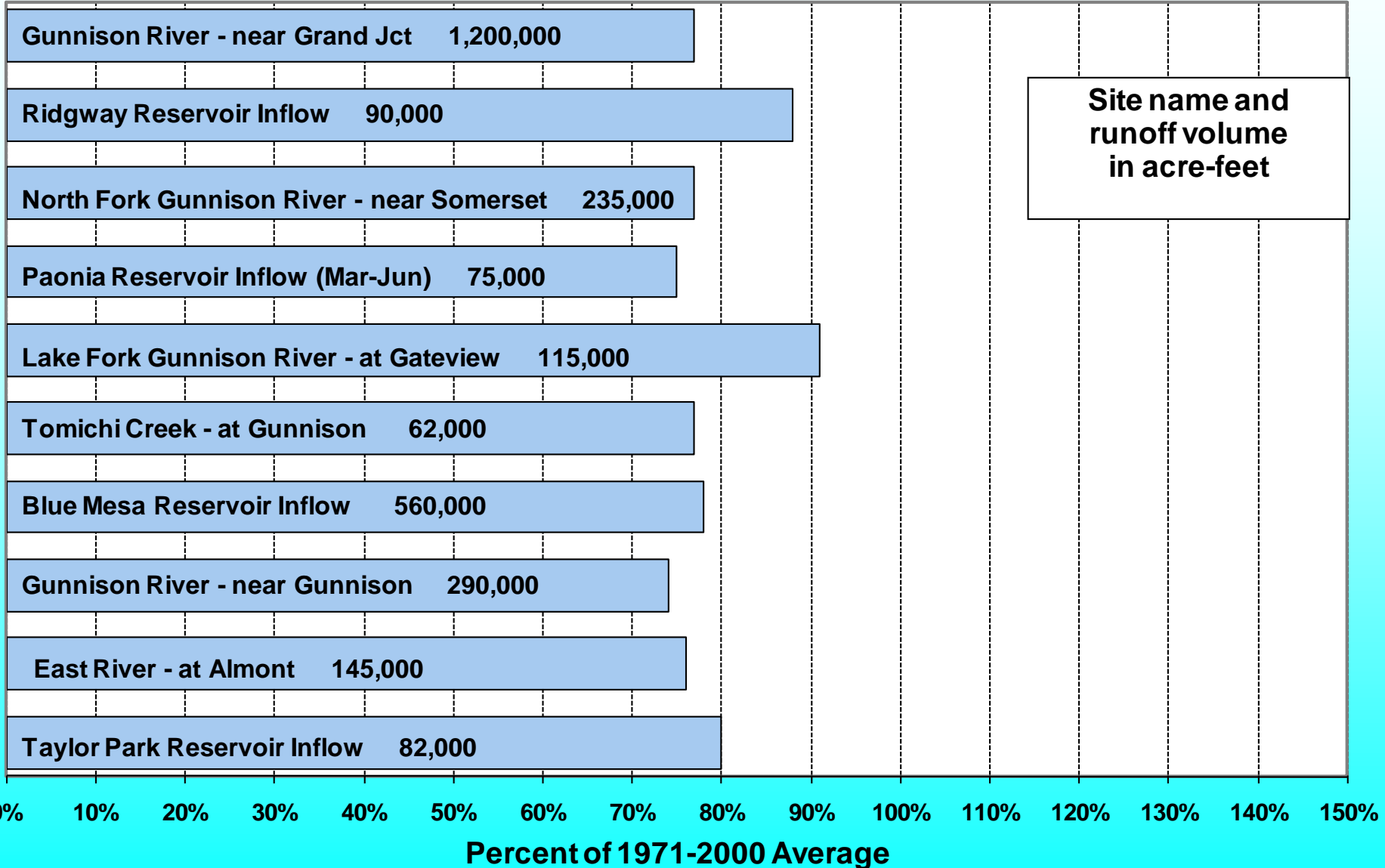
Blue Mesa Reservoir

April - July Unregulated Inflow



Forecasted April-July Runoff

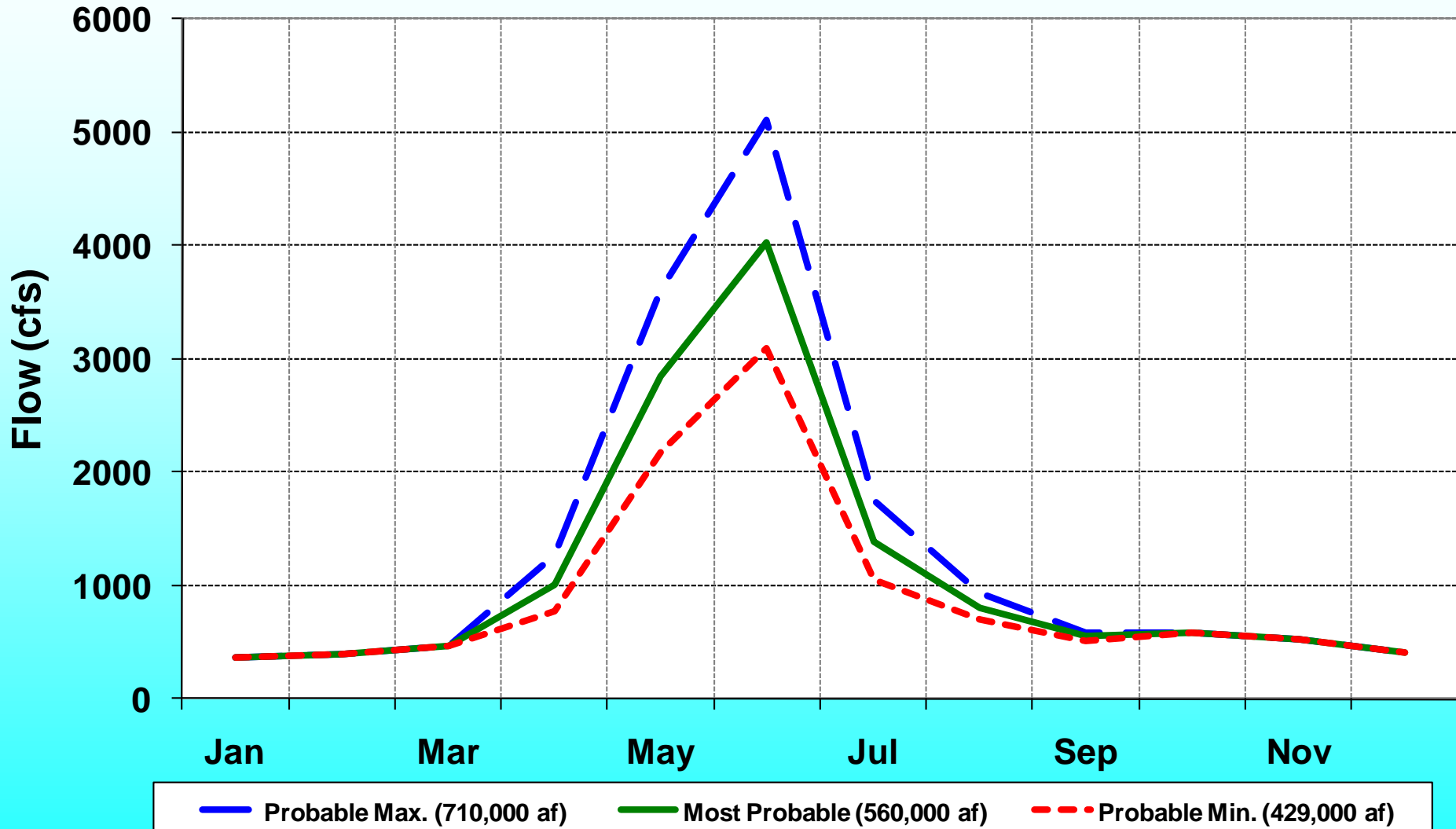
As of April 1st



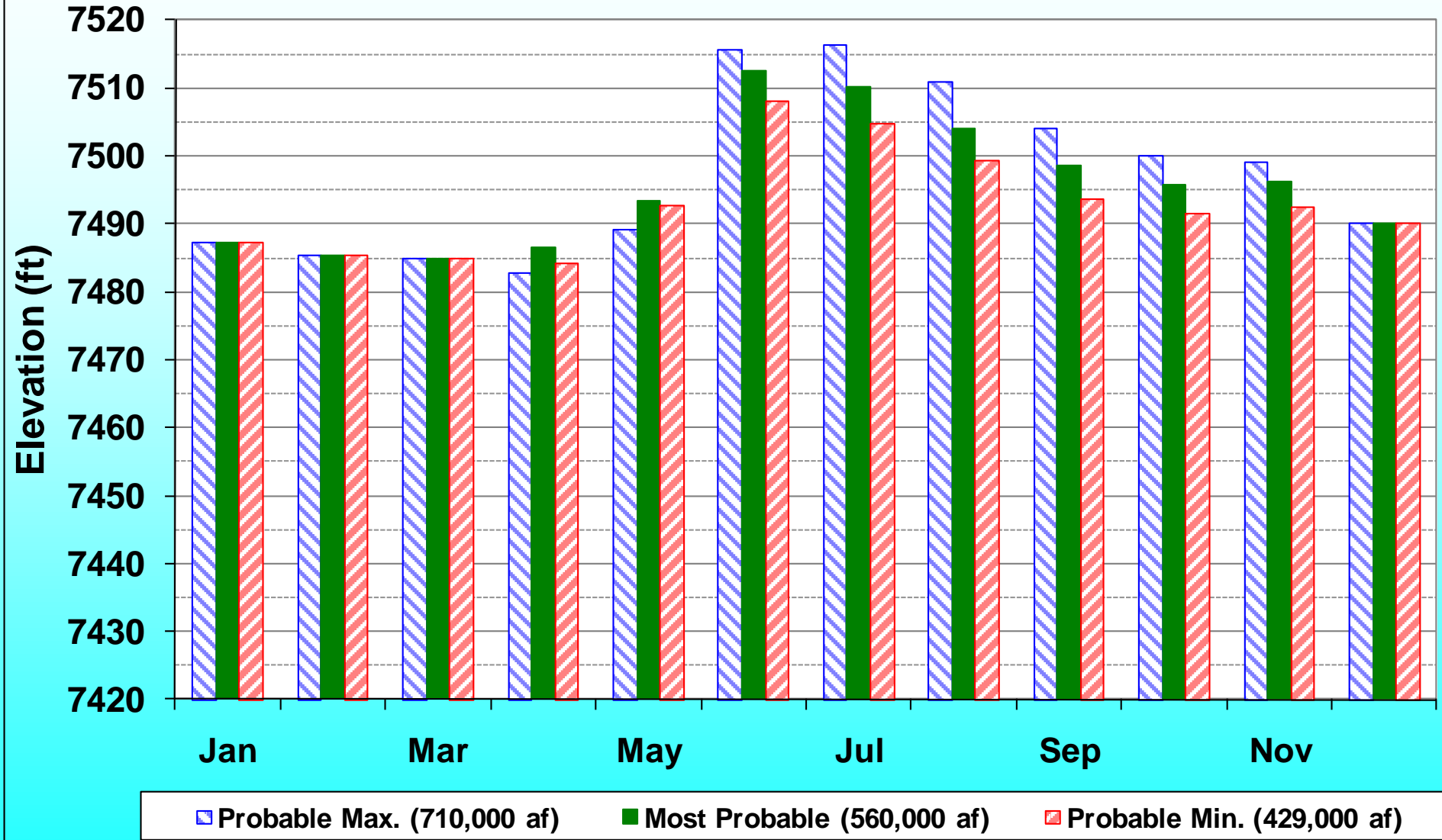
24 MONTH STUDY

Unregulated Blue Mesa Inflow

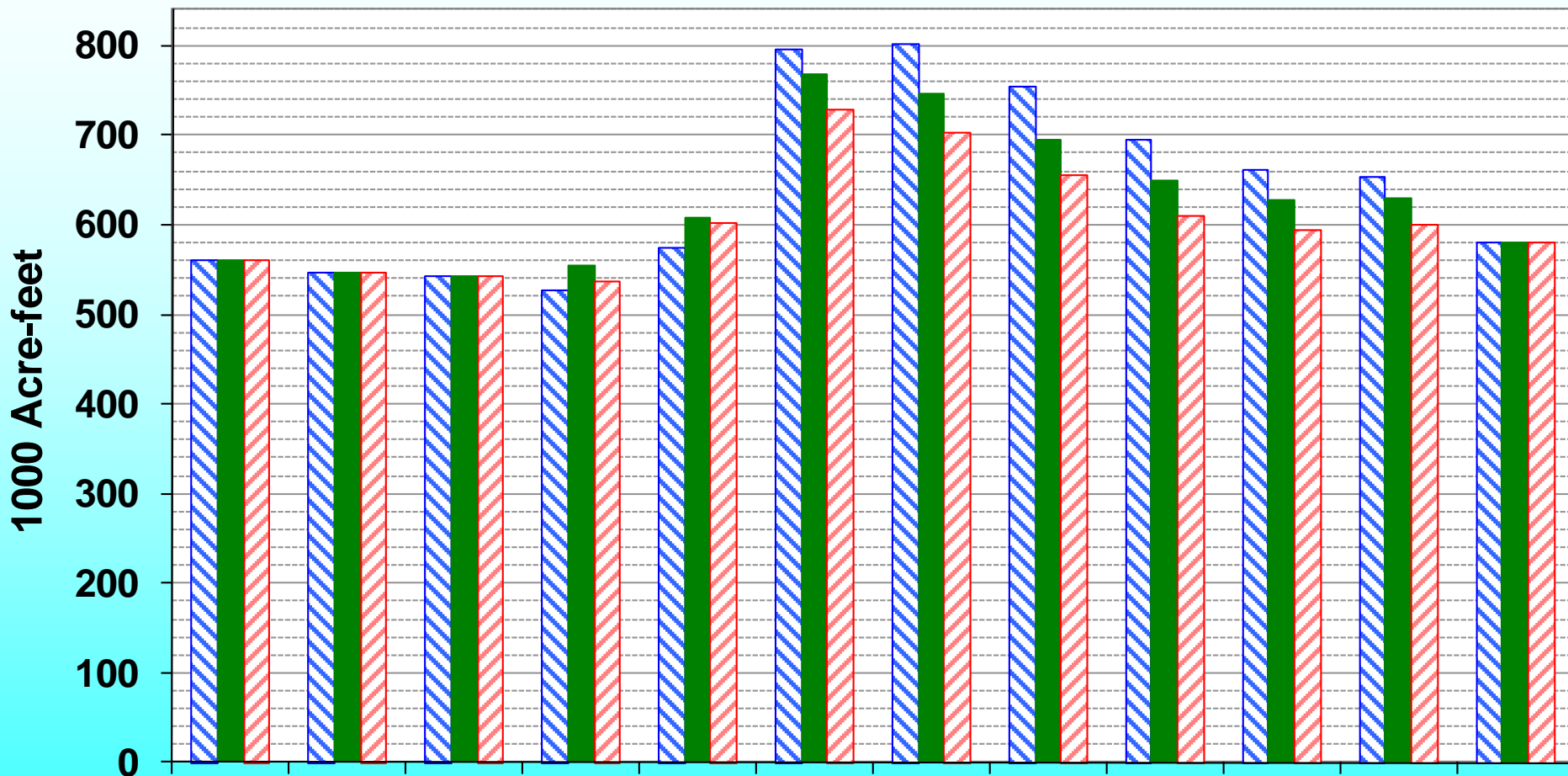
Monthly Average



Blue Mesa Elevation End of Month



Blue Mesa Content End of Month

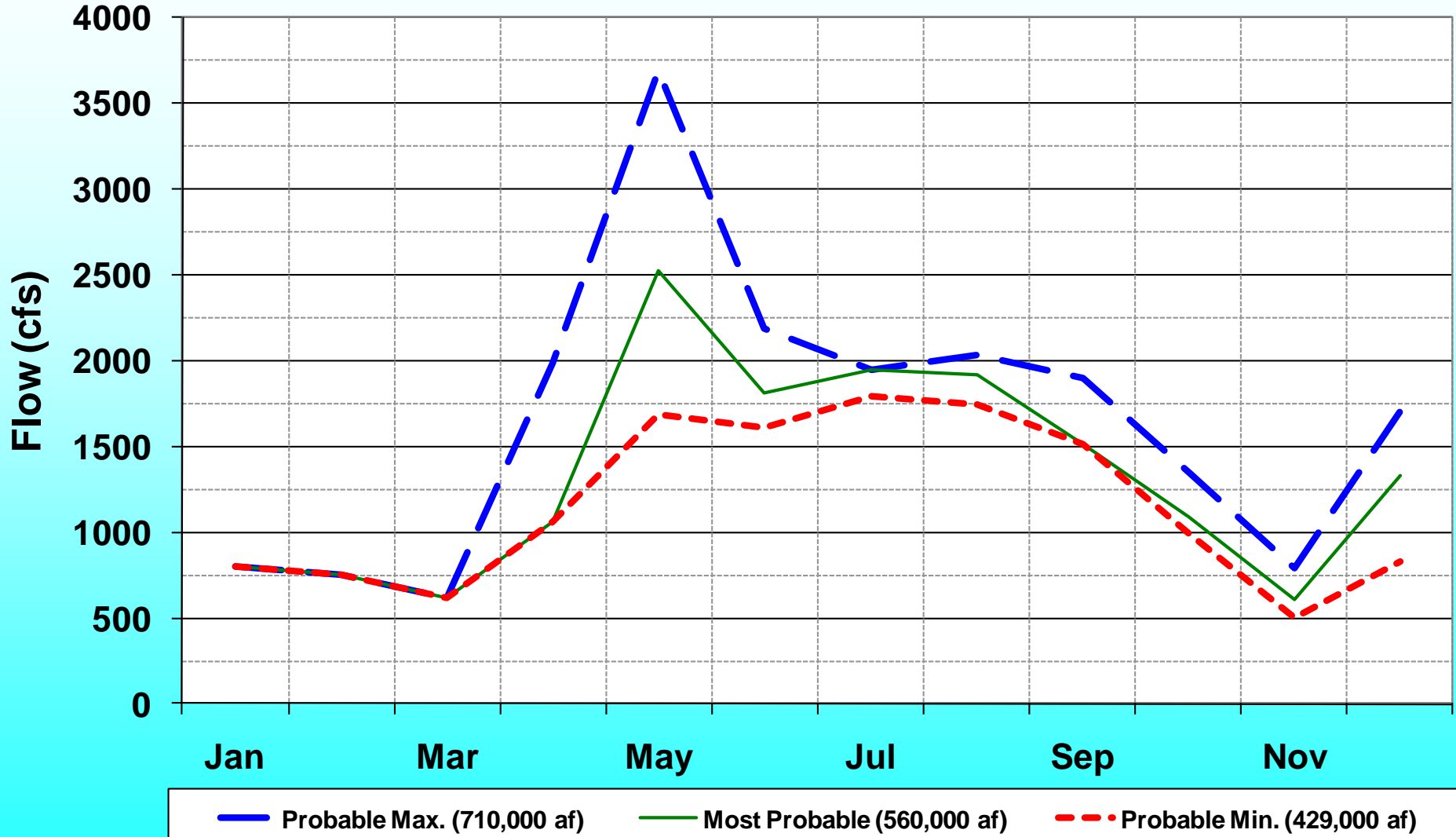


▣ Probable Max. (710,000 af)

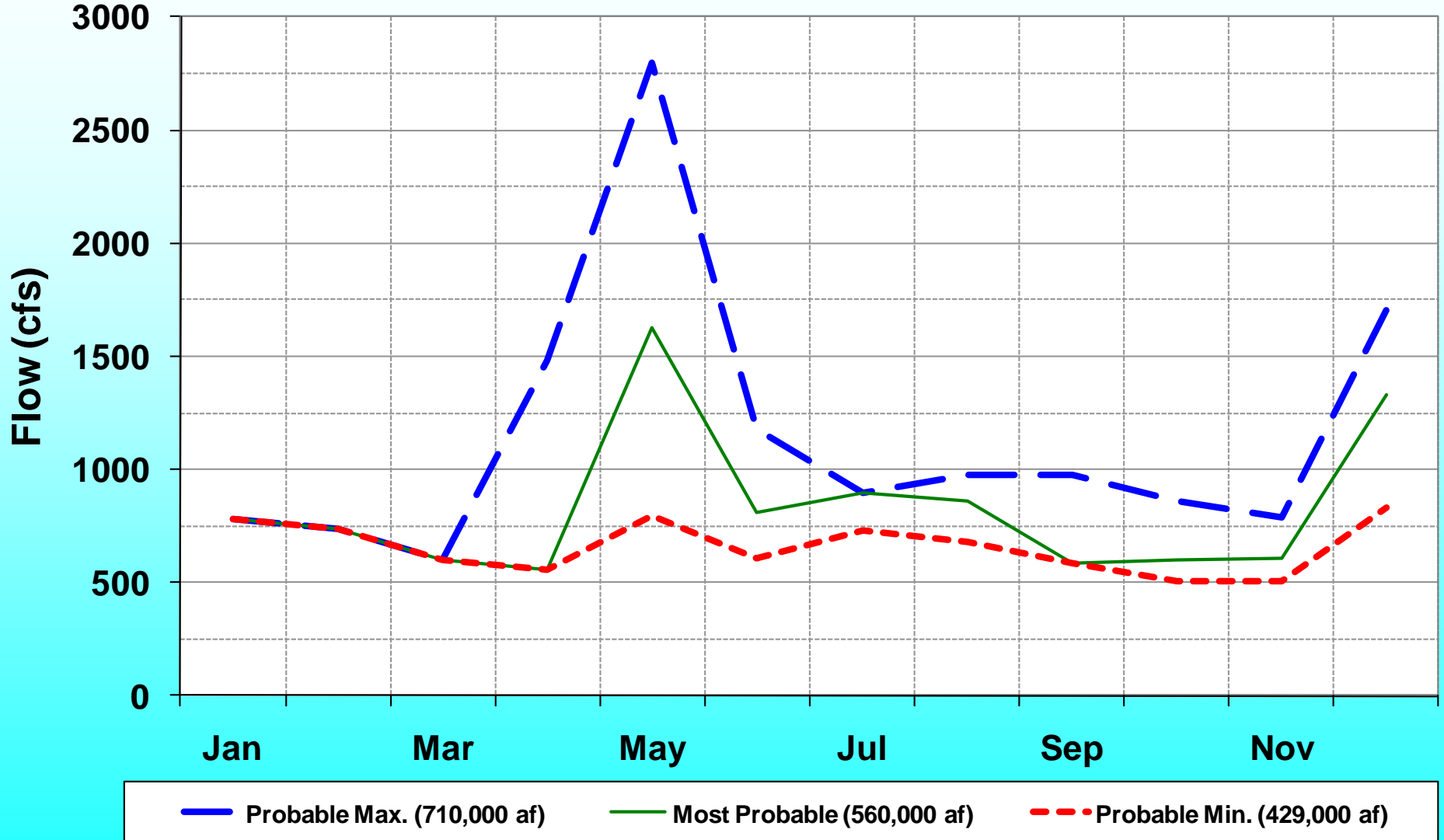
■ Most Probable (560,000 af)

▤ Probable Min. (429,000 af)

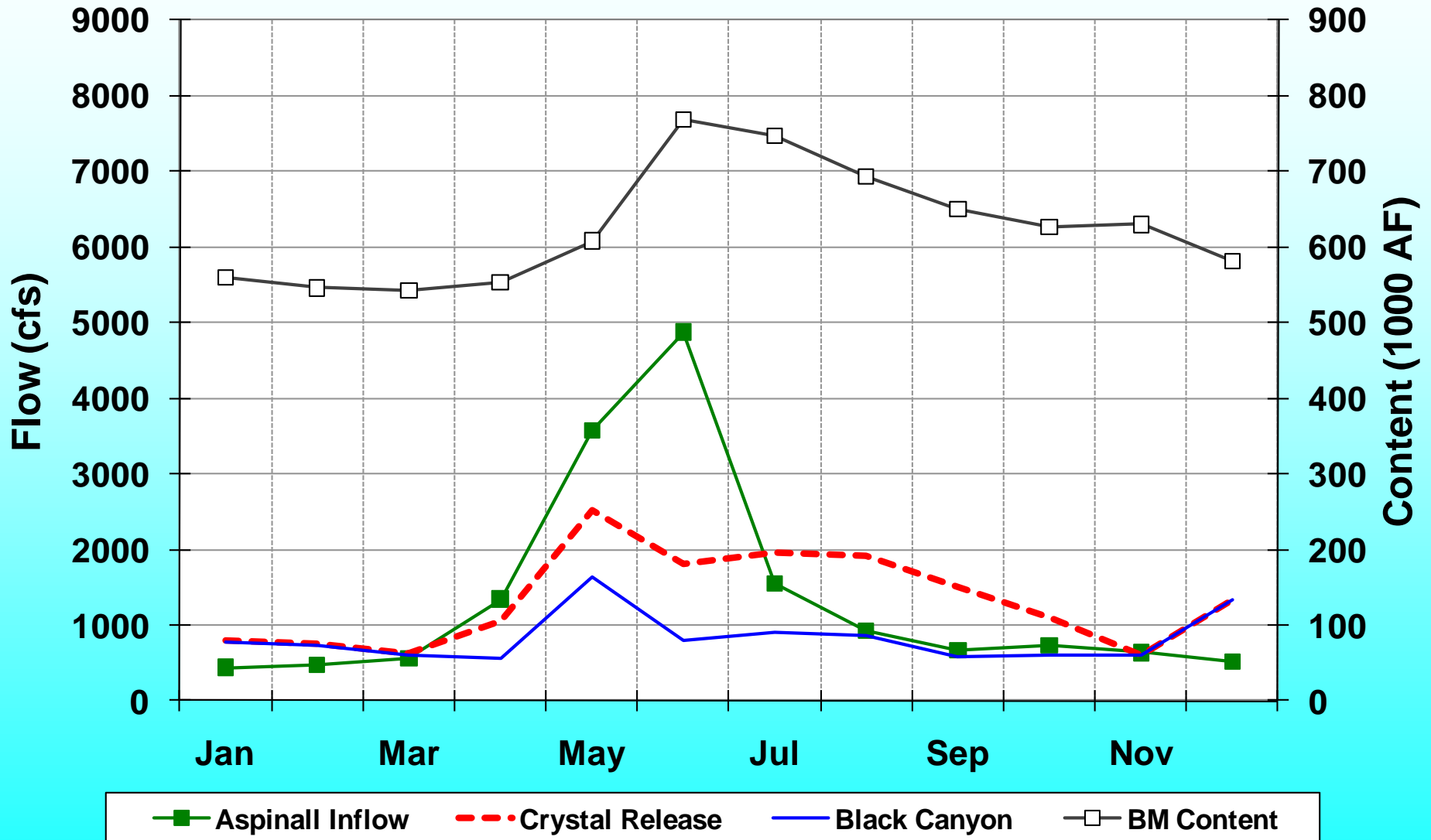
Crystal Release Monthly Average



Black Canyon Monthly Average



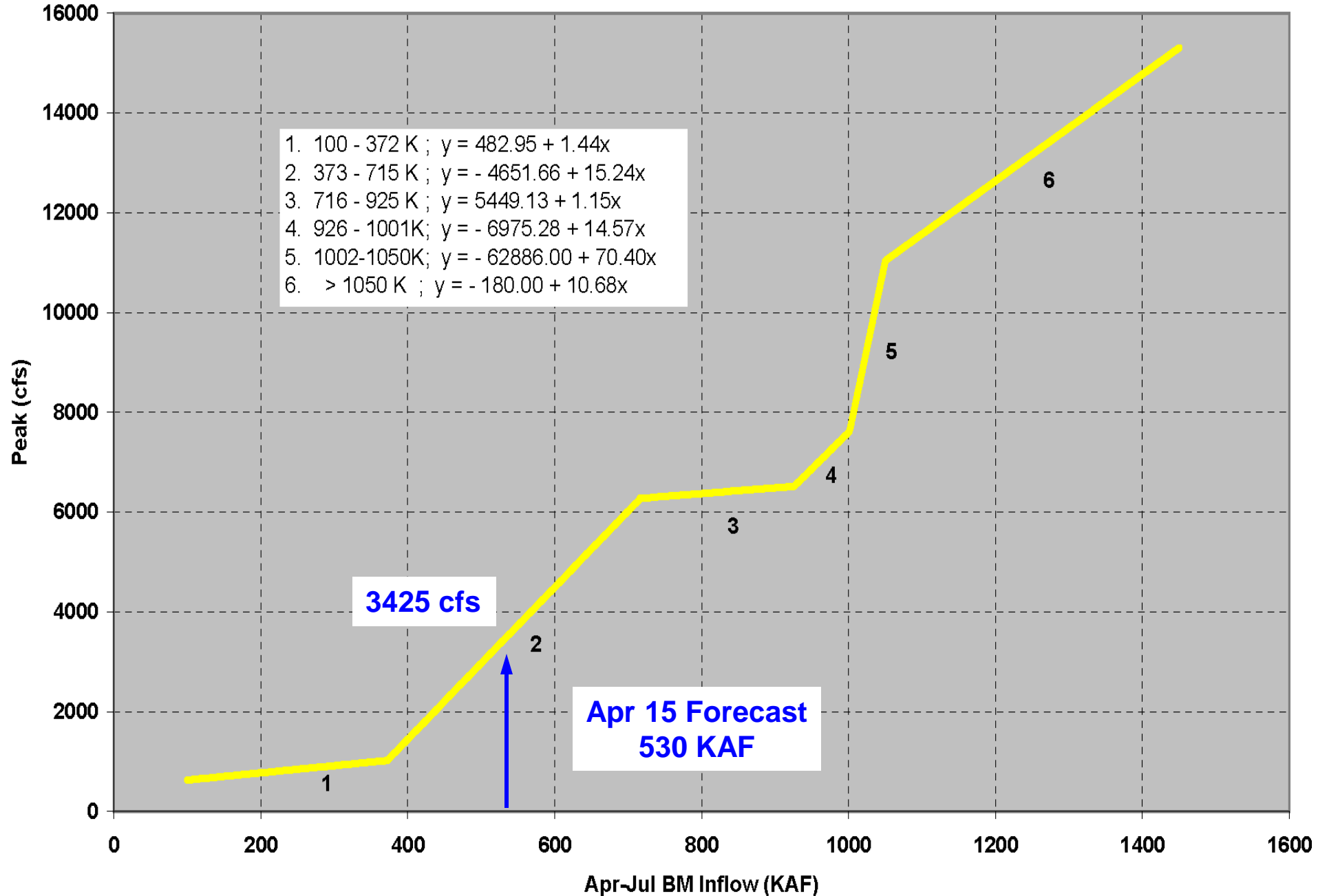
Most Probable Monthly Average



PROJECTED RUNOFF OPERATIONS

Black Canyon Peak Flow Determination

based on Blue Mesa May 1 forecast



Black Canyon Peak

based on Apr 15th forecast

