

Aspinall Operations Meeting

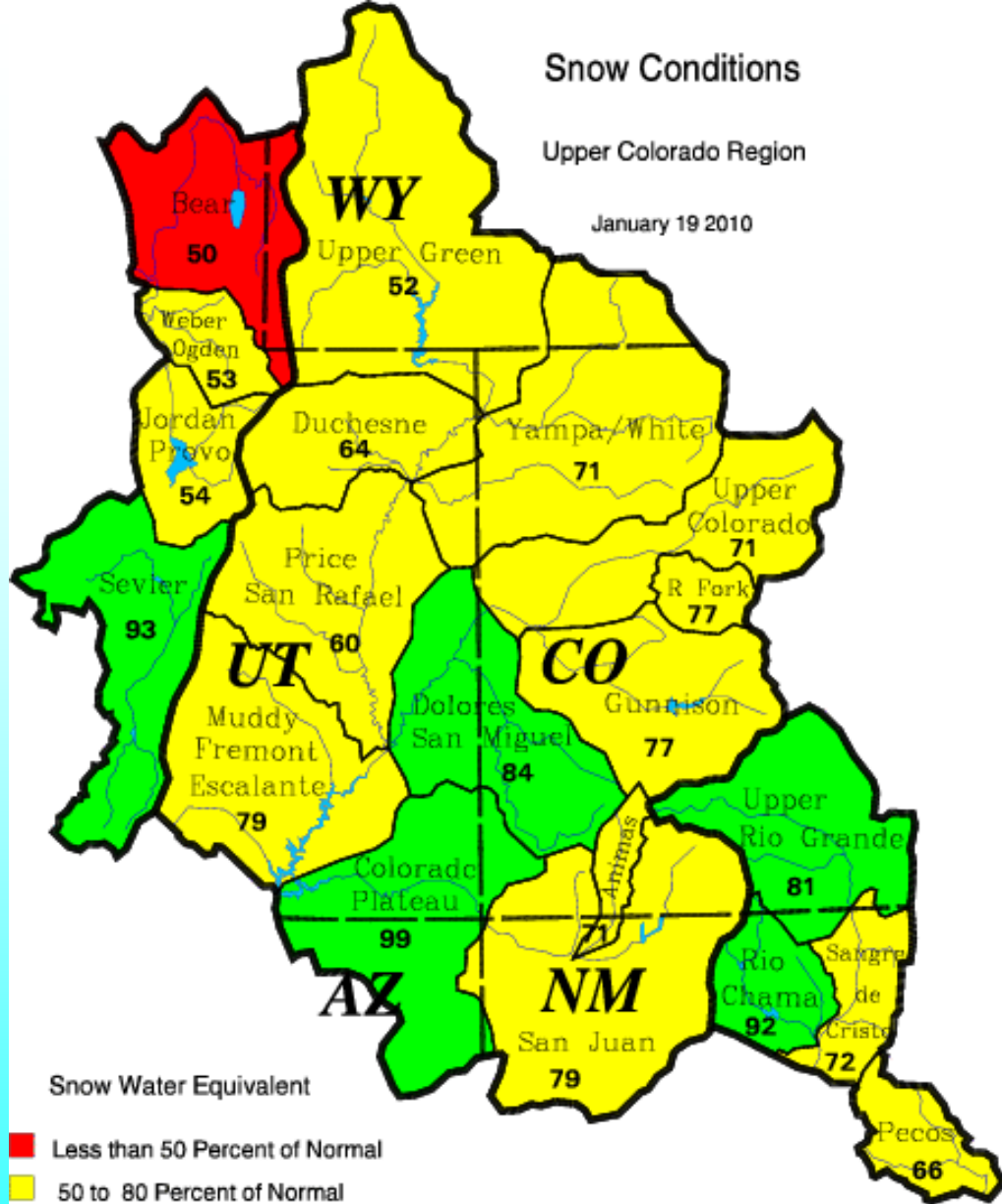
January 21, 2010



Snow Conditions

Upper Colorado Region

January 19 2010



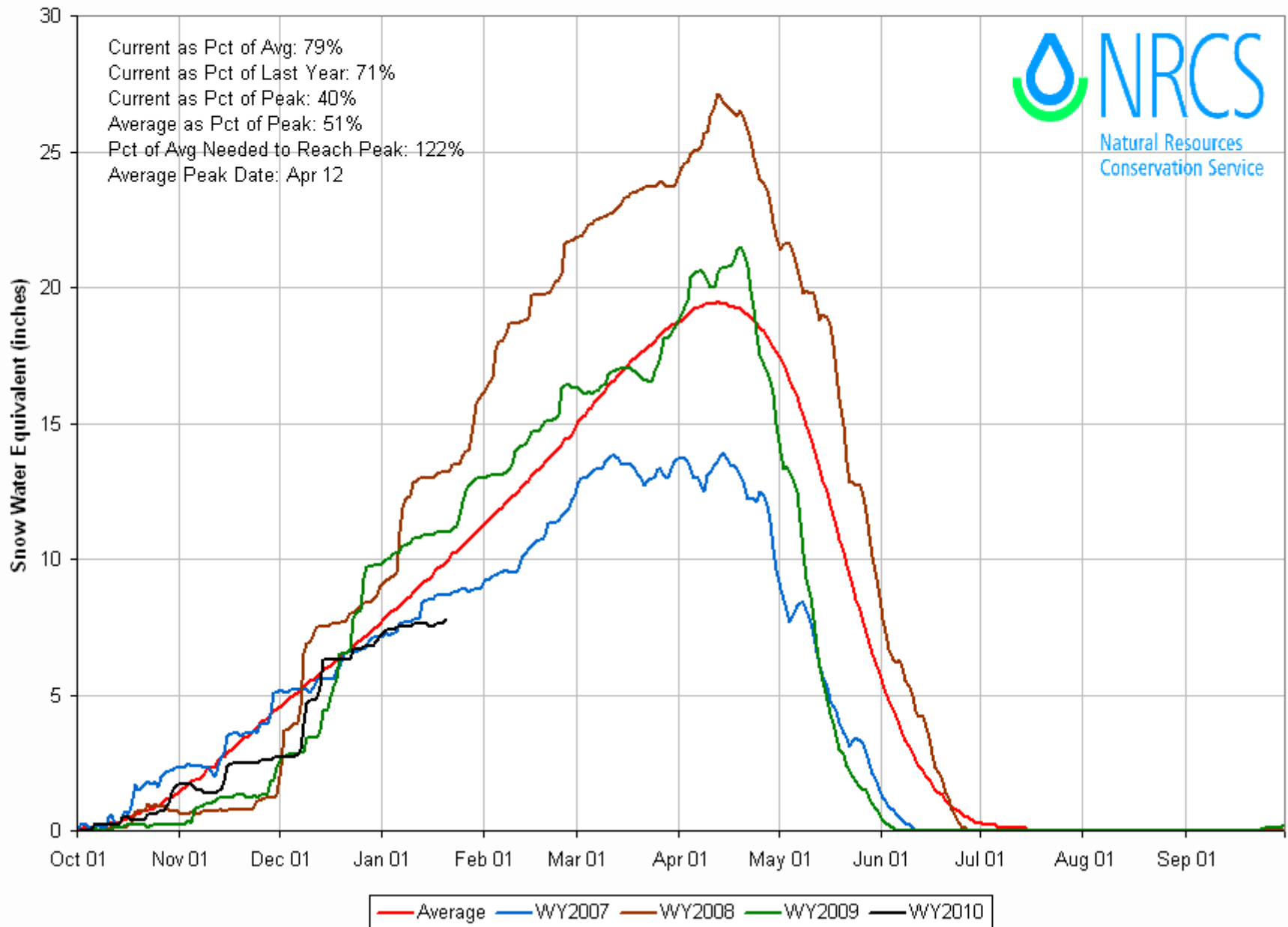
Snow Water Equivalent

- Less than 50 Percent of Normal
- 50 to 80 Percent of Normal
- 80 to 120 Percent of Normal
- 120 to 150 Percent of Normal
- Greater than 150 Percent of Normal

Upper Colorado
GIS
Region

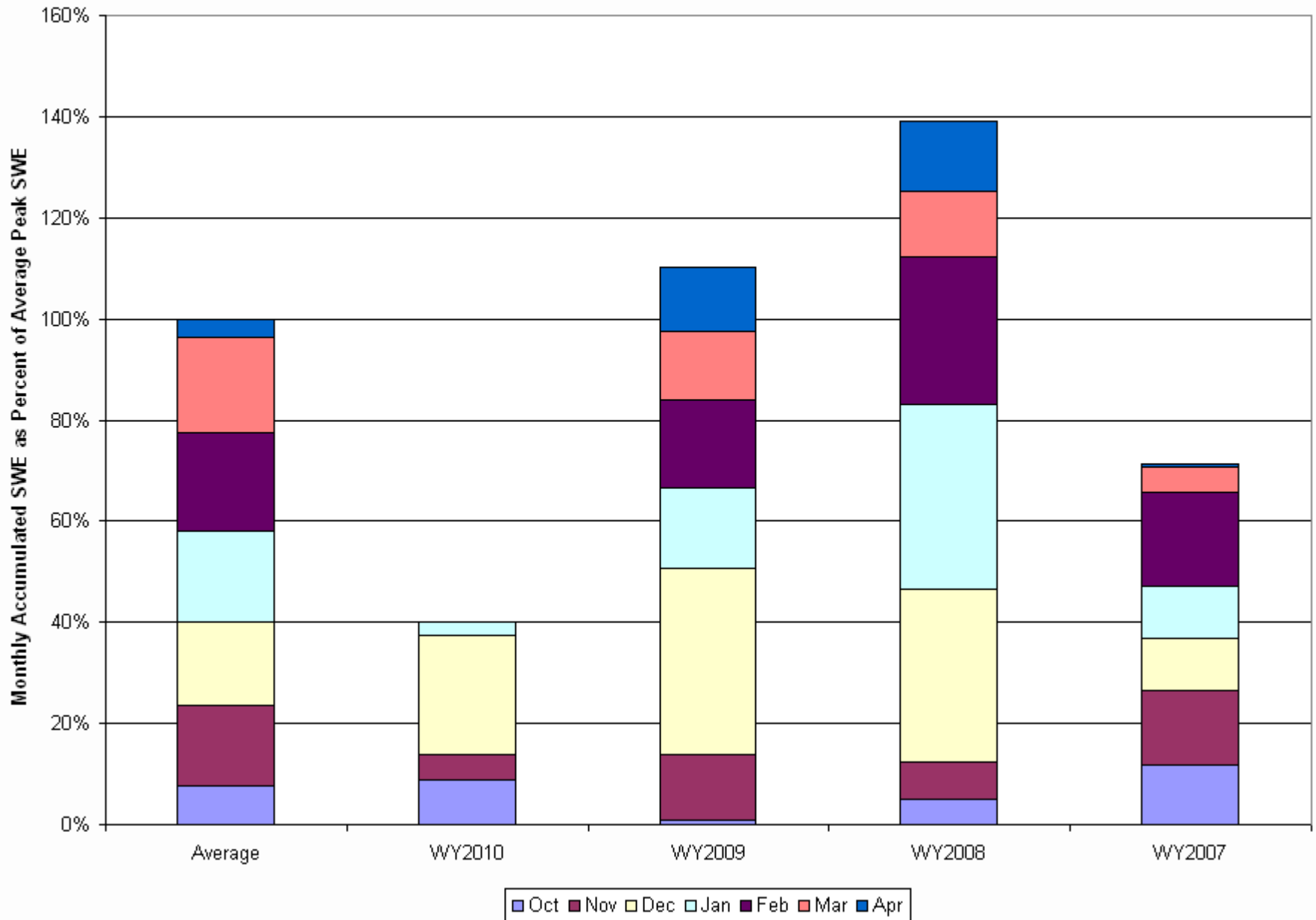
Gunnison River Basin Time Series Snowpack Summary

Based on Provisional SNOTEL data as of Jan 20, 2010

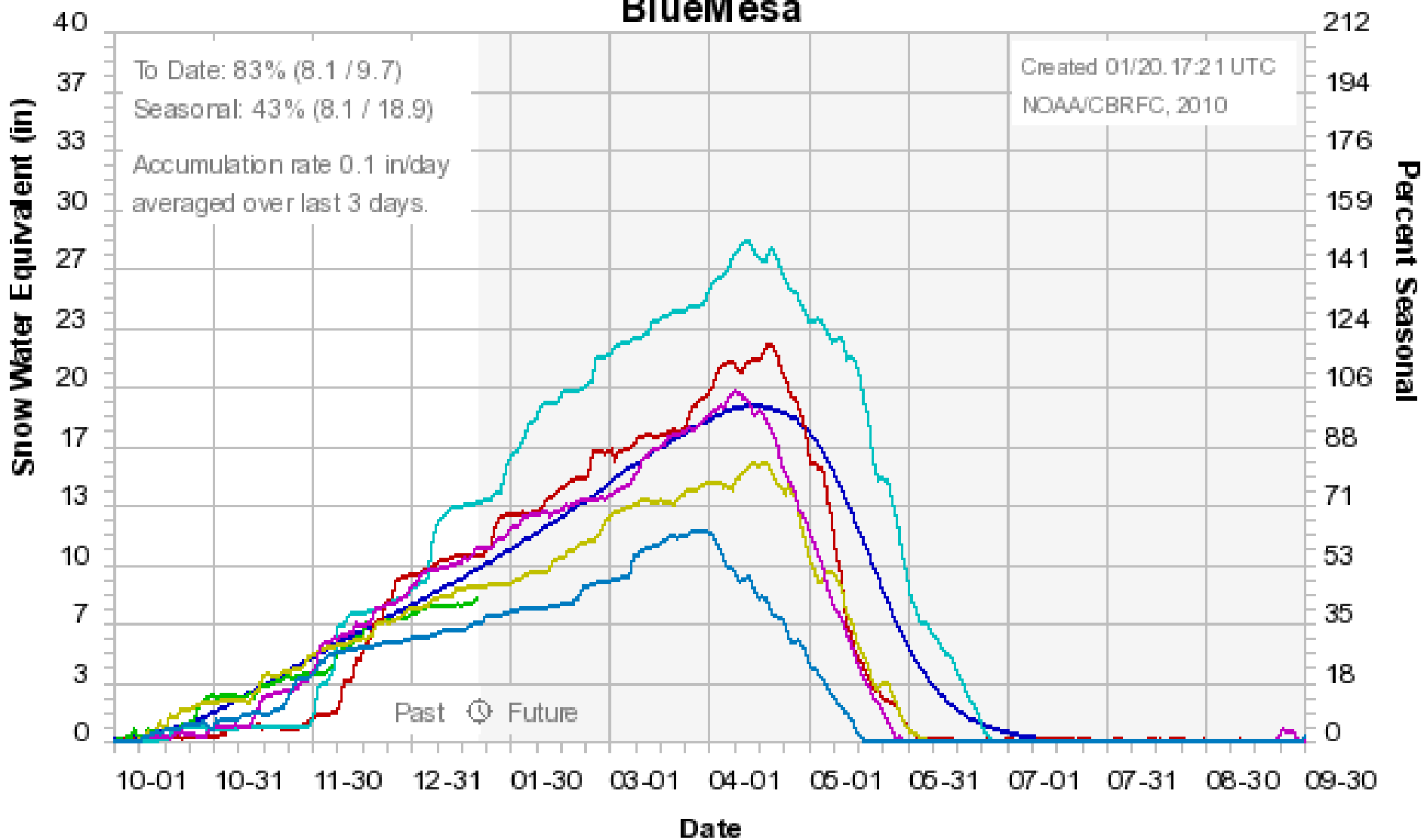


Gunnison River Basin Time Series Monthly Snowpack Summary

Based on Provisional SNOTEL data as of Jan 20, 2010



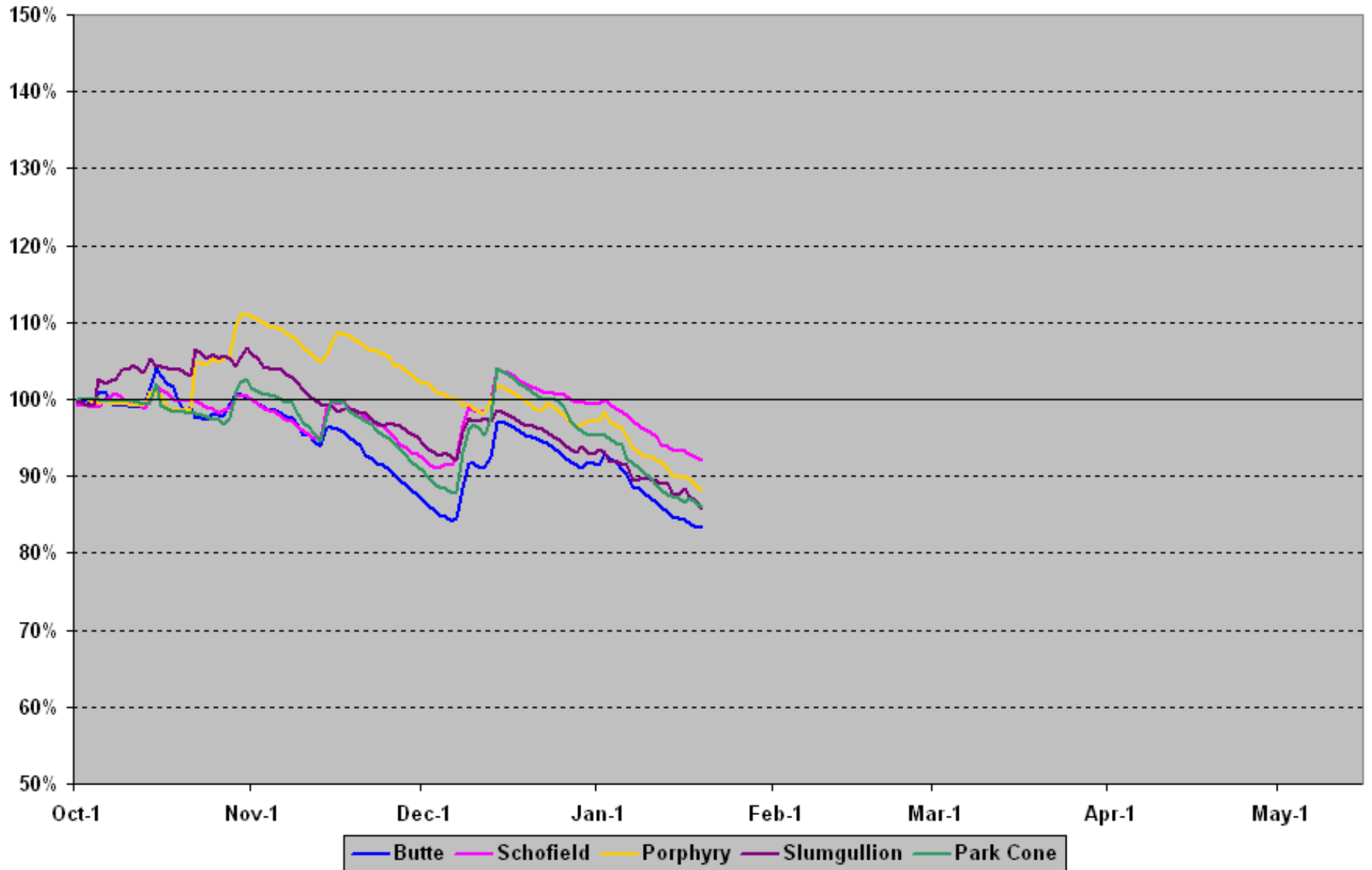
Colorado Basin River Forecast Center BlueMesa



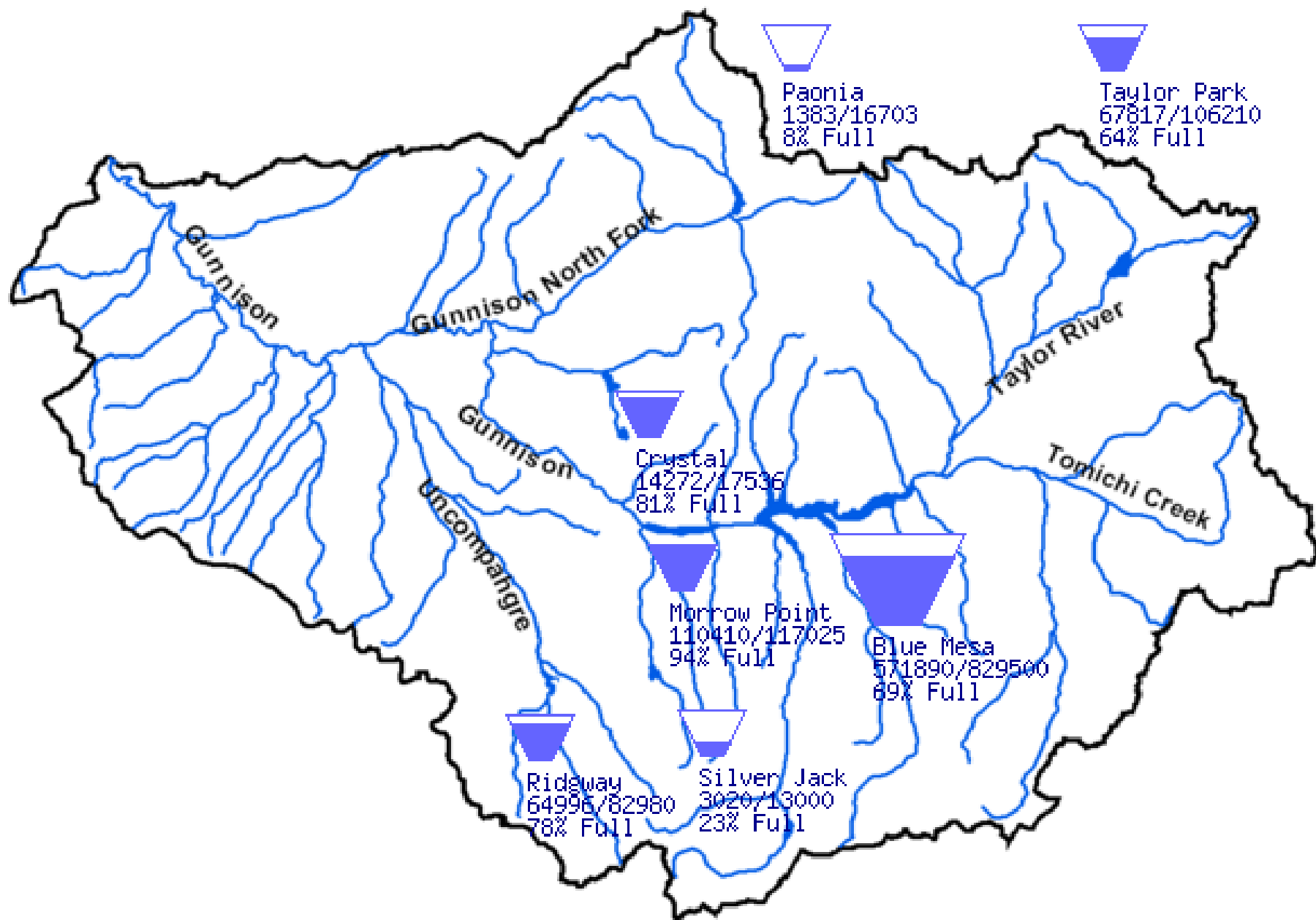
avg 2010 2009 2008 2007 2006 2002

Upper Gunnison Basin SWE % of Average Daily

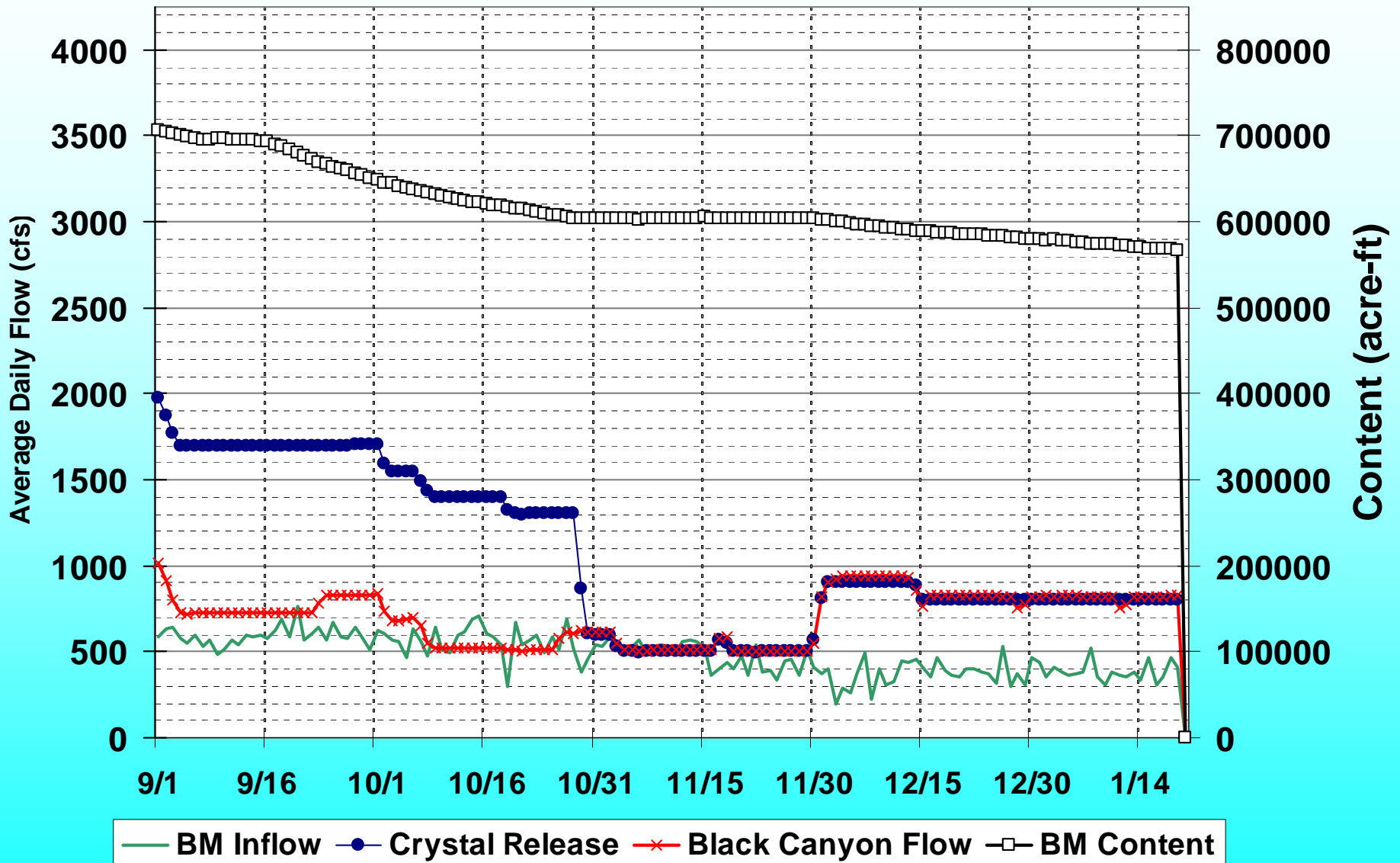
(Scaled to % of Avg Annual Peak)



Gunnison River Basin, CO

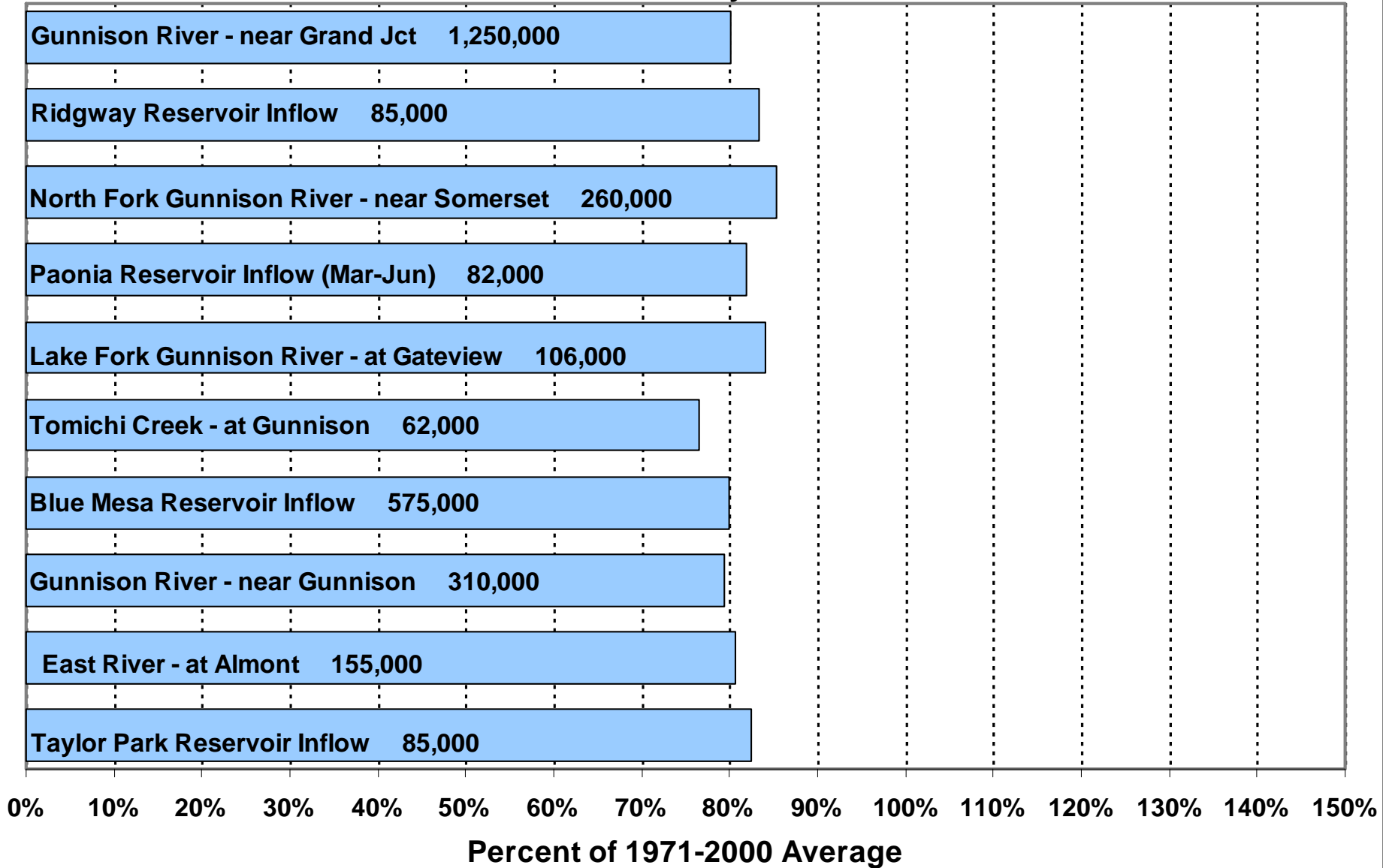


September 2009 - January 2010



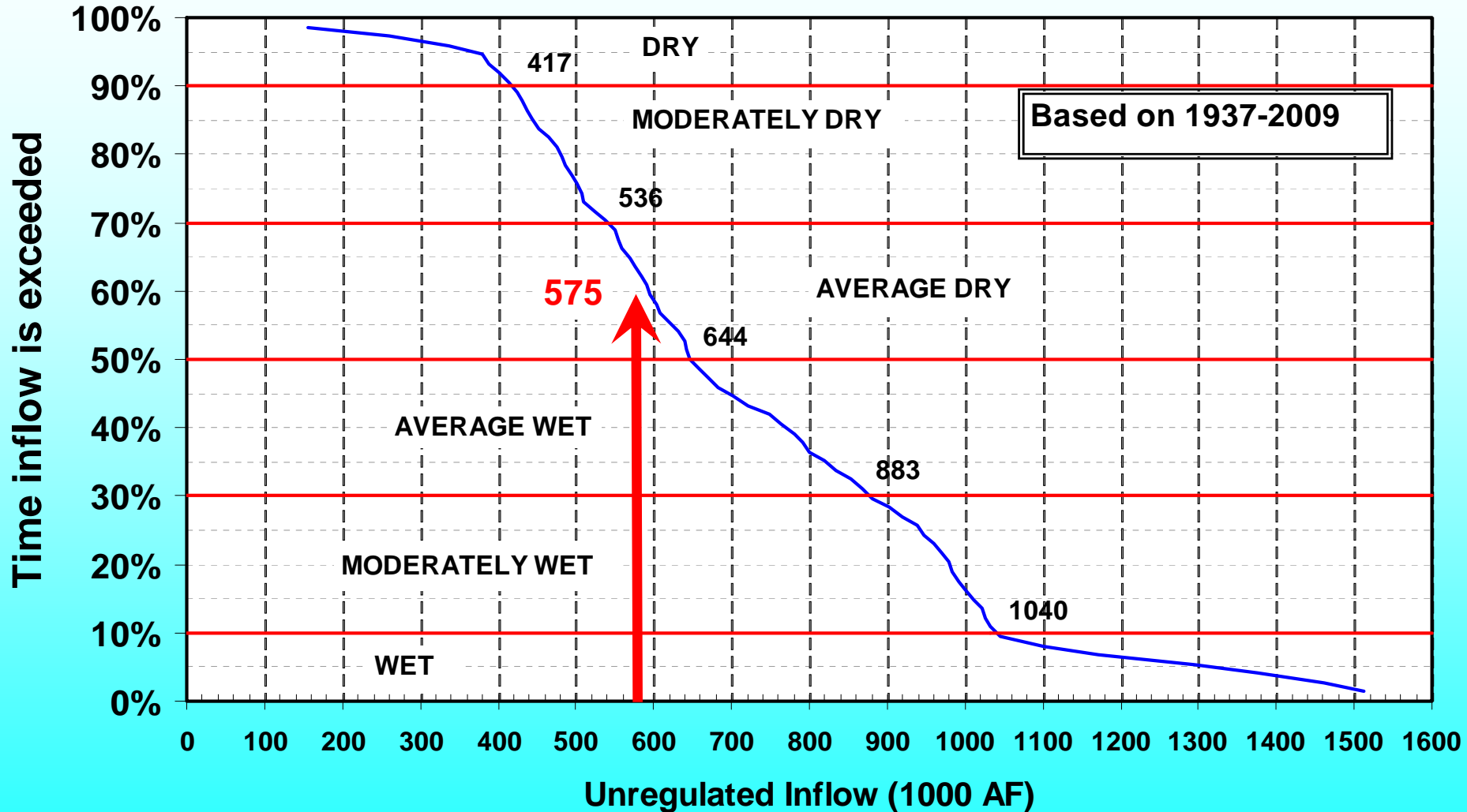
Forecasted April-July Runoff

As of January 1st



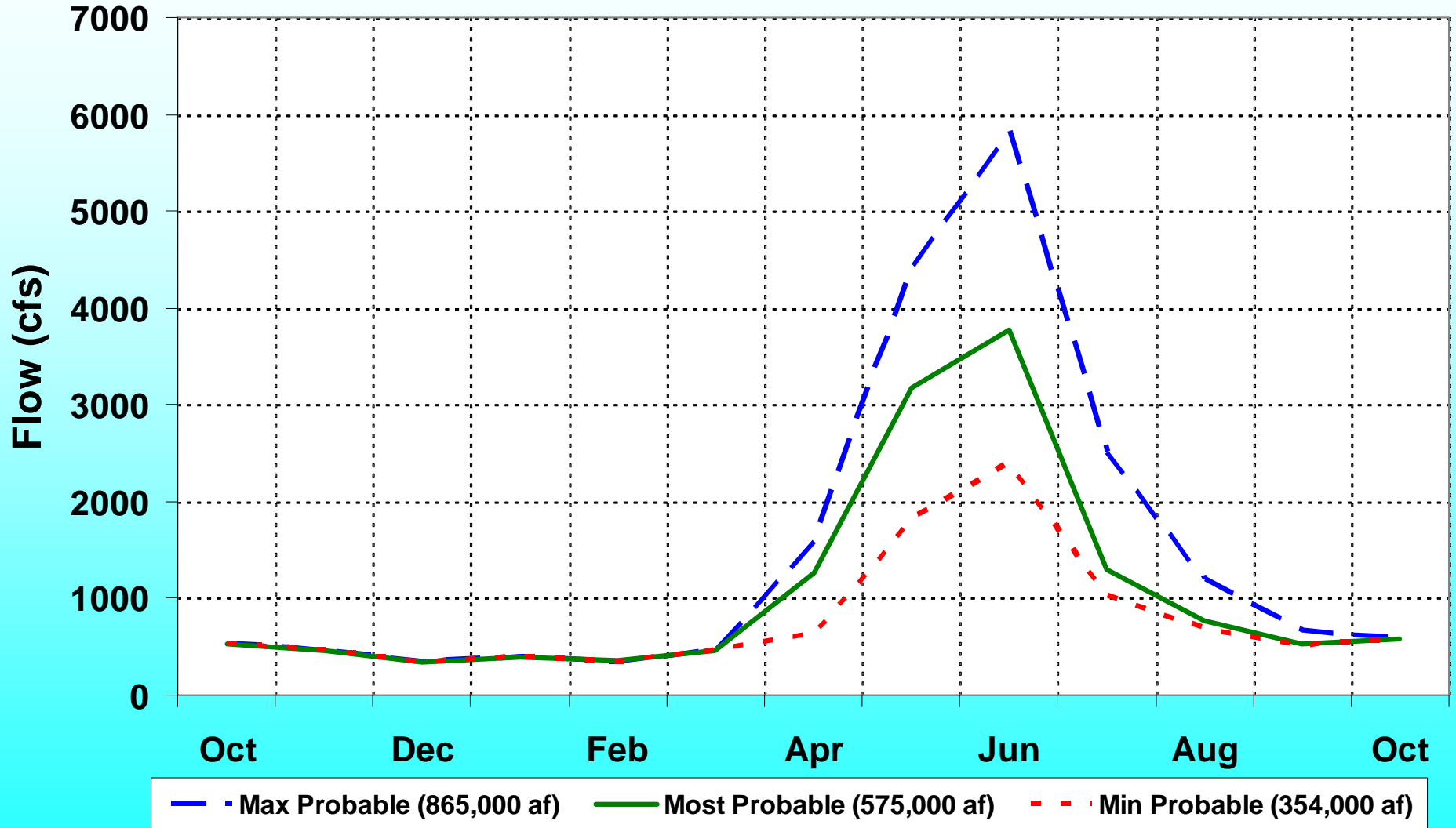
Blue Mesa Reservoir

April - July Unregulated Inflow



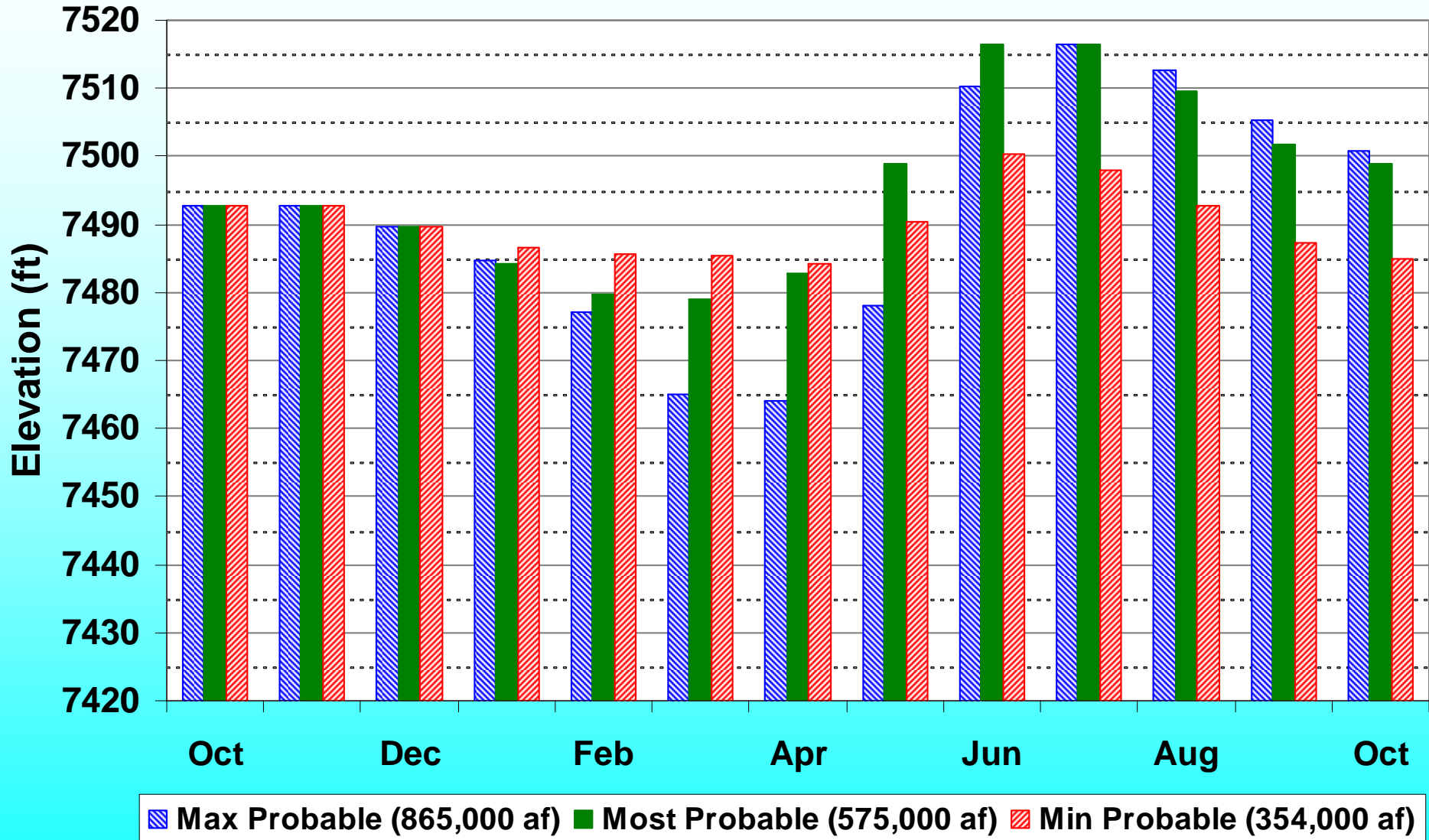
Unregulated Blue Mesa Inflow

Monthly Average



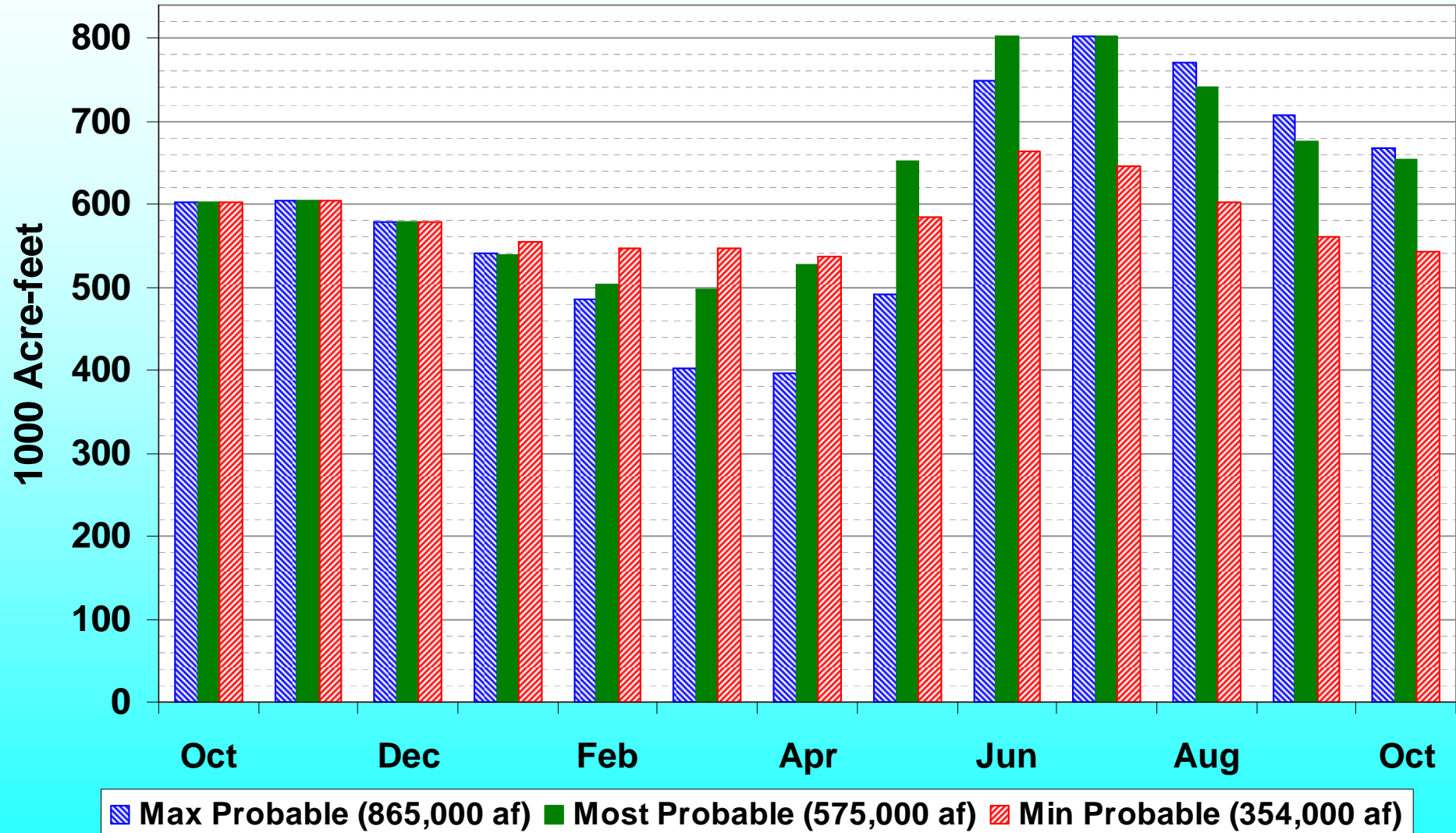
Blue Mesa Elevation

End of Month

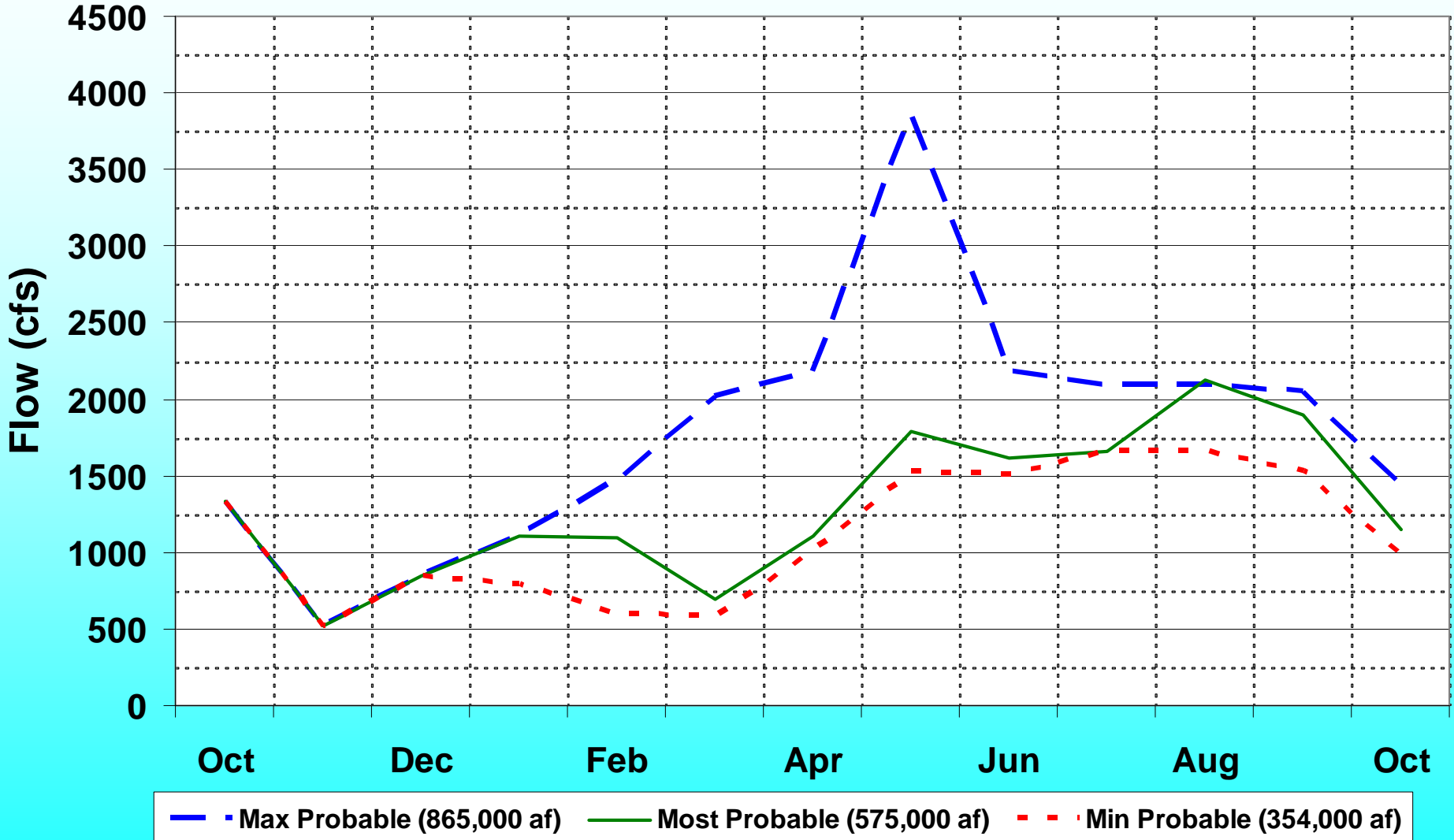


Blue Mesa Content

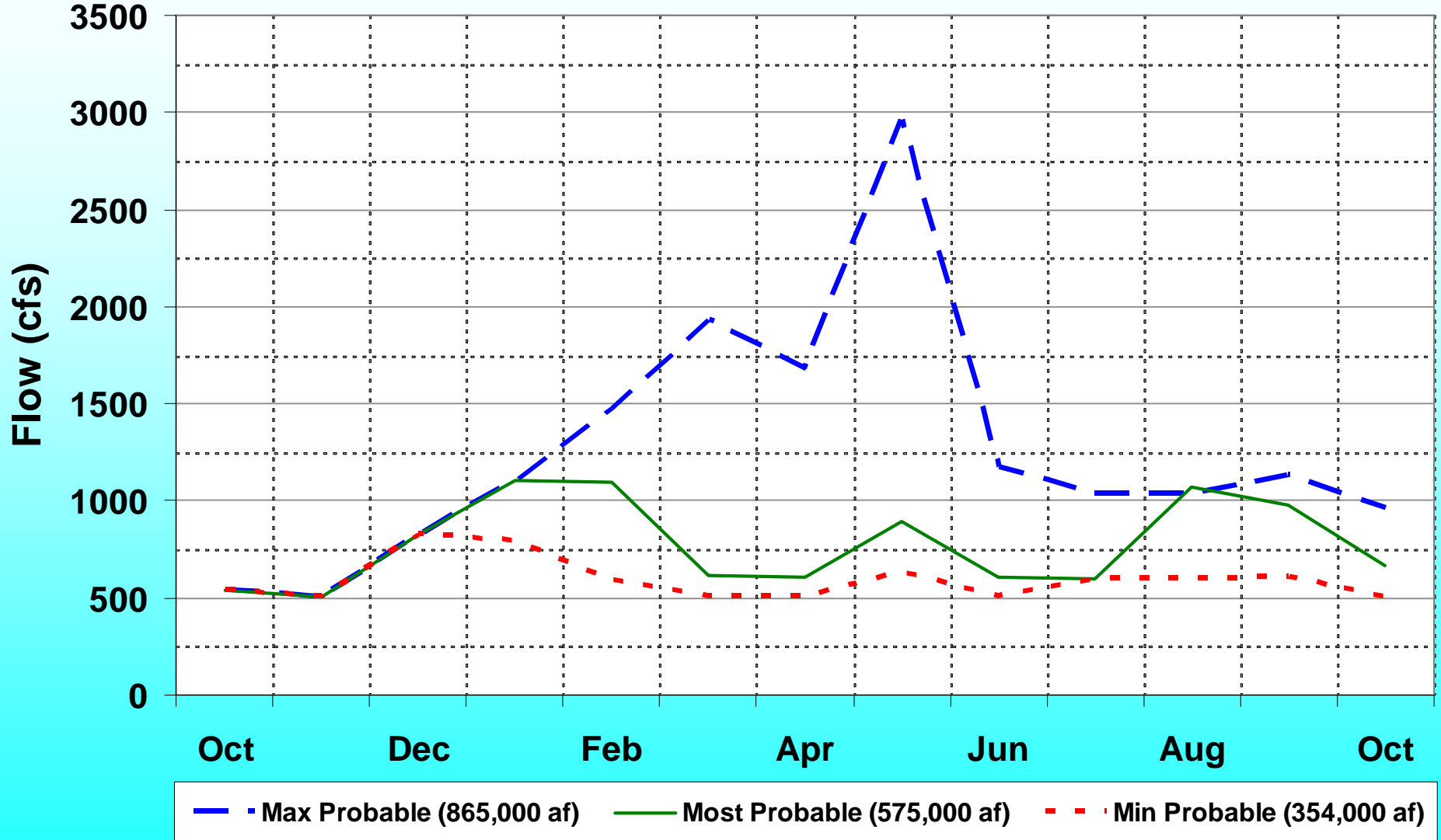
End of Month



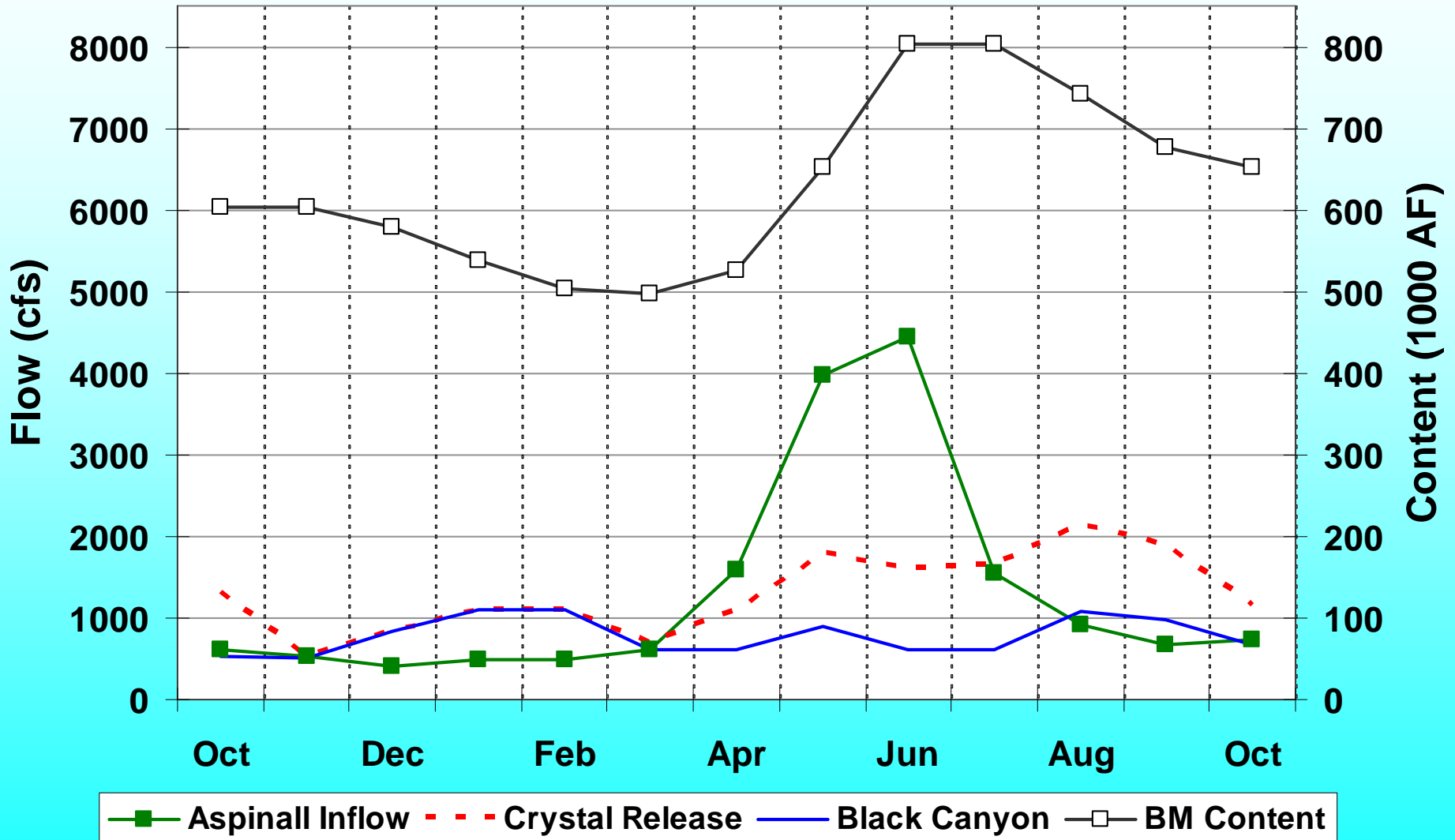
Crystal Release Monthly Average



Black Canyon Monthly Average

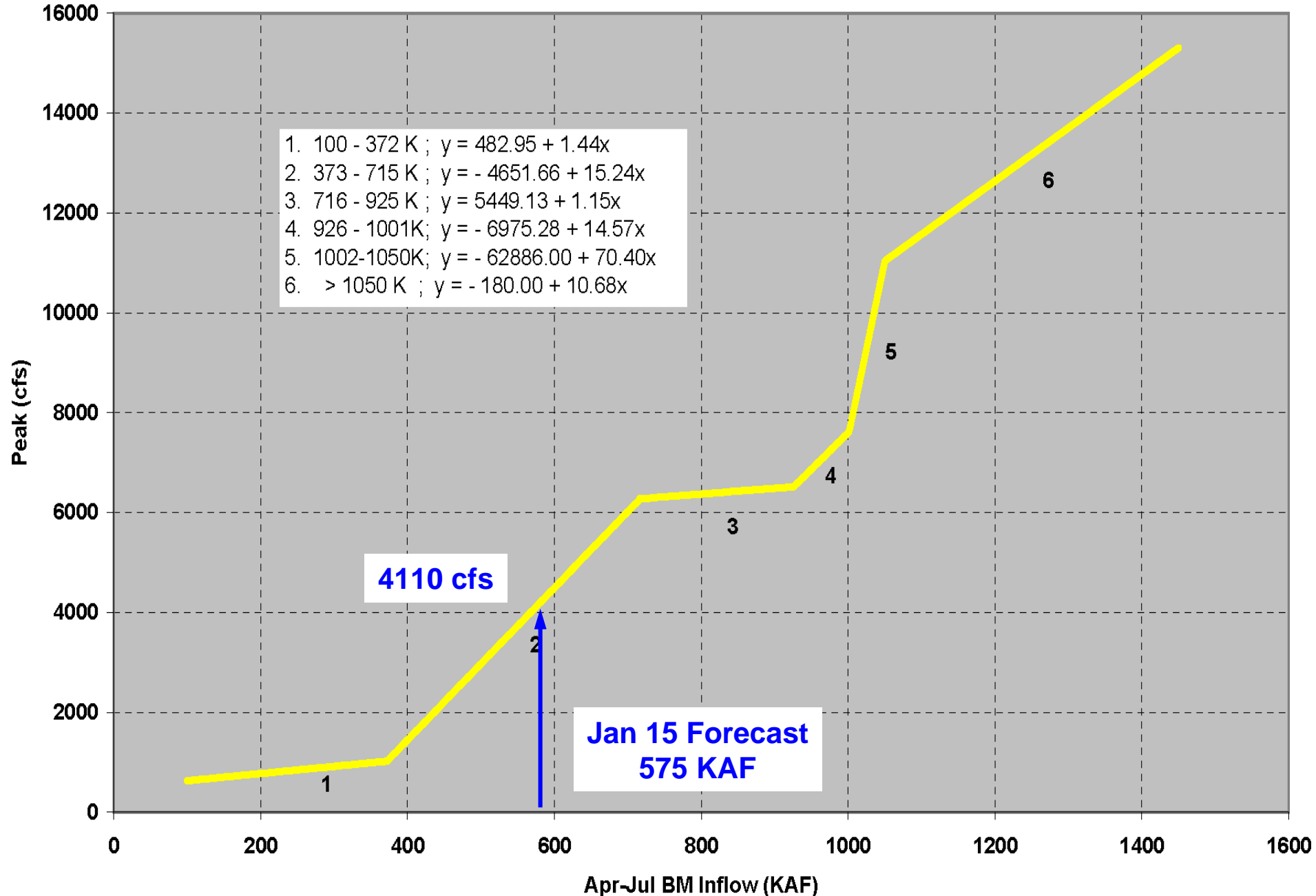


Most Probable Monthly Average



Black Canyon Peak Flow Determination

based on Blue Mesa May 1 forecast



Black Canyon Peak

based on Jan 15th forecast

