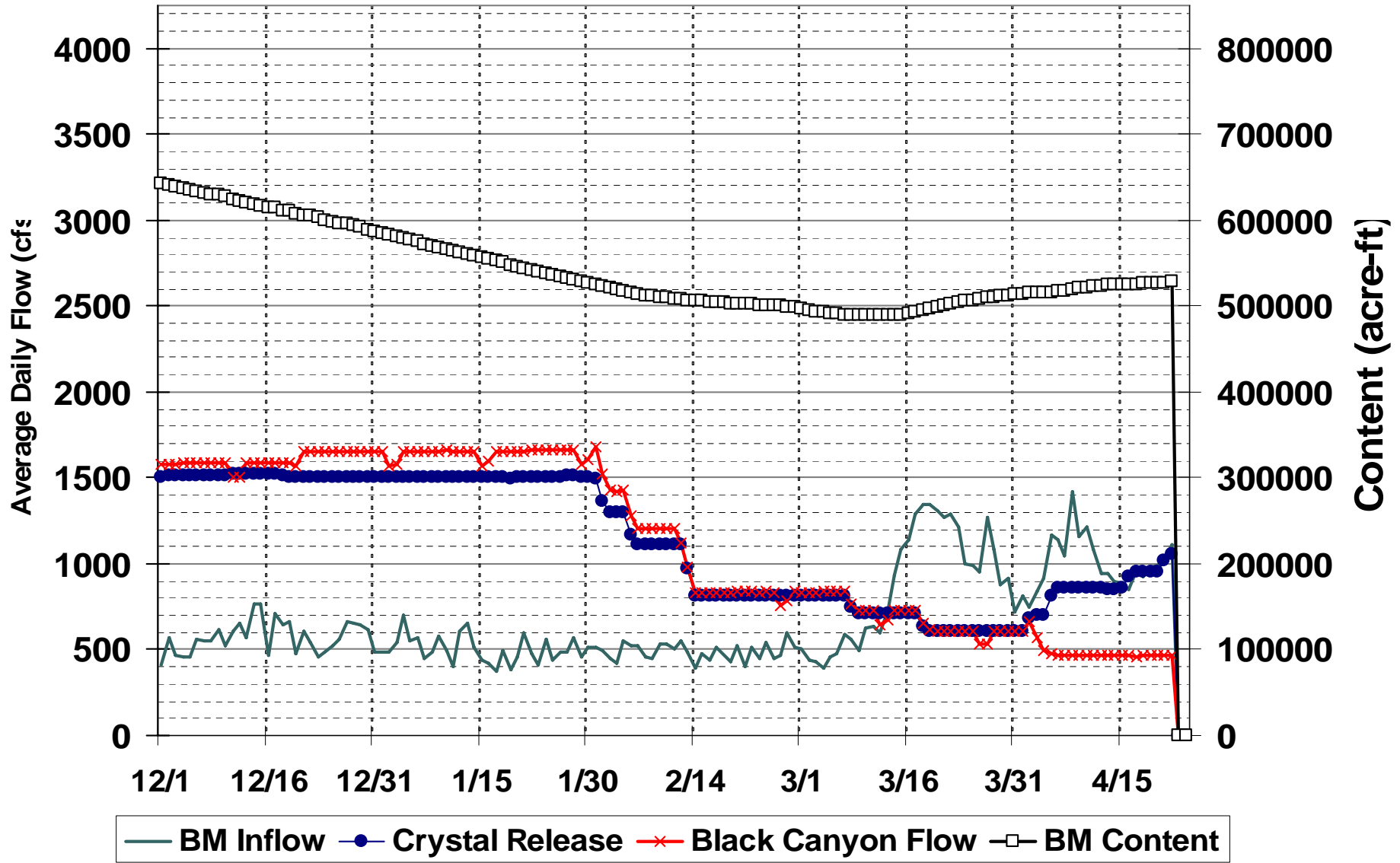


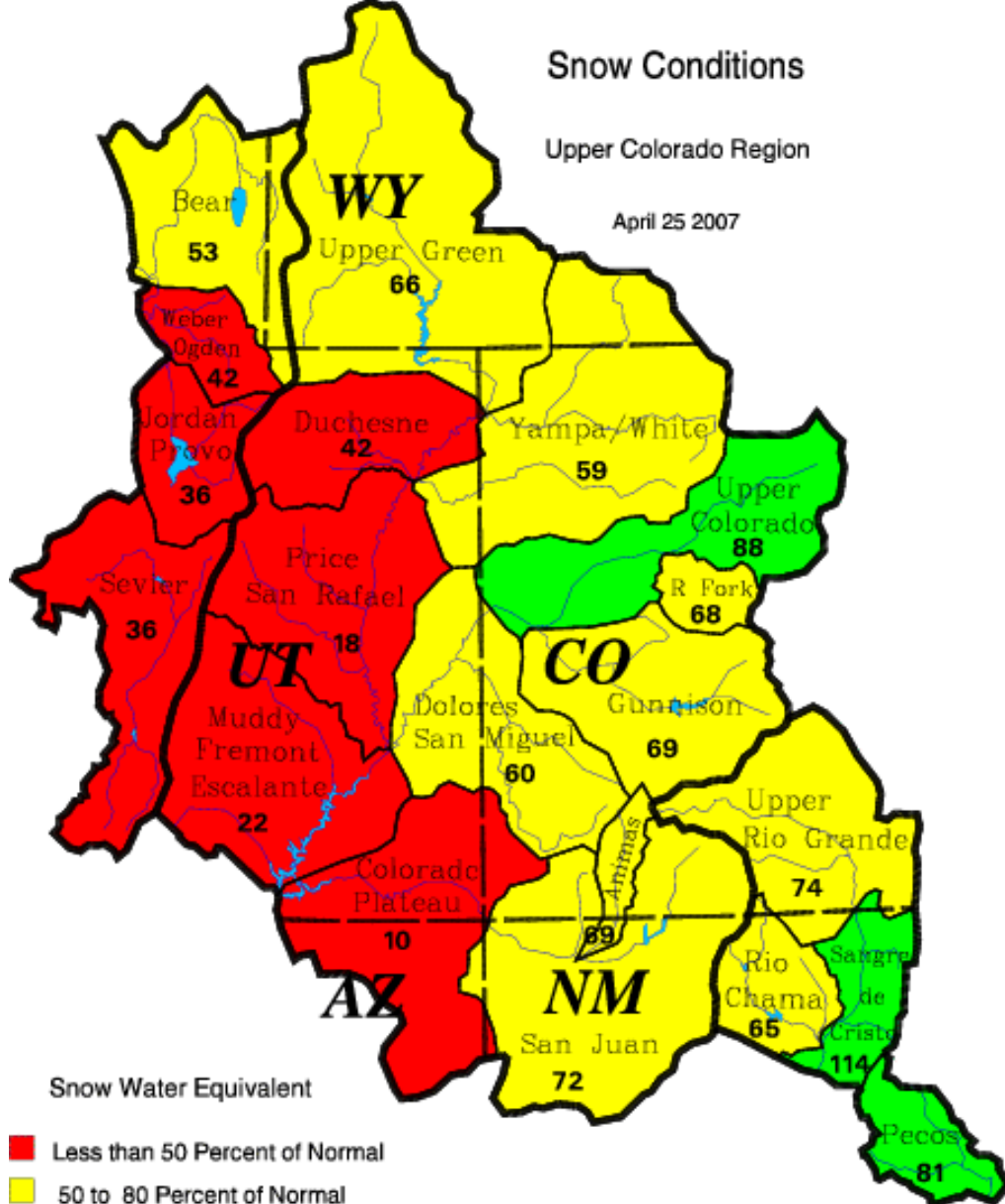
December 2006 - April 2007



Snow Conditions

Upper Colorado Region

April 25 2007



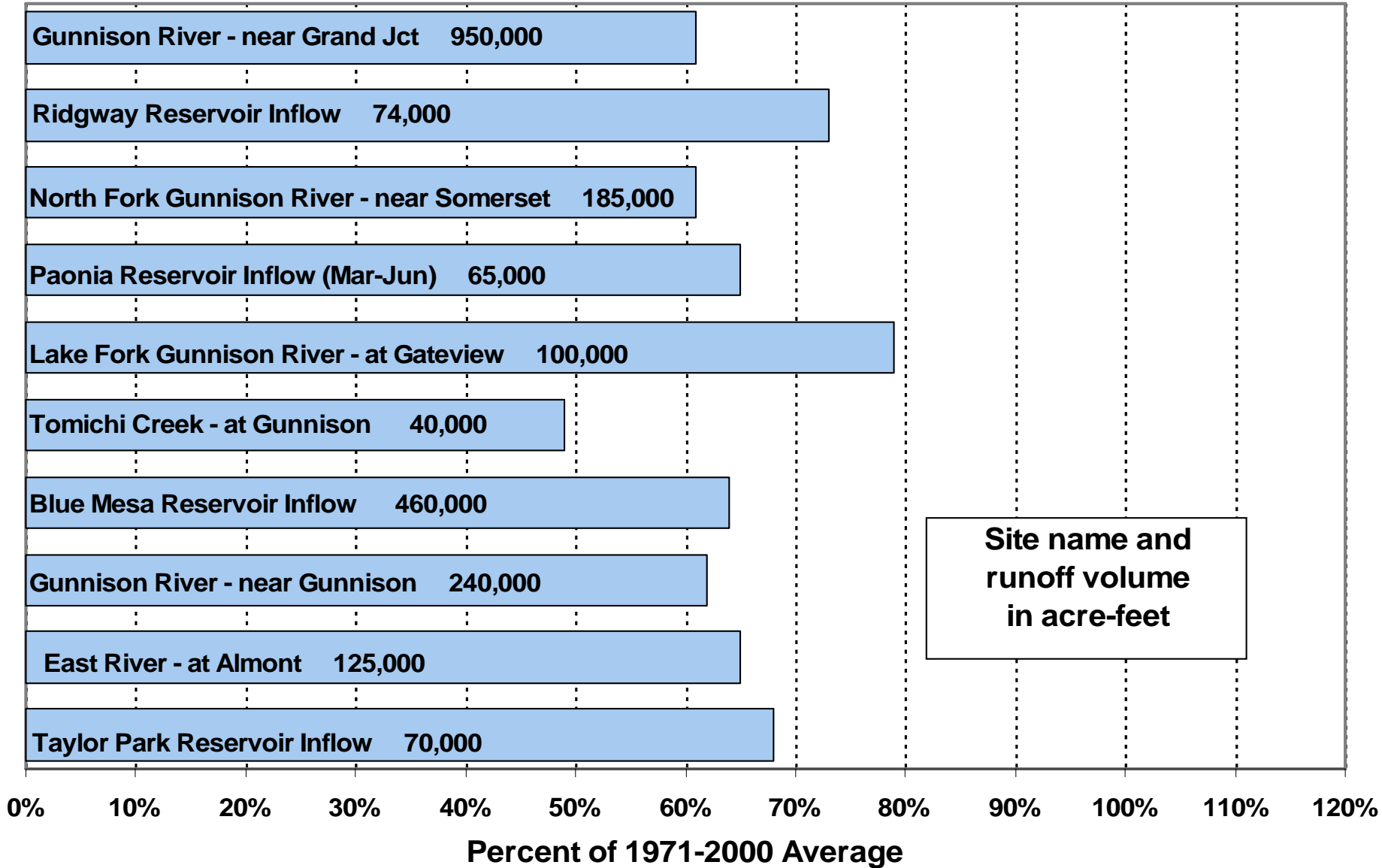
Snow Water Equivalent

- Less than 50 Percent of Normal
- 50 to 80 Percent of Normal
- 80 to 120 Percent of Normal
- 120 to 150 Percent of Normal
- Greater than 150 Percent of Normal

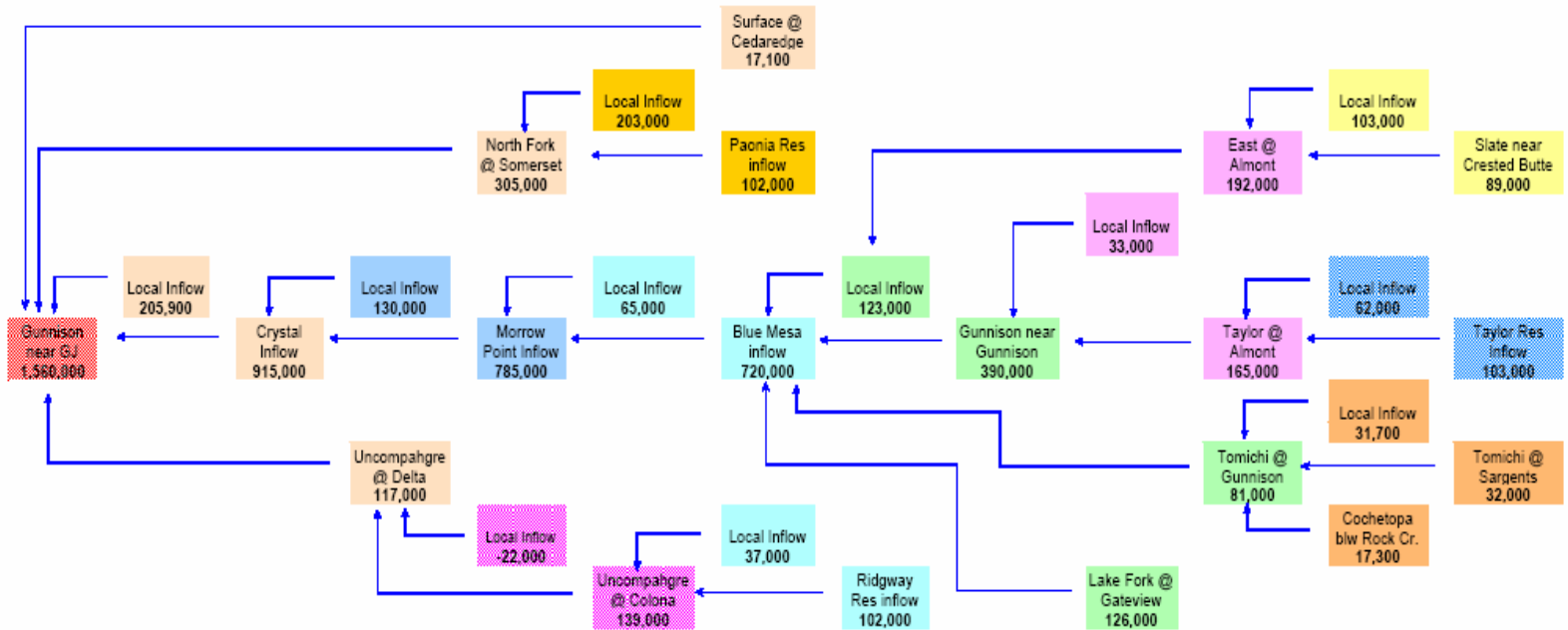
Upper Colorado
GIS
Region

Forecasted April-July Runoff

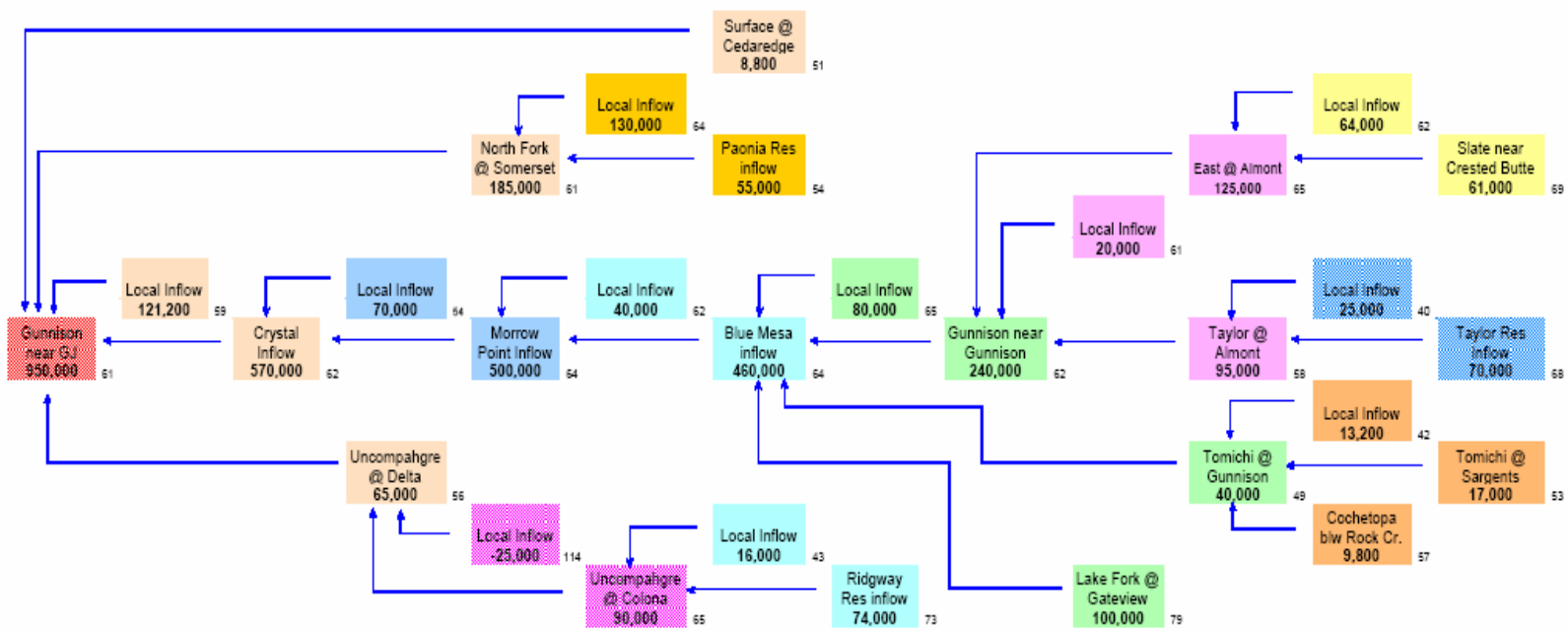
As of April 1st



AVERAGE April-July RUNOFF ac-ft

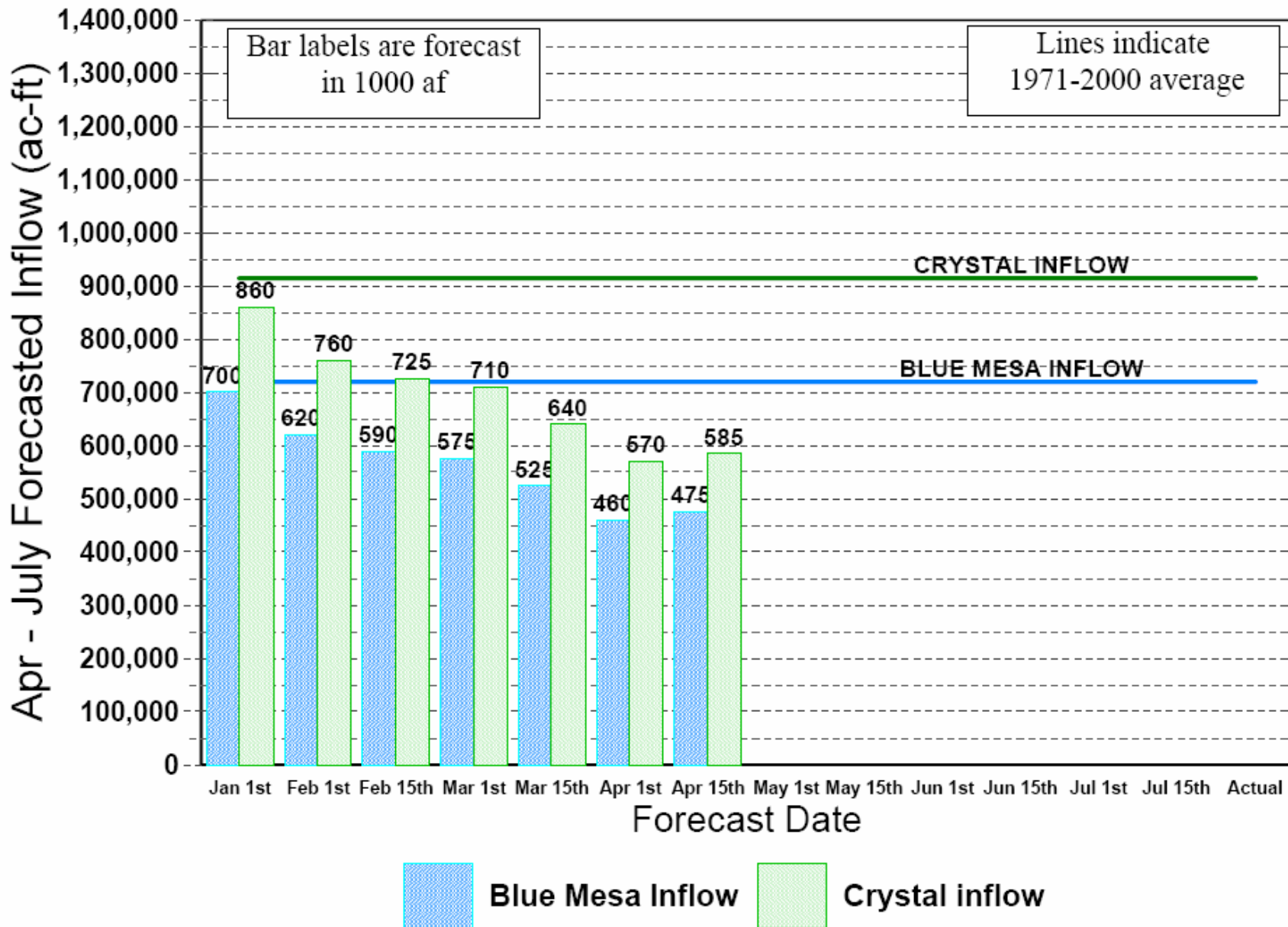


April 1 FORECASTED 2007 April-July RUNOFF ac-ft



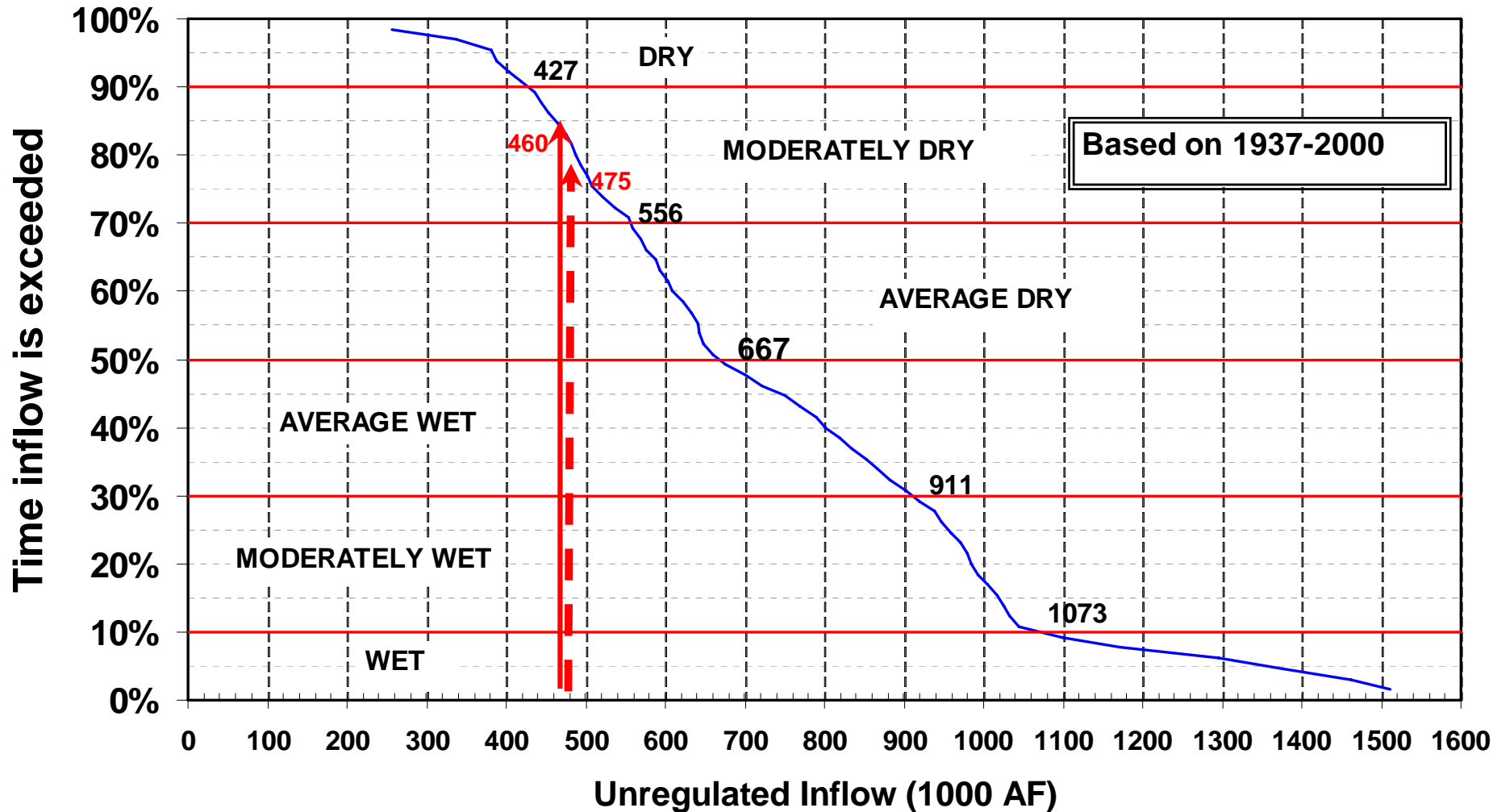
Aspinall Unit

Forecasted Unregulated Inflow



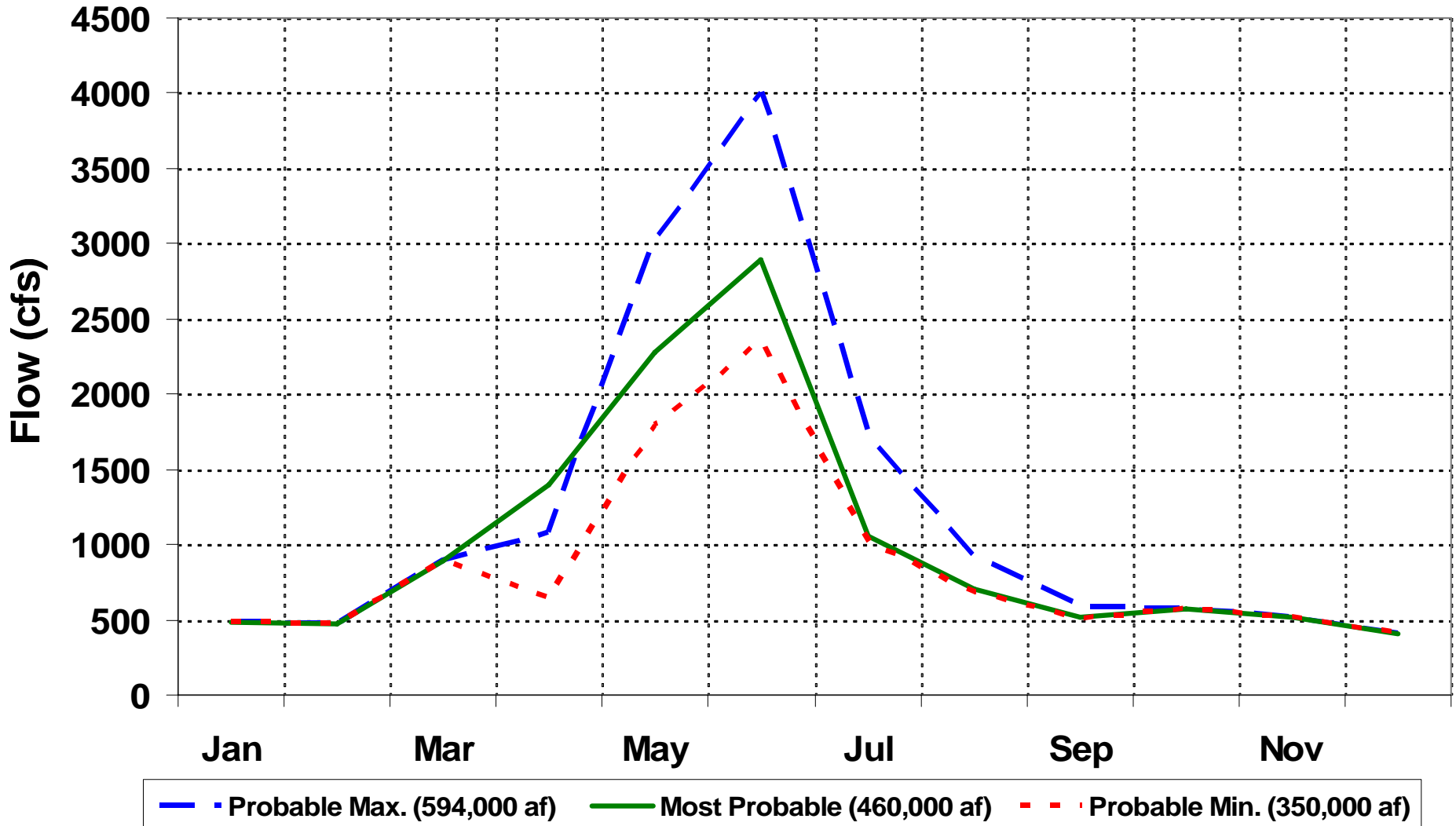
Blue Mesa Reservoir

April - July Unregulated Inflow



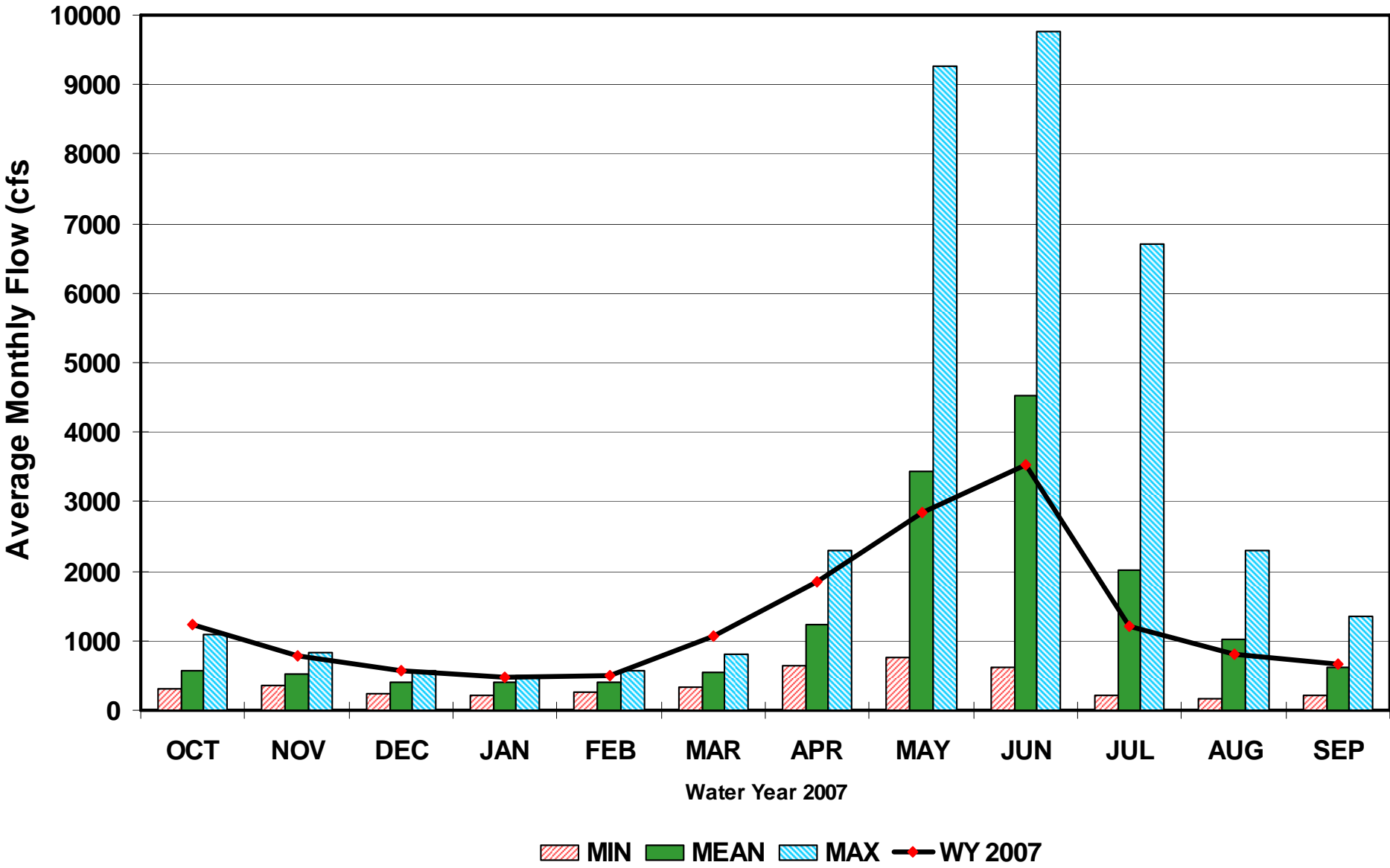
Unregulated Blue Mesa Inflow

Monthly Average



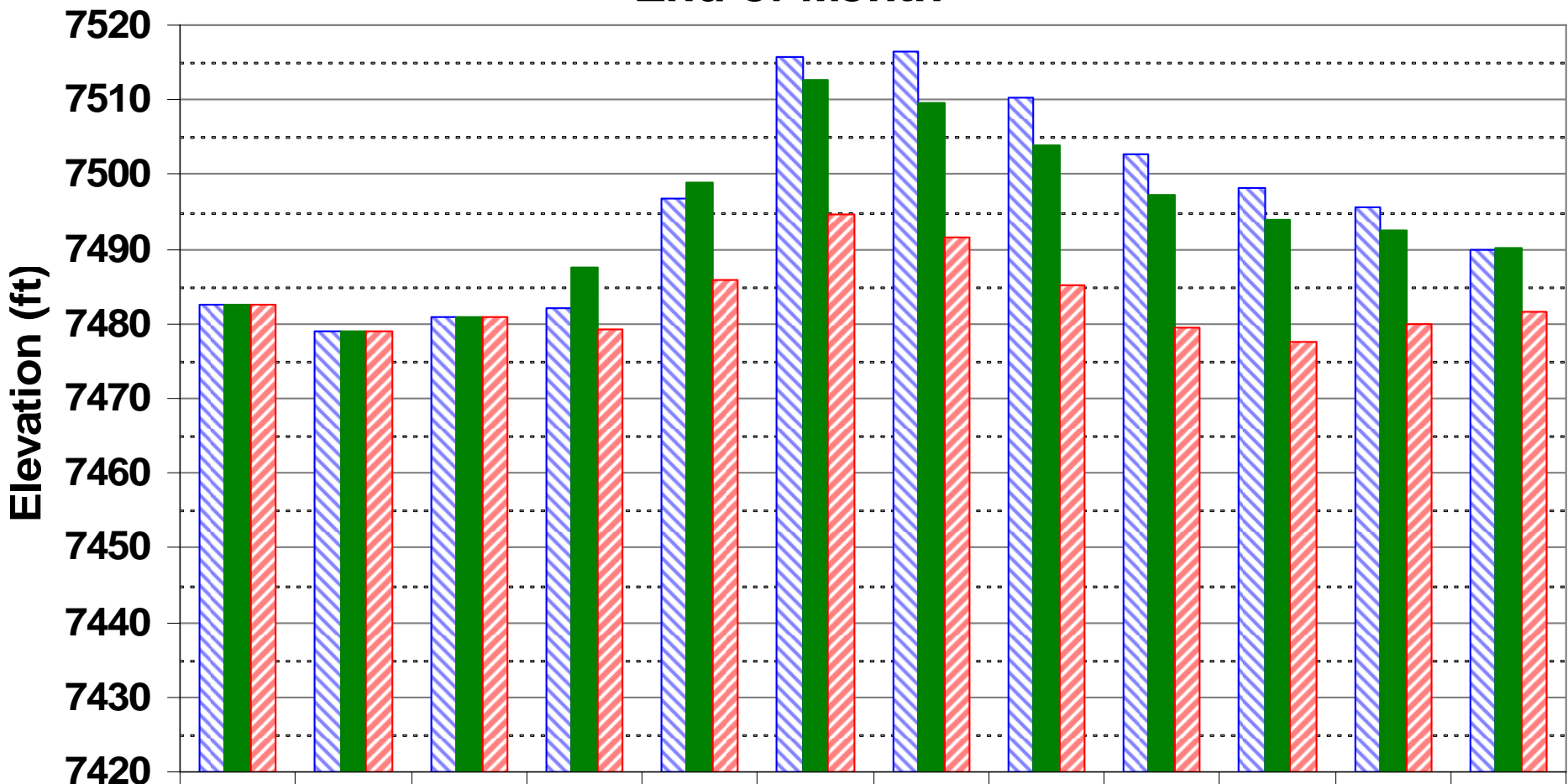
Blue Mesa Unregulated Inflow

1975-2006



Blue Mesa Elevation

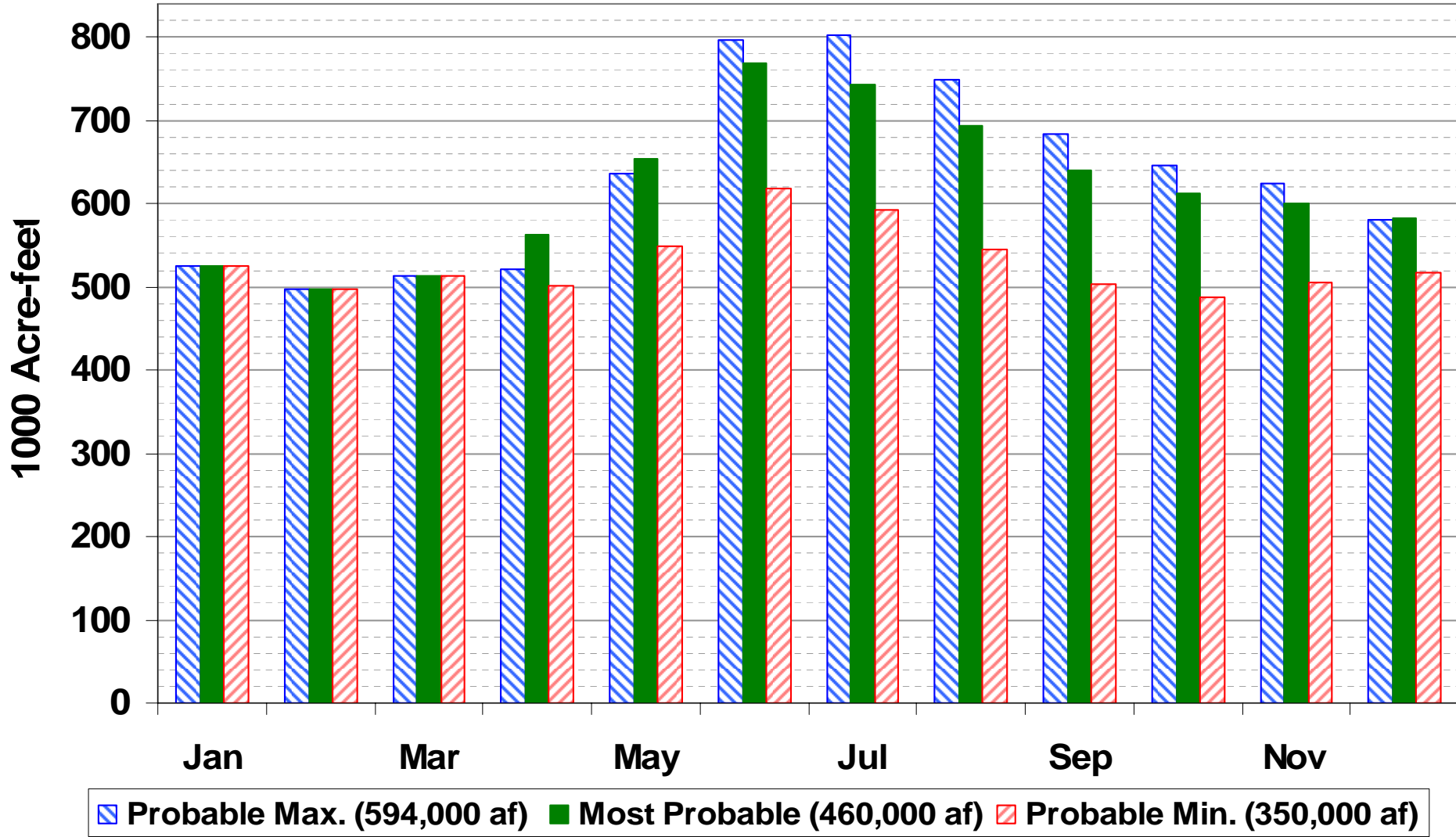
End of Month



■ Probable Max. (594,000 af) ■ Most Probable (460,000 af) ■ Probable Min. (350,000 af)

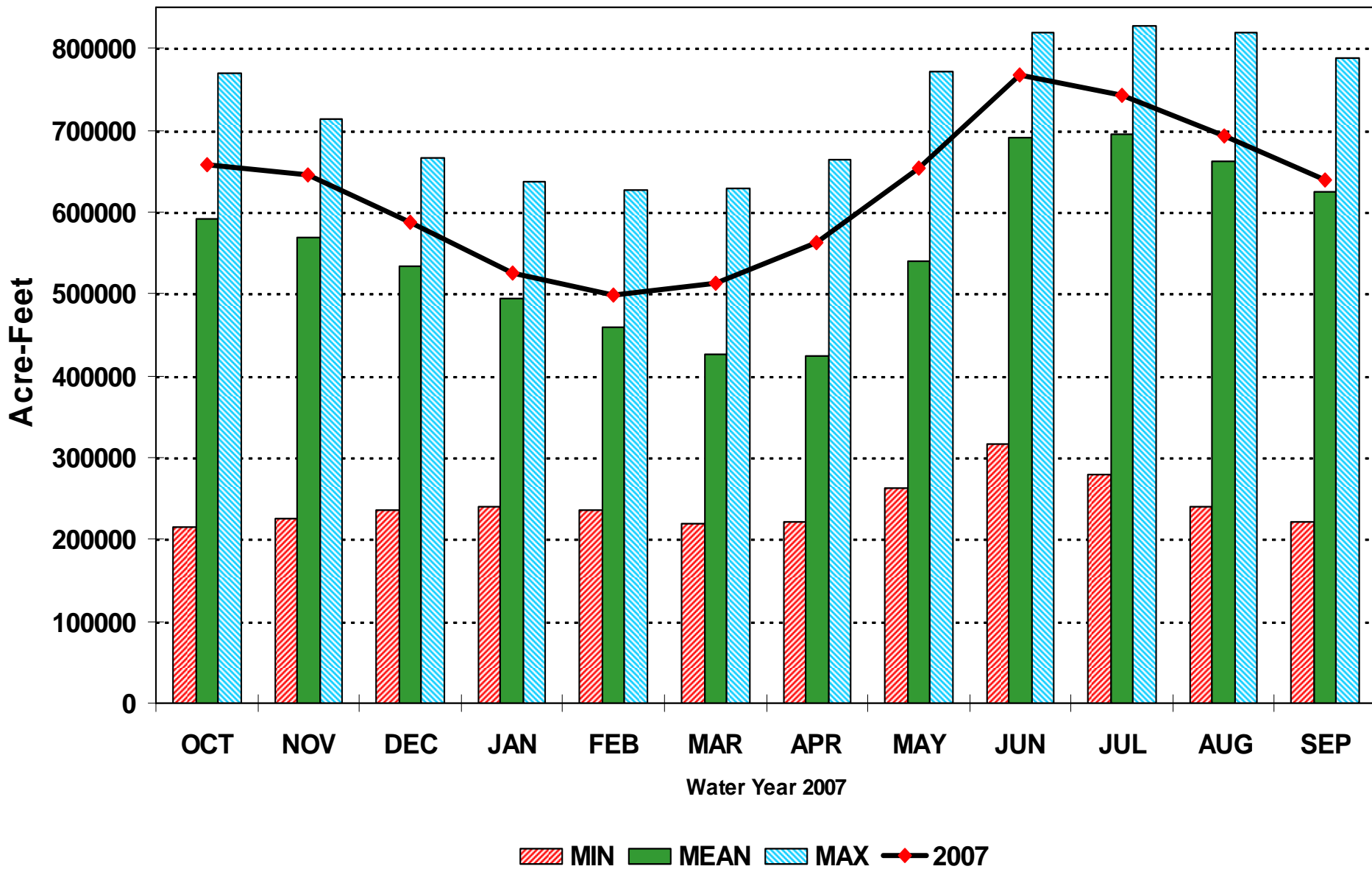
Blue Mesa Content

End of Month

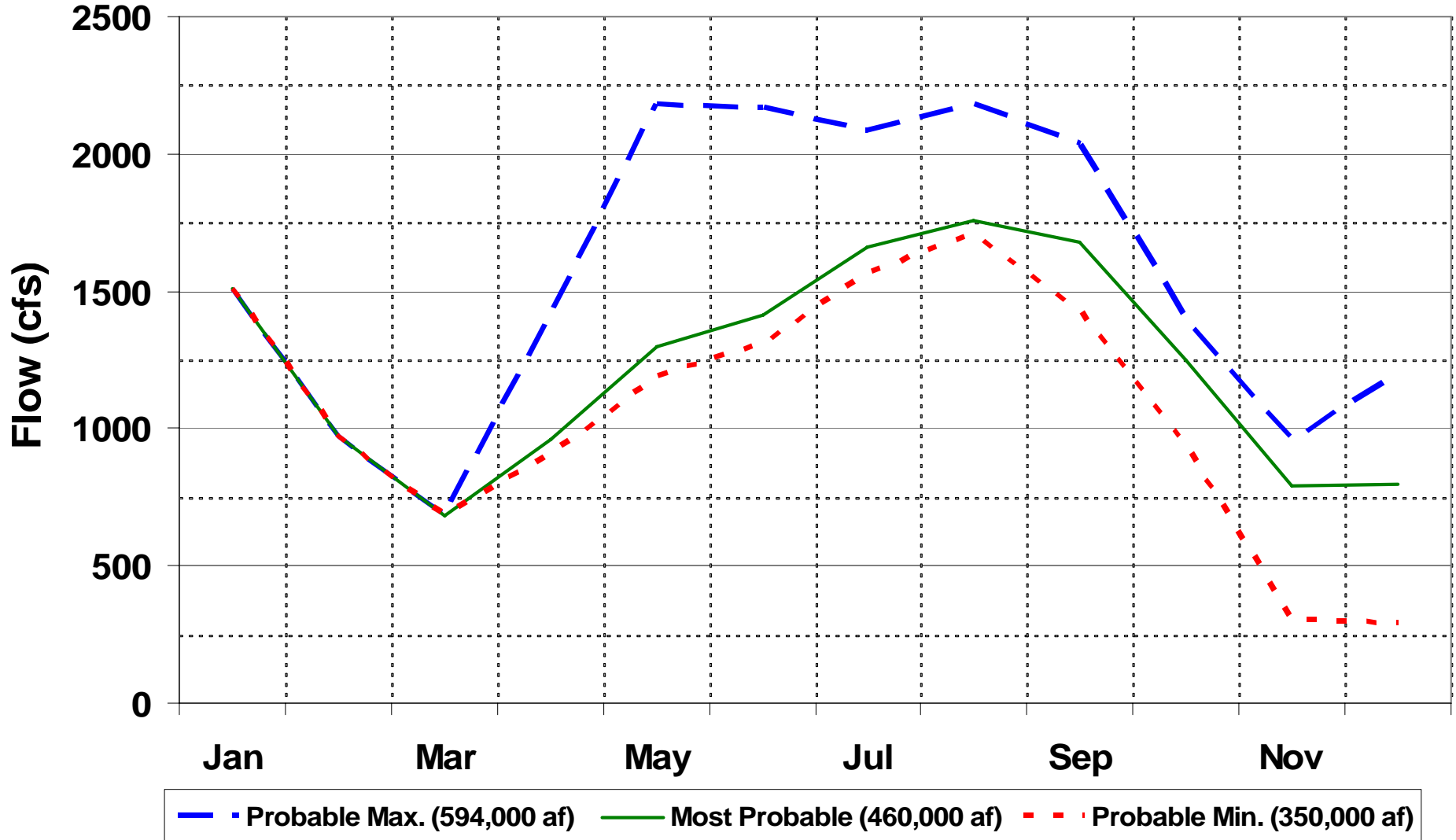


Blue Mesa End of Month Content

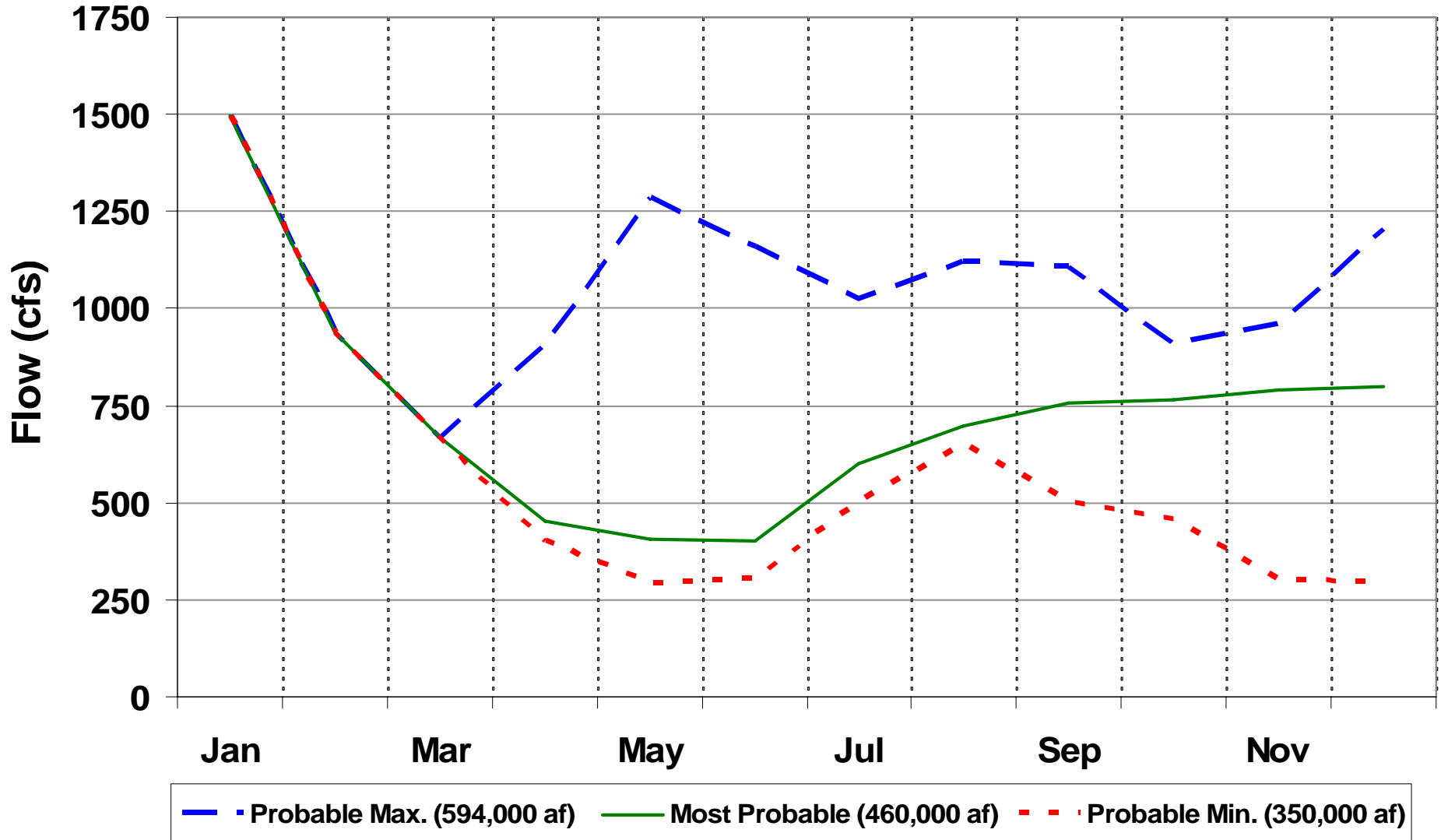
1975-2006



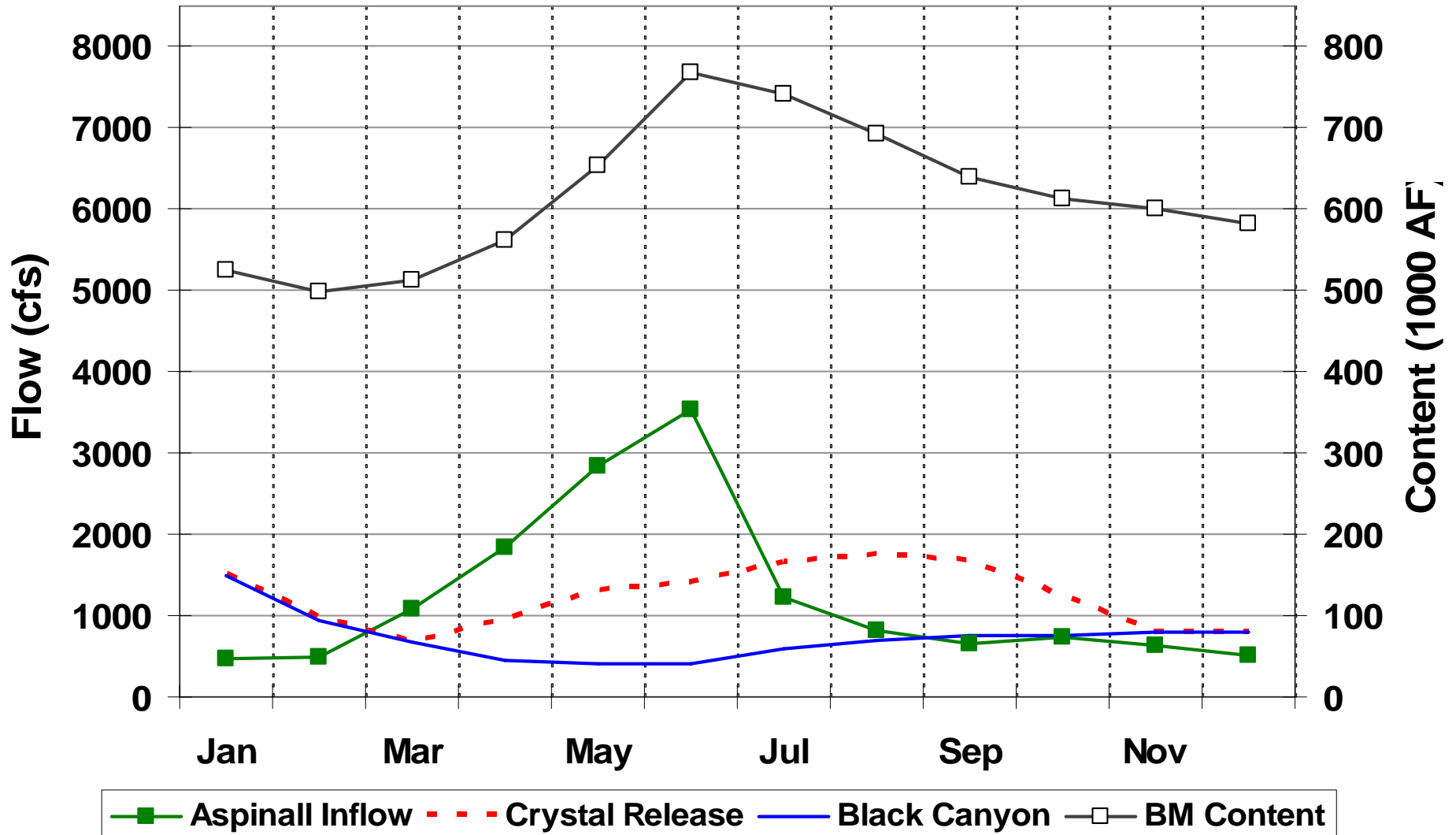
Crystal Release Monthly Average



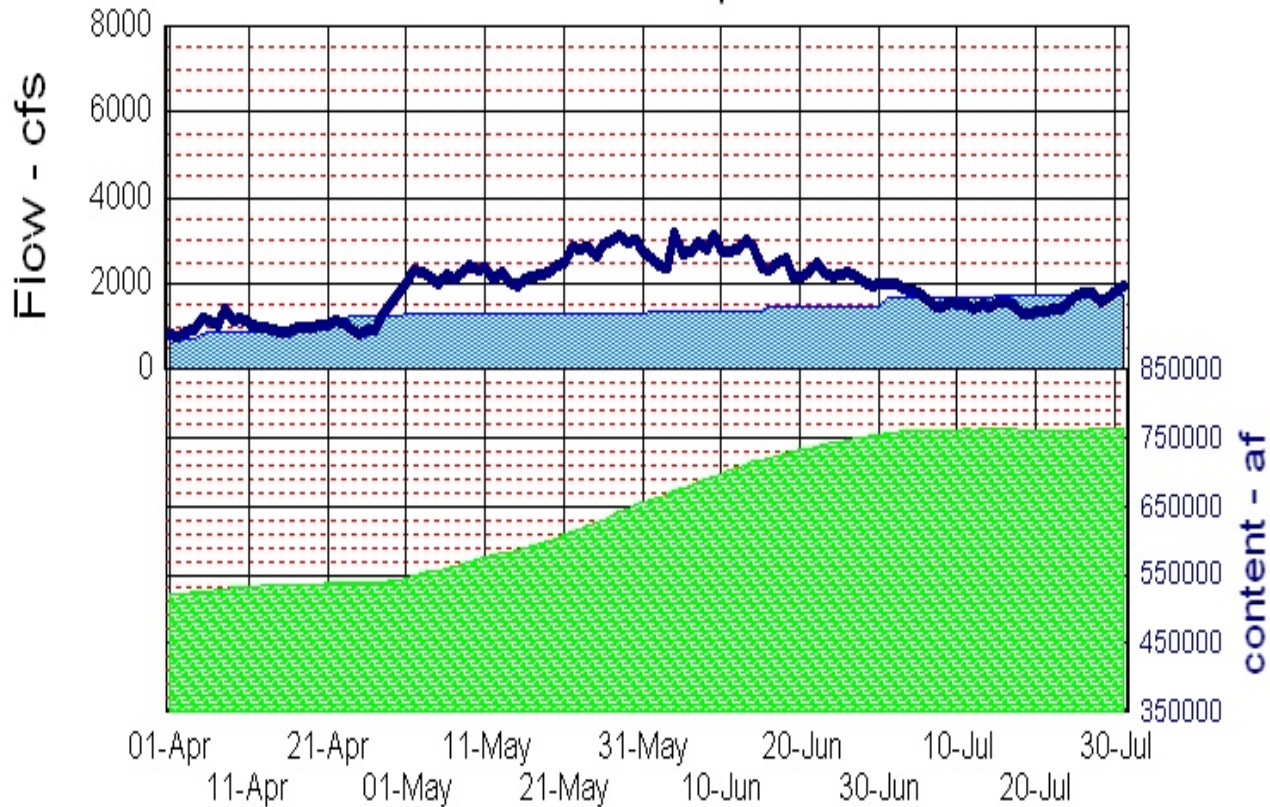
Black Canyon Monthly Average



Most Probable Monthly Average



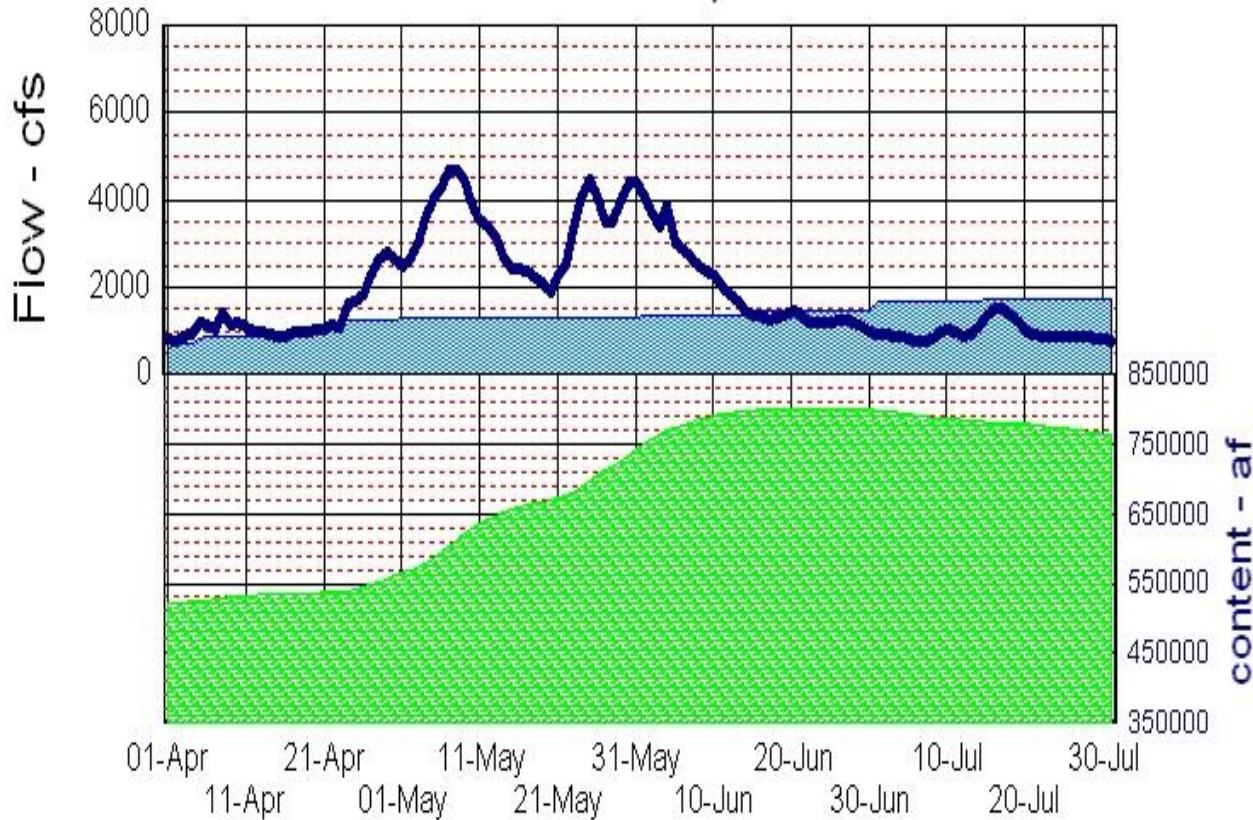
Proposed Operation w/o peak 1992 runoff pattern



- Crystal spill
- Other bypass
- BM content
- Planned bypass
- Crystal PP
- BM inflow

- 475,600** BM Unreg inflow
- 763,300** Max. BM content
- 7512.02** Max. BM elev.
- 759,900** July EOM content
- 7512.02** July EOM elev.
- 0** Spring Peak Vol.
- 0** Other bypass
- 0** Crystal spill

Proposed Operation w/o peak 2000 runoff pattern

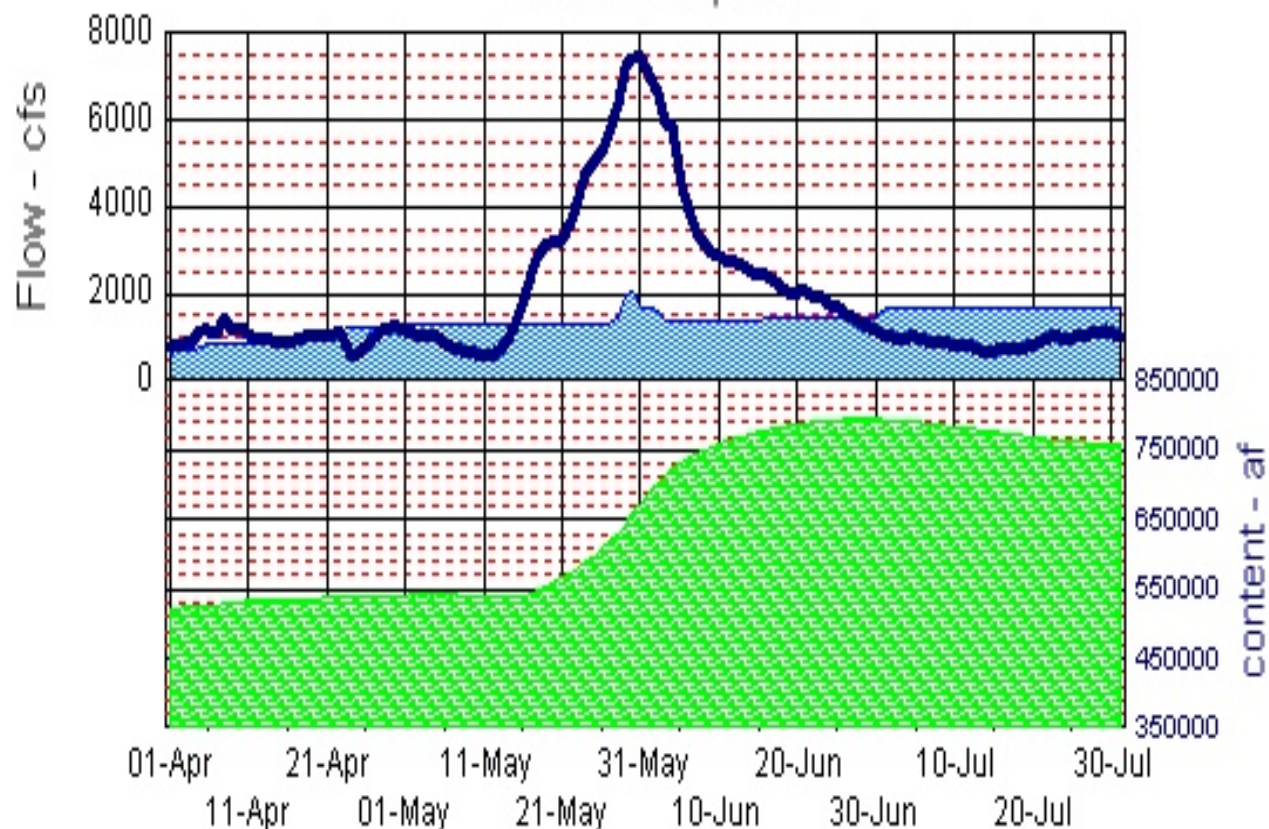


■ Crystal spill ■ Other bypass ■ BM content
■ Planned bypass ■ Crystal PP — BM inflow

- 474,700 BM Unreg inflow
- 800,200 Max. BM content
- 7516.18 Max. BM elev.
- 759,300 July EOM content
- 7511.95 July EOM elev.
- 0 Spring Peak Vol.
- 0 Other bypass
- 0 Crystal spill

Proposed Operation w/o peak

2003 runoff pattern



474,100 BM Unreg inflow

794,500 Max. BM content

7515.54 Max. BM elev.

757,000 July EOM content

7511.30 July EOM elev.

0 Spring Peak Vol.

0 Other bypass

0 Crystal spill