

## Upper Colorado Region Weekly Hydrology Summary

This hydrologic information is provided weekly to summarize the hydrologic conditions in the Upper Colorado Region. If additional information is required, please contact Heather Patno (hpatno@usbr.gov) in the Water Management Group, Power Office.

### Selected Reservoir Status - Current June 06, 2019

Reservoir*	Elevation (ft)	Live Storage (1000 AF)	% of Live Capacity	Avg Daily Unreg Inflow (cfs)	Daily Release* (cfs)
<a href="#">Lake Powell</a>	3,587.59	10,604	44%	49,174	<a href="#">13,949</a>
<a href="#">Blue Mesa</a>	7,469.81	435	52%	6,274	<a href="#">8,272</a>
<a href="#">Flaming Gorge</a>	6,030.21	3,357	89%	5,369	<a href="#">7,942</a>
<a href="#">Fontenelle</a>	6,489.38	223	64%	5,403	<a href="#">2,051</a>
<a href="#">Navajo</a>	6,056.89	1,309	77%	8,388	<a href="#">4,341</a>
Elephant Butte	4,340.13	493	25%	2,775	<a href="#">2,250</a>

Current as of: 6/6/2019

\*Hyperlinks are to current status/data

### Selected Reservoir Inflows - Forecasted & Water Year to June 06, 2019

Reservoir	WY2019 JUN APR-JUL Unregulated Inflow Volume (kaf) (1000 AF)	WY2019 JUN APR-JUL Unregulated Inflow Volume (kaf) (% Avg)	May Observed Inflow (1000 AF)	May % of Avg Observed Inflow (1000 AF)	WY to Date % of Avg Inflow*
Lake Powell	10,303	143%	2,511	107%	92%
Blue Mesa	1,040	153%	214	97%	100%
Fontenelle	780	107%	167	102%	99%
Flaming Gorge	1,170	120%	252	103%	105%
Navajo	999	136%	270	97%	104%

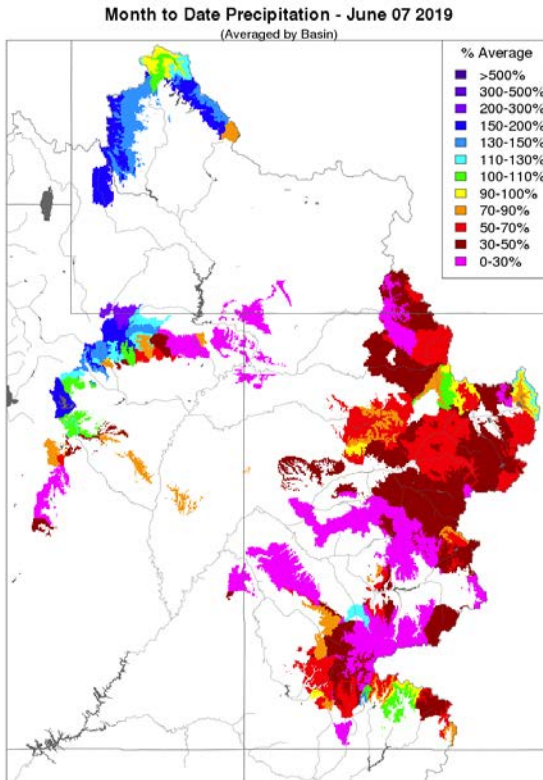
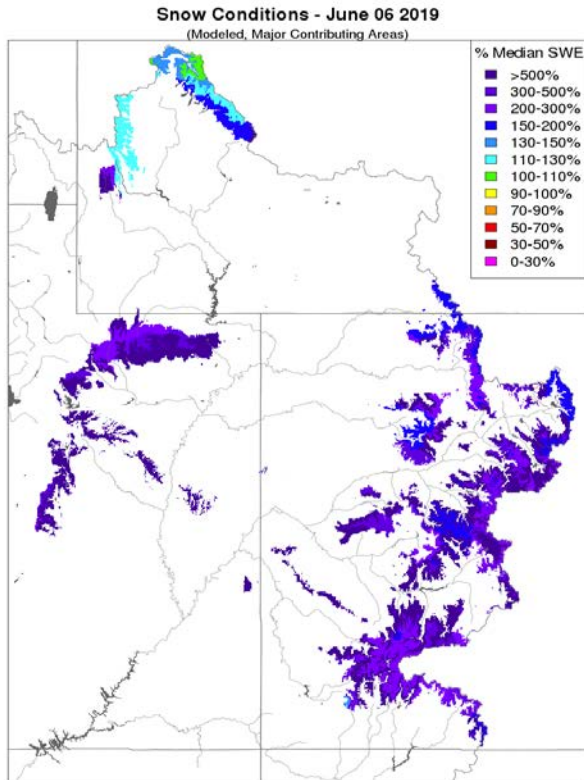
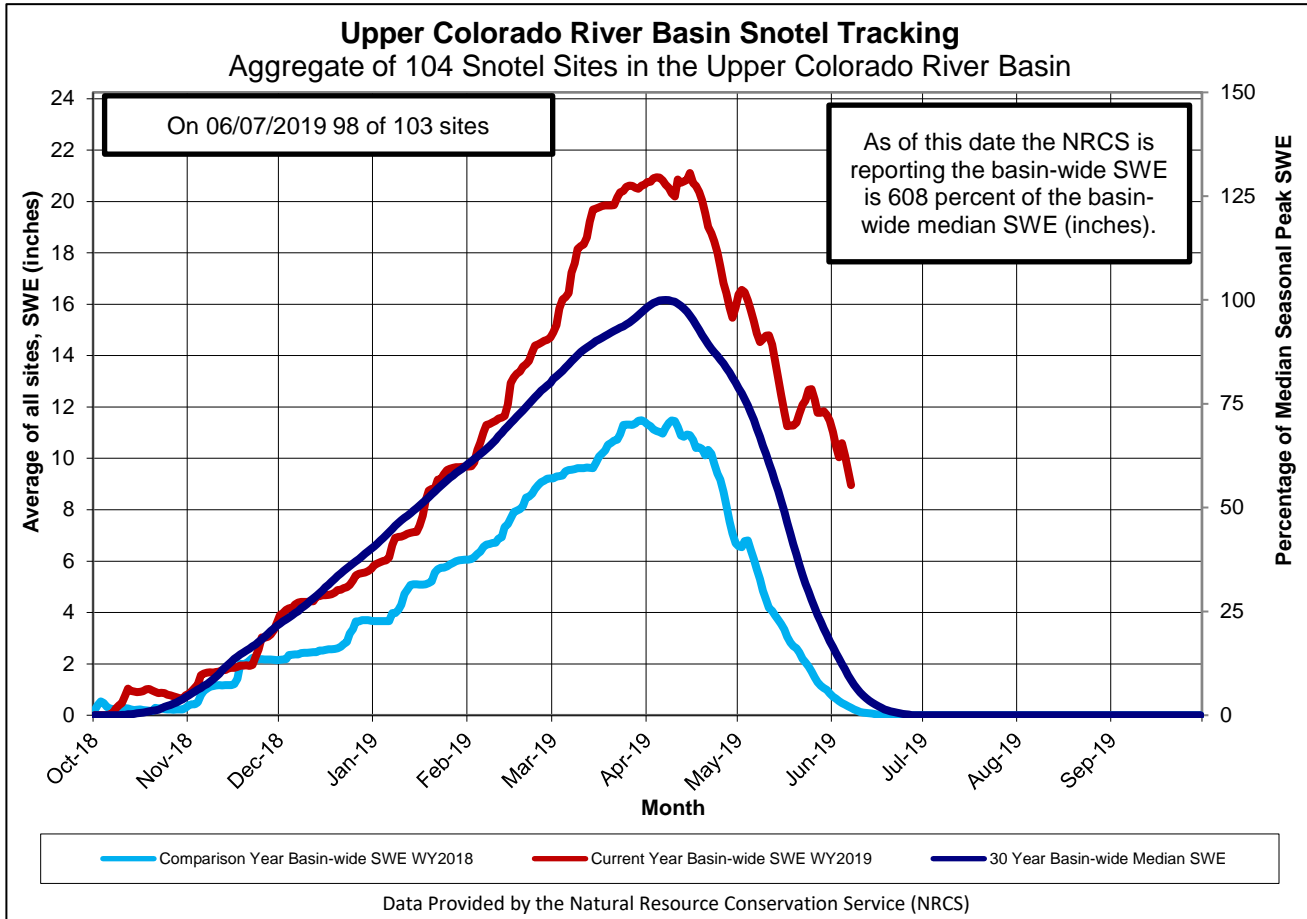
\*Compares cumulative water year inflow to date with historic average cumulative inflow for the same date

### [Basin Snow Water Equivalent and Precipitation](#)

Basin	Total SWE % of Median	Total Precip % of Avg.
<b>Upper Colorado (Above Lake Powell)</b>	<b>607%</b>	<b>126%</b>
<b>Upper Green River Basin</b>	<b>289%</b>	<b>110%</b>
<b>Yampa/White River Basins</b>	<b>267%</b>	<b>113%</b>
<b>Gunnison River Basin</b>	<b>341%</b>	<b>133%</b>
<b>San Juan River Headwaters</b>	<b>938%</b>	<b>128%</b>
<b>Great Basin</b>	<b>688%</b>	<b>126%</b>
<b>Rio Grande</b>	<b>0%</b>	<b>127%</b>
<b>Pecos</b>	<b>0%</b>	<b>121%</b>

\*\*Hyperlink to Upper Colorado Region Snow Conditions Map

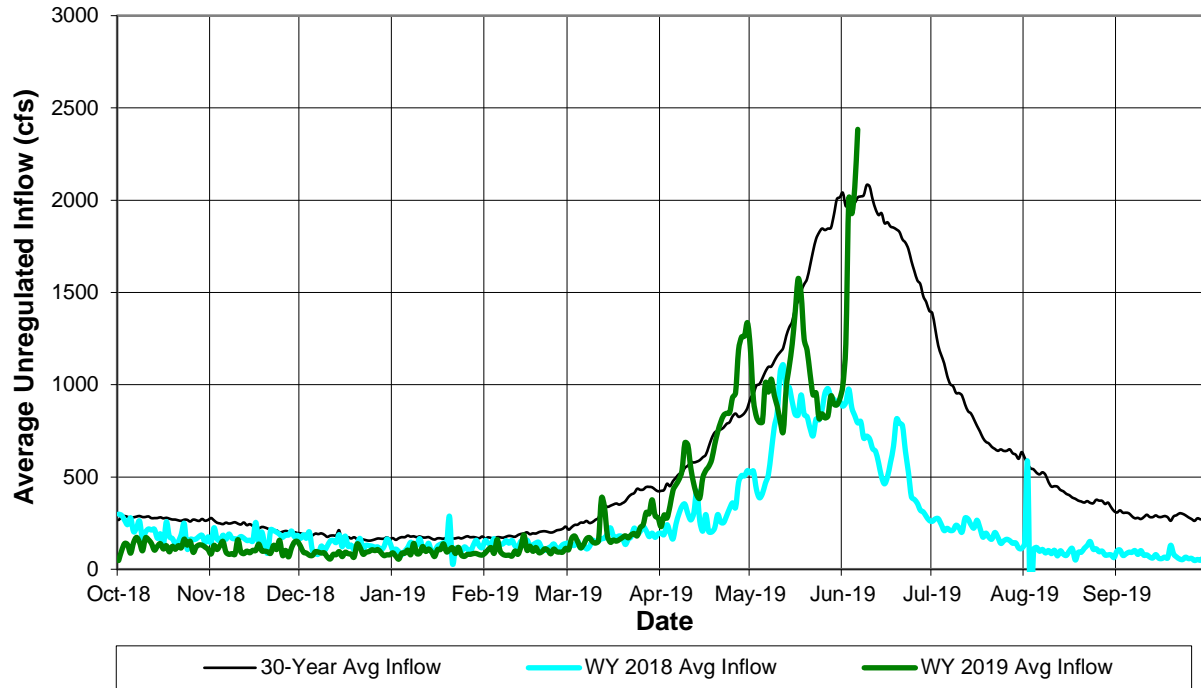
# Upper Colorado Region Weekly Hydrology Summary



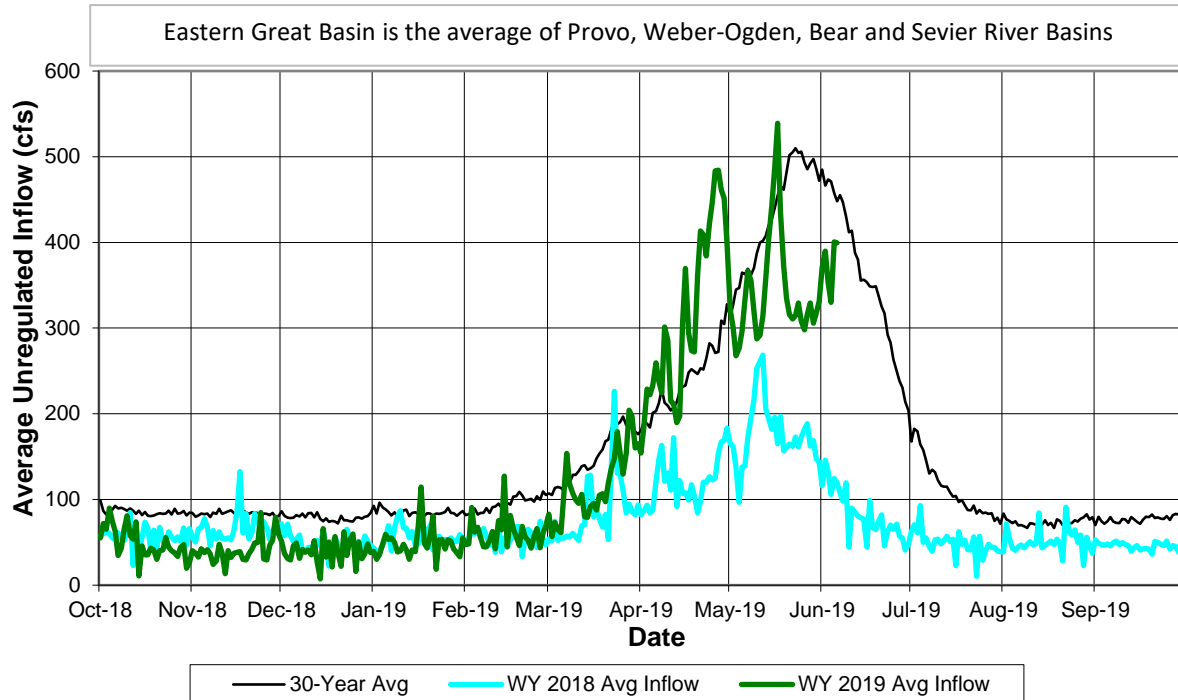
Graphs from the CBRFC represent contributing areas of soil moisture, snowpack and precipitation. Purple and red colors represent drier conditions, and greens and dark blues represent average and wetter conditions.

# Upper Colorado Region Weekly Hydrology Summary

## Upper Colorado Basin Daily Average Unregulated Inflow for all Reservoirs Water Year 2019

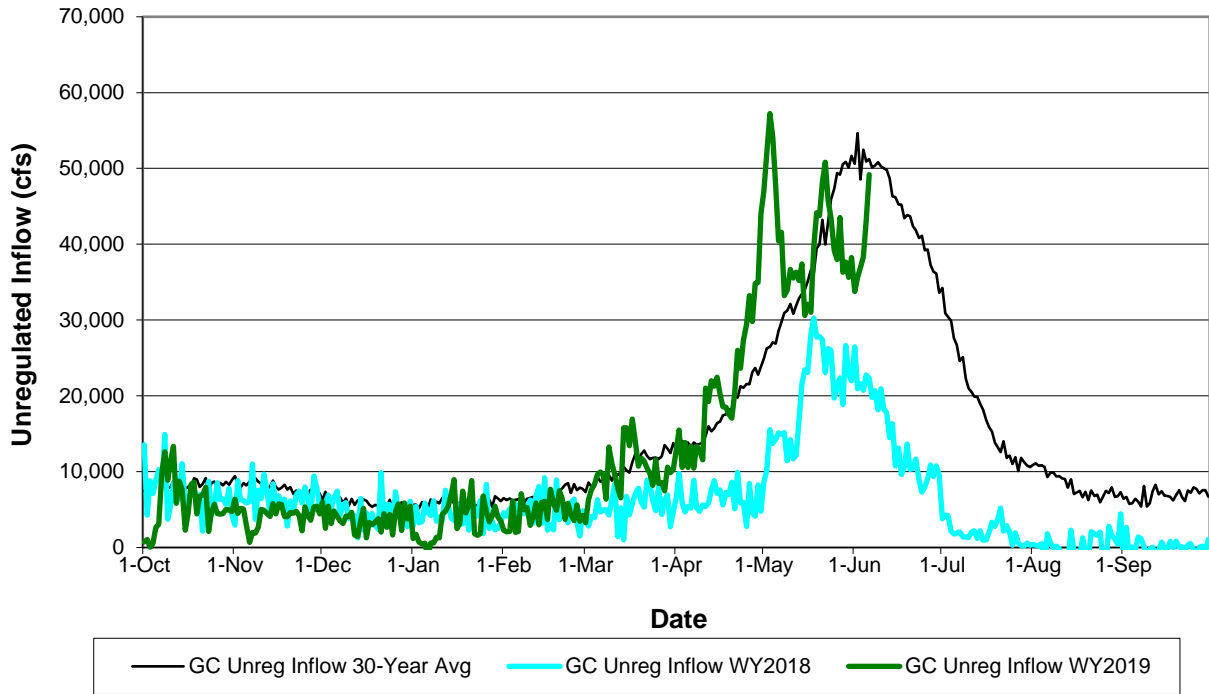


## Eastern Great Basin Daily Average Unregulated Inflow for all Reservoirs Water Year 2019

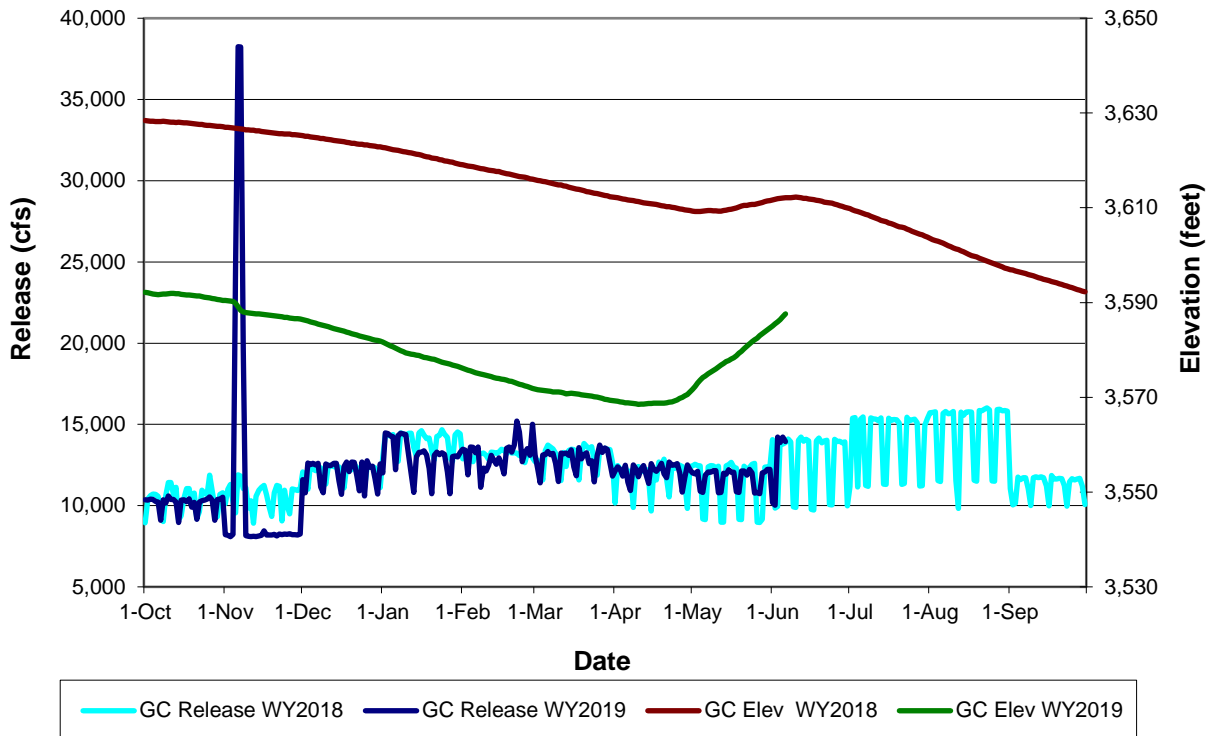


# Upper Colorado Region Weekly Hydrology Summary

**Lake Powell Reservoir and Glen Canyon Dam  
Daily Unregulated Inflow  
Water Year 2019**

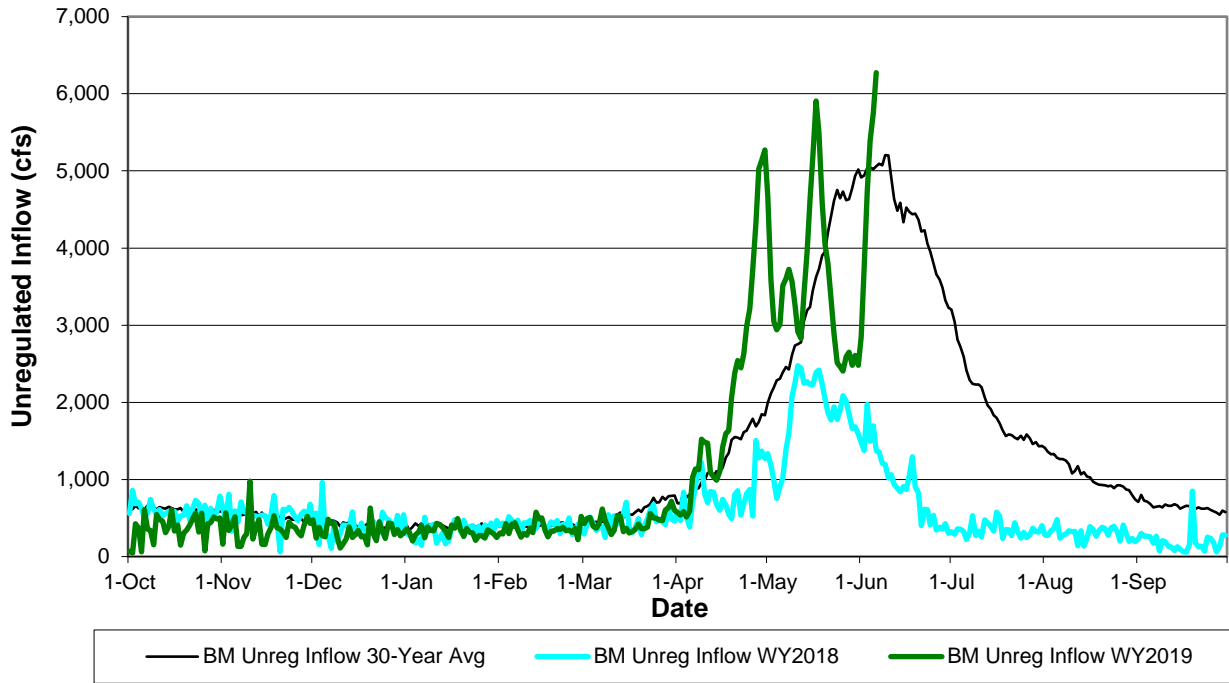


**Lake Powell Reservoir and Glen Canyon Dam  
Daily Total Release and Elevation  
Water Year 2019**

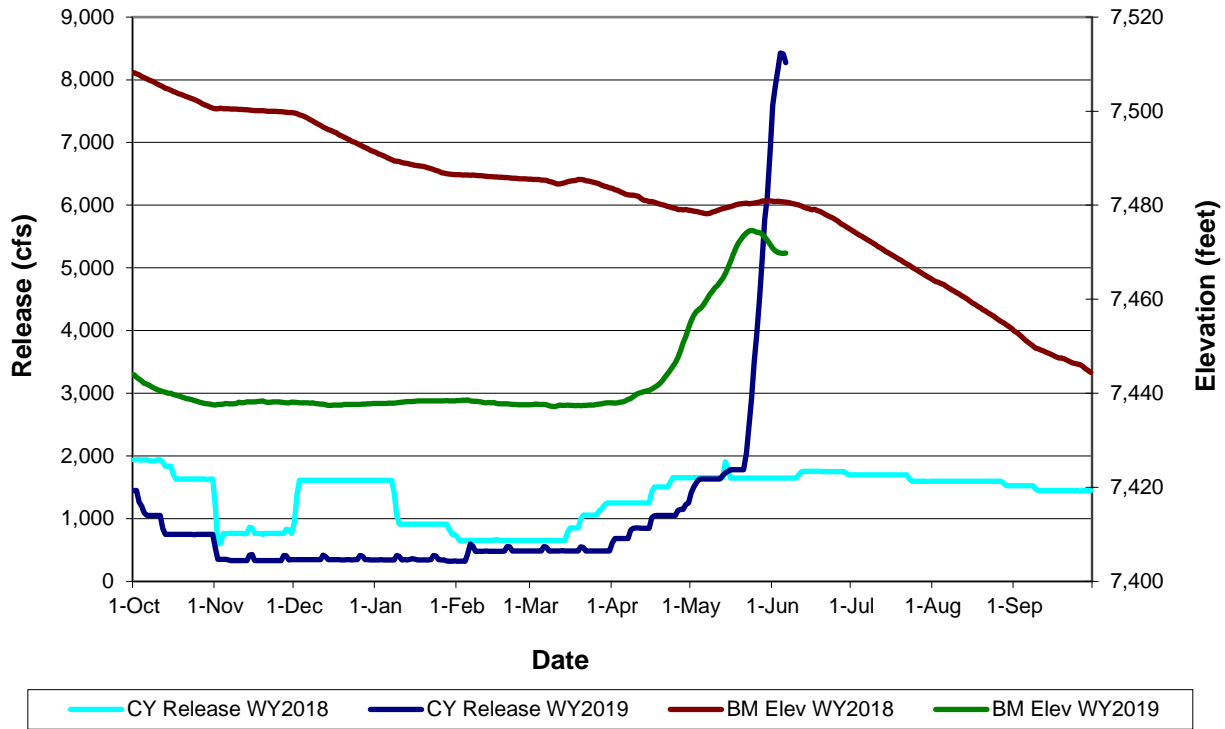


# Upper Colorado Region Weekly Hydrology Summary

## Blue Mesa Dam and Reservoir Unregulated Inflow Daily Average Water Year 2019

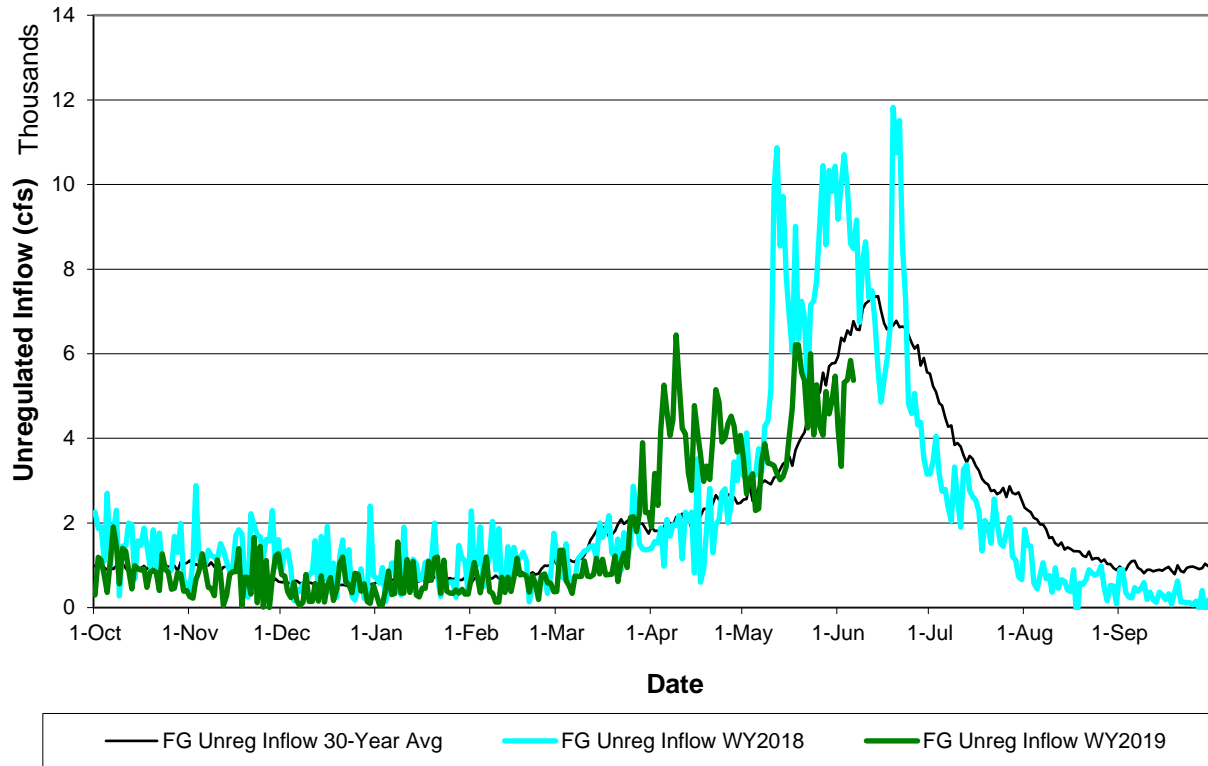


## Crystal Dam and Reservoir Daily Total Release and Blue Mesa Dam and Reservoir Elevation Water Year 2019

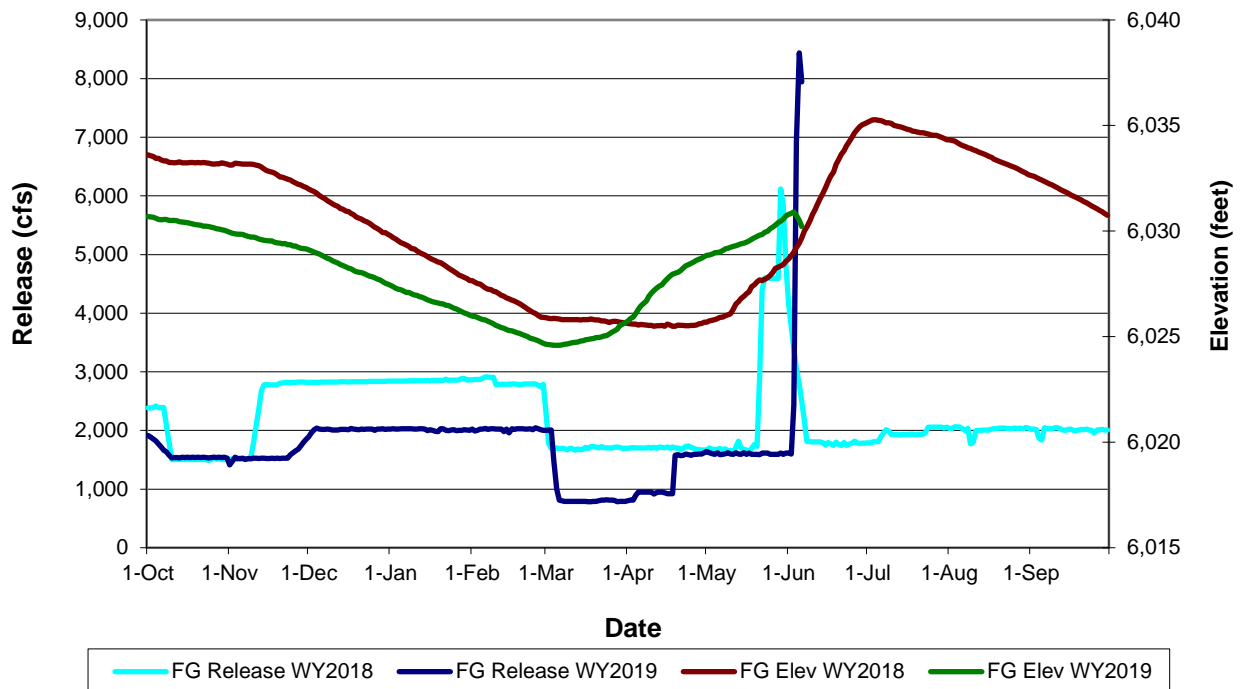


# Upper Colorado Region Weekly Hydrology Summary

### Flaming Gorge Dam and Reservoir Unregulated Inflow Daily Average Water Year 2019

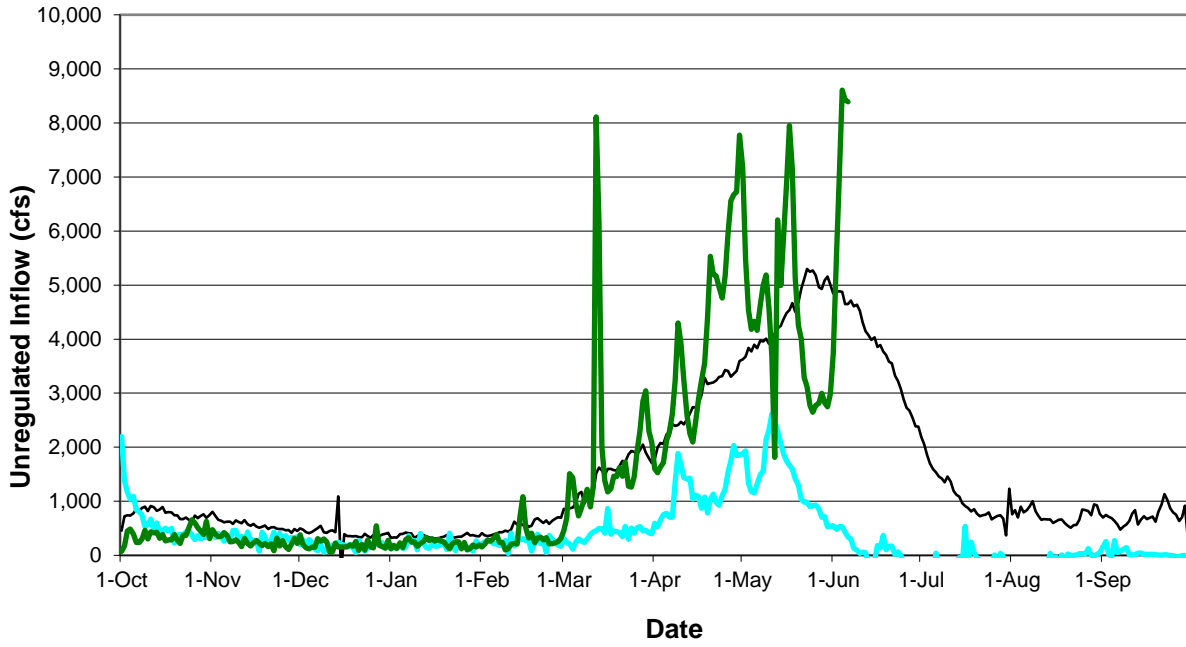


### Flaming Gorge Dam and Reservoir Daily Total Release and Elevation Water Year 2019



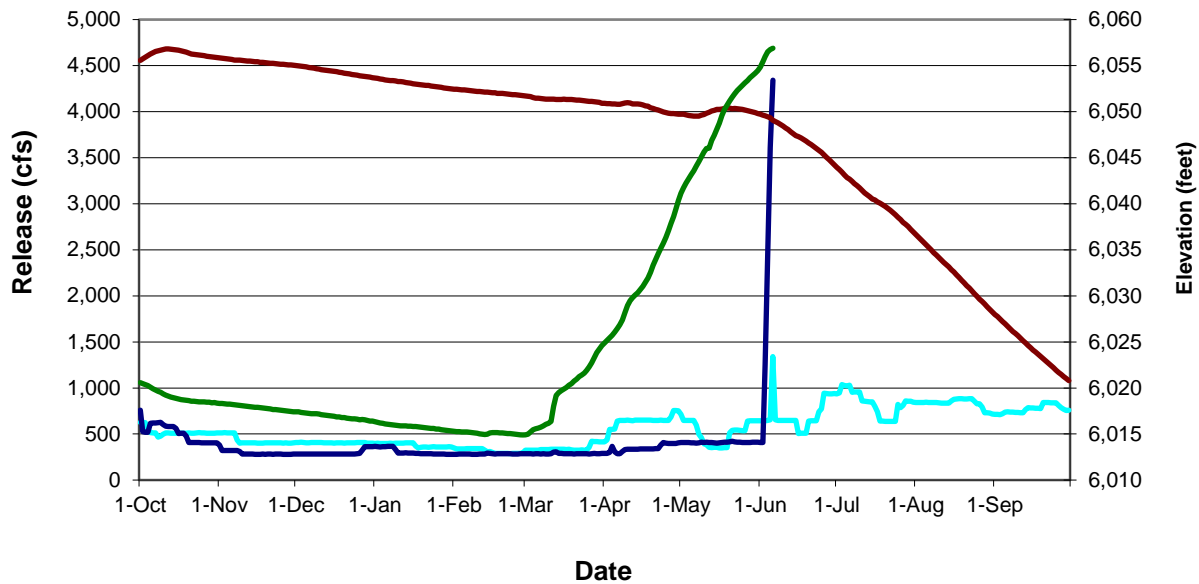
# Upper Colorado Region Weekly Hydrology Summary

### Navajo Dam and Reservoir Unregulated Inflow Daily Average Water Year 2019



— NV Mod Unreg Inflow 30-Year Avg
— NV Mod Unreg Inflow WY2018
— NV Mod Unreg Inflow WY2019

### Navajo Dam and Reservoir Daily Total Release and Elevation Water Year 2019



— NV Release WY2018
— NV Release WY2019
— NV Elev WY2018
— NV Elev WY2019