



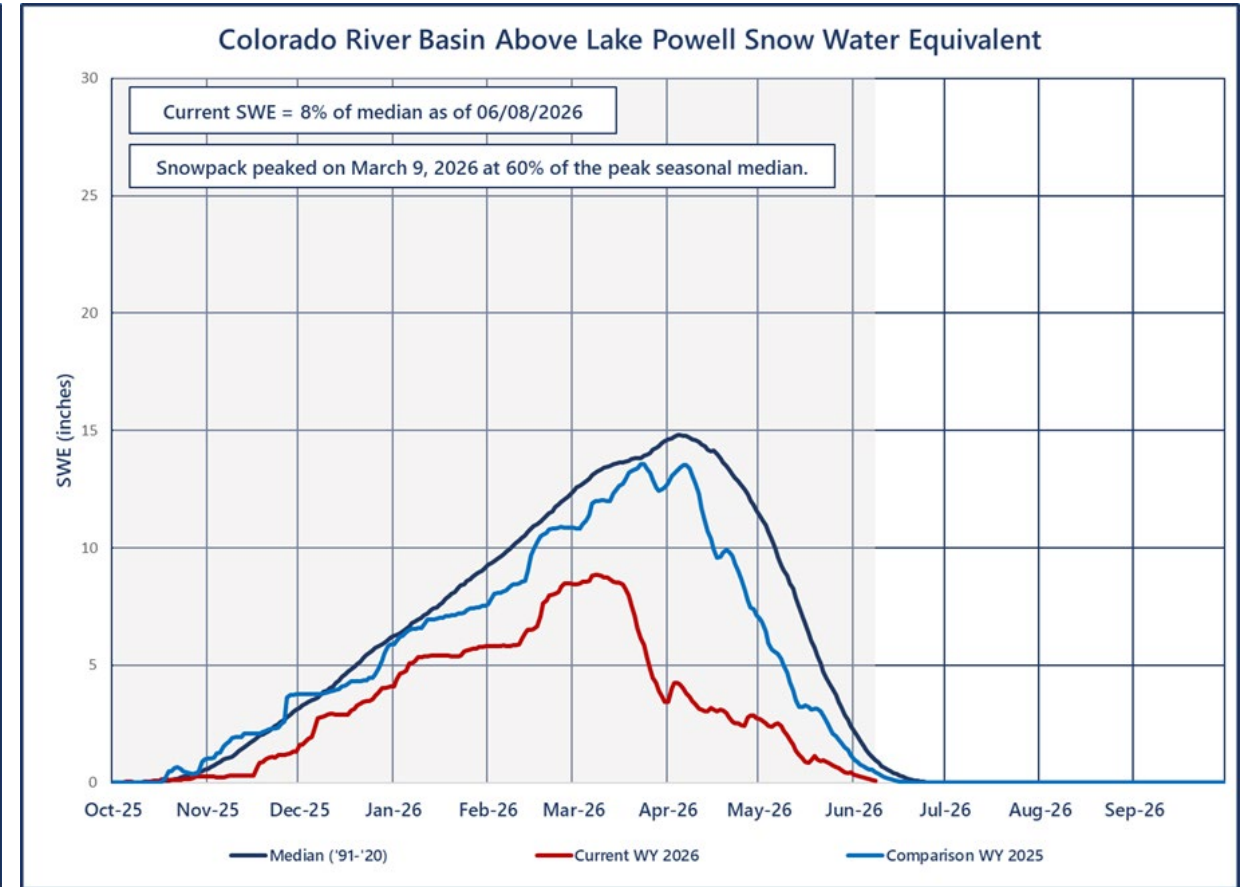
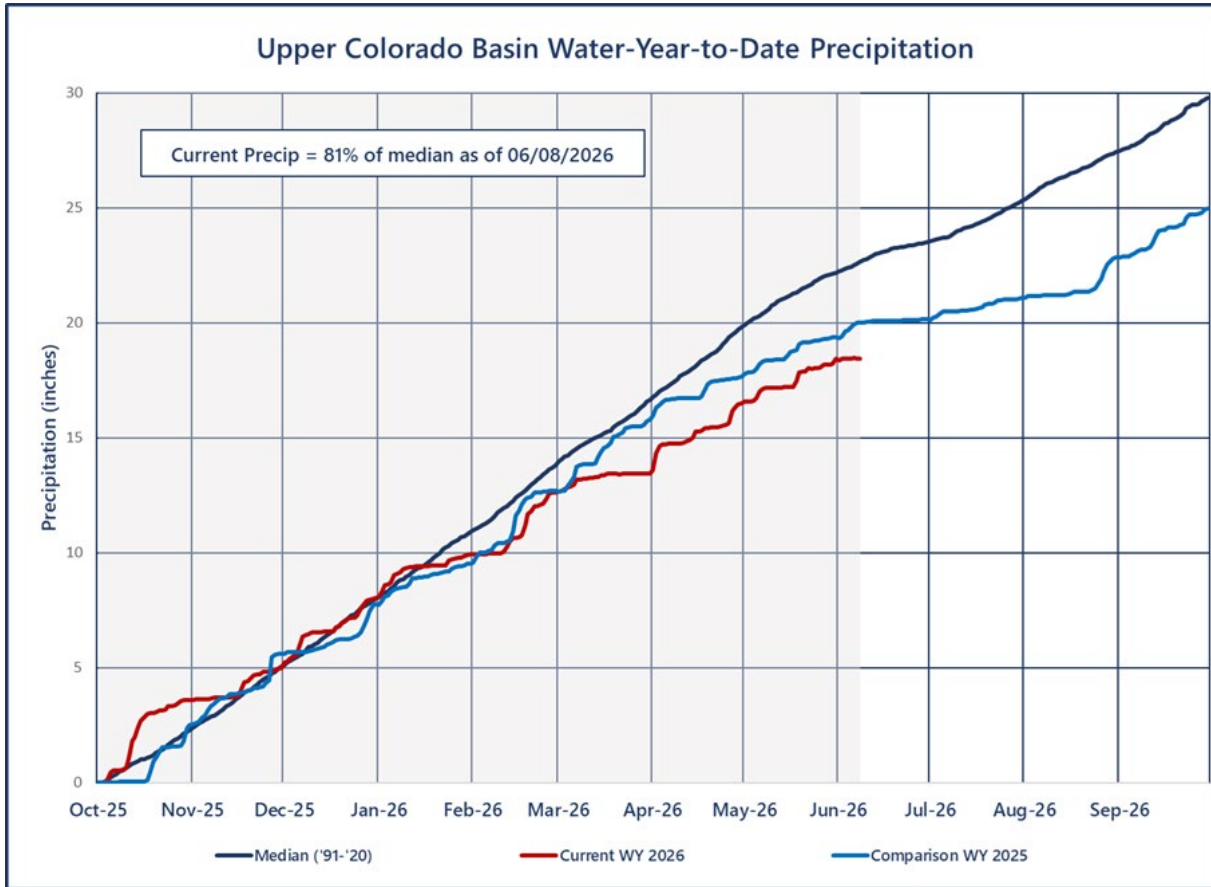
— BUREAU OF —
RECLAMATION

GCDAMP - TWG

Basin Hydrology and Operations

June 10, 2026

Upper Colorado Precipitation and SWE¹



¹Statistics are based on the 30-year period of record from 1991-2020.



Most Probable June Forecast Water Year 2026

April – July 2026
Forecasted Unregulated Inflow
as of June 3, 2026

Reservoir	Inflow (kaf)	Change from May	Percent of Avg ¹
Fontenelle	330	-25	45
Flaming Gorge	350	-30	36
Blue Mesa	150	-20	24
Navajo	158	-10	25
Powell	950	150	15

Water Year 2026
Unregulated Inflow Forecast
as of June 3, 2026

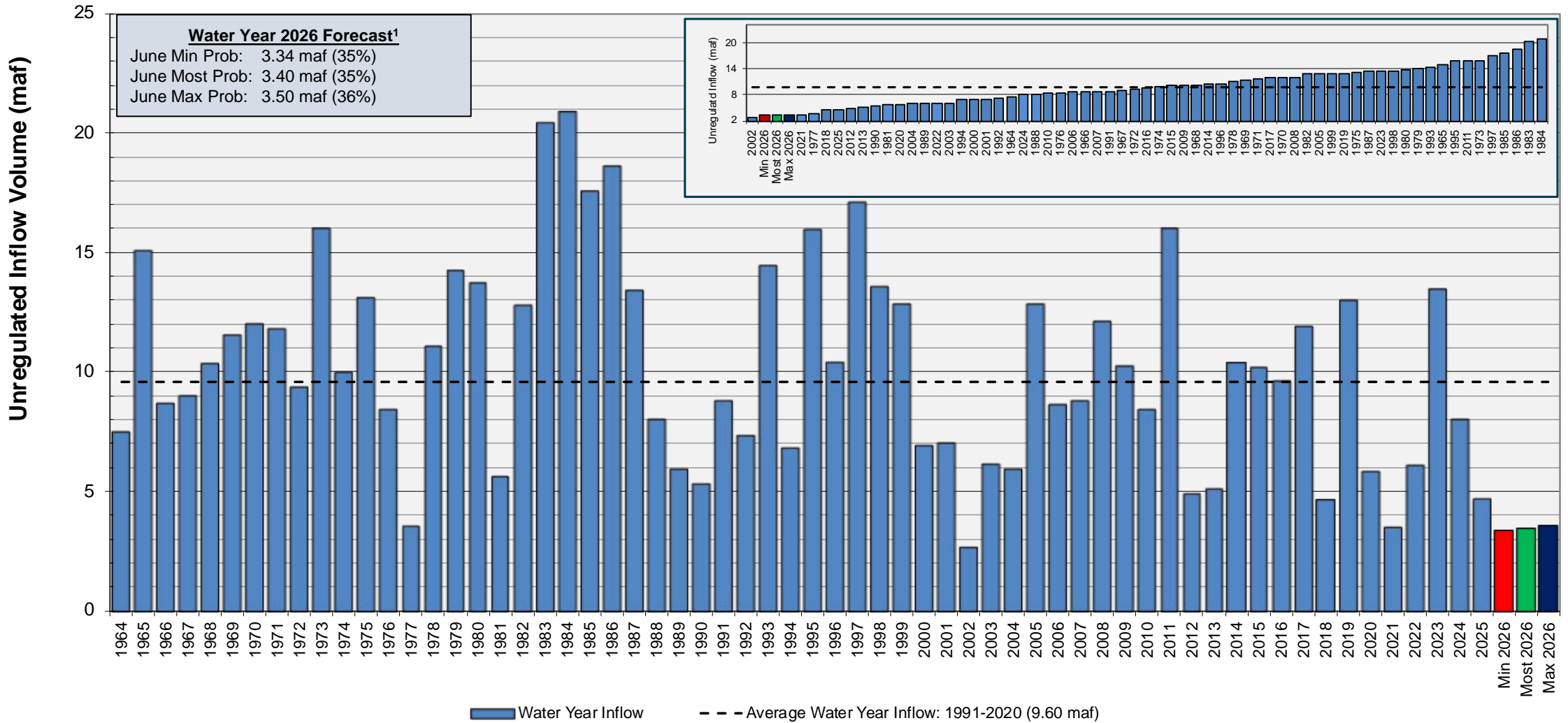
Reservoir	Inflow (kaf)	Change from May	Percent of Avg ¹
Fontenelle	613	-28	57
Flaming Gorge	658	-38	47
Blue Mesa	384	-23	42
Navajo	529	-51	58
Powell	3,401	130	35

¹Water year statistics are based on the 30-year period from 1991-2020



Lake Powell Water Year Unregulated Inflow

as of June 3, 2026
Comparison with History



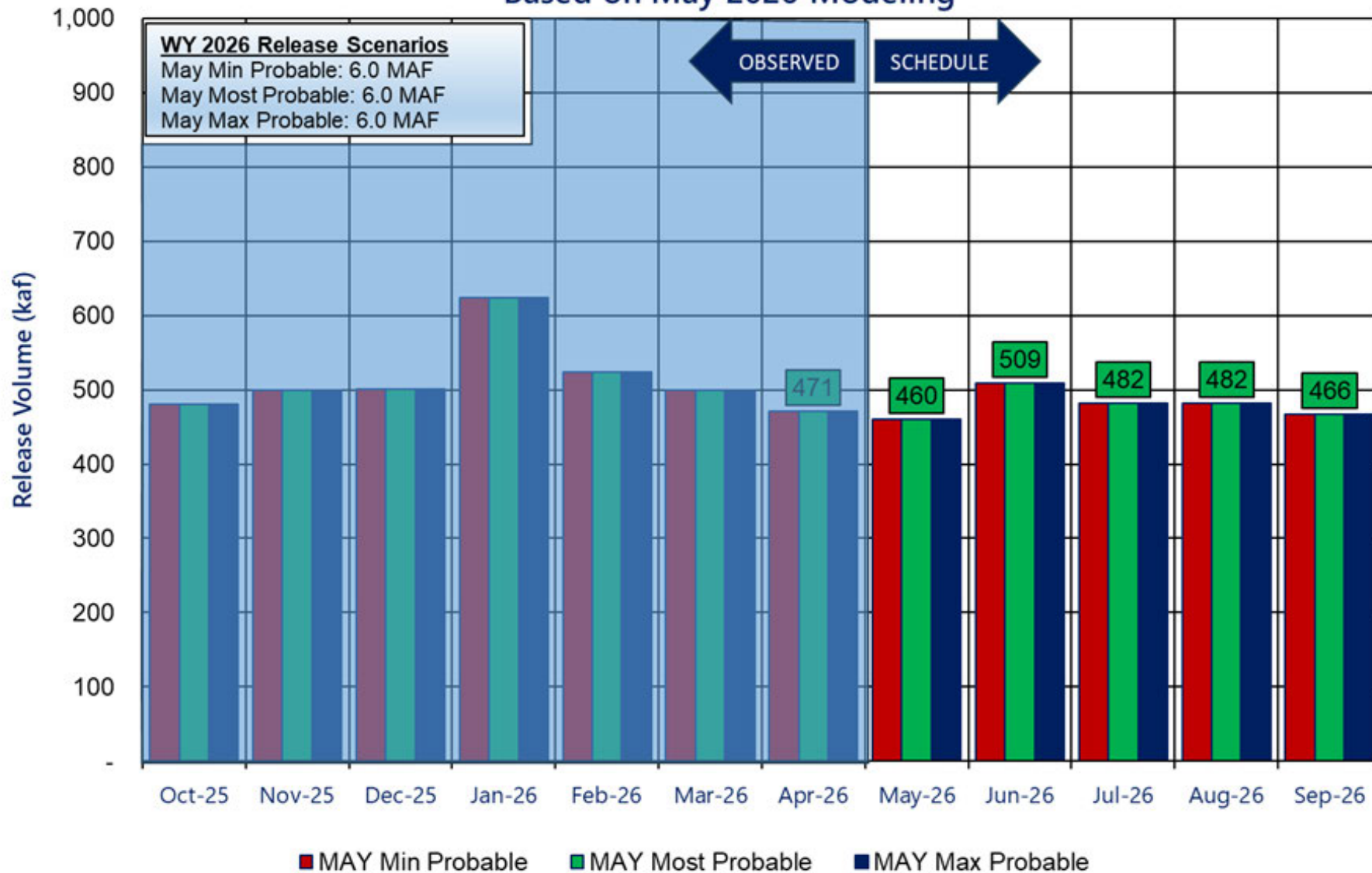
¹Water Year statistics are based on the 30-year period of record from 1991-2020.



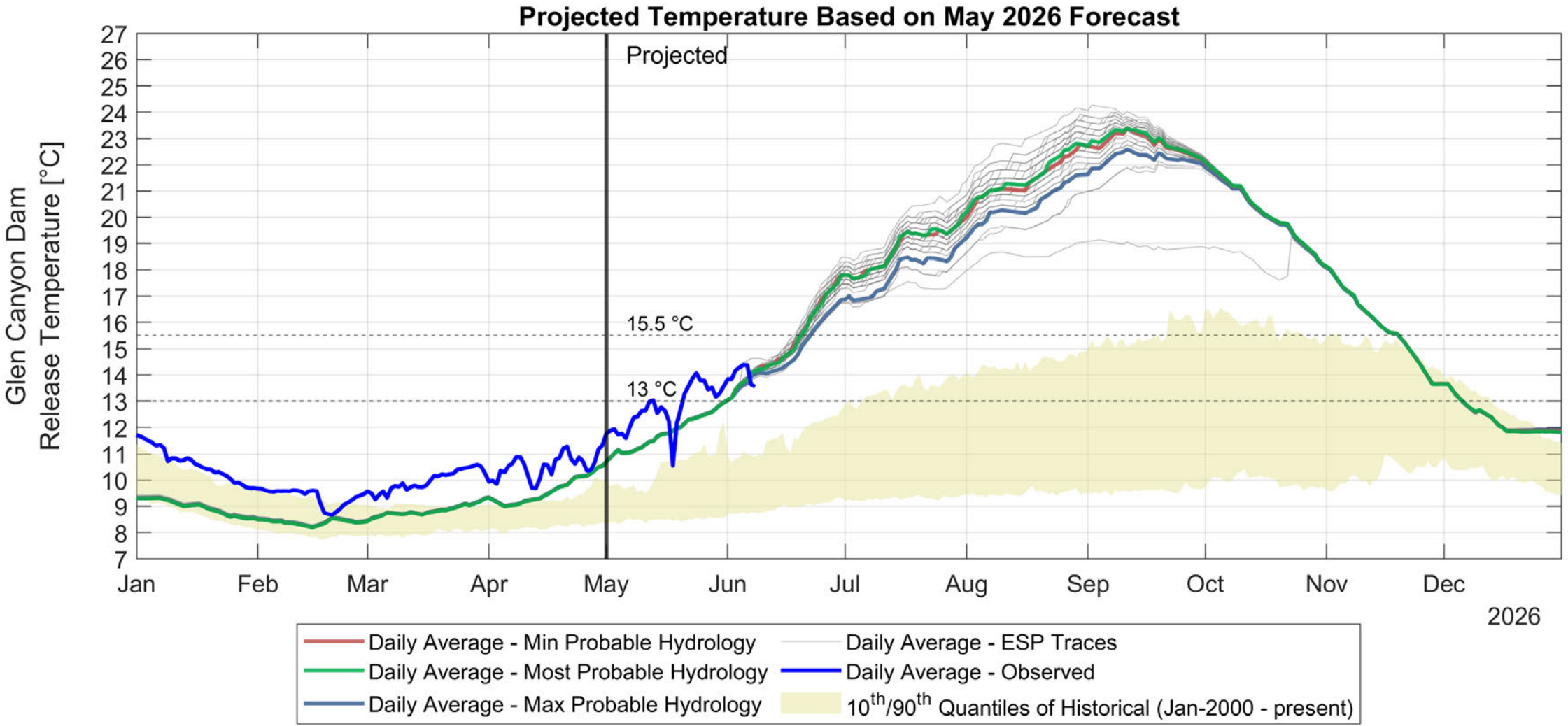
Potential Lake Powell Monthly Release Volume Distribution

Release Scenarios for Water Year 2026

Based on May 2026 Modeling



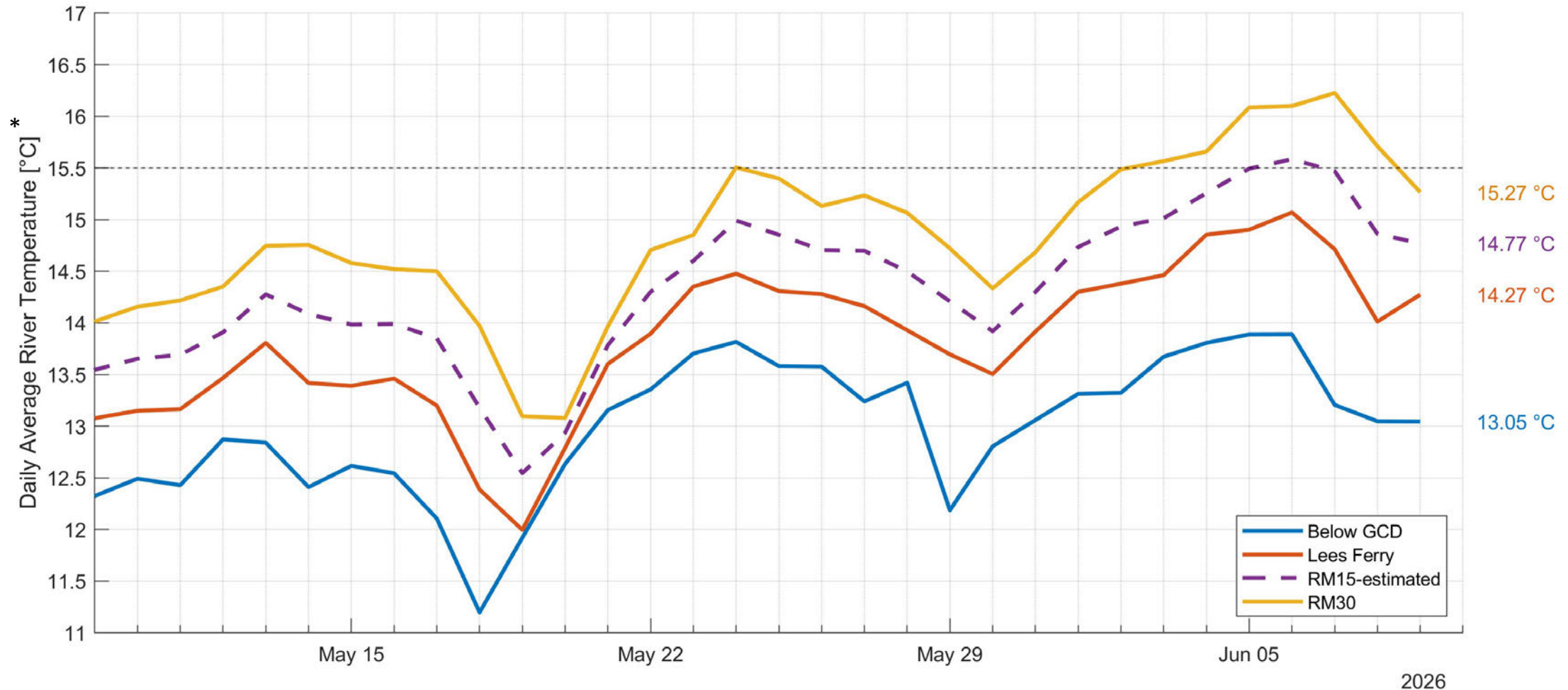
Glen Canyon Dam Release - Projected Temperature (*Eppehimer et al, 2024 model)



* <https://doi.org/10.1101/2024.01.23.576966>



Observed River Temperatures

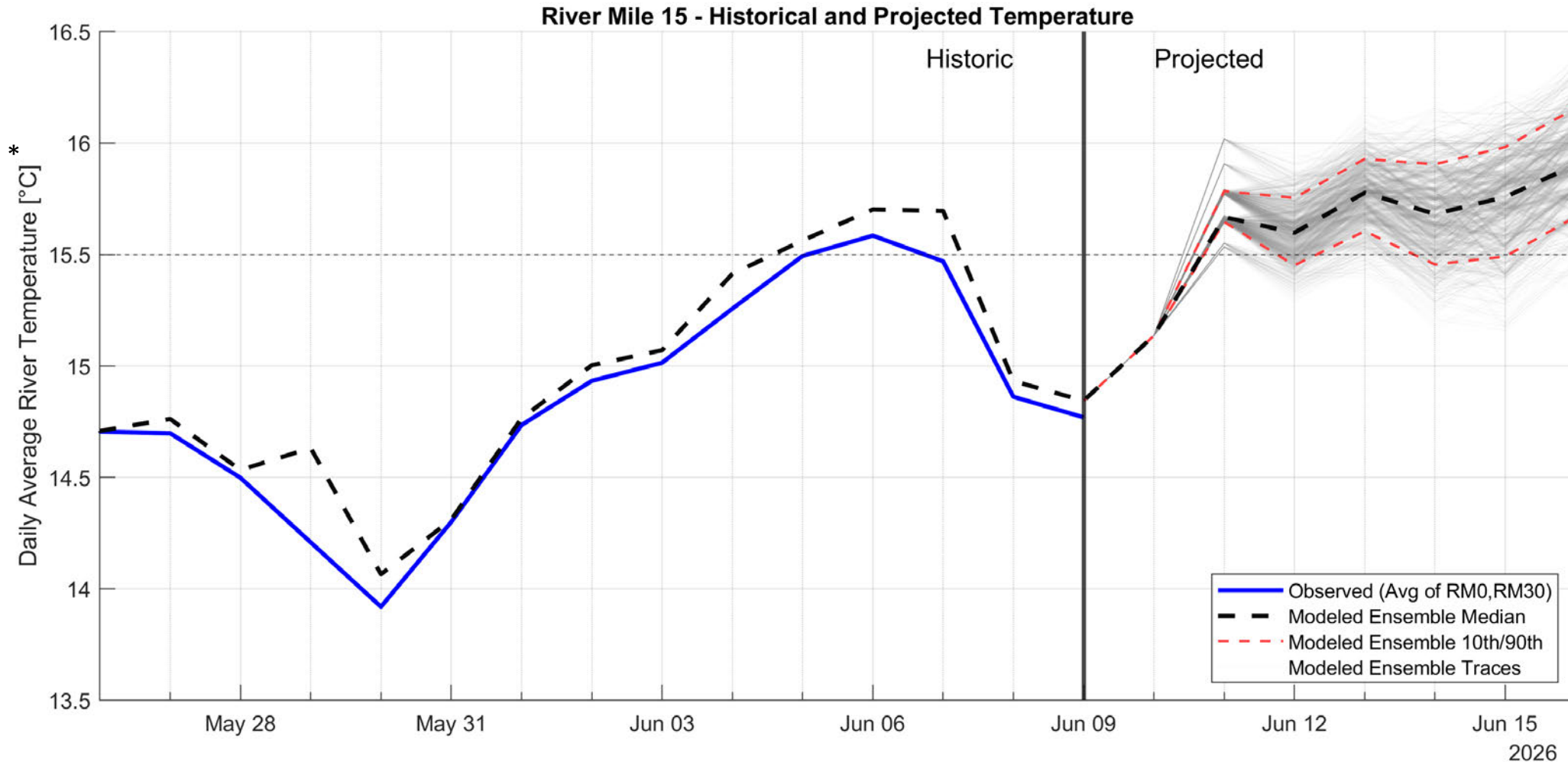


* Credit to USGS for data. Preliminary, not for citation.



River 15 Near-Term Forecast

Likely trigger met
after June 13



* Credit to USGS for data. Preliminary, not for citation.

Ensemble = CRMMS traces x GFS traces = 1116 traces

