



— BUREAU OF —
RECLAMATION

LTEMP Experiments Update

TWG Meeting February 5, 2026

LTEMP Experiments

“The overall approach attempts to strike a balance between identifying specific experiments and providing flexibility to implement those experiments when resource conditions are appropriate.”

“...rather than proposing a prescriptive approach to experimentation, an adaptive management-based approach that is responsive and flexible will be used to adapt to changing environmental and resource conditions...”

--2016 LTEMP ROD, p. B-9



LTEMP Process for Experiments

- Annual Reporting and TWG meetings
- Notification and Consultation to Tribes & PA Parties
- Implementation / Planning Team Recommendation
- DOI decision

1.4 COMMUNICATION AND CONSULTATION PROCESS FOR ALTERNATIVE D

To determine whether conditions are suitable for implementing or discontinuing experimental treatments or management actions, the DOI will schedule implementation/planning meetings or calls with the DOI bureaus (USGS, NPS, FWS, BIA, and Reclamation), WAPA, AZGFD, and one liaison from each Basin State and from the UCRC, as needed or requested by the participants. The implementation/planning group will strive to develop a consensus recommendation to bring forth to the DOI regarding resource issues as detailed at the beginning of this section, as well as including WAPA's assessment of the status of the Basin Fund. The Secretary of the Interior will consider the consensus recommendations of the implementation/planning group, but retains sole discretion to decide how best to accomplish operations and experiments in any given year pursuant to the ROD and other binding obligations.

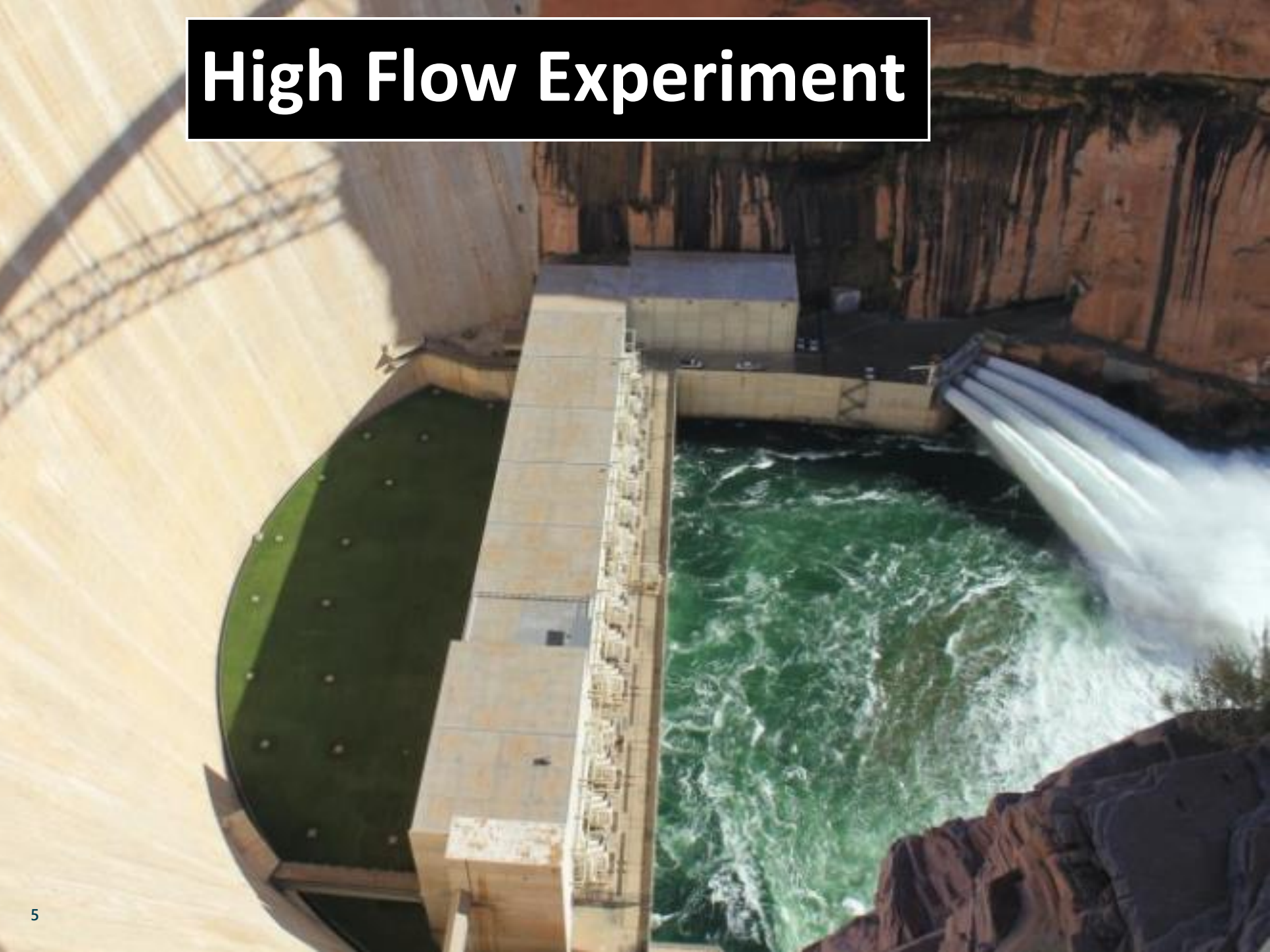


Potential LTEMP Flow Experiments

- Sediment (High Flow Experiments)
 - Spring HFE
 - Proactive spring HFE
 - Fall HFE
 - Fall HFE extended duration (up to 250 hr)
- Aquatic Resource
 - Macroinvertebrate Flow
 - Trout Management Flows
 - Low summer flows (2nd ten years of LTEMP)
- LTEMP SEIS
 - Smallmouth Bass Flows
 - HFE protocol revision



High Flow Experiment



LTEMP SEIS ROD Language

- “Planning for HFE releases will follow the planning and implementation process described in Section 7 of the 2016 LTEMP ROD, including close monitoring of all experimental treatments for unacceptable adverse impacts on important resources. Sand budget models will be run throughout the fall to determine whether sufficient sediment is available to conduct an HFE release. If sufficient sediment is available in the fall, the planning and implementation team may recommend conducting the fall HFE release or deferring implementation to the spring implementation window. Prior to the spring implementation window, the planning and implementation process will again be used to provide a recommendation on the duration, magnitude, and timing of the spring HFE release. If the HFE release is conducted, sediment accounting will restart on July 1. If, through the planning and implementation process, the recommendation is not to conduct an HFE release despite sufficient sediment, the remaining mass balance at the end of June will be carried into the new accounting period.”



Spring 2026 HFE Timeline

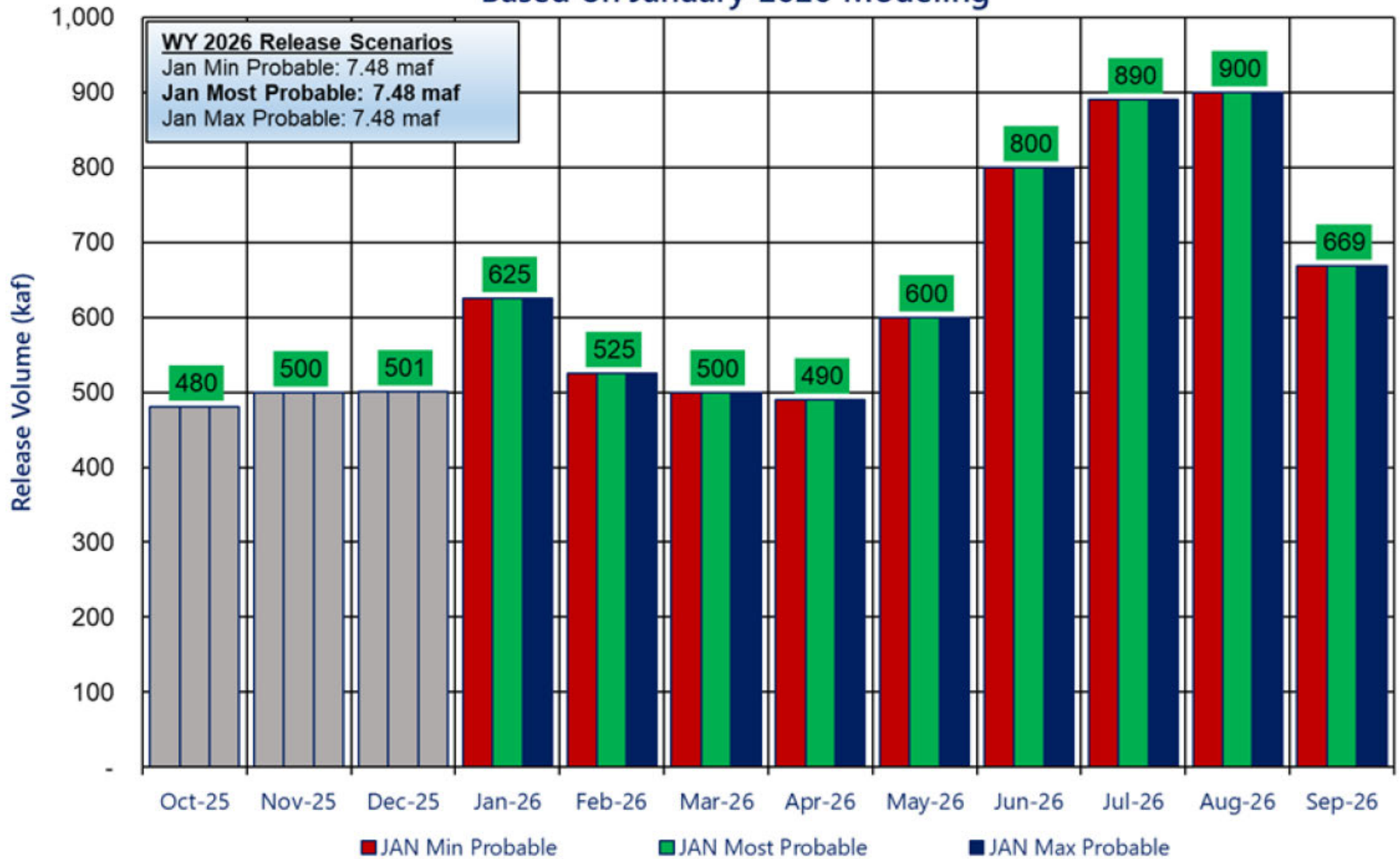
- No Fall 2025 HFE
- Sediment Trigger = Yes
- HFE Timeline
 - Early Feb – final model run to determine magnitude and duration
 - Mid Feb– PI team begins to meet and notification to tribes
 - Late Feb - AMWG update
 - March – Tech report
 - End of March – PI recommendation
 - May-June – Possible implementation



Potential Lake Powell Monthly Release Volume Distribution

Release Scenarios for Water Year 2026

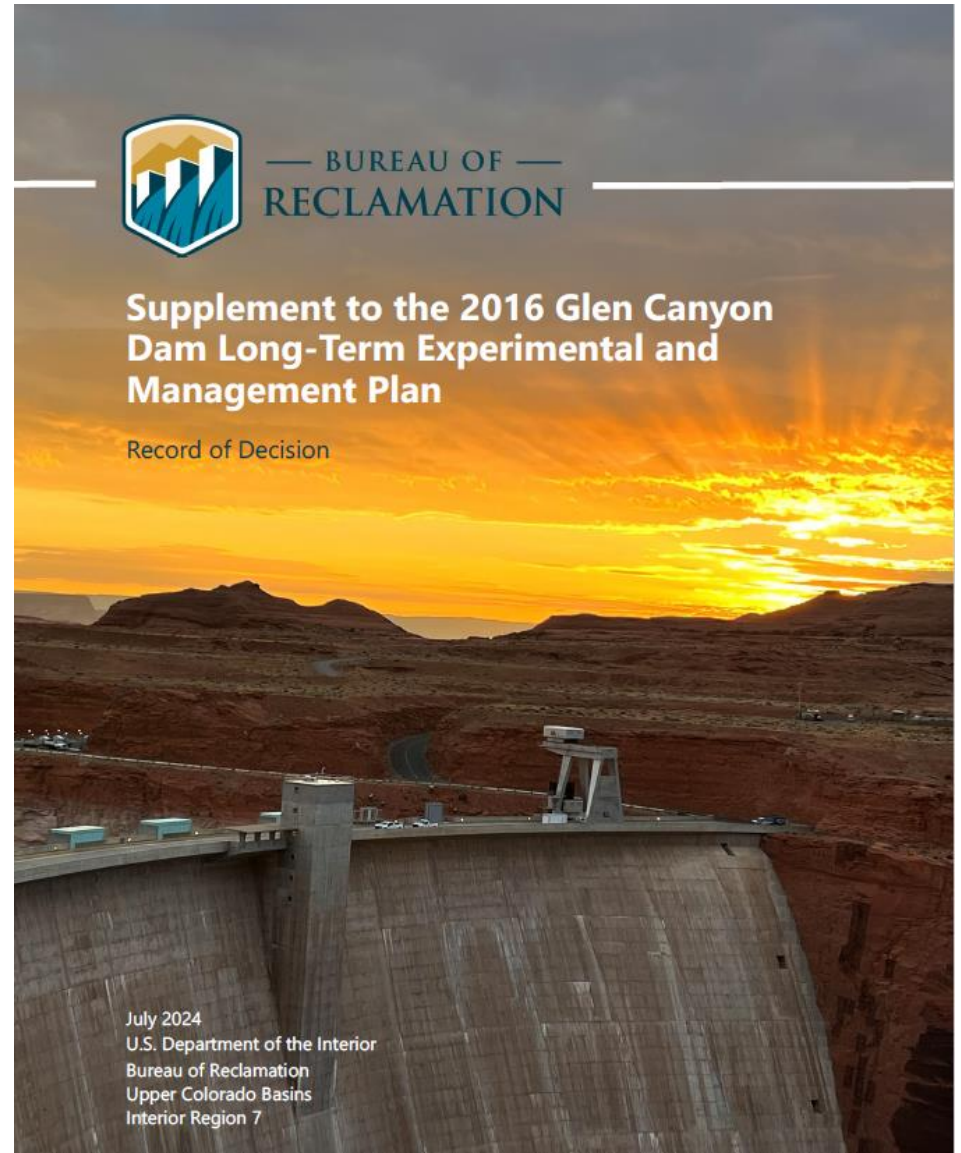
Based on January 2026 Modeling



Smallmouth Bass Flows

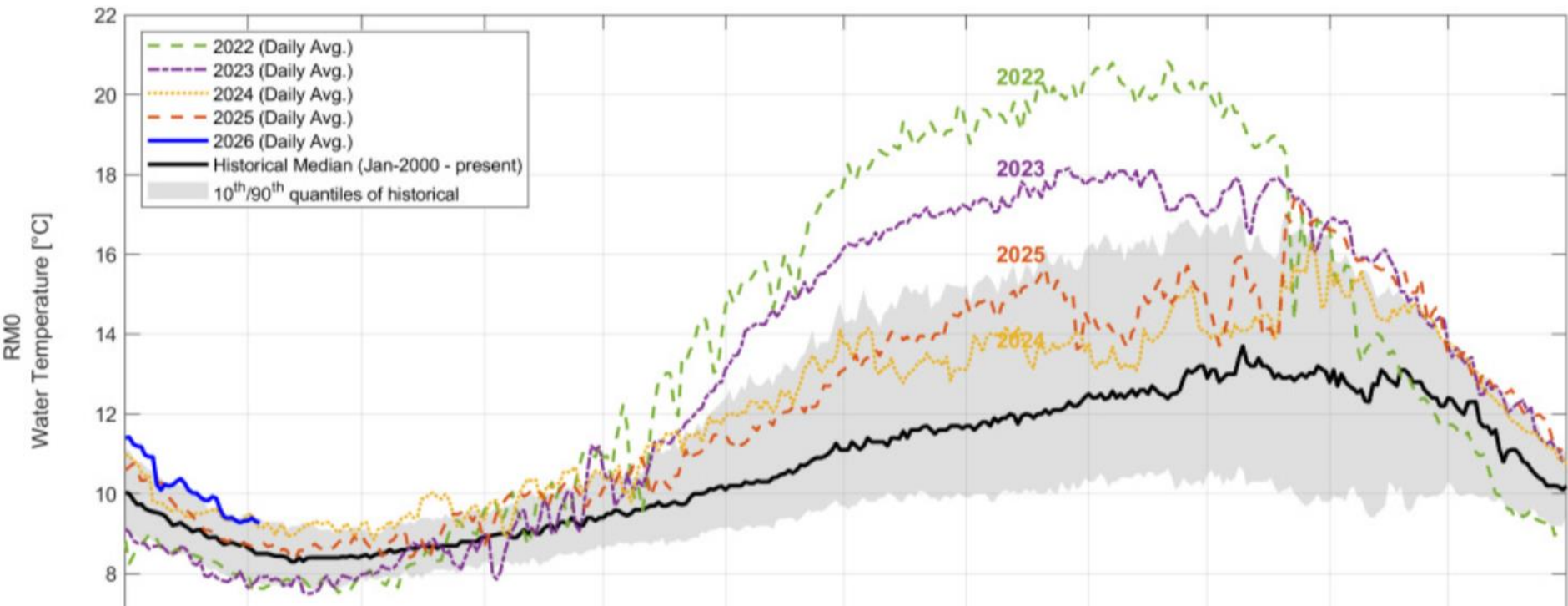
Record of Decision

- Operational Flows (2024-2027)
 - Cool mix is the preferred alternative for 2024
 - Cool Mix Alternative and the other alternatives possible in 2025-2027 (if needed).
- 2024
 - Cool Mix
 - RM 61
 - July 9-November 18
 - No YOY SMB detected
 - ~\$19 million
- 2025
 - Cool Mix
 - RM 30
 - August 3 – October 20
 - No YOY SMB detected
 - \$6.5 million



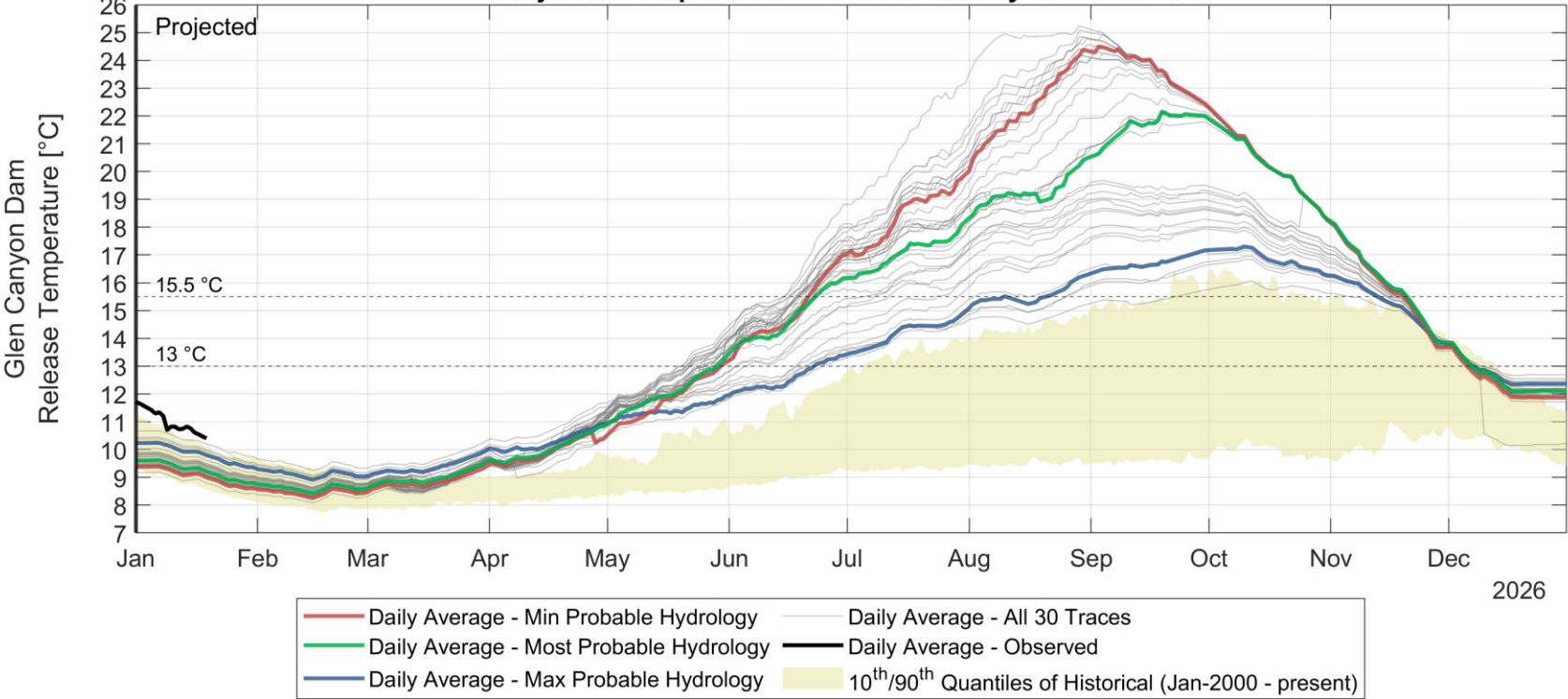
Flow Option - River Mile - Off Ramp Date	Sum	Mean (Millions)	Median (Millions)	90th percentile (Millions)	Max (Millions)	# Responses
Cool Mix - RM 30 - October 1st	66	\$ 1.96	\$ 1.61	\$ 4.15	\$ 10.70	7
Cool Mix - RM 30 - October 20th	55	\$ 2.83	\$ 2.48	\$ 5.41	\$ 12.64	6
Cool Mix - RM 60 - October 20th	28	\$ 6.03	\$ 5.95	\$ 9.58	\$ 19.04	3
Cool Mix - RM 60 - October 1st	25	\$ 4.95	\$ 4.82	\$ 8.11	\$ 17.01	3
Cool Mix - RM 60 -Temperature Driven	20	\$ 6.26	\$ 6.17	\$ 10.02	\$ 20.41	2
Cool Mix - RM 15 - October 1st	18	\$ 1.15	\$ 0.87	\$ 2.70	\$ 8.52	2
Cool Mix - RM 15 -Temperature Driven	16	\$ 2.05	\$ 1.73	\$ 4.22	\$ 11.68	2
Cool Mix - RM 30 -Temperature Driven	16	\$ 3.03	\$ 2.65	\$ 5.84	\$ 13.95	2
No SMB Flow - No Action	10	\$ -	\$ -	\$ -	\$ -	1
Cool Mix - RM 0 - October 1st	10	\$ 0.68	\$ 0.32	\$ 1.87	\$ 6.42	1
Cool Mix - RM 15 - October 20th	10	\$ 1.88	\$ 1.61	\$ 3.84	\$ 10.39	1
Cool Mix - RM 30 - September 15th	9	\$ 1.14	\$ 0.82	\$ 2.82	\$ 8.29	1
Non bypass - RM 60 -Temperature Driven	9	\$ 0.93	\$ 0.88	\$ 1.53	\$ 3.44	1
Cool Mix - RM 15 - September 15th	8	\$ 0.59	\$ 0.35	\$ 1.52	\$ 6.29	1
Non bypass - RM 0 -Temperature Driven	8	\$ 0.34	\$ 0.27	\$ 0.77	\$ 2.25	1
Non bypass - RM 30 - October 20th	8	\$ 0.52	\$ 0.47	\$ 0.90	\$ 2.14	1
Cool Mix - RM 0 -Temperature Driven	0	\$ 1.41	\$ 1.01	\$ 3.27	\$ 9.49	0
Cool Mix - RM 0 - October 20th	0	\$ 1.27	\$ 0.95	\$ 2.90	\$ 8.22	0
Cool Mix - RM 0 - September 15th	0	\$ 0.29	\$ -	\$ 0.93	\$ 4.15	0
Cool Mix - RM 60 - September 15th	0	\$ 3.74	\$ 3.57	\$ 6.31	\$ 14.52	0
Non bypass - RM 0 - October 20th	0	\$ 0.30	\$ 0.25	\$ 0.65	\$ 1.95	0
Non bypass - RM 0 - October 1st	0	\$ 0.18	\$ 0.11	\$ 0.46	\$ 1.77	0
Non bypass - RM 0 - September 15th	0	\$ 0.07	\$ -	\$ 0.22	\$ 1.72	0
Non bypass - RM 15 -Temperature Driven	0	\$ 0.45	\$ 0.40	\$ 0.89	\$ 2.31	0
Non bypass - RM 15 - October 20th	0	\$ 0.40	\$ 0.36	\$ 0.78	\$ 2.02	0
Non bypass - RM 15 - October 1st	0	\$ 0.27	\$ 0.22	\$ 0.59	\$ 1.83	0
Non bypass - RM 15 - September 15th	0	\$ 0.13	\$ 0.08	\$ 0.38	\$ 1.80	0
Non bypass - RM 30 -Temperature Driven	0	\$ 0.59	\$ 0.53	\$ 1.02	\$ 2.41	0
Non bypass - RM 30 - October 1st	0	\$ 0.38	\$ 0.32	\$ 0.72	\$ 1.91	0
Non bypass - RM 30 - September 15th	0	\$ 0.22	\$ 0.15	\$ 0.52	\$ 1.81	0
Non bypass - RM 60 - October 20th	0	\$ 0.86	\$ 0.82	\$ 1.41	\$ 3.24	0
Non bypass - RM 60 - October 1st	0	\$ 0.72	\$ 0.66	\$ 1.24	\$ 3.16	0
Non bypass - RM 60 - September 15th	0	\$ 0.56	\$ 0.50	\$ 1.05	\$ 3.13	0

Historical Water Temperatures out of GCD



Glen Canyon Dam Release Temperature (*Eppheimer et al, 2024 model)

Projected Temperature Based on January 2026 Forecast



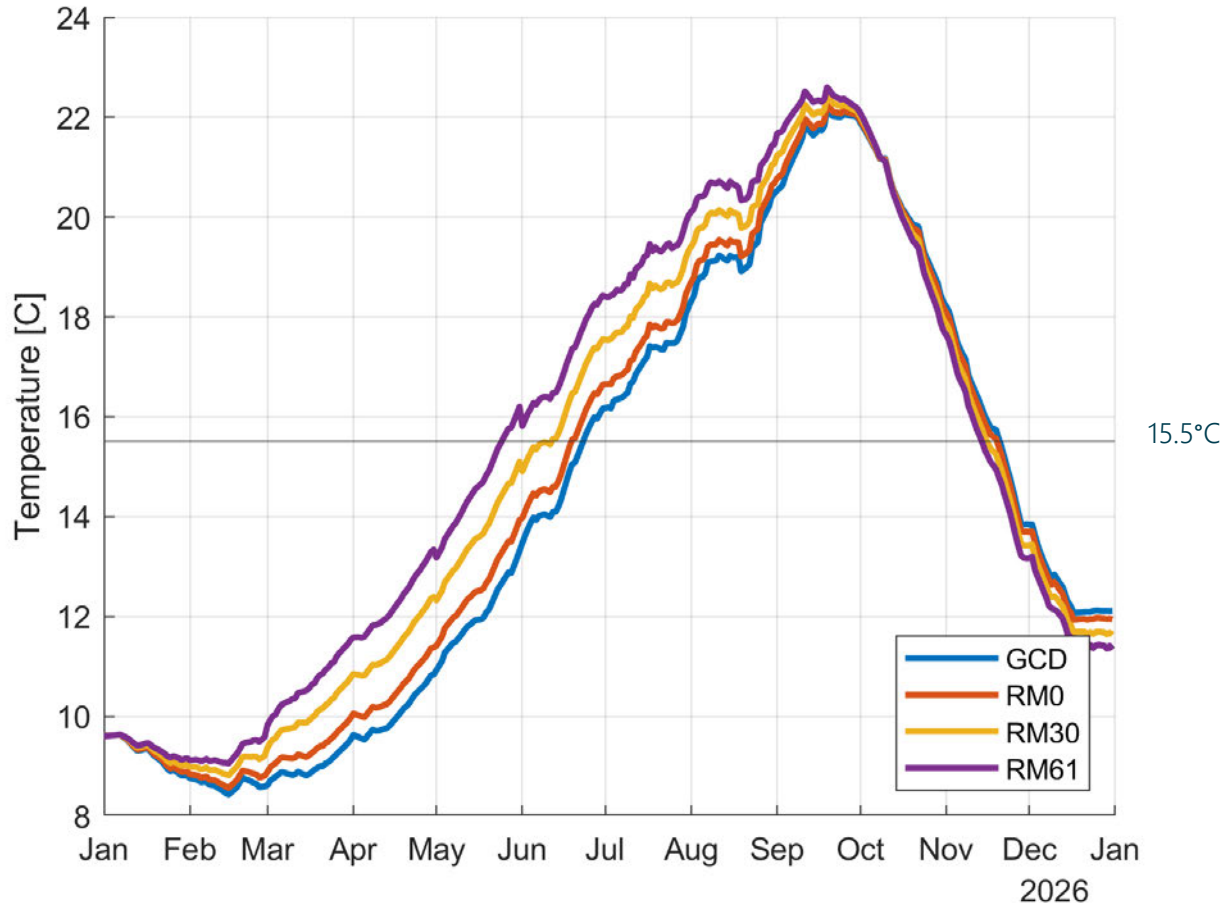
* <https://doi.org/10.1101/2024.01.23.576966>



Combined Temperature Predictions January 2026 Most Probable Hydrology

(*Dibble et al, 2020 model)

*<https://doi.org/10.1002/eap.2279>



Smallmouth Bass Flow Timeline

- Mid Feb– PI Team begins to meet and notification to tribes
- End of Feb – AMWG update
- Feb-March - Narrow down scenarios to screen
- April – TWG update
- Early April – Tech Team Report
- End of April – PI Recommendation
- Early June – Possible implementation



Questions?



— BUREAU OF —
RECLAMATION

