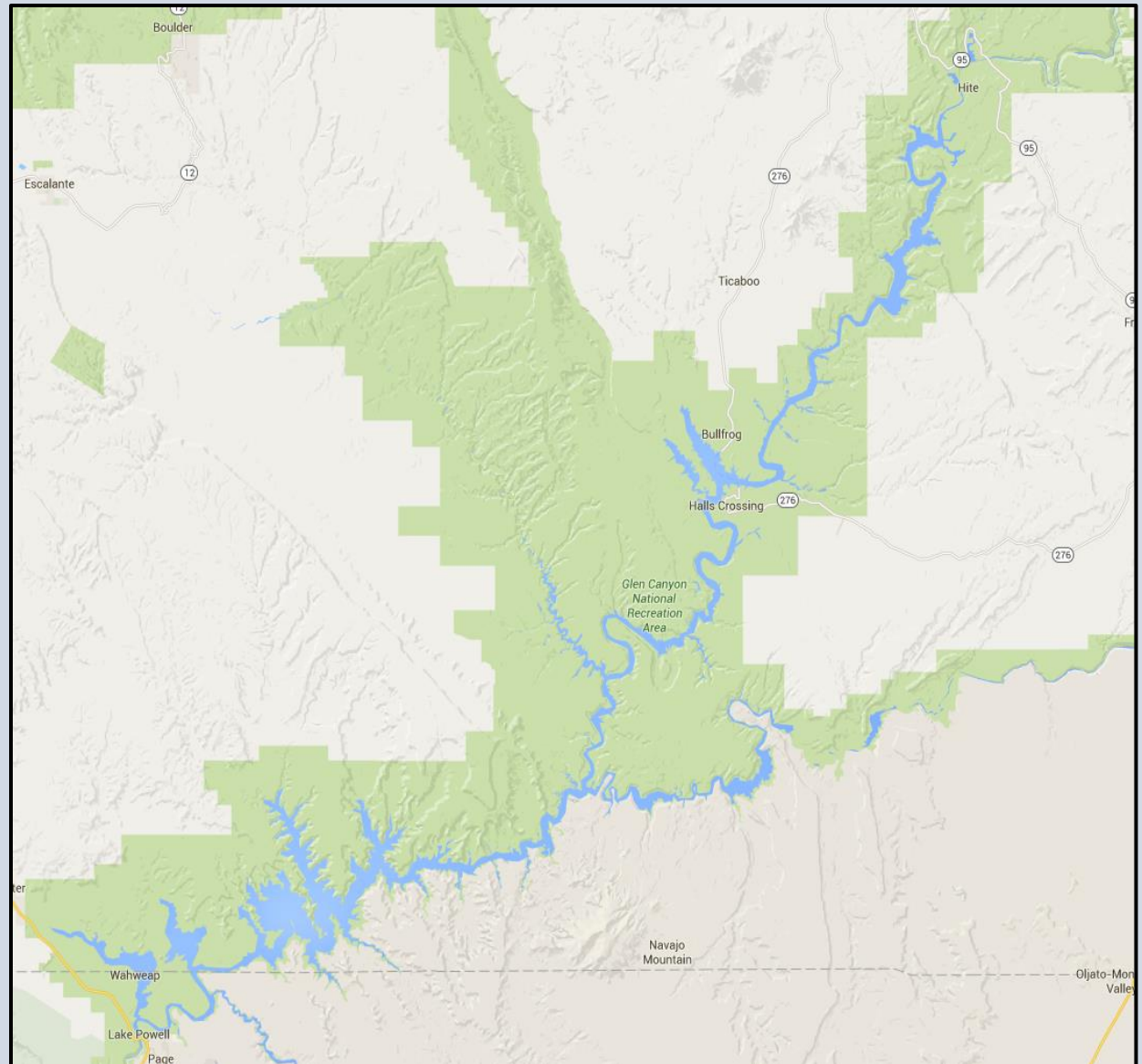


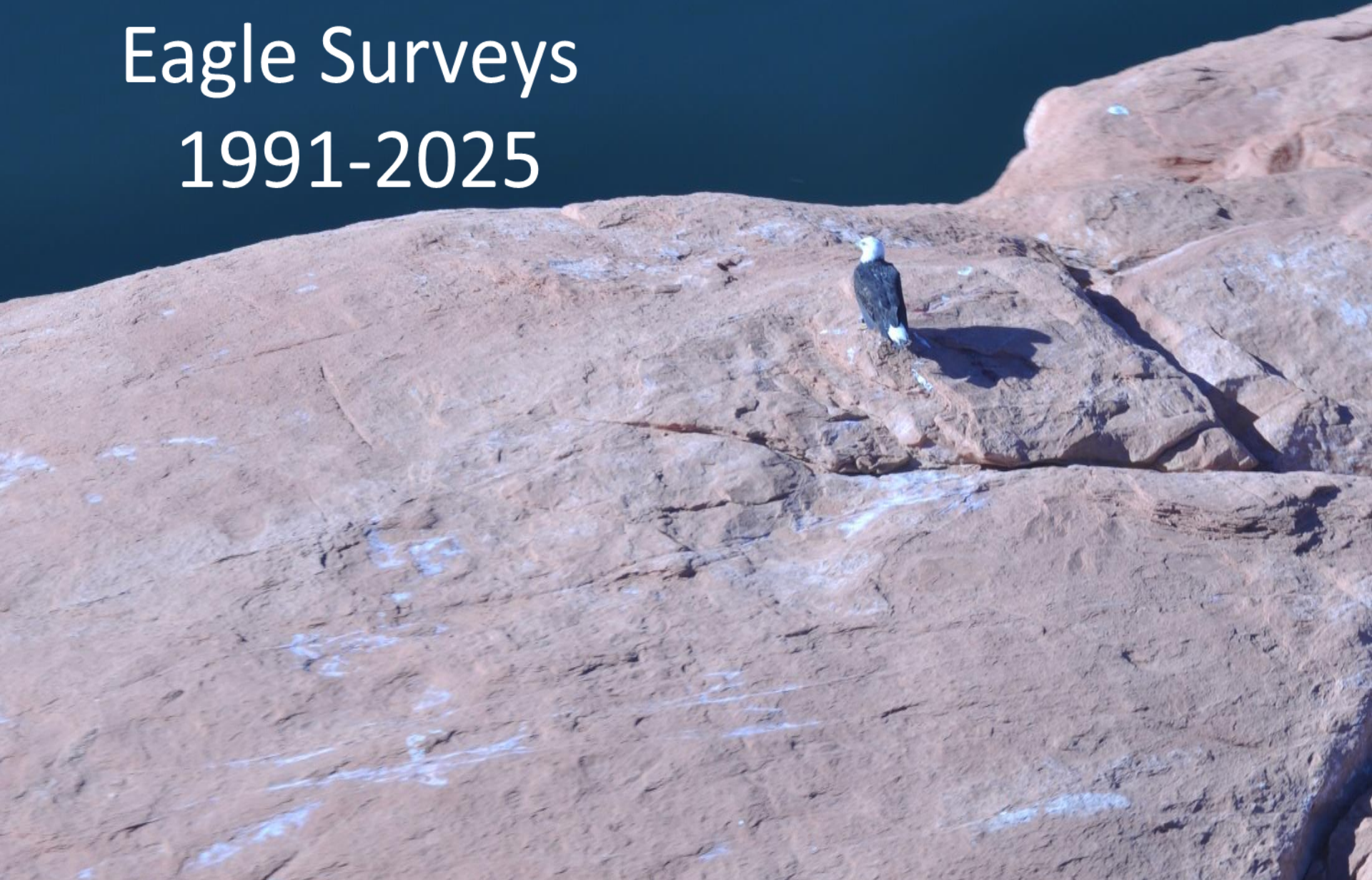


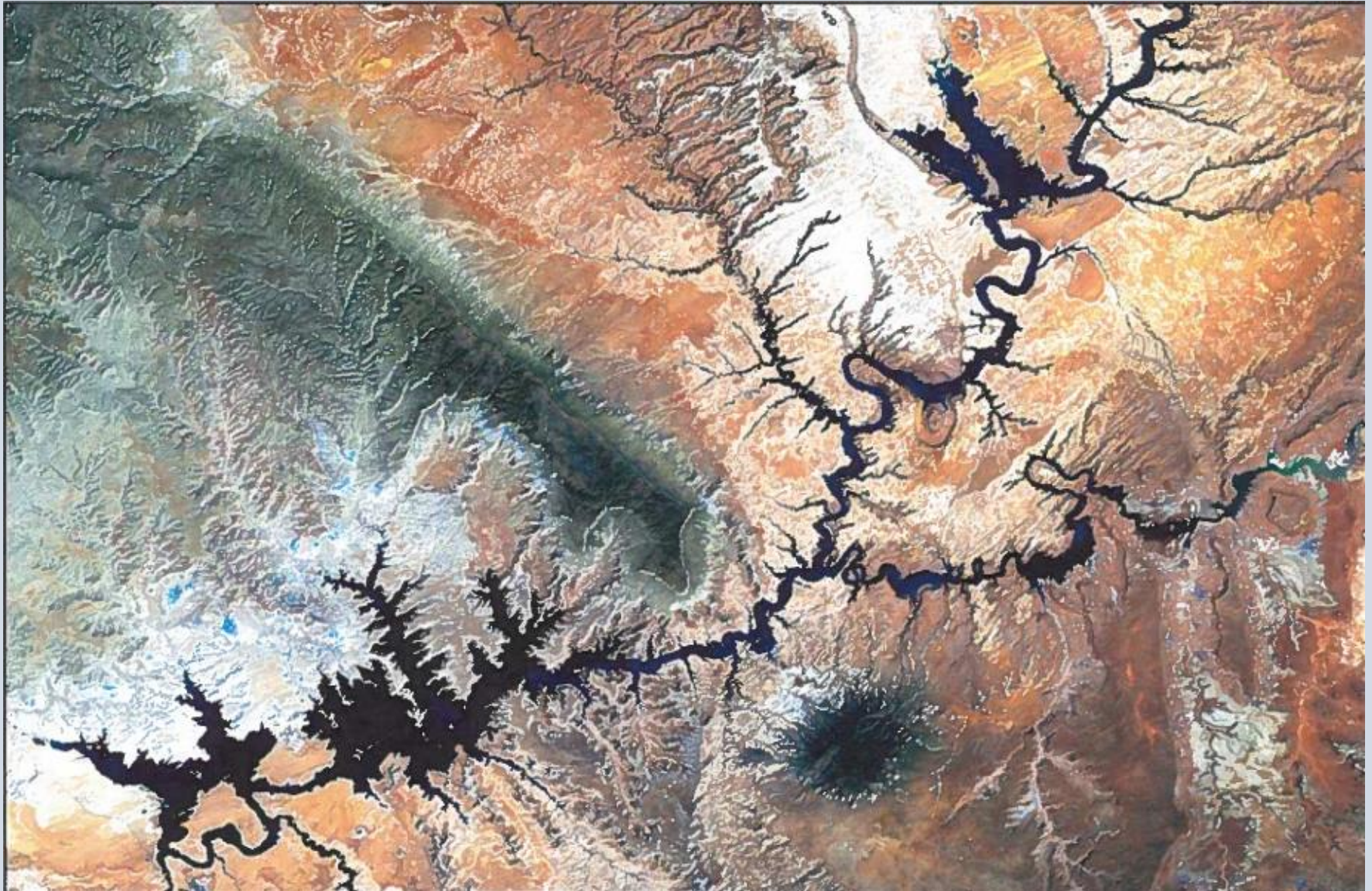
- 1.25 million acres
- GLCA within Utah & Arizona
- Lake Powell is 13% of the park
- 2nd largest reservoir
- Over 2 million miles of shoreline
- Welcomes over 5 million visitors a year





Eagle Surveys 1991-2025







- GLCA -
Performs
Winter Eagle
Survey - PASP
- Share data -
Arizona Game
& Fish
- USGS & US
Army Corps





- From Lee's Ferry to Hite
- Approx. 600 miles of shoreline
- Following same route as lake levels fluctuate



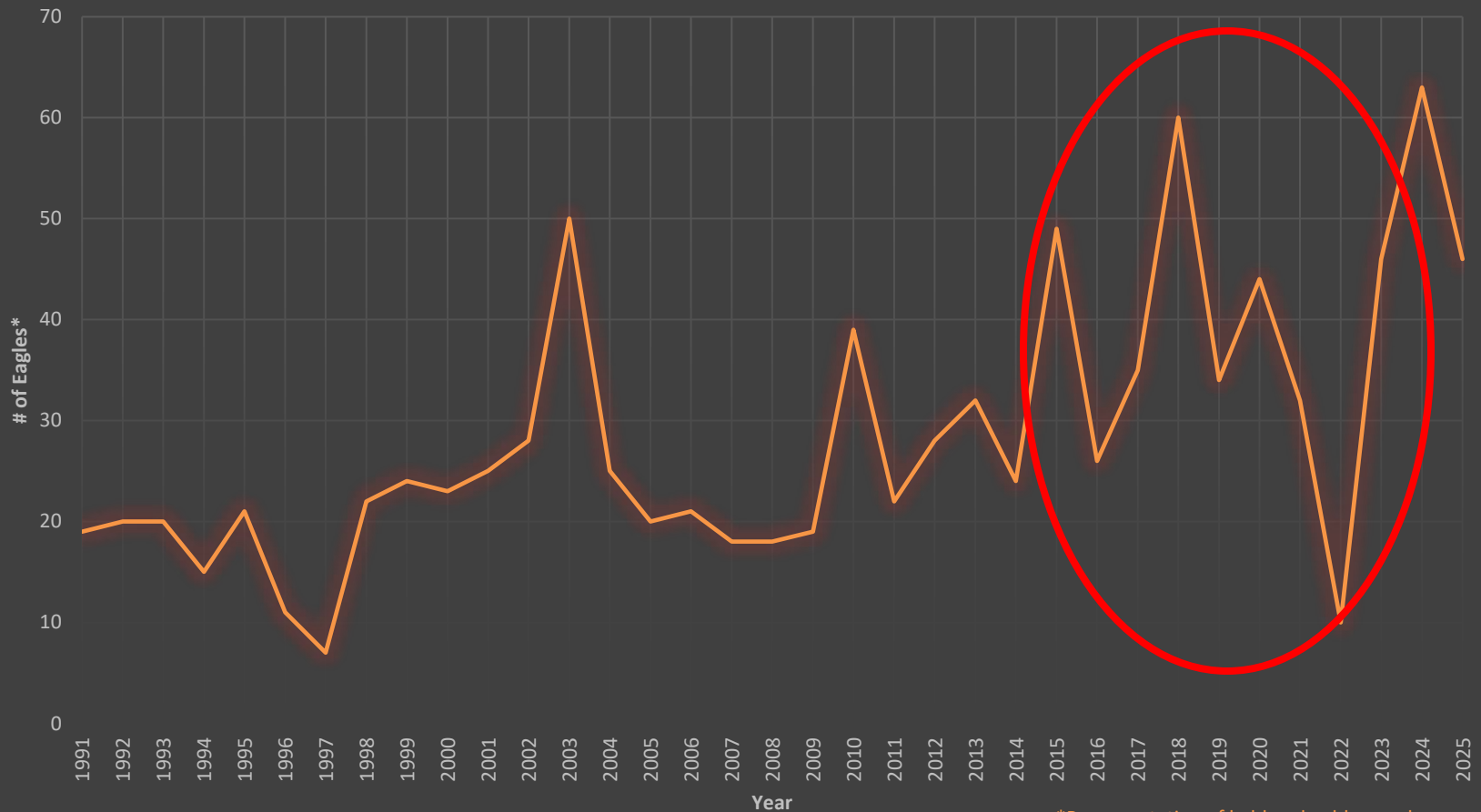


- Extreme conditions & environment
- Altered route in 2020 (no birds for several years)
- Counts vary widely
 - experience
 - circumstances





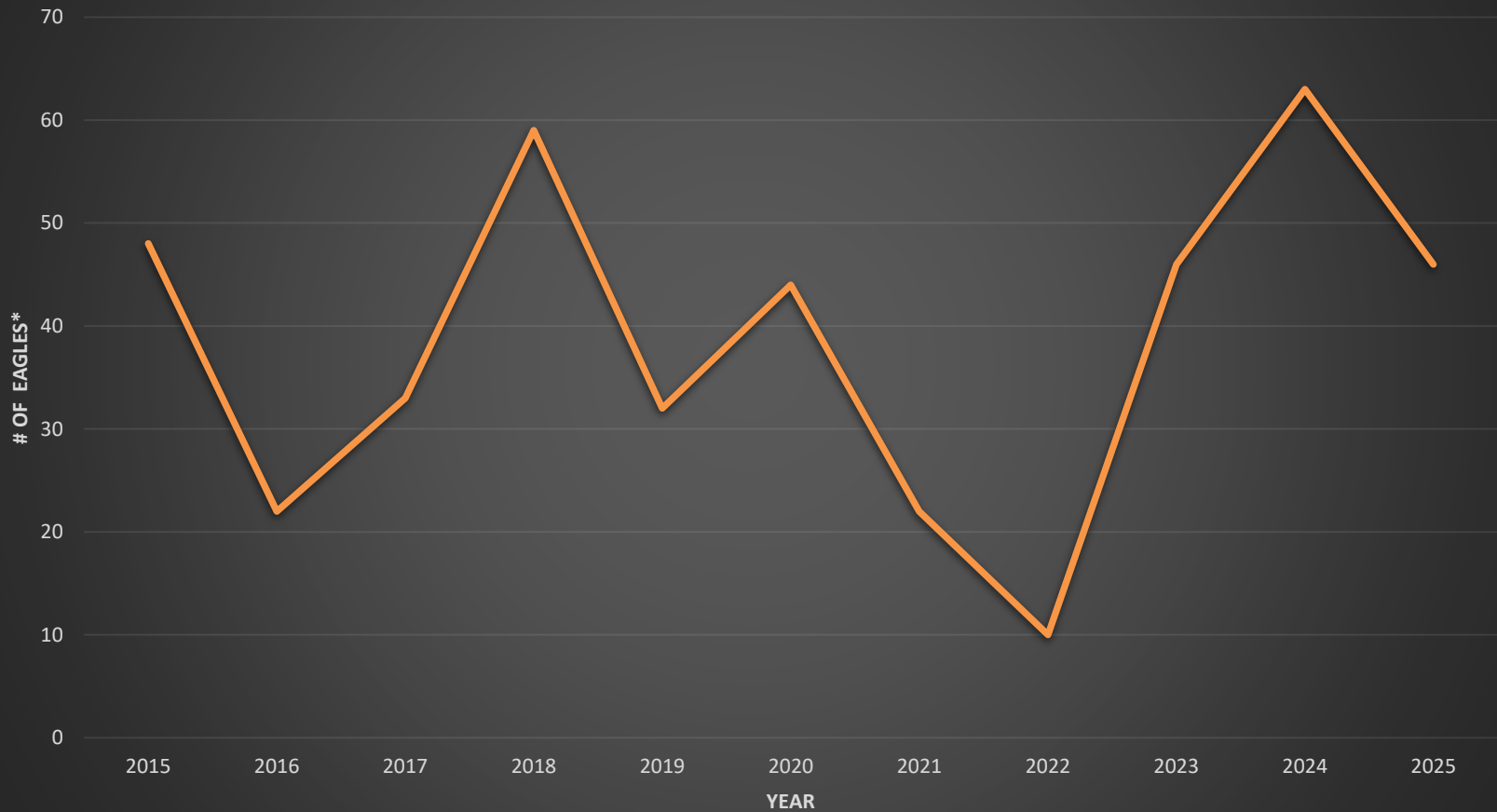
Glen Canyon NRA Eagle Survey



*Representative of bald and golden eagles



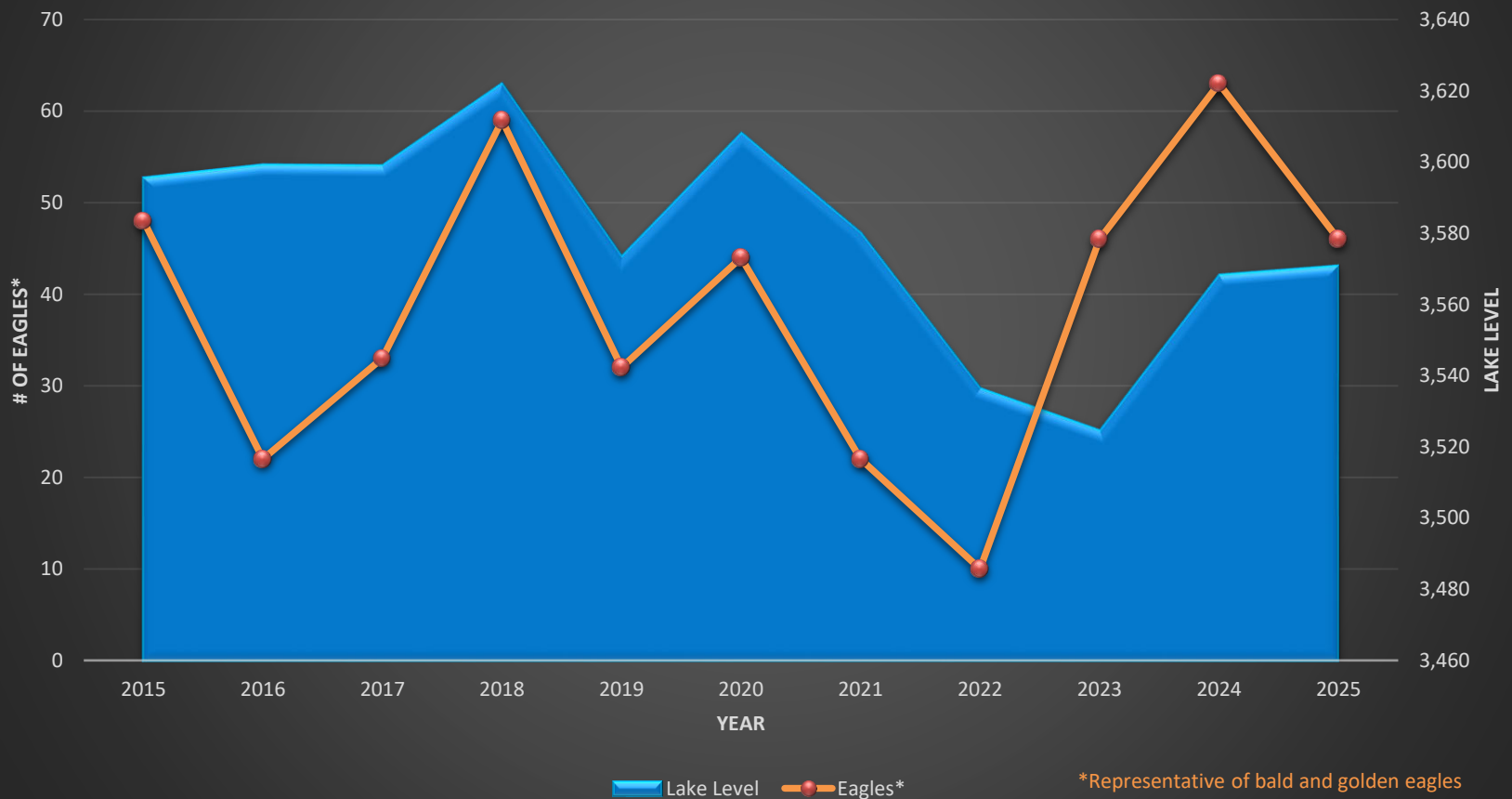
Glen Canyon NRA
Eagle Survey



*Representative of bald and golden eagles

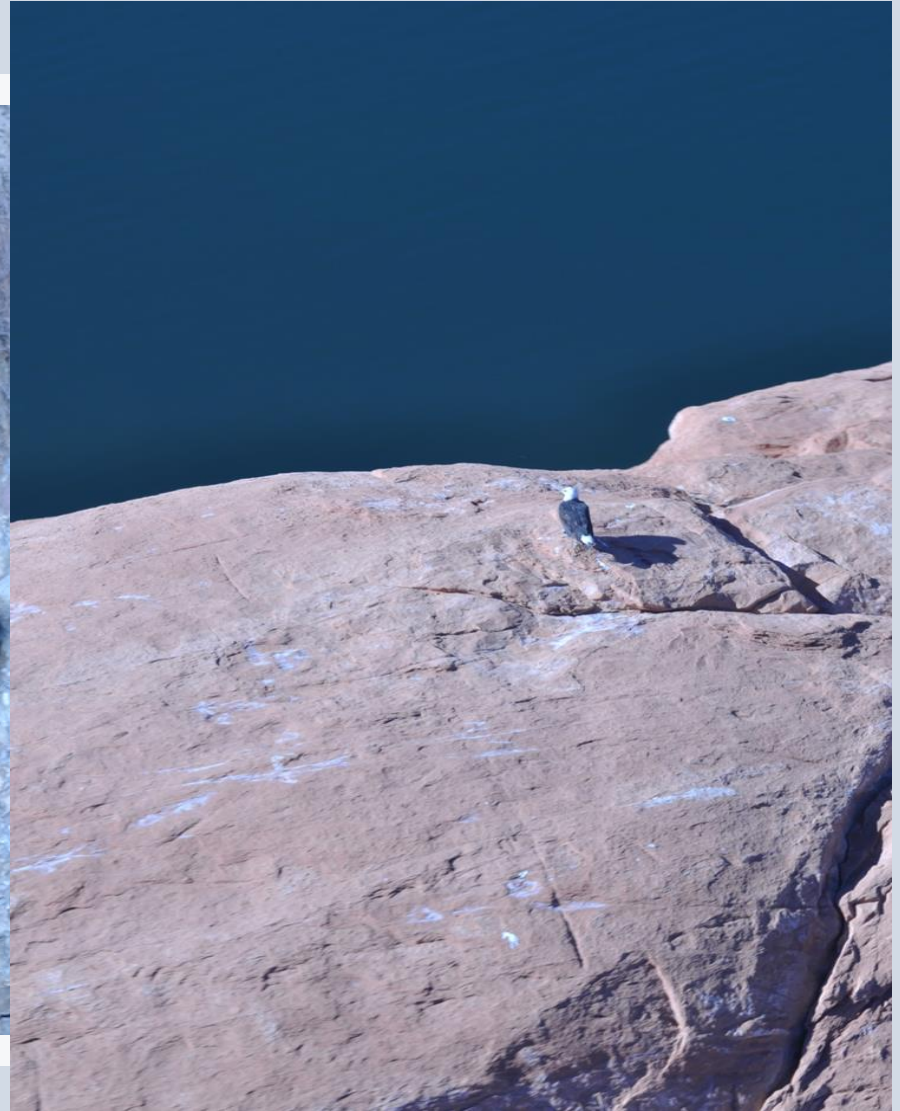


Glen Canyon NRA
Eagle Survey Numbers and
Lake Powell Water Levels





Thank you!



Colleen Allen

Yellow-billed Cuckoo Surveys at Glen Canyon 2023-2024



Yellow-billed Cuckoo. Macaulay Library





- Funding from National Parks Foundation for 2 year study
- Escalante River area because of Russian olive removal
- Good potential habitat
- Permit from USFWS, used active acoustic monitoring protocols and passive monitoring with sound recorders
- May – September of each year, crew hiked 200 miles per year



- No detections with active surveying.
- Two calls detected and verified, 1 each year through passive monitoring with recorders.
- Breeding not confirmed but presence is promising.