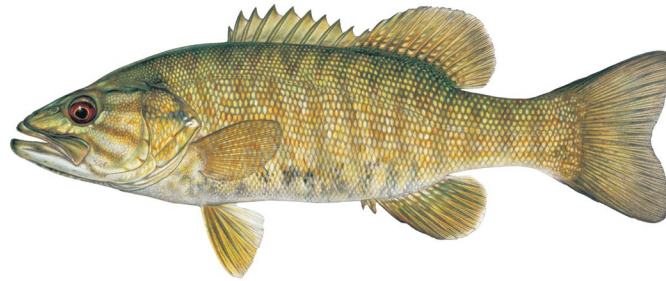
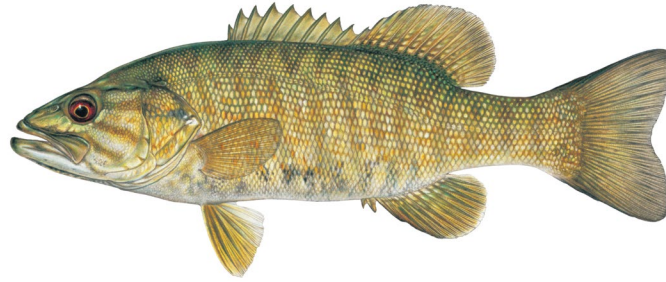


2024 Bass Nest Monitoring



Conor Clancy, Jeff Arnold, Matt O'Neill, Drew Eppehimer, Brian Hines

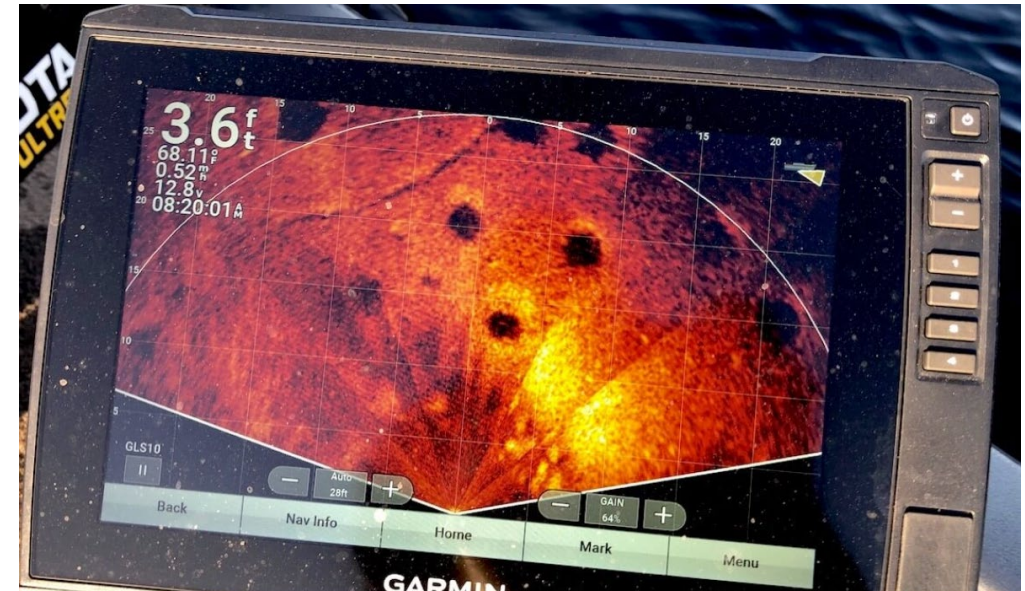
2024 Bass Nest Monitoring



Artificial nests



Sonar detection of
nests



Are bass spawning in Lees Ferry?

- Early nesting detection
- Improved targeting for removal efforts
- Nest disruption and adult removal

Questions

Note: not all questions will be addressed with the same certainty

1. *Distribution/Dispersal:*

How are SMB distributed throughout the sampled area?

2. *Reproduction:*

Is there *in situ* SMB spawning?

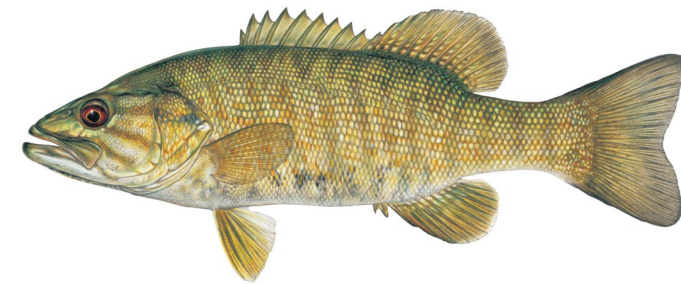
a. Where is it occurring? Hotspots?

b. When did it occur?

c. Can we use close-kinship analyses to differentiate entrainment vs local reproduction?

d. Is reproduction leading to recruitment of age-1 SMB? (next year sampling)

-Side Scan Sonar Detection of SMB Beds
-Artificial Spawning Beds



Questions

Note: not all questions will be addressed with the same certainty

5. Diet:

What are SMB eating in different locations at different life stages?

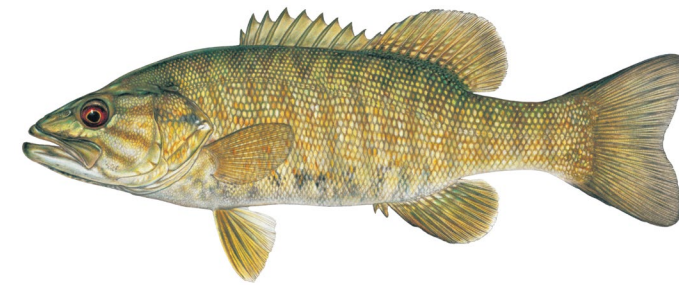
- a. What are rates of piscivory as a function of SMB size?
- b. Are there longitudinal relationships with stomach fullness or biomass?

6. Capture Efficiencies:

How efficient are different approaches to capturing SMB?

- a. Are there better approaches to catch different life stages?
- b. Are there better approaches to finding SMB nests/spawning areas?

-Side Scan Sonar Detection of SMB Beds



Artificial nesting habitat

- Provide excellent nesting habitat to lure bass to spawn where we can see them

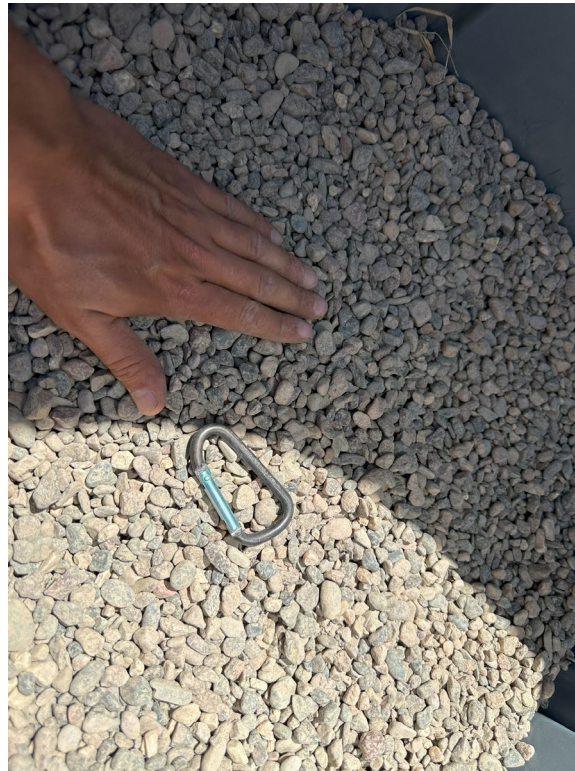
Artificial nesting habitat

- Two types of nests



Artificial nesting habitat

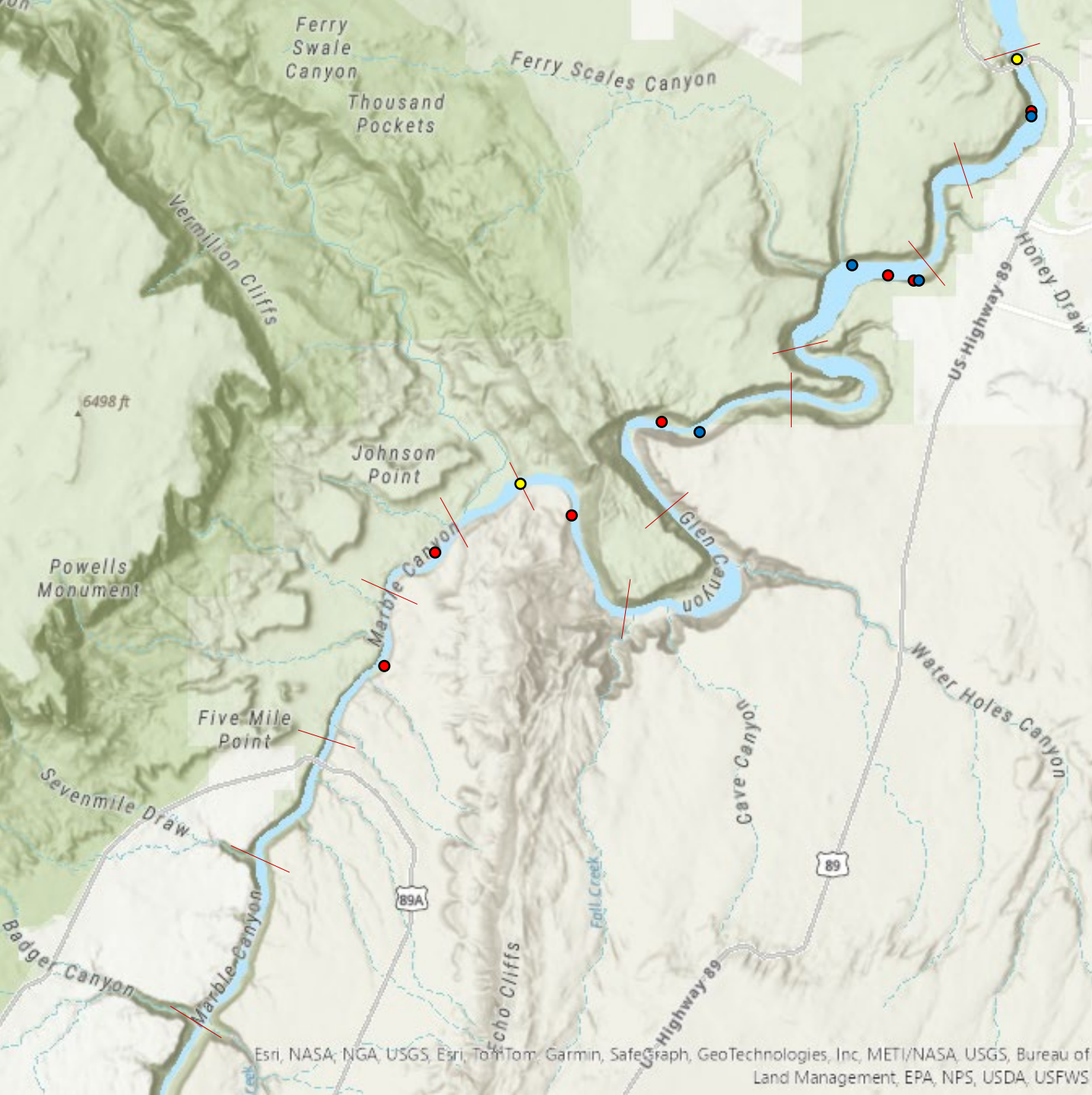
- Two types of nests
- Pea gravel substrate



Artificial nesting habitat

- Paired deployment
- 4 sites in Lees Ferry
- HOBO temp logger
- First nests placed in early July
- Monitored weekly for nesting





Sampling Reaches

- USGS Stream Gage
- NPS Temperature Logger
- Artificial bass nests

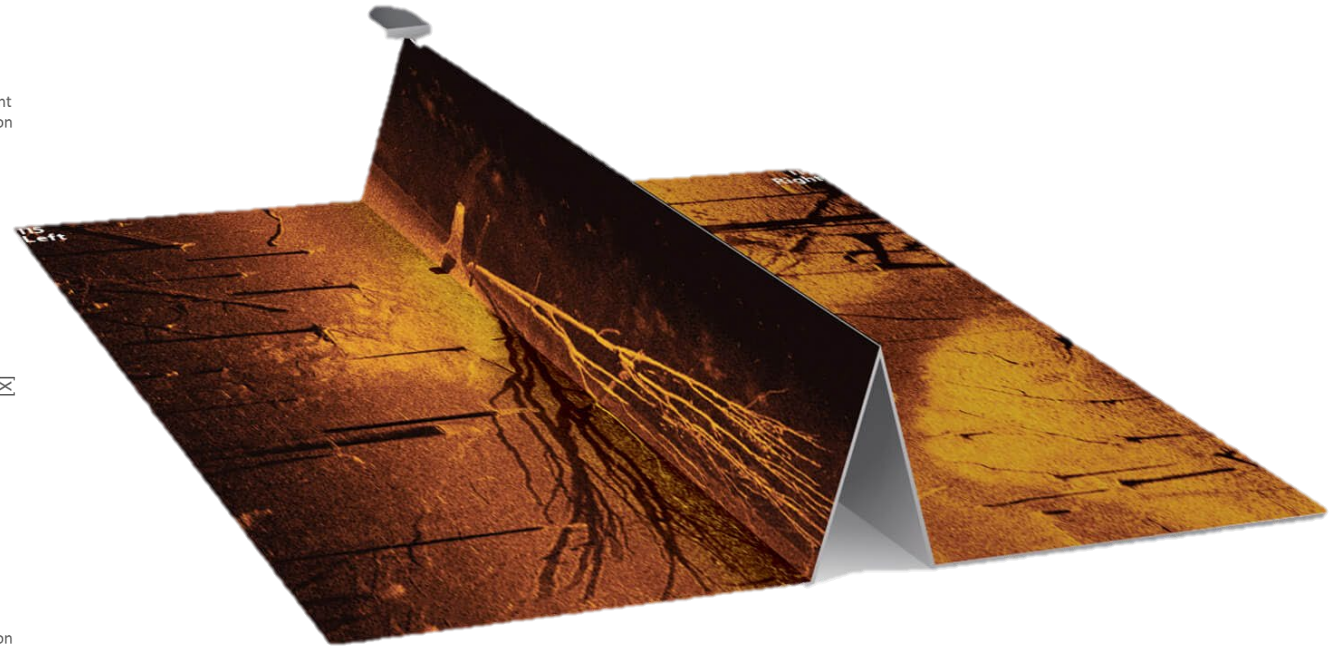
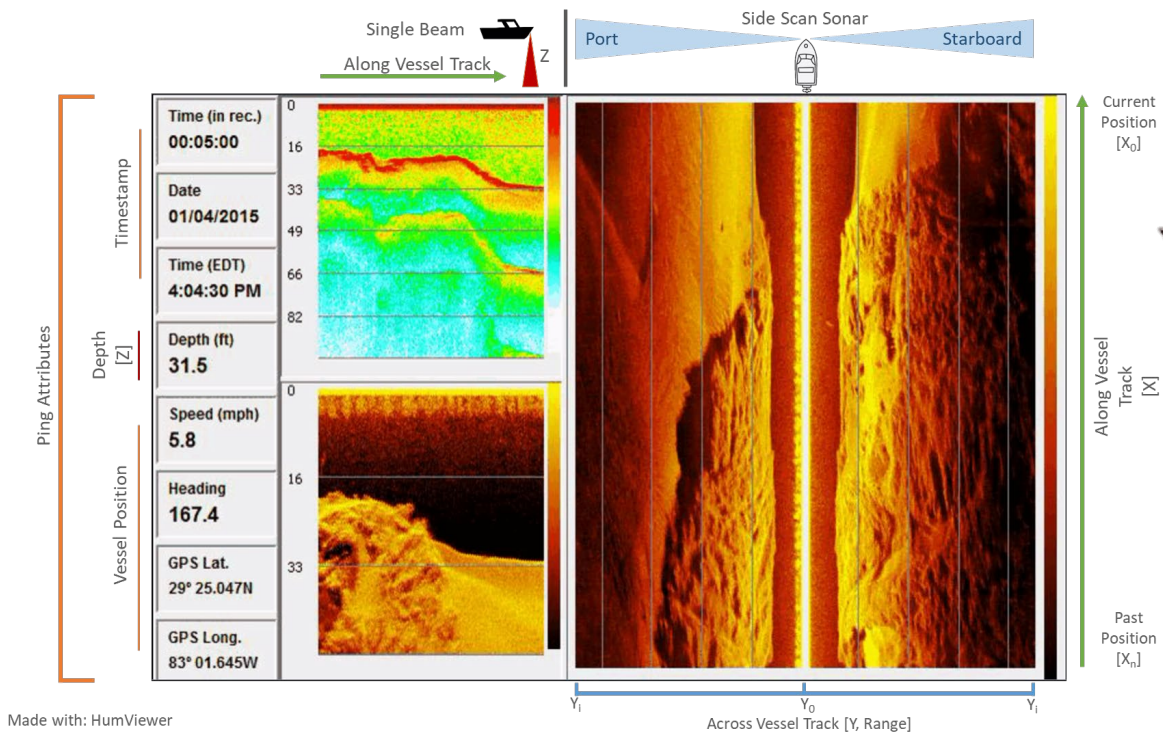


Side Scan Sonar nest detection

- Cameron Bodine, former NAU graduate student

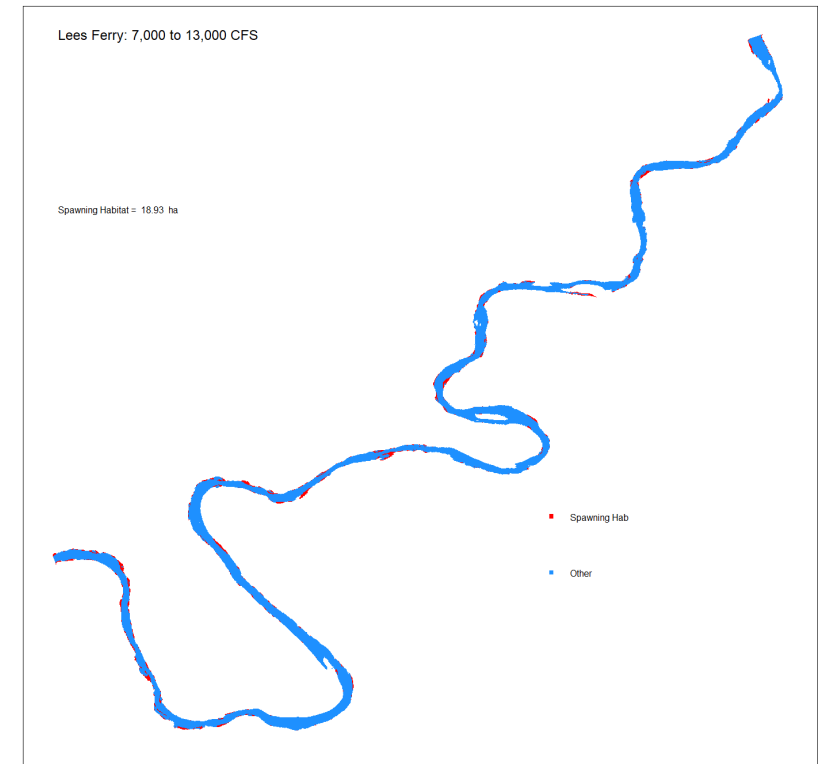
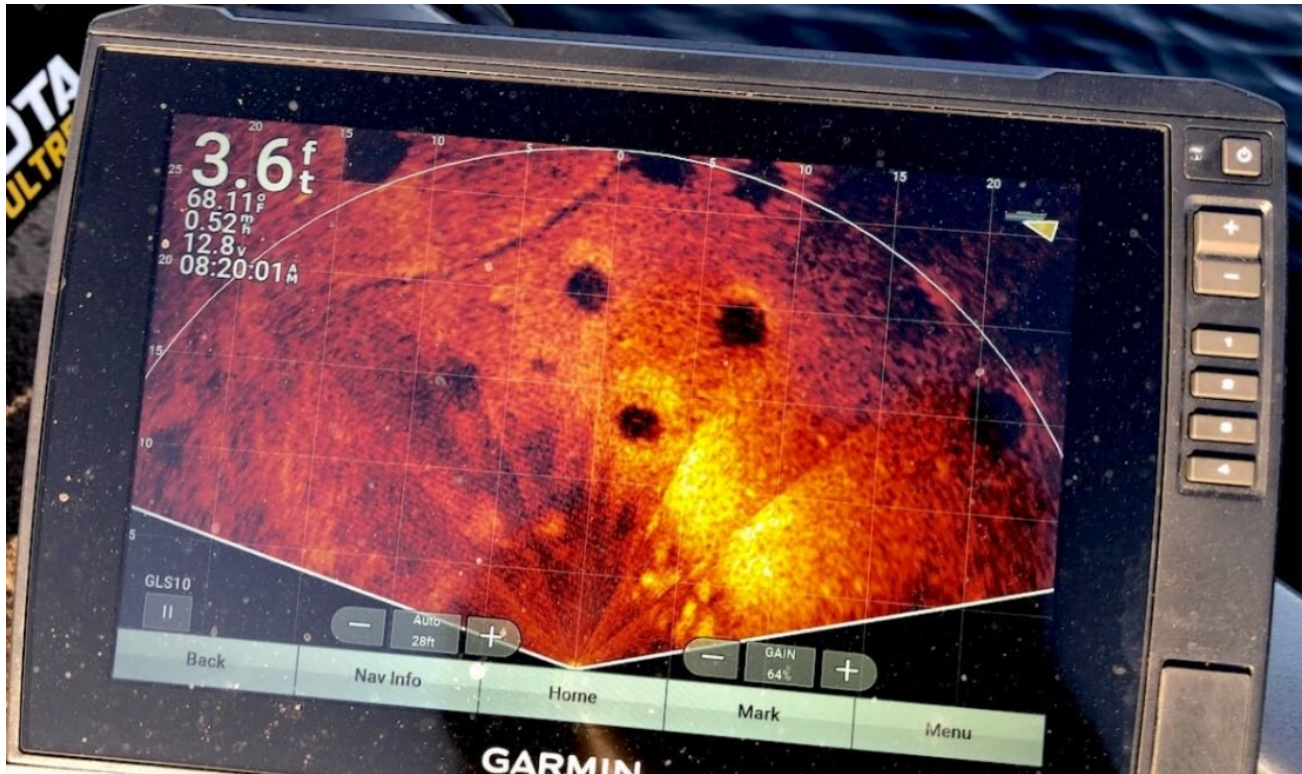
Side Scan Sonar nest detection

- Cameron Bodine, former NAU graduate student



Side Scan Sonar nest detection

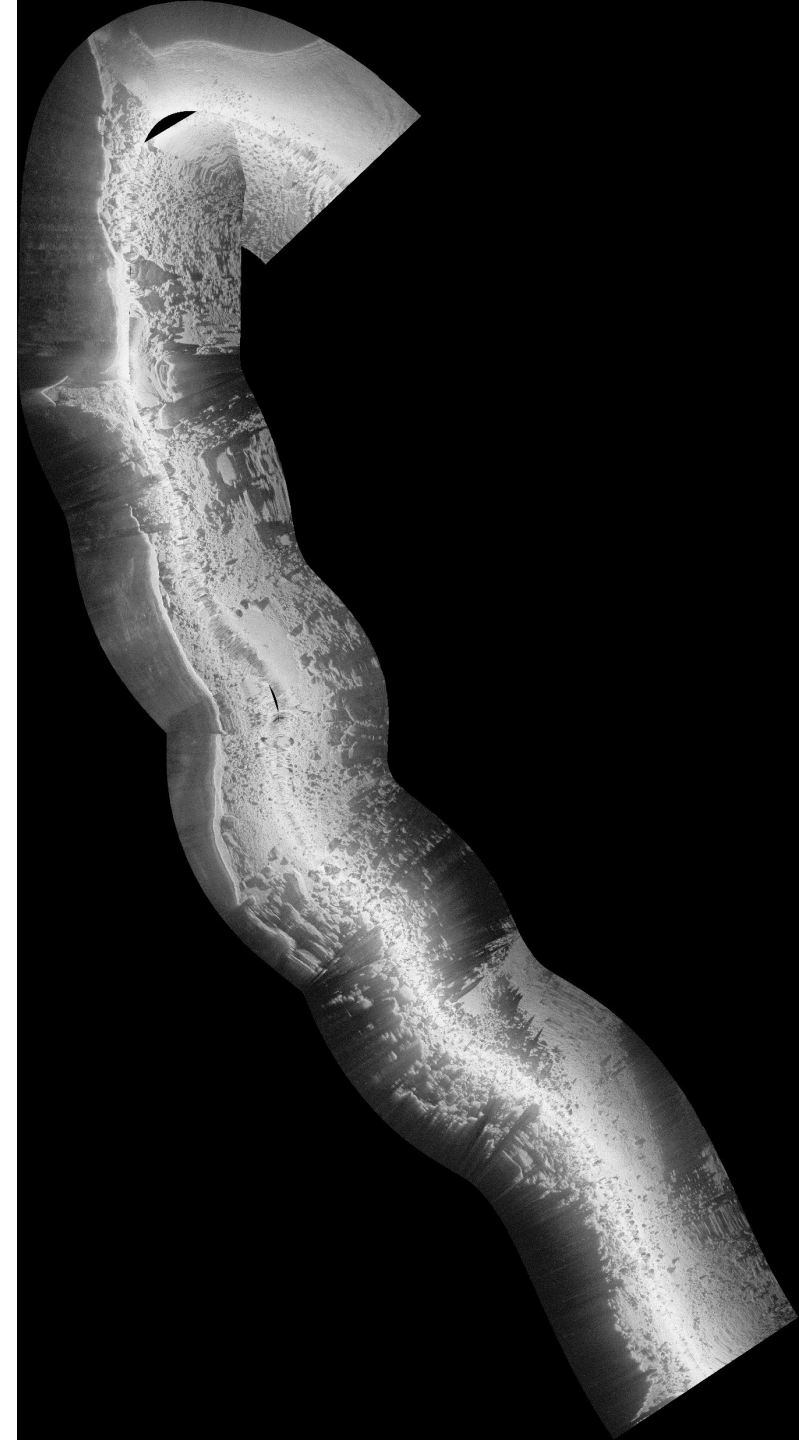
- Cameron Bodine, former NAU graduate student



Side Scan Sonar nest detection

- Surveyed Lees Ferry at the end of May
- Comprehensive mapping survey

- Date/time
- GPS coordinates
- Estimated water velocity
- Hydrologic features
 - Riffle, run, rapid, eddy, backwater, etc
- Water depth
- Nest size
- Substrate type in nest
- Notable nest features
- Adult SMB on or near nest?
- Eggs/larvae in nest?
- Other fishes in proximity to nest?
- Substrate type around nest
- Notable shoreline features

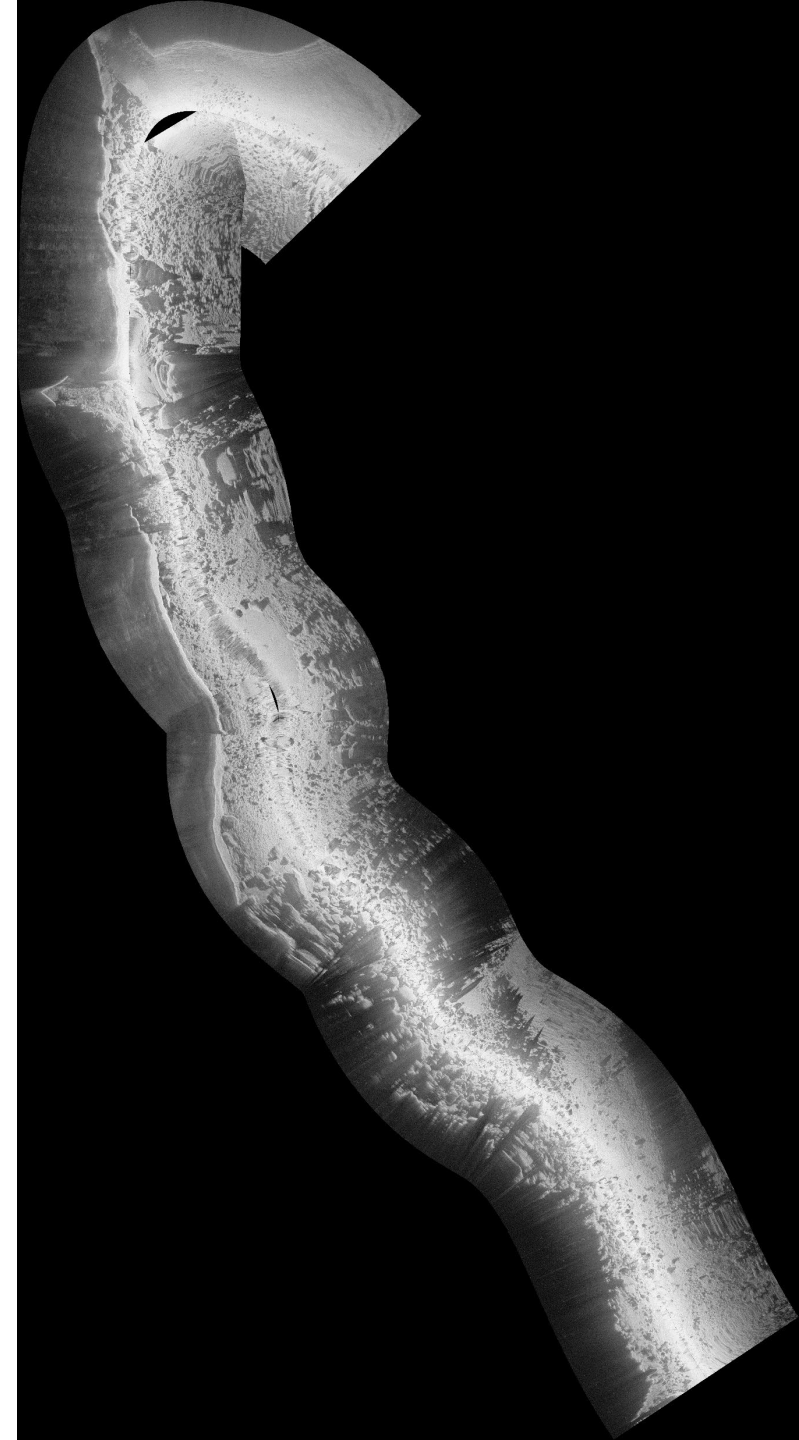


Side Scan Sonar nest detection

- Surveyed Lees Ferry at the end of May
- Comprehensive mapping survey

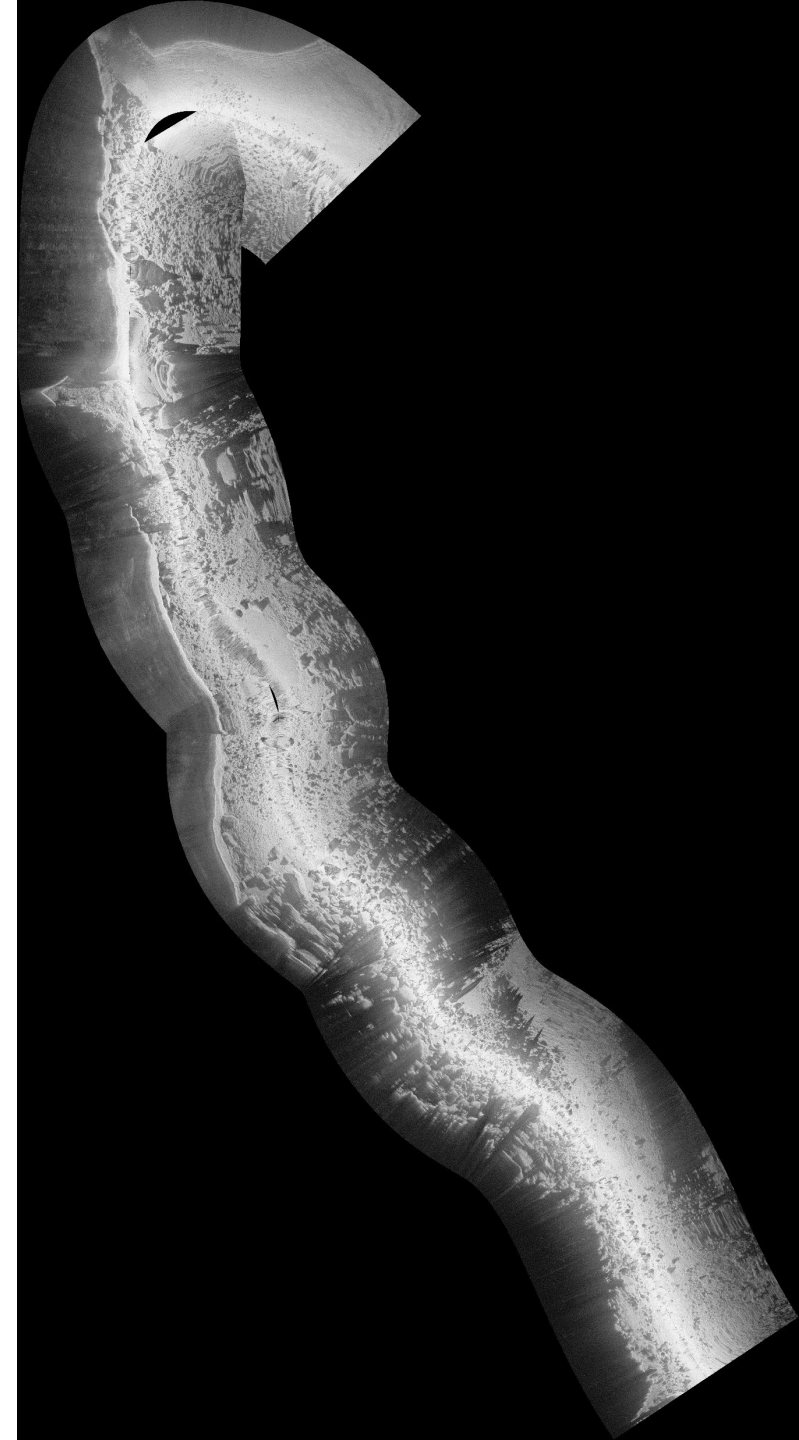
- Date/time
- GPS coordinates
- Estimated water velocity
- Hydrologic features
 - Riffle, run, rapid, eddy, backwater, etc
- Water depth
- Nest size
- Substrate type in nest
- Notable nest features
- Adult SMB on or near nest?
- Eggs/larvae in nest?
- Other fishes in proximity to nest?
- Substrate type around nest
- Notable shoreline features

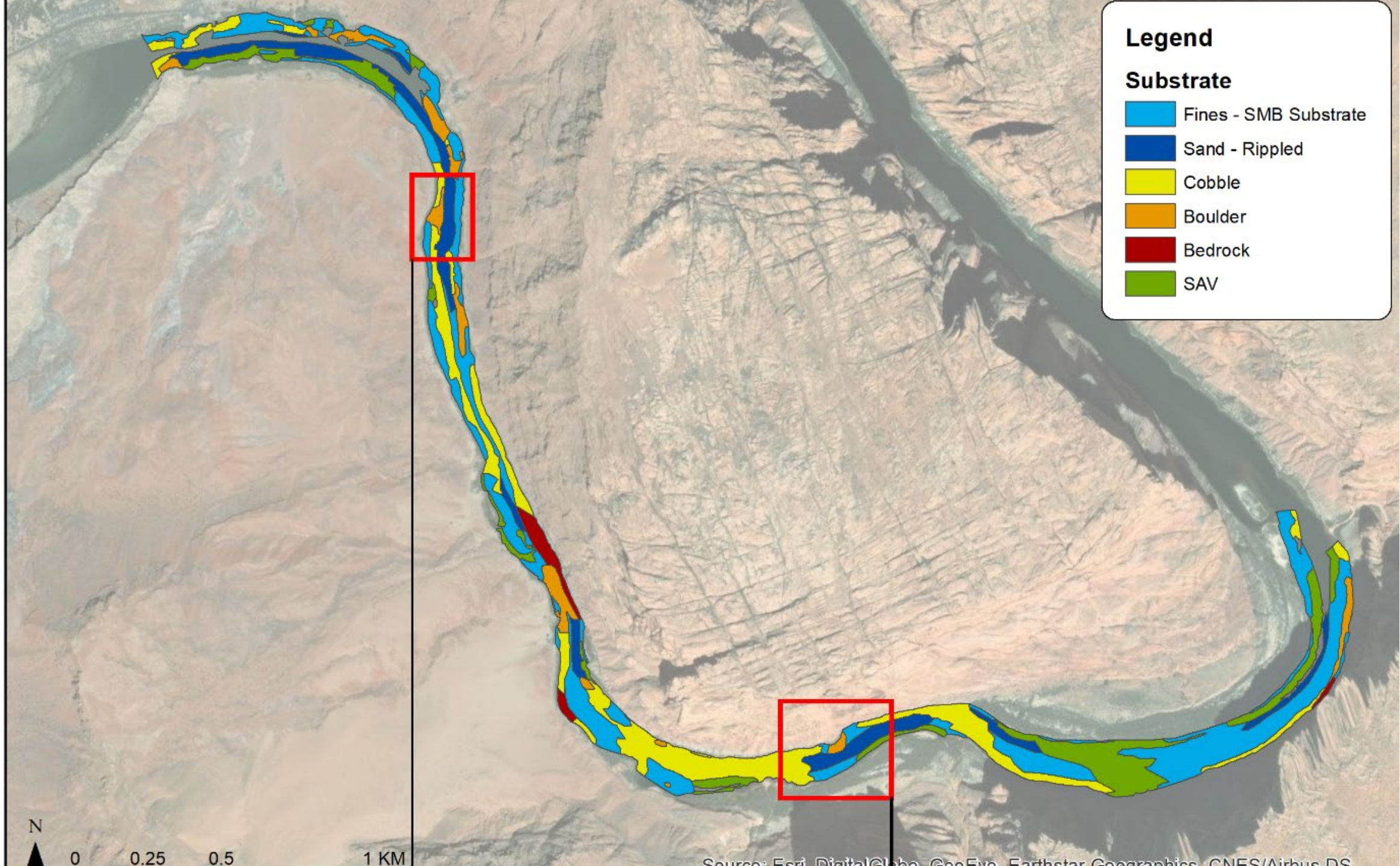
Water temp
11-12°C



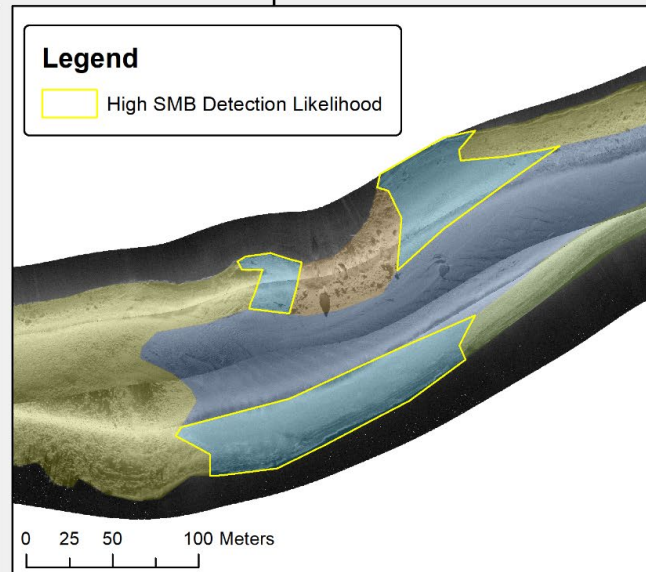
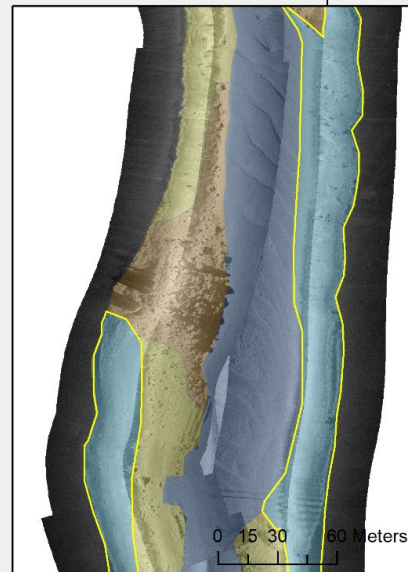
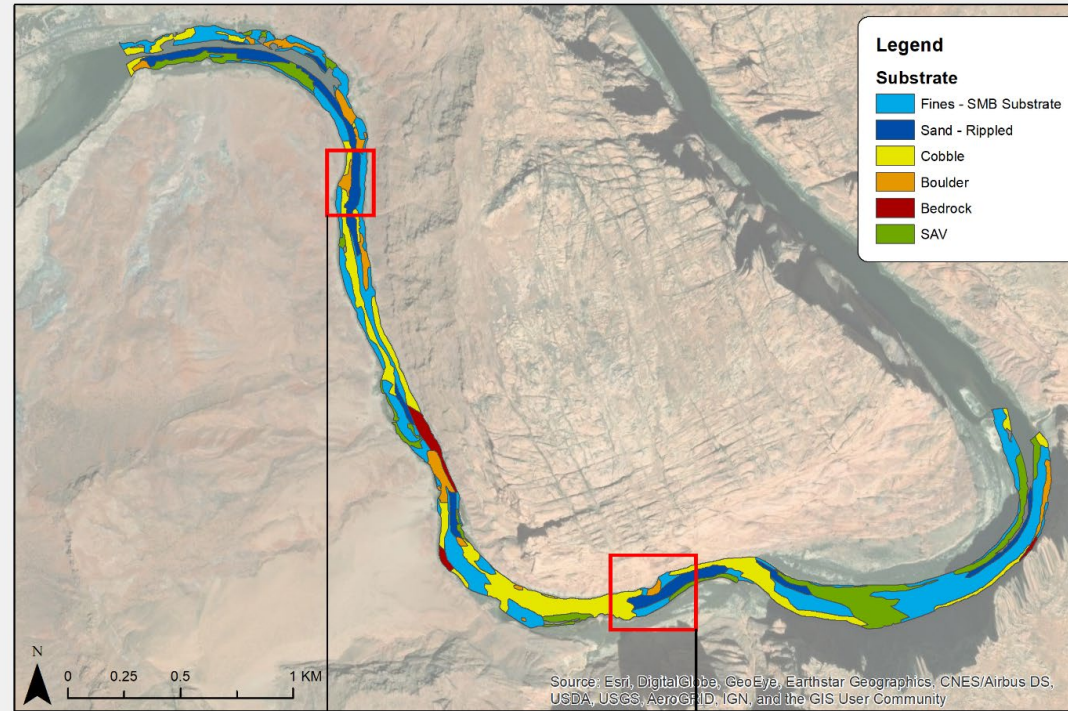
Side Scan Sonar nest detection

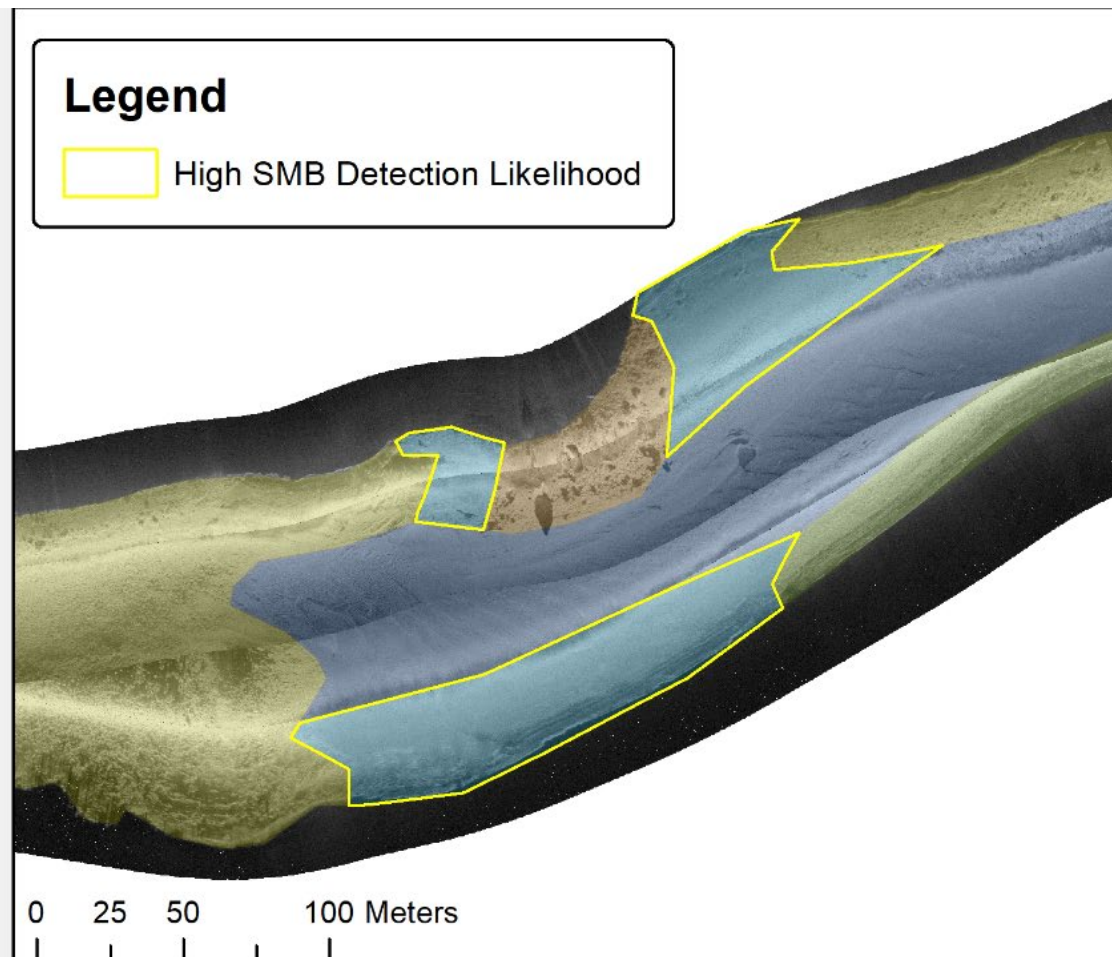
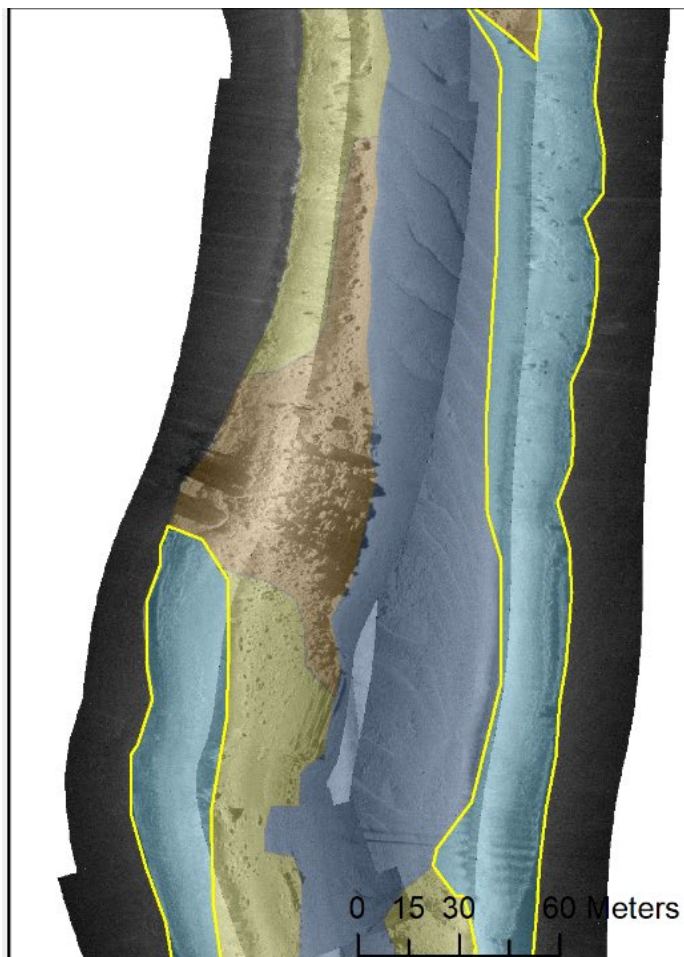
- No bass nests detected
- Reach-wide substrate mapping
- Identified appropriate spawning substrate and locations
- Identified two areas to focus future scanning
- NPS and Reclamation purchased new sonar systems





Glen Canyon - SMB





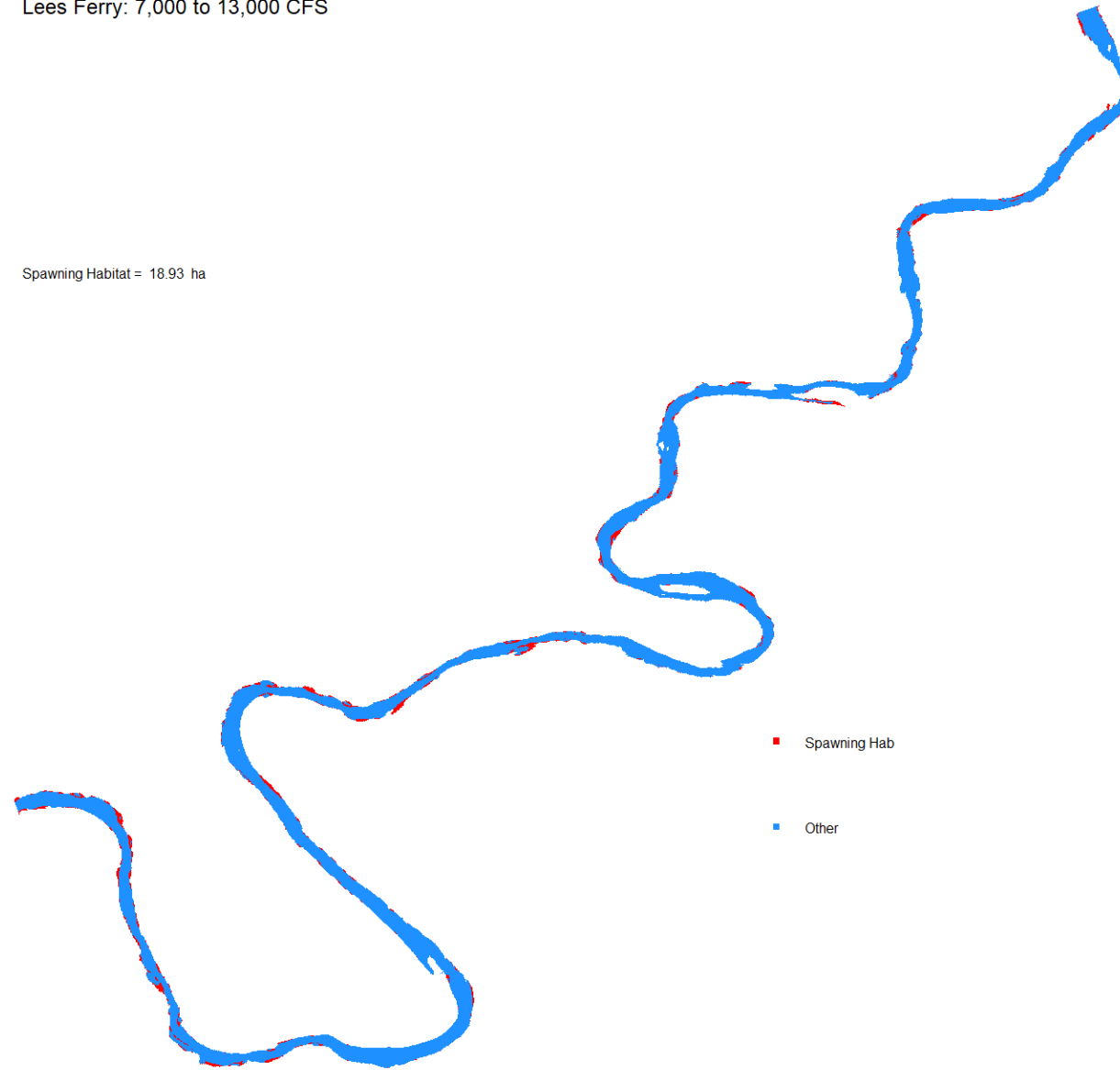
Second nest detection trip August 6-8

- Sonar scanning, visual scanning, seining backwaters, snorkeling
- Focused on low-velocity hot spots and Cam's optimal sites



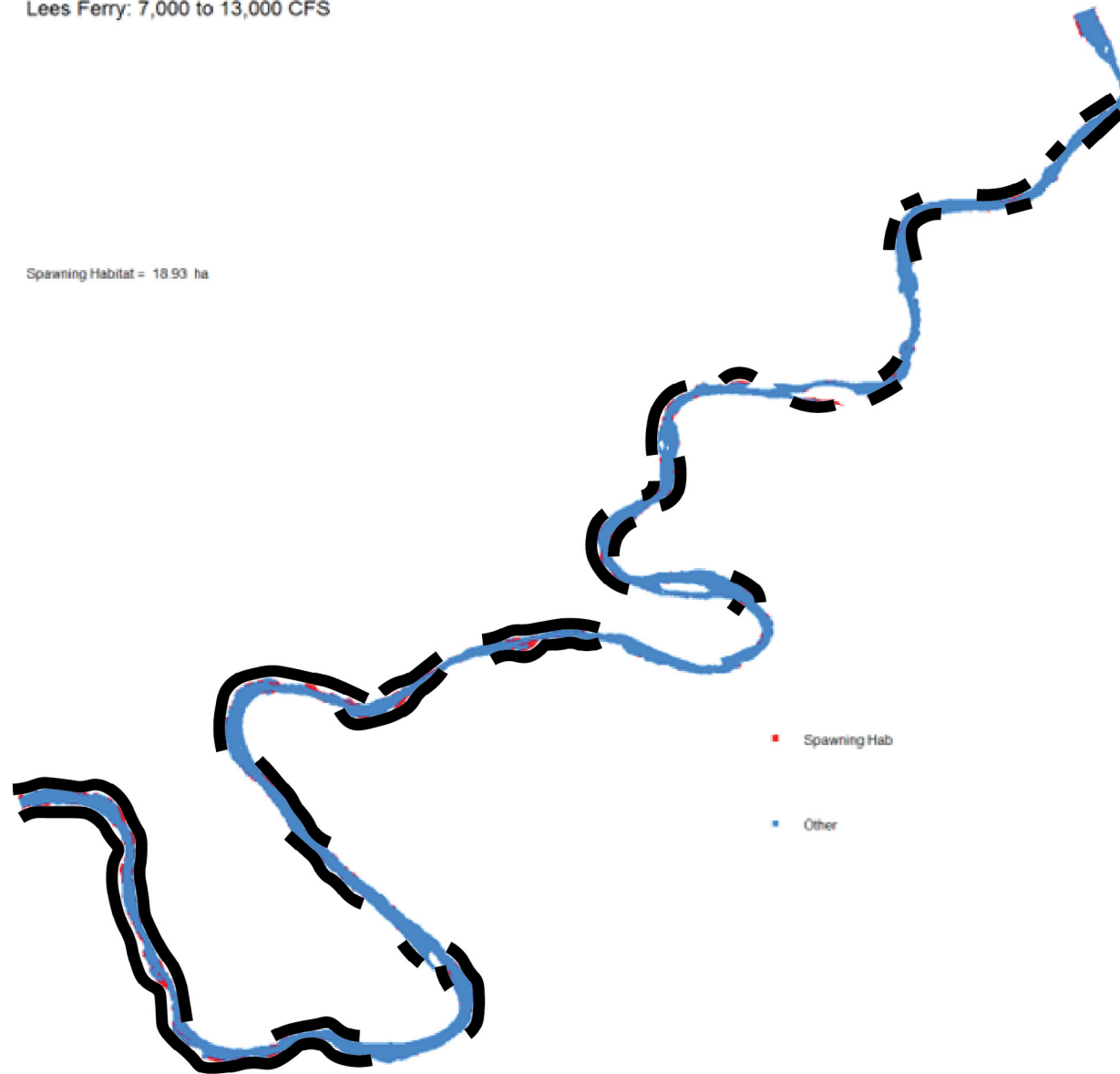
Lees Ferry: 7,000 to 13,000 CFS

Spawning Habitat = 18.93 ha



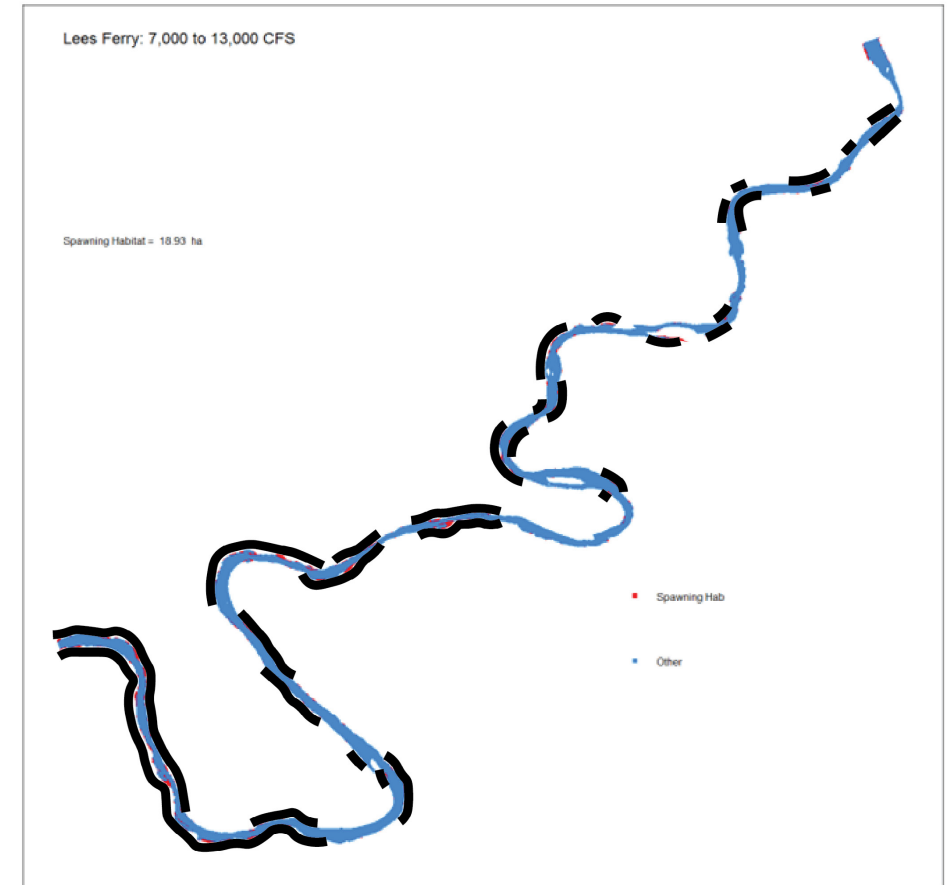
Lees Ferry: 7,000 to 13,000 CFS

Spawning Habitat = 18.93 ha

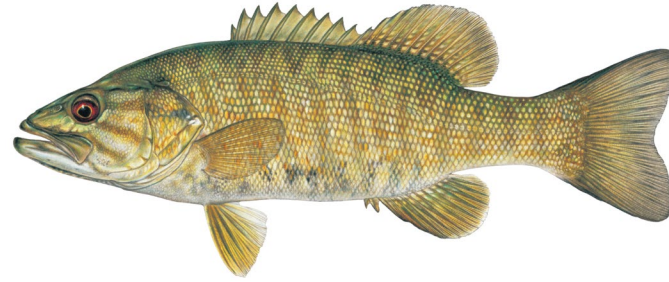


Second nest detection trip August 6-8

- Water temperatures averaging 13.5C
- No bass detected by any method
- No bass nests detected by any method
- Low velocity spots frequently overgrown with algae



2024 Bass Nest Monitoring



Artificial nests



Sonar detection of
nests

