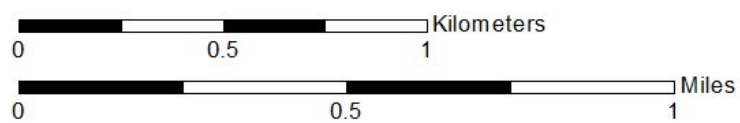


Hydroacoustic Fish Distribution

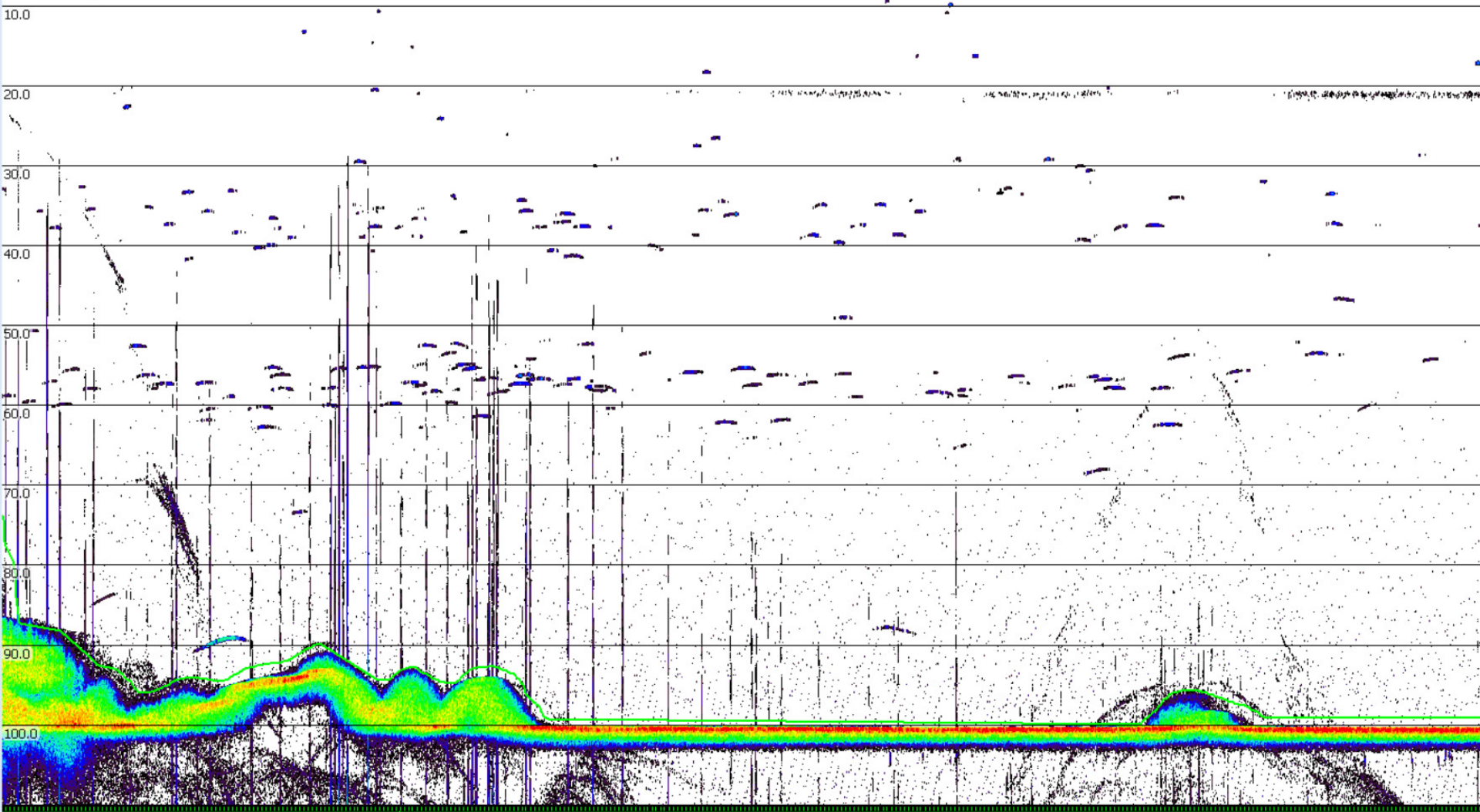
Michael Horn, USBR, Denver



— BUREAU OF —
RECLAMATION



[1:1] 199 kHz Fileset 1: TS split beam pings (channel 1)



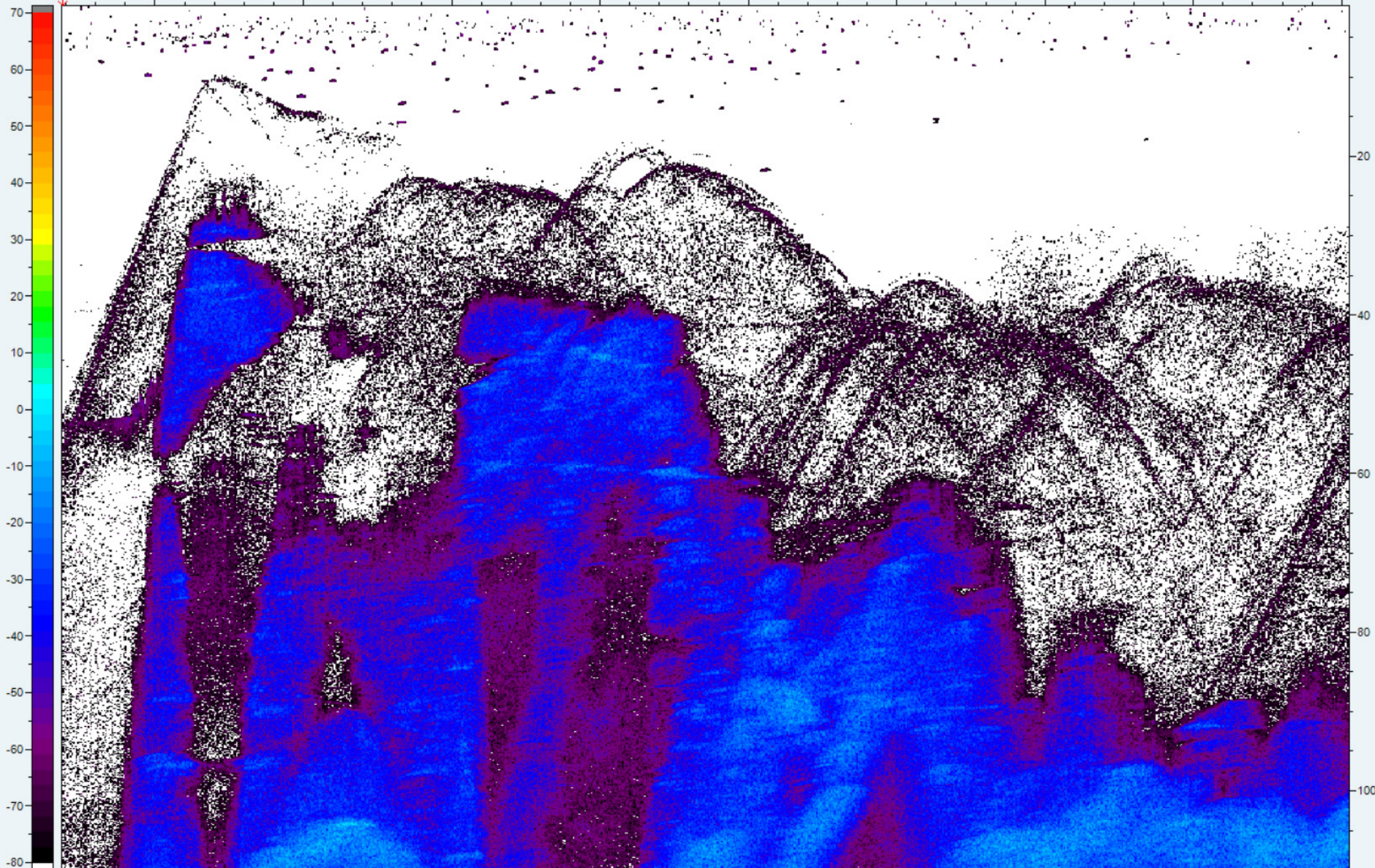


Pin Number

EL Echogram

Amplitude (db)

3800 3900 4000 4100 4200 4300 4400 4500 4600

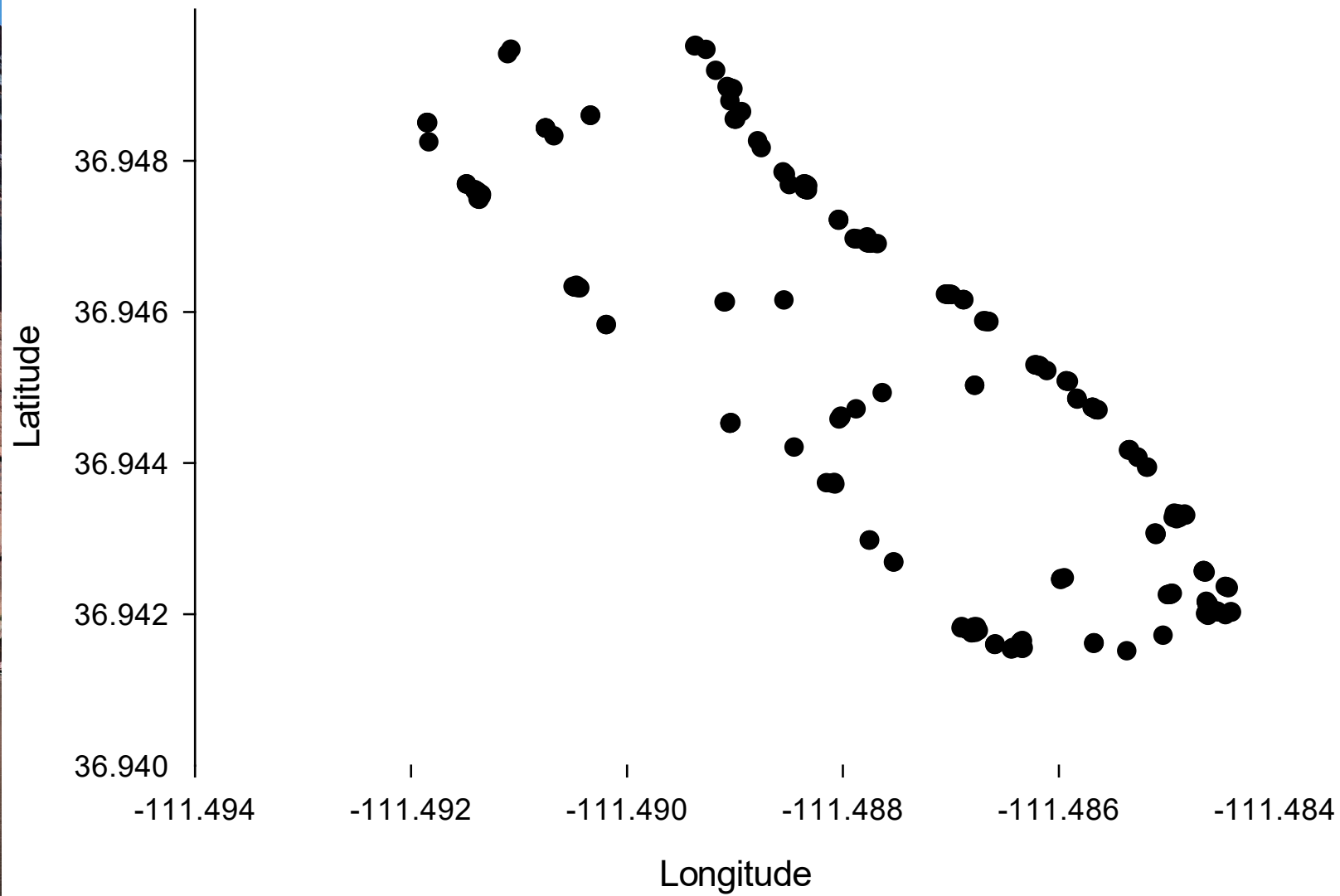


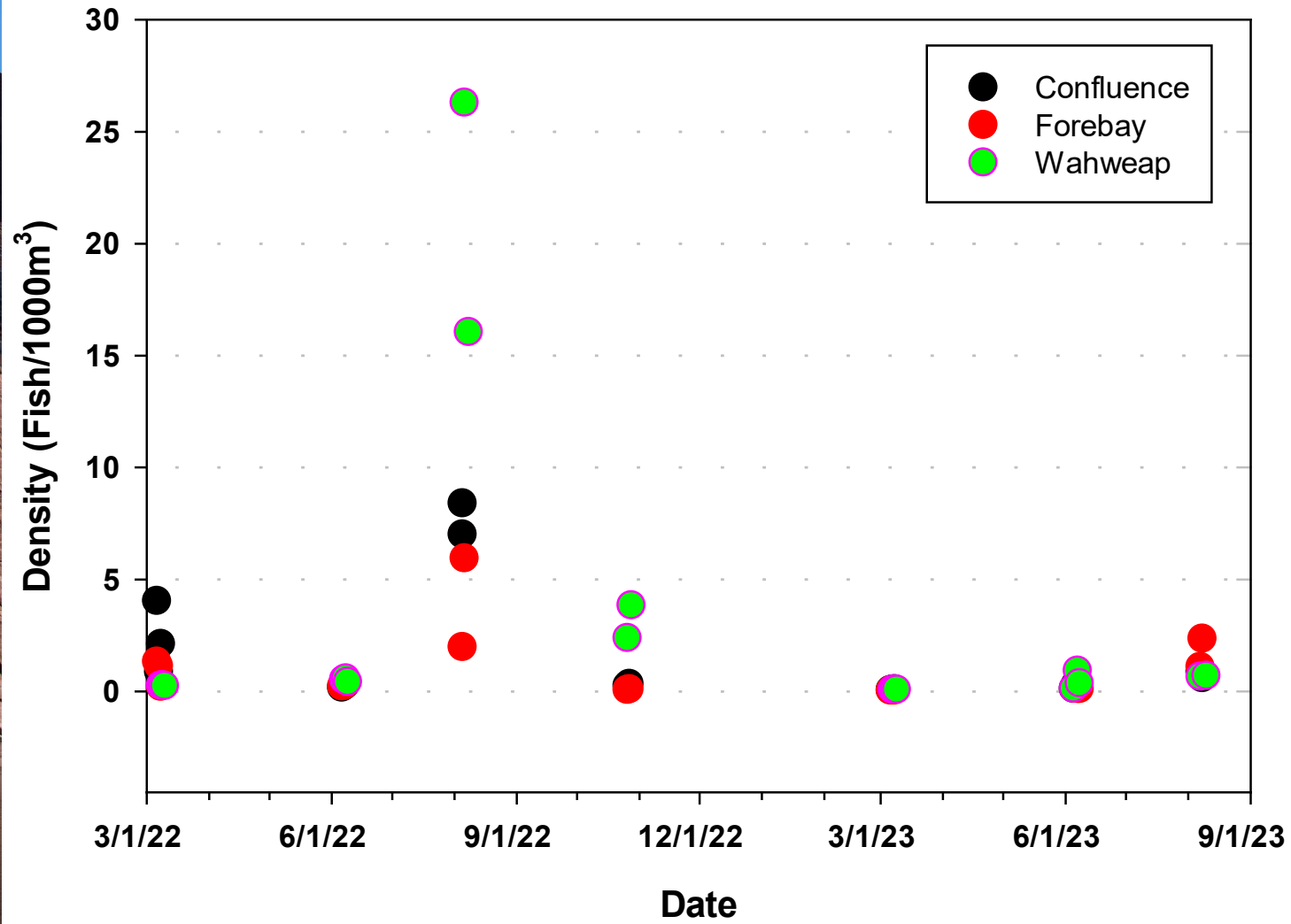
Forebay Fish Distribution March 2022

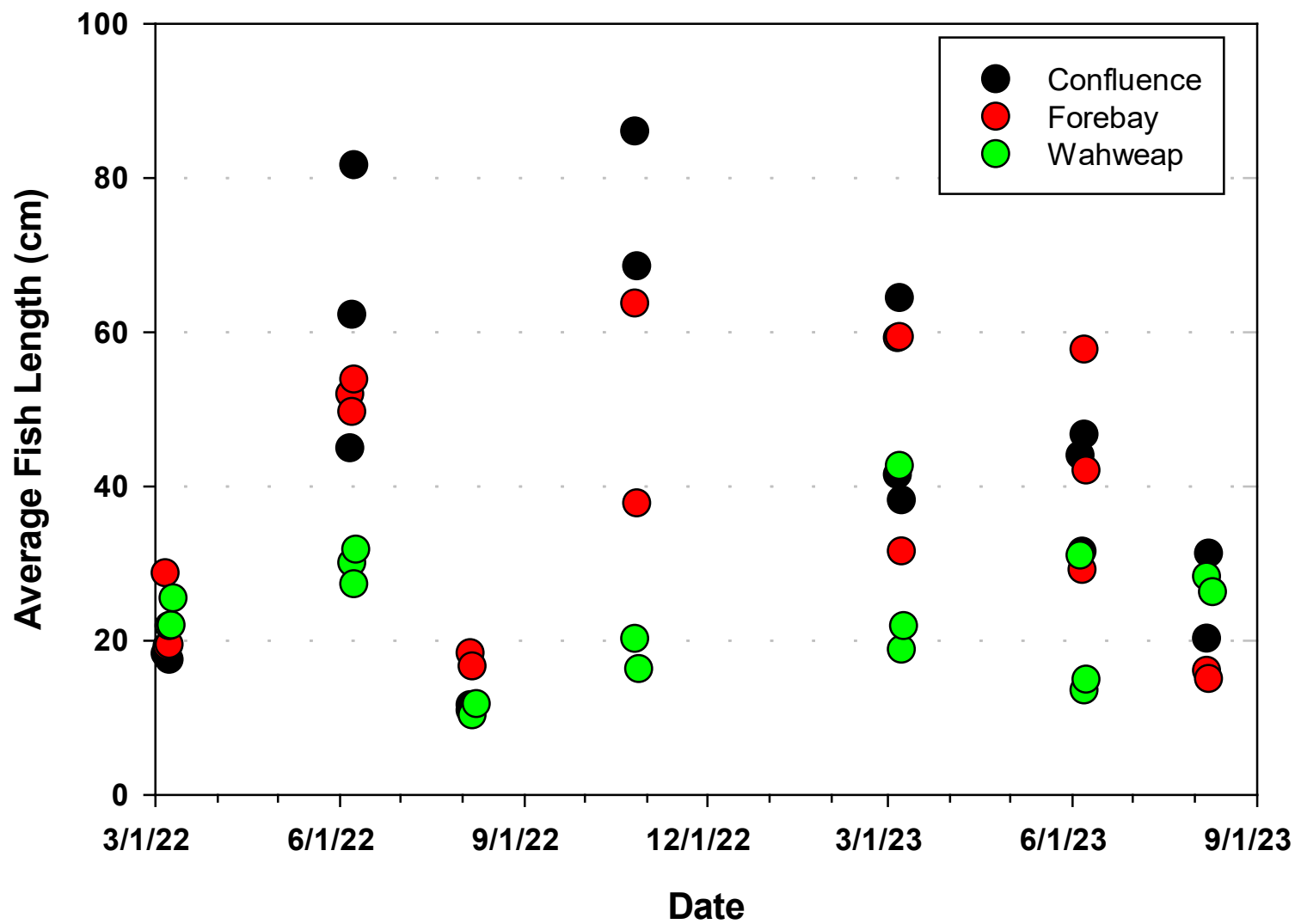
Latitude

Longitude

Latitude







Conclusions

1. Year to year variation is high.
2. Most of the year majority of fish are associated with canyon wall.
3. Fish tend to remain above thermocline in well oxygenated water. Only observed deeper under certain conditions.
4. At higher water levels, relatively low risk of entrainment



— BUREAU OF —
RECLAMATION