



— BUREAU OF —
RECLAMATION

Glen Canyon Dam Adaptive Management Program

Bureau of Reclamation

July 7, 2021

Lee Grayson



HFE Protocol for Fall 2023

1. Planning and Budgeting
 - Annual resource status assessment
 - Annual Agency Reporting
 - GCDAMP Budget and Work Plan Process
2. Modeling
3. Decision and Implementation Component
 - Review modeling
 - Review status of resources
 - Consultation with agencies and tribes
 - TWG / AMWG input - webinar
 - GCD Leadership Team recommendation
 - DOI Decision – Secretary’s Designee



Map Area

ARIZONA

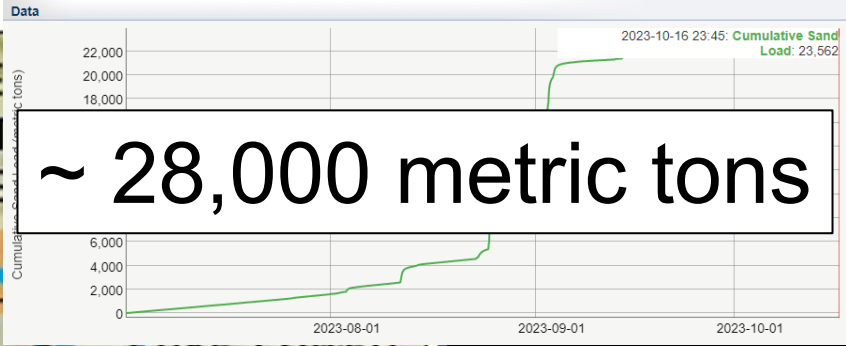
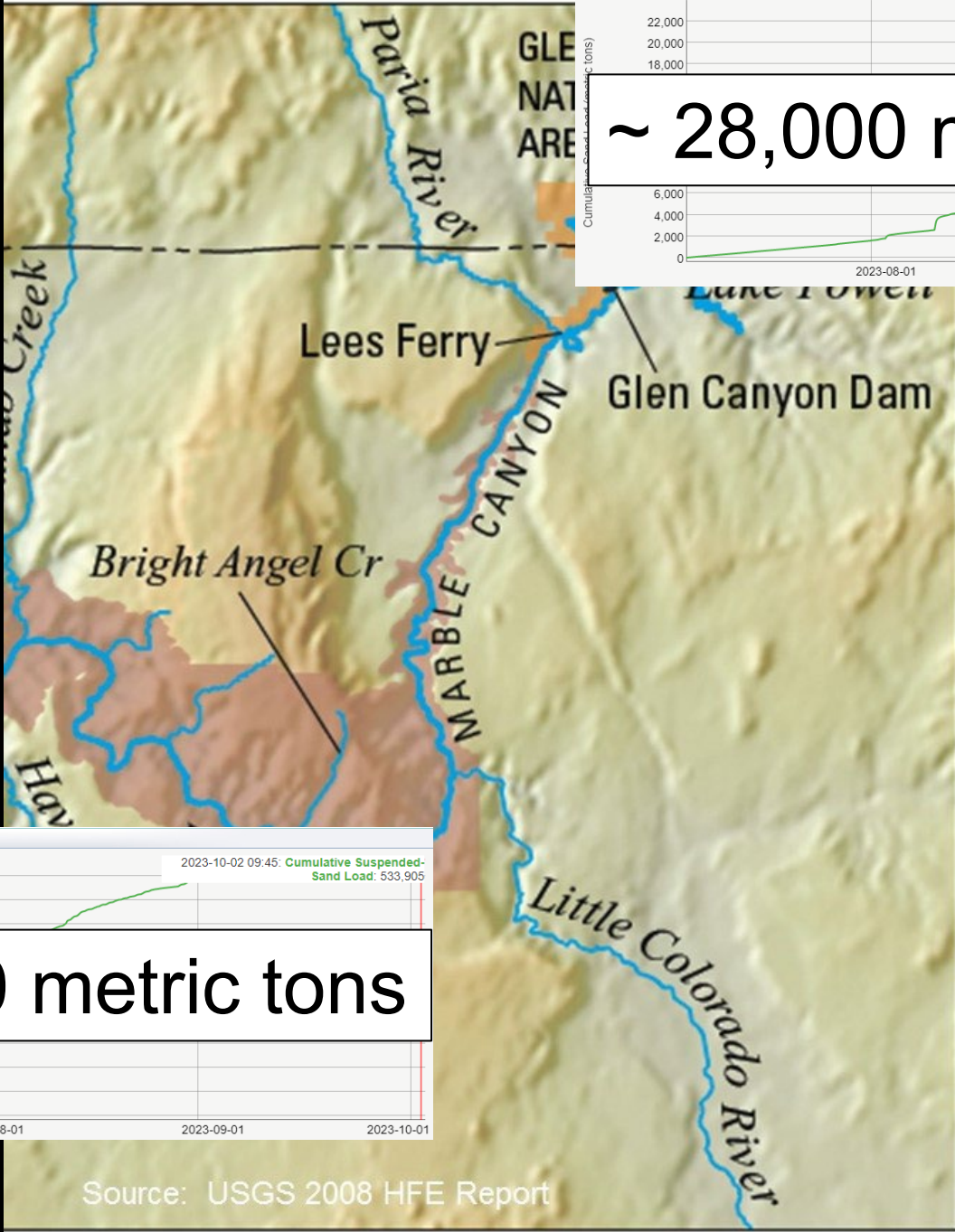


Source: USGS 2008 HFE Report

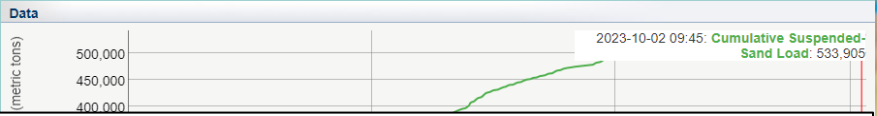




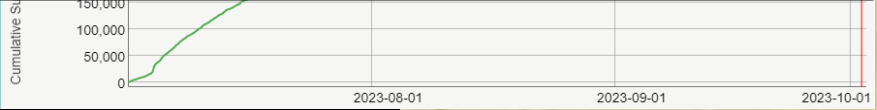
Source: USGS 2008 HFE Report



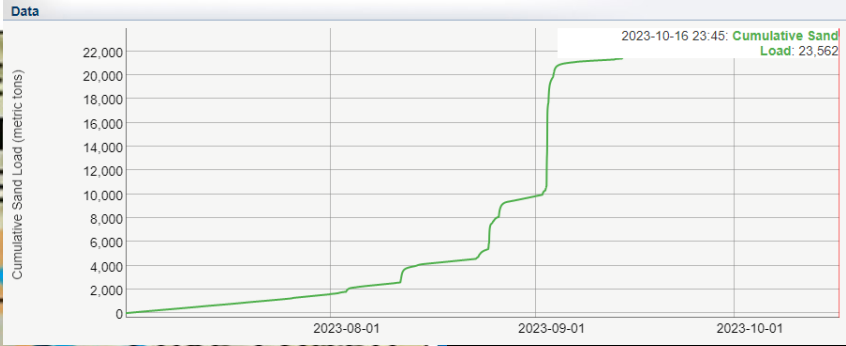
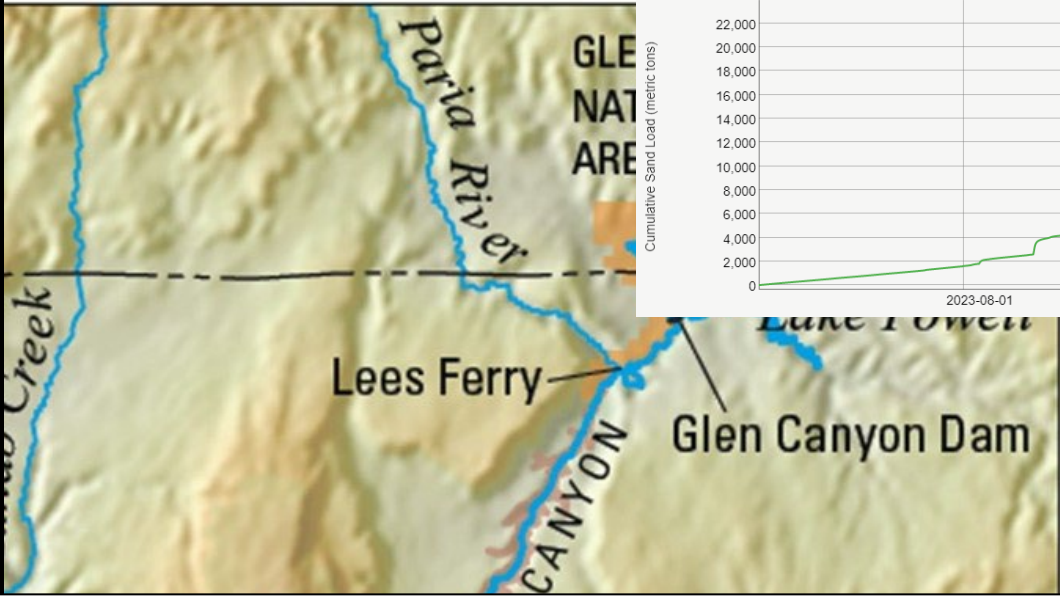
~ 28,000 metric tons



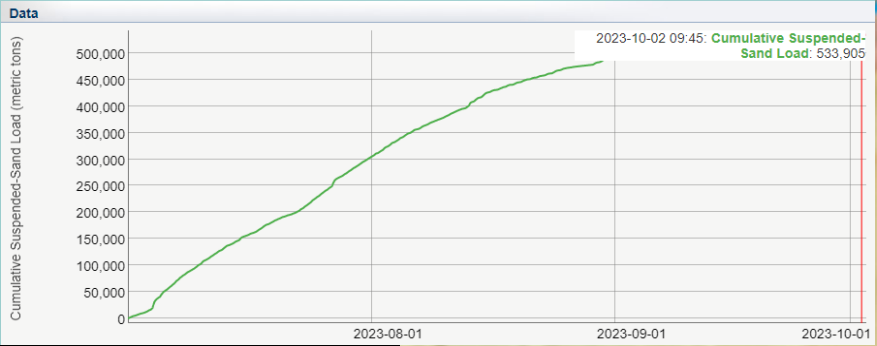
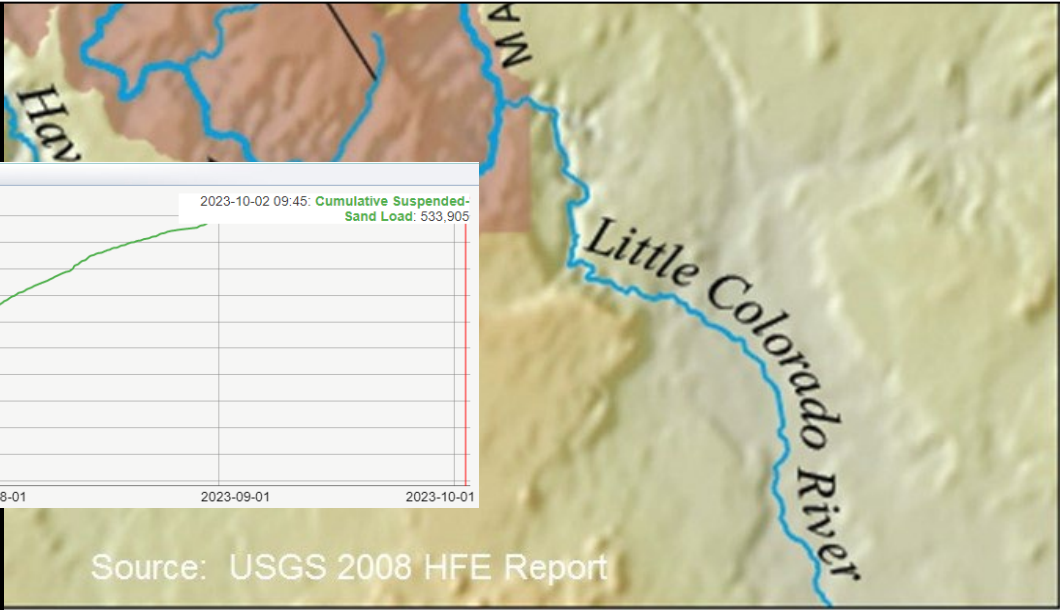
~ 560,000 metric tons



Source: USGS 2008 HFE Report



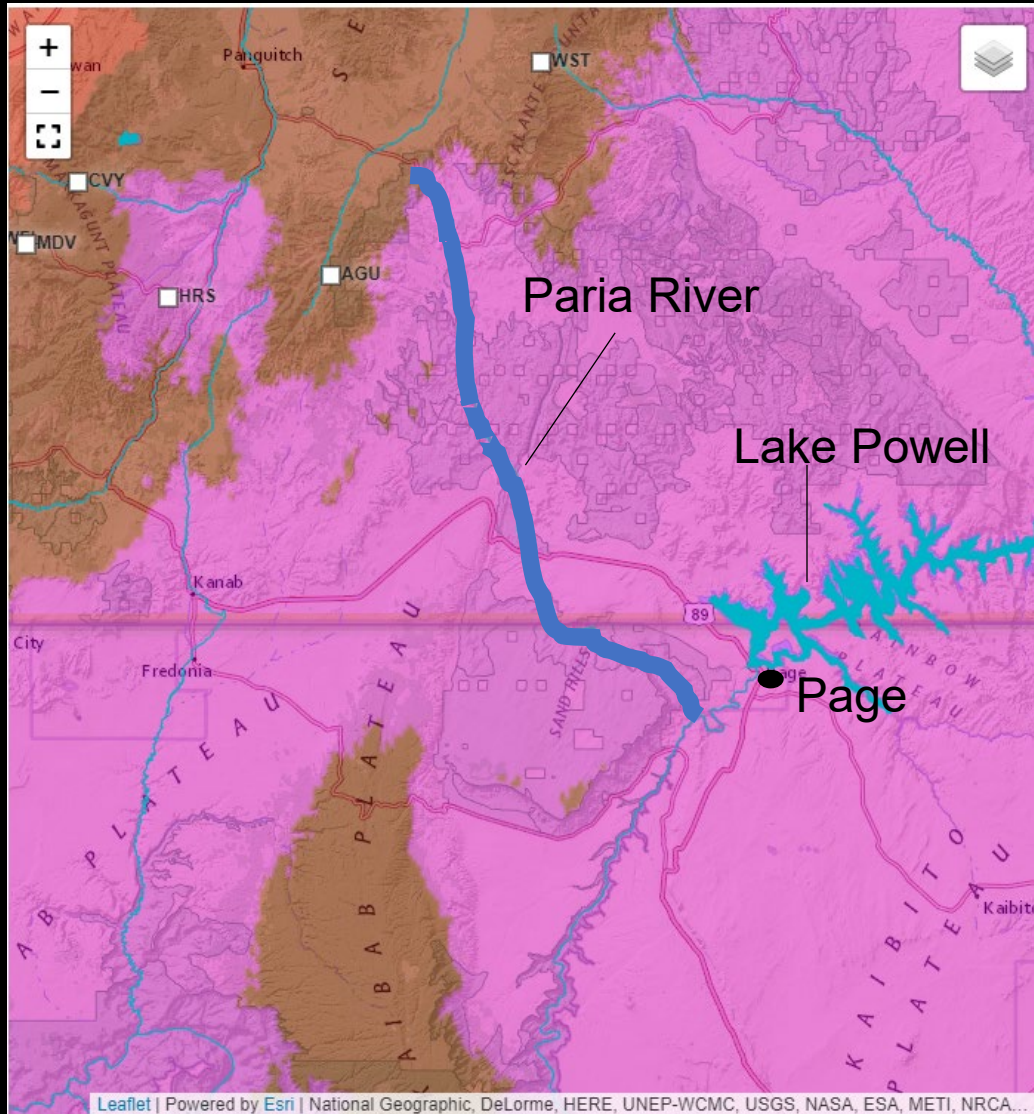
- 530,000 ± 30,000



Source: USGS 2008 HFE Report



Long-Term Forecast



Monthly Precipitation

Show

Significant Areas Only



Previous

Next

October - September 2023 (Water Year)

September 2023 (Monthly)

October 1 - 25 2023 12z (Month to Date)

% Average

- >500%
- 300-500%
- 200-300%
- 150-200%
- 130-150%
- 110-130%
- 100-110%
- 90-100%
- 70-90%
- 50-70%
- 30-50%
- 0-30%



HFE Protocol for Fall 2023

1. Planning and Budgeting

- Annual resource status assessment
- Annual Agency Reporting
- GCDAM

2. Modeling

3. Decision and

- Review modeling
- Review status of resources
- Consultation with agencies and tribes
- TWG / AMWG input - webinar
- GCD Leadership Team recommendation
- DOI Decision – Secretary’s Designee

**No Trigger Met
No Fall HFE**

Possible Future Flows for FY 2024

GCD Experimental Flow

Spring HFE	Up to 96 hours	March – April
Proactive Spring HFE	24 hours	April – June
Trout Management Flows	up to 3 cycles/month for 4 months	May – August
Macroinvertebrate Flows	target 2-3 replicates	May – August
Smallmouth Bass Flows*	TBD	TBD
Fall HFE	upto 96 hours	October - November
Extended Duration Fall HFE	97- 192 or 97-250 hours	October - November

* Going through Environmental Impact Statement

Jeremy Hammen
Bureau of Reclamation
jhammen@usbr.gov



— BUREAU OF —
RECLAMATION