

Overview of 2020 GCMRC Annual Report External Review

- Part of the Science Advisor role enshrined in the GCDAMP framework.

f. The GCDAMP Science Advisors Program

The Science Advisors Program (SAP) will continue as part of GCDAMP to provide independent scientific review and recommendations regarding monitoring and research, integration, and management of natural, cultural, and recreational resources affected by Glen Canyon Dam operations. The SAP will be composed of qualified individuals not otherwise participating in the long-term monitoring and research studies. The SAP will establish review panels as directed by DOI and in consultation with GCDAMP, including the Tribes and AMWG to conduct periodic reviews. The SAP and review panels convened thereunder are advisory and not decision-making bodies.



GCDAMP Framework

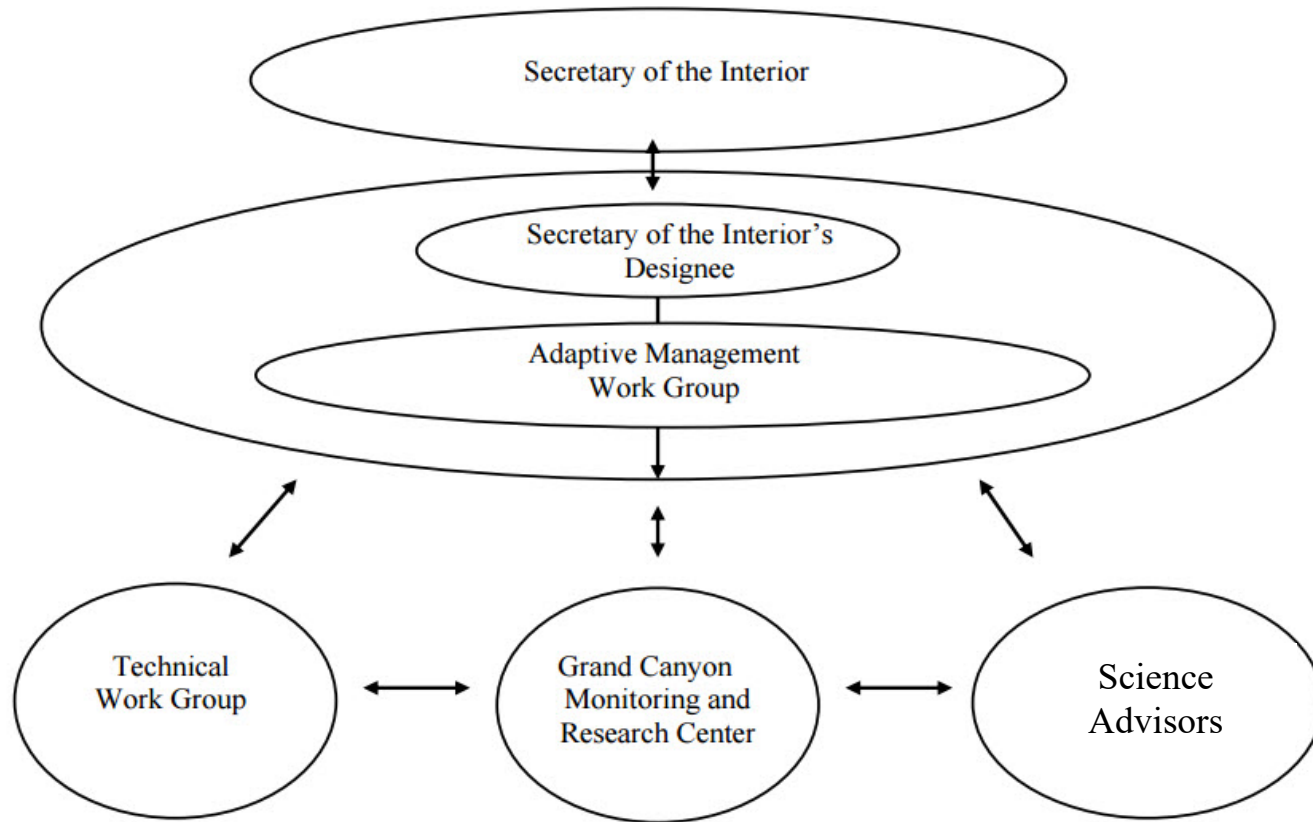


Figure 1. Organizational components of the Glen Canyon Dam Adaptive Management Program.

Overview of 2020 GCMRC Annual Report External Review

- First encounter with the GCDAMP for many reviewers:
 - Some missed context, need for clarity, and opportunity for back/forth is expected.
- Future work: improved timing of review to better inform workplans, BAHG processes, annual reports, etc.
- Dawn Johnson, PhD of Wood PLC works under a large USFWS/DOI contract for external peer review services
 - Performs this type of review regularly.

