



Lees Ferry Monitoring Update

Jan Boyer, David Rogowski, Ryan Mann
October 2021 TWG Meeting

Electrofishing

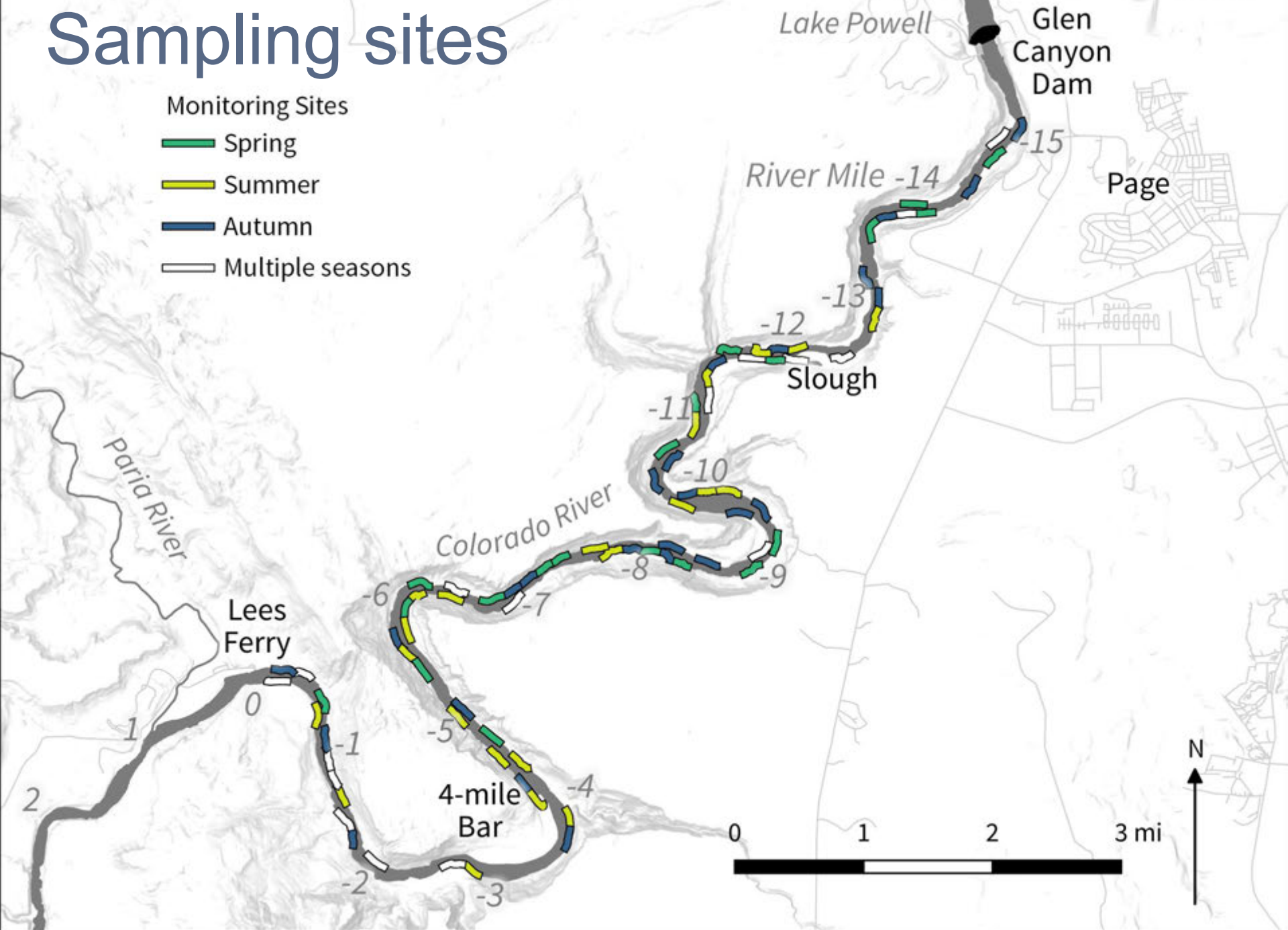
- 3-4 night March, July, September trips
- Monitoring – randomly selected 250m sites throughout Ferry
- Non-native detection – additional fishing at spillways, springs, slough



Sampling sites

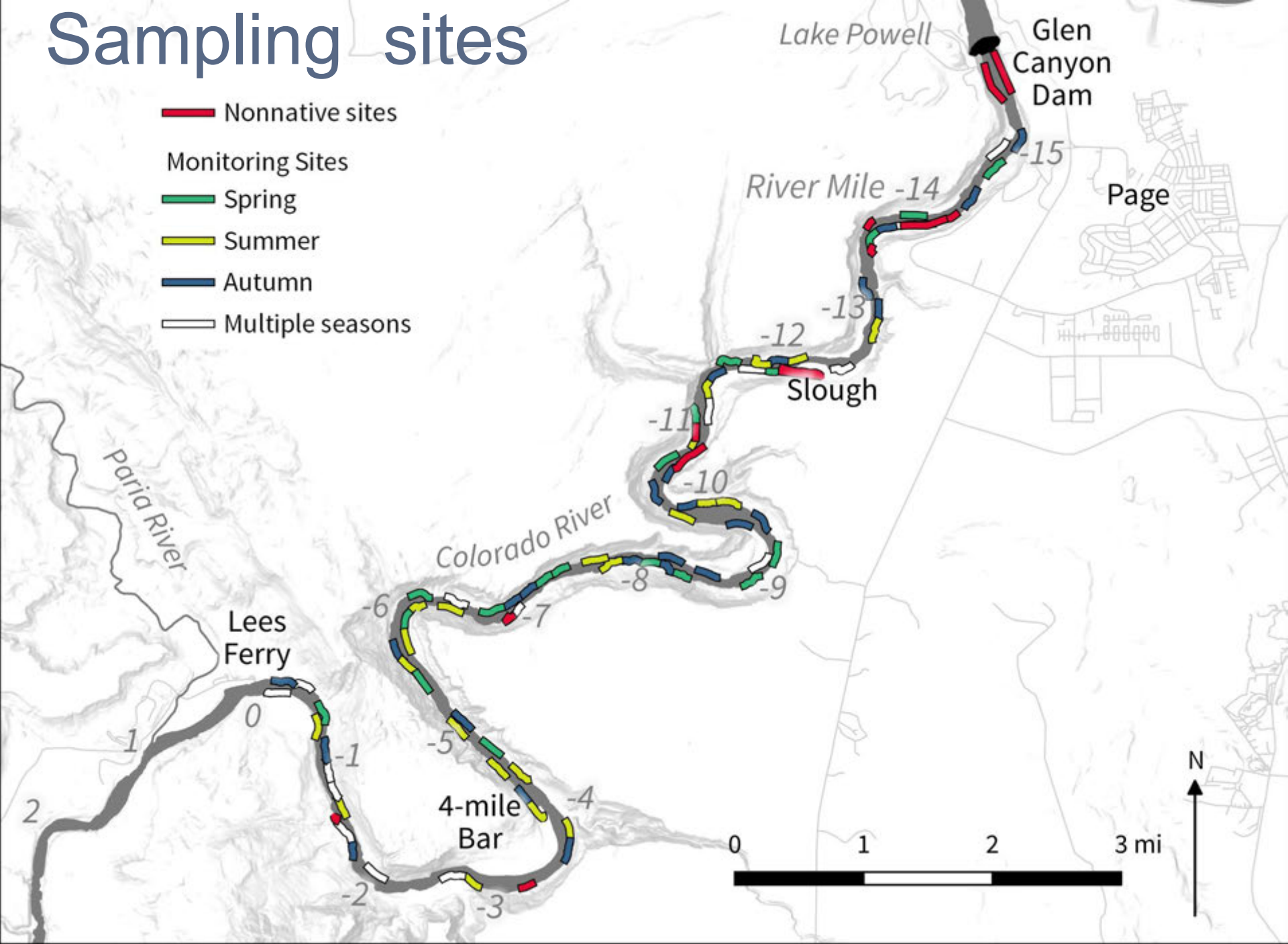
Monitoring Sites

- Spring
- Summer
- Autumn
- Multiple seasons



Sampling sites

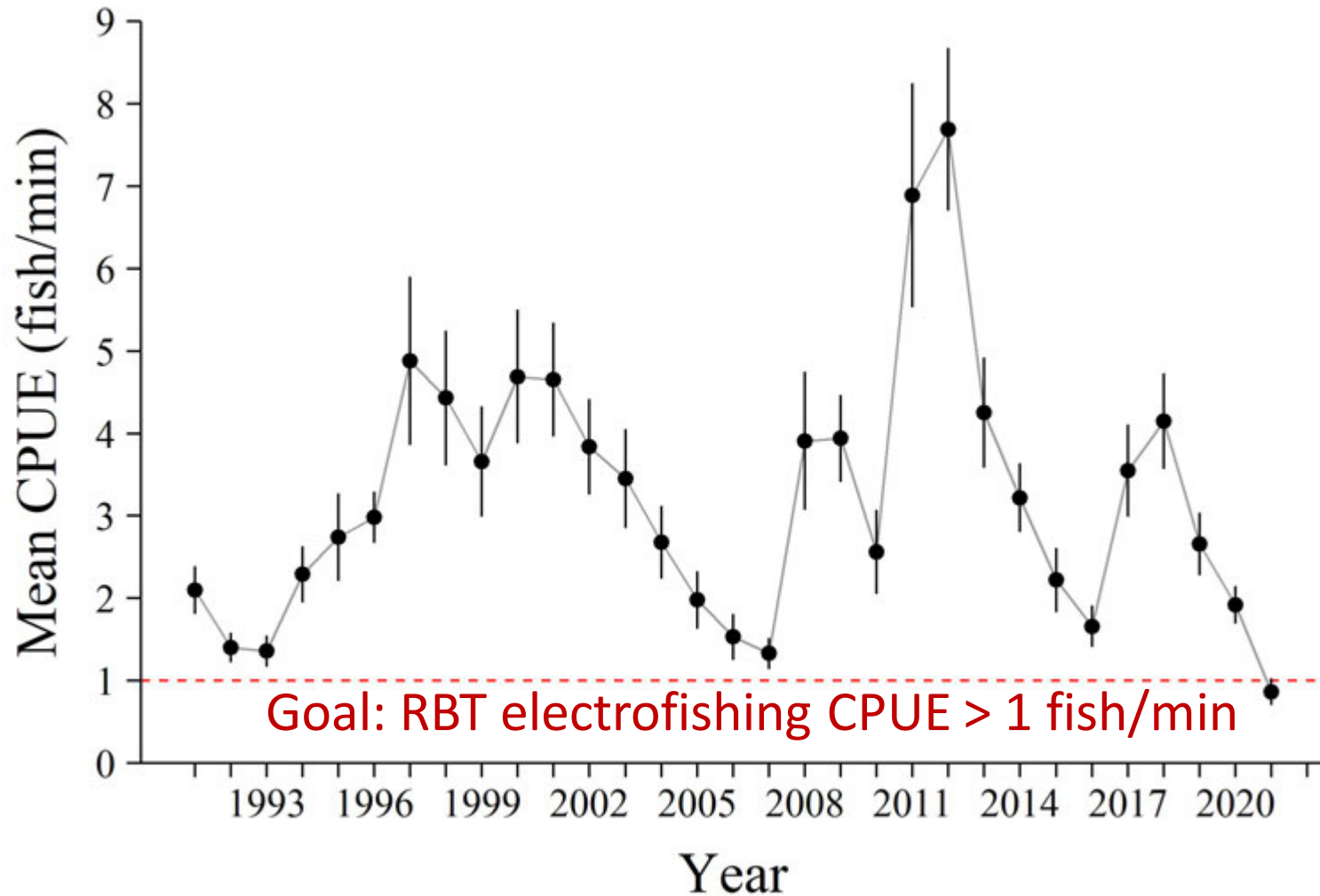
- Nonnative sites
- Monitoring Sites
- Spring
- Summer
- Autumn
- Multiple seasons



Catch: Fall 2021

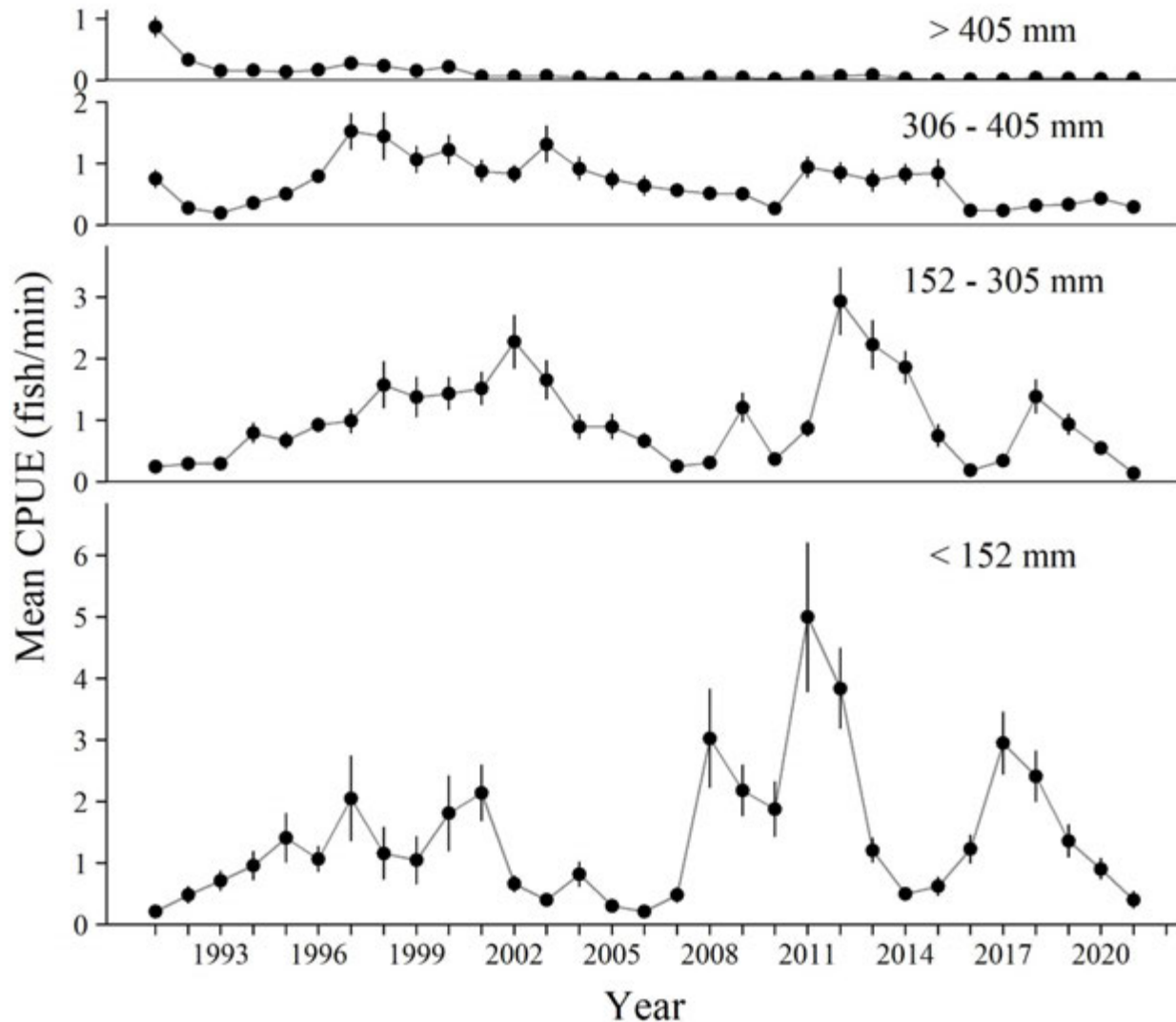
Species	CPUE (fish/min) [95% CI]	Count	% of Catch
Rainbow Trout	1.05 [0.67, 1.43]	360	70.5%
Brown Trout	0.37 [0.23, 0.52]	135	26.4%
Flannemouth Sucker	NA	15	2.9%
Common Carp	NA	1	0.1%

Rainbow Trout CPUE

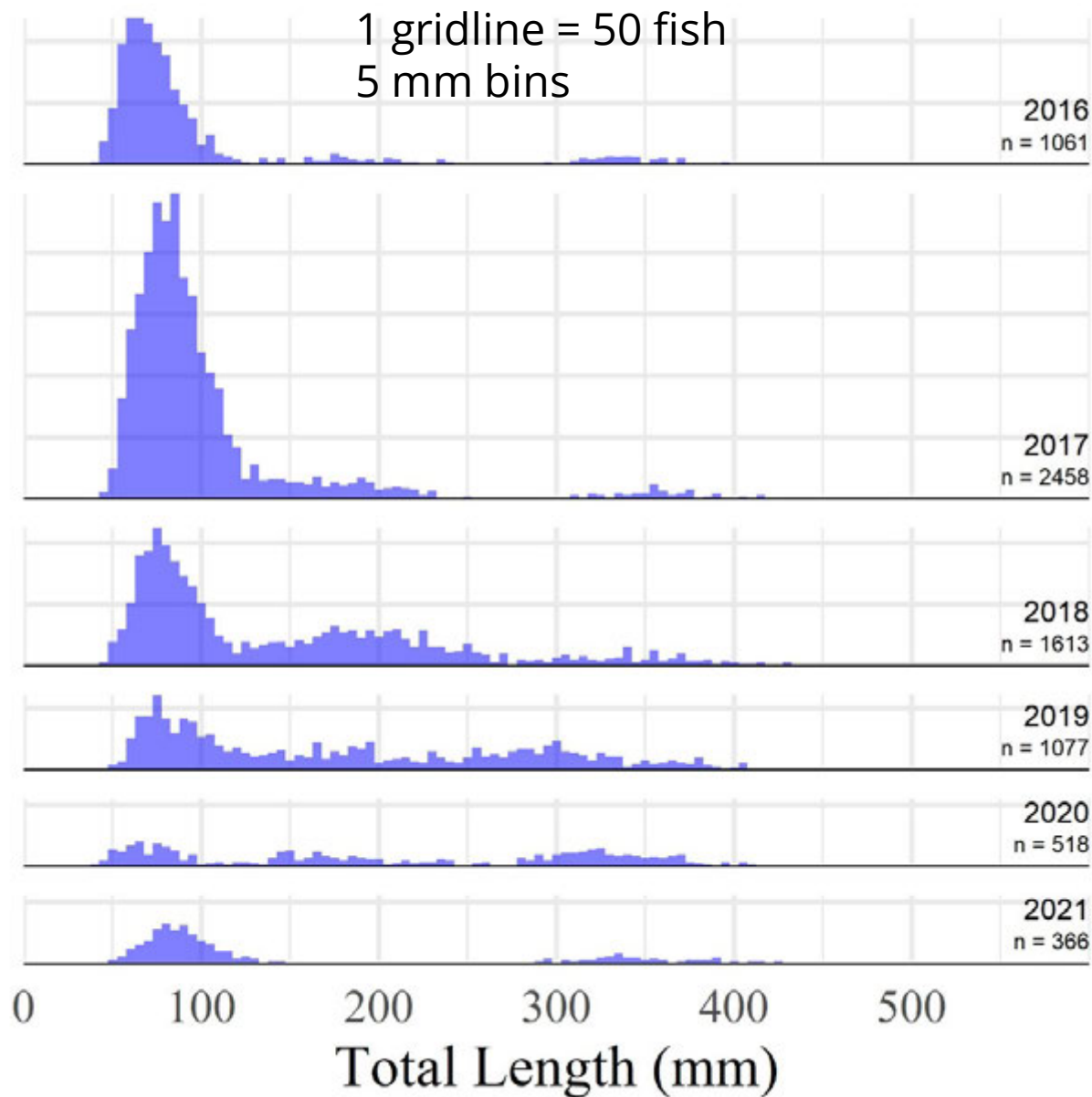


Goal: RBT electrofishing CPUE > 1 fish/min

Rainbow Trout CPUE by size



Rainbow Trout Lengths -Fall



Brown Trout



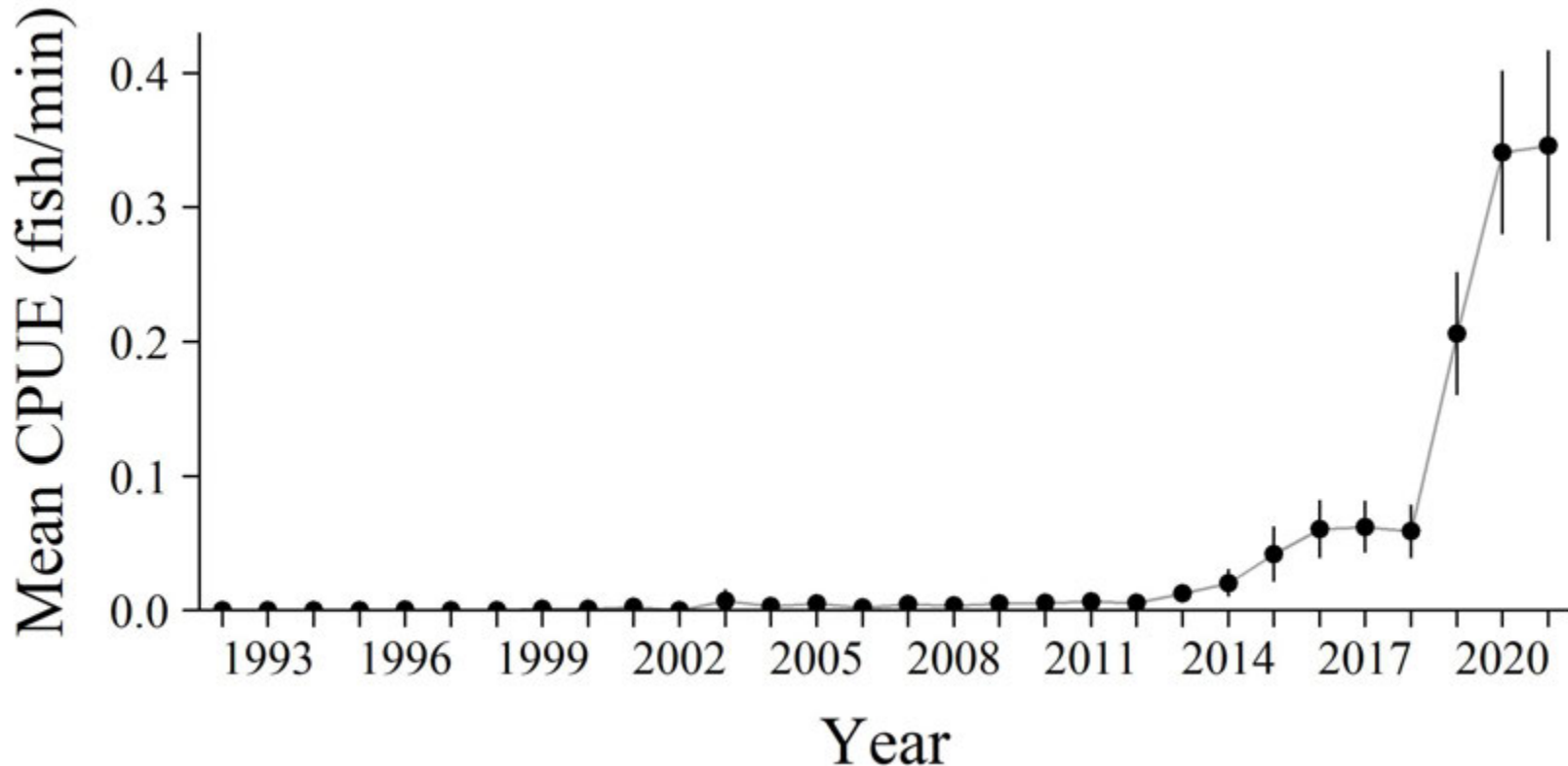
Brown Trout CPUE

Fall: 135 captured, 13 recaptures

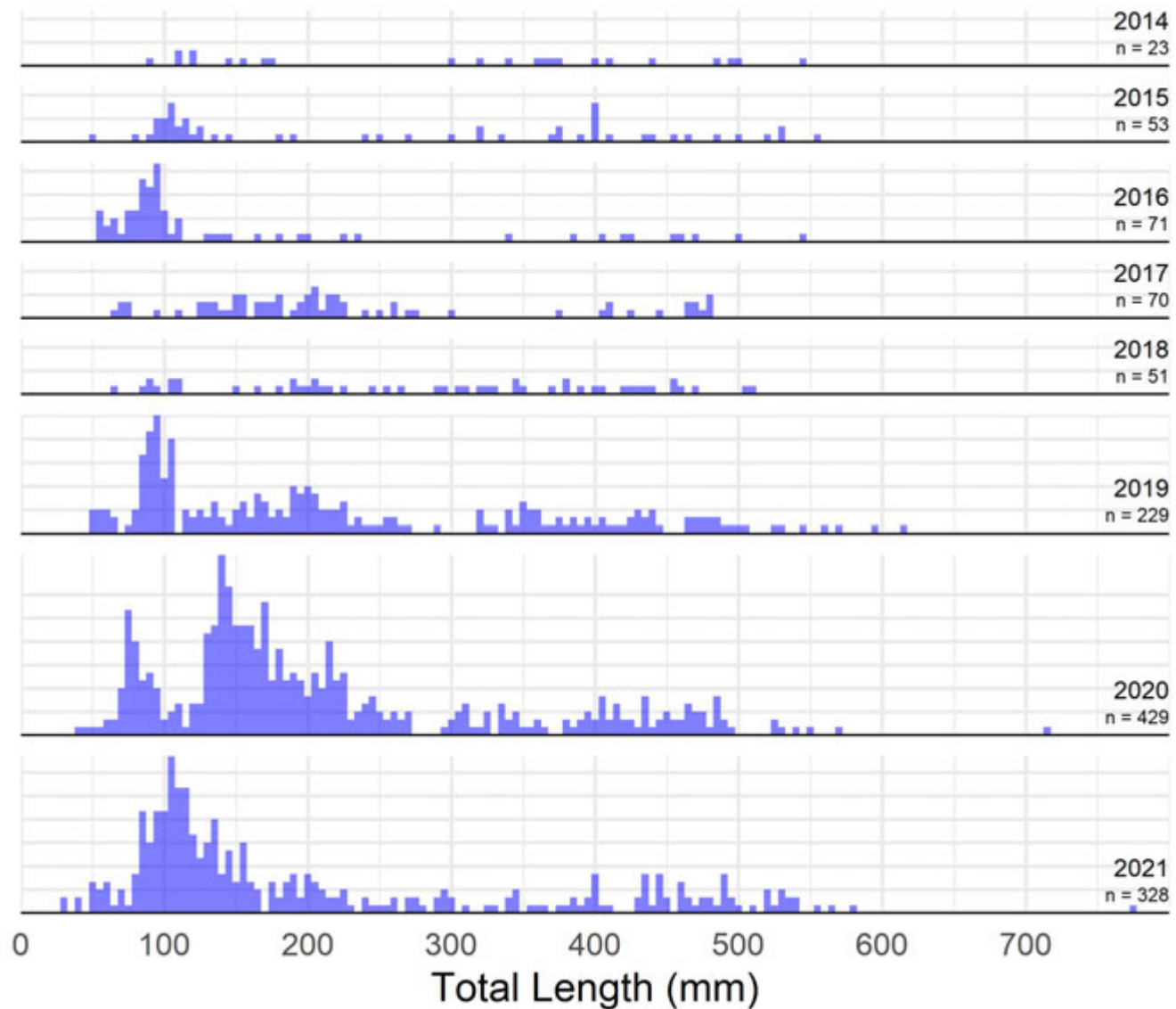
26.4% of total catch

2021: 321 captured, 38 recaptures

28.1% of total catch



Brown Trout lengths

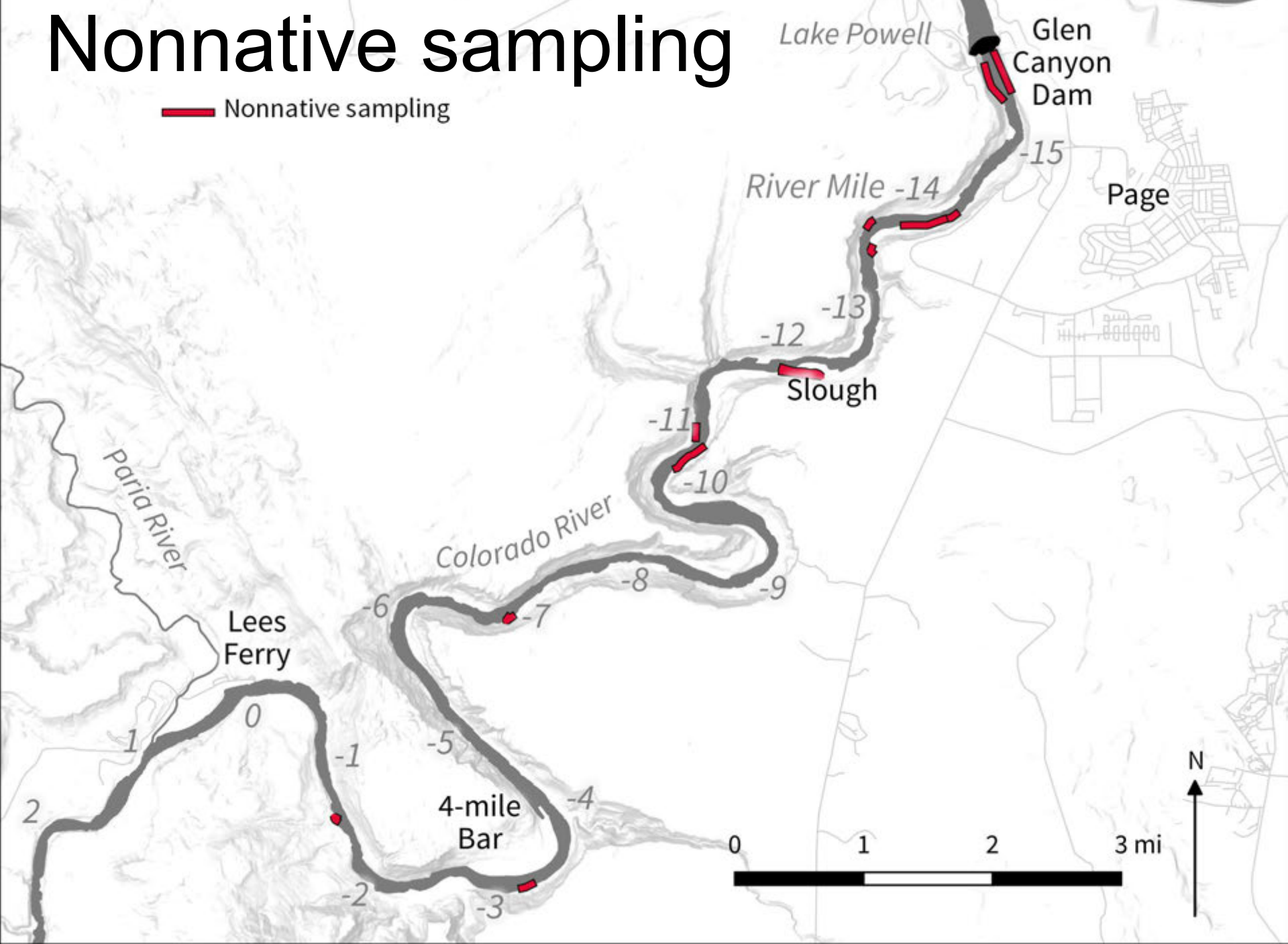


Warmwater nonnatives



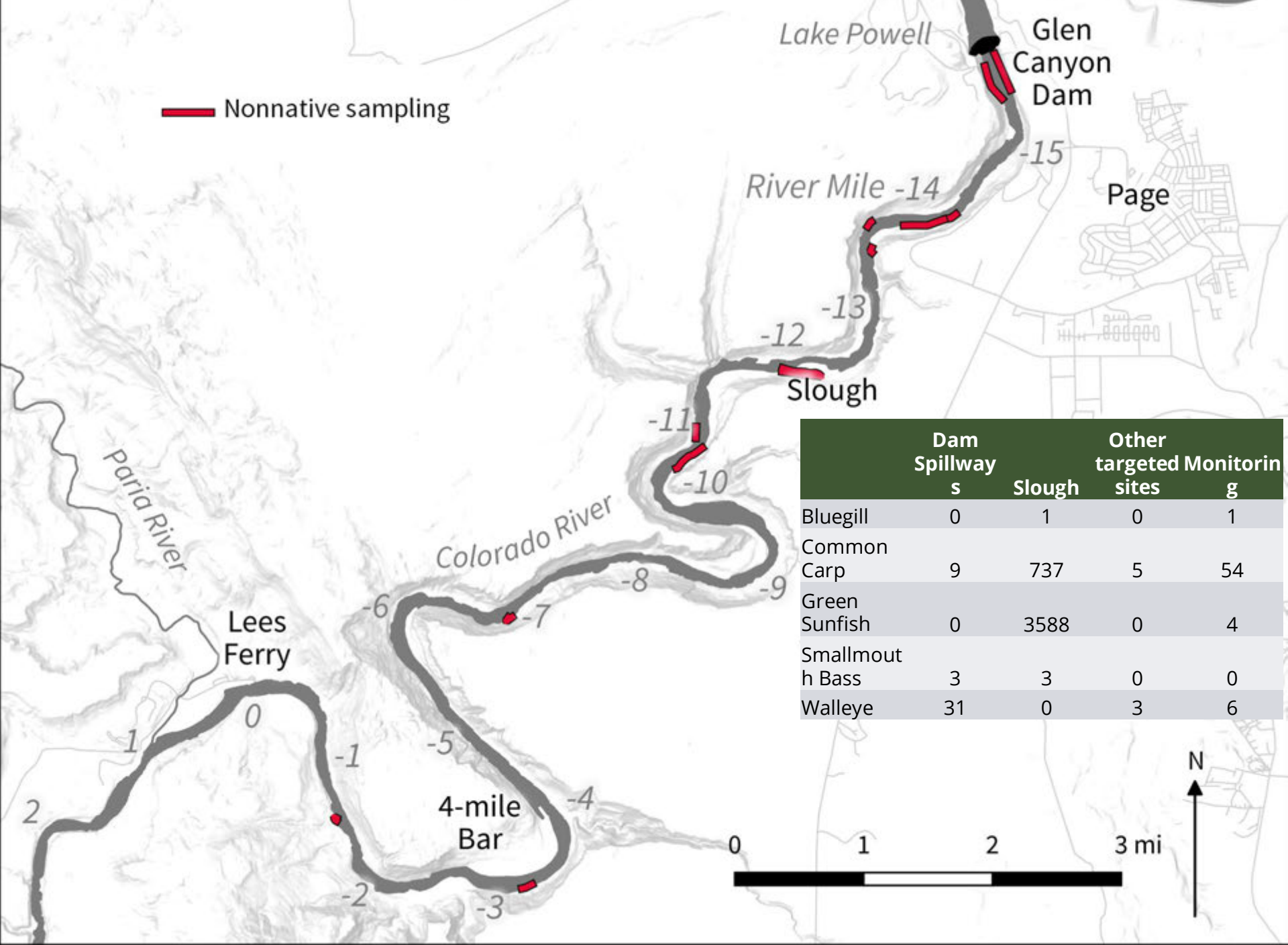
Nonnative sampling

— Nonnative sampling



Warmwater nonnative catch

Species	2011	2012	2013	2014	2015	2016	2017	2018	2019	2020	2021
Common Carp	70	52	78	82	210	67	39	69	32	85	21
Brown Trout	8	7	18	23	53	71	70	51	229	429	328
Green Sunfish	0	0	1	0	3553	2	2	2	7	23	2
Smallmouth Bass	1	0	2	0	0	0	1	1	1	0	0
Walleye	7	4	3	6	8	5	1	0	3	0	3
Bluegill	0	0	0	0	0	0	1	0	0	1	0



Summary of Results

- Very low Rainbow trout numbers, but some age-0 fish observed in fall
- Brown trout CPUE similar to 2020, Brown Trout were 28% of 2021 total catch
- Warmwater nonnative catch similar to recent years. Most warmwater fish captured in slough at -12, or at dam spillways.



Questions?