



Place, time, and consciousness in the implementation of science and adaptive management

Lucas Bair, U.S. Geological Survey, Grand Canyon Monitoring and Research Center

Emily Palmquist, U.S. Geological Survey, Grand Canyon Monitoring and Research Center

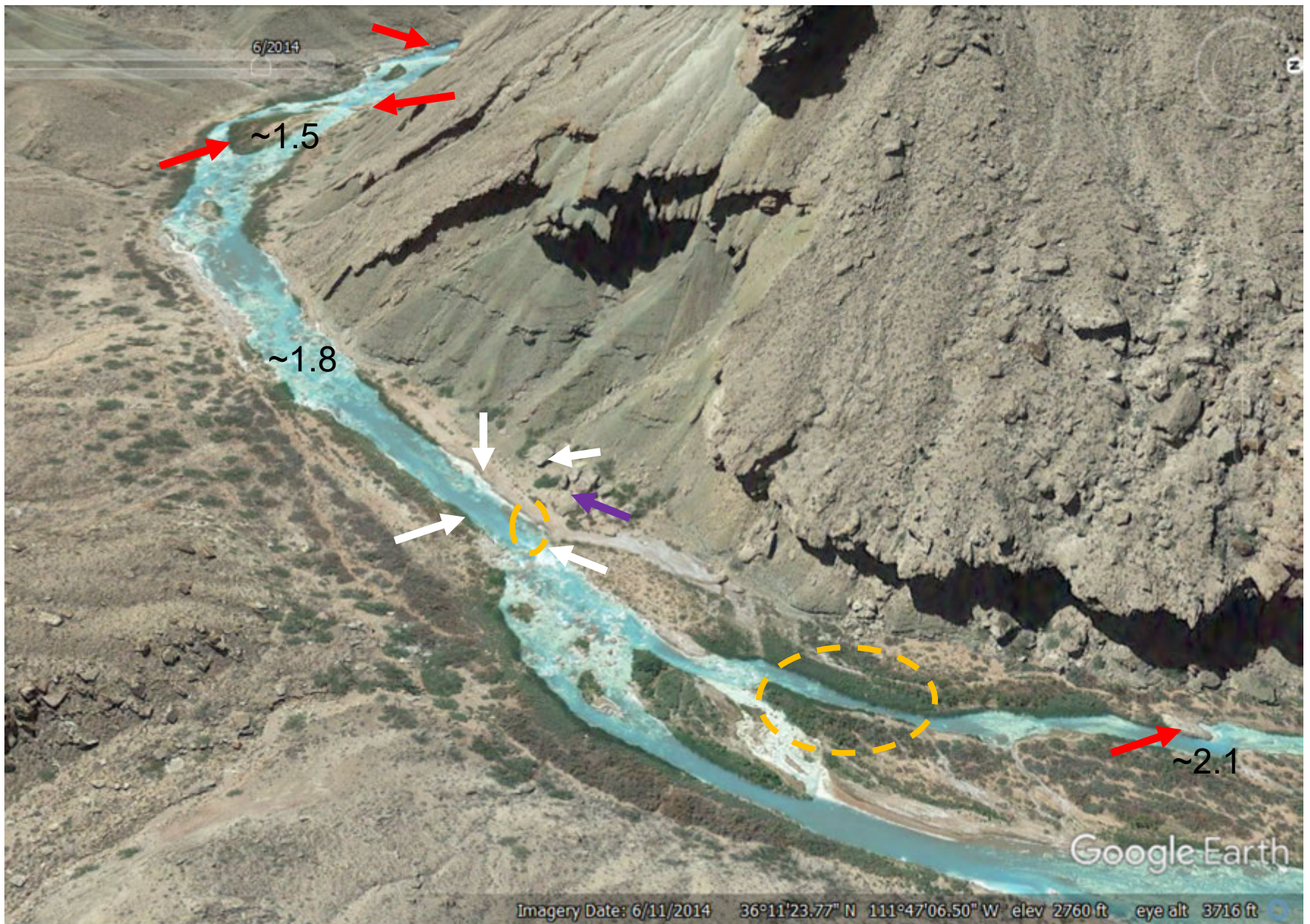
Charles Yackulic, U.S. Geological Survey, Grand Canyon Monitoring and Research Center

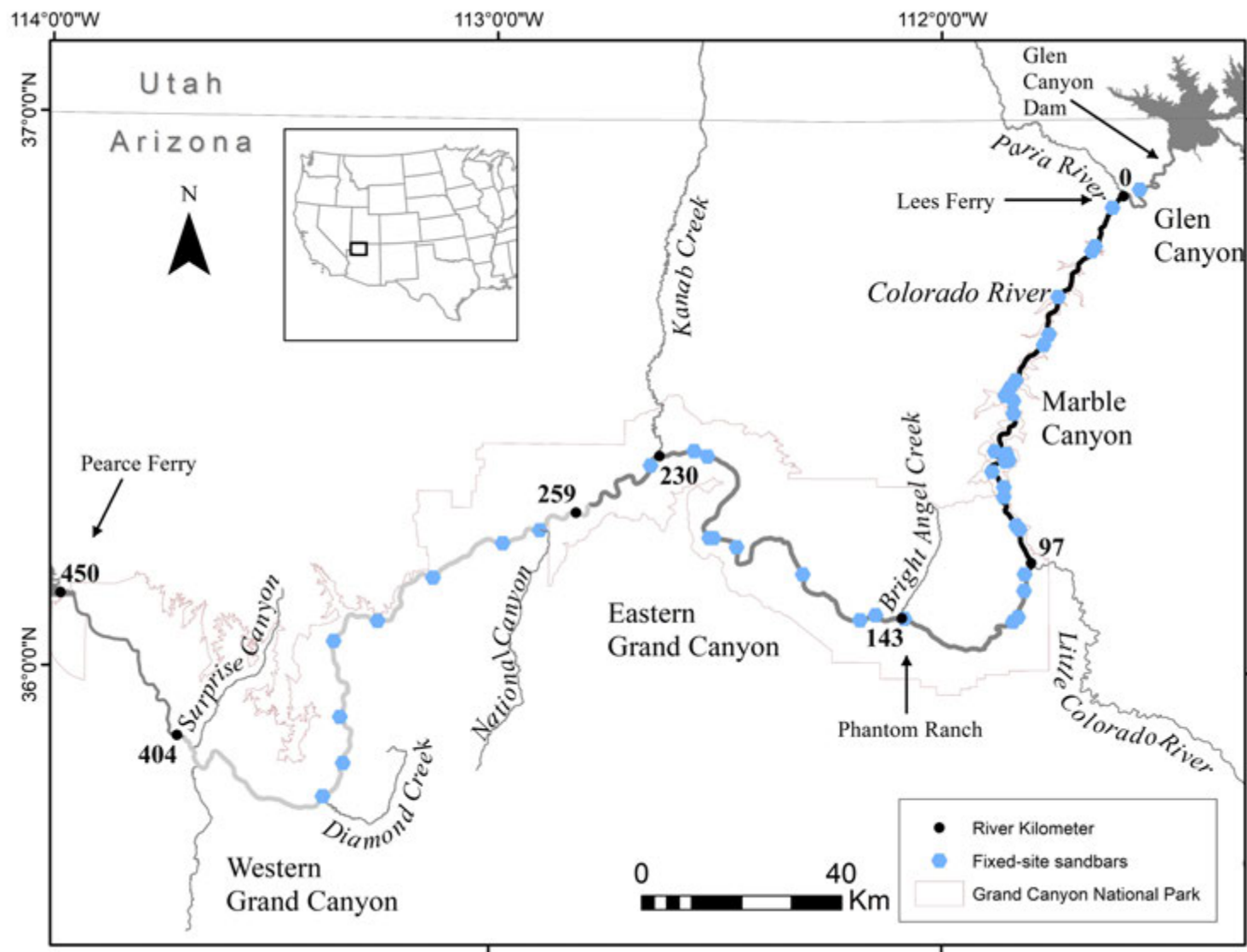
Glen Canyon Dam Adaptive Management Program, Annual Reporting Meeting,
January 21, 2021

U. S. Department of Interior
U.S. Geological Survey

Photo Credit: Peter Bungart







E. C. La Rue
09/30/1923



Stake 701
RM 215.95 L



A. H. Fairley
05/17/2017



Photo Credit: Freshwaters Illustrated/ US Geological Survey



Photo Credit: Freshwaters Illustrated/ US Geological Survey



Photo Credit: Freshwaters Illustrated/ US Geological Survey



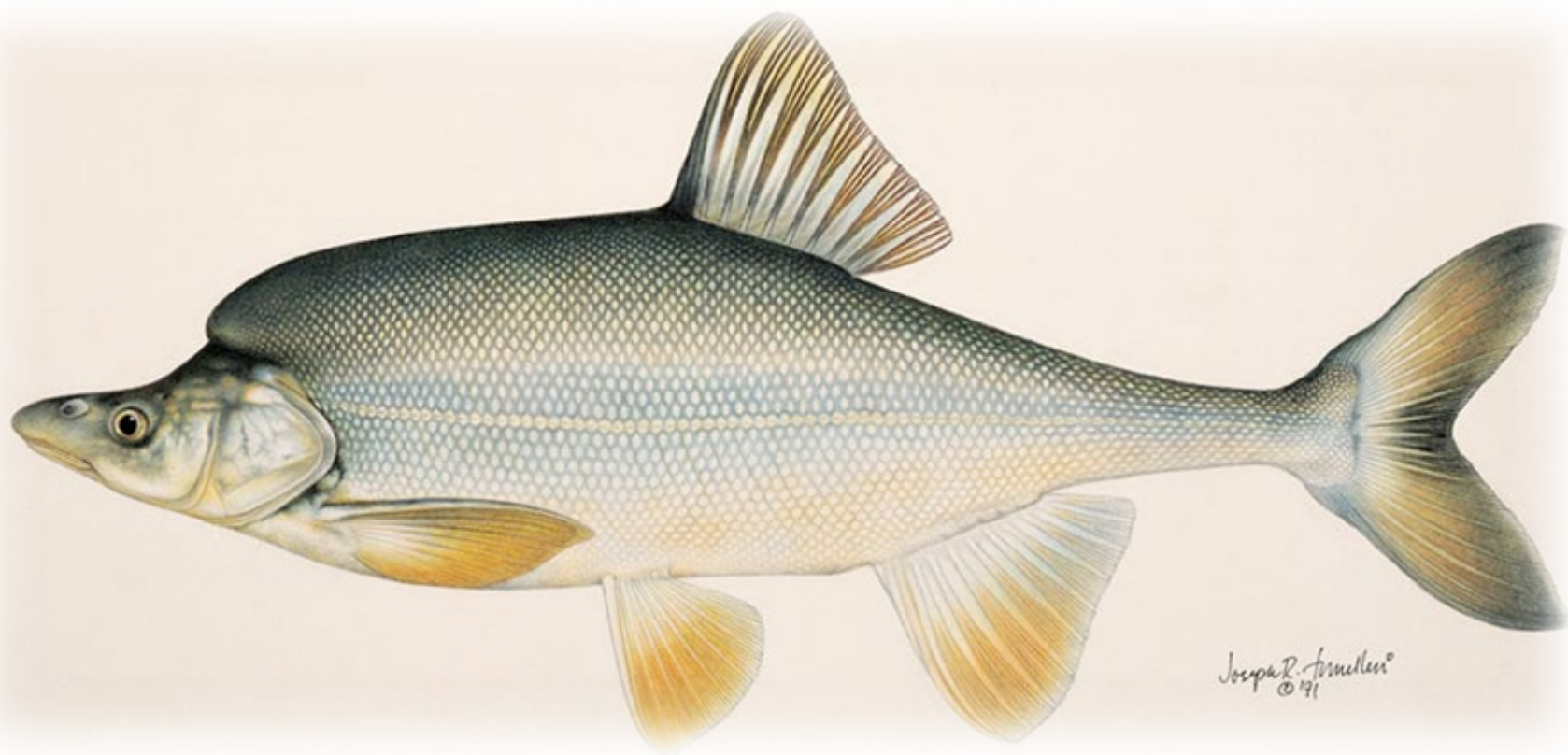




Photo Credit: Peter Bungart