



# FISHERIES PROGRAM

GLENN SELBY  
FISH BIOLOGIST

1. Maintain, manage, and enhance the quality, abundance, availability, and diversity of sport fishing opportunities while contributing to the recovery of native fishes.
  2. Increase public awareness of the Navajo Nation's sport fishing resources and opportunities.
  3. Aggressively pursue funding adequate to support all Tribal management activities for all sport fishes and their habitats.
-



# NNDFW FISHERIES

Sport Fishing

Tribal Hatchery

Native Fish Program

Chuska Mountains

Defiance Plateau



## SPORT FISHING

Lake sampling

Electrofishing 2-3 lakes per year

Creel surveys

Mail out surveys

Lake stocking

USFWS

NNDFW

Warm and cold water fisheries

Tribal Hatchery operation







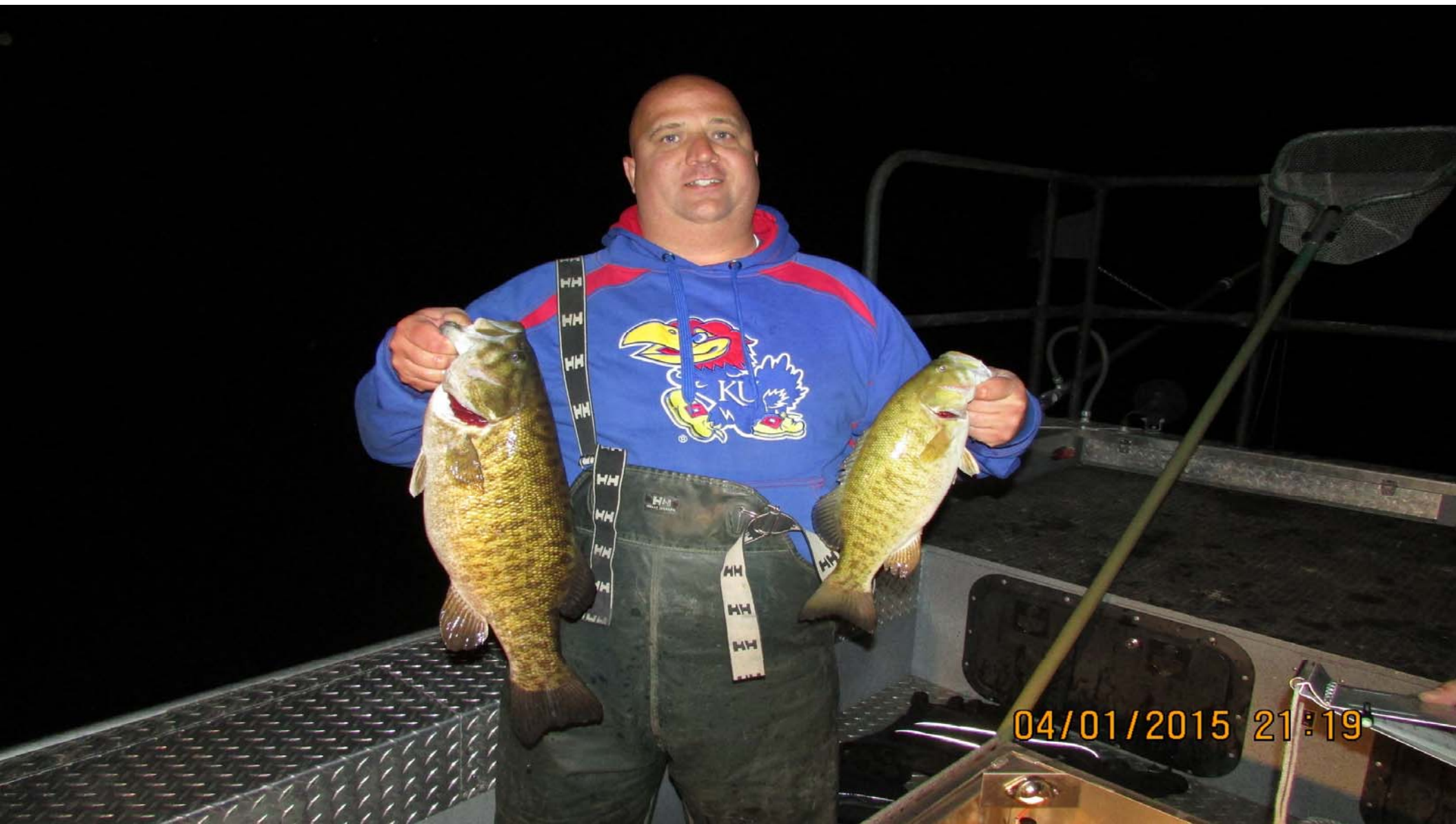








04/01/2015 21:20



04/01/2015 21:19















# LAKE STOCKING

Currently stocking 8 lakes

- NNDFW hatchery

- USFWS hatcheries

Rainbow trout

- Wheatfield

- Cutter

- Berland

- Asaayi

Channel catfish

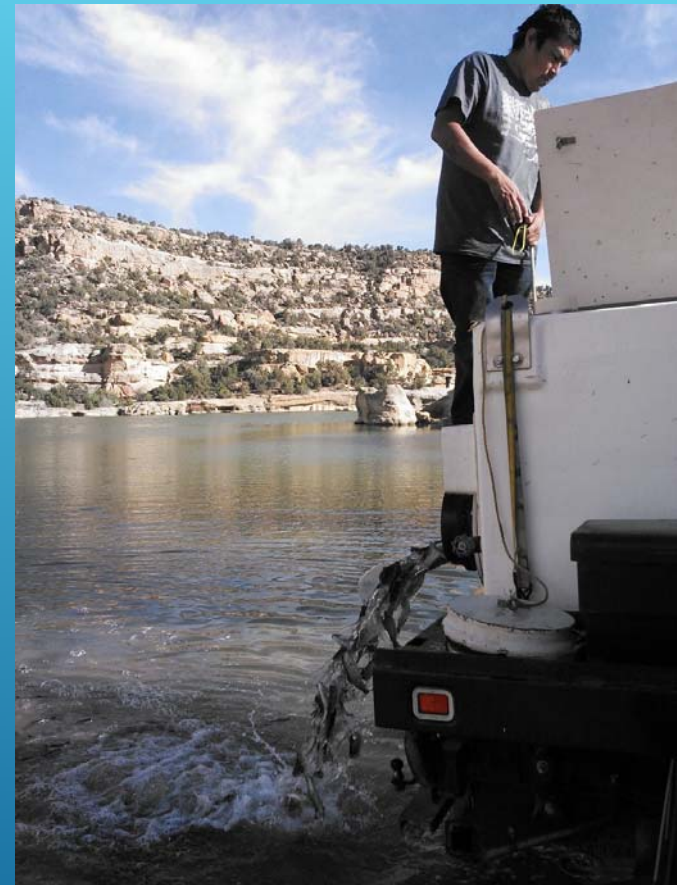
- Ganado

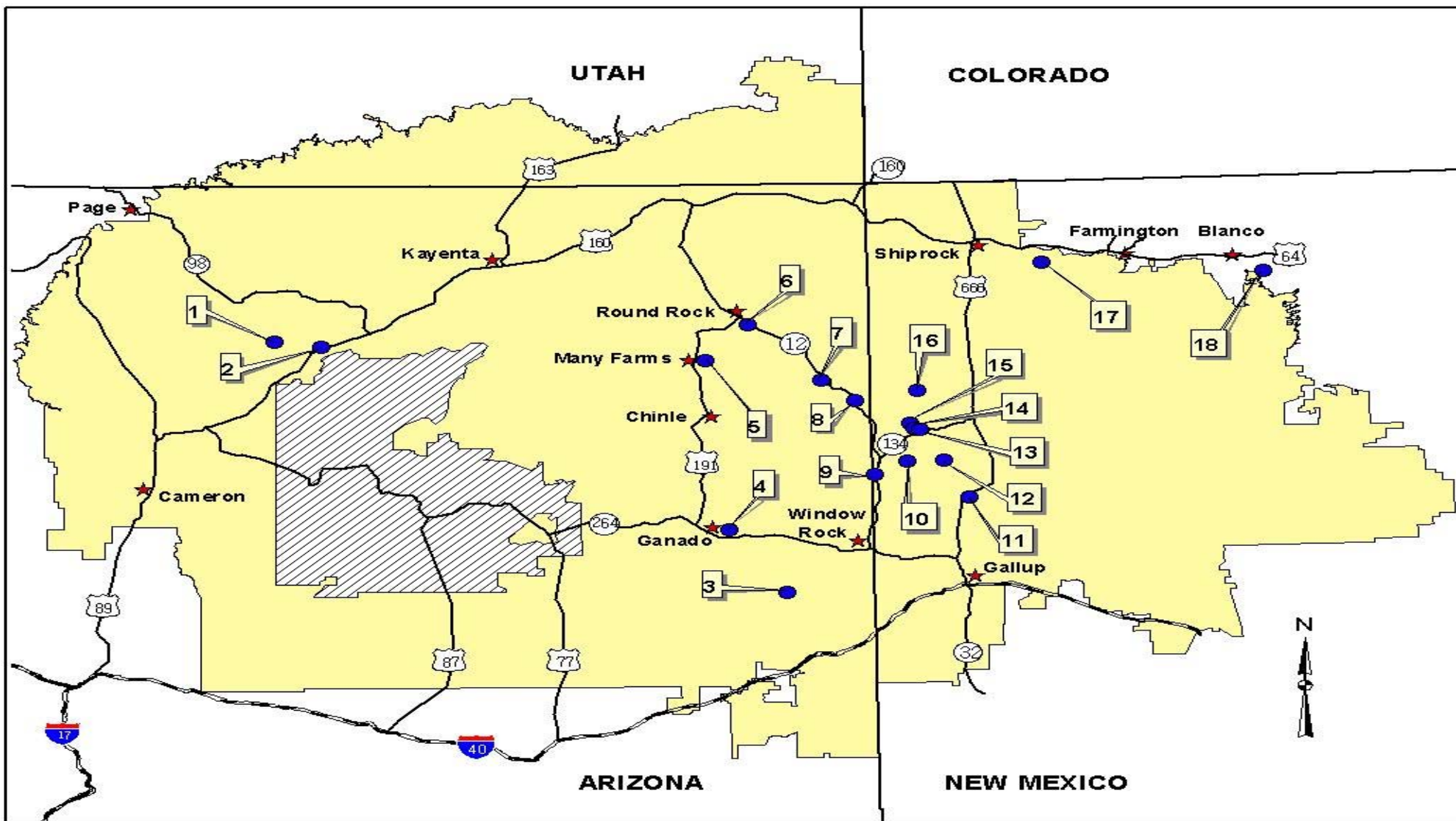
- Many Farms

- Morgan

- Cow Springs

Tsalle (dam) will be stocked again when conditions are suitable









## NNDFW TRIBAL HATCHERY

Located in Toadlena, NM

Began operation in March 1983

Raise rainbow trout from eyed eggs to stock out

Fish stocked into Navajo Nation waters

2 Fish Culturists and Fish Biologist



## NNDFW TRIBAL HATCHERY

Receive eggs twice a year (March/November)

Eggs received from Erwin NFH and White Sulphur Springs NFH

Stock out twice a year (April/October)

4 fiberglass raceways and 2 rearing ponds



# NNDFW TRIBAL HATCHERY

## RECENT IMPROVEMENTS



Gravel road and fish loading areas

Sod

New raceways

Lined ponds

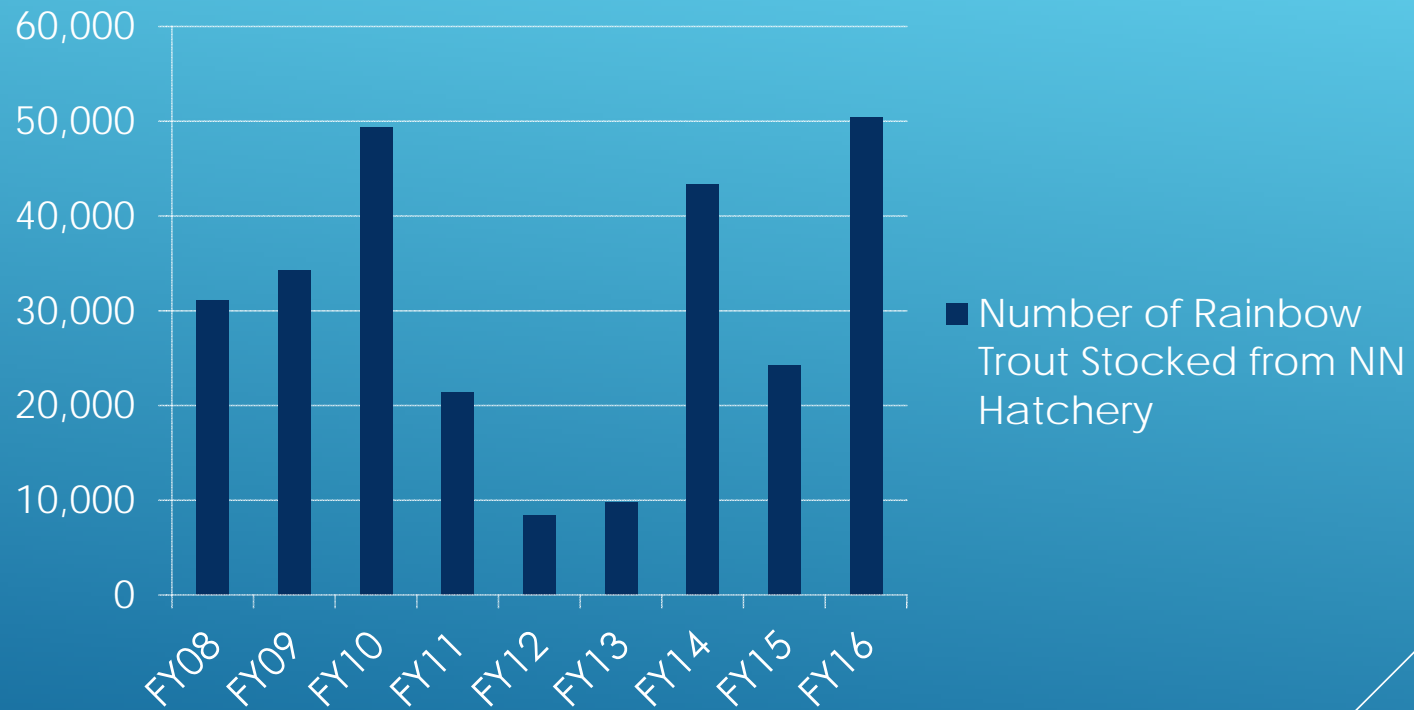
New signs

Retaining wall

New roofs on warehouse and office trailer

New Storage building

## NN Hatchery Rainbow Trout Stocking





## NNDFW TRIBAL HATCHERY

Hatchery tours are available

Several schools and summer youth programs visit annually



## NATIVE FISH PROGRAM

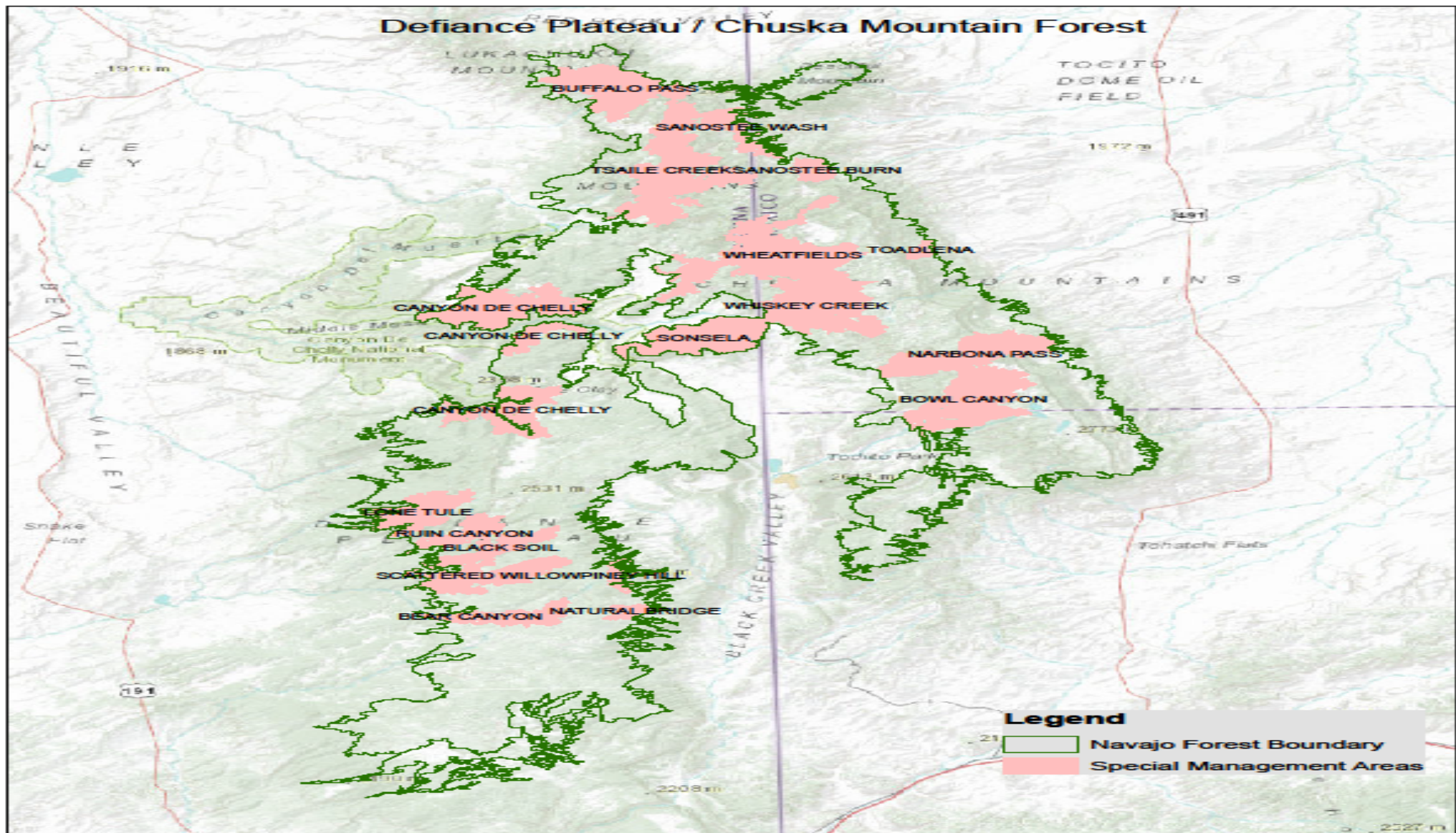
Chuska Mountains

Bluehead sucker

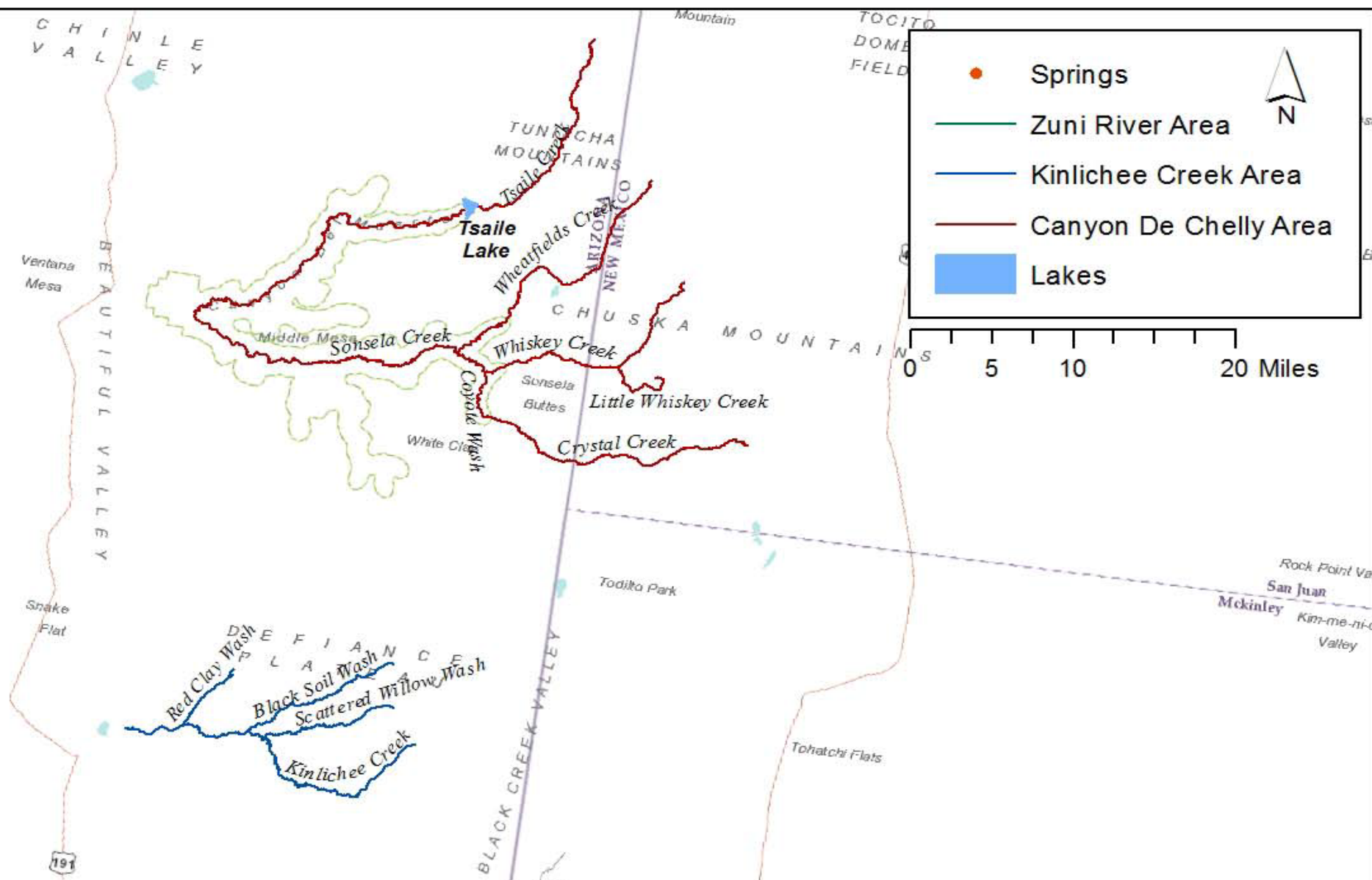
Speckled dace

Defiance Plateau

Zuni bluehead sucker









## CHUSKA MOUNTAINS

Crystal Creek

Whiskey Creek

Wheatfield Creek

Tsaile Creek

Coyote Wash



## DEFIANCE PLATEAU

Kinlichee Creek

Scattered Willow Creek

Black Soil Springs



## BLUEHEAD SUCKERS

Found in the Chuska Mountains

Currently a G4 (candidate) species on the Navajo Endangered Species List

Will be uplisted to G2 (endangered) on the NESL



## ZUNI BLUEHEAD SUCKERS

Subspecies of bluehead sucker

Rio Grande sucker X bluehead sucker

Federally listed as endangered in August 2014

Found only in portions of AZ and NM

G4 on the NESL, will be uplisted to G2





## ISSUES FACING NATIVE FISH

Overgrazing

Nonnative species

- Brown trout

- Rainbow trout

- Green sunfish

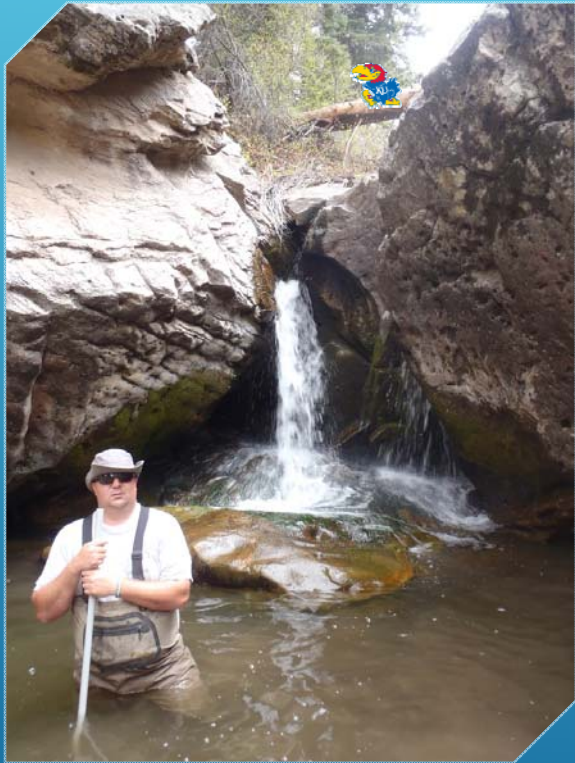
- Goldfish

- Fathead minnow

- Crayfish

Drought/Loss of Water

Wildfire



## RECENT/UPCOMING PROJECTS

Brown trout removal

Stream crossing renovations

Fathead minnow removal

Crystal Creek remote monitoring

Native Fish in Classrooms



## BROWN TROUT REMOVAL

Whiskey Creek on the Chuska Mountains

First pass completed in July 2015 (259 removed)

Second pass completed in September 2015 (213 removed)

Assisted by NMFWCO

Removed 473 BNT to date

BNT removal will continue



## STREAM CROSSING RENOVATIONS

Upper Whiskey Creek-completed August 2015

Crystal Creek-scheduled for May 2016

Wheatfield Creek

Lower Whiskey Creek

NNDFW/NMFWCO



















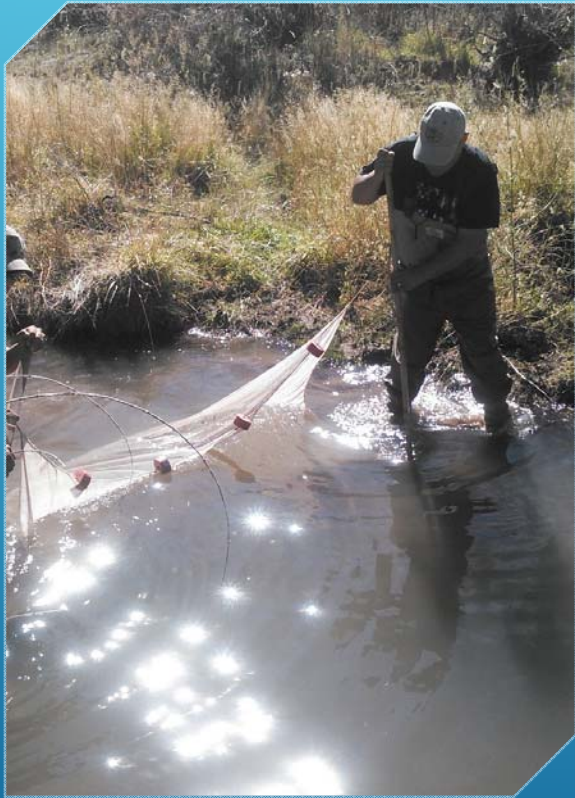












## FATHEAD MINNOW REMOVAL

Crystal Creek

removed 2,711 FHM

Kinlichee Creek

removed 3,845 FHM

Will continue to remove FHM from both creeks





## CRYSTAL CREEK REMOTE MONITORING

Funded by BIA ESA program

PIT tag bluehead suckers in Crystal Creek

PIT tag antennas in Crystal Creek to monitor movement of BHS



## NATIVE FISH IN CLASSROOMS

Native Fish in the Classroom is a hands-on program intended to introduce school children to water quality, fish and wildlife issues, and encourages them to seek solutions. The program is designed to engage students and create interest in native fish species and their habitats as well as to introduce children to careers in natural resources. This is a step towards fostering a sense of stewardship for all animals and natural resources.



## NATIVE FISH IN CLASSROOMS PROGRAM

Received funding to begin Native Fish in Schools program

Modeled after NMFWCO Native Fish in Schools program

3 classes currently participating

Tohaali Community School

Crystal Boarding School

DEAP School

Bluehead suckers and speckled dace are used for classrooms

Introduce students to native fish species, native fish conservation, and careers in natural resources



# NATIVE FISH IN CLASSROOMS

INTRODUCTION TO THE PROGRAM AND TO THE FISH FROM FISH BIOLOGIST

PERIODIC VISITS FROM FISH BIOLOGIST

CHECK ON FISH

ANSWER QUESTIONS FROM STUDENTS

CAREER PRESENTATIONS FROM OTHER FISH AND WILDLIFE EMPLOYEES

WILDLIFE CONSERVATION OFFICER

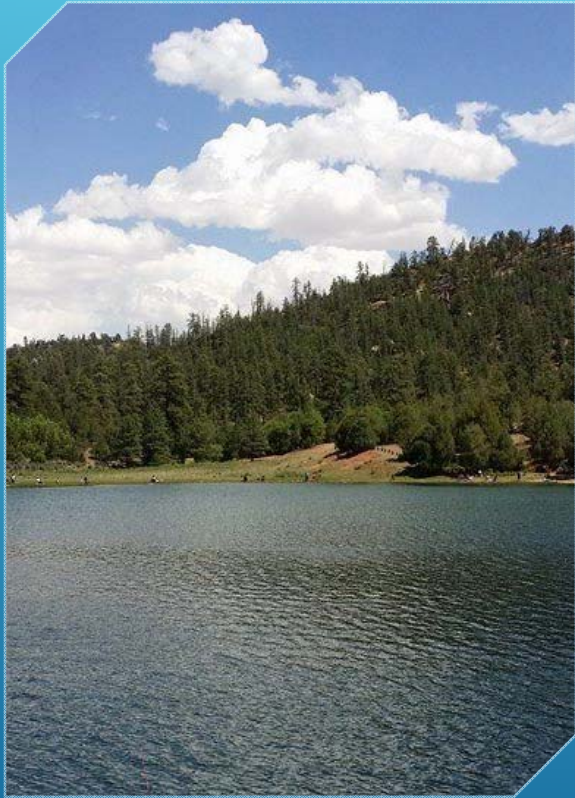
ZOOLOGIST

FISH CULTURIST

FISH ANATOMY EXERCISE WITH USFWS/NMFWCO

OPPORTUNITY FOR A FIELD TRIP TO RELEASE THE FISH AND OBSERVE FISH SAMPLING TECHNIQUES





QUESTIONS?

