



CURRENT STATUS OF THE LEES FERRY FISHERY

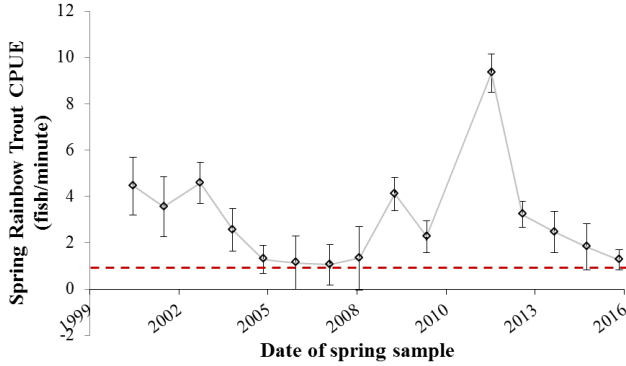
Spring 2016 *preliminary data



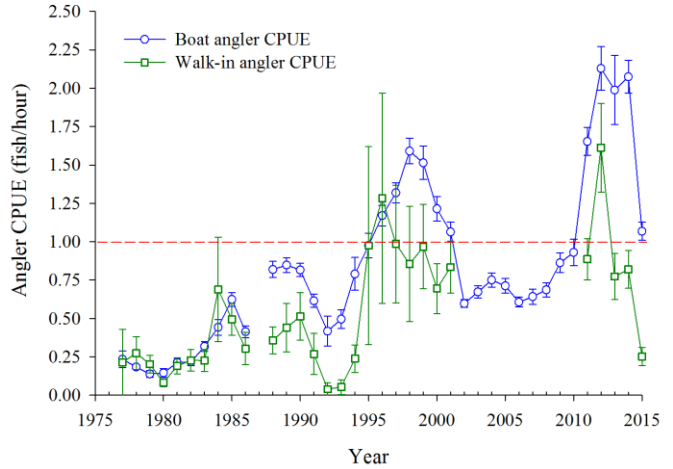
Goal: To maintain a quality rainbow trout fishery in Glen Canyon

1. Electrofishing catch is > 1 rainbow trout/minute.

Current status: 1.25 fish/ min

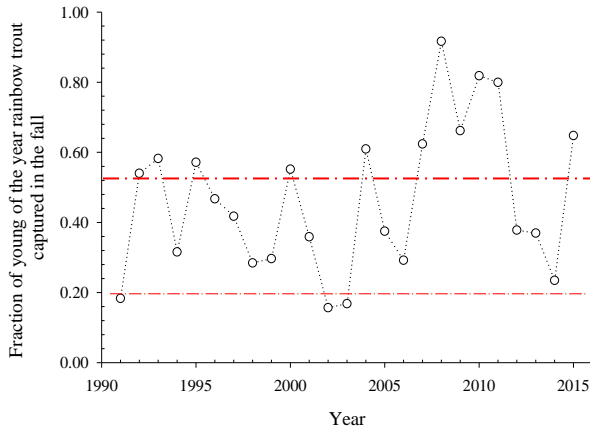


3. Angler catch rate ≥ 1 Rainbow Trout/ hour.



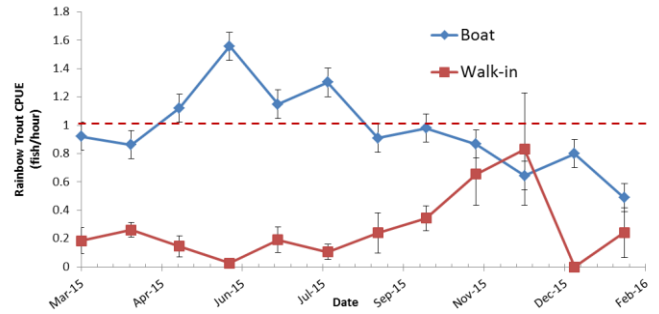
2. Rainbow Trout < 6 inches compose 20-50% of the fall electrofishing catch.

Current status: 65%

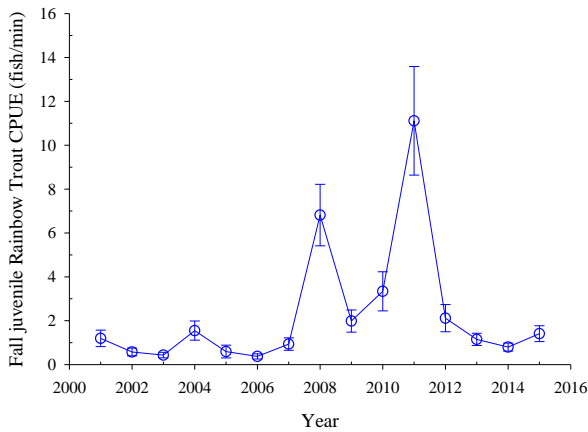


Boating (12 month ave): 0.97 fish/hour

Walk-in (12 month ave): 0.26 fish/hour



Current status: 1.4 juvenile rainbow trout/min

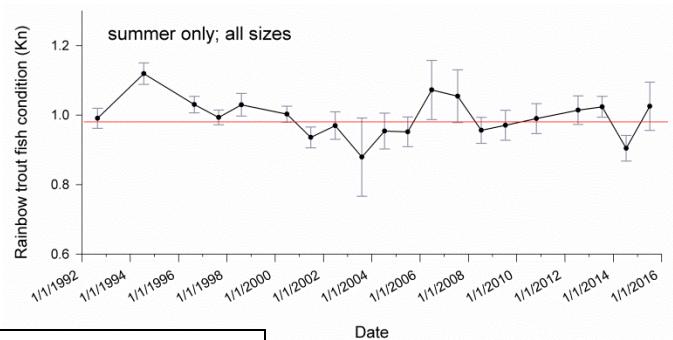


4. 10 Rainbow Trout ≥ 14 inches caught by an angler in a 10 hour day. At least 1 ≥ 20 inches in length.

Not measured in 2015. Stay tuned!

5. Maintain Rainbow Trout condition factor ≥ 1 in summer months.

Current status: 1.03 for all sizes combined



For more information, please contact:
 Bill Stewart, Aquatic Research Program Manager
 BStewart@azgfd.gov; (623) 236 – 7368