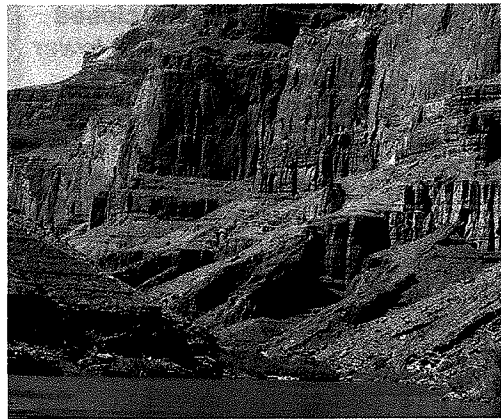


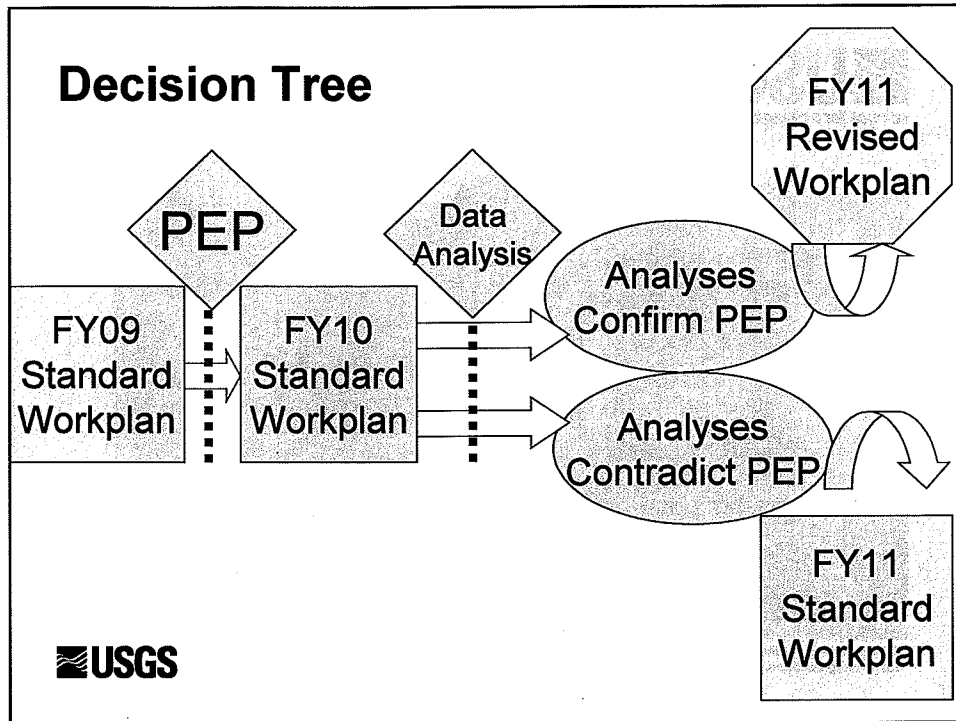


U.S. Department of the Interior
U.S. Geological Survey

General Approach

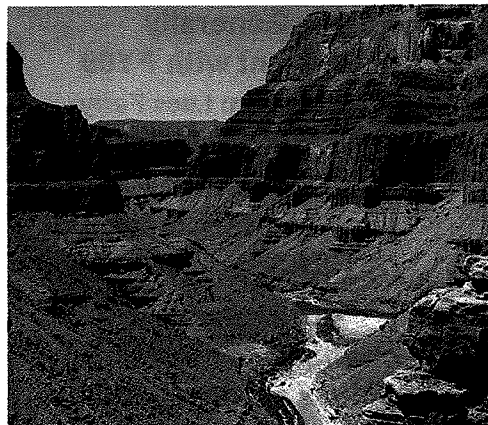
- **FY10: Generally consistent with FY09**
 - **Exception: Lees Ferry trout monitoring**
- **FY10: Conduct analyses recommended by PEP**
- **FY11: Implement changes to monitoring unless contradicted by analyses**





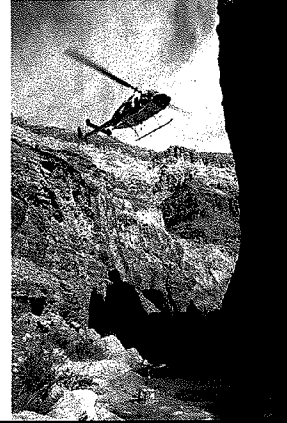
Little Colorado River HBC monitoring

- FY10: Maintain spring and fall mark-recapture, closed population estimate in lower 13.6 km
- FY10: Maintain spring HBC monitoring lower 1200 m
- FY 11: Spring hybrid monitoring
- Closed population estimate
- Additional random sampling
- Nonnative monitoring



Translocation and monitoring above Chute Falls

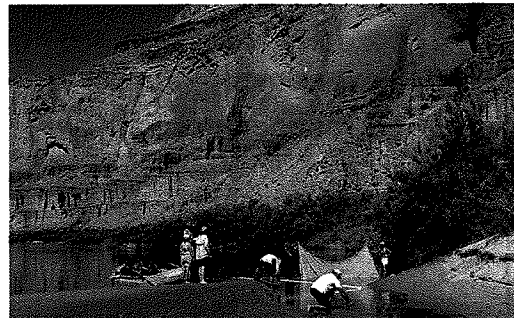
- Maintained in FY10-11 budget
- Review need for translocations with HBC Genetics Management Plan; consider
 - Less frequent schedule OR
 - Alternative funding
- Future monitoring: Consistent with translocation schedule



 USGS

Mainstem Colorado R. monitoring

- FY10:
 - 2 spring e-shocking monitoring (Feb., Mar., motor)
 - 1 fall trammel net monitoring (Sep., motor)
- FY11:
 - 2 spring e-shocking monitoring (Feb., Mar., motor)
 - 1 fall trammel net monitoring (Sep., motor)
 - 1 fall seine and other net monitoring (Oct., float)



 USGS

Remote PIT tag reading in LCR

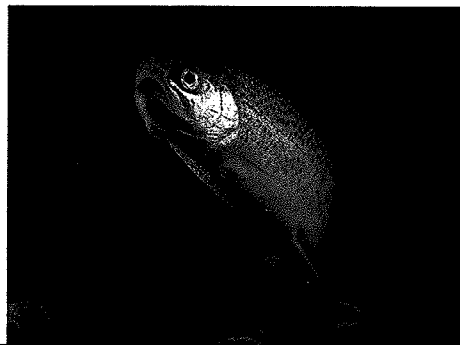
- FY10-11: Continue and expand
 - Additional antennas
 - Seek graduate student (O&M, analysis)



 USGS

Lees Ferry Fishes monitoring

- FY10-11:
 - 2 randomized e-fishing (RBT + nonnatives)
 - 2 early life stages RBT monitoring (responses to experimental flows)
 - 1 focused nonnative e-fishing (e.g., carp pond)



 USGS

FY10 Analyses

- **Fish cooperators (USGS, USFWS, AZGFD) reviewing fish capture data**
- **Meeting to review results January 2010 (annual reporting meeting)**
- **Recommend status of FY11 projects, reviewed by Science Advisors**

