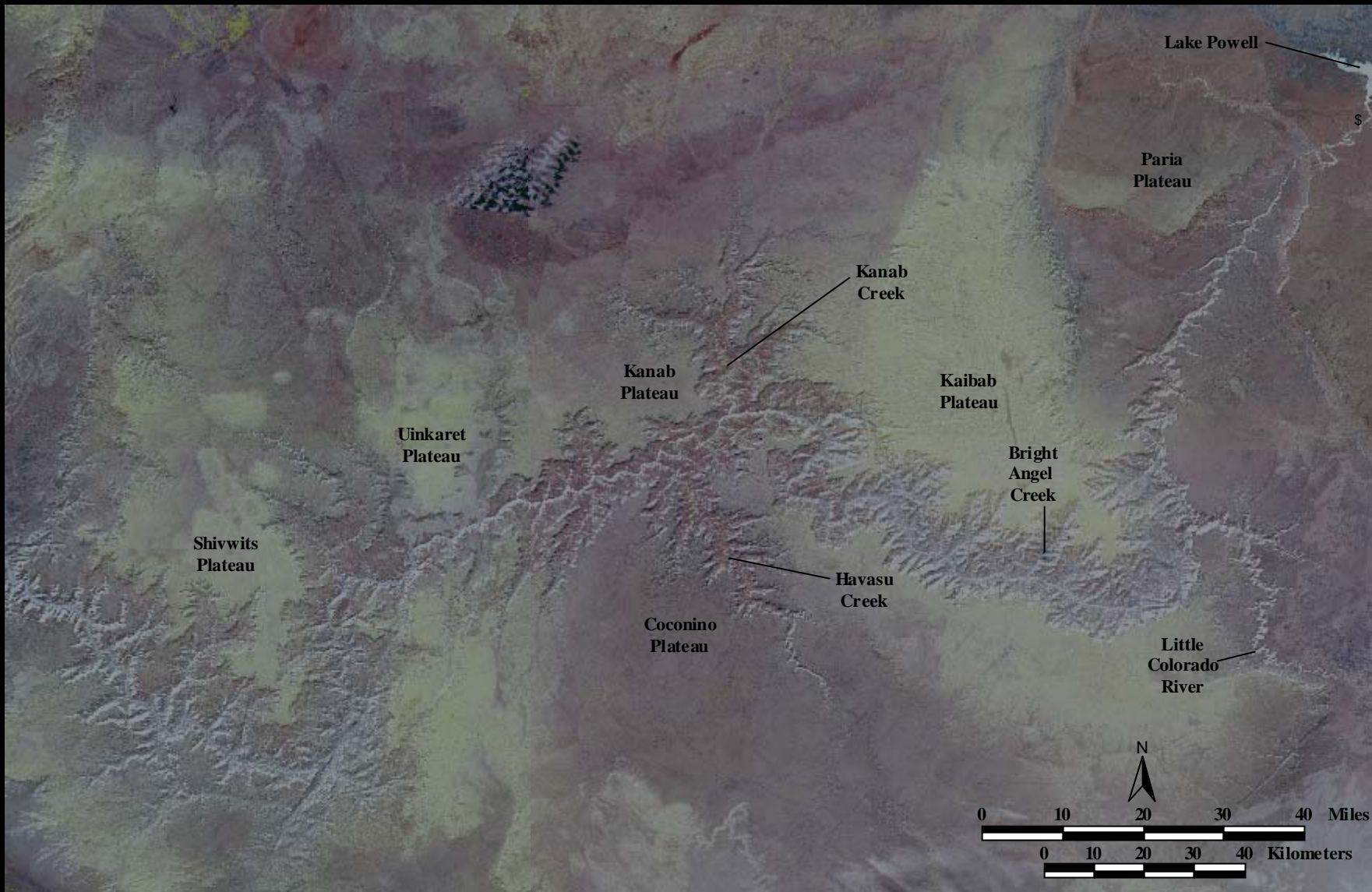




**Zuni Heritage  
and Historic  
Preservation  
Office**

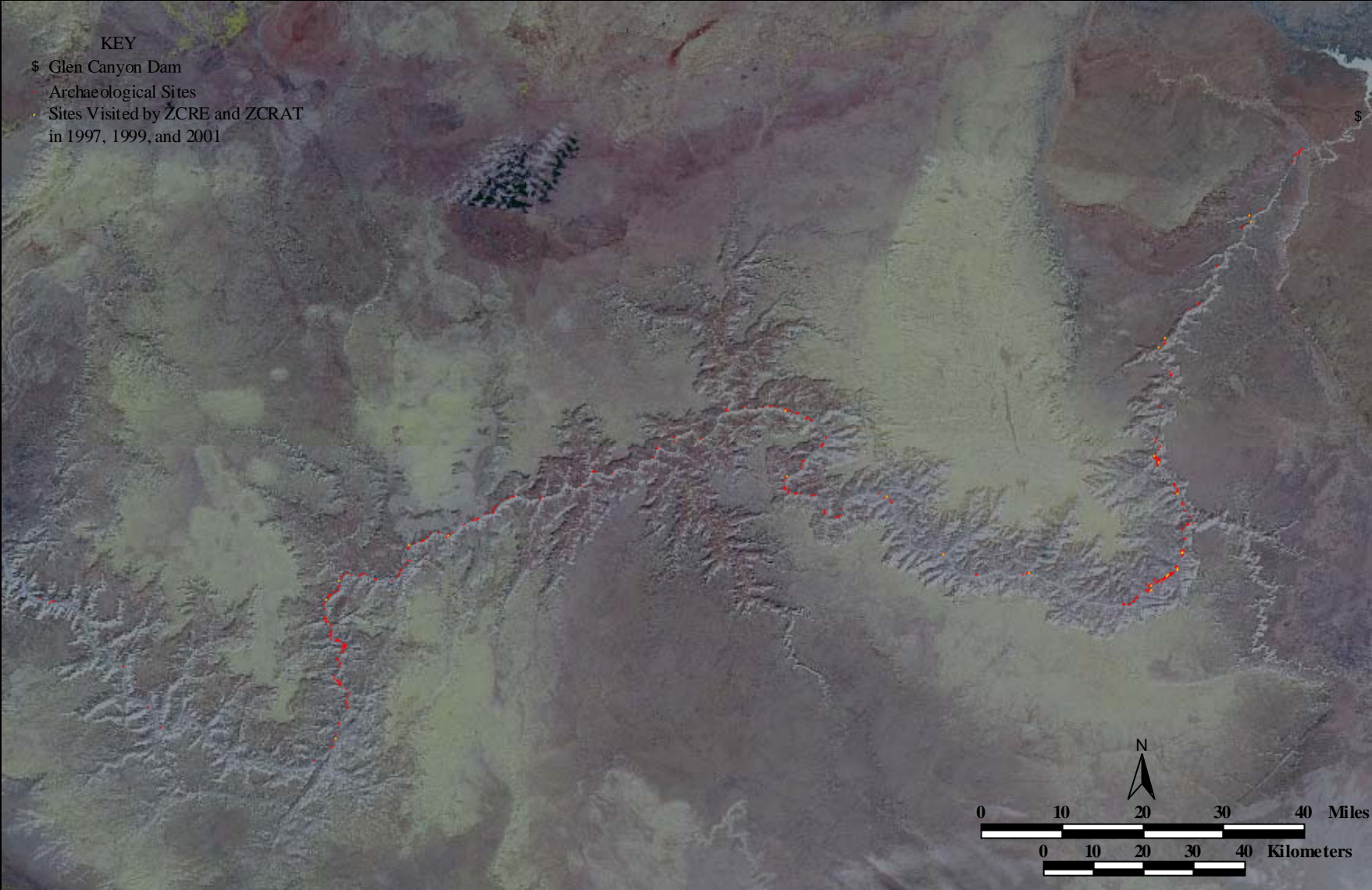


Archaeological Sites Visited During ZCRE and ZCRAT River Trips in 1997, 1999, and 2001.



Site Number	Description	Number of Visits
AZ:A:15:5	Pictographs	3
AZ:A:15:30	Roasting Feature	1
AZ:A:16:1	Whitmore Wash	3
AZ:A:16:180	Roasting Feature	1
AZ:B:10:1	Deer Creek Area, Storage Site	3
AZ:B:10:3	Deer Creek Area	2
AZ:B:10:225	Roasting Feature/Upright Slab	1
AZ:B:15:1	Structure	1
AZ:B:16:1	Structures and Interpretive Sign: Phantom Ranch	3
AZ:B:16:3	Crystal Rapid Site	3
AZ:C:5:1	South Canyon Site/Stanton Cave	3
AZ:C:5:35	Vandalized Site	1
AZ:C:6:3	Soap Creek Rapid	3
AZ:C:6:5	Petroglyph-Supai Man	3
AZ:C:9:1	Nankoweap-Granaries	2
AZ:C:9:50	Stabilization Site	1
AZ:C:13:1	Unkar Delta	1
AZ:C:13:9	A and B	1
AZ:C:13:10	Furnace Flats	3
AZ:C:13:70	Locus a-d, Burned Post	3
AZ:C:13:92	Lautier's Cabin	3
AZ:C:13:99	Palisades	1
AZ:C:13:100	Habitation Site	1
AZ:C:13:273	Roasting Feature	1
AZ:C:13:339	West of Beamer Trail	3
AZ:C:13:365	Malgosa Canyon	2
AZ:G:3:77	3-Springs Canyon	3
AZ:G:3:80	Pictographs	2







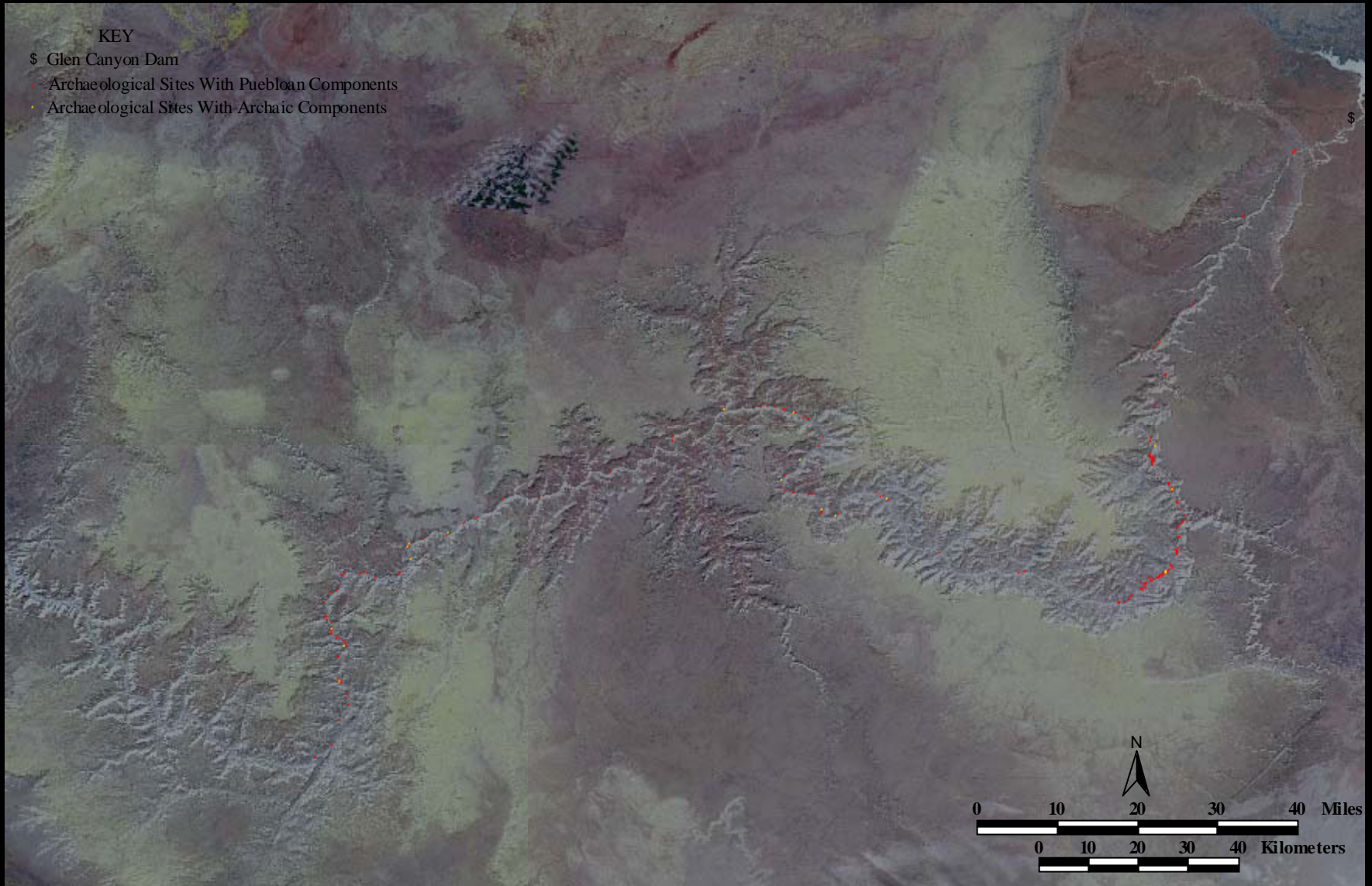
Other Places Visited During ZCRE and ZCRAT River Trips in 1997, 1999, and 2001.

<b>Description</b>	<b>Number of Visits</b>
Vaseys Paradise (Spring)	3
Quartz Crystals	3
Little Colorado River	2
Hopi Salt Mines-Pictographs	2
Elves Chasm (Spring)	3
Deer Creek Falls (water and plant collection)	3
Havasu Creek-Short Visit	3
Hematite Mine	2
Pumpkin Spring-Short Visit	2
Saddle Canyon (water and plant collection)	1
Nankoweap	1
LCR/Sipapu	1
Salt Mines	1



KEY

- \$ Glen Canyon Dam
- Archaeological Sites With Puebloan Components
- Archaeological Sites With Archaic Components







KEY

Archaeological Sites Identified as Zuni TCPs  
During 1997, 1999, and 2001 River Trips

