

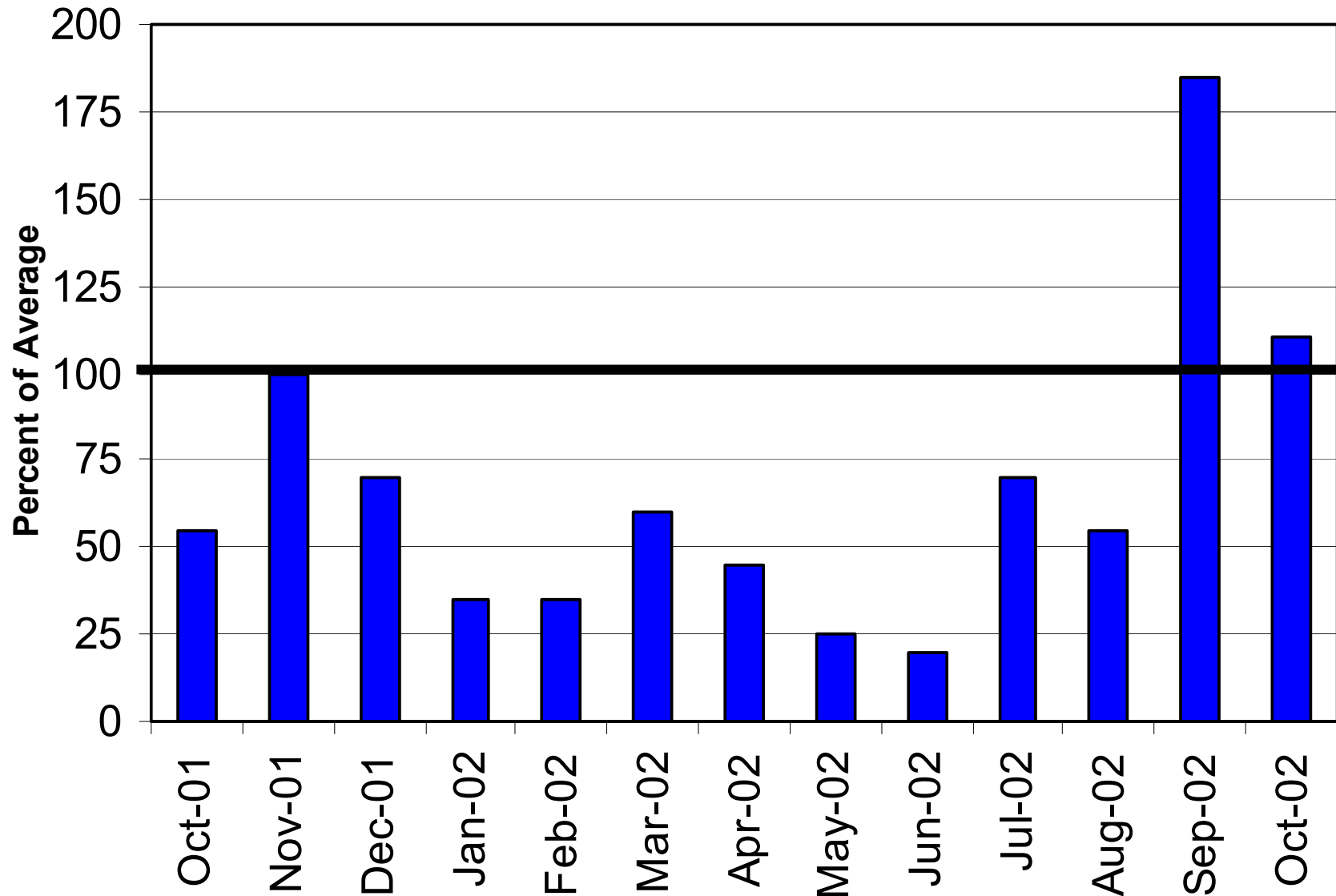


# **Basin Hydrology Colorado River Basin**

Glen Canyon Dam  
Adaptive Management Program  
Technical Work Group Meeting

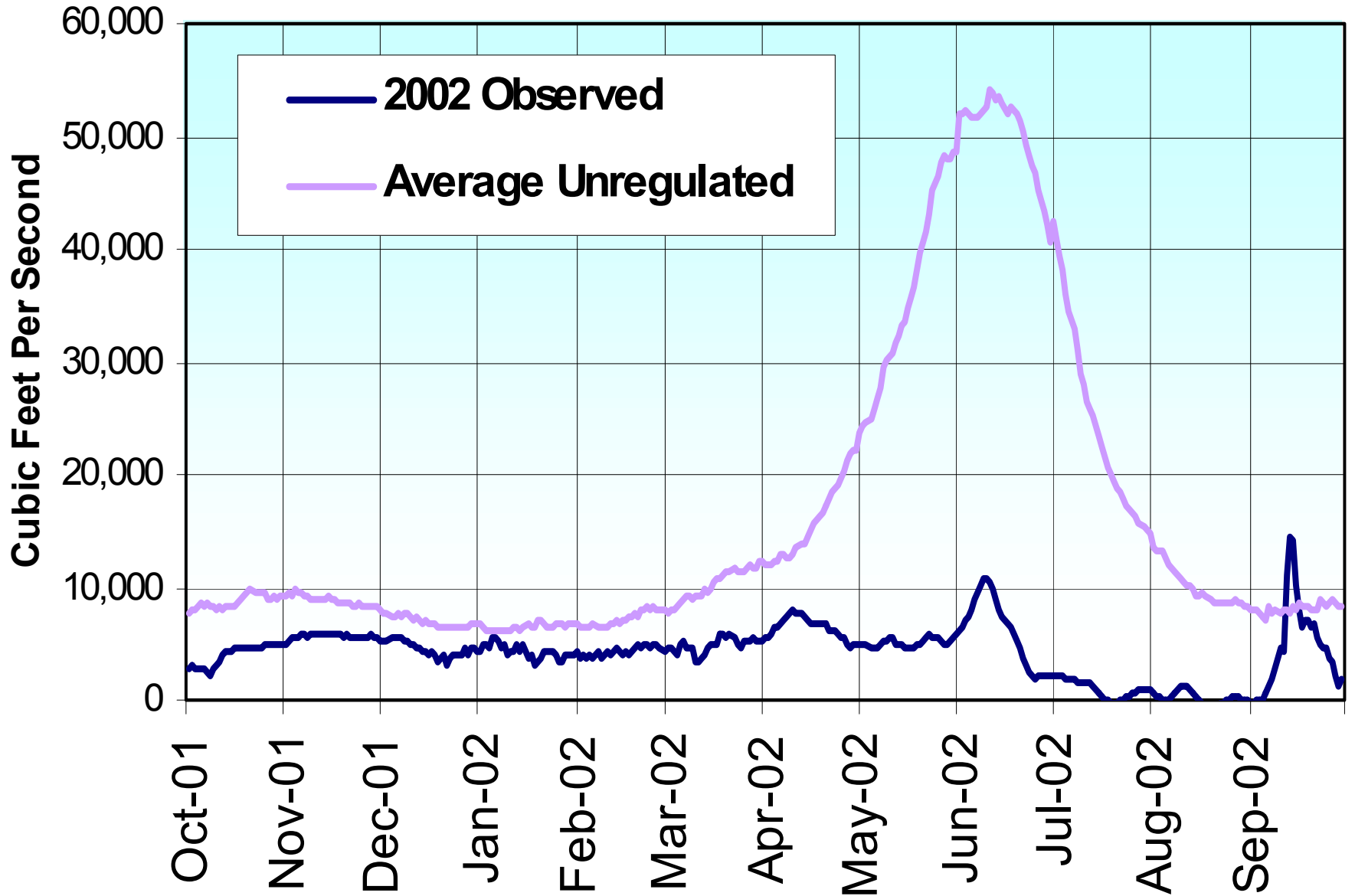
Phoenix, Arizona  
November 8, 2002

# Upper Colorado River Basin Precipitation October 2001 - October 2002



# Lake Powell Unregulated Inflow

## Water year 2002



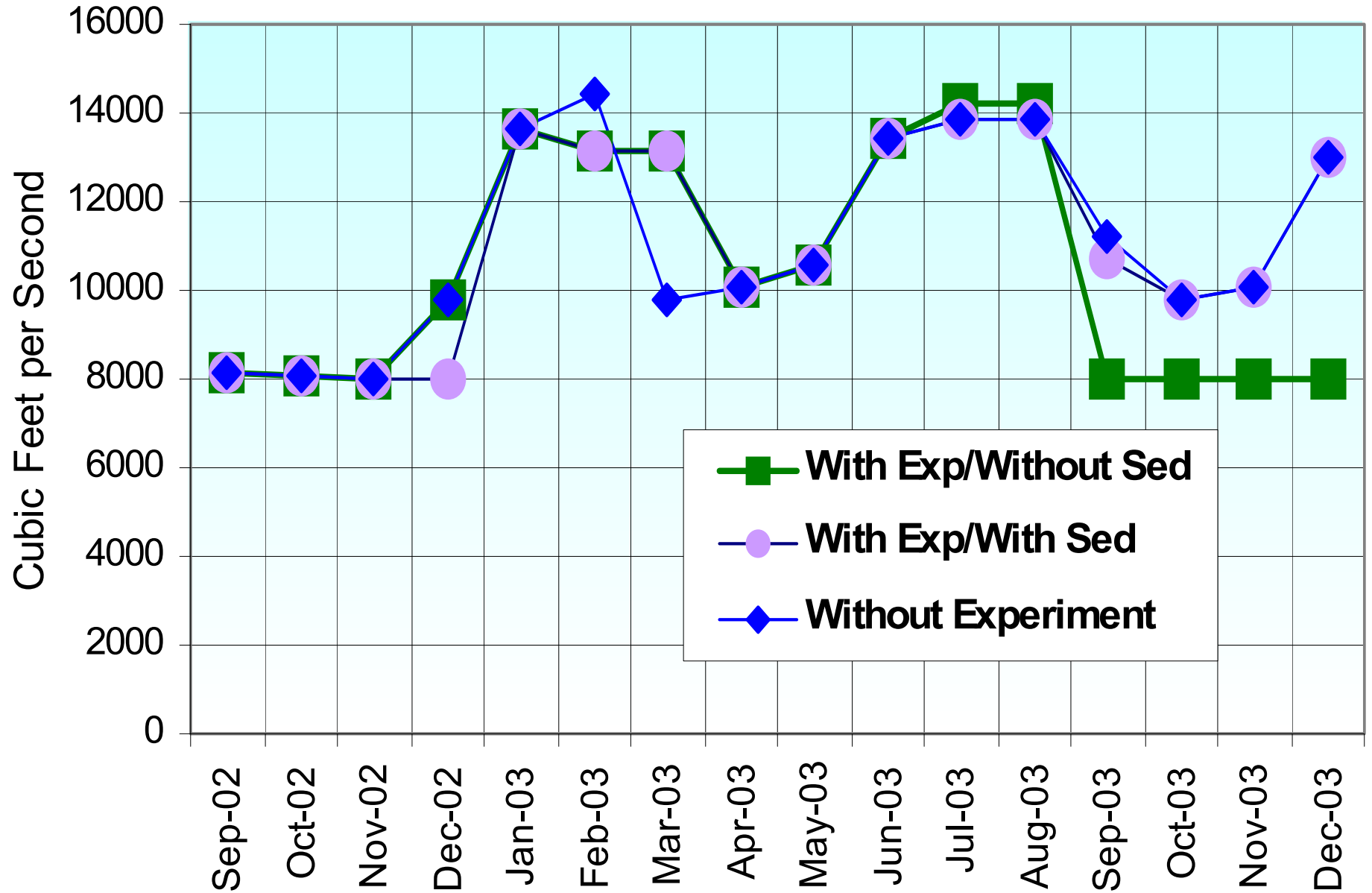
# Projected 2003 Lake Powell Inflow

(November, 2002)

Scenario	WY 2003	Historic
Minimum Probable	3.3 maf (28 %)	6.1 maf (51 %)
Most Probable	10.1 maf (84 %)	12.1 maf (100 %)
Maximum Probable	17.3 maf (144 %)	18.2 maf (151 %)

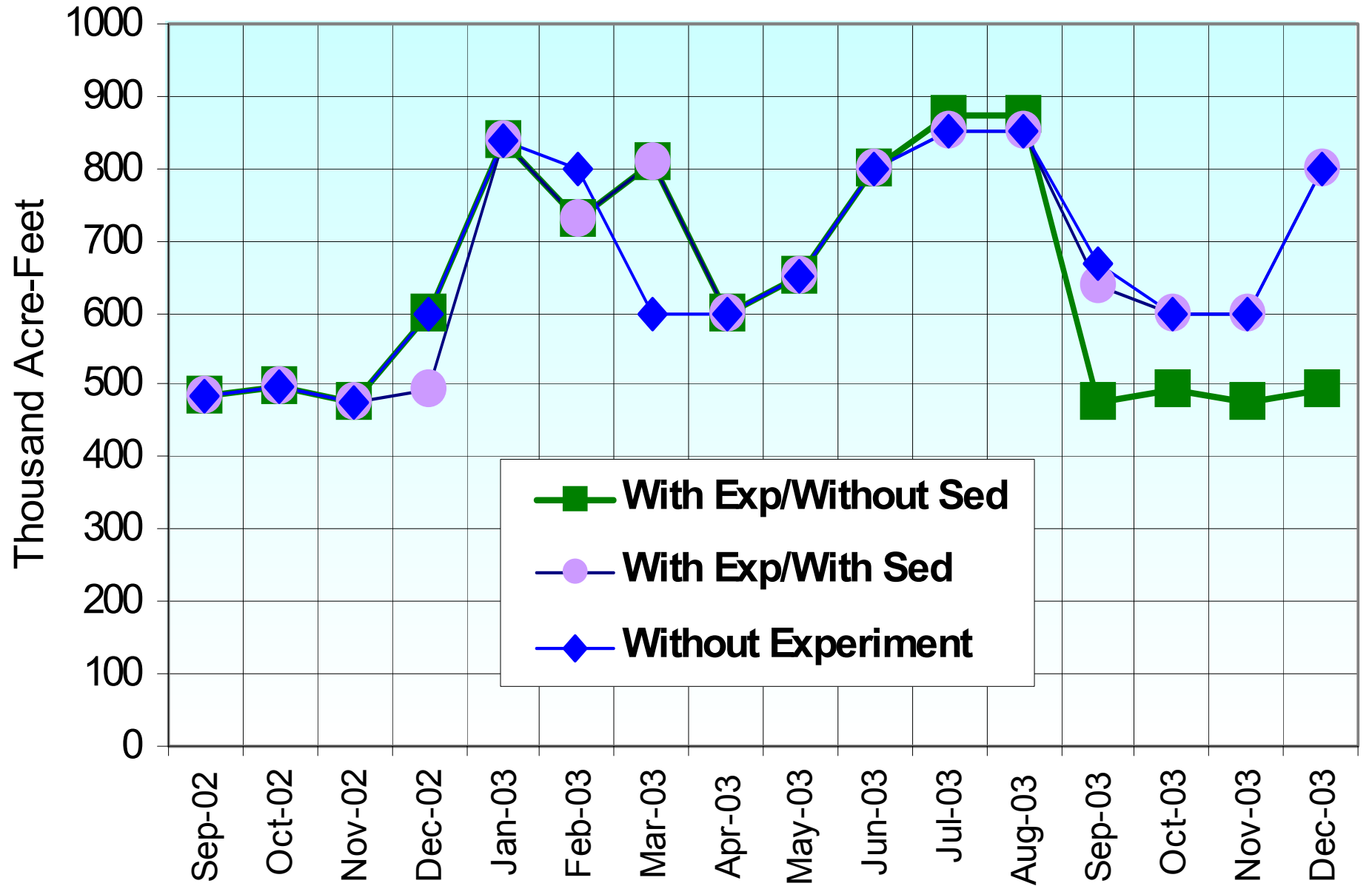
# Glen Canyon Dam Monthly Releases (CFS)

Based on November, 2002 inflow projections



# Glen Canyon Dam Monthly Releases (TAF)

Based on November, 2002 inflow projections





# Lake Powell Projected Elevations

Based on November 2002 Inflow Projections

