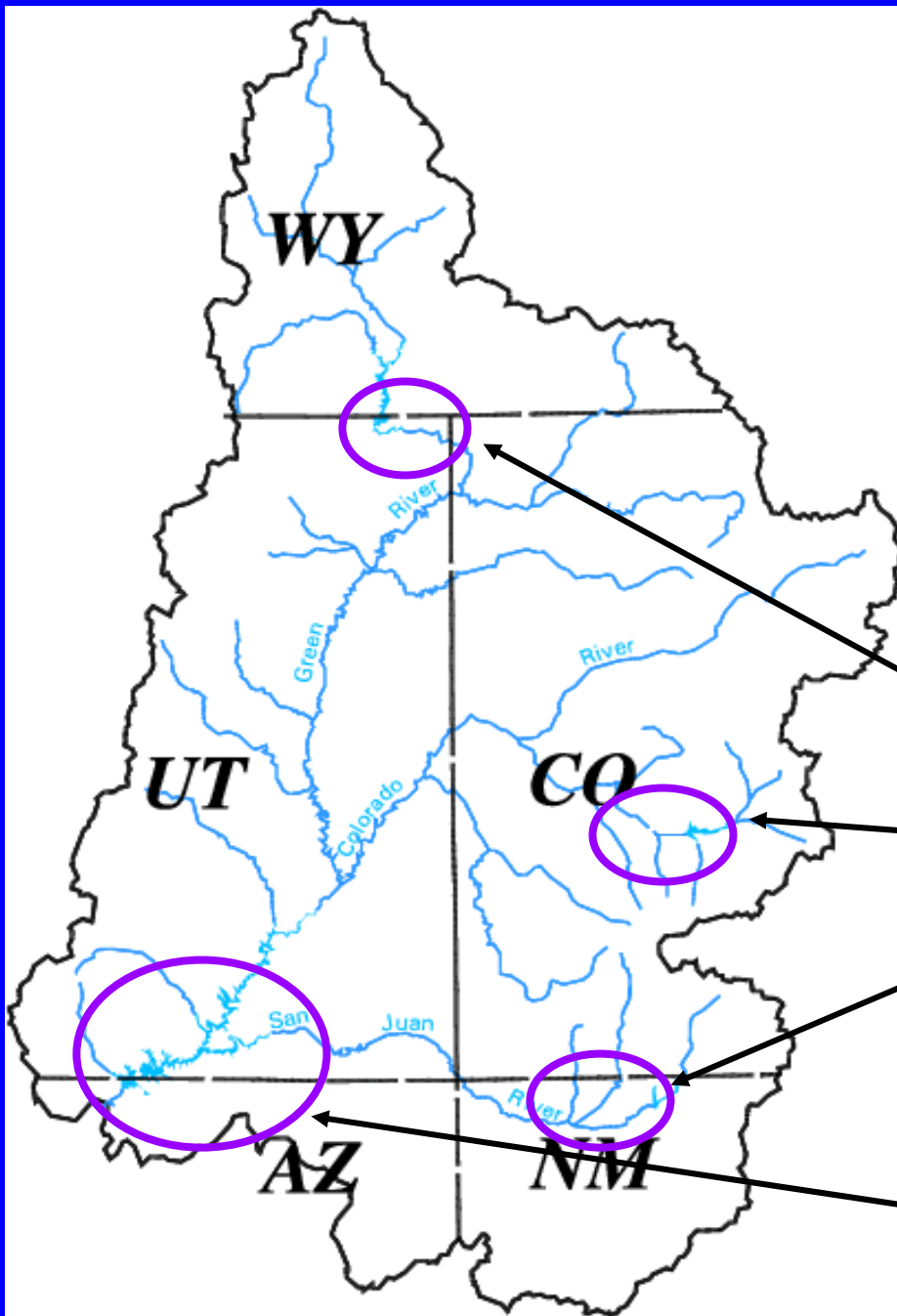


Basin Hydrology Colorado River Basin

Glen Canyon Dam
Adaptive Management Program
Technical Work Group Meeting

Phoenix, Arizona
August 15, 2002

2002 Upper Colorado April–July Unregulated Inflow



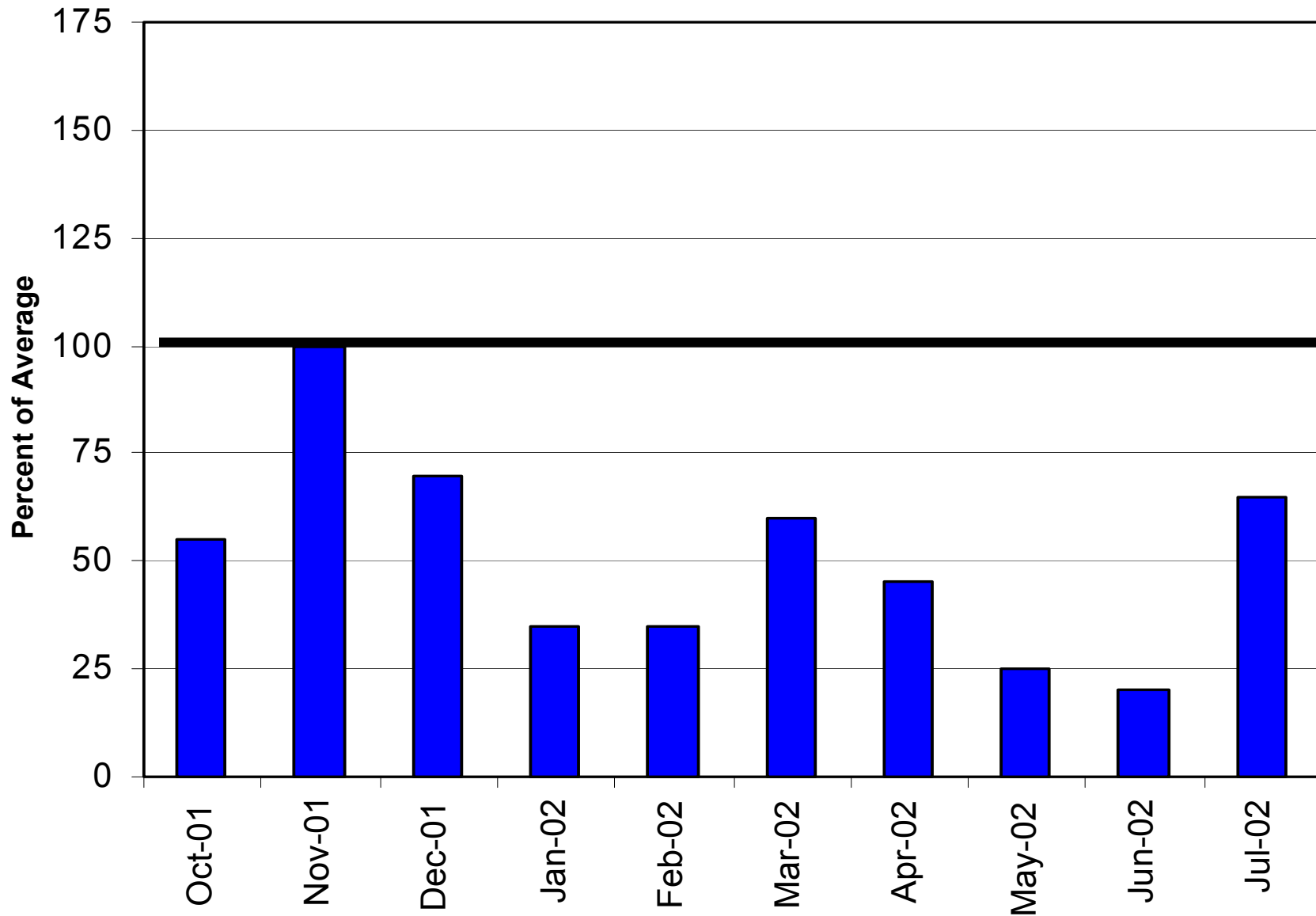
Flaming Gorge – 28 %

Blue Mesa – 22 %

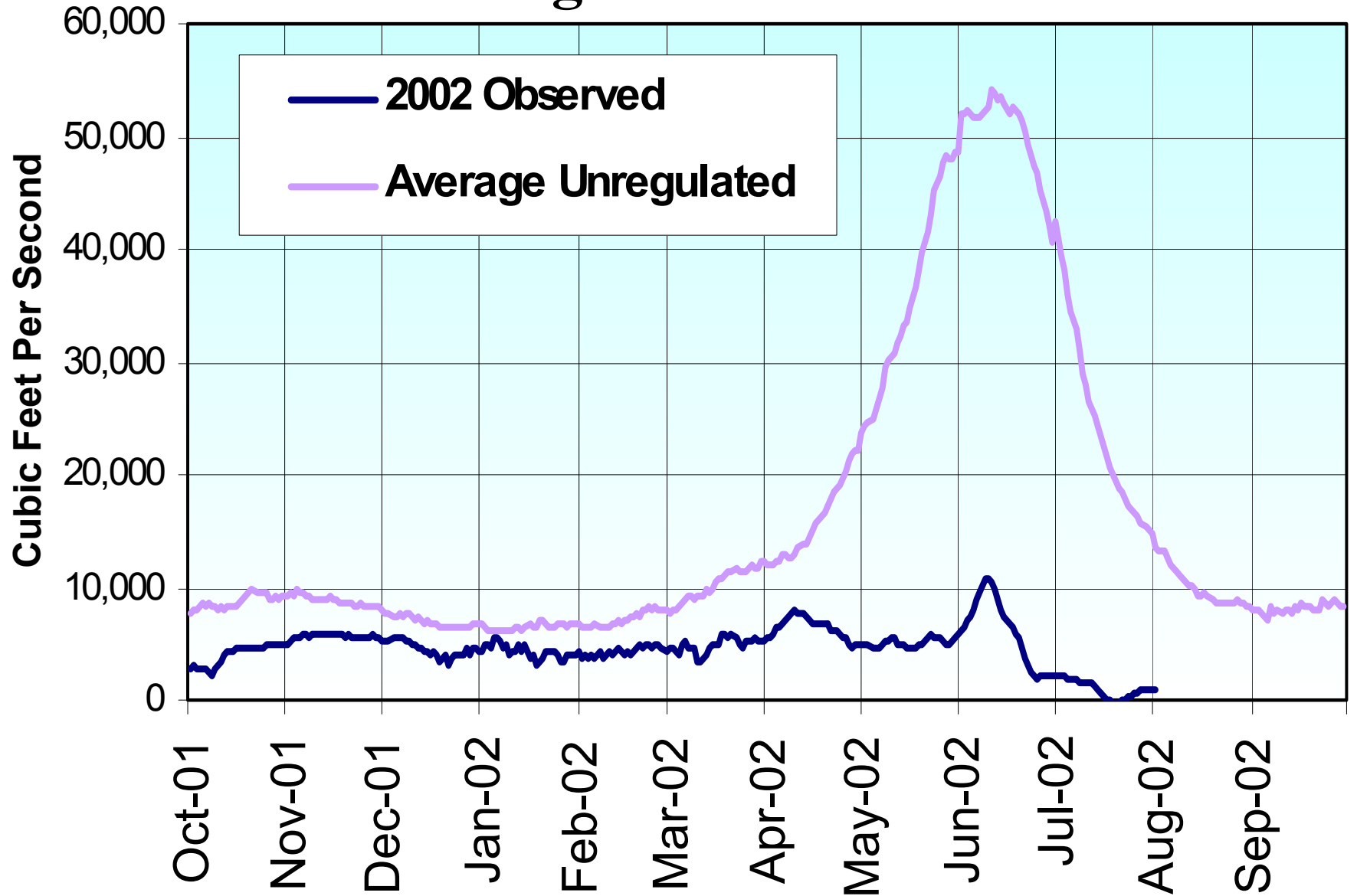
Navajo – 4 %

Lake Powell – 14 %

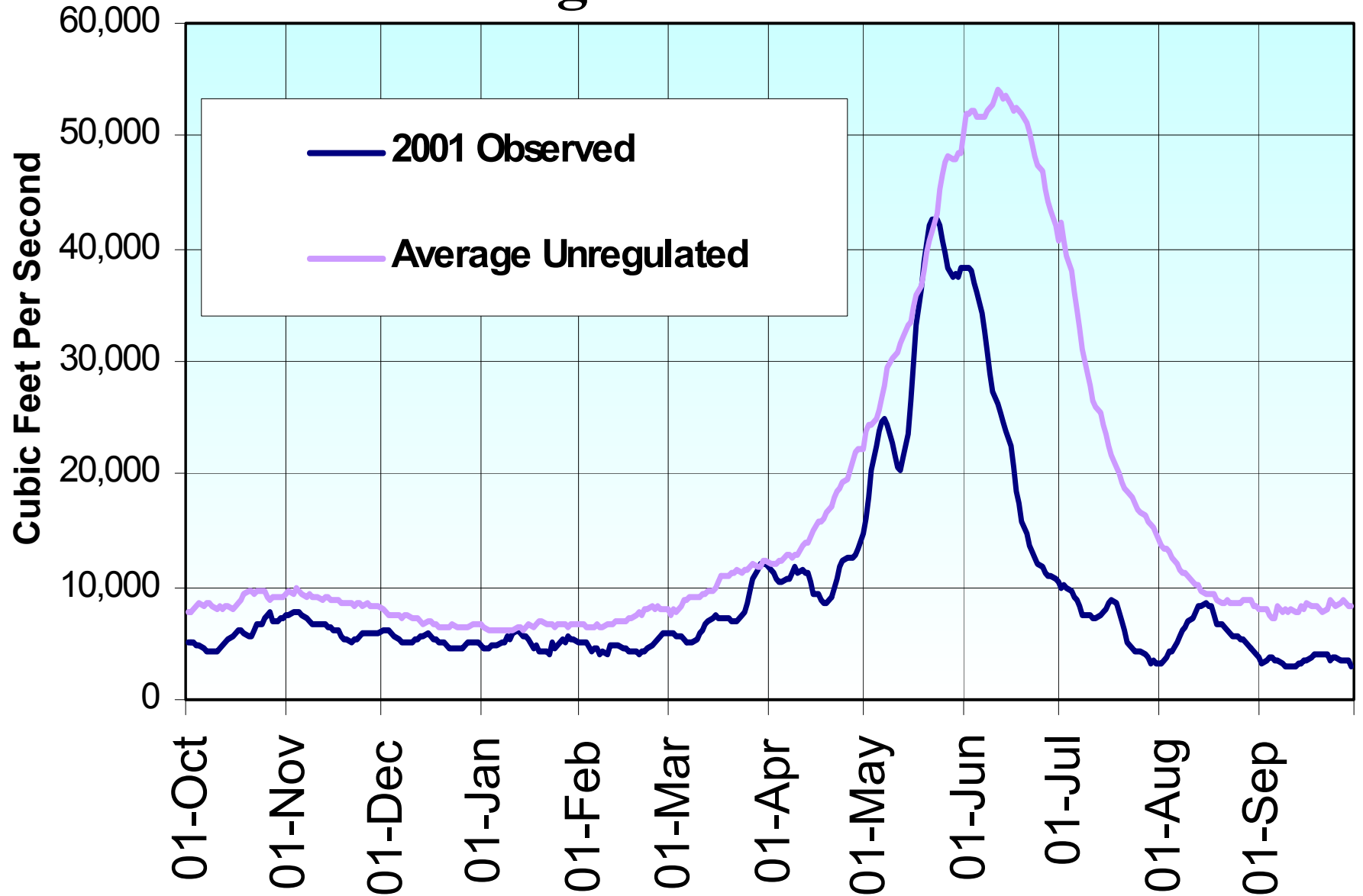
Aggregate Upper Colorado River Basin Precipitation - WY 2002



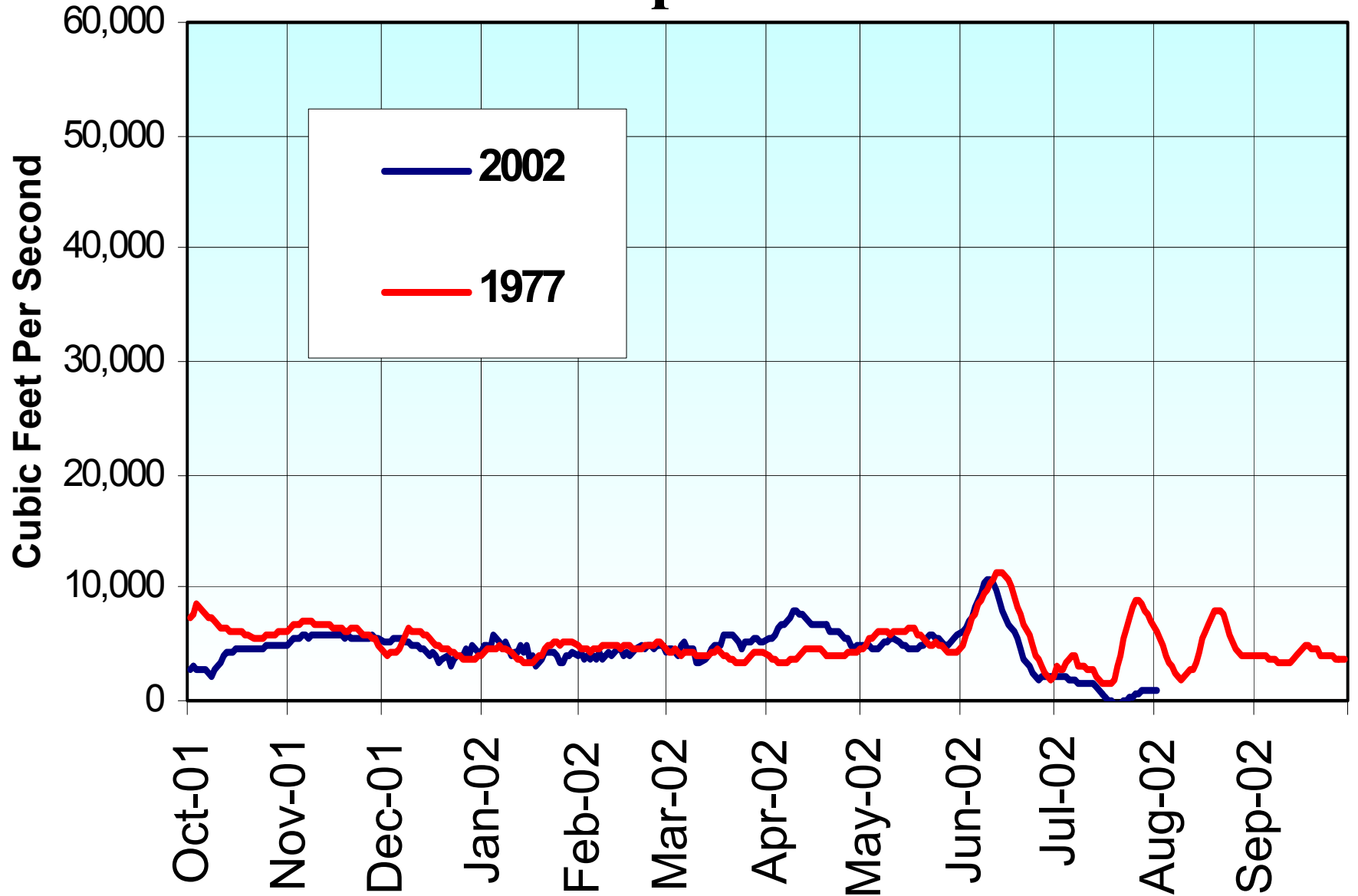
Water Year 2002 Lake Powell Unregulated Inflow



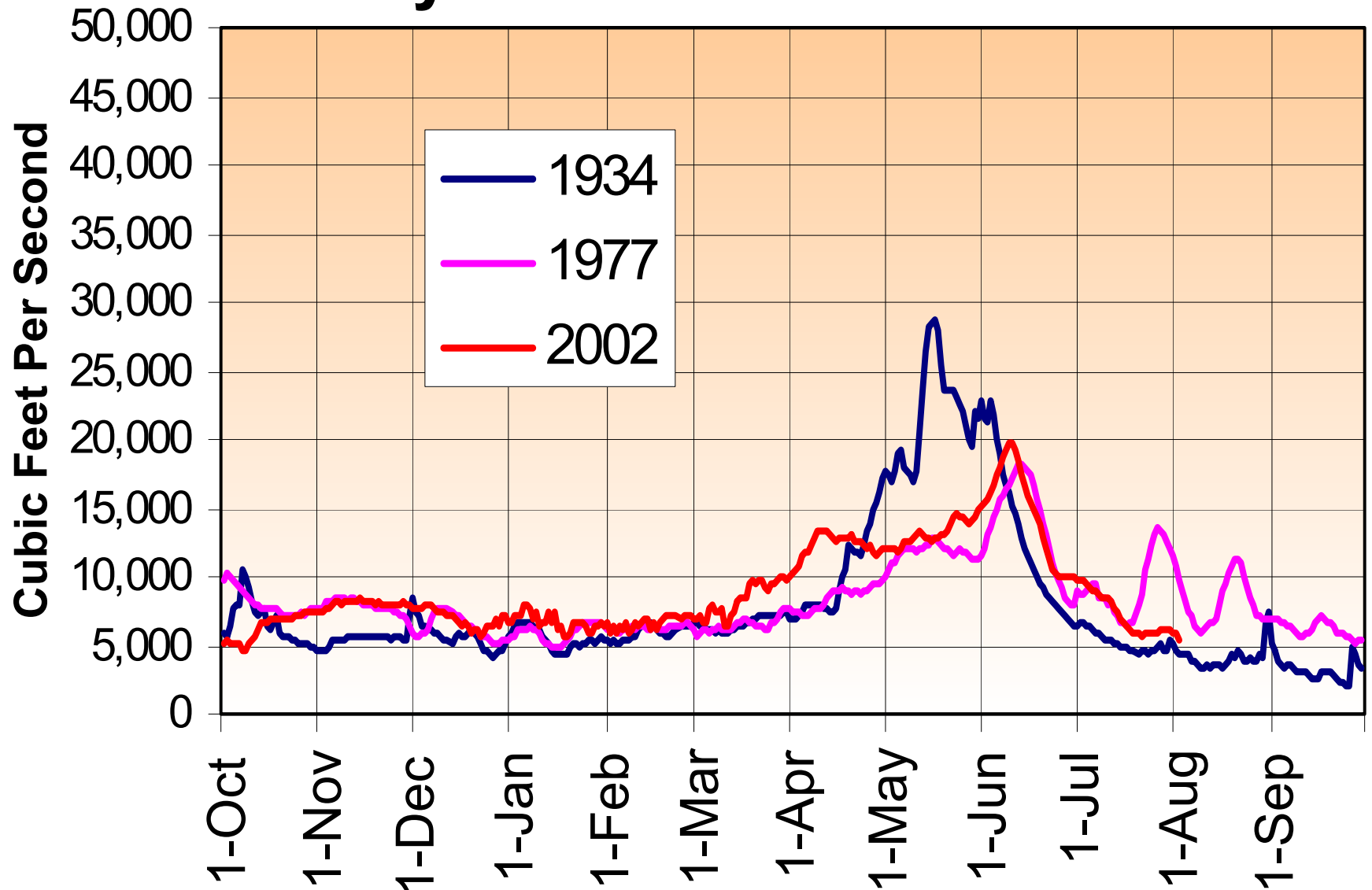
Water Year 2001 Lake Powell Unregulated Inflow



Water Year 2002 Lake Powell Inflow Compared to 1977



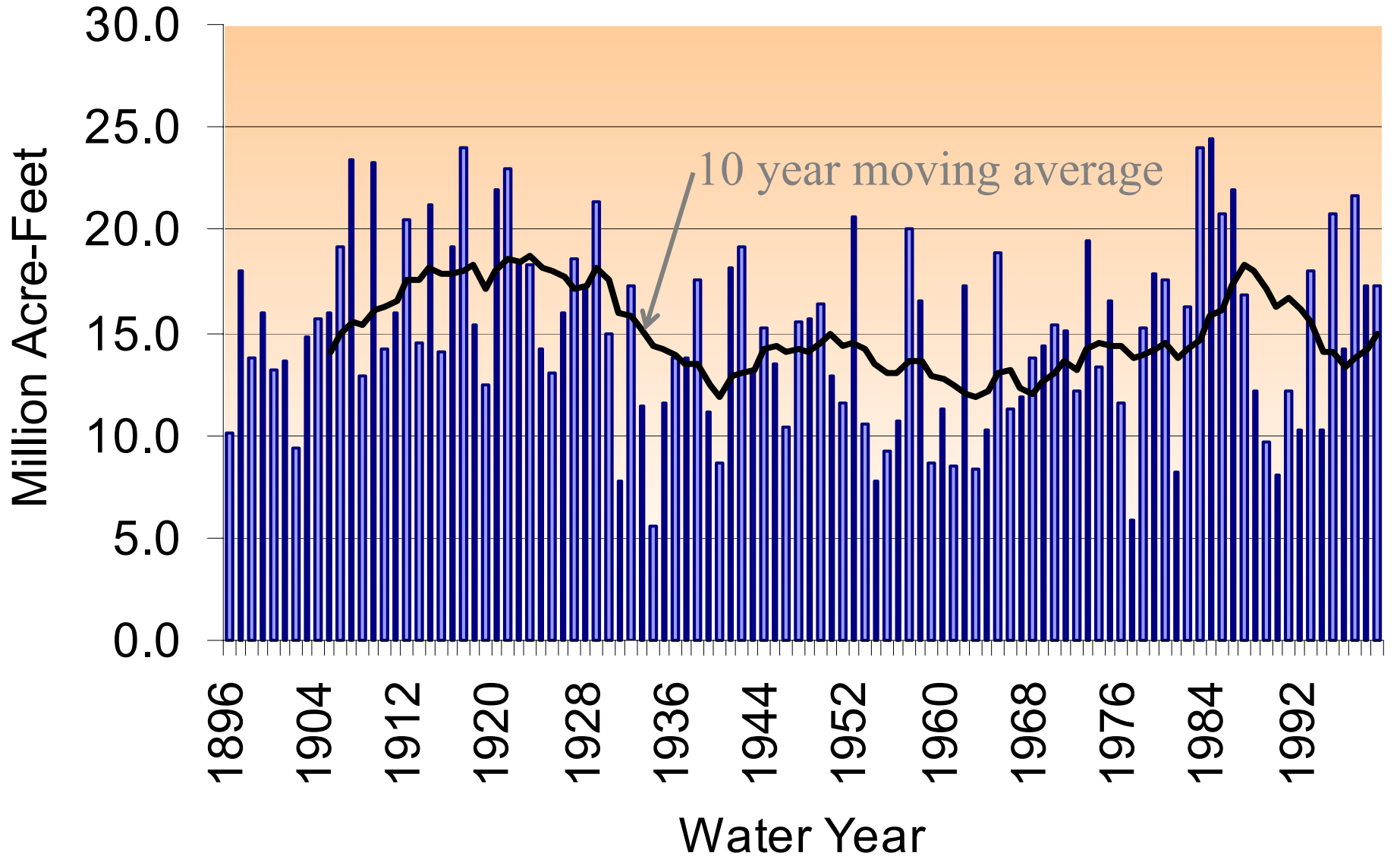
Colorado River at Lees Ferry Synthesized Natural Flows



Projected 2003 Lake Powell Inflow

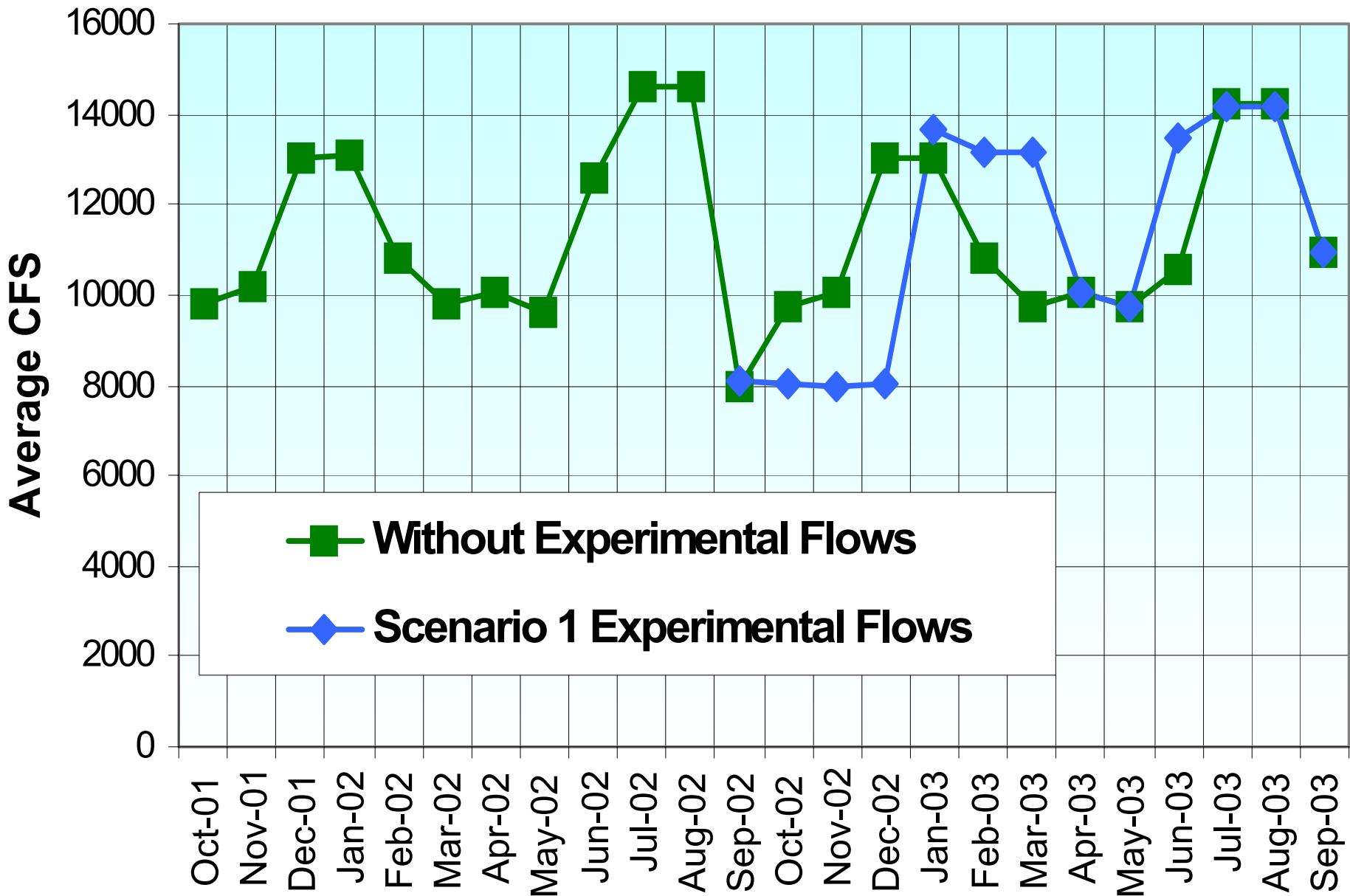
Scenario	WY 2003	Historic
Minimum Probable	4.6 maf (38 %)	6.1 maf (51 %)
Most Probable	10.4 maf (86 %)	12.0 maf (100 %)
Maximum Probable	16.2 maf (134 %)	18.2 maf (151 %)

Natural Flow at Lee Ferry, Arizona

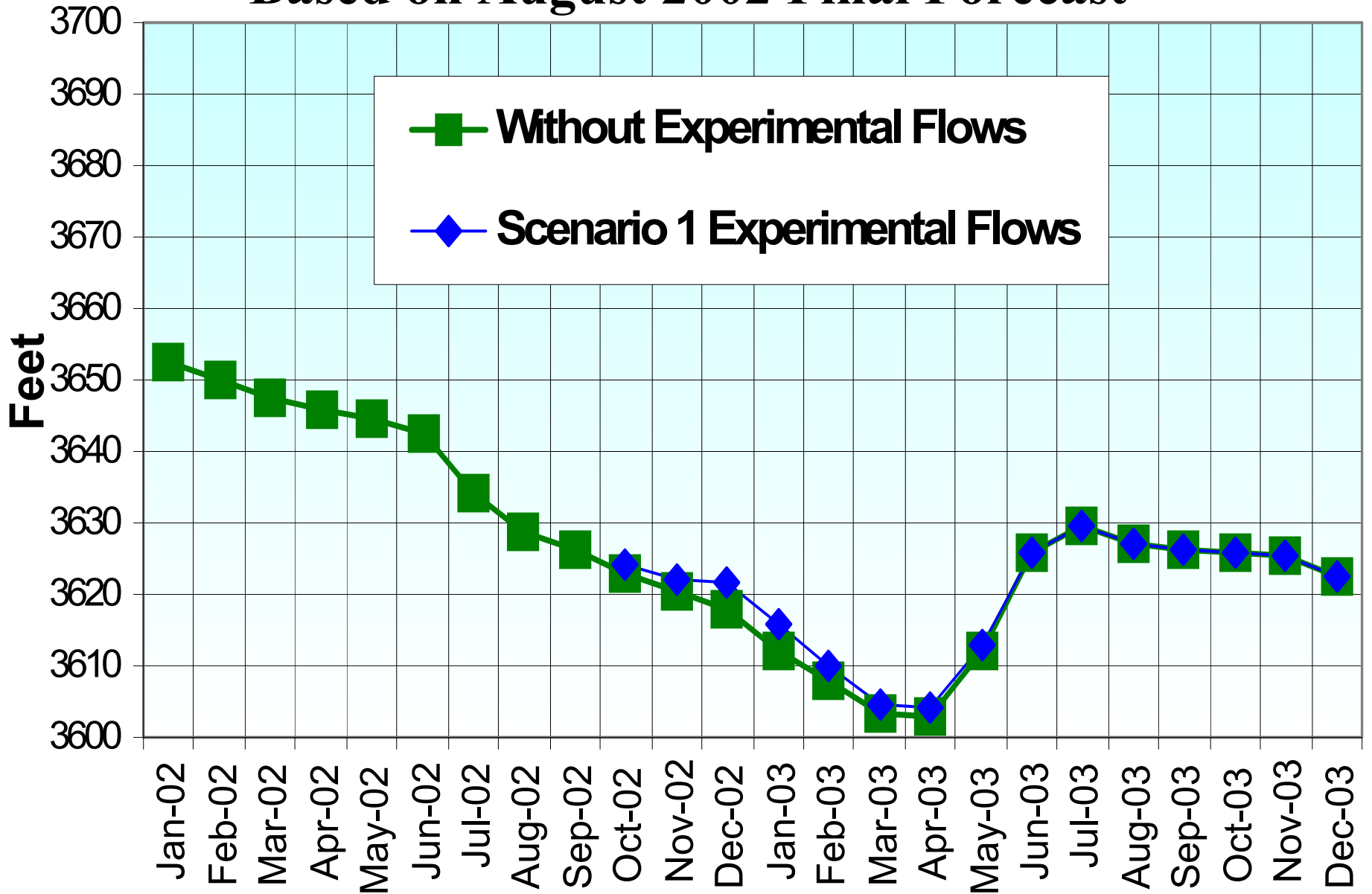


Glen Canyon Dam Average Monthly Releases

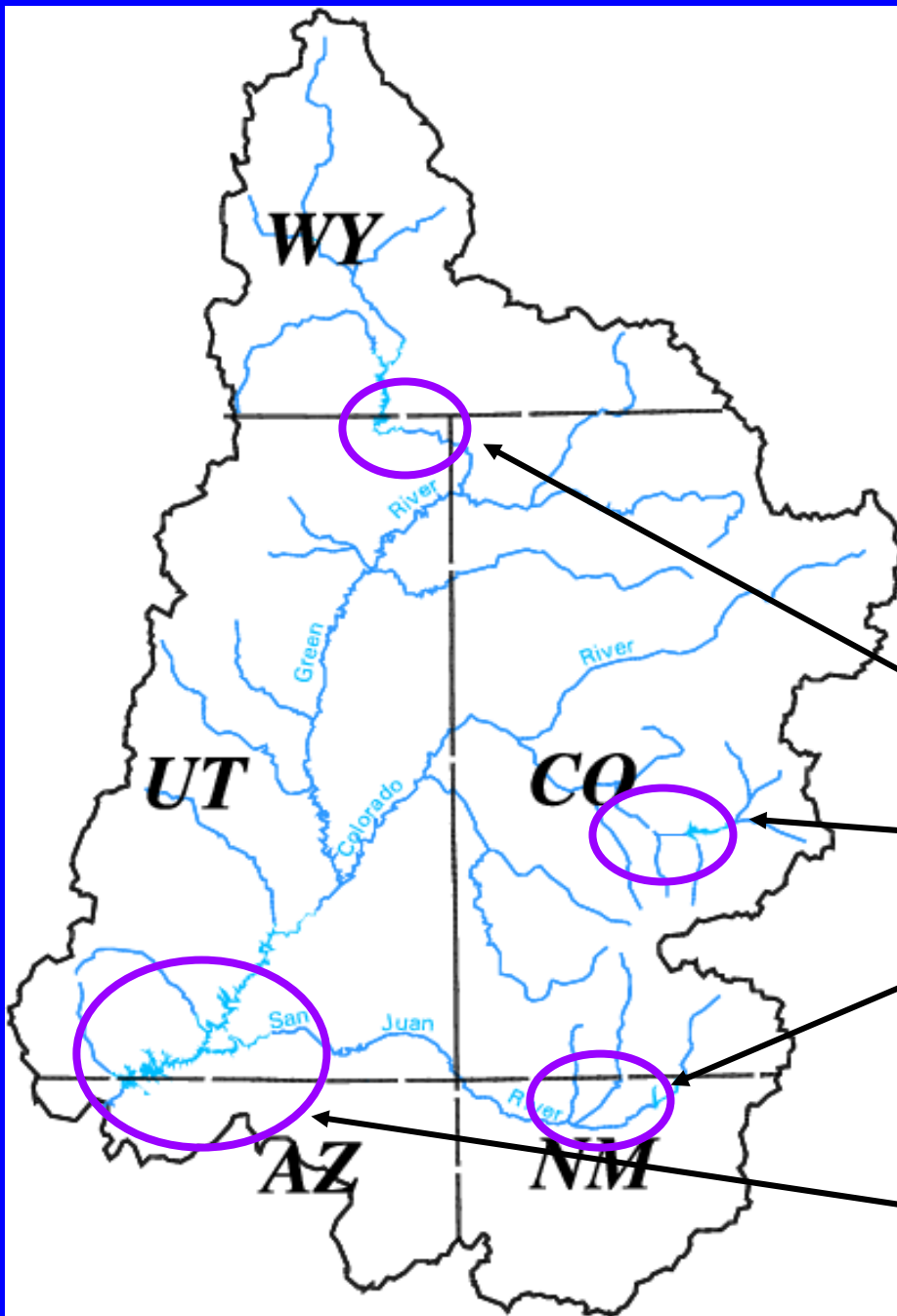
Most Probably Hydrology (based on August 2022 Final Forecast)



Lake Powell Water Surface Elevations Based on August 2002 Final Forecast



2002 Upper
Colorado
April–July
Unregulated
Inflow



Flaming Gorge – 336 taf

Blue Mesa – 156 taf

Navajo – 33 taf

Lake Powell – 1,115 taf