

# Integrated Water Quality Program

Five Year Plan  
FYs 2002-2007

# History

- 36 year period of reservoir sampling (Lake Powell)
- GCMRC Black-White-Grey (1998)
  - \$300,000/yr (USBR)
- IWQ Protocol Evaluation Panel (2000-2001)
  - Modeling, Increase Downstream Emphasis
- GCMRC PEP Response
- GCMRC 5 Year IWQP Plan

# PEP Recommendations

- Shift emphasis to downstream-overtime
- Use modeling to increase efficacy
- Integrate w/other GCMRC programs
- Develop proactive sampling strategy
- Improve WQ MO's & IN's (w/TWG)
- Retain Glen Canyon forebay station
- Provide info to stakeholders in timely manner

# Plan Outline

- Introduction & Background
- Water Quality Monitoring Plan
  - Existing Sampling & Revisions
  - Reservoir Modeling
- Glen Canyon Tailwater & Downstream
  - Needs Assessment, Model Framework
- Database Development & Availability
- R & D Activities
  - Inflow Sampling, Seabird Evaluation

# Modifications to Reservoir Sa

Oct-01    Oct-02    Oct-03    Oct-04    Oct-05

Inflow Sampling (upstream gage activation) - - -

Model Needs Assessment

Assessment of Existing Data

Comparison of Inflows with Upstream Gages

Development of Revised Inflow Sampling Plan

Implement Inflow Sample Collection

Reservoir Sampling Modifications - - -

Model Needs Assessment

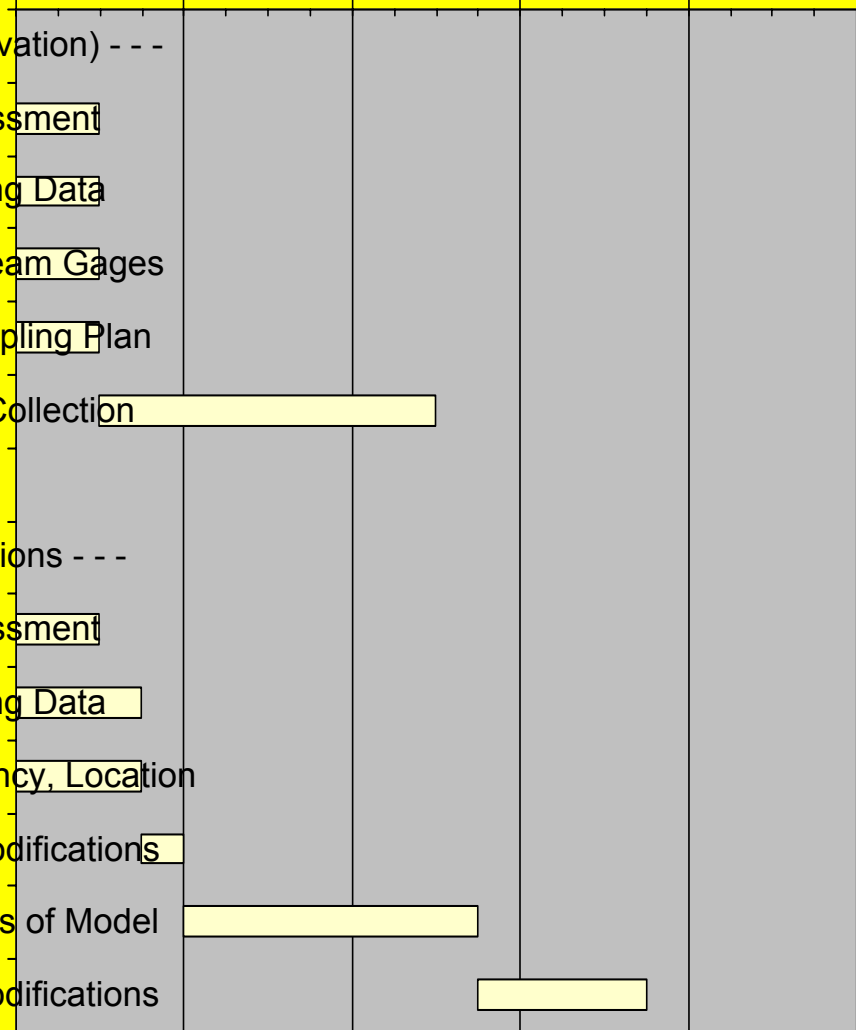
Assessment of Existing Data

Sensitivity Analyses of Parameters, Frequency, Location

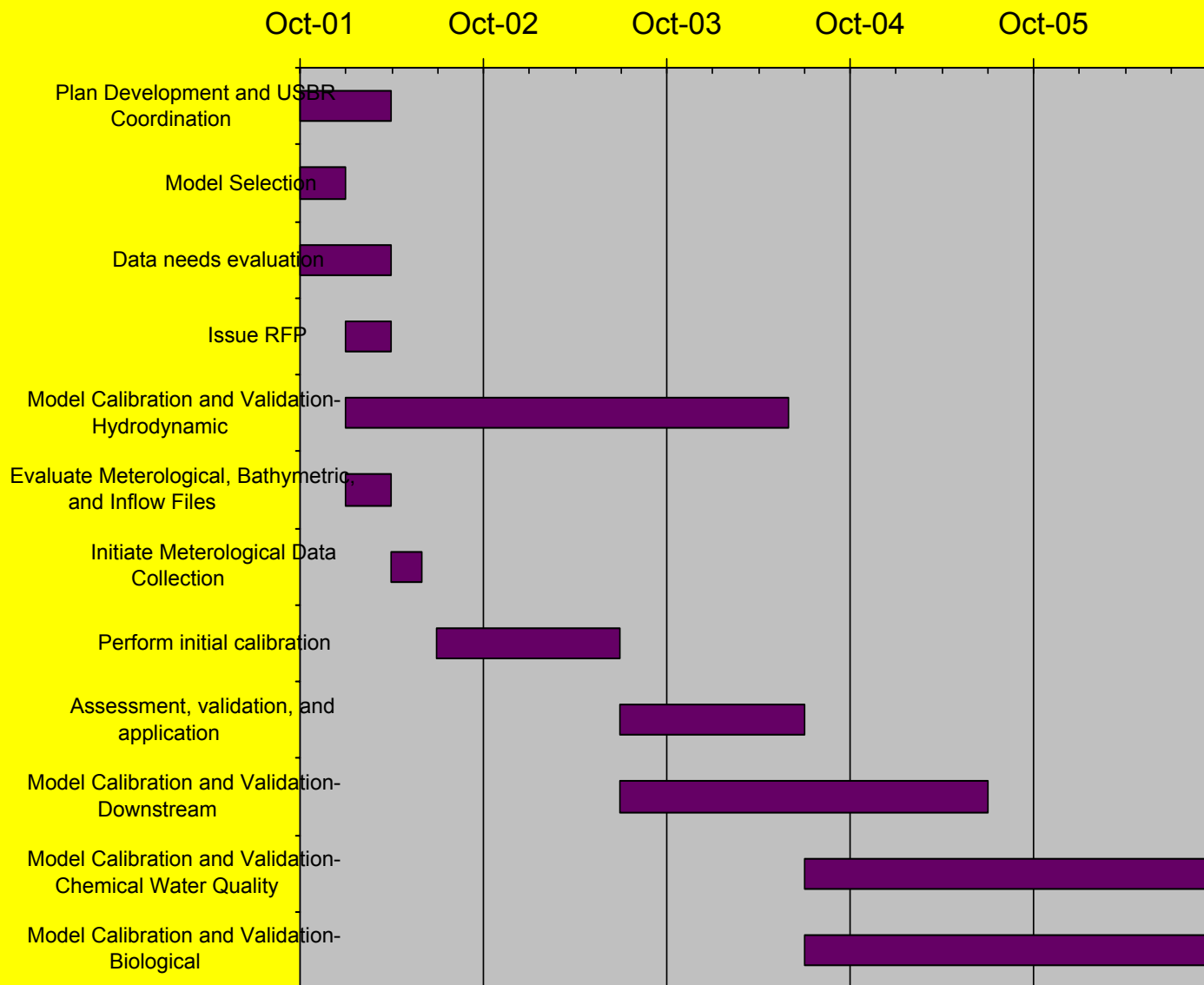
Develop and Implement Initial Modifications

Determine Simulative Capabilities of Model

Develop and Implement Final Modifications



# IWQP Modelling Activ



# Seabird Evaluation

Oct-01

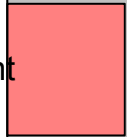
Oct-02

Oct-03

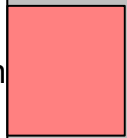
Oct-04

Oct-05

Historical Data Assessment



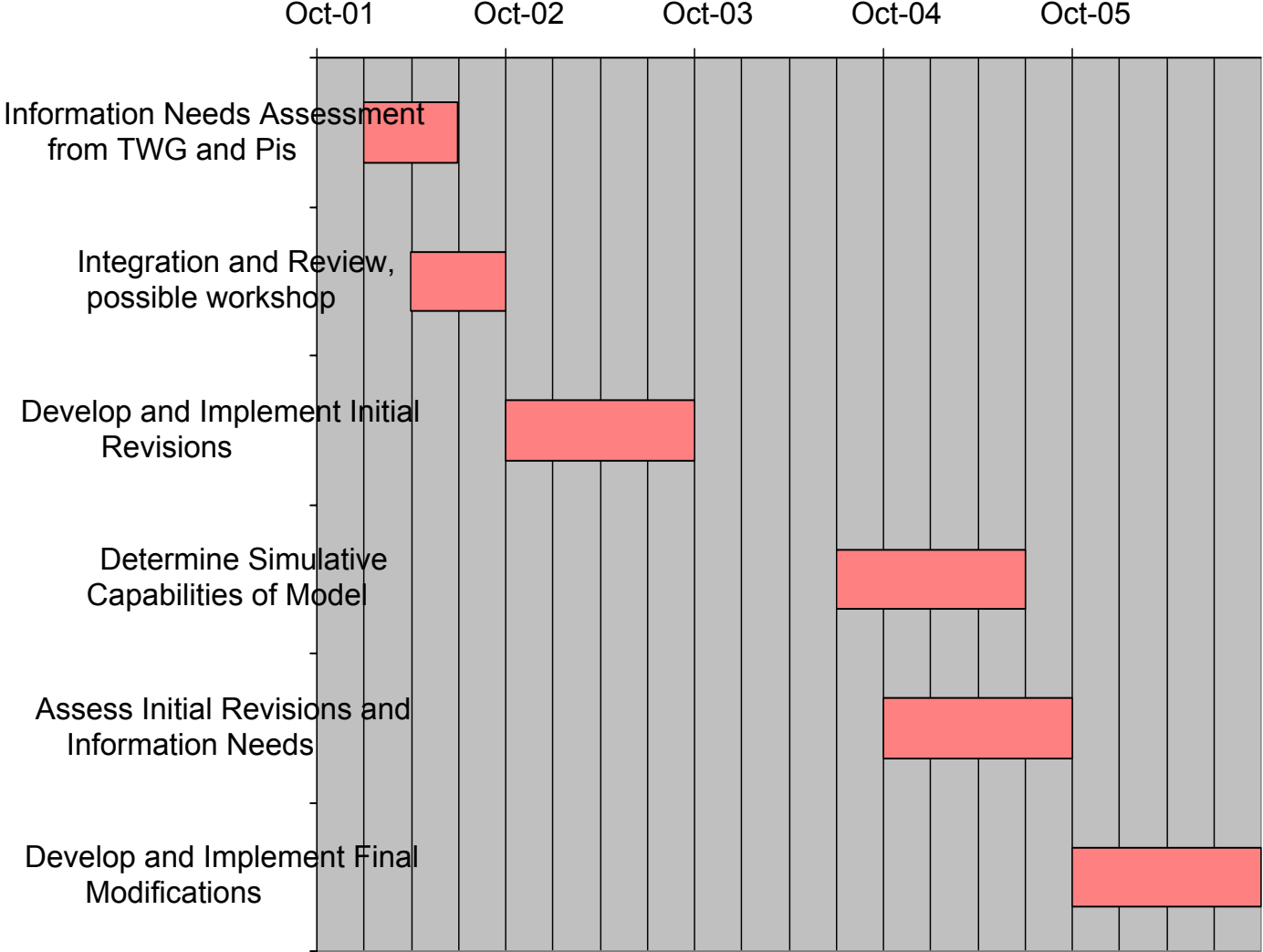
Field Demonstration



Final Evaluation



# Downstream Monitoring I





# Next Steps

- TWG review IWQP Draft Plan
  - Provide comments to GCMRC by July 1?
- TWG review Final IWQP in August?
- TWG may recommend adoption of plan to AMWG