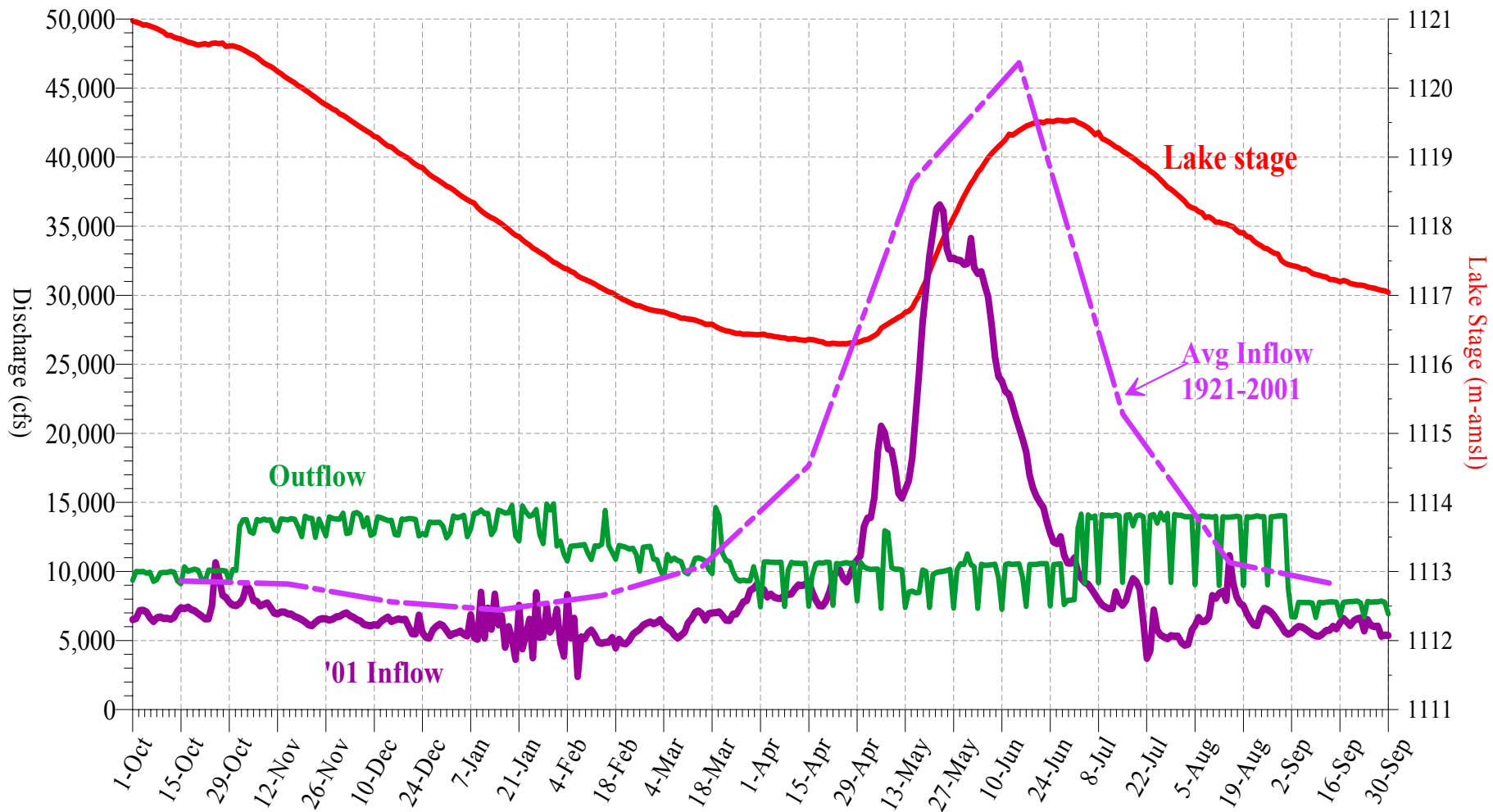
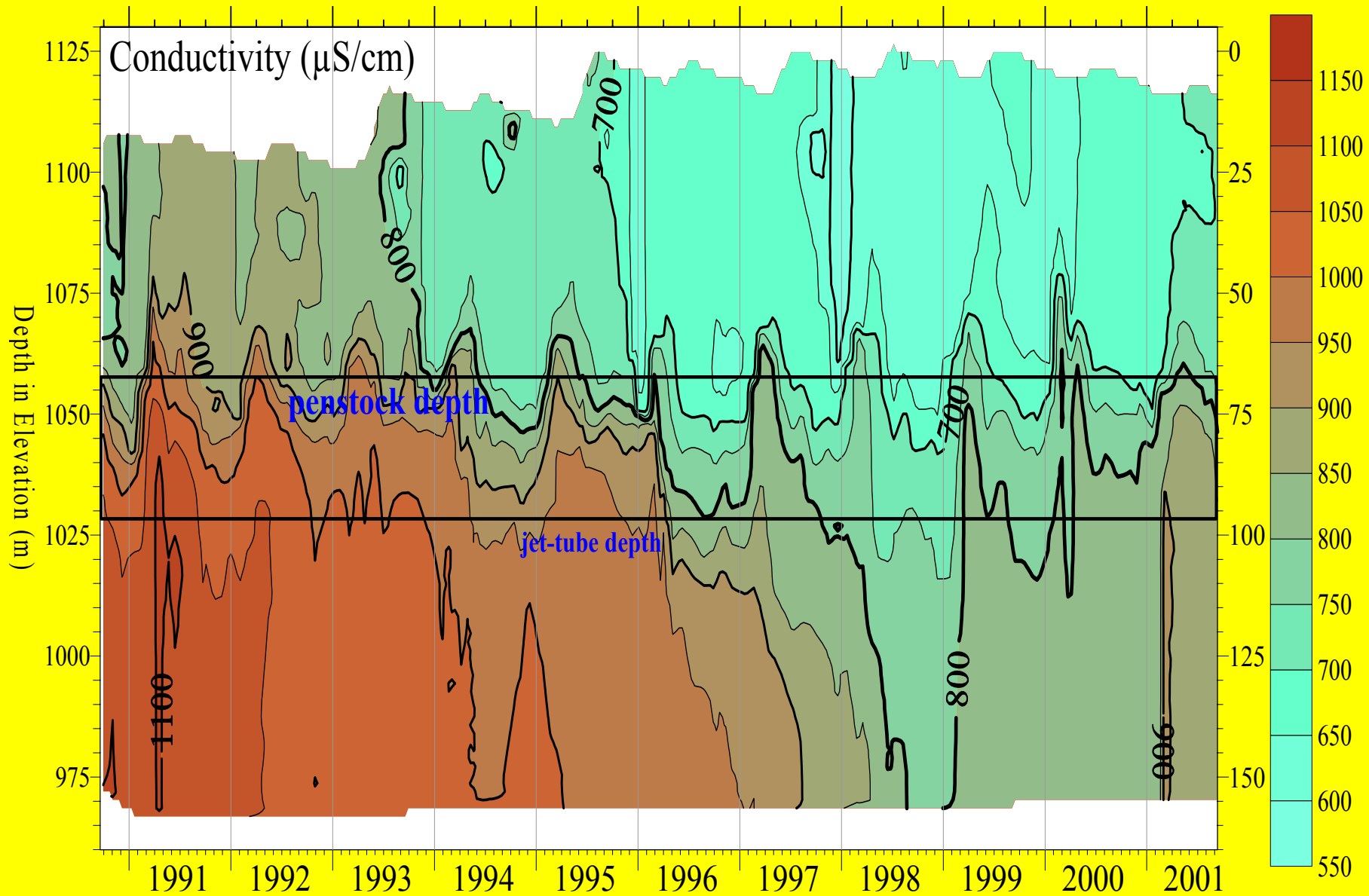


Monitoring Results 2001

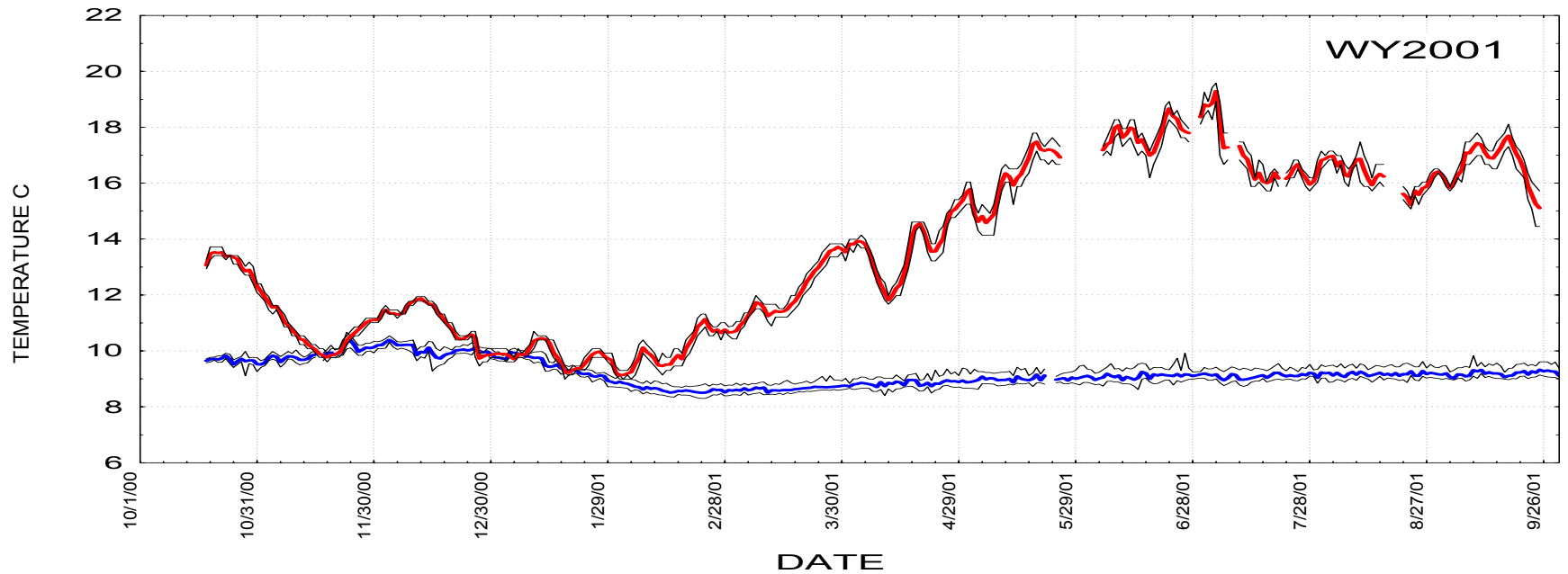
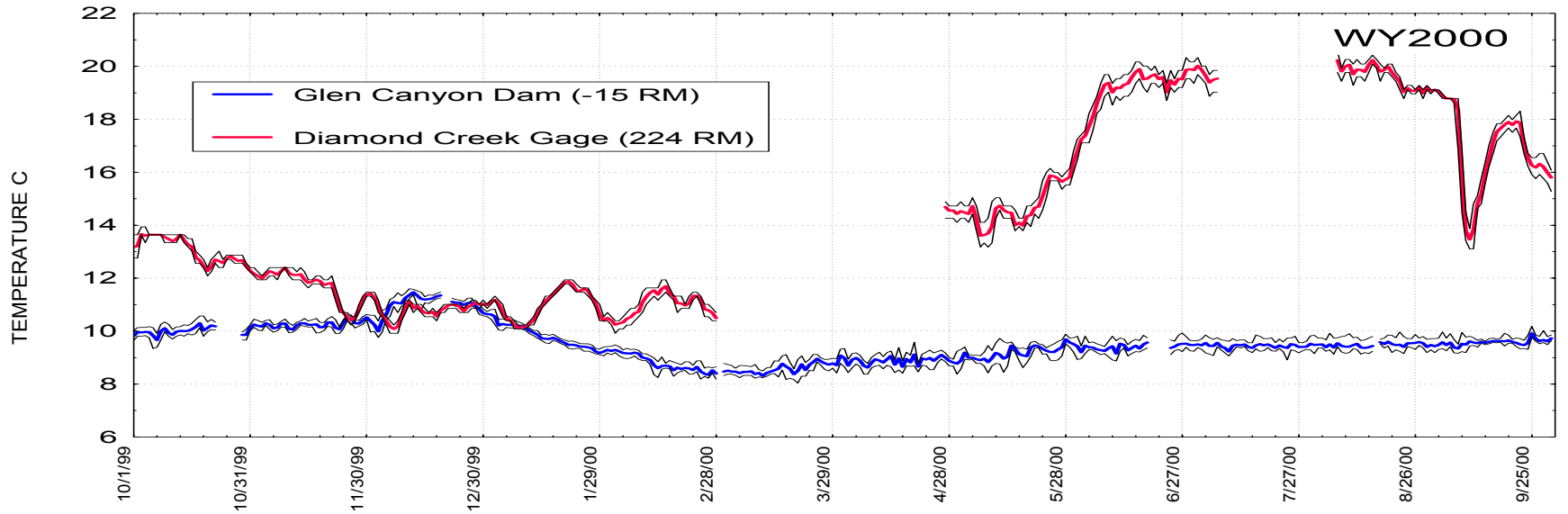
Selected and Preliminary Results

TWG Meeting May 17, 2002



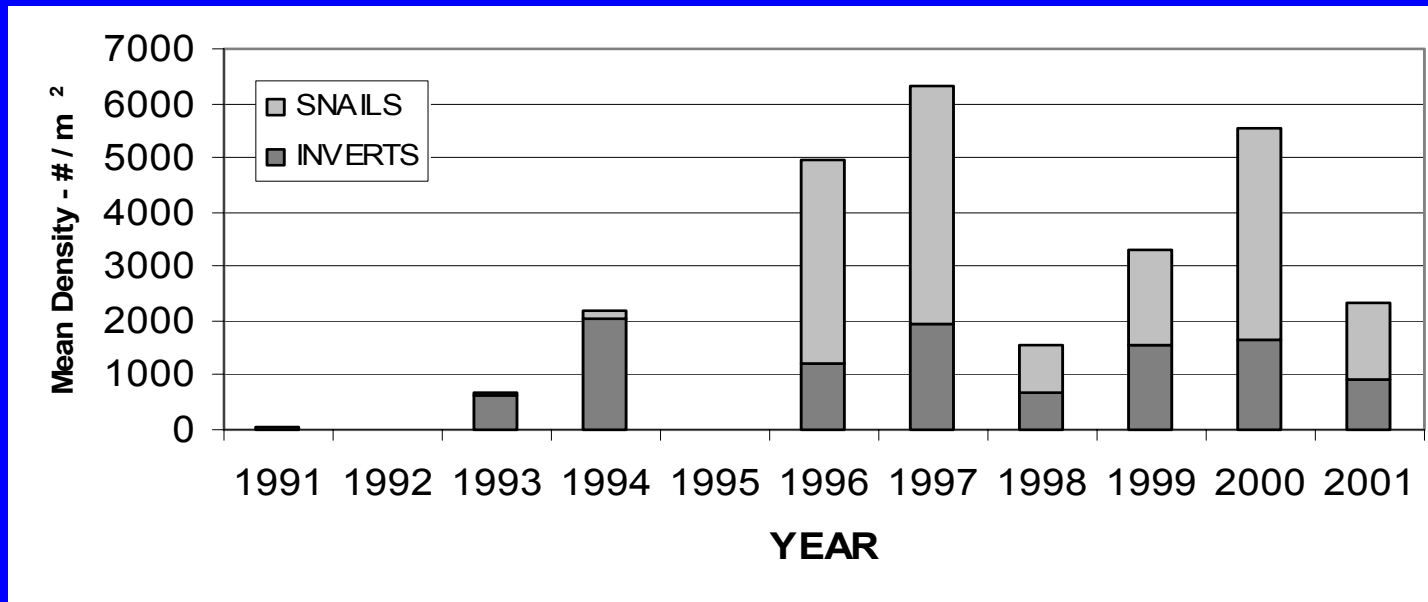
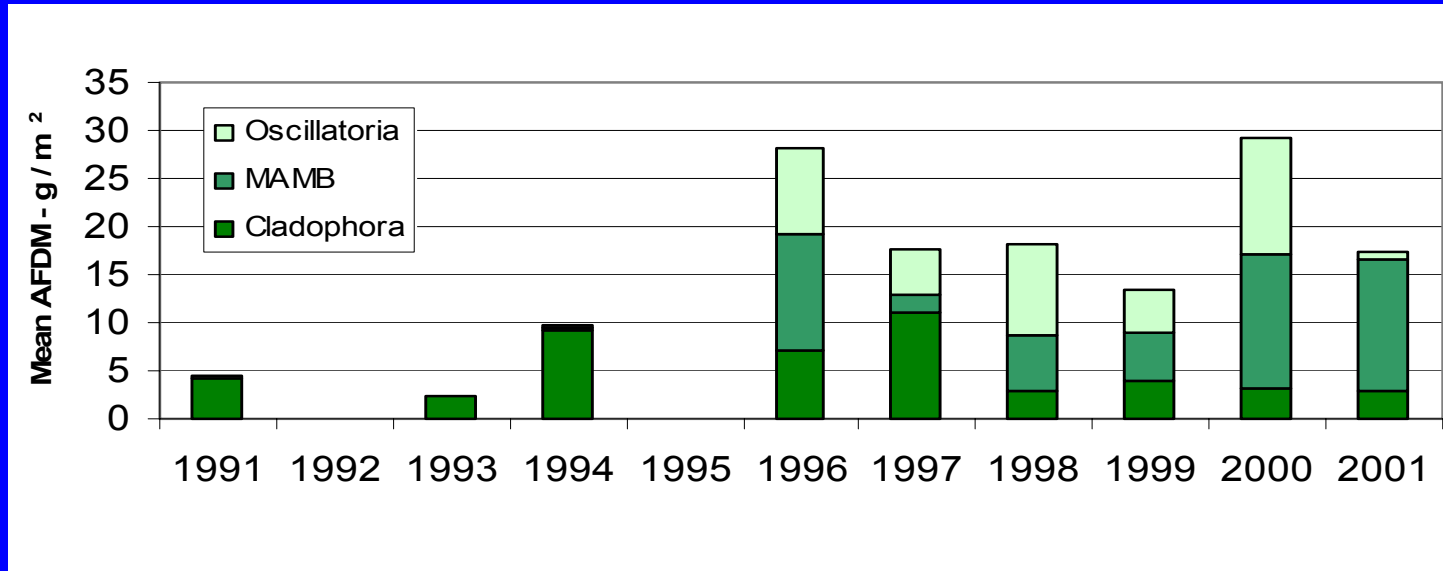


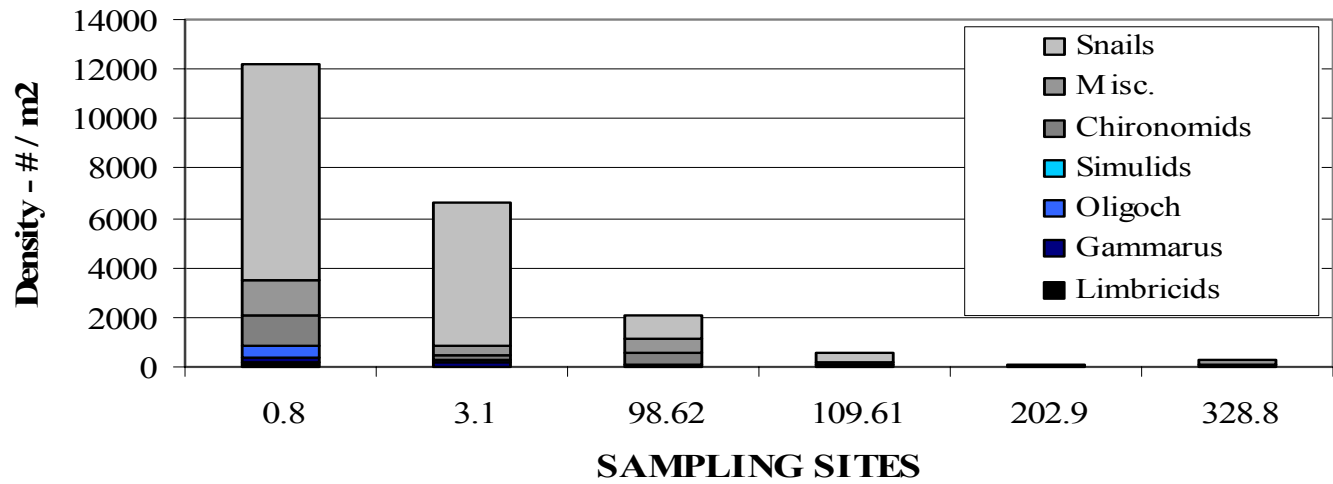
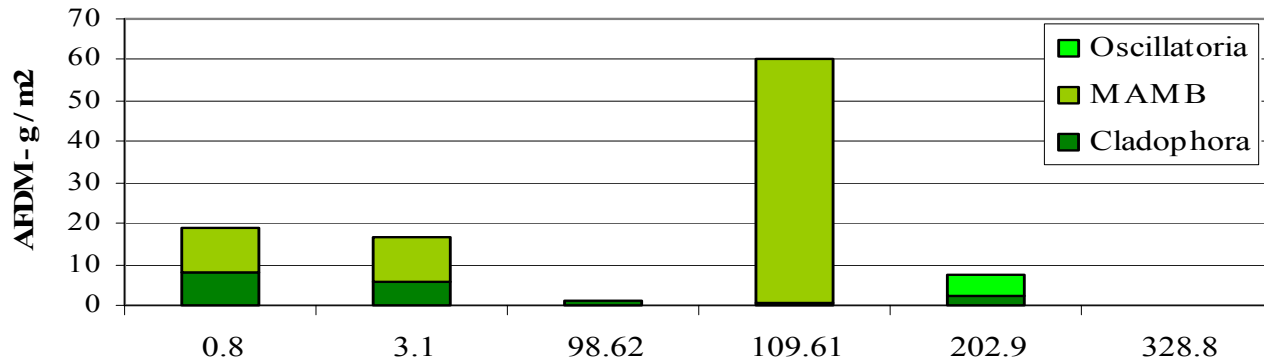
Colorado River Mainstem Daily Temperature

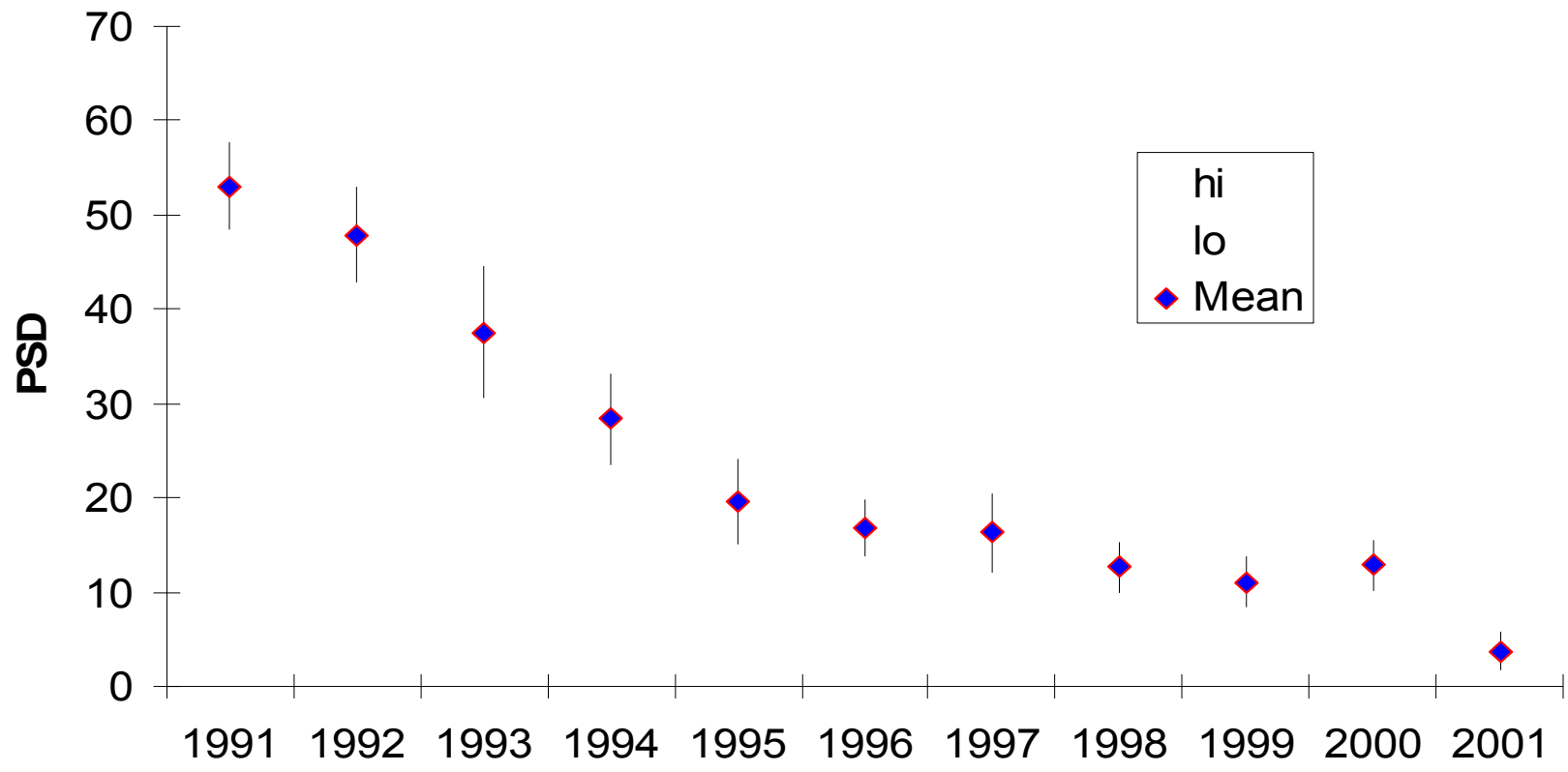


PHYTOBENTHIC BIOMASS

Colorado River, Glen and Grand Canyons

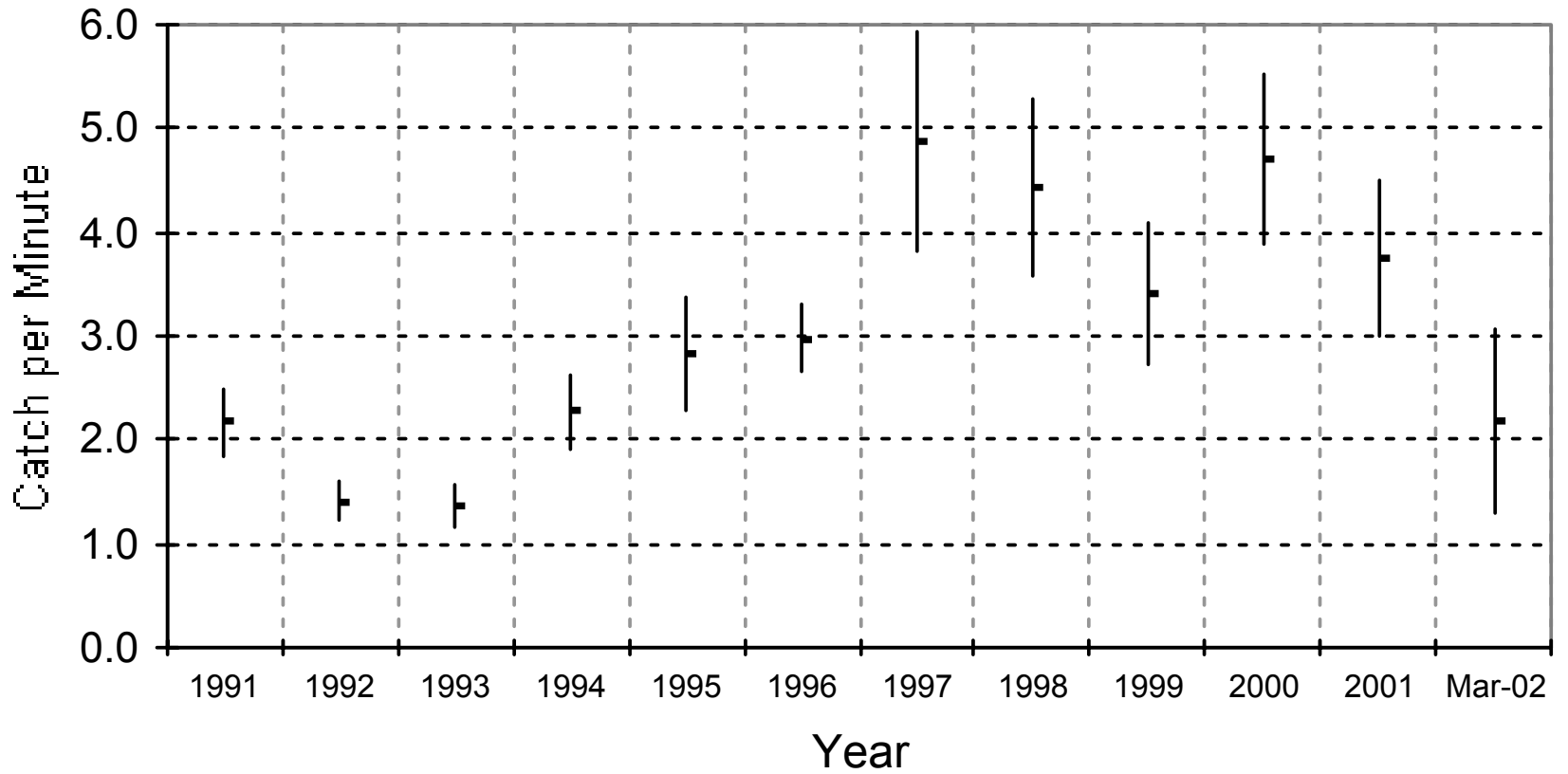




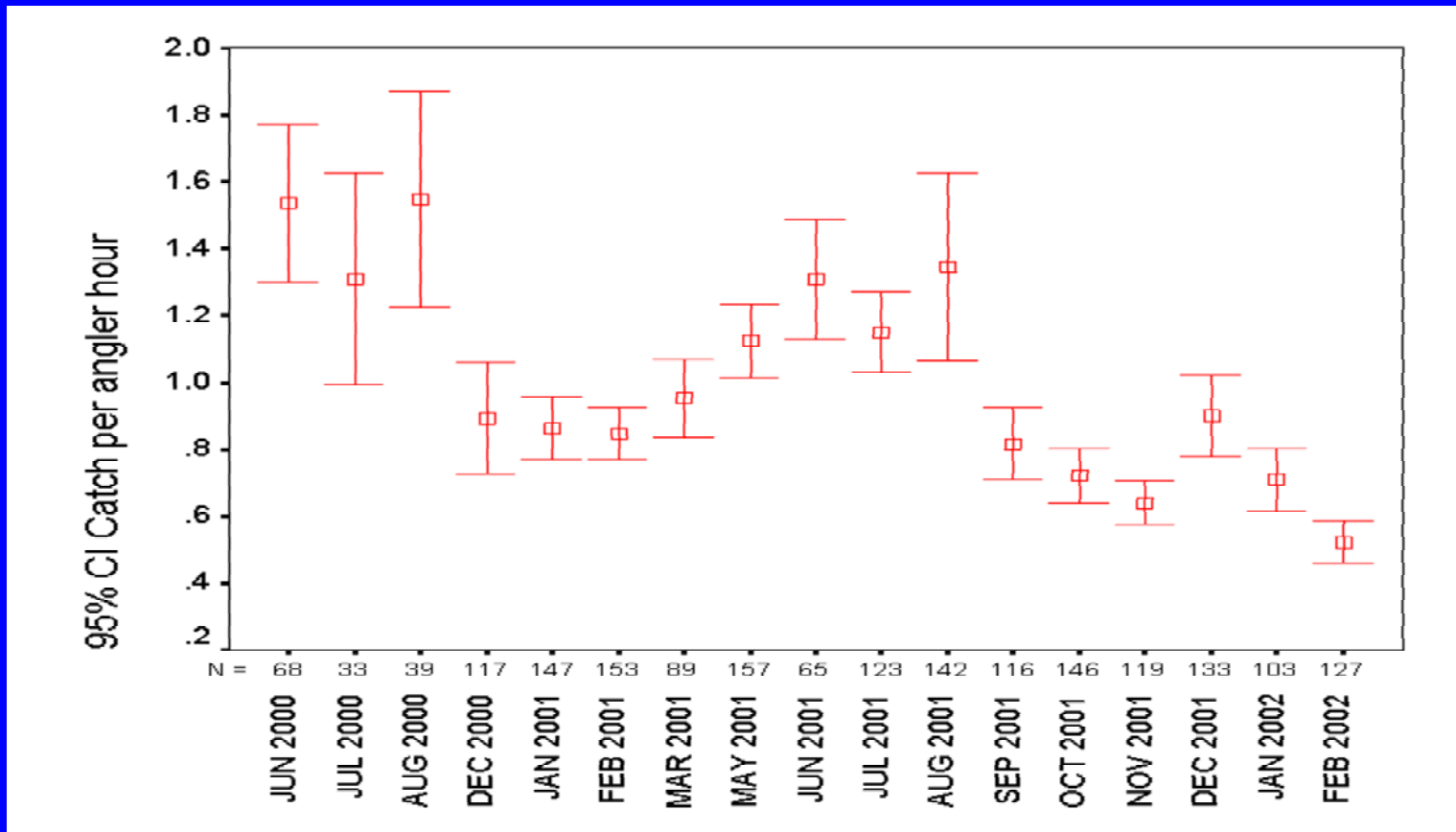


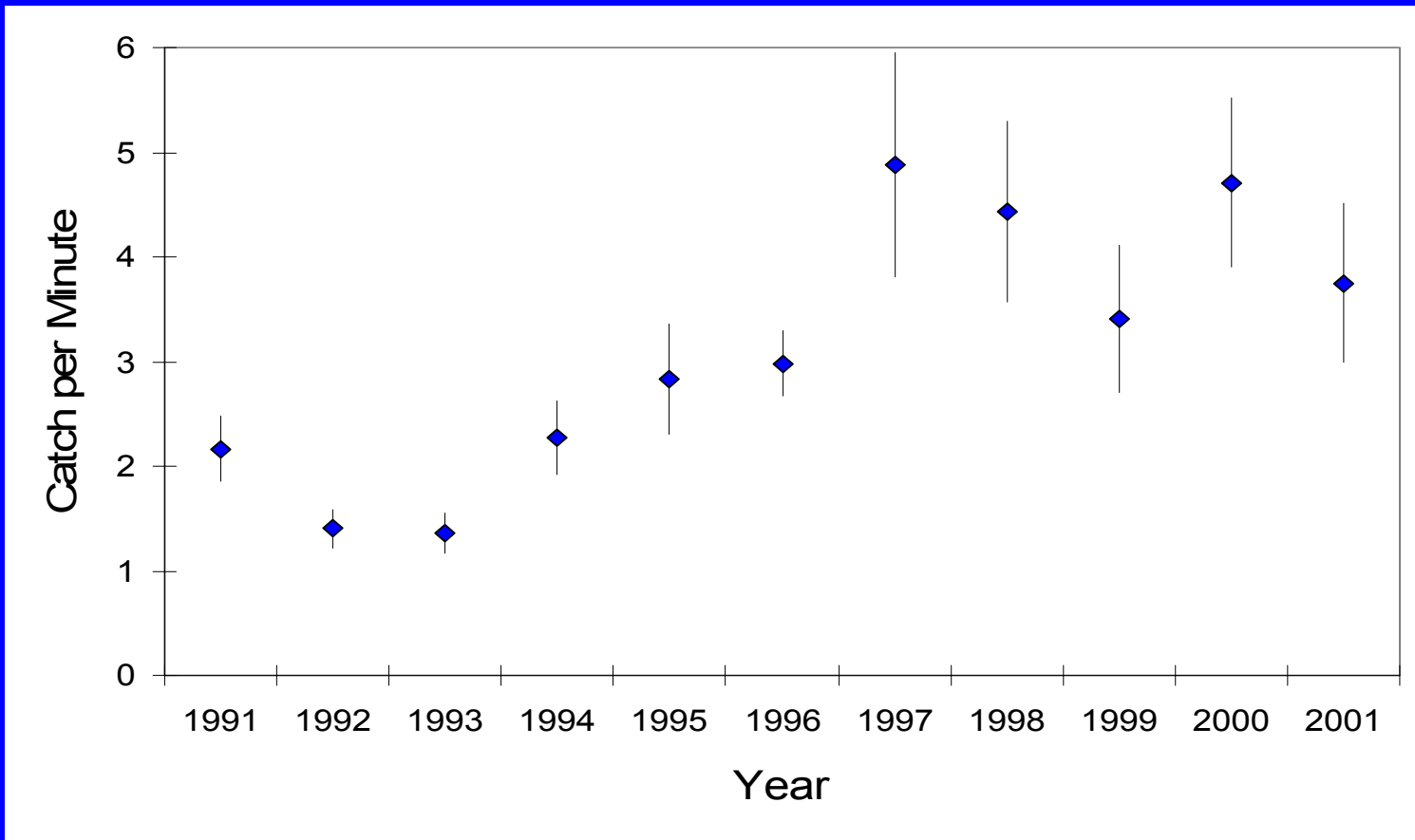
Proportional Stock Density for RBT at Lees Ferry

Mean Catch per minute and 95% Confidence, Interval Lees Ferry Electrofishing 1991 - March 2002 (Coffelt Boat only).

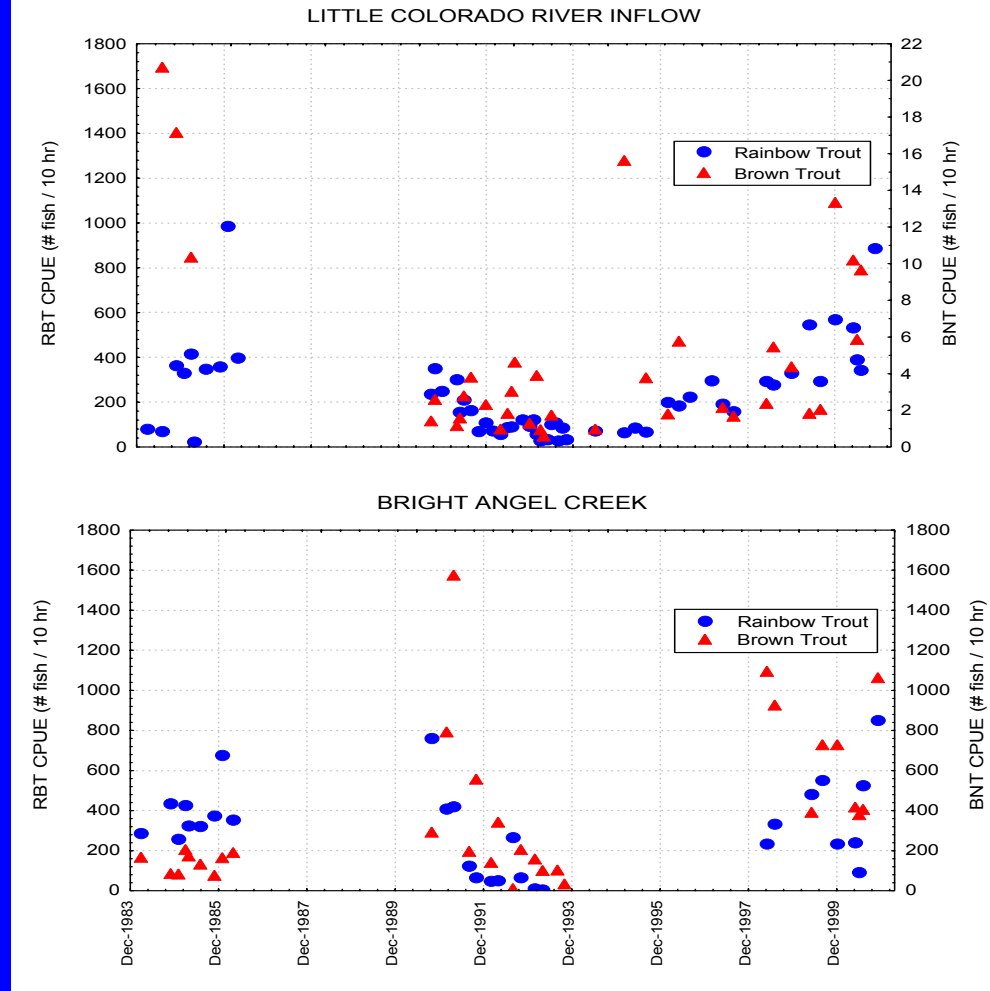


Angler Catch Rates at Lees Ferry

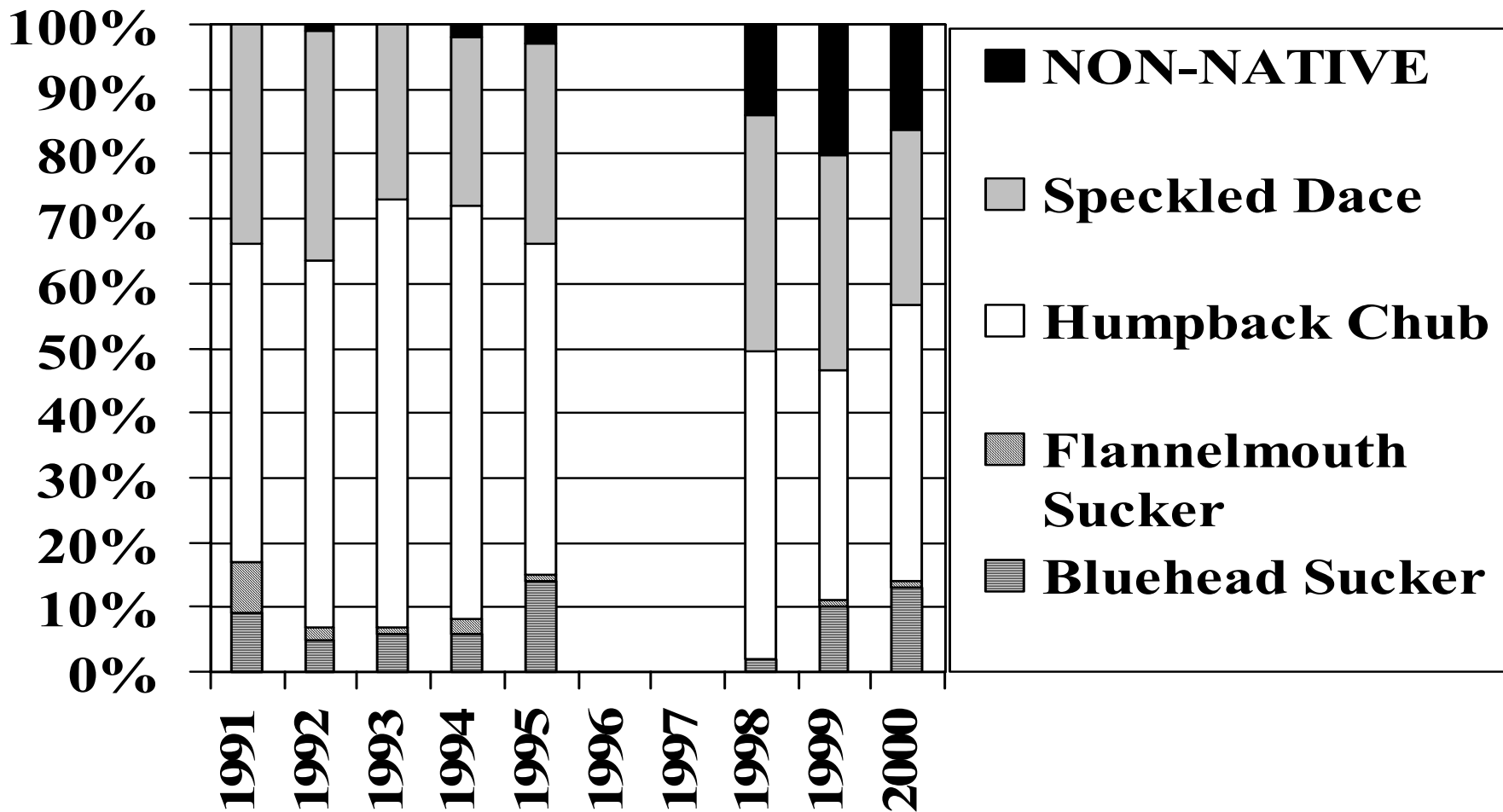




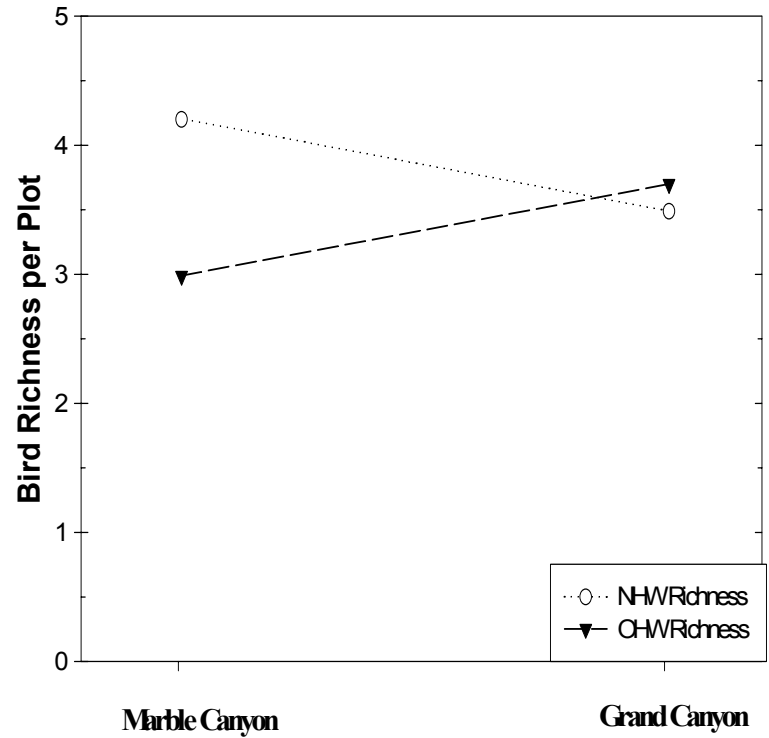
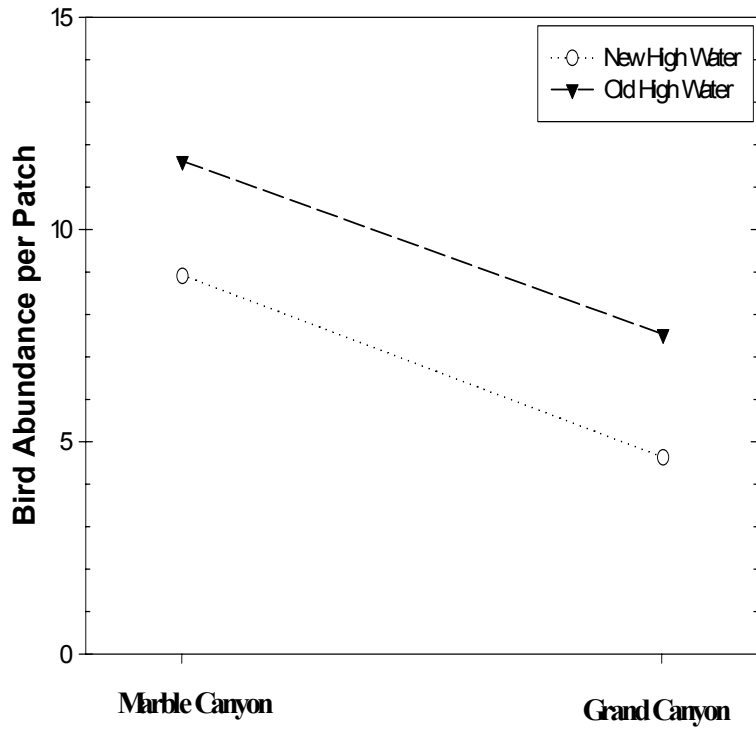
Electrofishing CPUE for RBT at Lees Ferry



CPUE from electrofishing for BT and RBT in December, 1983-2001



Proportions of Native and Non-Native fishes in LCR using hoopnets



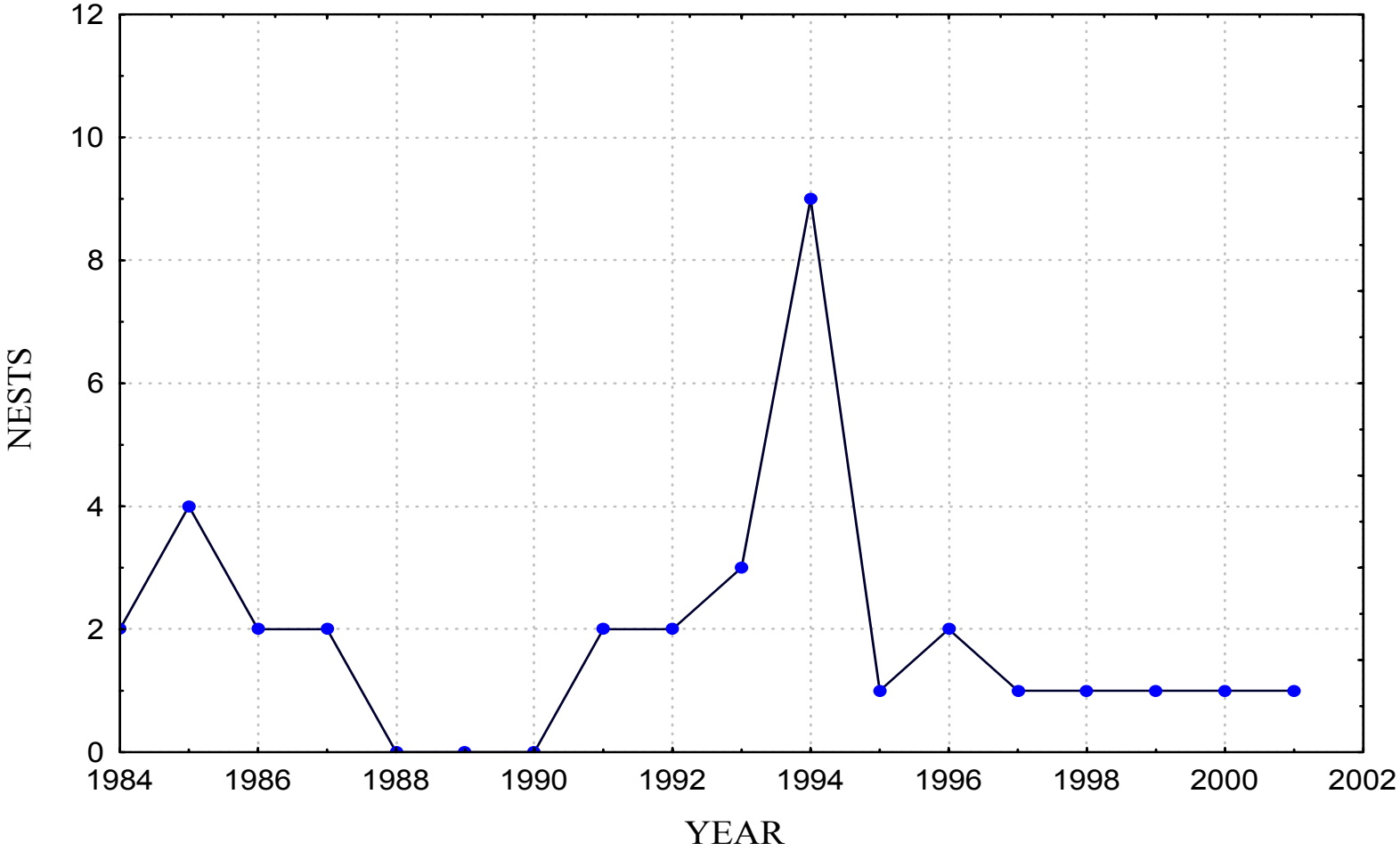
abundance

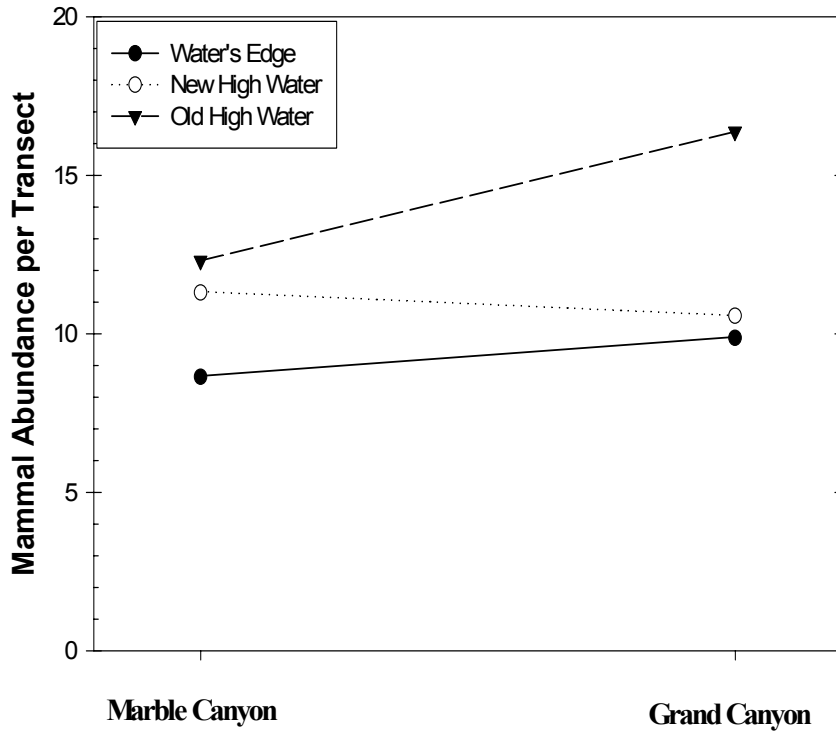
Species richness

Bird Species

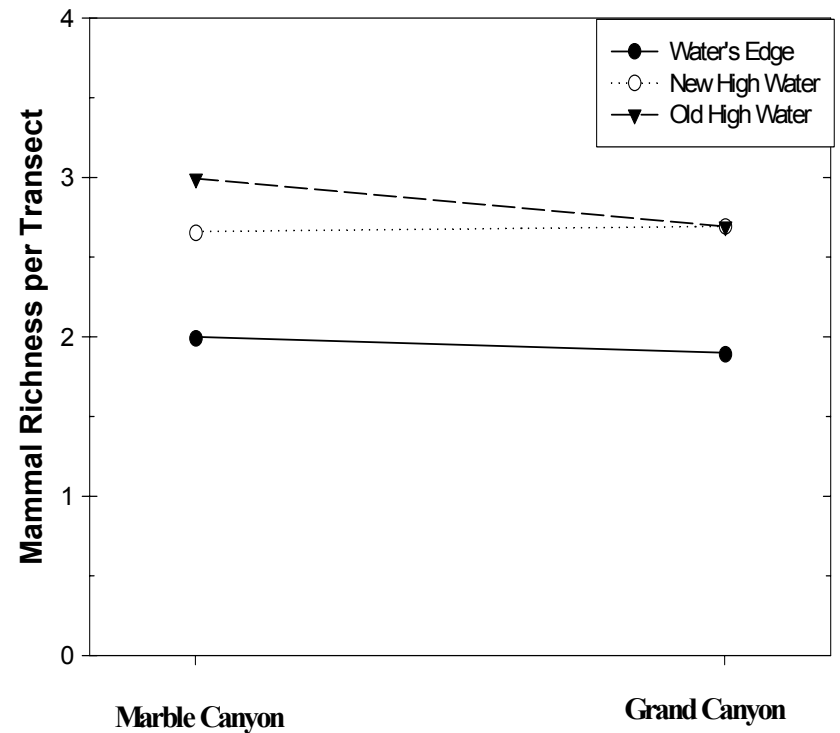
Southwestern Willow Flycatchers

Confirmed Nests



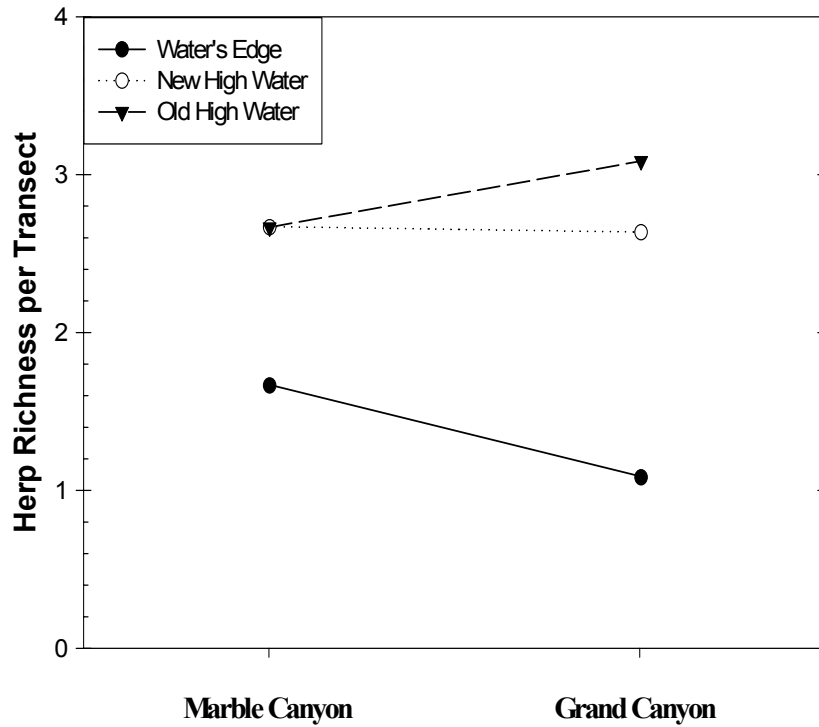


number

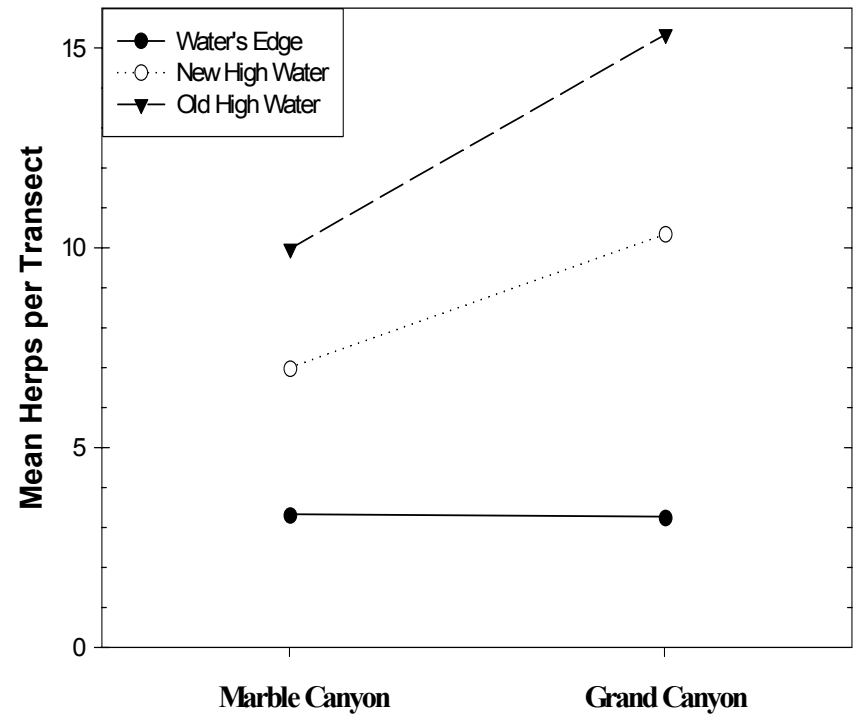


Number of species

Small Mammals

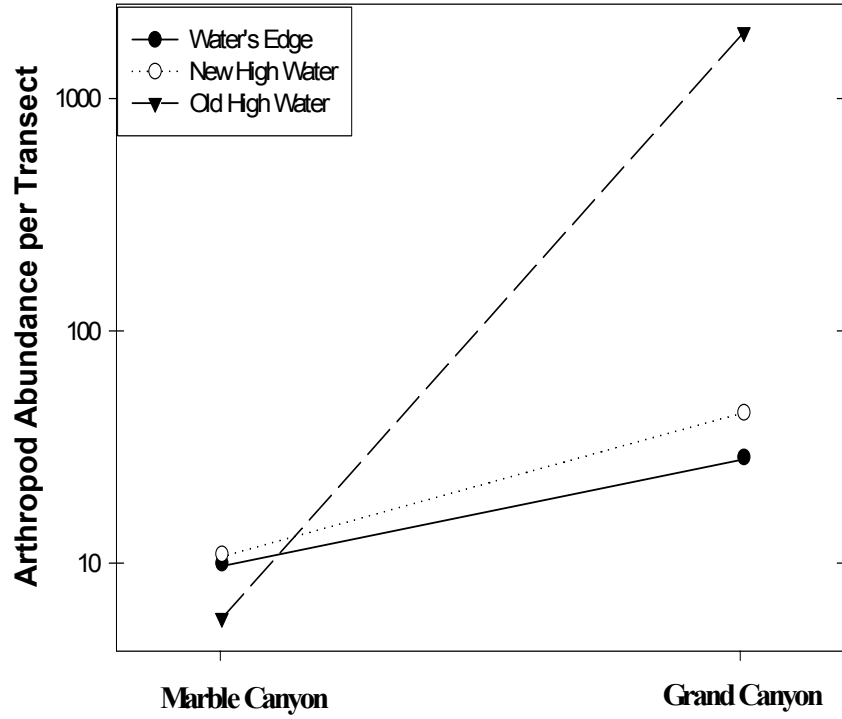


Species richness

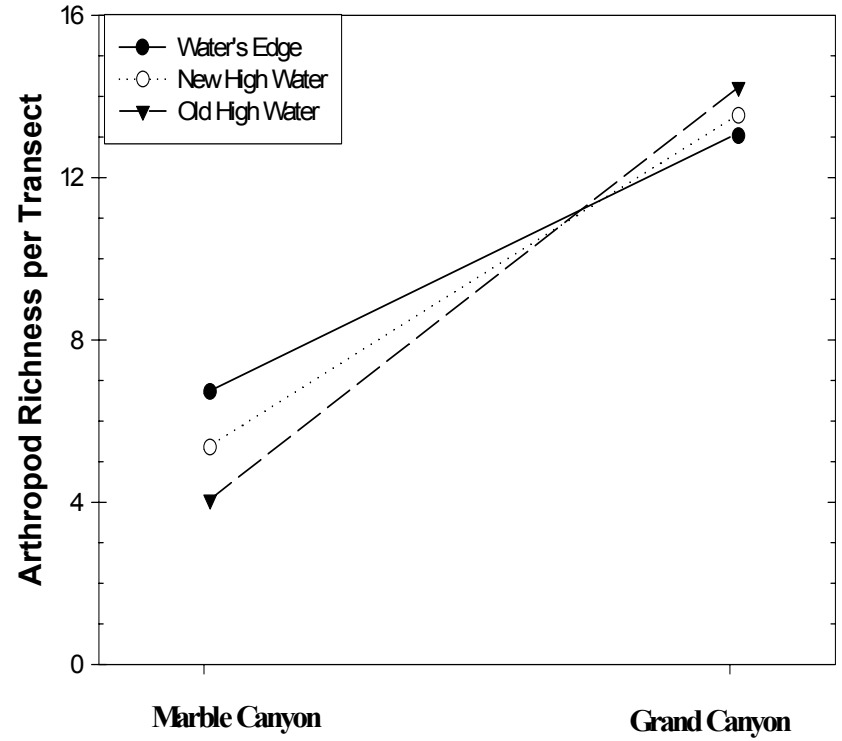


Catch rate

Herptofauna-snakes,
lizards, toads, etc

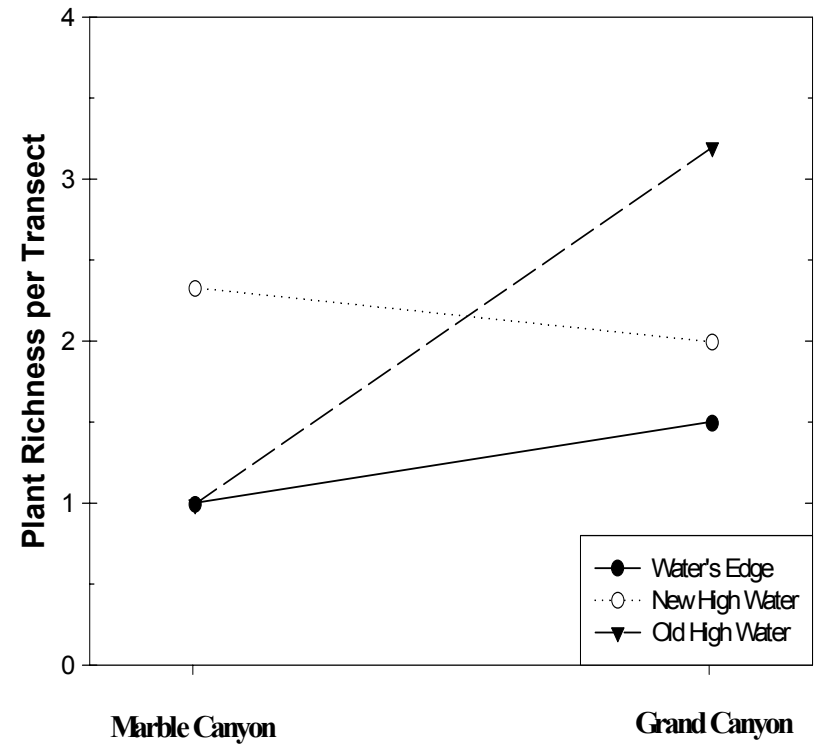
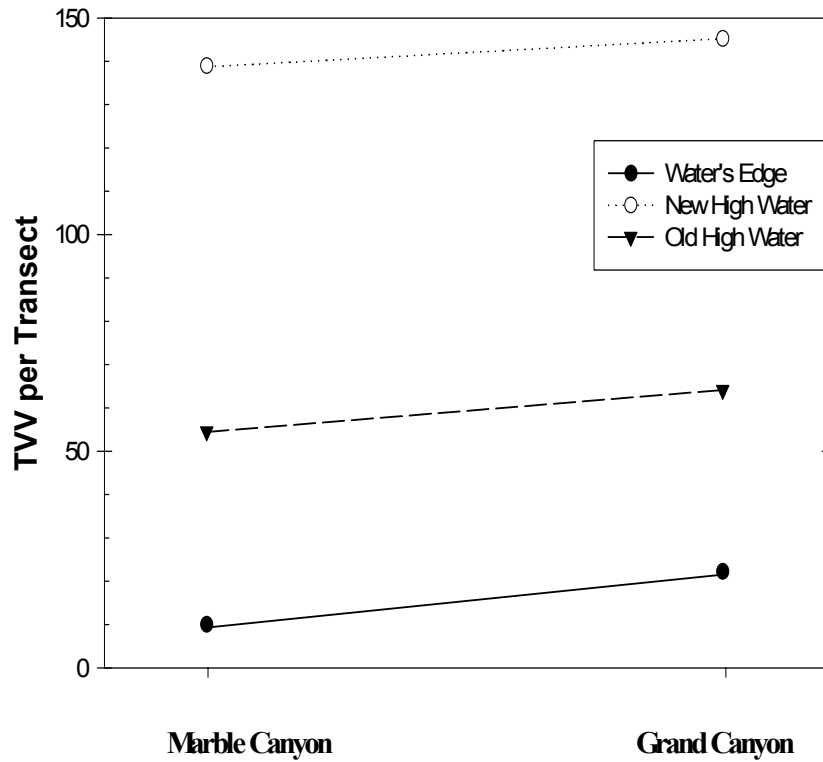


number



Number of species

Arthropods

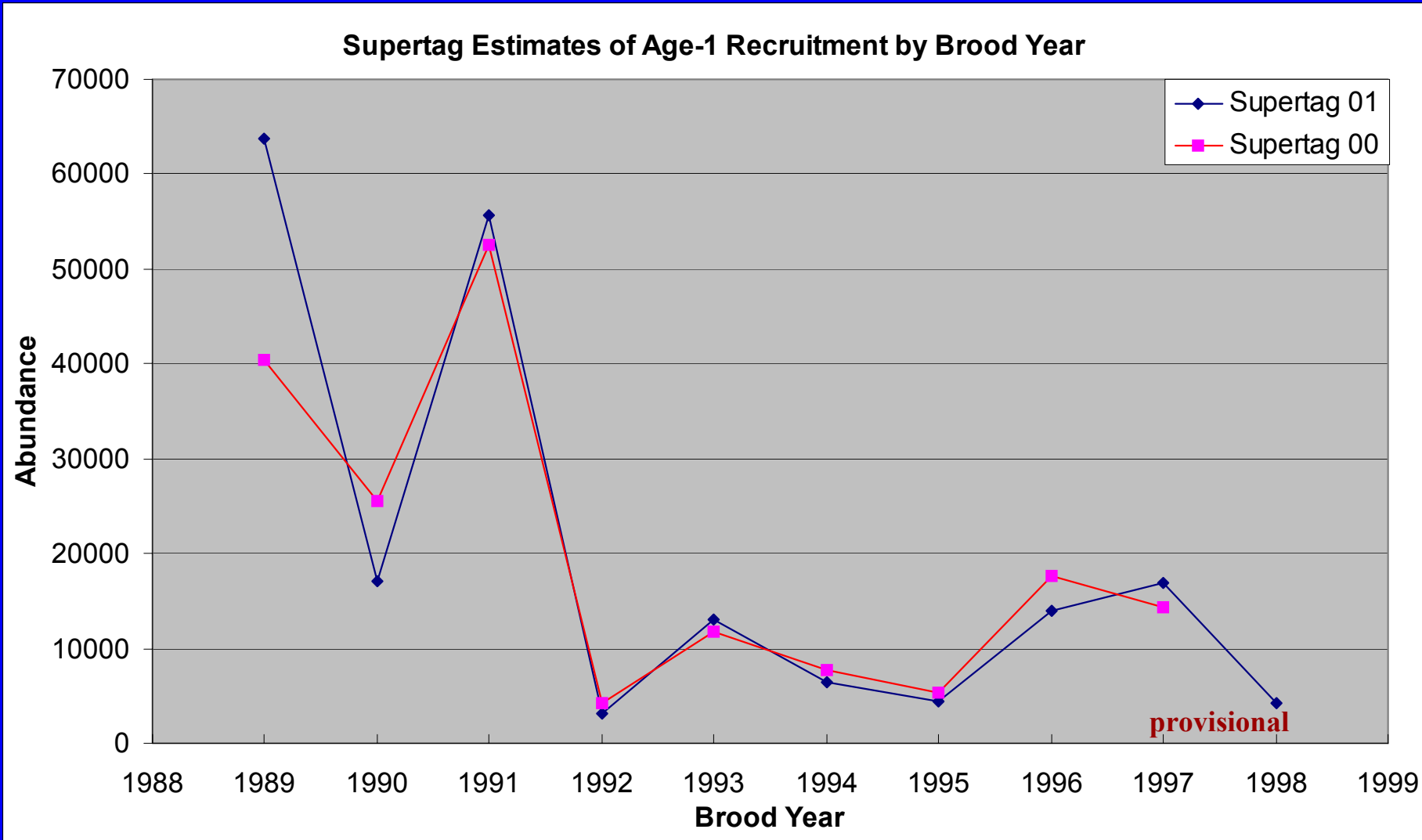


Vegetation volume

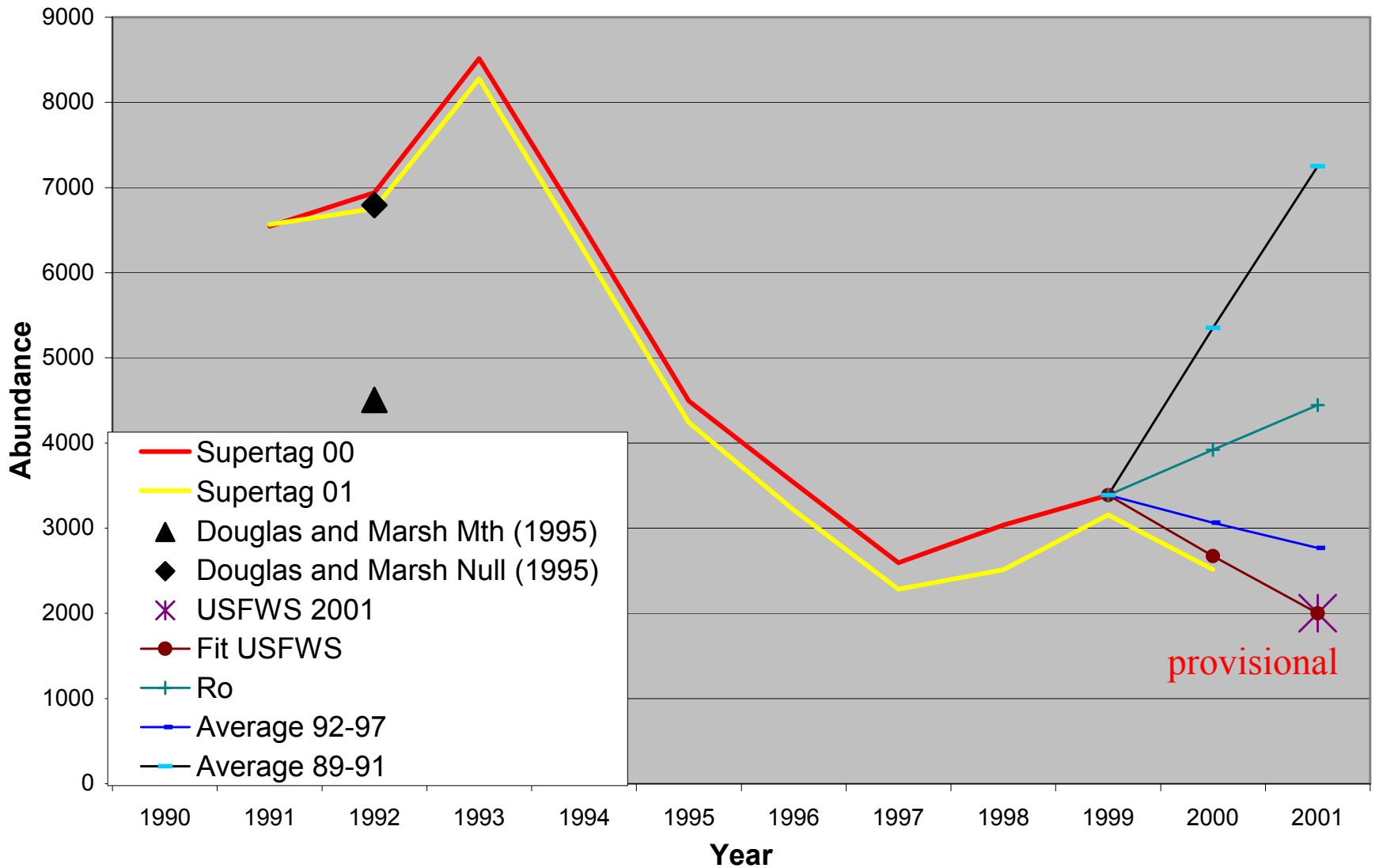
Number of species

Terrestrial Vegetation

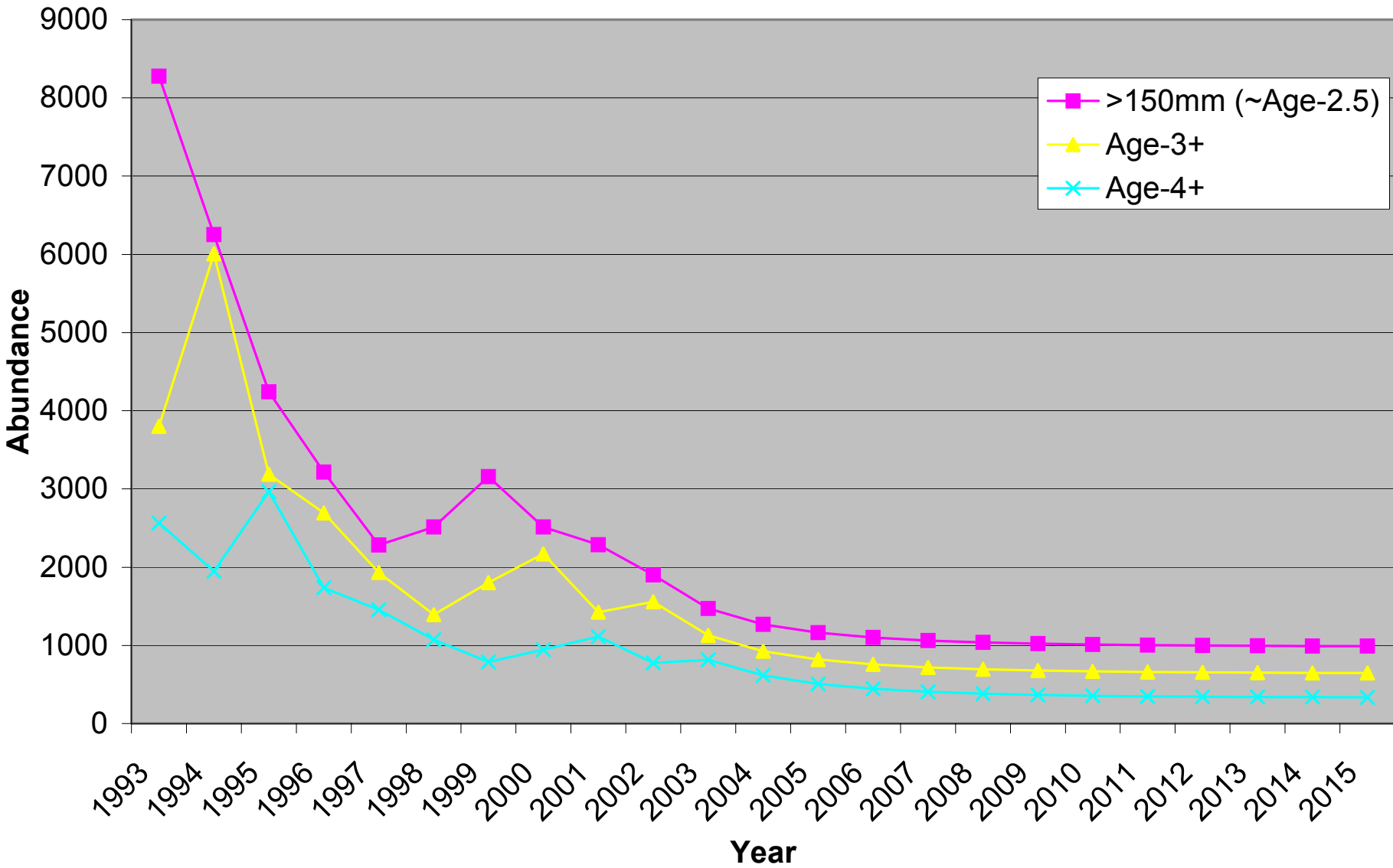
Updated HBC Recruitment

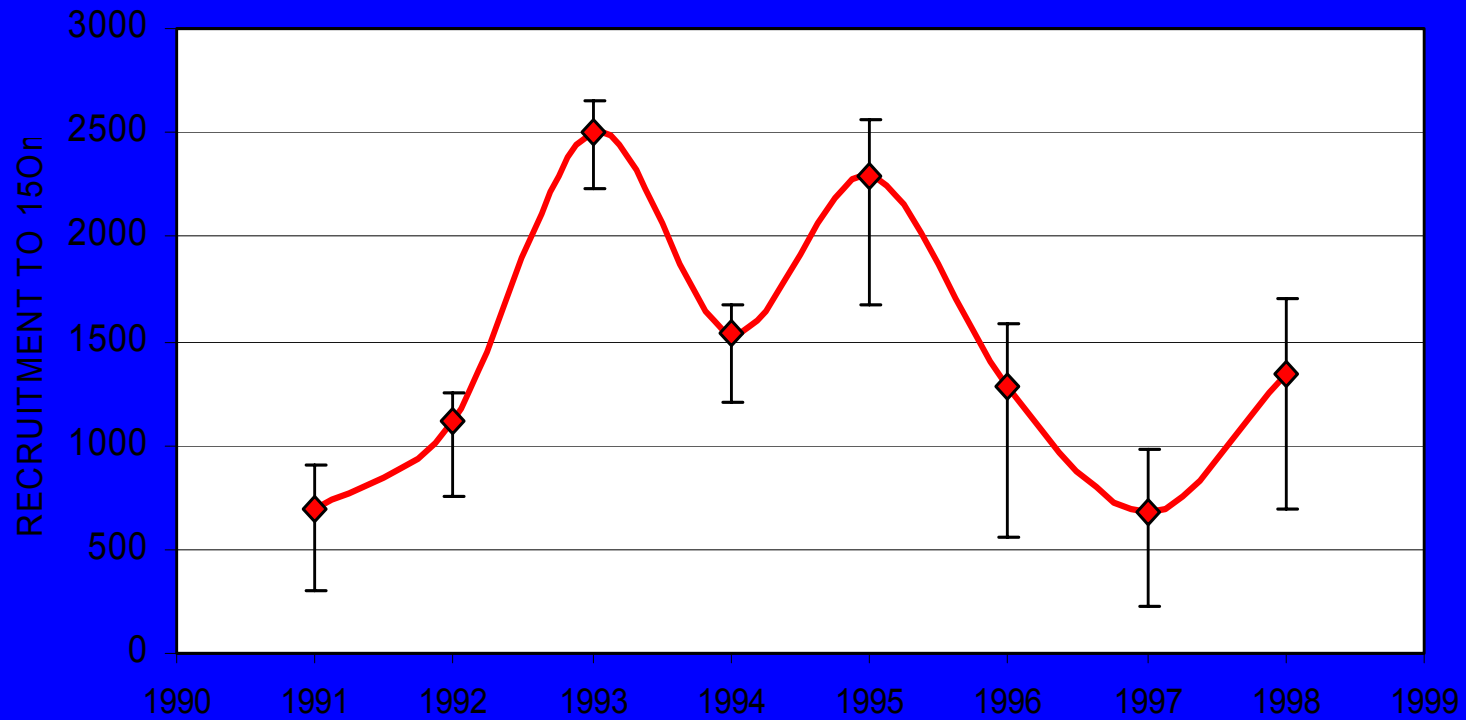


Abundance of HBC >150 mm



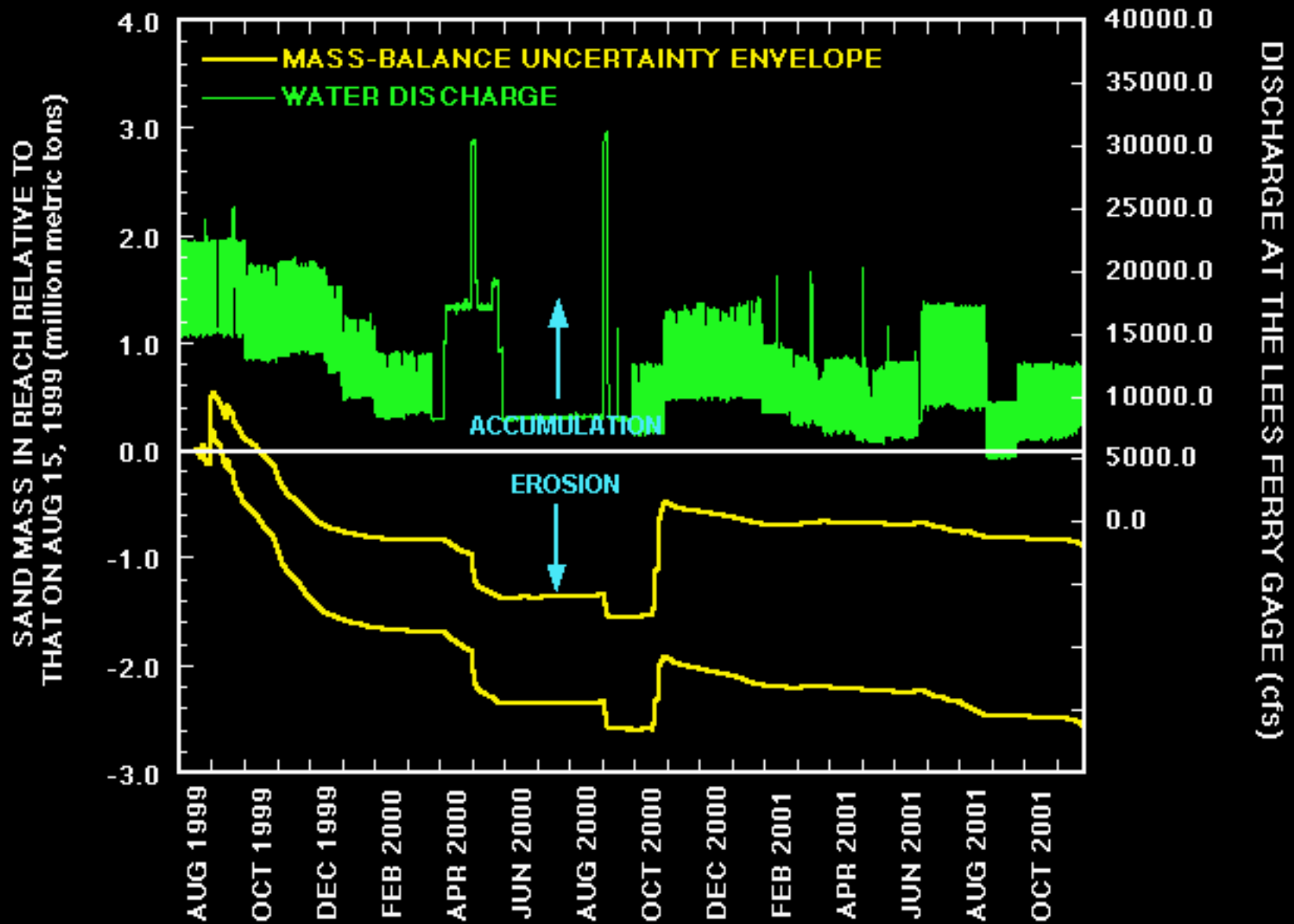
Projection of HBC Abundance by Age Class





Flannelmouth Sucker Recruitment-2001 Supertag Data

MASS-BALANCE SAND BUDGET BETWEEN LEES FERRY AND THE GRAND CANYON GAGE



COMPARISON OF LF TO GC 'MASS-BALANCE' SAND BUDGET WITH 'BETA' SAND BUDGET AT THE GRAND CANYON GAGE

