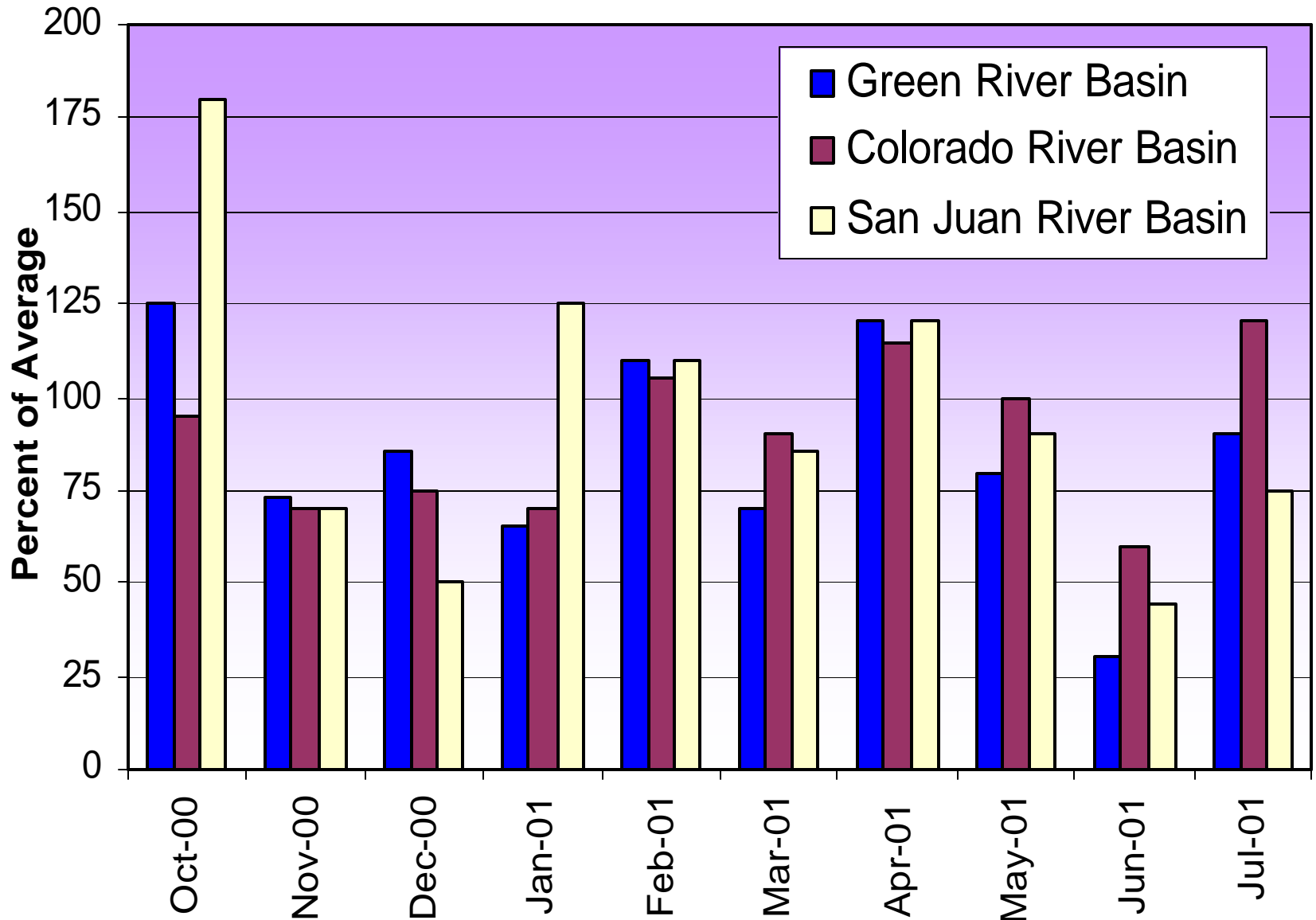


Upper Colorado River Basin Precipitation WY 2001



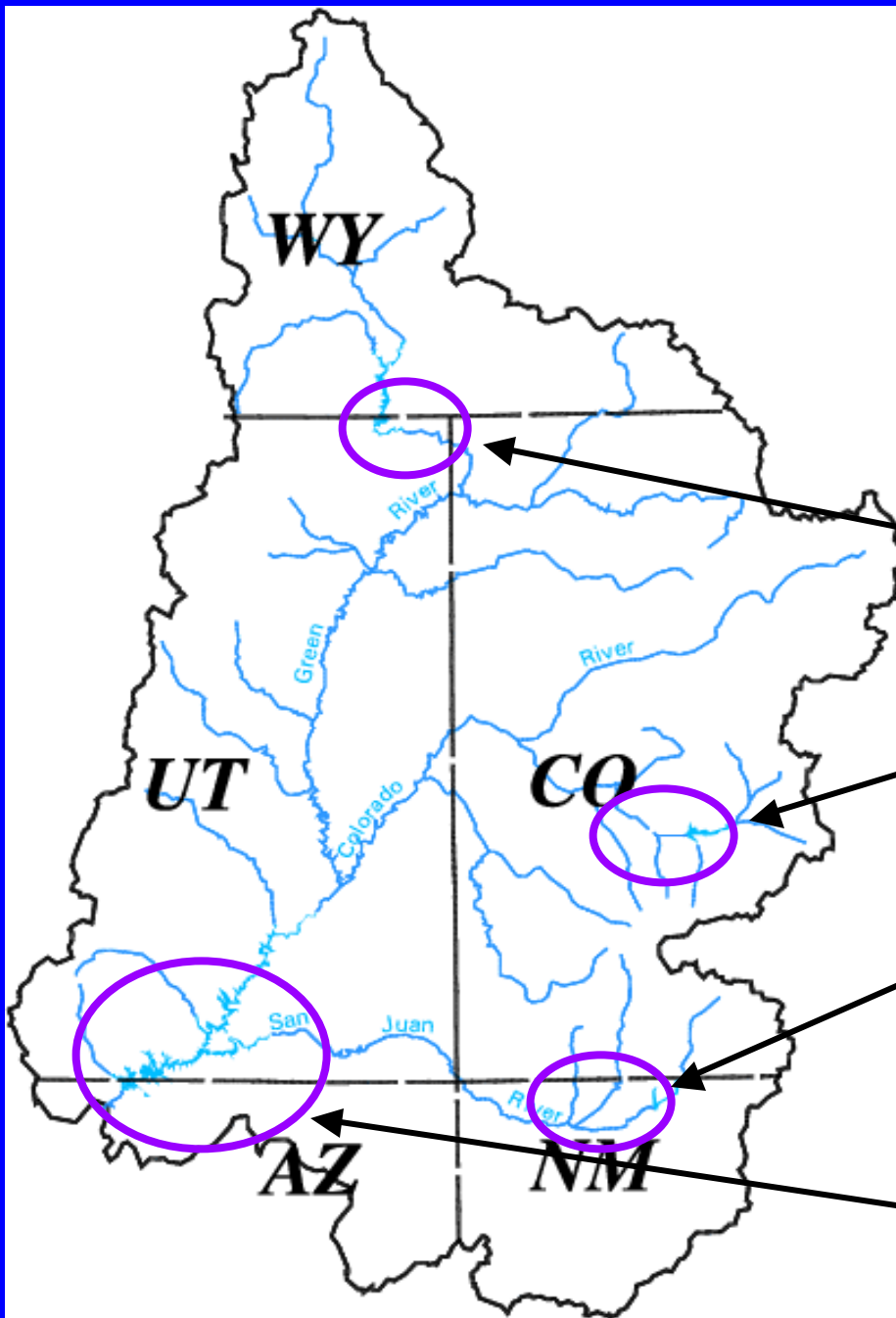
2001 Upper Colorado Apr–Jul Inflow

Flaming Gorge – 36 %

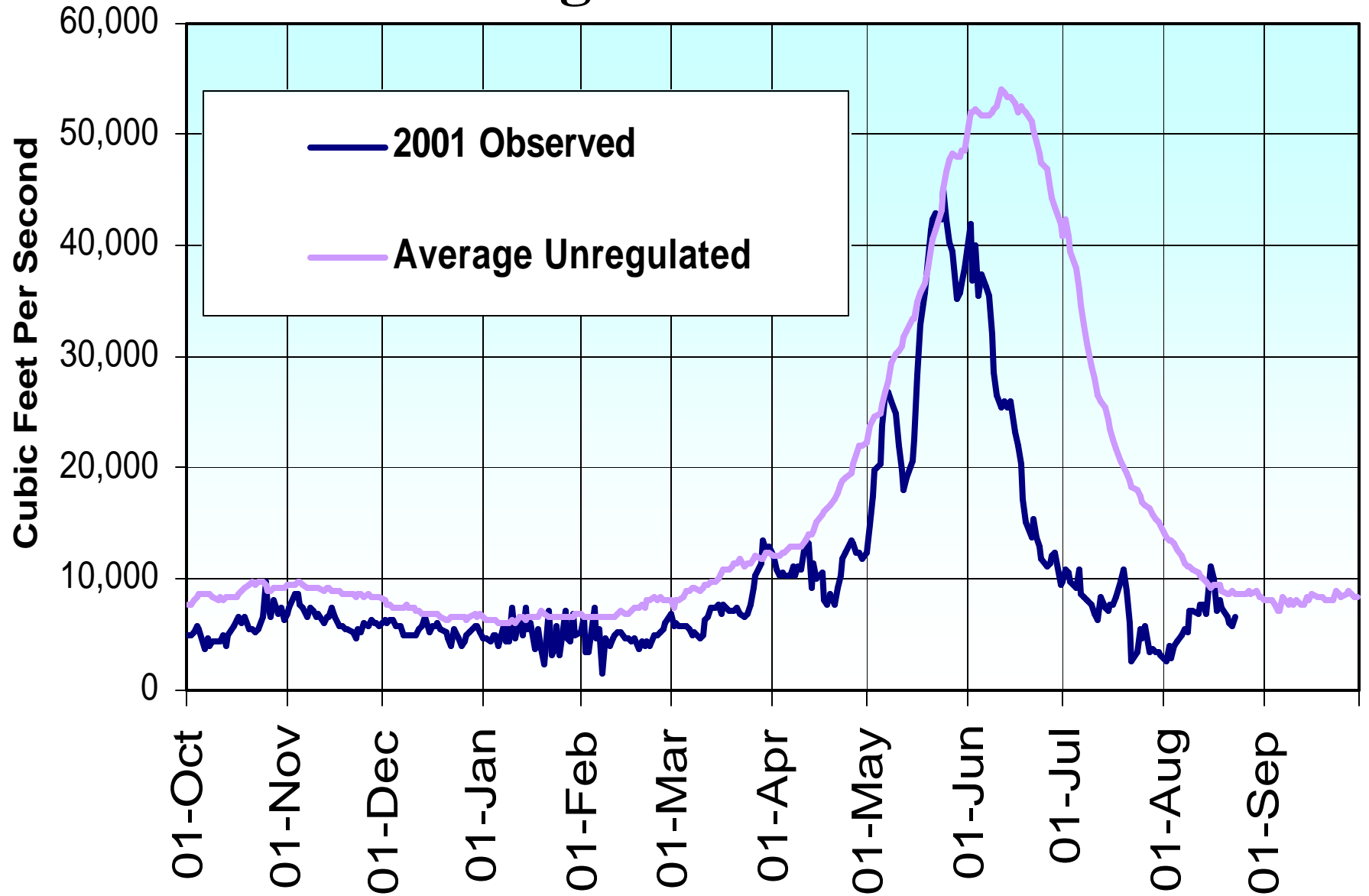
Blue Mesa – 72 %

Navajo – 107 %

Lake Powell – 56 %

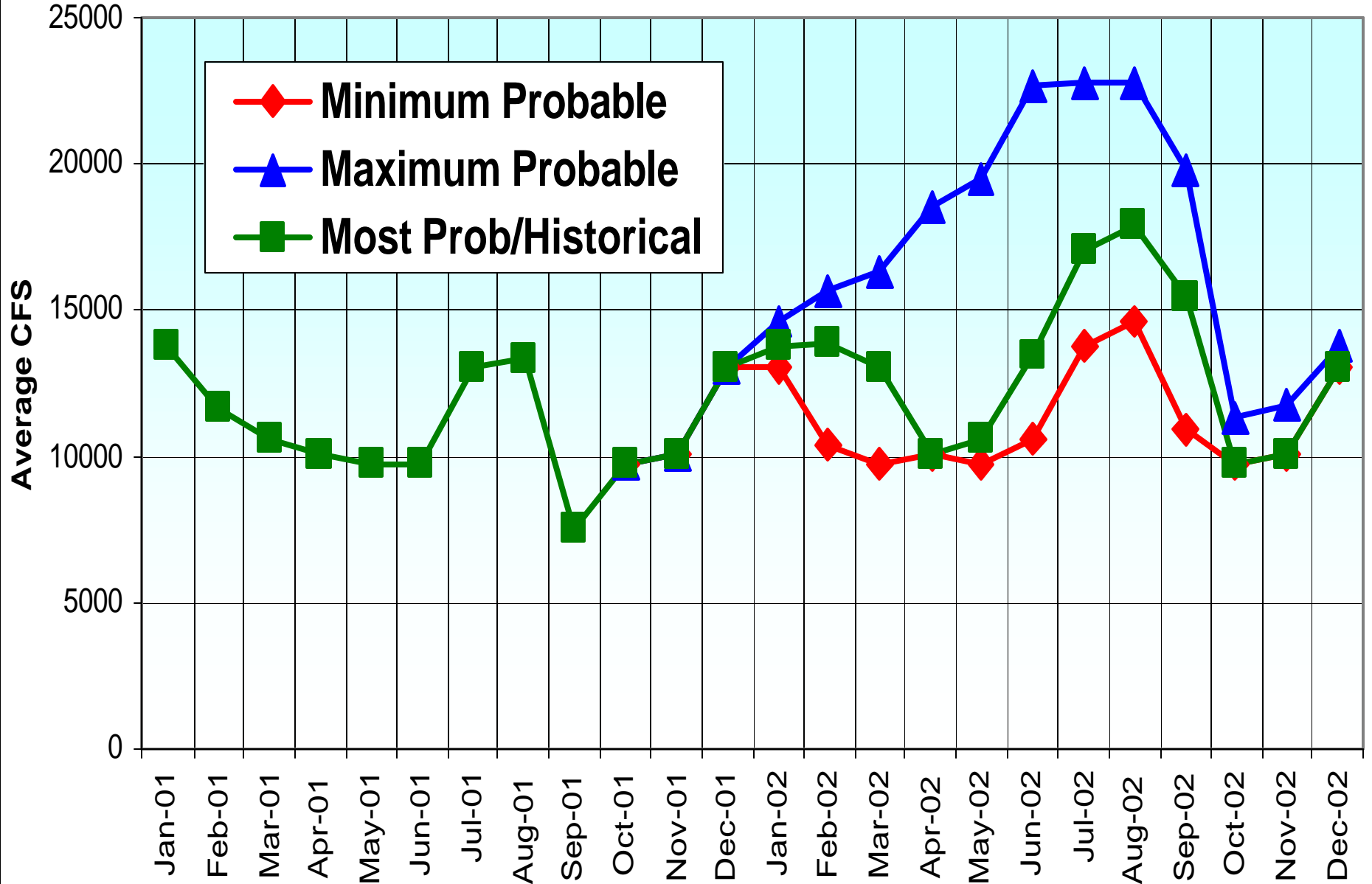


Water Year 2001 Lake Powell Unregulated Inflow



Glen Canyon Releases - 2001-2002

Based on August 2001 Final Forecast



Lake Powell Elevations - 2001-2002

Based on August 2001 Final Forecast

