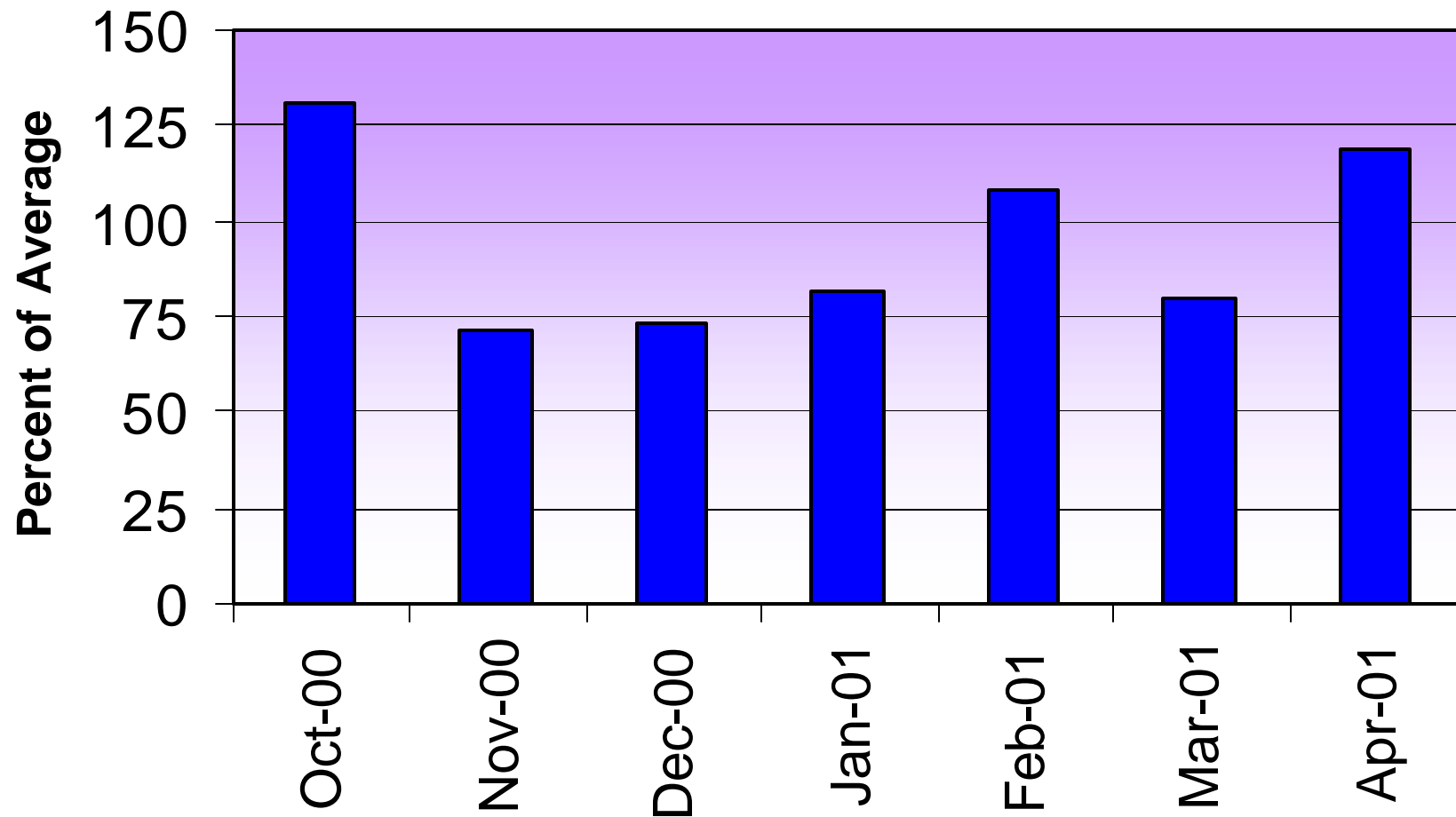
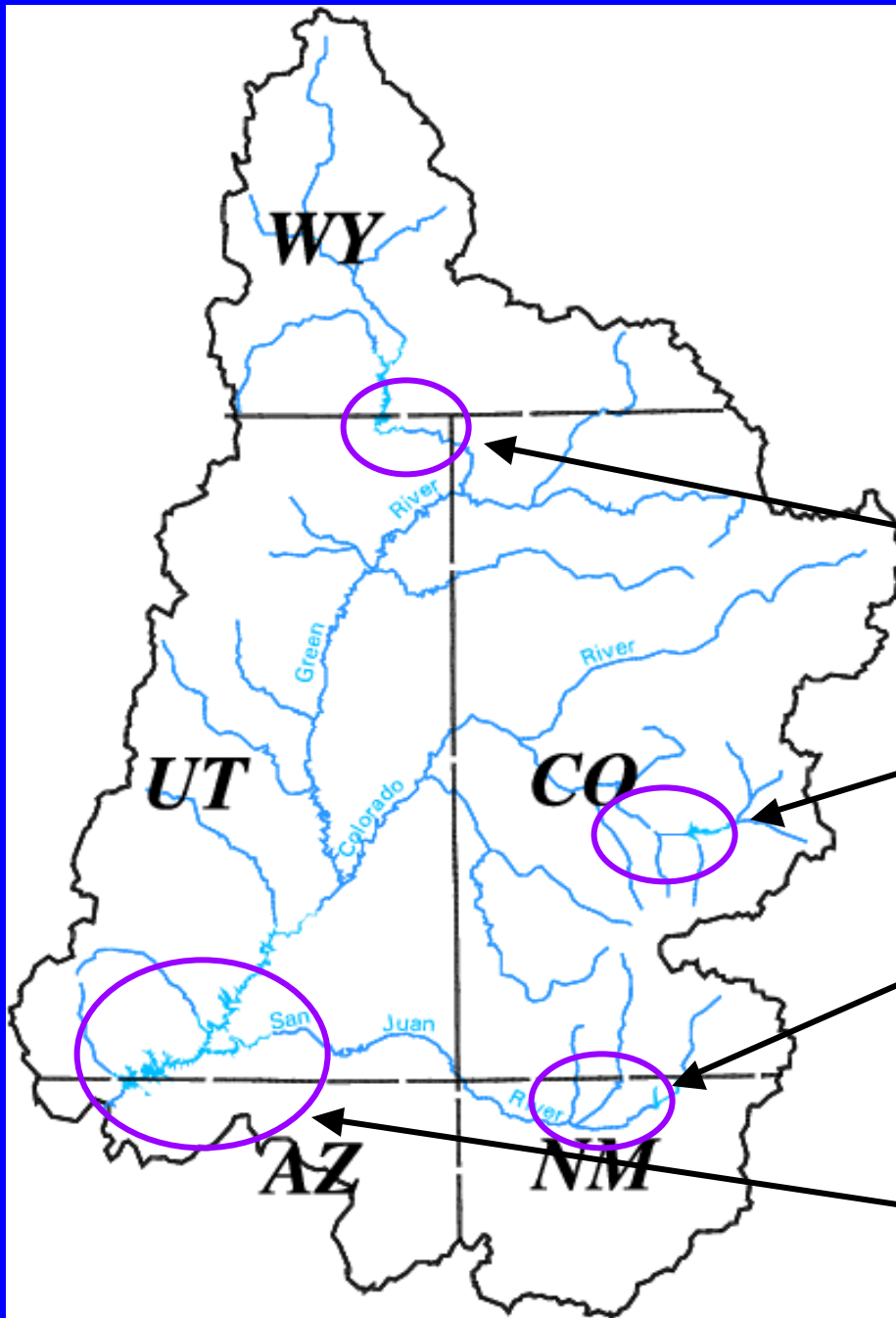


Colorado River Basin Precipitation

October 2000 – April 2001



Upper Colorado Inflow Forecasts (Mid-May 2001 Forecasts)



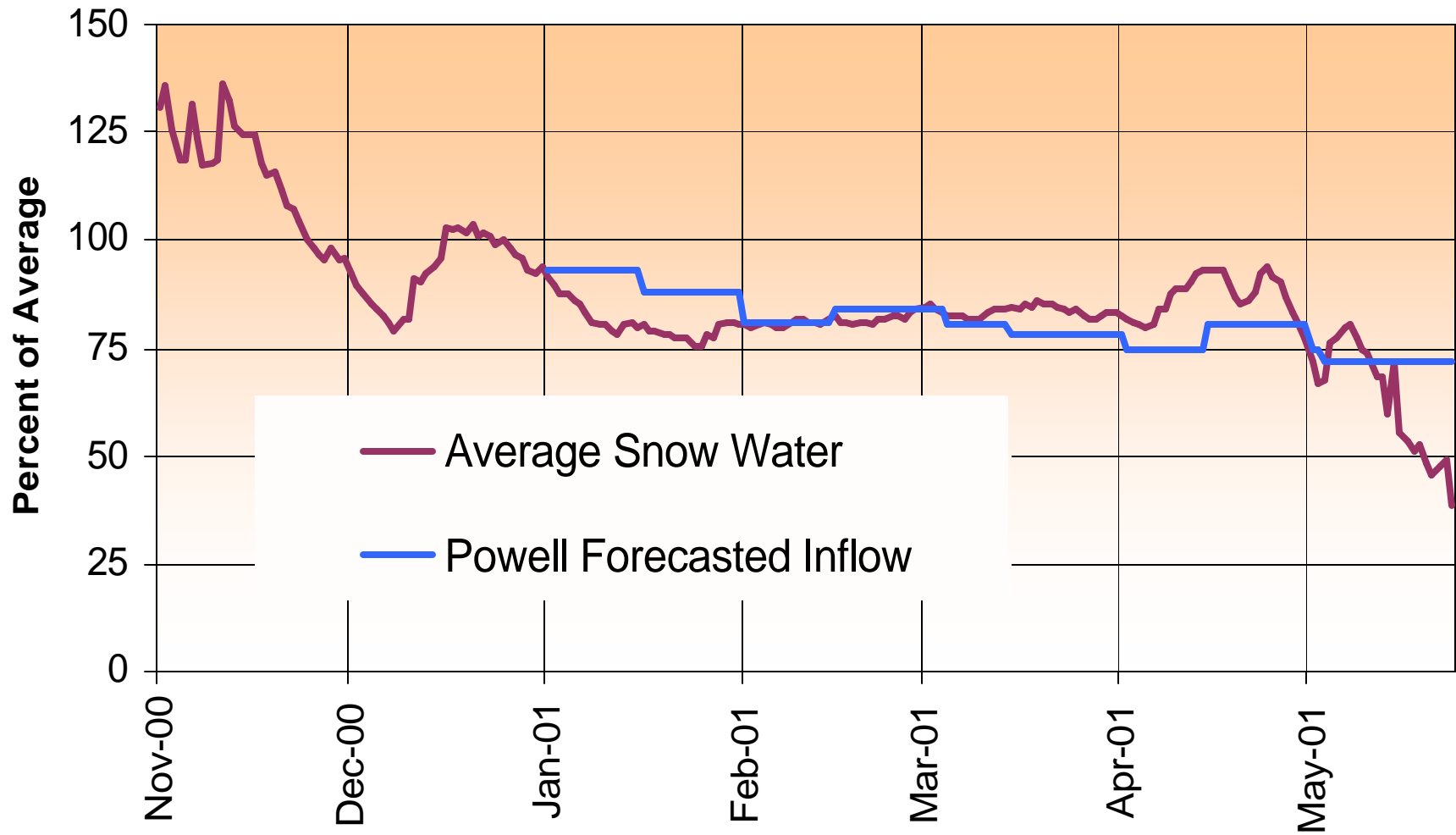
Flaming Gorge – 50 %

Blue Mesa – 76 %

Navajo – 122 %

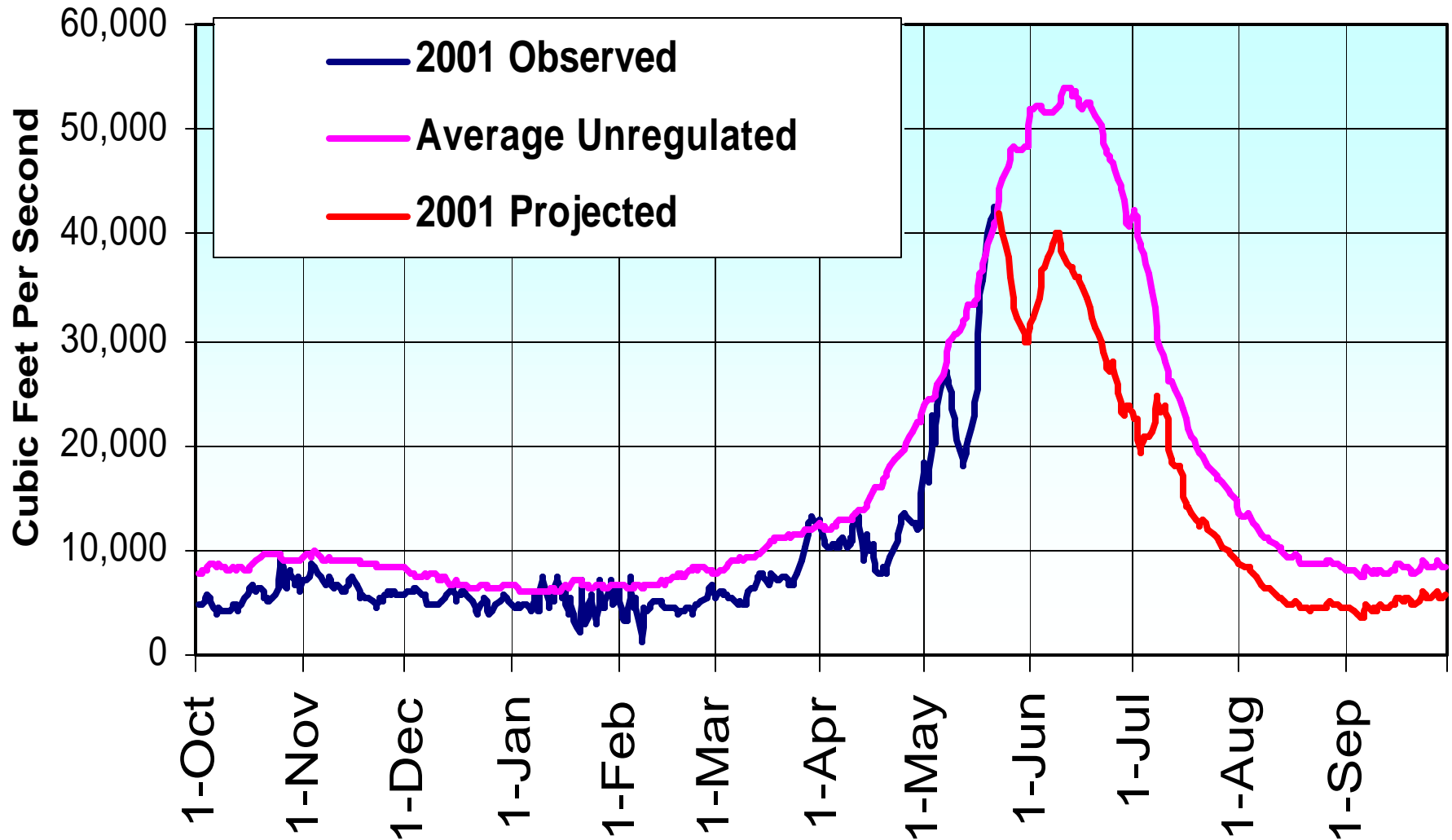
Lake Powell – 72 %

2001 Upper Colorado Snowpack and Lake Powell Inflow Forecast

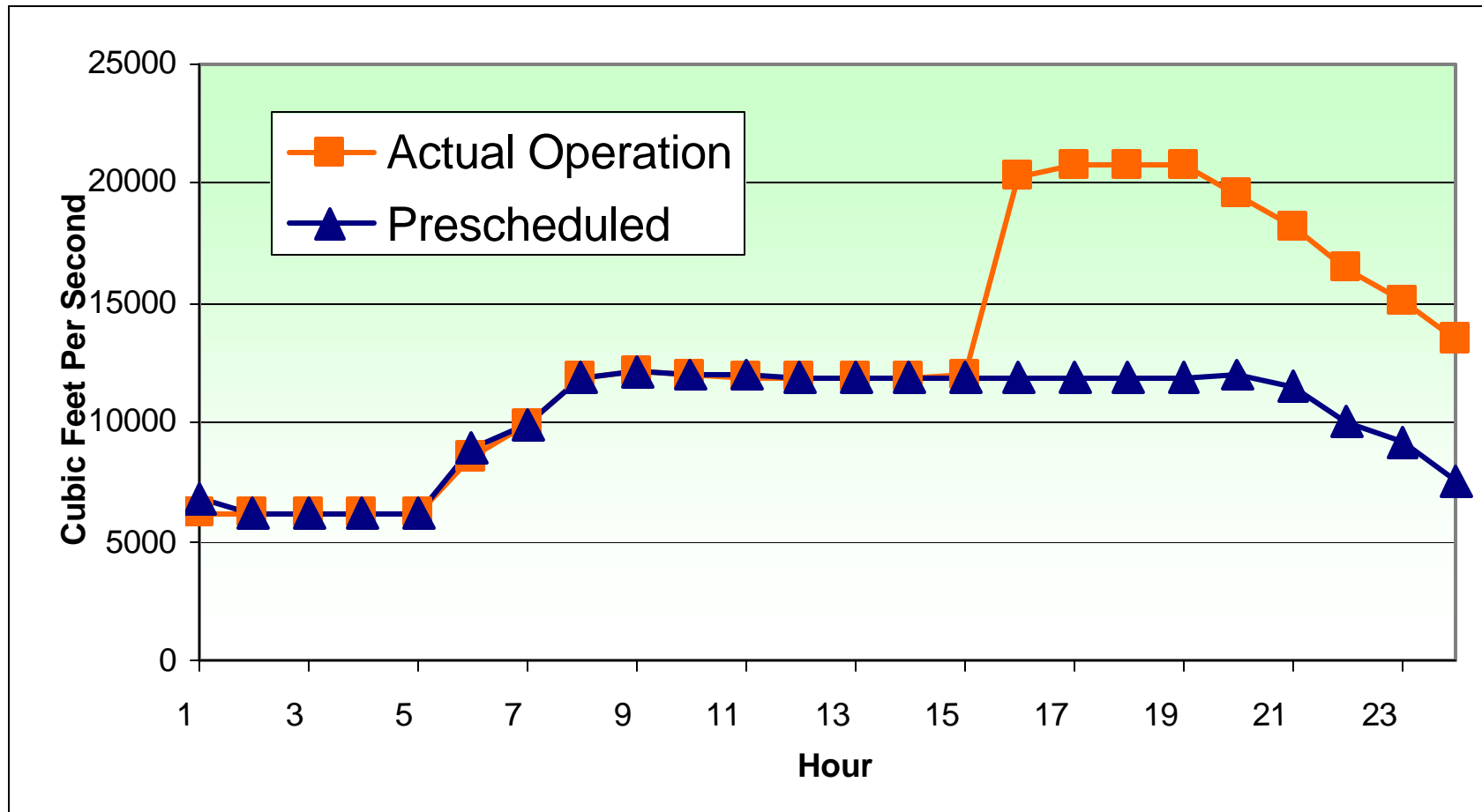


2001 Lake Powell Unregulated Inflow

Observed through May 23, projected thereafter



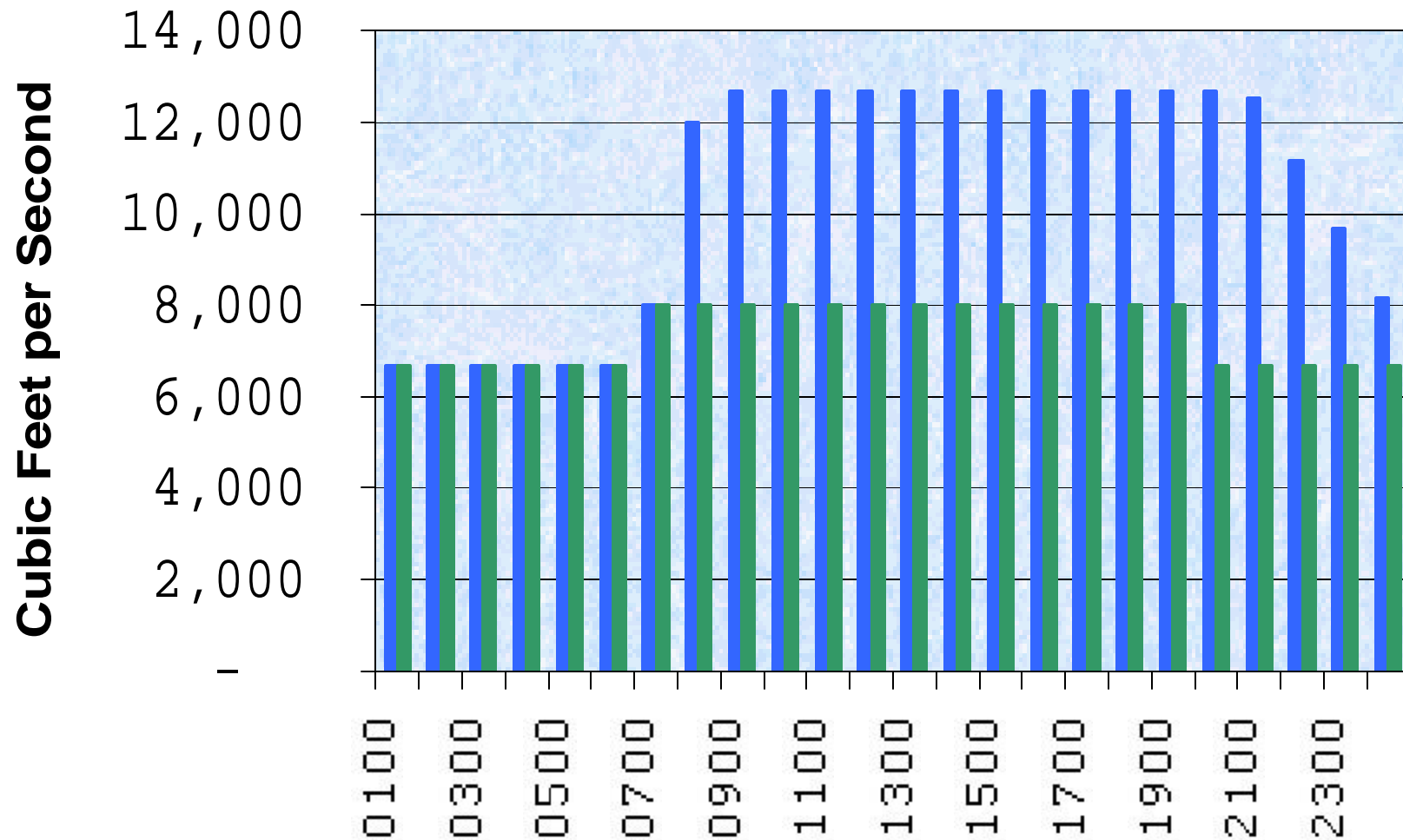
Emergency Releases at Glen Canyon May 7, 2001



Glen Canyon Dam Hourly Releases

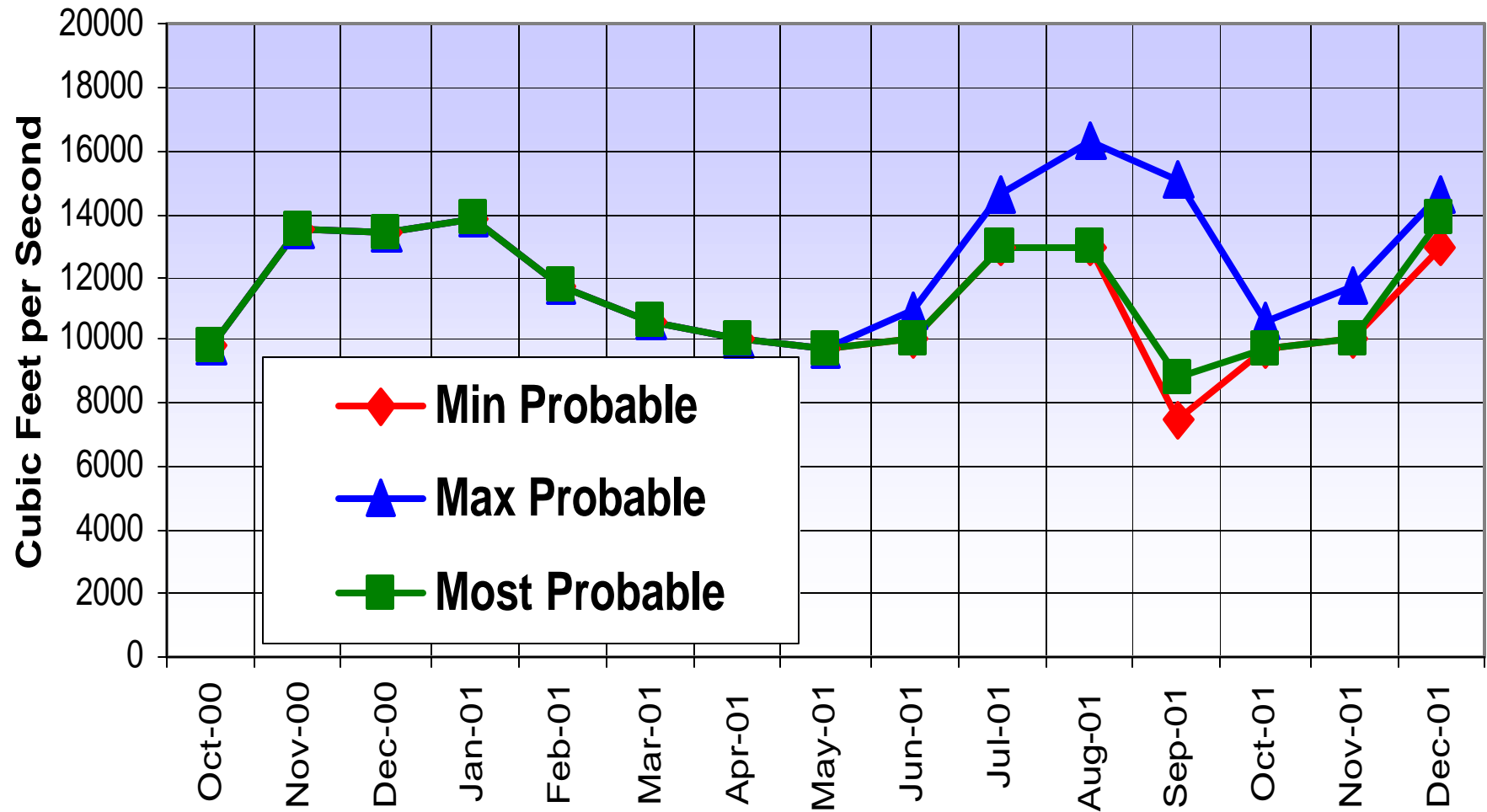
May 29 through June 30, 2001

■ Mon - Sat
■ Sundays



Glen Canyon Releases

Based on May 2001 Final Forecast



Projected Lake Powell Water Surface Elevations Based on May 2001 Final Forecast

