

LSSF Economic Impact on Electrical Power Generation

Report by:

S. Clayton Palmer

Clark D. Burbidge

Western Area Power Administration

Upcoming Modeling Events

- Stakeholder Review of Modeling Methods.
 - May 2nd and 3rd
 - Salt Lake City, Marriott City Center
- Seminar on CRSP Power Models.
 - July
 - Chicago, Argonne National Laboratories

Hydro LP

- Simulates water release for generation to meet customer load
- Maximizes revenues and minimizes costs
- Uses available water, market price, customer load, and unit environmental and operating constraints
- Used to analyze impacts of proposed constraints
- Forecasts available resources

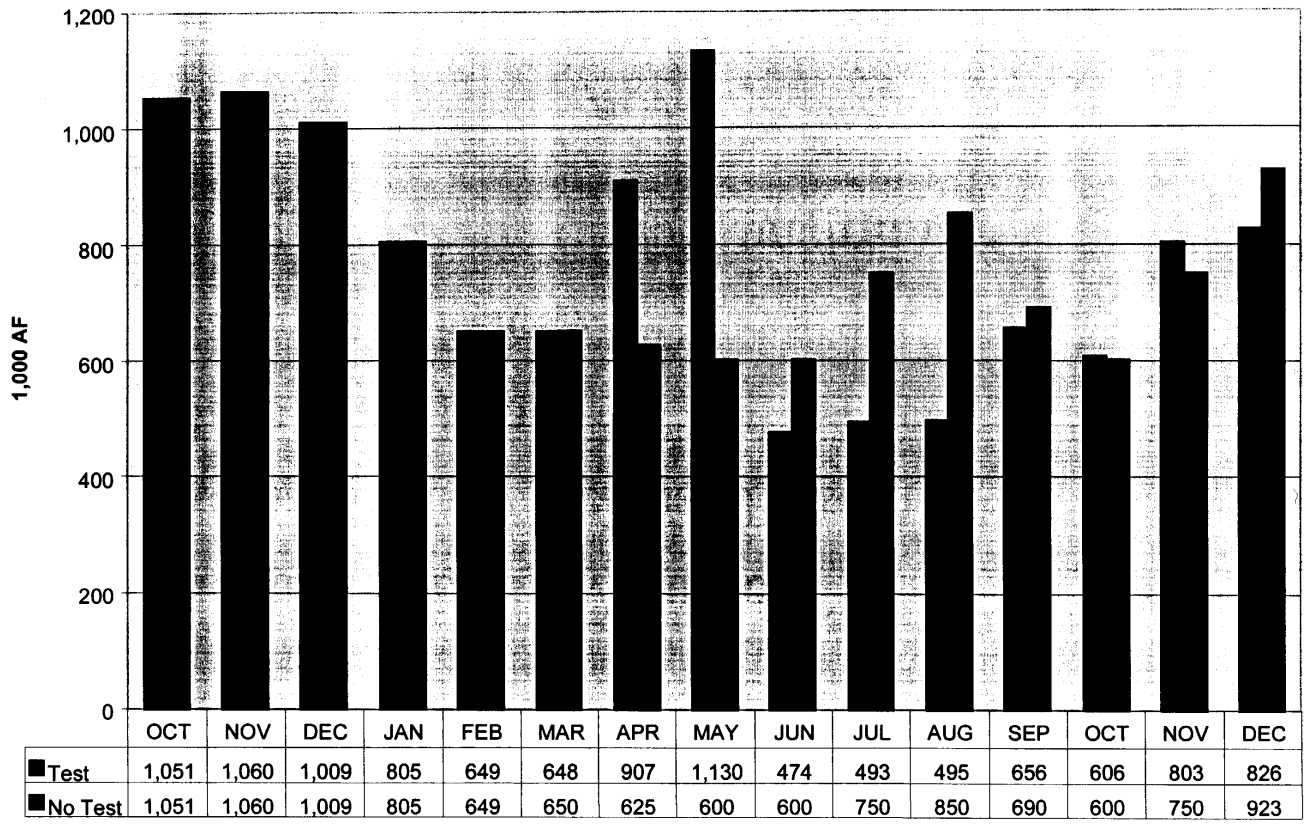
Base Case Assumptions

- USBR No Test Monthly Water Estimates
- Glen Canyon Record of Decision
- Normal Operations at other CRSP Units
- CRSP Customer Pre-Schedule Demand
- Average Hourly Purchase Prices

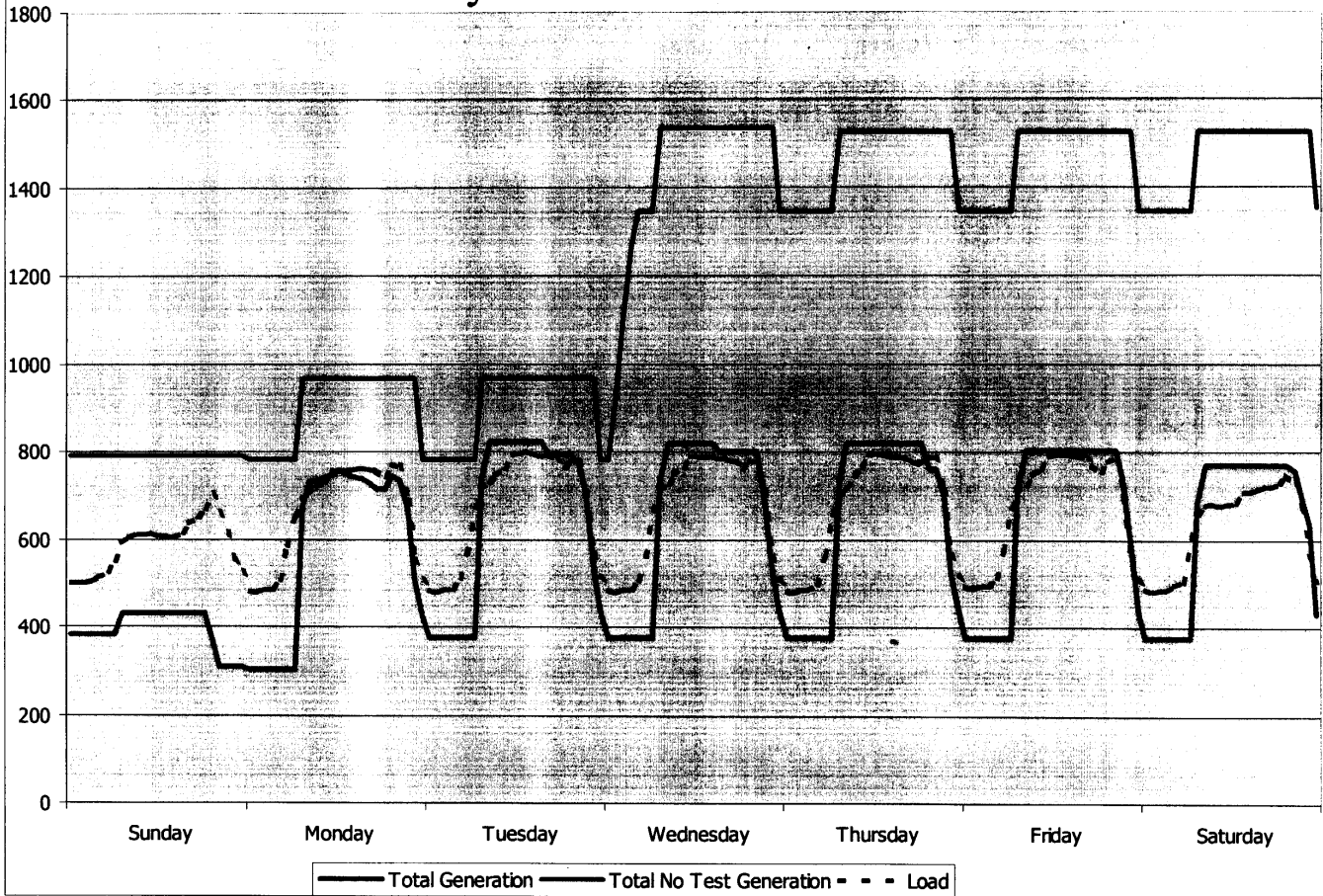
Test Case Assumptions

- Actual Monthly Volume
- Actual Hourly Release Pattern
- Base Case Load
- Base Case Prices
- Base Case Operating Constraints

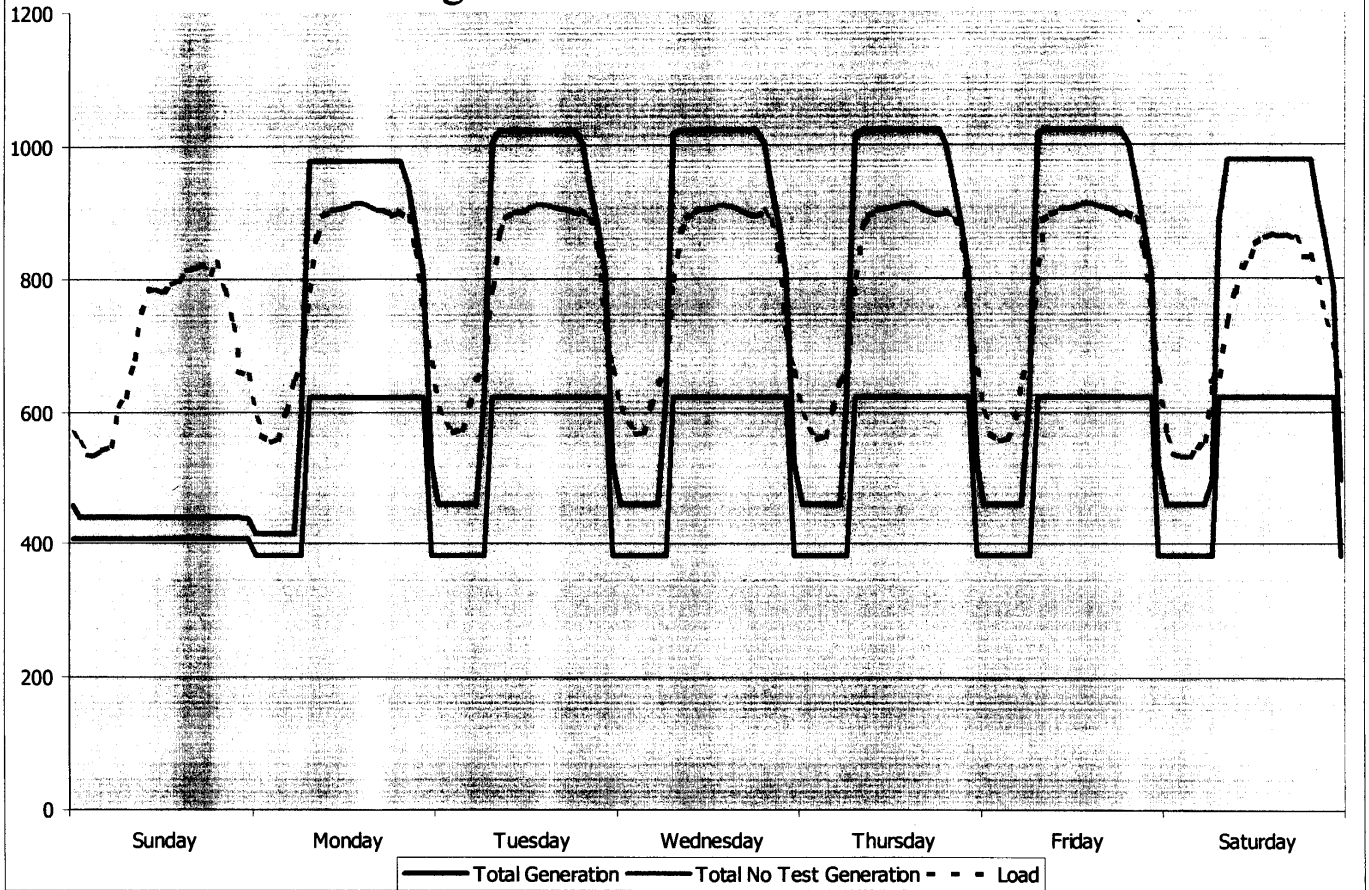
Comparison of Water Releases



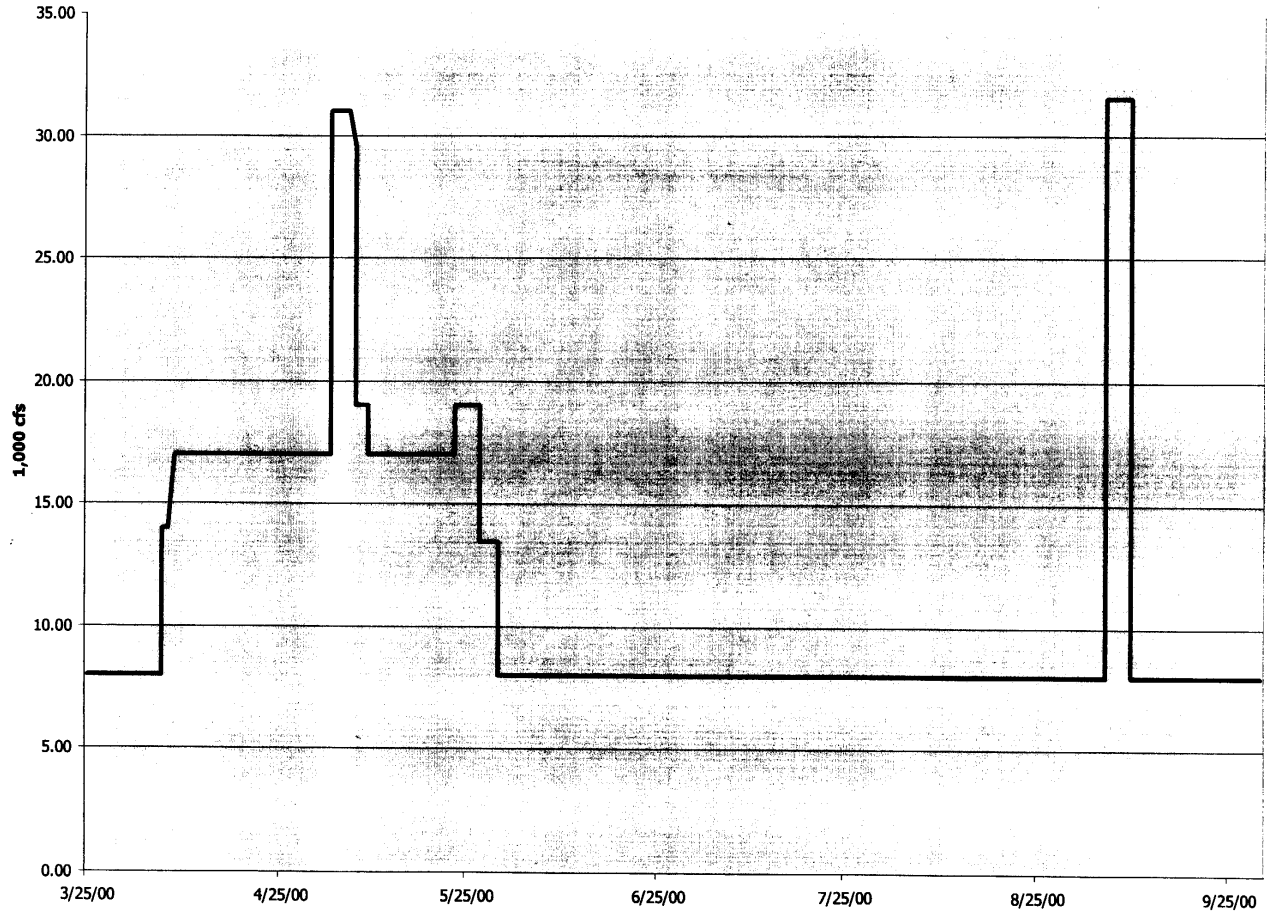
May: Total CRSP Generation

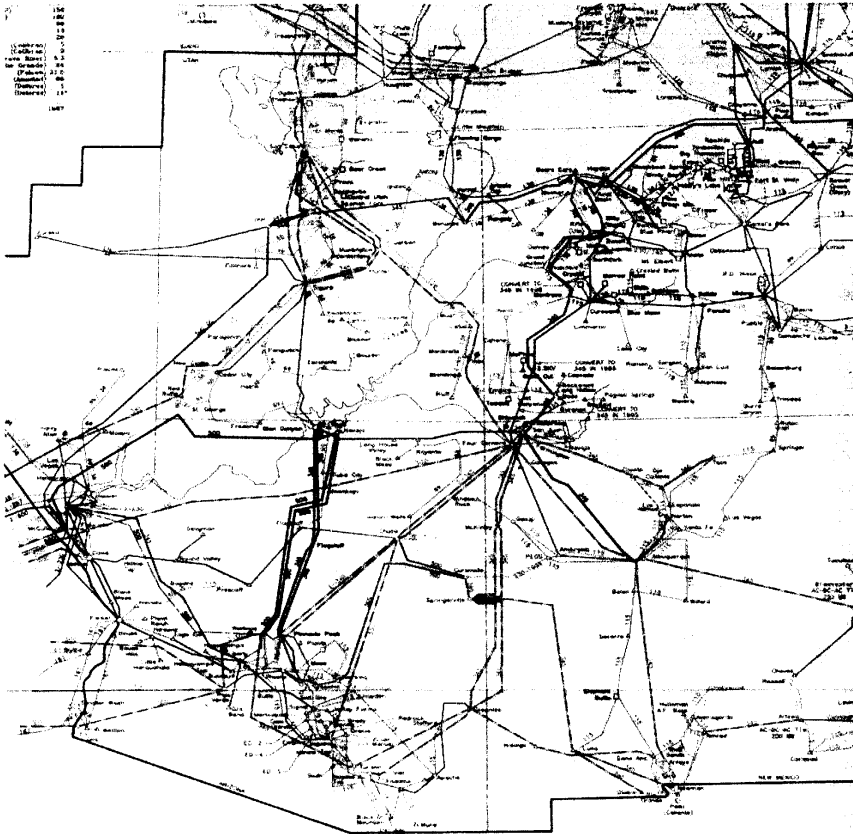


August: Total CRSP Generation



Glen Canyon Test Releases





The Colorado River Storage Project Transmission Grid

UNITED STATES
DEPARTMENT OF ENERGY
WESTERN AREA POWER ADMINISTRATION
SALT LAKE CITY AREA OFFICE

SALT LAKE CITY AREA INTEGRATED PROJECTS
INTERCONNECTED TRANSMISSION SYSTEM

8-77-1000

Results: Total \$'s by Month

<u>Month</u>	<u>Net of Test and No Test</u>
April	\$3,854,848.39
May	\$7,210,218.91
June	(\$1,458,815.02)
July	(\$8,210,859.01)
August	(\$21,430,628.83)
September	(\$2,474,411.73)
October	\$174,306.63
November	\$106,513.89
December	\$1,030,591.18
<i>Total</i>	(\$21,564,523.05)

Questions?

- Clayton Palmer
 - (801) 524-3522
 - cspalmer@wapa.gov
- Clark Burbidge
 - (801) 524-3582
 - burbidge@wapa.gov