

Lees Ferry Trout Fishery

STATUS AND TRENDS

Downstream Trout 2000

PRELIMINARY INFO

Technical Work Group

March 2001

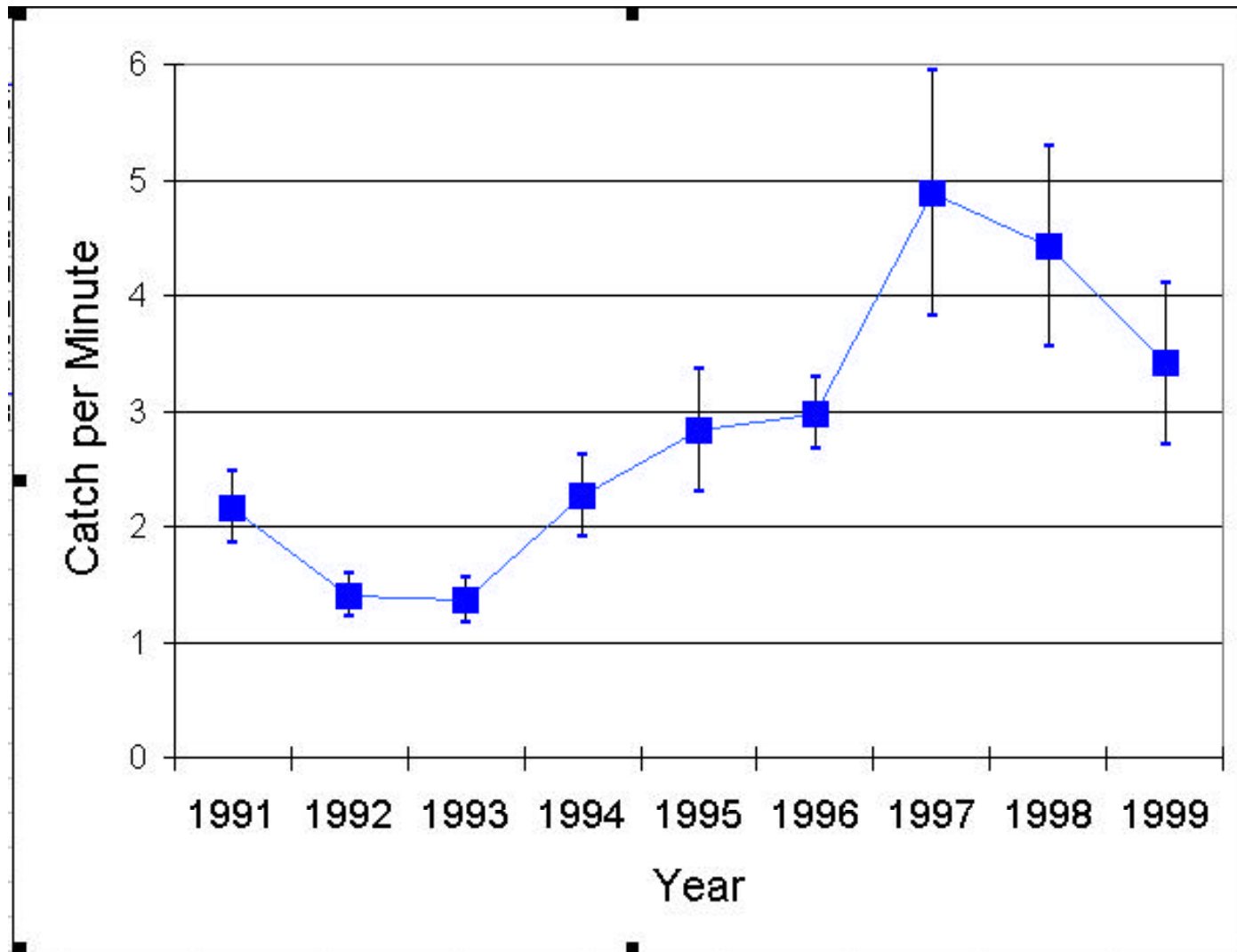
Bill Persons, Dave Speas, Ted McKinney, Scott Rogers

Arizona Game and Fish Department

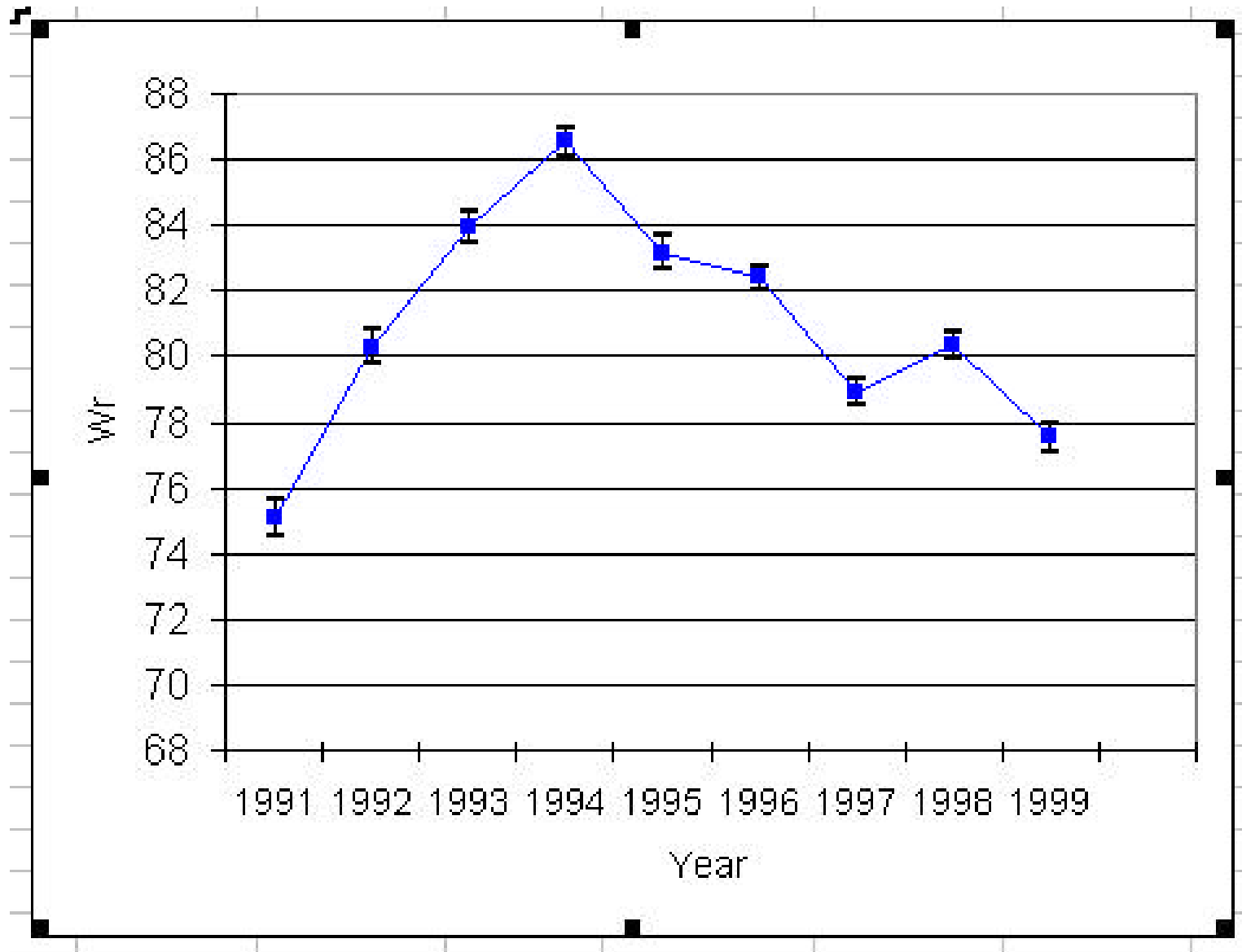
Lees Ferry Trout: SCORE report

- CPUE (Catch/minute electrofishing)
- Kn (Relative Condition) = Wr (Relative Weight)
- Growth
- PSD (Proportional Stock Density)
- Natural Recruitment

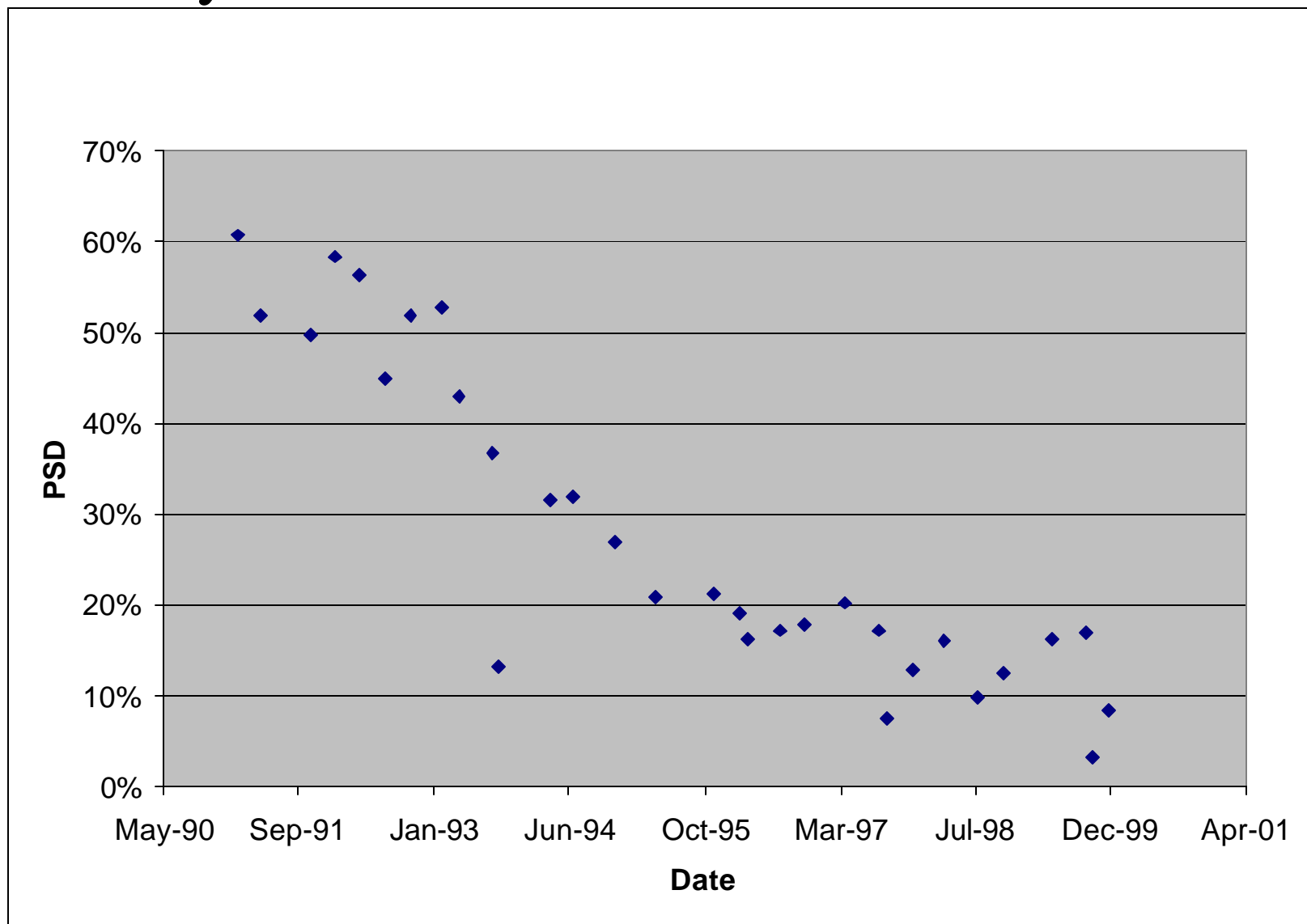
Lees Ferry CPUE Electrofishing



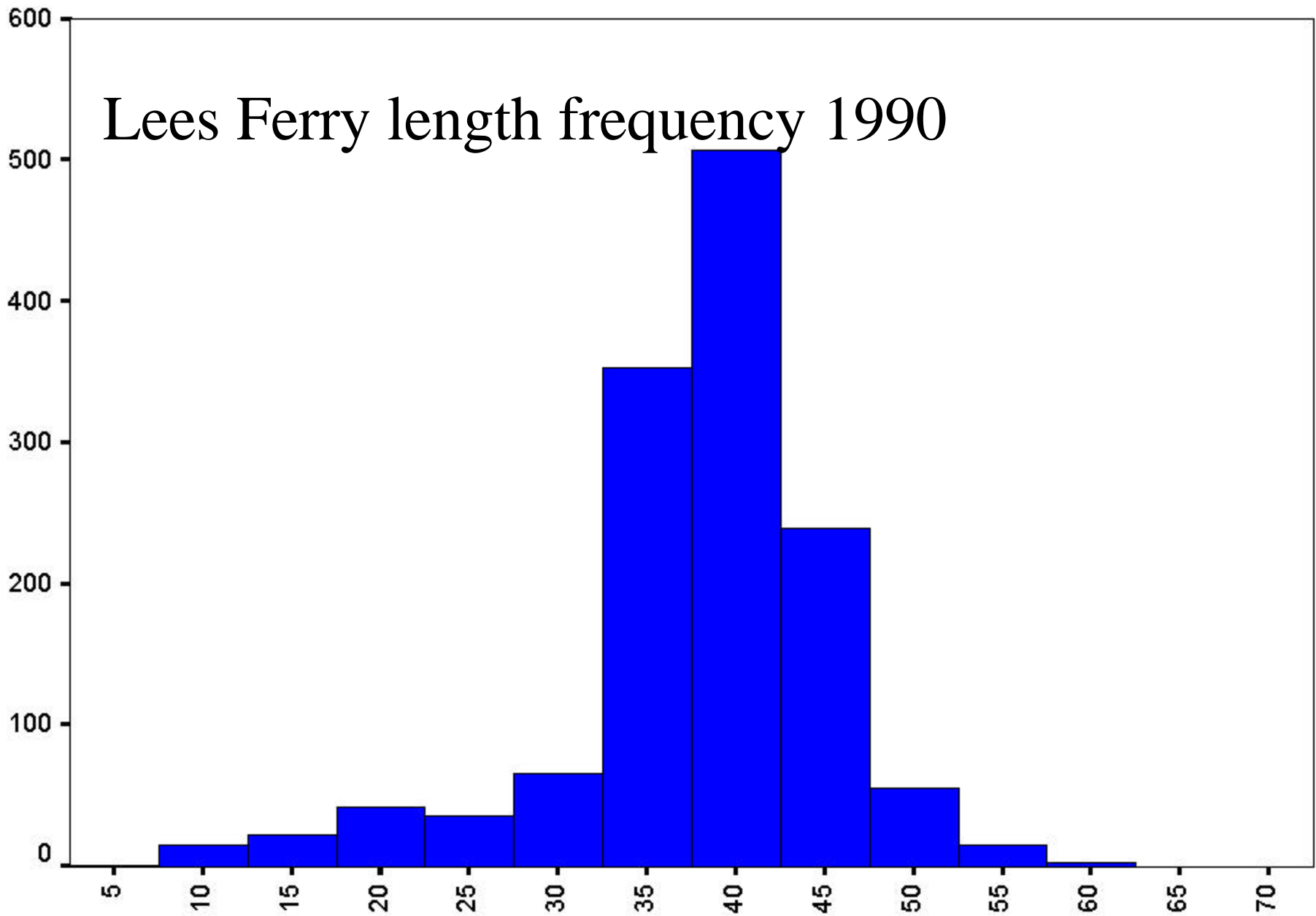
Lees Ferry Condition Factor (Kn)



Lees Ferry PSD

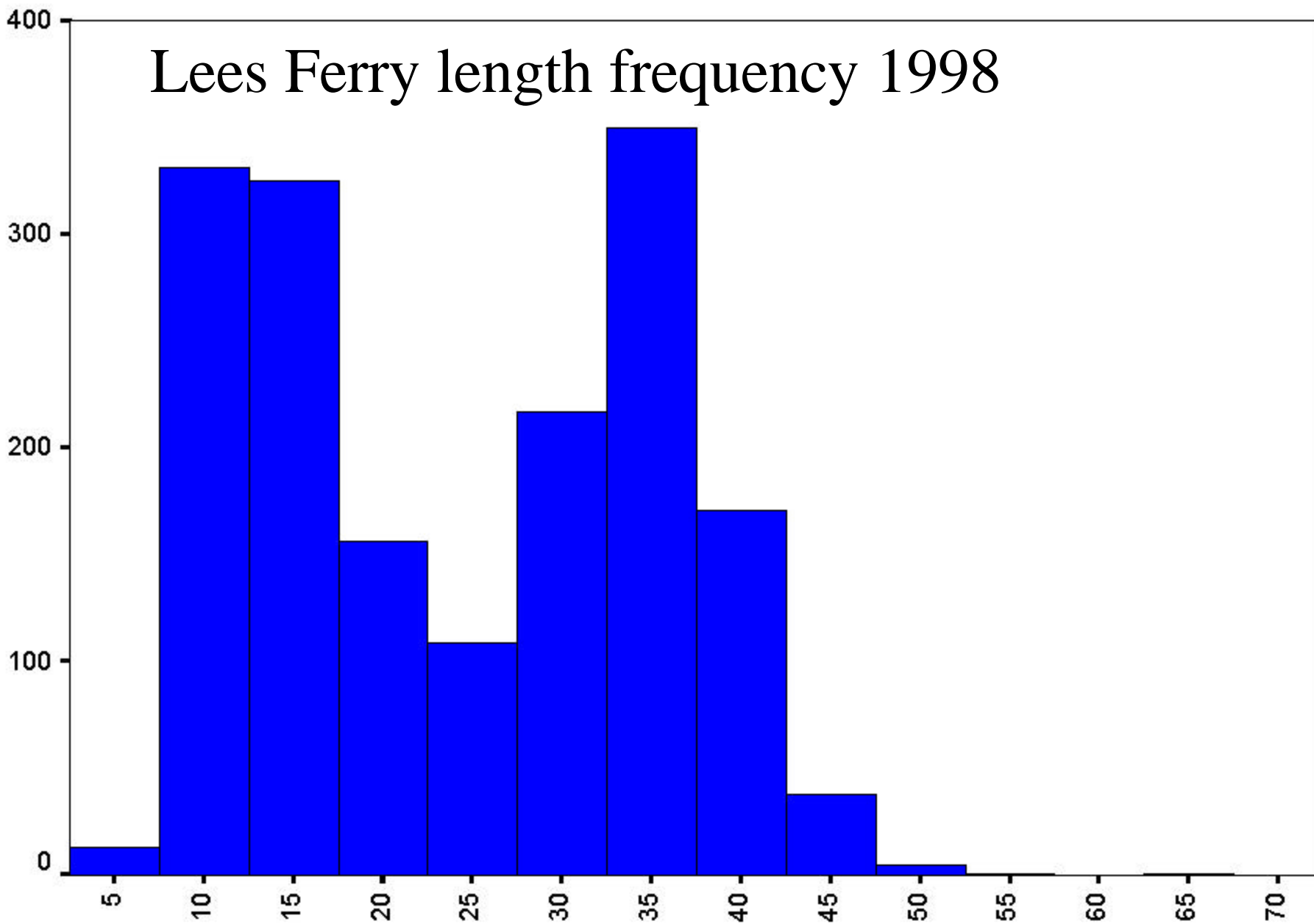


SET_YR: 1990



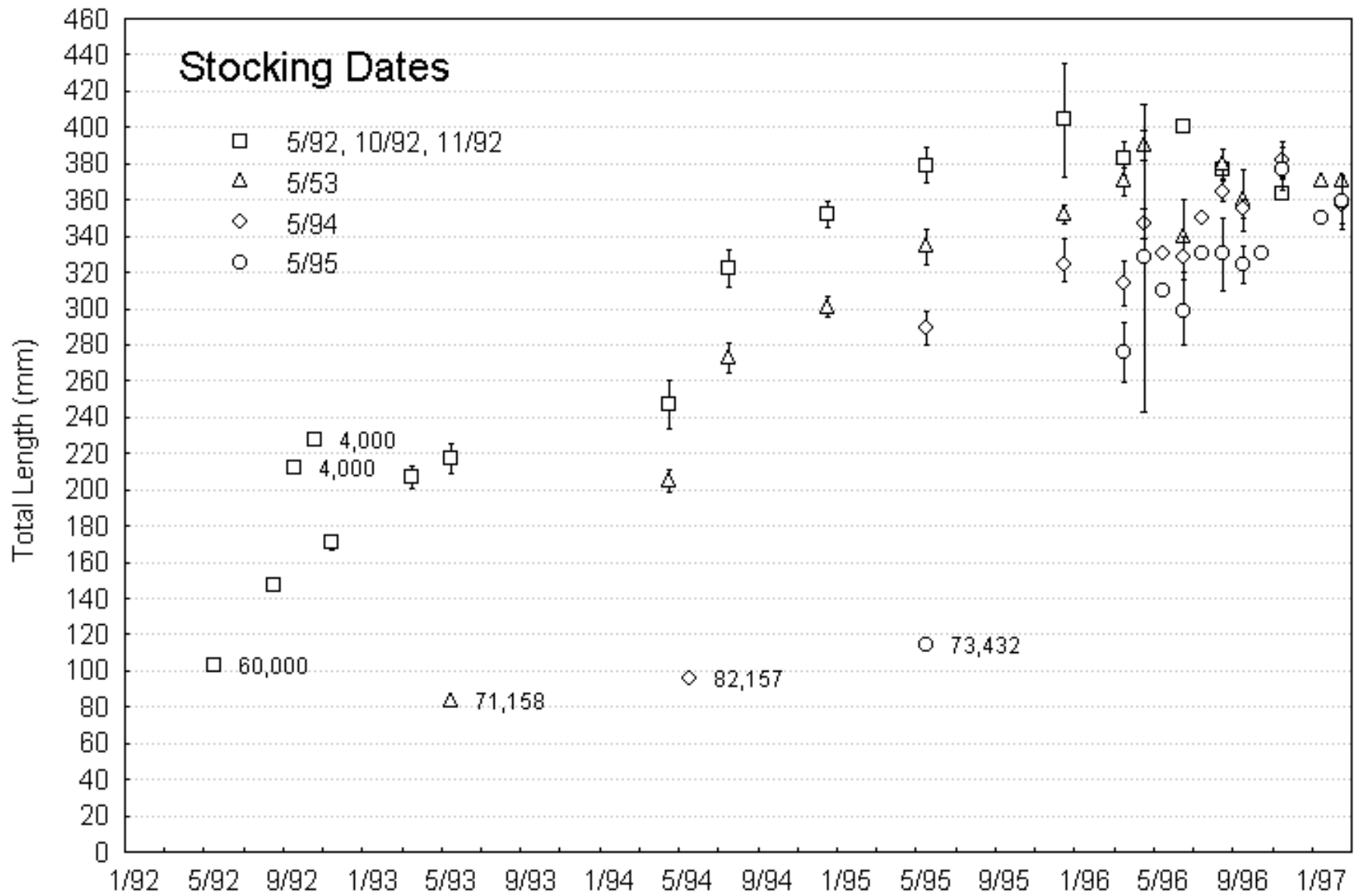
L INT

Lees Ferry length frequency 1998



LINT

Hatchery fish growth



Angler Use

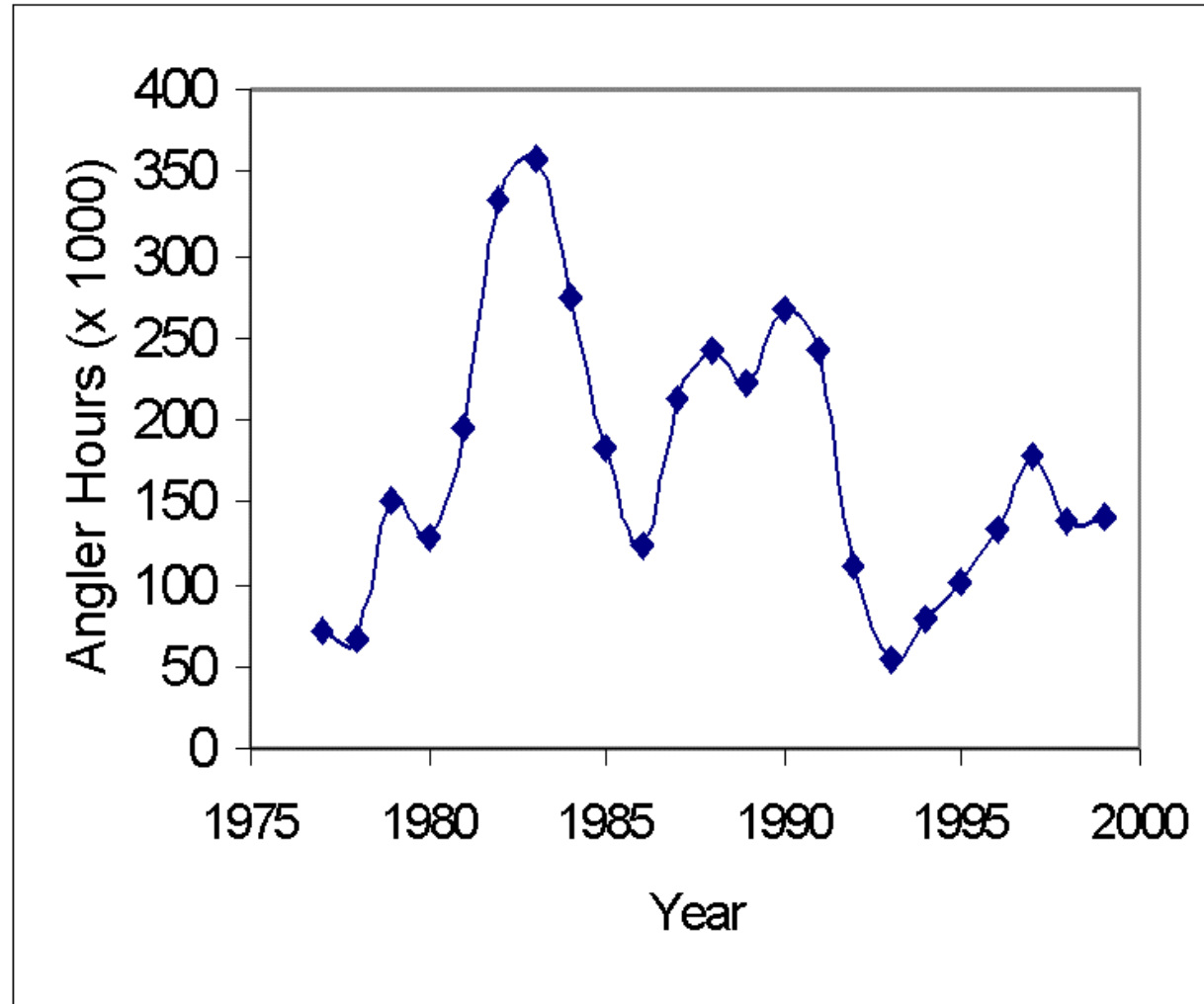


Figure 7. Annual use (angler hours), Lees Ferry 1977-1999.

Angler catch per hour

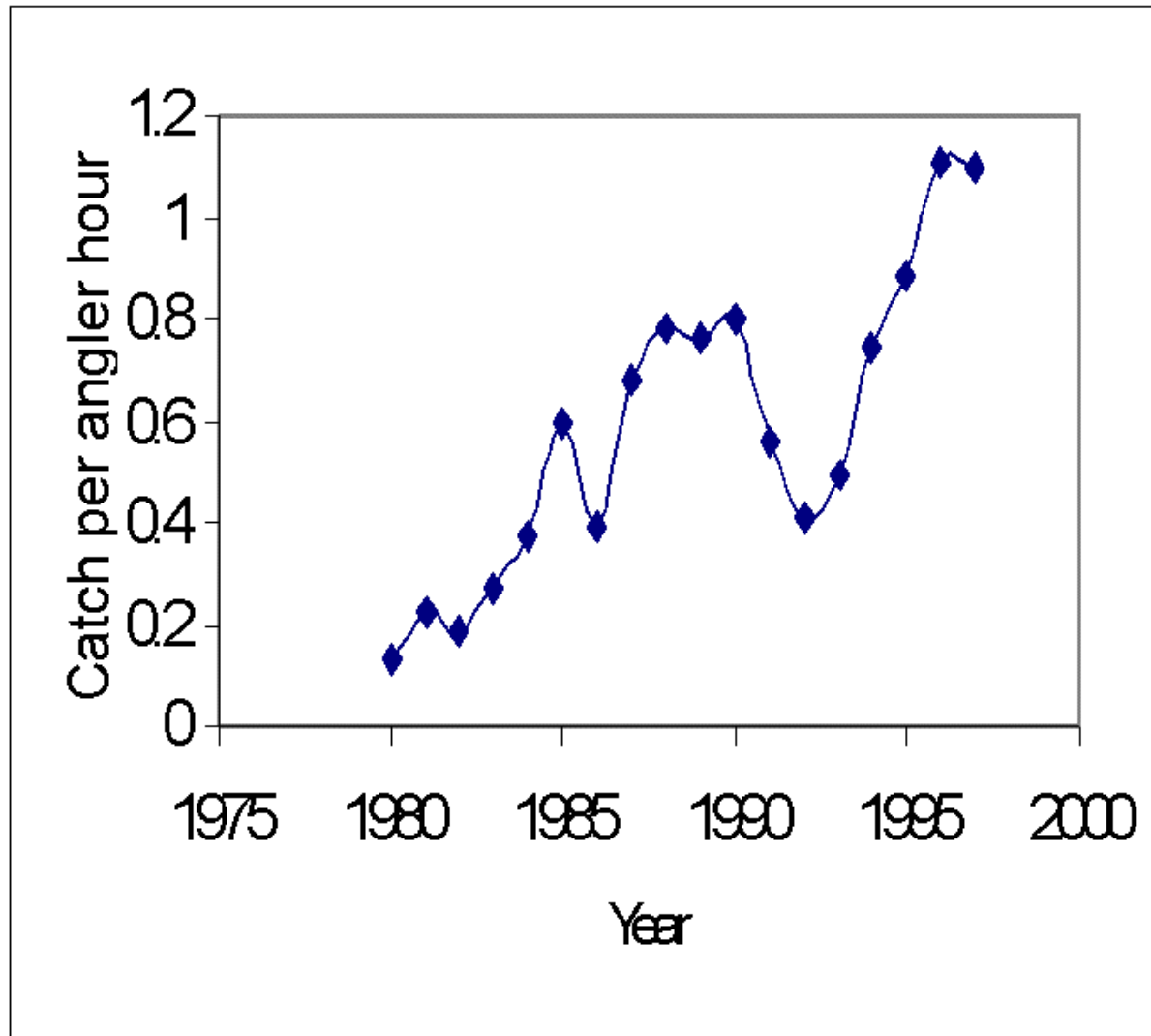
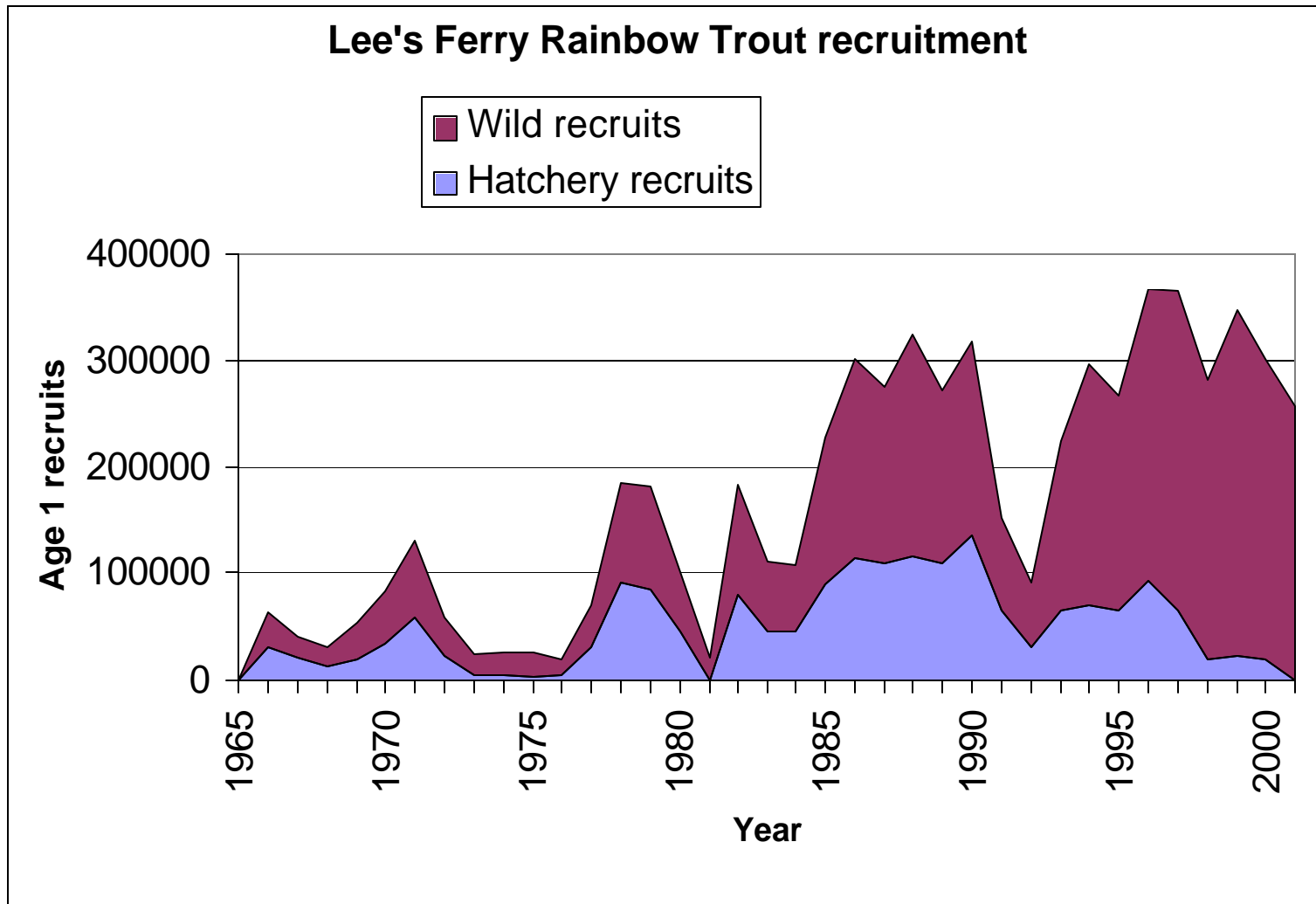


Figure 6. Mean catch of rainbow trout per angler hour, Lees Ferry 1980-1998.

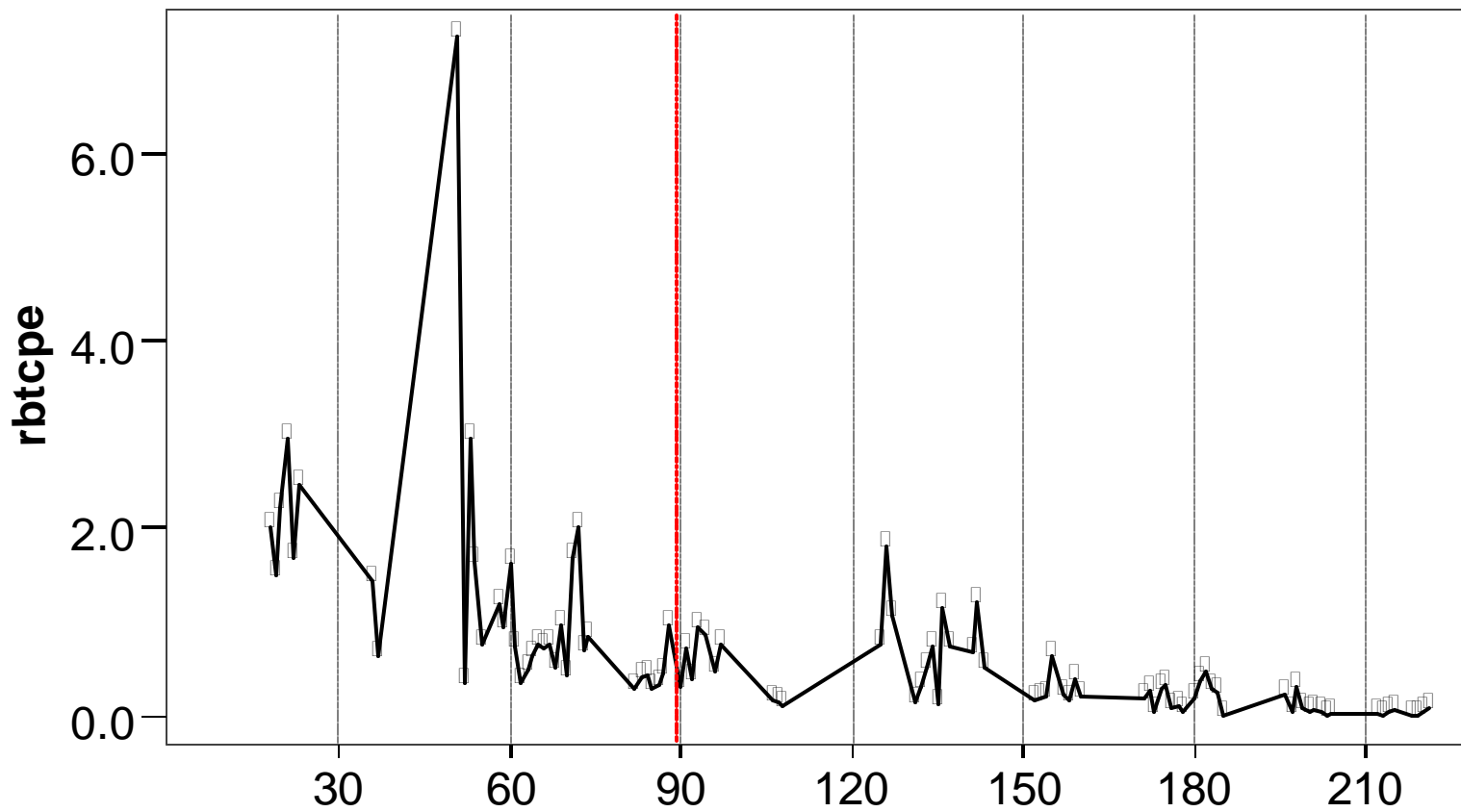
Natural Recruitment (Modeled)



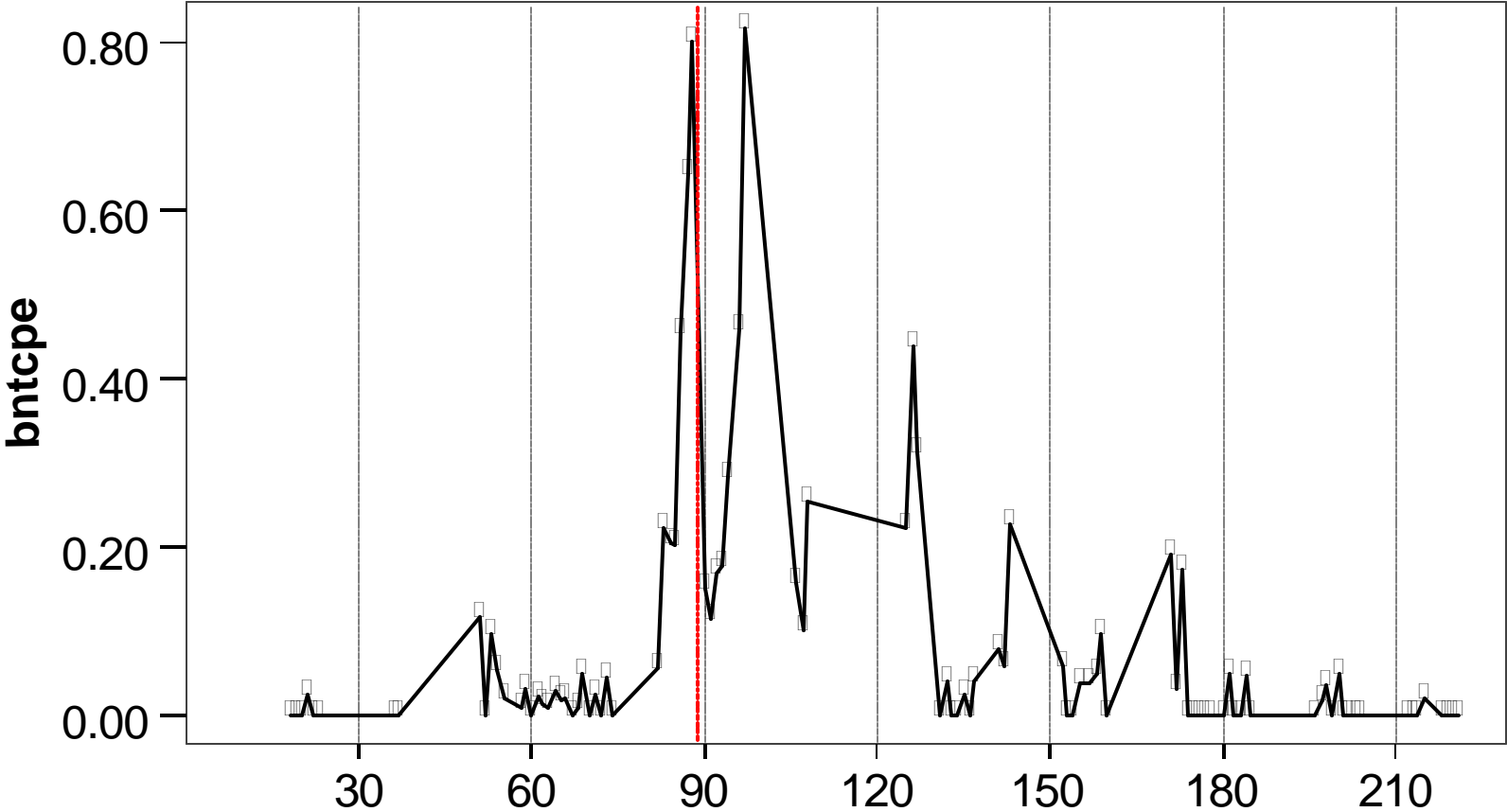
Preliminary Results Downriver Sampling 2000

- Sampling focused on rainbow and brown trout
- Depletion estimates
- Catch per effort (CPE) index sampling

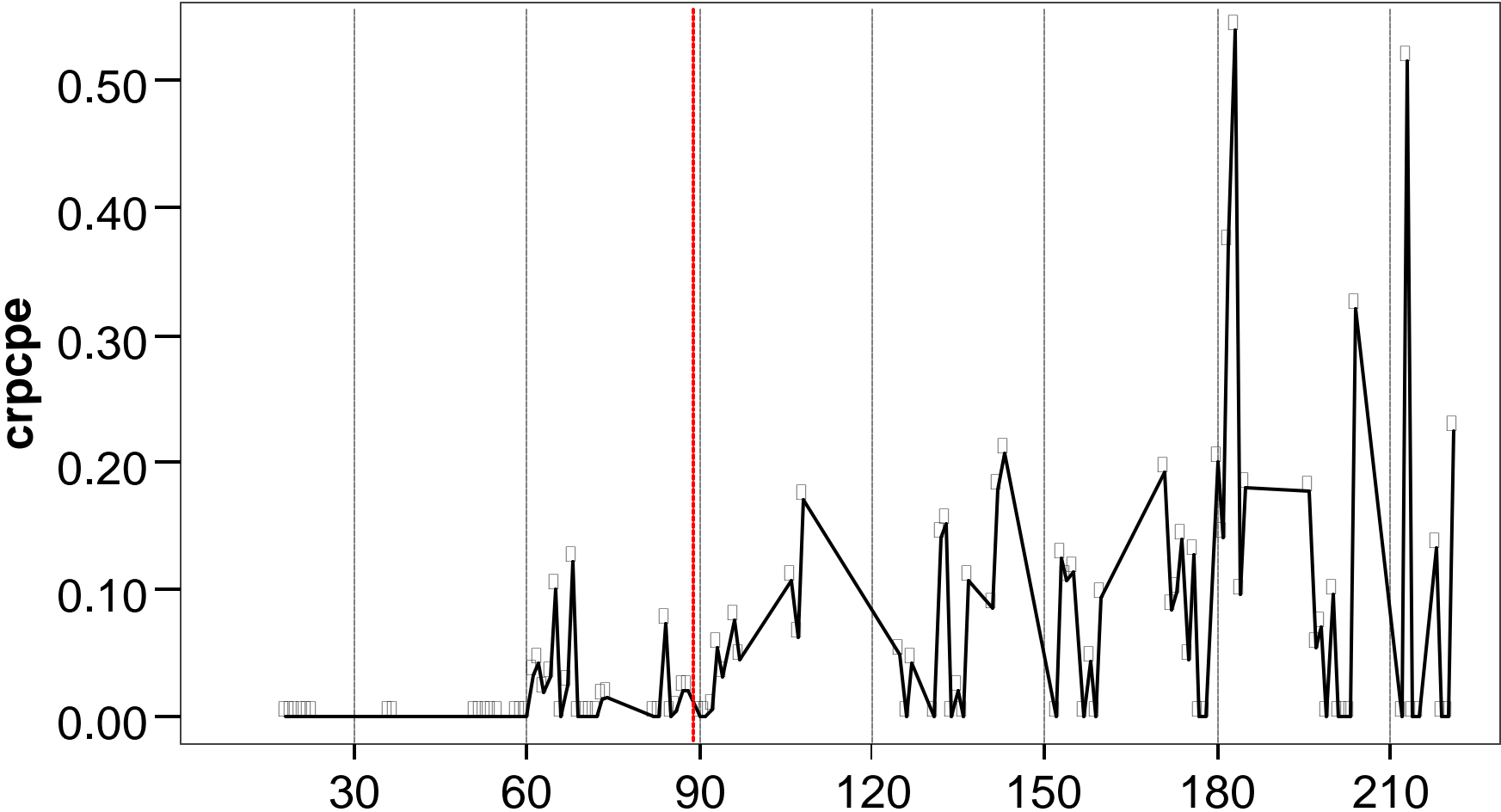
RBT CPE downriver 2000 by mile



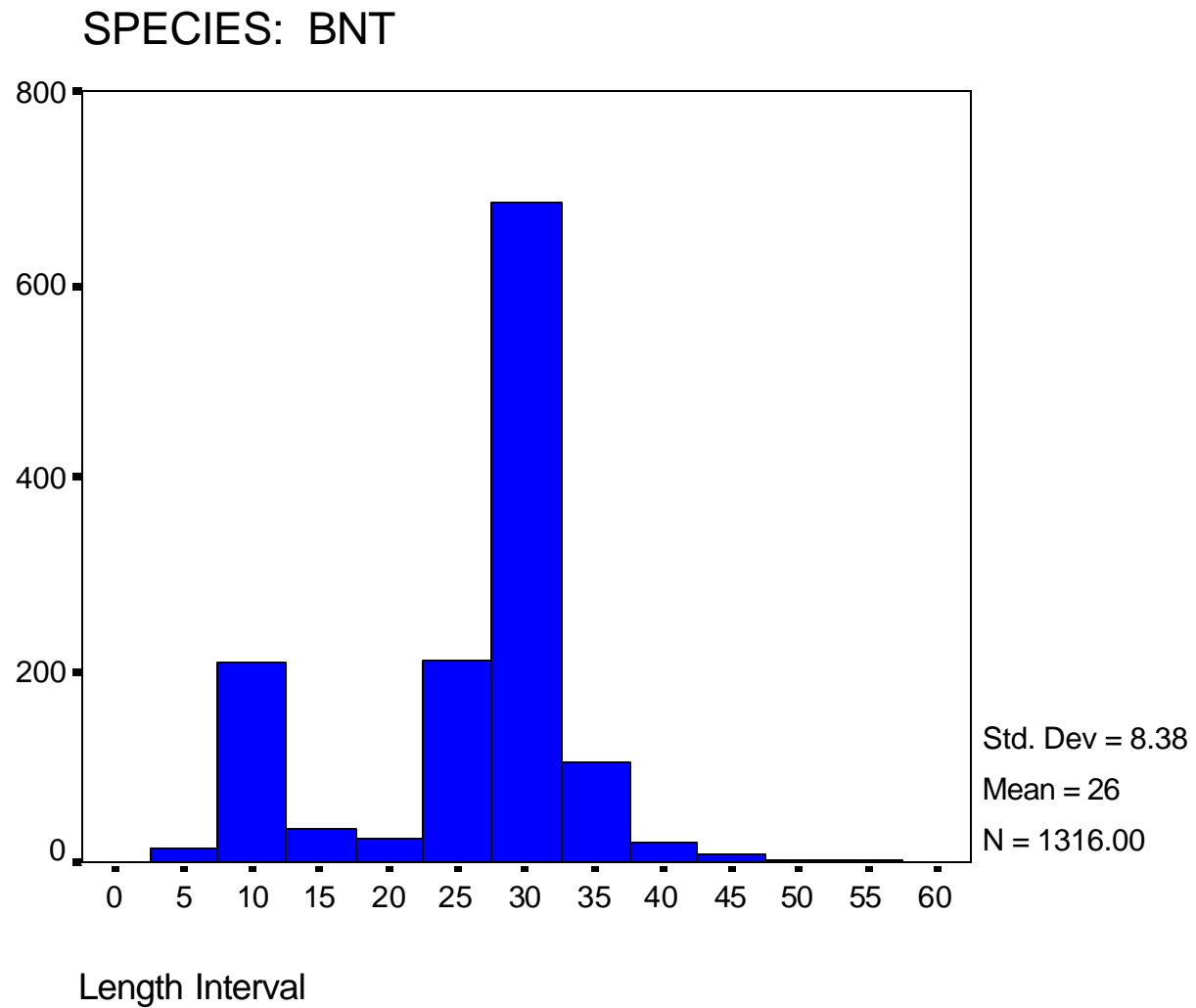
BNT CPE downriver 2000 by mile



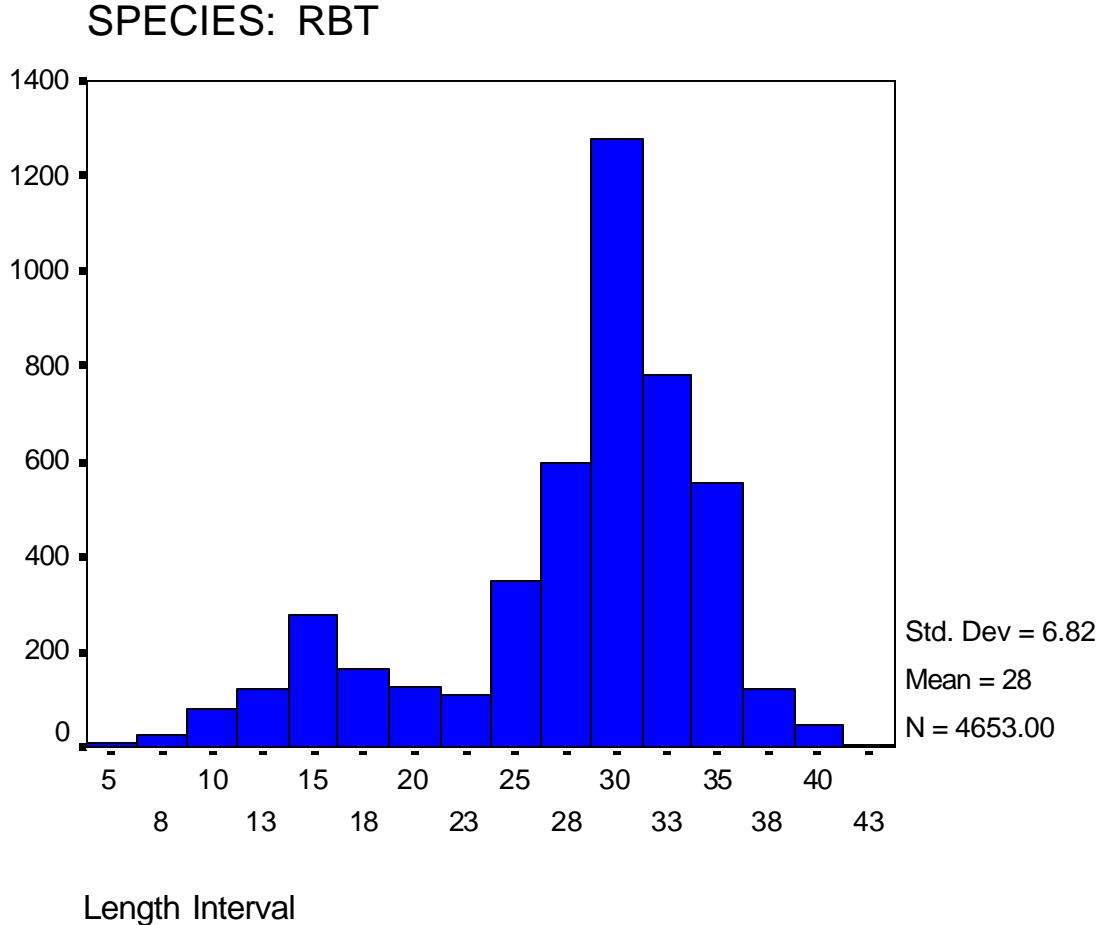
CRP CPE downriver 2000 by mile



Downriver BNT Length frequency 2000



Downriver RBT Length frequency 2000



Lees Ferry RBT length frequency 12/00

