



# United States Department of the Interior

GRAND CANYON MONITORING AND RESEARCH CENTER  
2255 N. GEMINI DR., MS-5000  
FLAGSTAFF, ARIZONA 86001

IN REPLY REFER TO:

GCMR-700  
RES-1.10

## MEMORANDUM

26 FEB 1998

From: Barbara Ralston, General Biologist *BR*

To: Technical Work Group Members

Re: Effects Matrix and Resource Criteria

Bob Winfree, Barry Gold and I met on February 21, 1998 to discuss the progress on the Resource Criteria. We agreed that the Effects Matrix and the Resource Criteria are complimentary documents. Essentially, the process used for decisions concerning a high flow includes consulting the Effects Matrix and its narrative as a step within the Resource Criteria "decision tree". Other variables that need consideration include the purpose of the high flow (i.e., there may be other objectives for a high flow besides sediment conservation), and how the flow event fits in with management objectives.

With these basic steps in mind, we developed a flow diagram that is a very preliminary representation of the processes involved in resource criteria decisions. This diagram is included in this memorandum. The following is a description of the diagram, and an explanation of what documentation will be developed in association with this diagram.

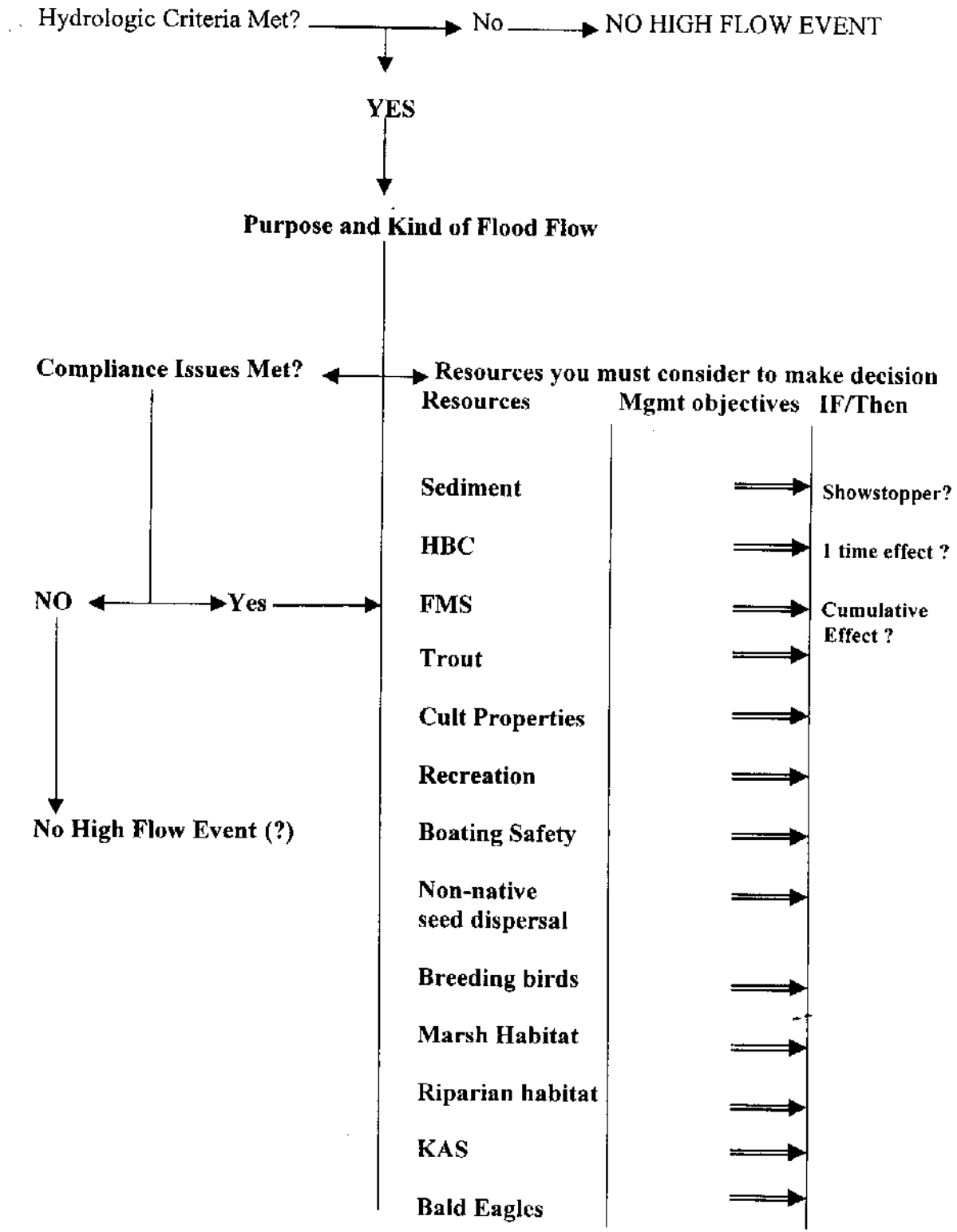
The first step in this process is determining if the hydrologic criteria are met. Meeting these criteria allow for the deliberation of Purpose and Kind of Flow that may occur. The purpose may not always be to conserve sediment and the kind of flow may not always be a short duration, 45K cfs release. This is a critical step in determining the resources that need to be considered when making a decision for a high release. From this point, the process runs in parallel with compliance issues being addressed and resource evaluation. While compliance steps are being completed, resources are being evaluated.

Resource evaluation is an iterative process involving the purpose of the flow, the management objectives for each resource, reviewing the effects matrix and its narrative for timing and potential impact information, and developing IF/THEN scenarios for the resources. The GCMRC would be integral in this process by providing "state of the resource" information, obtained from monitoring programs.

The evaluation process proceeds into determining if the impacts to a resource are likely to be a "showstopper", a one time effect, or have cumulative effects on any or all resources. This is an evaluation that cannot be made by the GCMRC. This step is an evaluation that is made by the person(s) making the final recommendation, based on the data made available by the GCMRC.

The state of the documentation that is needed to accompany this diagram is in development. It is contingent on the revision of both the management objectives, and the effect matrix. The narrative and the effects matrix is out for review by researchers with their comments to be returned by March 12, 1998. These comments and updated management objectives will be incorporated into this document prior to the March Technical Work Group Meeting. I will provide you this revised draft by March 16, 1998 for your review and subsequent discussion during the March 17-18 TWG meeting.

# RESOURCE CRITERIA DIAGRAM



2-26-98 bkaiston