

# Technical Work Group Chair Report and FY27 Work Plan Process

Adaptive Management Work Group Meeting

February 26, 2026

Seth Shanahan

TWG Chairperson

# Meetings

- Past

- February 3-5 (AR/TWG)
- December 11 (virtual)

- Future

- April 7-9 (Knowledge Workshop/TWG)

# TWG Items Reported Elsewhere on AMWG Agenda

- Hydrology, water quality, and operations
- LTEMP experiments
- Nonnative strategic plan actions
- Program evaluation (10-yr Review)
- Annual reporting/metrics
- Dragon Bravo fire

**Glen Canyon Dam Adaptive Management Program  
Adaptive Management Work Group Meeting, February 25-26, 2026**  
Hilton Garden Inn, Tempe, AZ

**Thursday, February 26, 2026**

**Register Here for Day 2:**  
[February AMWG Mtg Day 2 | Meeting-Join | Microsoft Teams](#)

## FINAL AGENDA

START TIME <sup>1</sup> (Duration)	Thursday, February 26, 2026 Topic, Presenter, and Purpose <sup>2</sup>
8:30 MST (:30)	<p><b>Welcome and Administrative:</b> Andrea Travnicek, Secretary’s Designee to the Adaptive Management Work Group</p> <ul style="list-style-type: none"> <li>▪ Introductions and Determination of Quorum (13 members)               <ul style="list-style-type: none"> <li>○ Facilitator: Becki Bryant</li> </ul> </li> </ul>

# Brief Reflections

---

Hydrology, water quality, and  
operations

---

LTEMP experiments

---

Nonnative strategic plan actions

---

Program evaluation (10-yr Review)

---

Annual reporting/metrics



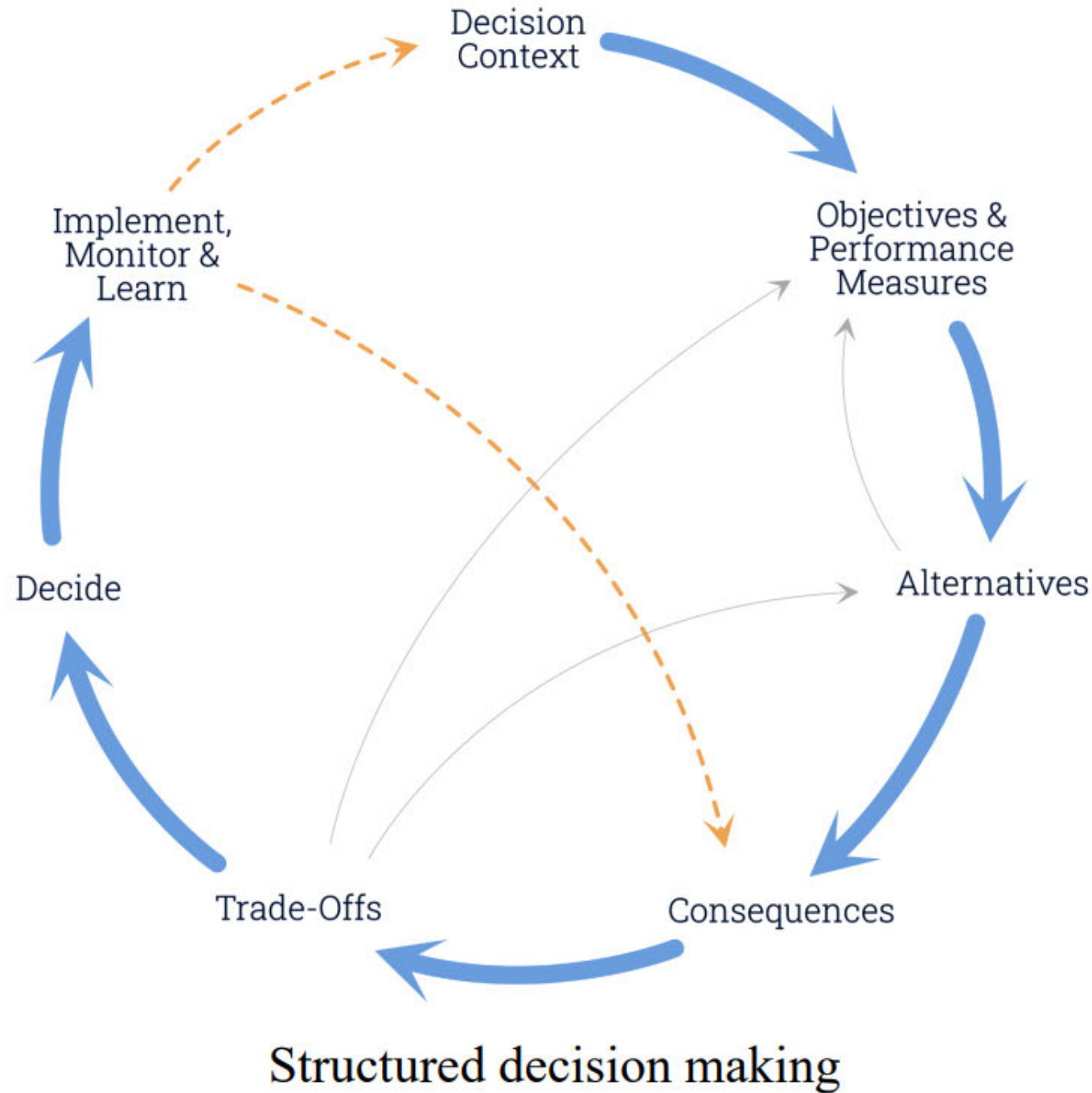
# Trout ad hoc group

Chair – David Rogowski

~34 members

# Charge

The Trout Ad Hoc Group (TAHG) is charged with reviewing the factors negatively impacting the Lees Ferry rainbow trout fishery and proposing strategies that could be pursued/considered to help achieve the LTEMP rainbow trout fishery goal.



# Approach

Issue	Objective	subobjective	Option0	Option1	Option2
Lack of recruitment	Increase YOY, and subadults recruitment	increase abundance of RBT that could spawn (health)	no action	stock larger adult fish for spawning	
		increase yoy	no action	stocking fingerlings	
		increase spawning habitat	no action	remove vegetation, algae?	more spring HFE

COLOR CODES
likely
potentially
neutral
maybe not
not likely

Considerations  
Consequences  
Trade-offs

Name	<i>John Smith</i>		your name	
<b>short-term recommendation</b>	<i>Will this action lead to a better RBT fishery?</i>	<i>Are you in favor of this action?</i>	<i>Will this action lead to a better RBT fishery?</i>	<i>Are you in favor of this action?</i>
Stock rainbow trout parr/ fingerlings to increase the catch rate of anglers to one fish per hour.	<i>yes</i>	<i>support</i>		
Continue mechanical removal of warm water nonnatives, while considering sampling limits on current cultural concerns, environmental conditions, timing, practices, and location removal regularity(smallmouth bass, green sunfish, brown trout, etc.).	<i>maybe</i>	<i>against</i>		
Continue Cool Mix releases for primary and secondary benefits to lower water temperatures, higher DO, and potentially higher phosphorus.	<i>maybe</i>	<i>neutral</i>		
Conduct spring high flow experiments	<i>maybe</i>	<i>support</i>		
Conduct a nutrient supplementation experiment.	<i>don't know</i>	<i>neutral</i>		
<b>part 1: Will this action lead to a better RBT fishery? no, maybe, yes, don't know</b>				
<b>part 2: Are you in favor of this action? abstain, support, neutral, against</b>				



# Overarching TWG Reflections





TWG representatives remain concerned about the rigor in which the program can sustain GCPA efforts given resource constraints

# GCDAMP River Schedule



Updated on December 11, 2025	LAUNCH	T/O	Project Description
<b><u>December</u></b>			
TRGD 25-III	10-Dec	15-Dec	Lees Ferry trout population monitoring
<b><u>January</u></b>			
Grand Canyon NPS TRGD 26-I	22-Jan	27-Jan	Lees Ferry trout population monitoring
<b><u>February</u></b>			
Glen Canyon NPS FGS 26-I	9-Feb 11-Feb	10-Feb 27-Feb	Quality of Water/fine grain sediment monitoring
<b><u>March</u></b>			
Grand Canyon NPS Glen Canyon NPS TRGD 26-II	16-Mar 23-Mar 25-Mar	20-Mar 27-Mar 30-Mar	Lees Ferry trout population monitoring
<b><u>April</u></b>			
SCN 26-I LCR-HBC 26-I MSF 26-I Hopi 2026	2-Apr 14-Apr 16-Apr 18-Apr	20-Apr 24-Apr 1-May 27-Apr	Survey Control Network/Channel Mapping LCR HBC, camps at three locations on Little Colorado River System wide fish monitoring-AZGFD Hopi Cultural Monitoring

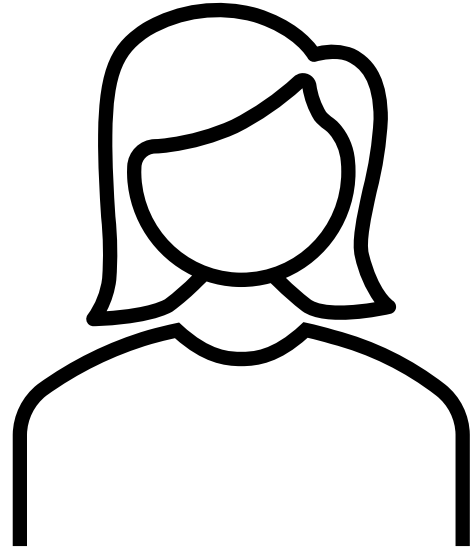
- 
- Continue towards integrated reporting and assessments including settling on routine adaptative management practices
  - Fast-track invasive fish species Strategic Plan long-term actions
- 

# Future TWG Agenda Items

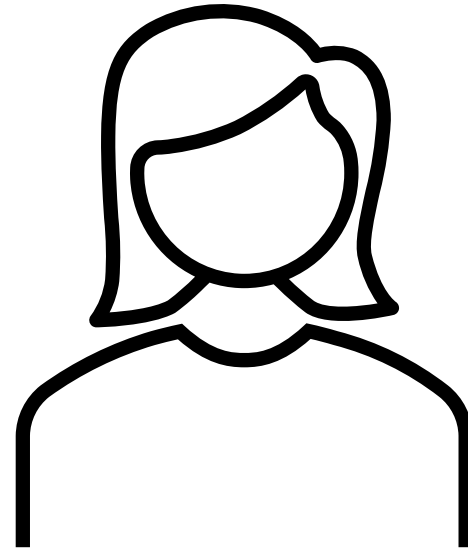
- Knowledge workshop discussions
- BAHG budget and after action review recommendations
- TAHG recommendations
- Adaptive management procedures

# FY27 Work Planning Process

# New BAHG Leadership



Michelle Garrison,  
BAHG Chair/Co-  
Facilitator



Megan Hellman,  
BAHG Co-  
Facilitator

*Thank  
you  
Colorado!*

# Work Plan and Budget Process (Year-3)

**Table 1 (continued).** Approximate timelines for the development and implementation of the TWP. Dates shown are estimated targets. Dates in parentheses are shown which implement the 2025-27 TWP cycle for reference.

Month	Year-3 (2026)	Year-4 (2027)
January	Annual reporting meeting and information synthesis (2 days) followed by 1-day TWG meeting to review initial results and findings of TWP. Potential TWP changes may be identified.	Process starts again under year 1.
February	BAHG/agencies/tribes meetings to consider mid-work plan adjustments to TWP, February through March.	
March		
April	Consider mid-work plan adjustments at TWG meeting. BAHG and TWG considers potential changes to the Fiscal Year 3 TWP based on criteria in section 2.7.	
May		
June	TWG considers and recommends mid-work plan adjustments to TWP and a recommendation for Fiscal Year 3 (2027) budget.	
July		

## Section 2.7 Criteria - Scientific requirement or merit

New information gained during the implementation of monitoring and research projects may result in a need to alter methods, scope, or timelines in the work plan or substantially alter or eliminate a project. This is a science need based on the experience of implementing an already approved project. This does not represent a shifting priority (e.g., policy change), but a scientific learning process which results in needed modifications to carry out the goals of the Program.

## Section 2.7 Criteria - Administrative needs

Administrative, policy, or programmatic changes may occur within the time-frame of an approved TWP. Examples might include the mitigation of an impact resulting from ESA, NHPA, or tribal consultation, a change in the “overhead” charges of a federal or state agency, a significant reduction of the balance of available funds, or a failure to secure permits. As soon as an administrative event occurs that affects the TWP, GCMRC (or relevant agency – such as DOI) will notify the TWG.

## Section 2.7 Criteria - New initiatives

New initiatives may be brought up for discussion by members during BAHG or TWG budget discussions (see Table 1) for consideration by Reclamation and GCMRC. These new initiatives may need to be considered by the GCDAMP Program Manager prior to requesting either GCMRC or Reclamation to develop a proposal for mid-work plan consideration. If DOI determines it is beyond the scope of a mid-work plan change, then the initiative could be considered during the development of the next work plan. Given that the budget will likely be fully accounted for, direction on funding source within the current budget will be required for discussion with the GCDAMP Program Manager. Revisions must comply with the Budget Principles (see Section 2.1).

Budget  
Availability



# Prior and Next Steps

- Initial feedback from TWG provided to Reclamation, GCMRC, and cooperators
- Need for AMWG feedback (now)
- BAHG meetings
  - Discuss budget guidance
  - Provide direction to Reclamation, GCMRC, and cooperators
- BAHG recommendation to June TWG
- TWG recommendation to August AMWG