



— BUREAU OF —
RECLAMATION

Glen Canyon Dam Adaptive Management Program – Knowledge Workshops

Bureau of Reclamation

AMWG Charter



— BUREAU OF —
RECLAMATION

- 4. Description of Duties.** The duties or roles and functions of the AMWG are in an advisory capacity only and all tasking shall be directed by the Designated Federal Officer (DFO).

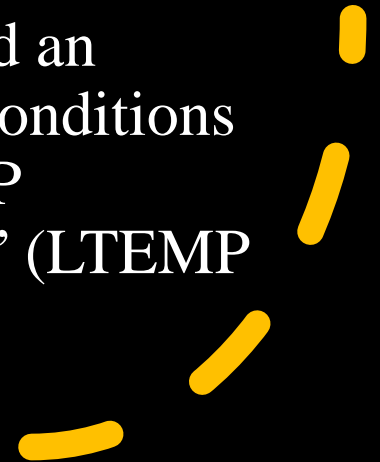
They are, as applicable, to:

- a. Establish AMWG operating procedures.
- b. Advise the Secretary in meeting environmental and cultural commitments including those contained in the Record of Decision for the Glen Canyon Dam Long-Term Experiment and Management Plan Final Environmental Impact Statement and subsequent related decisions.
- c. Recommend the framework for the AMP policy, goals, and direction.
- d. Recommend resource management objectives for development and implementation of long-term monitoring plan, and any necessary research and studies required to determine the effect of the operation of Glen Canyon Dam on the values for which Grand Canyon National Park and Glen Canyon National Recreation Area were established, including but not limited to, natural and cultural resources, and visitor use.
- e. Review and provide input on the report identified in the Act to the Secretary, the Congress, and the Governors of the Colorado River Basin States. This annual report includes discussion on dam operations, the operation of the AMP, status of resources, and measures taken to protect, mitigate, and improve the resources defined in the Act.
- f. Annually review long-term monitoring data to provide advice on the status of resources and whether the AMP goals and objectives are being met.
- g. Review and provide input on all AMP activities undertaken to comply with applicable laws, including permitting requirements.



Why?

- FY28-30 Triennial Work Plan
 - Background on each resource
 - Better understanding of what we know and what we don't know
- LTEMP 10-Year Review
 - “DOI will conduct a comprehensive review after October 1, 2027, to evaluate what has been learned from the experimental studies and an evaluation of resource conditions after 10 years of LTEMP operational experience.” (LTEMP ROD p. 20-21)



Goals



Provide baseline background information on the goals of LTEMP to create shared understanding of the resource.



Identify potential knowledge gaps from stakeholders and discuss ways to try to address those gaps moving forward.

Planning Team



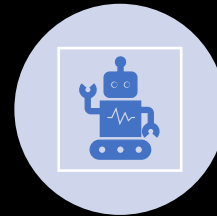
Small Group – 5-10 people



TWG Members – Liaison to the TWG where they gather feedback for the workshop



Tribal Member – Liaison to the Tribes where they gather feedback for the workshop



Reclamation – assist with information gathering, logistics, presenting



GCMRC – Coordinate on information gathering and presenting



Facilitator (Udall) – Lead on managing workshop, assist in building agenda

Planning Team – Humpback Chub, Other Native Fish, Nonnative Fish

Workshop 1 (Humpback Chub, Other Native Fish Species, Nonnative Invasive Species)	Workshop 2 (Archaeological and Cultural Resources, Recreation (Whitewater), Sediment, Riparian Vegetation)	Workshop 3 (Natural Processes, Rainbow Trout and Recreation (Angling)	Workshop 4 (Program Logistics/Processes, Tribal Resources)
Emily Young	TBD	TBD	TBD
Erik Stanfield (Tribal)	TBD	TBD	TBD
Ryan Mann	TBD	TBD	TBD

Feedback/Comments – Feb. 11

- What are your main interests or priorities for the fish workshop? What would you like to take away from it?
- What key challenges do you feel need to be addressed in the fish workshop? (e.g., data gaps, coordination, communication, uncertainty, tradeoffs)
- Are there specific topics or issues that you feel are worth briefing or discussing at the fish workshop?
- Are there concepts related to the fish programs that you would like more explanation or clarification on?
- What do you need to know to make better-informed recommendations for each fish resource goal?

Feedback/Comments – Feb. 11

- Is there **anything** we haven't covered that you think is important to mention about planning the fish workshop?
- Do you have any feedback on the current metrics for each fish resource?
- Do you have any feedback on the program's desired outcomes and/or next steps for the fish workshops?
- Optional: If you would like to be contacted about your response, you may provide your name and email below.
- If you have any feedback related to process, workshop design, or workshop content that you would prefer to share anonymously, please reach out directly to the Udall Foundation facilitator, Seth Cohen (cohen@udall.gov).

Early Feedback

- How do current hydrological conditions change the long-term actions needed to protect native fishes?
- What do we know about other nonnative species (e.g., crayfish, walleye)?
- Did the slough modification work?
- Risk assessment to the decline of Humpback Chub under differing conditions (environmental, nonnative fish, etc.)
- How can genetics and eDNA be used to confidently monitoring fish species? What limitations exist?

Still Accepting Written Feedback!

- Contacts
 - Emily Young, Ryan Mann, Erik Stanfield – TWG and Tribal Liaisons
 - Bill Stewart, Jeremy Hammen – Reclamation
 - Mark Anderson - GCMRC
 - Seth Cohen - Udall
- Coordinate with TWG representatives for the Survey
- Will close at the end of week (Feb. 27)

Discussion:

- Comments/questions/feedback for Humpback Chub, Other Native Fish, Nonnative Fish workshop
 - What would you like to take away?
 - What key challenges lie ahead?
 - Specific topics/issues/concepts you would like to learn about?
- General Workshop comments/questions/feedback