



2019 LTEMP Vegetation Mitigation River Mission

April 16 – May 1 2019





LTEMP EIS

- Negative impacts of Glen Canyon Dam operations on riparian health
 - Encroachment of invasive species
 - Spread of exotic species
 - Long – term decline in native plant communities

LTEMP Vegetation Project

FY 2018

GLCA mitigation work

GRCA planning, database and plant production

FY 2019

GLCA monitoring and additional treatments

GRCA mitigation work and plant production

FY 2020

GLCA monitoring and additional treatments

GRCA monitoring and additional treatments

FY 2021 - 2022



2019 River Mission Timeline

FY 2018 Funding (9/30/2018)

FY 2019 Funding

Agreement with GLCA (2/14/2019)

River logistics contracting (2/15/2019)

Ancestral Lands task order (2/22/2019)

River Mission Goals

- Reduce vegetation encroachment into campsites
- Treat exotic species benefitting from LTEMP flows
- Return geomorphic processes at sediment-depleted cultural sites
- Engage with Tribal Partners
- Test new mobile GIS data collection applications



River Mission Work

■ NPS

■ 4 Staff

- Supervisor
- Botanist
- Exotics
- Database / GIS

■ Ancestral Lands

■ 2 Crews

- Gallup
- Whiteriver

■ GCMRC

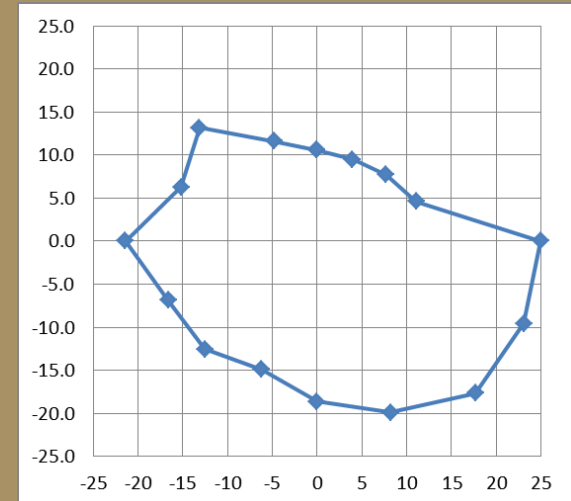
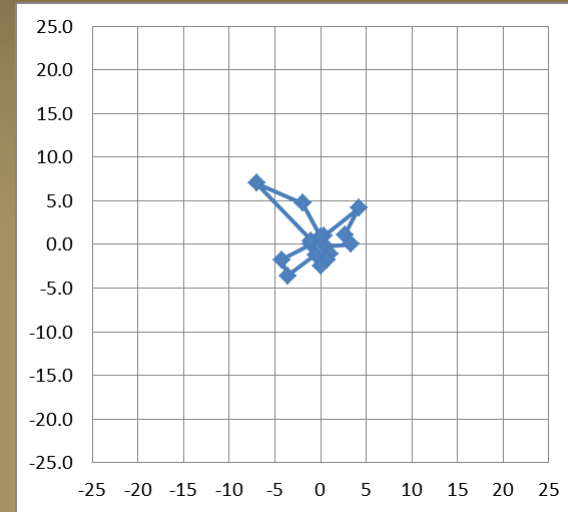




River Mission Work

Encroachment

- Define treatment centers
- Pre-treatment radial measurements
- Removal / Disposal
- Post-treatment radial measurements





River Mission Work

Exotics

- Define treatment areas for camelthorn, perennial pepperweed, and Russian thistle
- Snip and Drip
- Removal / Disposal
- Post-treatment polygon measurement

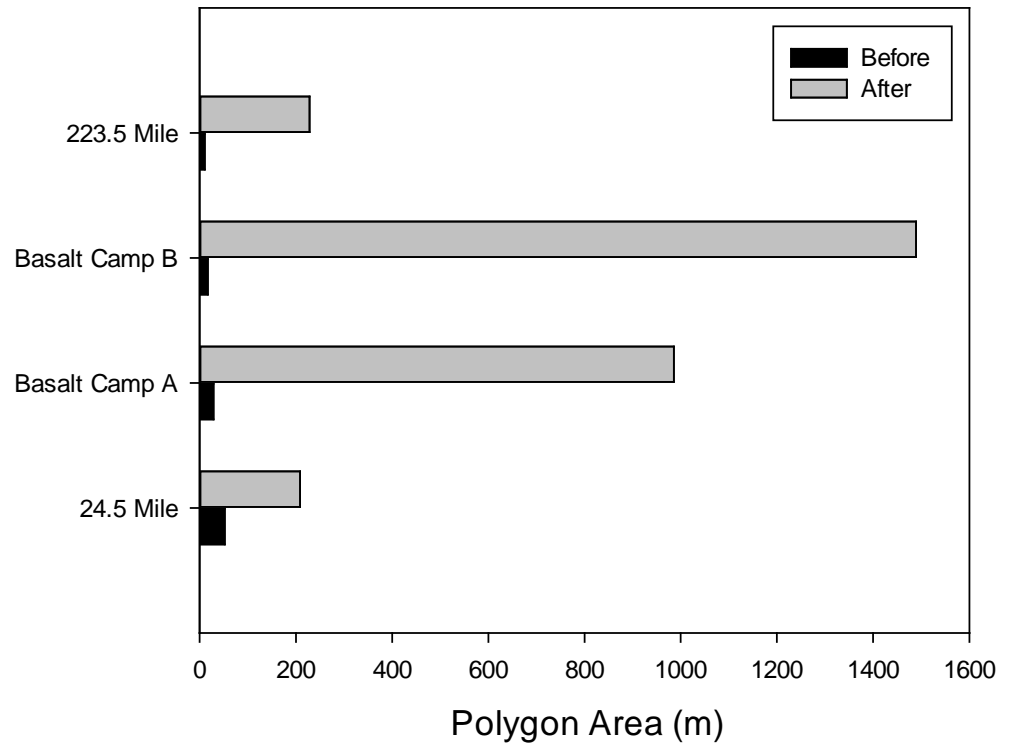




River Mission Work



Cultural Site Source Area Clearance



River Mission Work

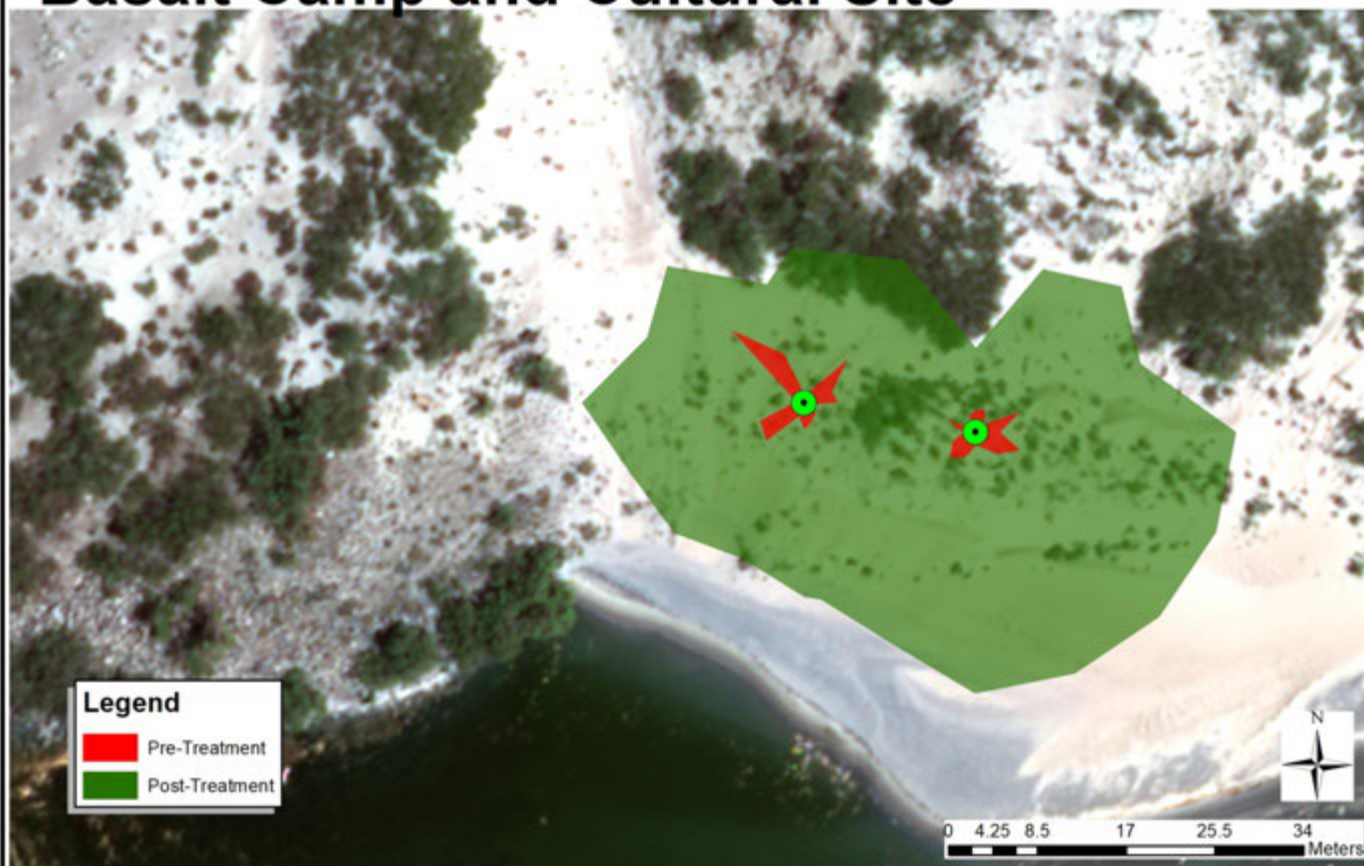


Grand Canyon National Park
Arizona

National Park Service
U.S. Department of the Interior



Basalt Camp and Cultural Site



Legend

-  Pre-Treatment
-  Post-Treatment

Produced by GRCA SRM Wilderness Recreation

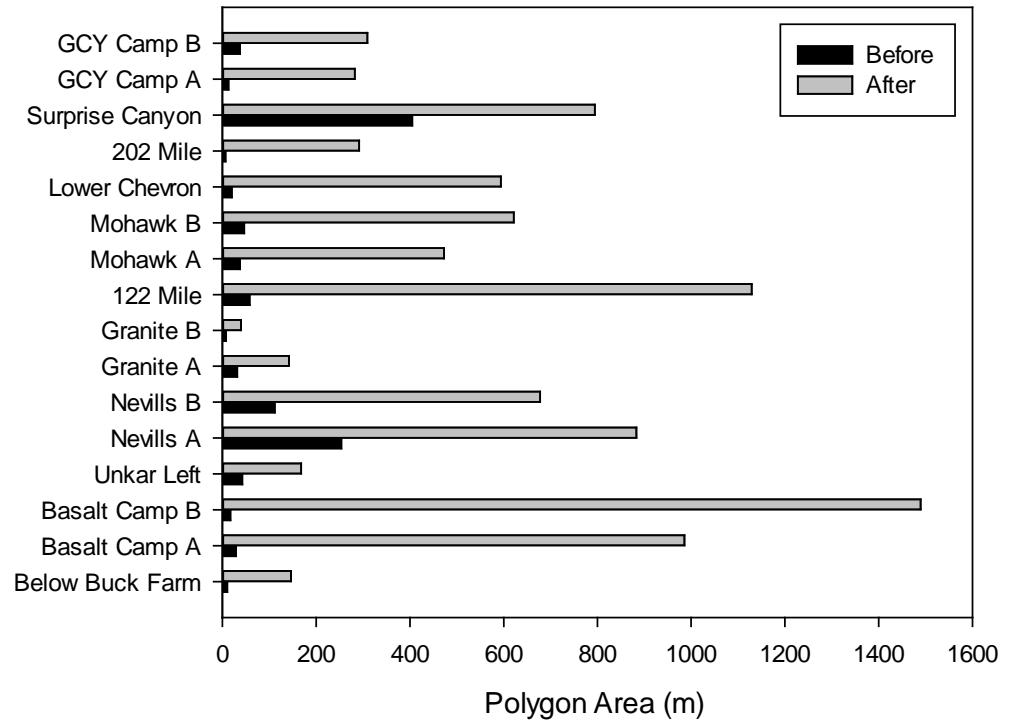
Aug 2019

FILE: Untitled.mxd



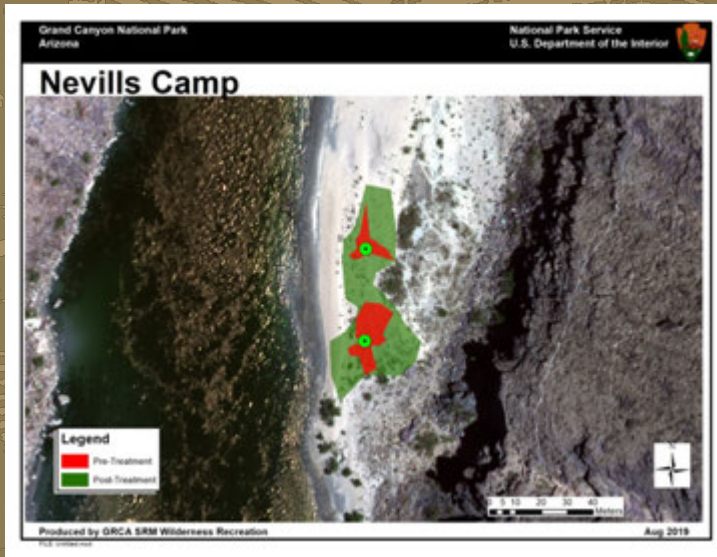
River Mission Work

Campsite Encroachment Clearance





River Mission Work





River Mission Work

Exotics

- Three sites treated for extensive camelthorn and Russian thistle, and perennial pepperweed

Camelthorn:

- 5,050 plants

- 7.68 ha (21.3 ac)

Perennial pepperweed:

- 362 plants

- 0.21 ha (.58 ac)

Ravenna grass

- 11 plants

- .0002 ha (.006 ac)





2019 LTEMP Vegetation Mitigation River Mission

