

Glen Canyon Dam Adaptive Management Work Group
Agenda Item Information
February 22-23, 2012

Agenda Item

Grand Canyon National Park Fishery Management Planning Process

Action Requested

✓ This is an information item.

Presenters

Martha Hahn, AMWG member, National Park Service; and Chief, Science and Resource Management, Grand Canyon National Park

John Jordan, AMWG member, Representative for Recreational Fishing

Previous Action Taken

N/A

Relevant Science

N/A

Background Information

Grand Canyon National Park is in the pre-scoping phase of an environmental assessment for its Fisheries Management Plan. Martha Hahn will discuss the timeline of the planning process, which anticipates scoping to begin Spring 2012.

John Jordan will describe the involvement of the recreational fishers, guides, and area economic interests in the planning process.

National Park Service
U.S. Department of the Interior
Grand Canyon National Park



NPS Fish Management Plan Grand Canyon National Park and Glen Canyon National Recreation Area

Martha Hahn, Chief, Science and Resource Management
Grand Canyon National Park
February 23, 2012

EXPERIENCE YOUR AMERICA

NPS and the Planning Process

- **Federal actions are defined as**
 - projects, activities, or programs funded in whole or in part under the direct or indirect jurisdiction of a federal agency, including those carried out by or on behalf of a federal agency;
 - those carried out with federal financial assistance;
 - those requiring a federal permit, license, or approval; and
 - those subject to state or local regulation administered pursuant to a delegation or approval by a federal agency.

NPS and NEPA

- The NEPA process is always triggered at the “proposal” stage, or when an agency is considering a goal and is “actively pursuing different means of accomplishing that goal” (40 CFR 1508.23) if implementing the goal would have environmental impacts.
- The proposal stage is during or immediately following the feasibility stage (1502.5(a)).
- Environmental planning is useful in defining goals, particularly in broader planning, such as for an entire park or park unit.

NPS and NEPA (con't)

- NEPA's intent is to encourage planning for conservation and resource management and integration of scientific and technical information into management decisions, rather than an after-the-fact “compliance” effort.
- A well-done NEPA analysis provides useful information on environmental pros and cons (i.e., impacts) of a variety of reasonable choices (alternatives).
- It is an essential prelude to the effective management of park resources.



Overarching Goals of the NPS Fish Management Plan

- Maintenance of a healthy recreational trout fishery in the Lees Ferry area of Glen Canyon National Recreation Area
- Maintenance of a thriving native fish community in waters within Grand Canyon National Park

Project Area for the NPS Fish Management Plan

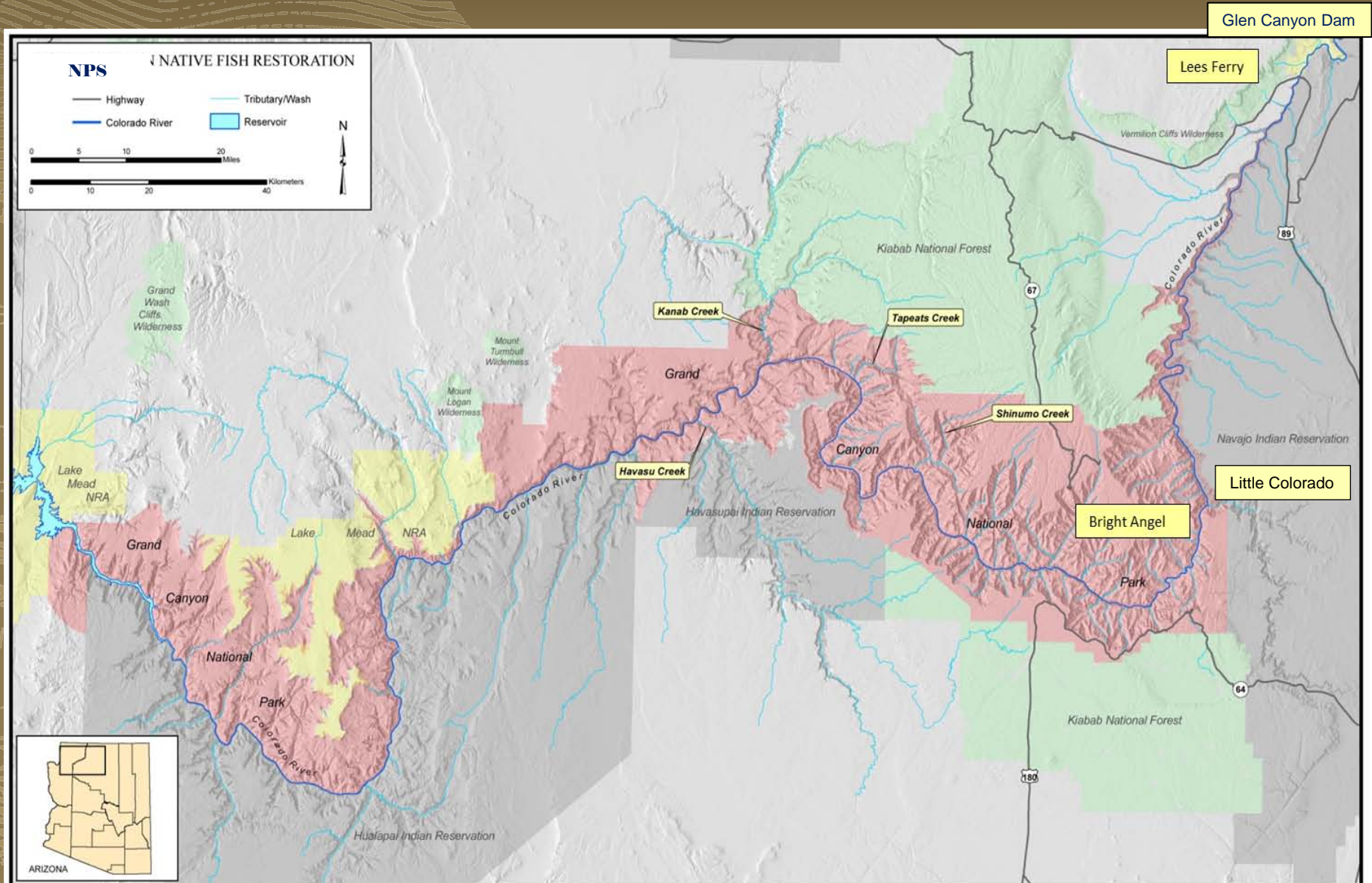


Figure 1. General location of the project area.

Fish Plan Milestones and Activities

■ 2010

- March - announced intent to develop comprehensive fisheries management plan (TWG Non-native fish control workshop)
- May - developed white paper describing plan process and broad goals; held workshop in Flagstaff to develop objectives for segments of river and tributary inflow reaches
- July - held workshop to present goals/objectives, develop and rank a list of management actions that could be proposed to reach management goals/objectives for fish in GRCA. Participants included Tribes, AZGFD, GCMRC, NPS, BOR, Grand Canyon Wildlands Council, and anglers.

■ 2010-2012:

- Summarized 2010 workshop results (to be included in plan)
- Translocations, nonnative control, research, monitoring and data collection to inform planning process

2012 Planning and NEPA Timeline

- January – coordinate goals with Tribes
- February – CE for GLCA/GRCA goals signed
- March – NPS Workshop (Page, AZ) and internal scoping
- April – Public scoping 30 days, begin Tribal Consultation
- May to July – analyze comments, develop EA, determine preferred alternative, write Biological Assessment
- August – Release draft EA w/preferred alternative, begin Formal Consultation with USFWS, SHPO
- Early January (about 4.5 months after initiation of Formal Consultation) - FONSI