



# Update on the General Core Monitoring Plan for the Glen Canyon Dam Adaptive Management Program

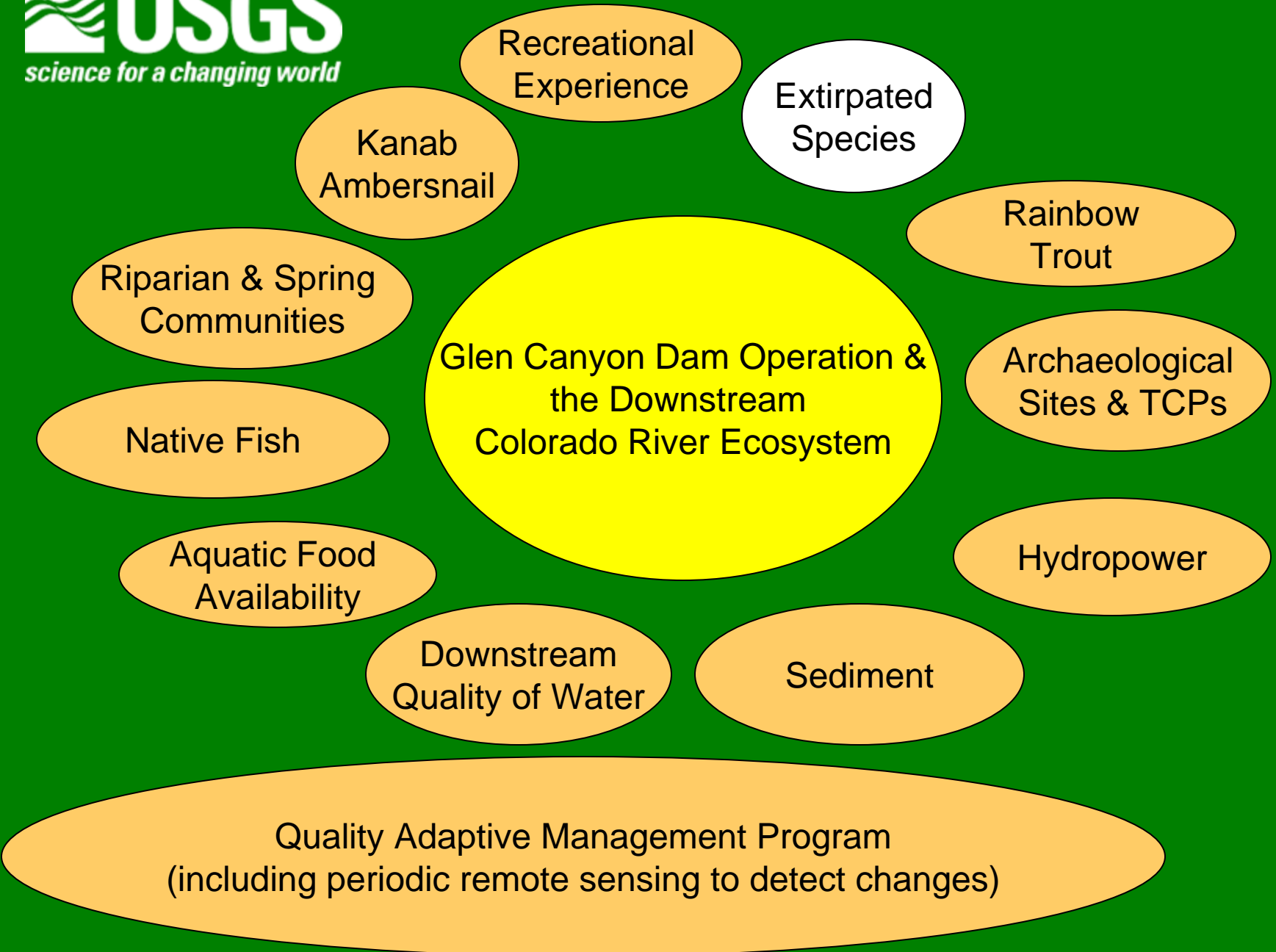
Presented to AMWG by  
Ted Melis and John Hamill

Grand Canyon Monitoring and Research  
Center

August 12, 2009



# Monitoring Data - Key to Adaptive Management



# 1<sup>st</sup> Step in a 4 Step Process (see MRP)

## Elements:

- Proposed monitoring projects for each resource of concern
- Promotes an ecosystem approach to monitoring of the CRE
- Addresses concerns of 1994 and 1999 review panels
- Estimates costs for each of the proposed projects
- Identifies staffing needs to conduct long term monitoring
- Provides TWG with “entire package” of monitoring efforts
- Proposes a strategy for administration & data management

# Timeline - Next Steps

- August 2009 - Plan currently in review by Science Advisors
- Summarized review comments back to GCMRC by September 1st
- Sept. 4<sup>th</sup> - GCMRC and Science Advisors discuss review comments
- Revision of CMP & responses to review comments by October 15th
- Distribute revised CMP to TWG October 16th
- Information needs workshop with TWG first week in November
- Incorporate TWG input and seek approval of general plan in FY 2010