

Grand Canyon

U.S. Department of the Interior
National Park Service

Grand Canyon National Park



EXPERIENCE
YOUR
AMERICA

RESEARCH AND ACCESS PERMIT FACILITATION FOR GRAND CANYON MONITORING AND RESEARCH CENTER PROGRAMS IN GRAND CANYON NATIONAL PARK AND GLEN CANYON NATIONAL RECREATION AREA

**Interagency Agreements from 1998-2005
between GRCA and GCMRC**

Grand Canyon

U.S. Department of the Interior
National Park Service

Grand Canyon National Park



EXPERIENCE
YOUR
AMERICA

Research Permits Coordinator:

- **Point of communication between investigators and park officials:**
 - ✓ **natural and cultural resource managers**
 - ✓ **river and backcountry offices**
 - ✓ **aviation coordinator**
 - ✓ **wilderness coordinator**
 - ✓ **housing office**
 - ✓ **fee management**

- **Ensures completion of peer and administrative reviews (including NEPA and wilderness use)**



PERMITS OFFICE WORKLOAD

Annual Average 2002-2004

	GCMRC		Others	
	#	%	#	%
Research Permits	61	41	89	59
Investigators (principal and co-principal investigators)	94	47	104	53
Trips (river, backcountry, overflights)	43	65	23	35
Participants	579	86	97	14
Minimum Requirement Analyses	34	87	5	13

Grand Canyon

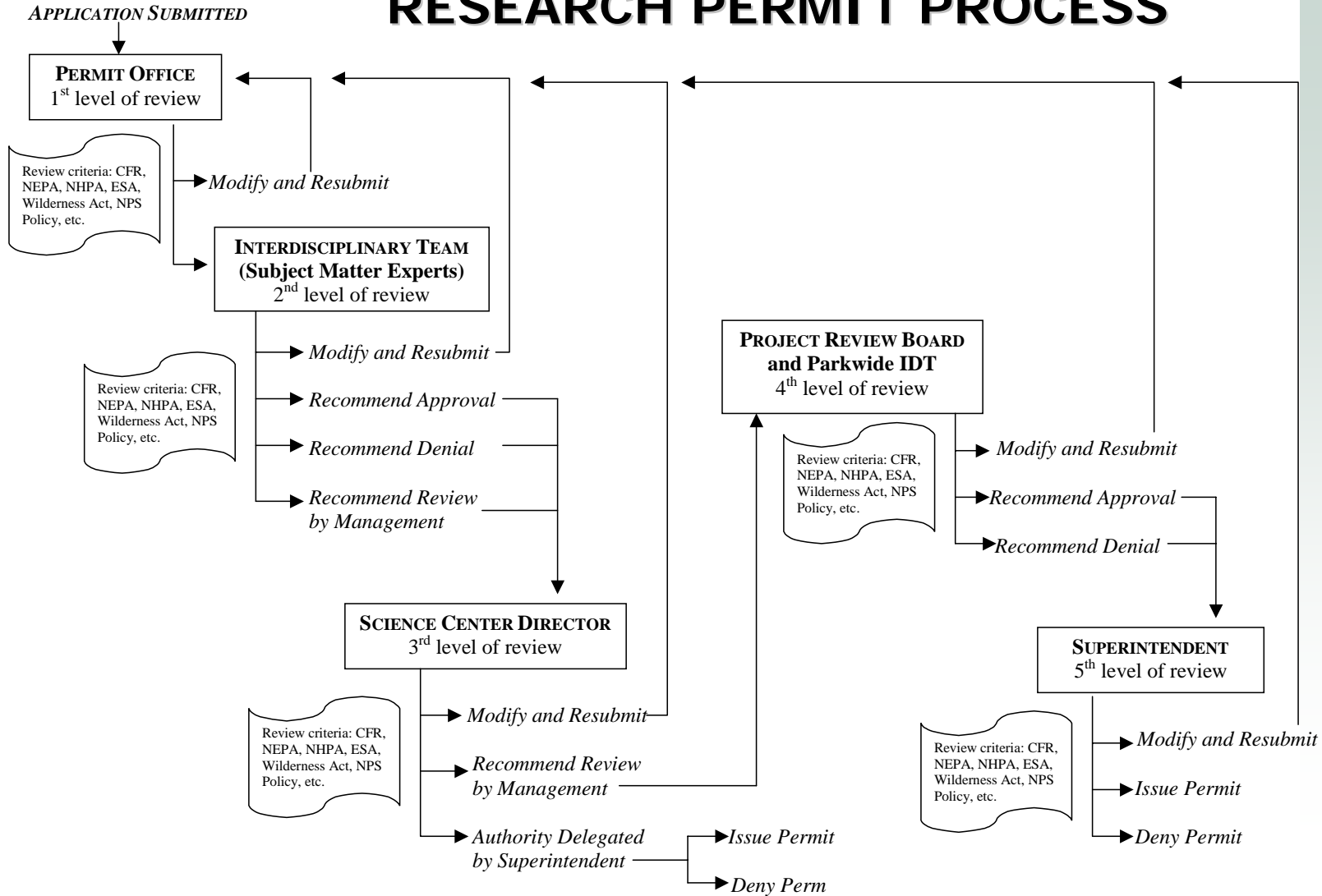
U.S. Department of the Interior
National Park Service

Grand Canyon National Park



EXPERIENCE
YOUR
AMERICA

RESEARCH PERMIT PROCESS





ACCESS PERMITS

RIVER AND BACKCOUNTRY PERMITS

- River and Backcountry Permits Office (Approval)
- River Rangers (Check-In, Tracking)

FLIGHT PERMITS

- Aviation Coordinator (Flight Request, Flight Coordination)
- Science Center Director (Recommendation)
- Superintendent (Approval)

WILDERNESS MINIMUM REQUIREMENT ANALYSIS

- Wilderness Coordinator (MRA)
- Science Center Director (Recommendation)
- Superintendent (Approval)



ADMINISTRATIVE RIVER TRIPS ANNUAL AVERAGE FOR 2000-2003

	GCMRC		GRCA	
	#	%	#	%
River Trips	43	69	19	31
User Days	6,695	61	4,315	39
Participants	579	64	327	36

Grand Canyon

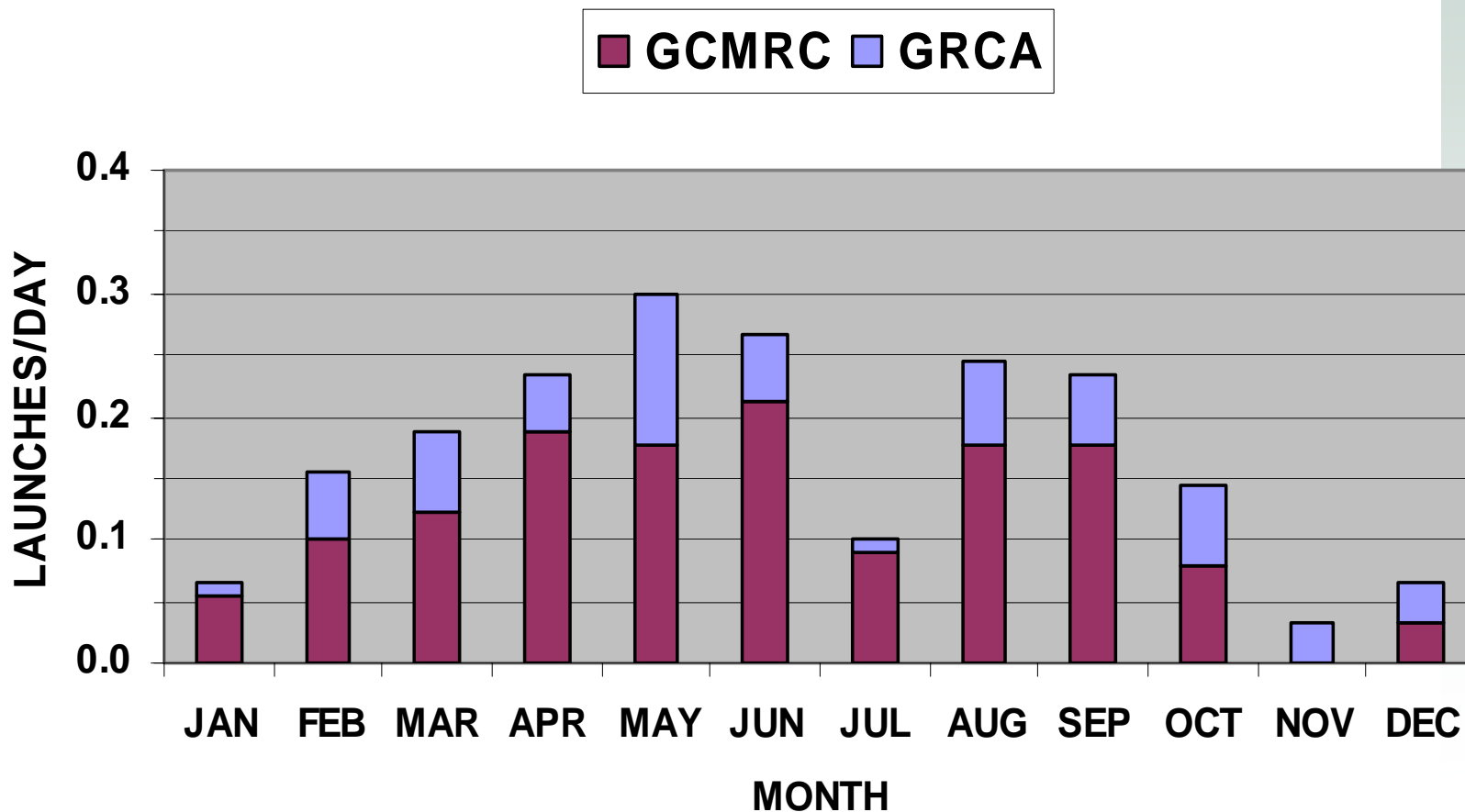
U.S. Department of the Interior
National Park Service

Grand Canyon National Park



ADMINISTRATIVE RIVER TRIPS (MONTHLY AVERAGE 2000-2003)

EXPERIENCE
YOUR
AMERICA



Grand Canyon

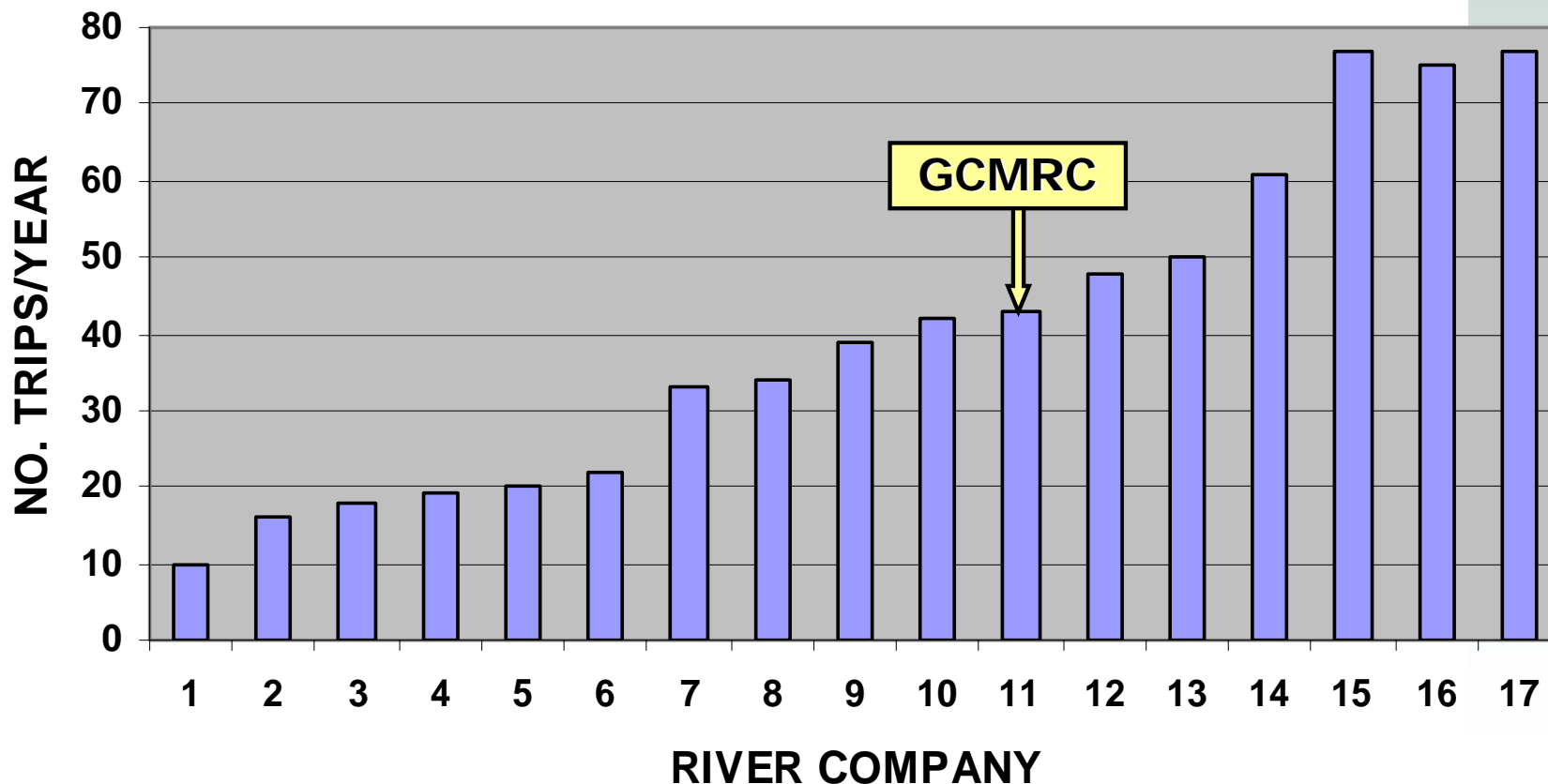
U.S. Department of the Interior
National Park Service

Grand Canyon National Park



COMMERCIAL OPERATORS AND GCMRC NUMBER OF RIVER TRIPS PER YEAR

EXPERIENCE
YOUR
AMERICA



Grand Canyon

U.S. Department of the Interior
National Park Service

Grand Canyon National Park



EXPERIENCE
YOUR
AMERICA

APPROPRIATIONS ACT, P.L. 101-512

- **NPS "...may recover all costs of providing necessary services associated with special use permits..."**
- **Income from permittees is limited to the recovery of costs (including any applicable overhead) associated with extra services necessary to support the permittee**

UNITED STATES CODE TITLE 16 3(a)

- **NPS has the authority to "...recover all costs of providing necessary services associated with special use permits..."**