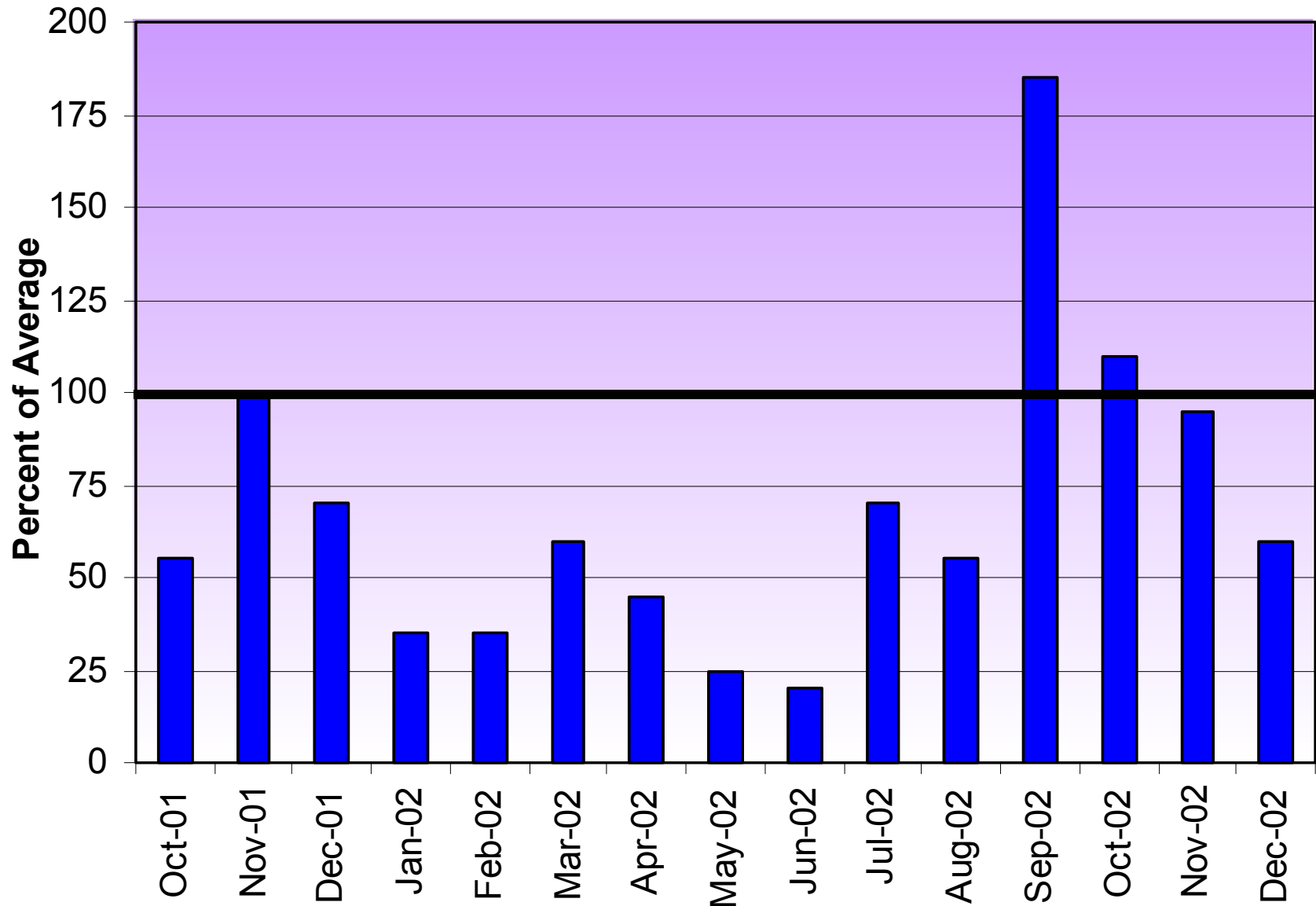




Basin Hydrology Colorado River Basin

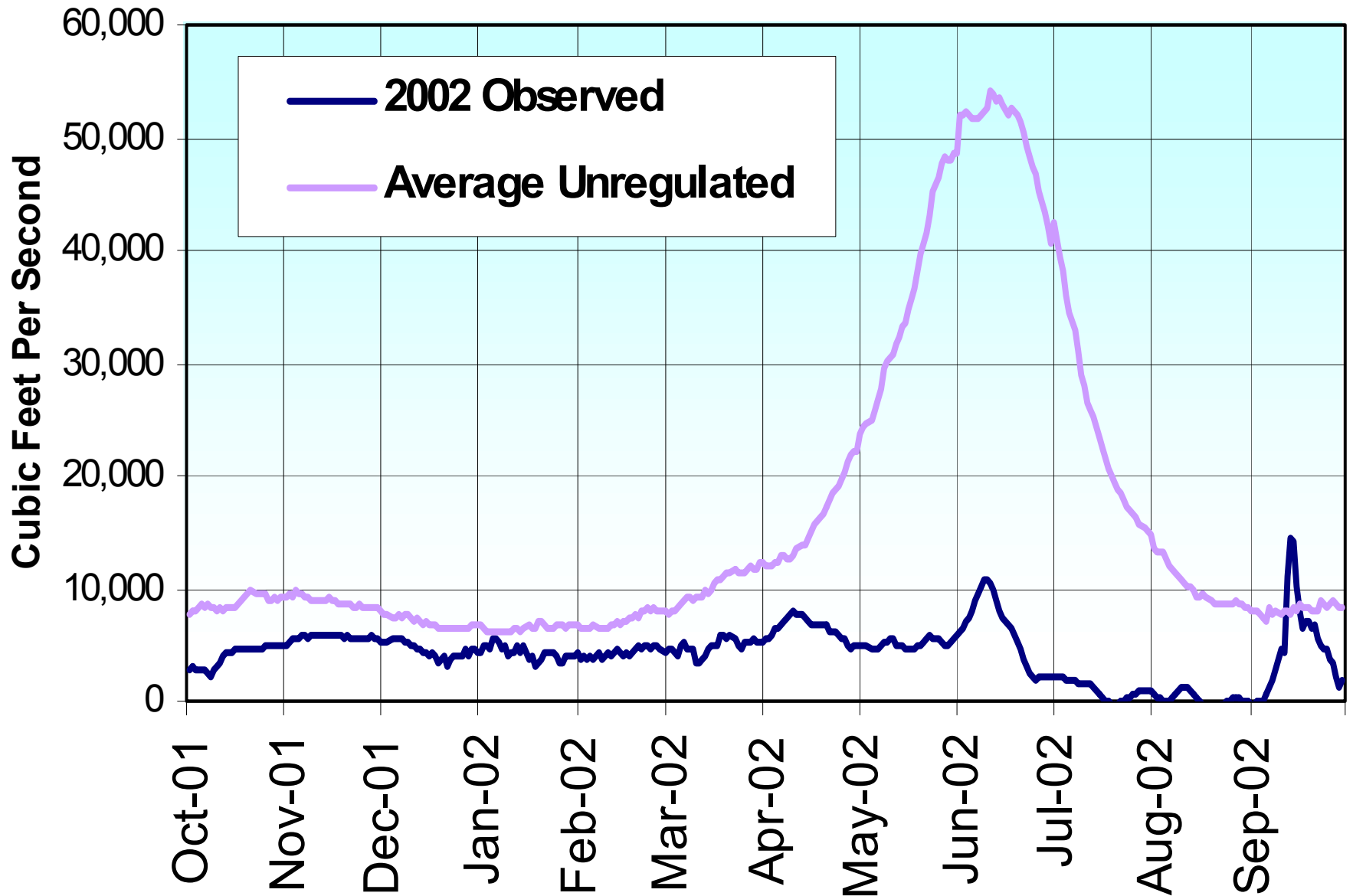
Adaptive Management Work Group
Phoenix, Arizona
January 29, 2003

Upper Colorado River Basin Precipitation October 2001 - December 2002



Lake Powell Unregulated Inflow

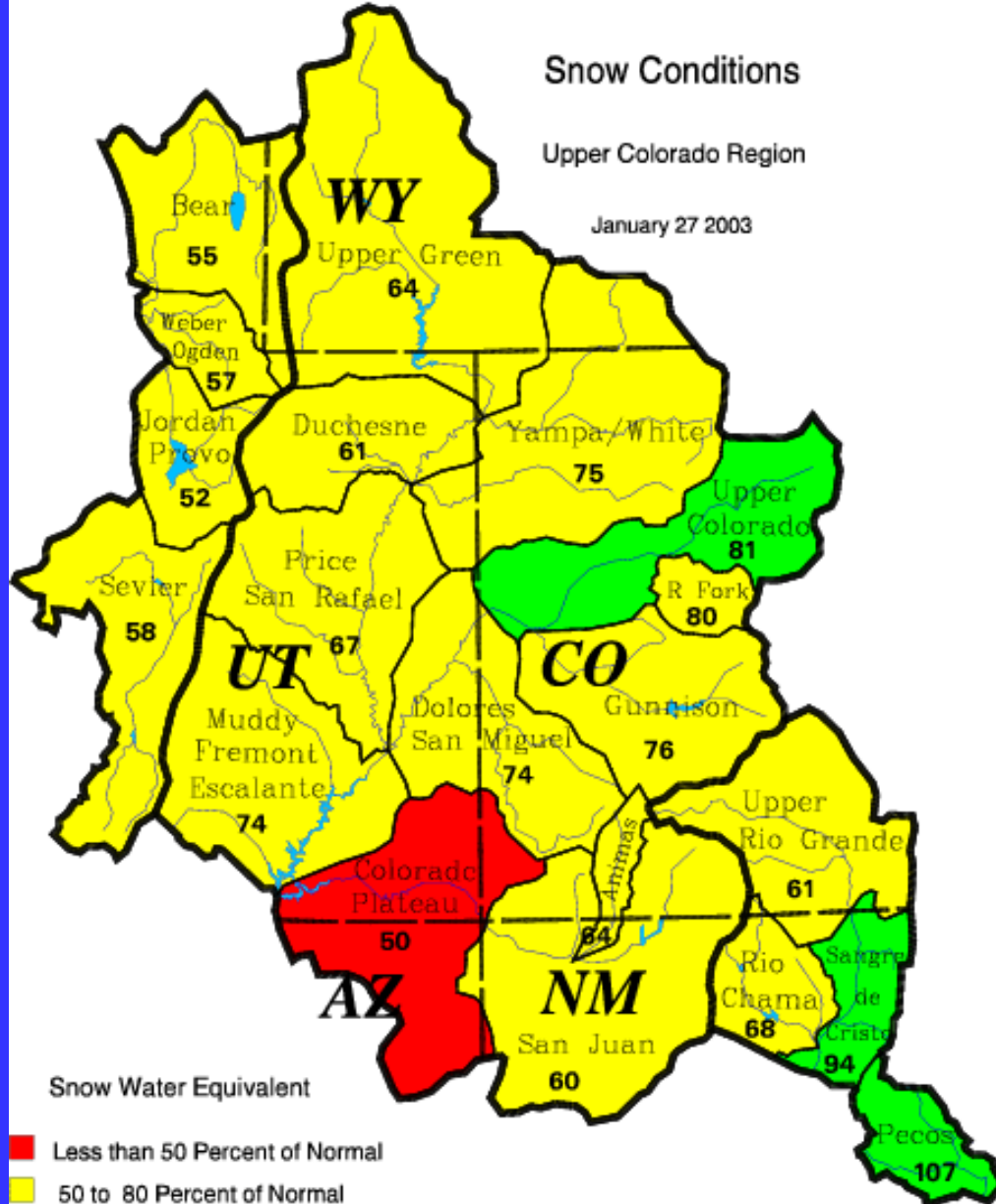
Water year 2002



Snow Conditions

Upper Colorado Region

January 27 2003



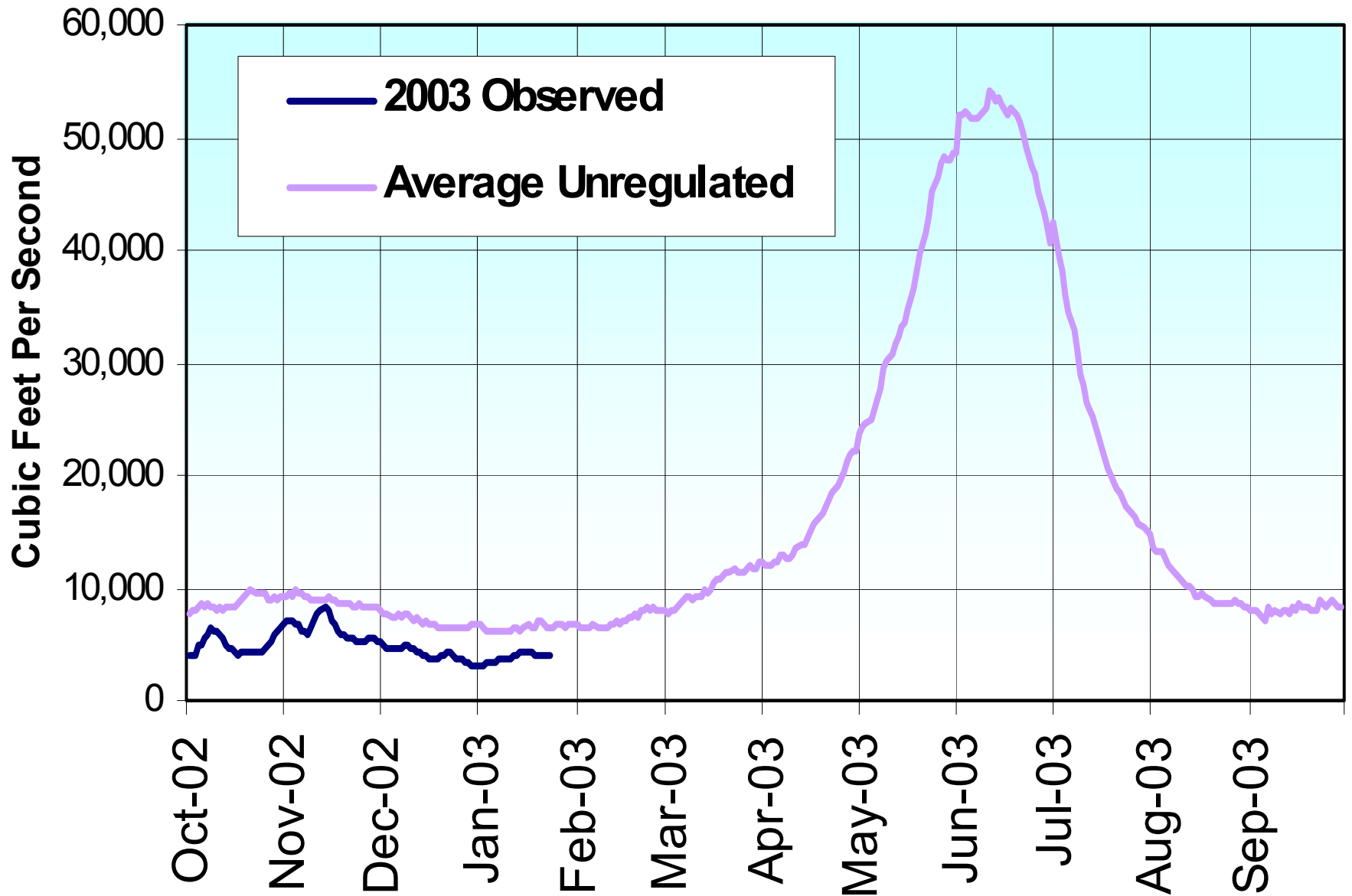
Snow Water Equivalent

- Less than 50 Percent of Normal
- 50 to 80 Percent of Normal
- 80 to 120 Percent of Normal
- 120 to 150 Percent of Normal
- Greater than 150 Percent of Normal

Upper Colorado
GIS
Region

Lake Powell Unregulated Inflow

Water year 2003



2003 Upper Colorado Apr–Jul Inflow

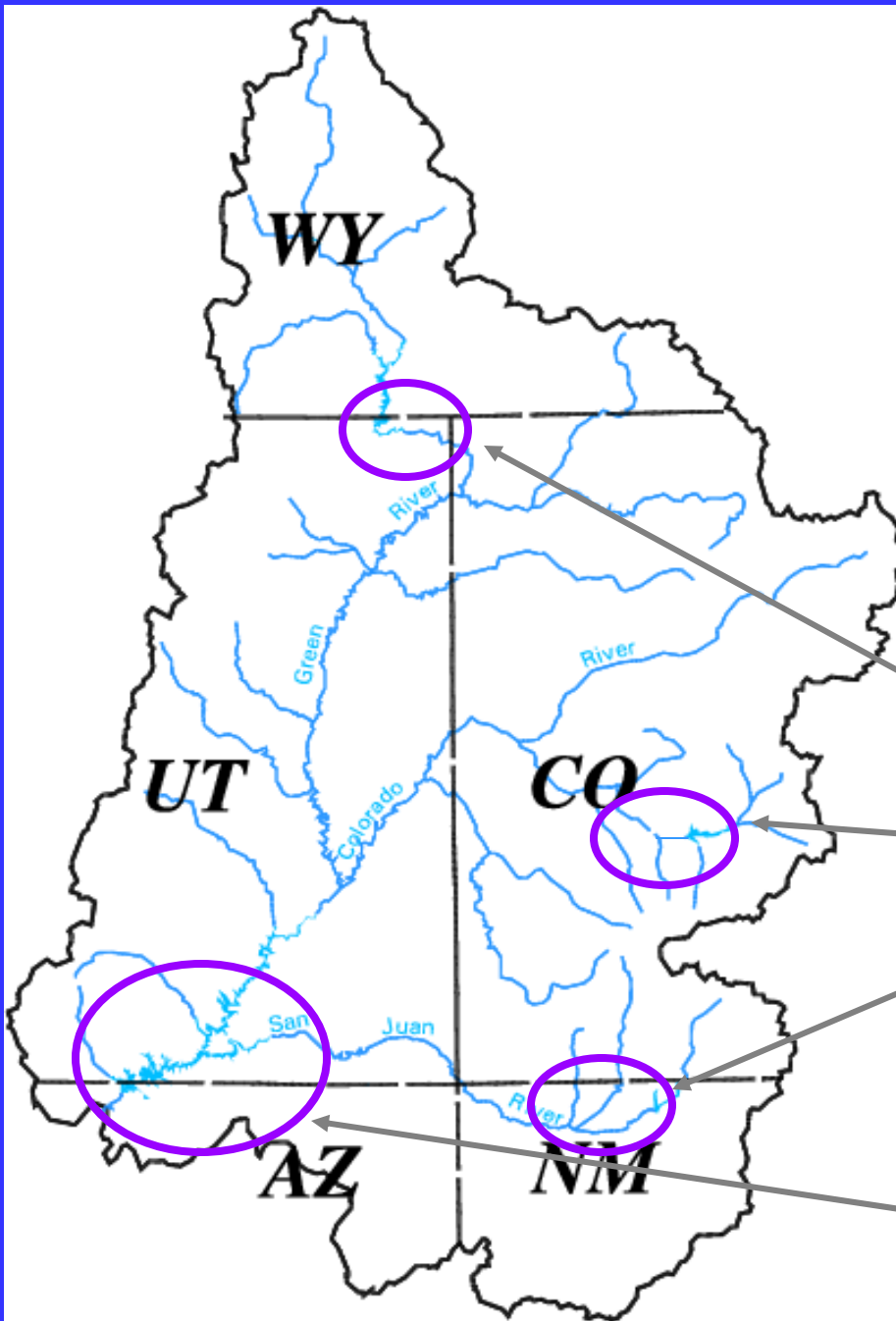
January Mid-Month
Forecasts

Flaming Gorge – 57 %

Blue Mesa – 77 %

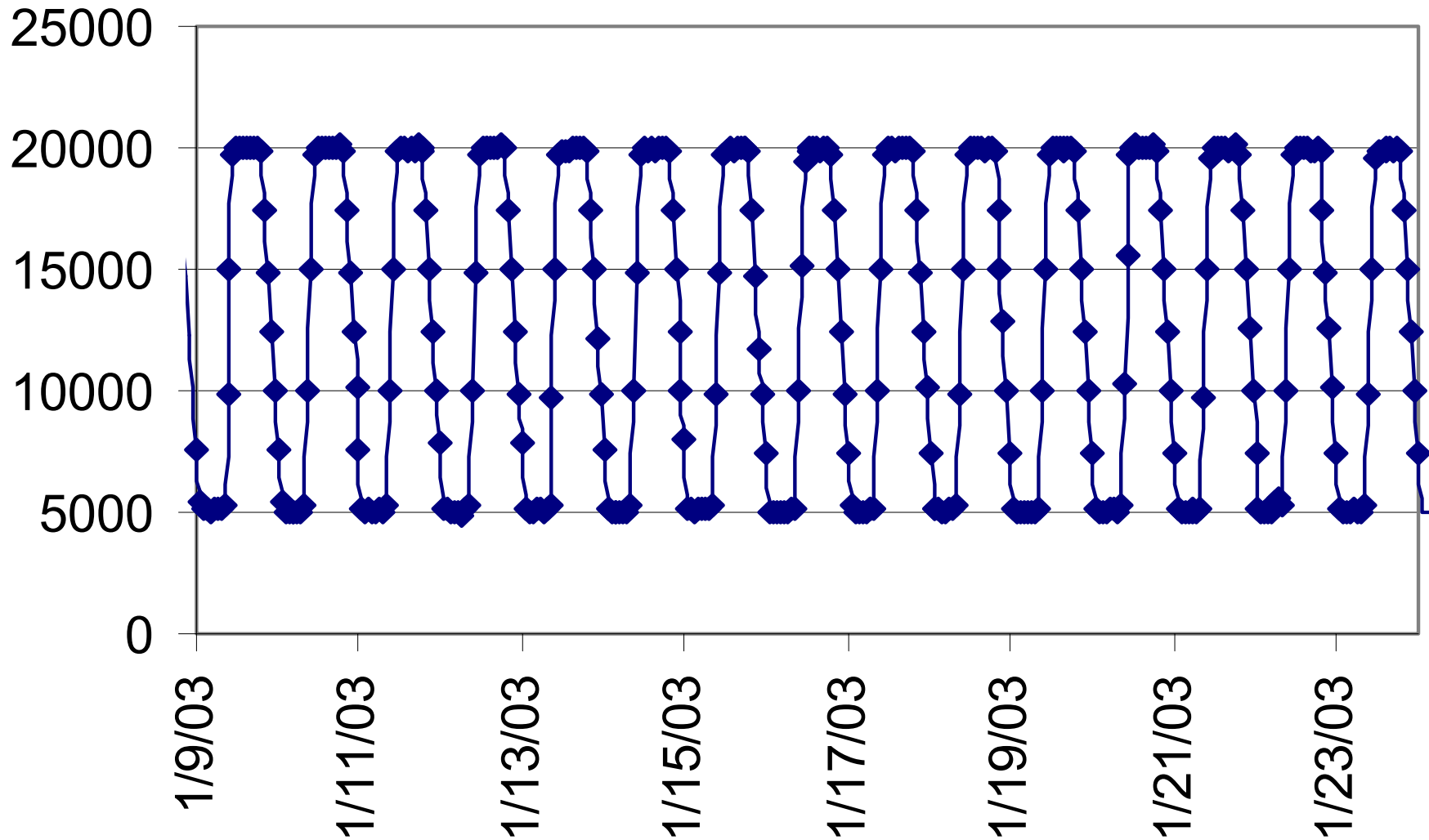
Navajo – 64 %

Lake Powell – 69 %



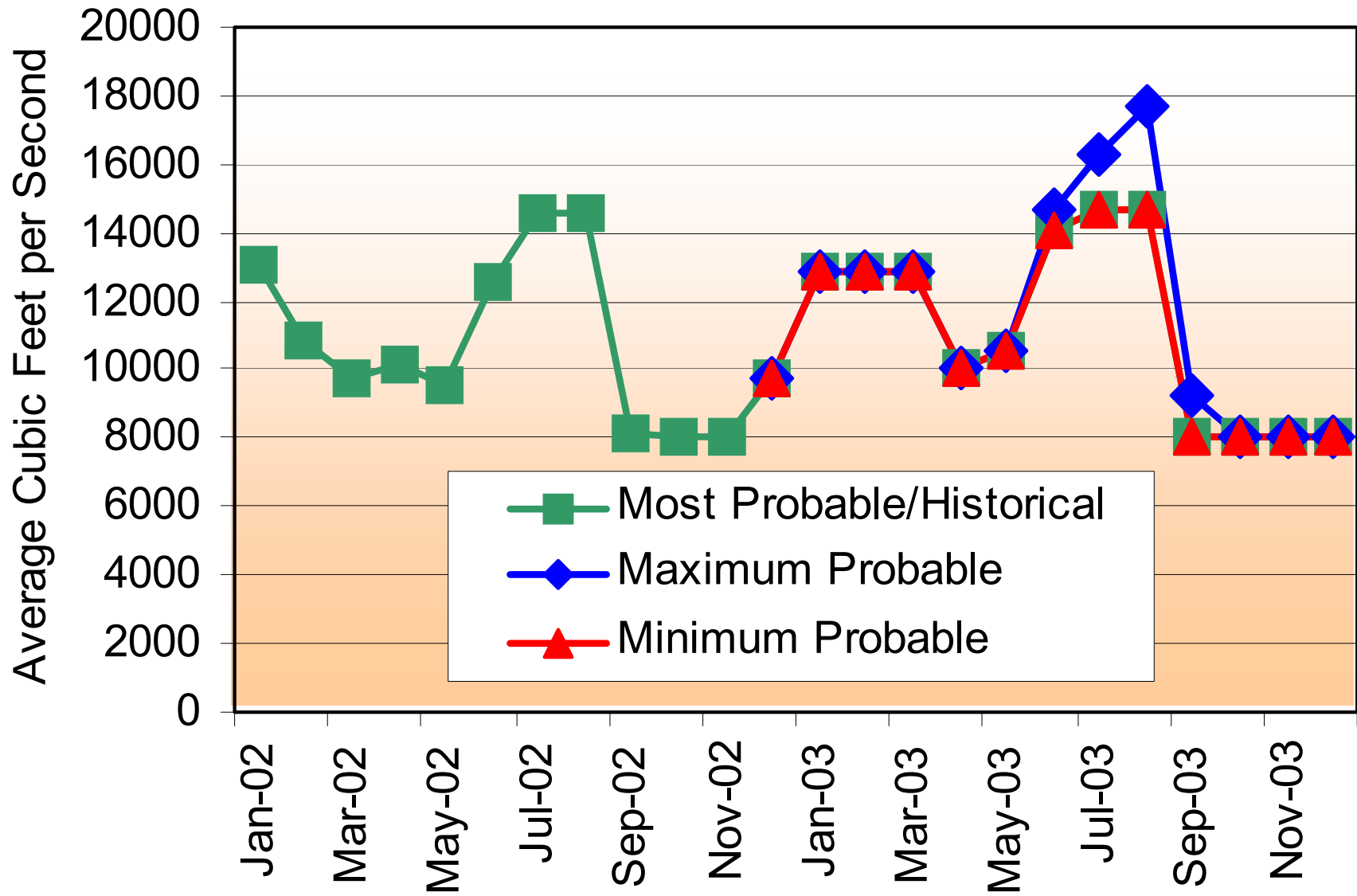
Glen Canyon Hourly Releases

Data Source SCADA



Glen Canyon Dam Releases

Based on January, 2003 Inflow Projections



Lake Powell Water Surface Elevations

Based on January, 2003 Inflow Projections

