

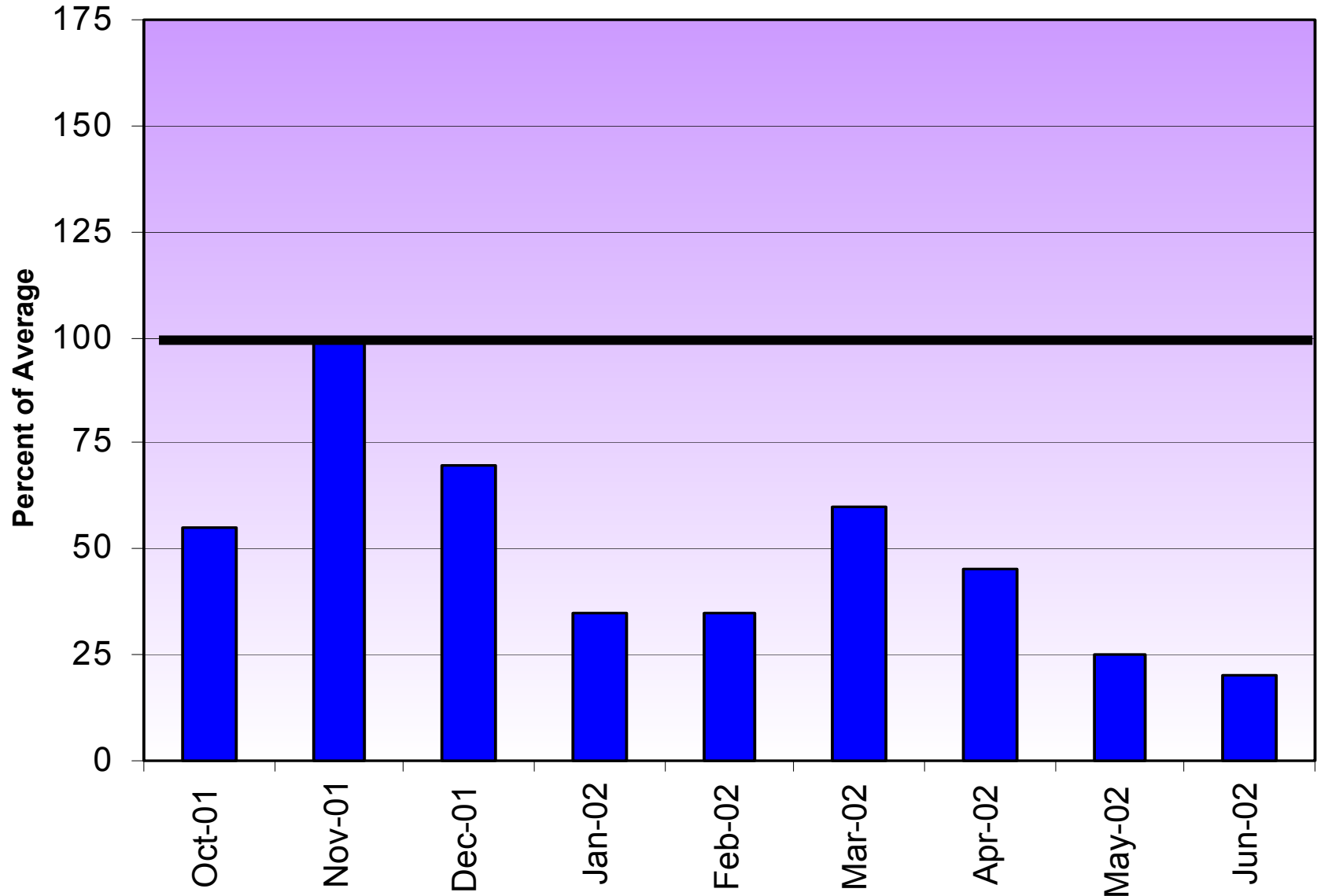


# **Basin Hydrology Upper Colorado River Basin**

Glen Canyon Dam  
Adaptive Management Work Group  
Meeting

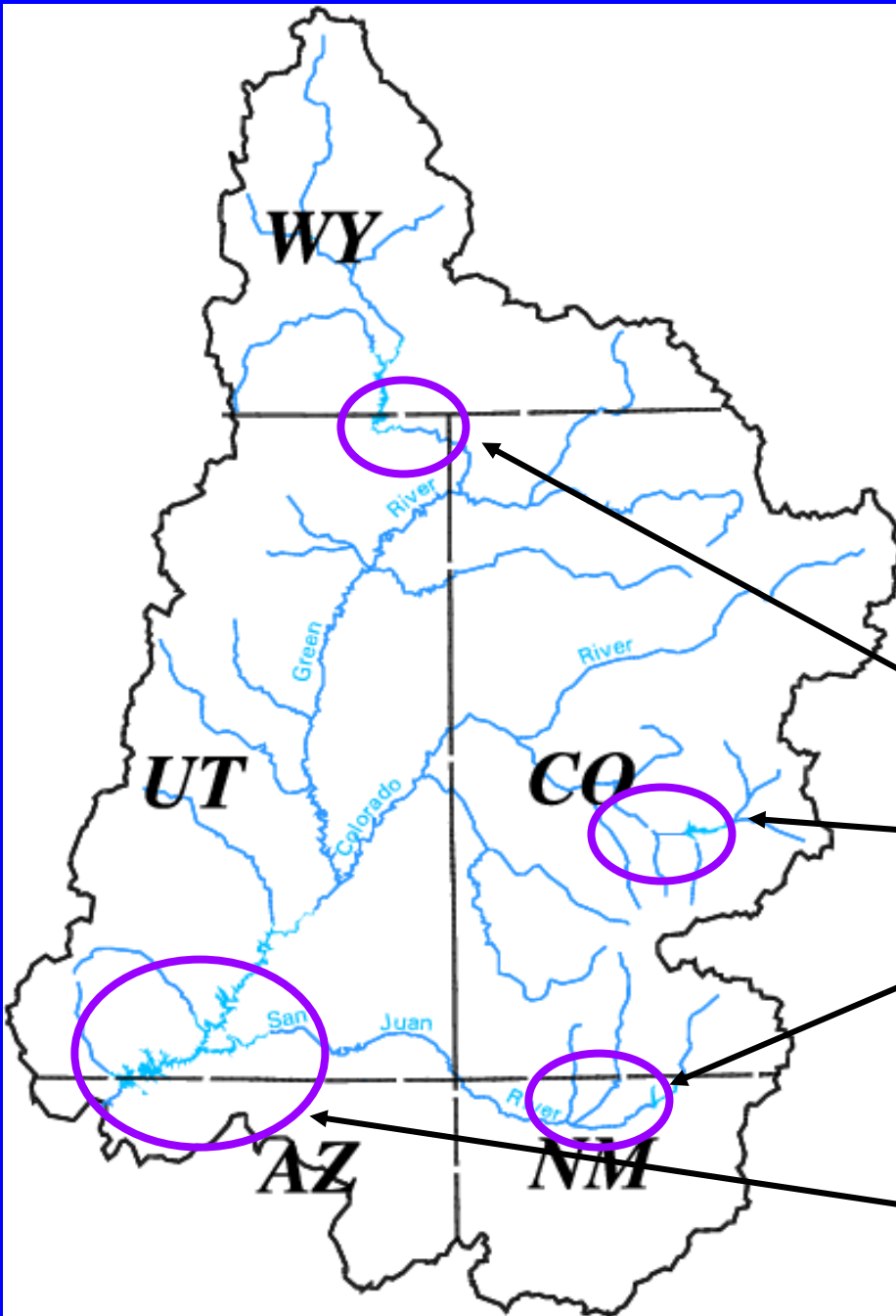
Phoenix, Arizona  
July 18, 2002

# Aggregate Upper Colorado River Basin Precipitation - WY 2002

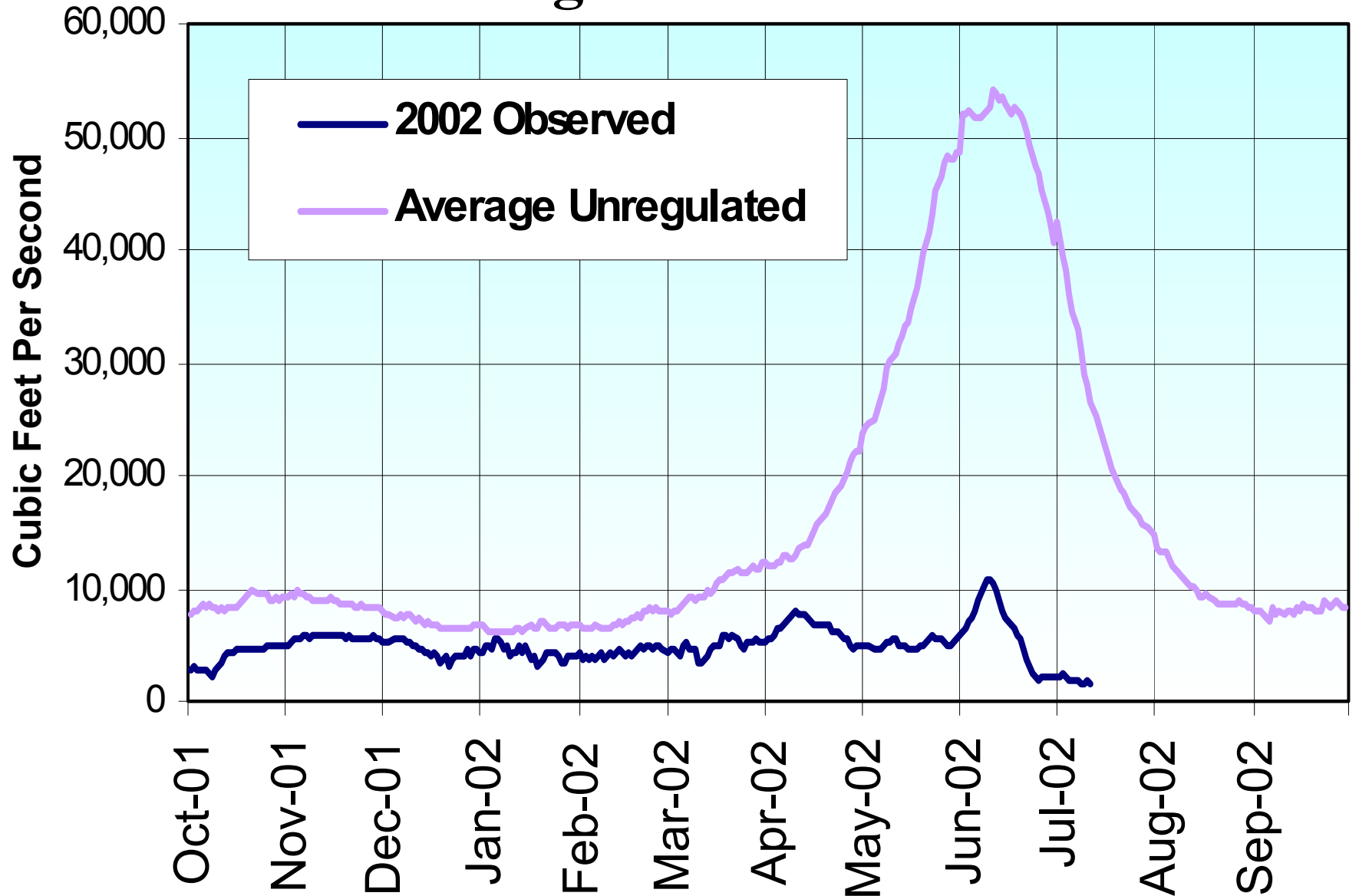


# 2002 Upper Colorado Apr–Jul Inflow

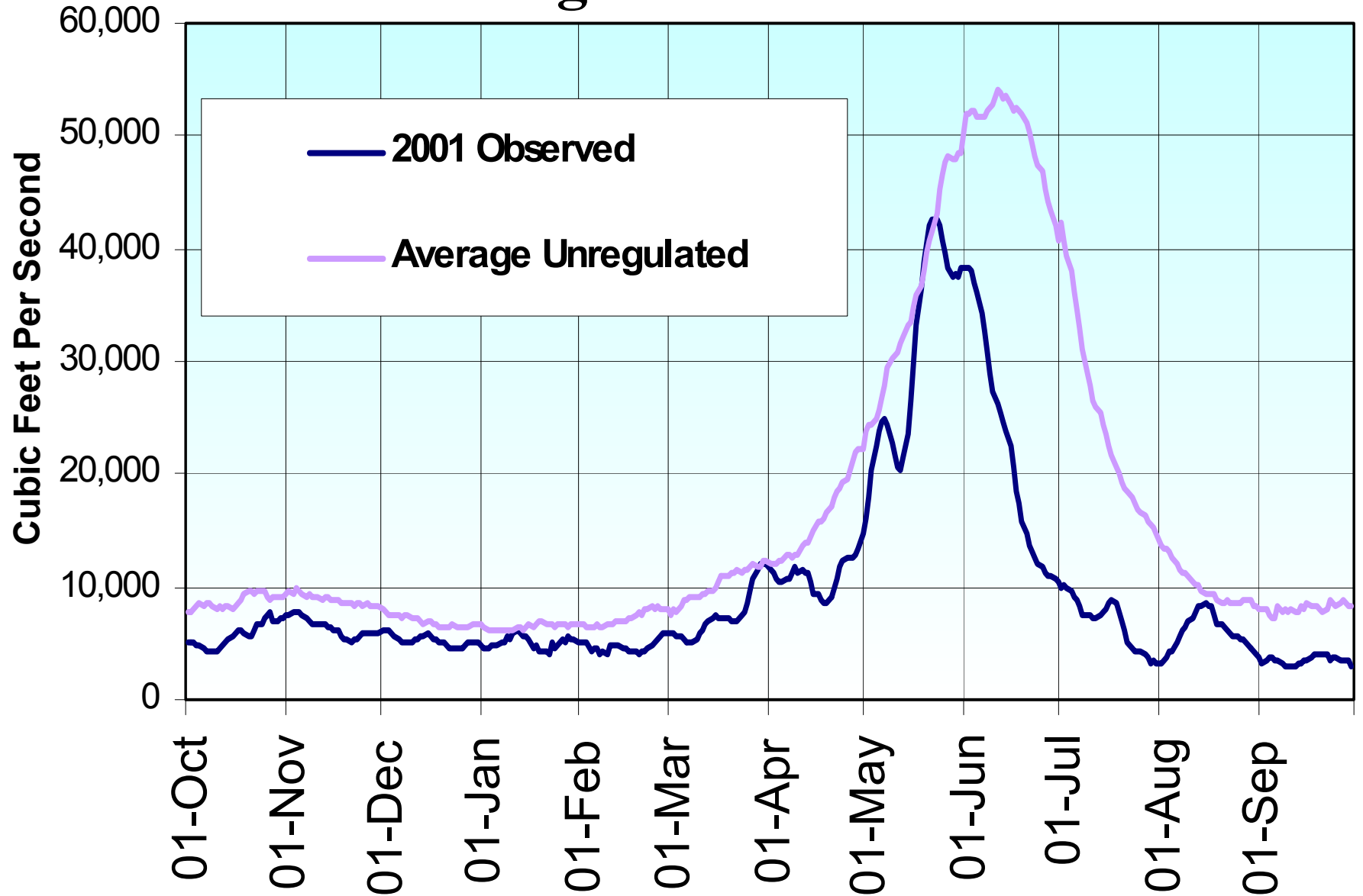
- July 2002  
Mid-Month Forecasts
- Flaming Gorge – 28 %
  - Blue Mesa – 22 %
  - Navajo – 6 %
  - Lake Powell – 15%



# Water Year 2002 Lake Powell Unregulated Inflow

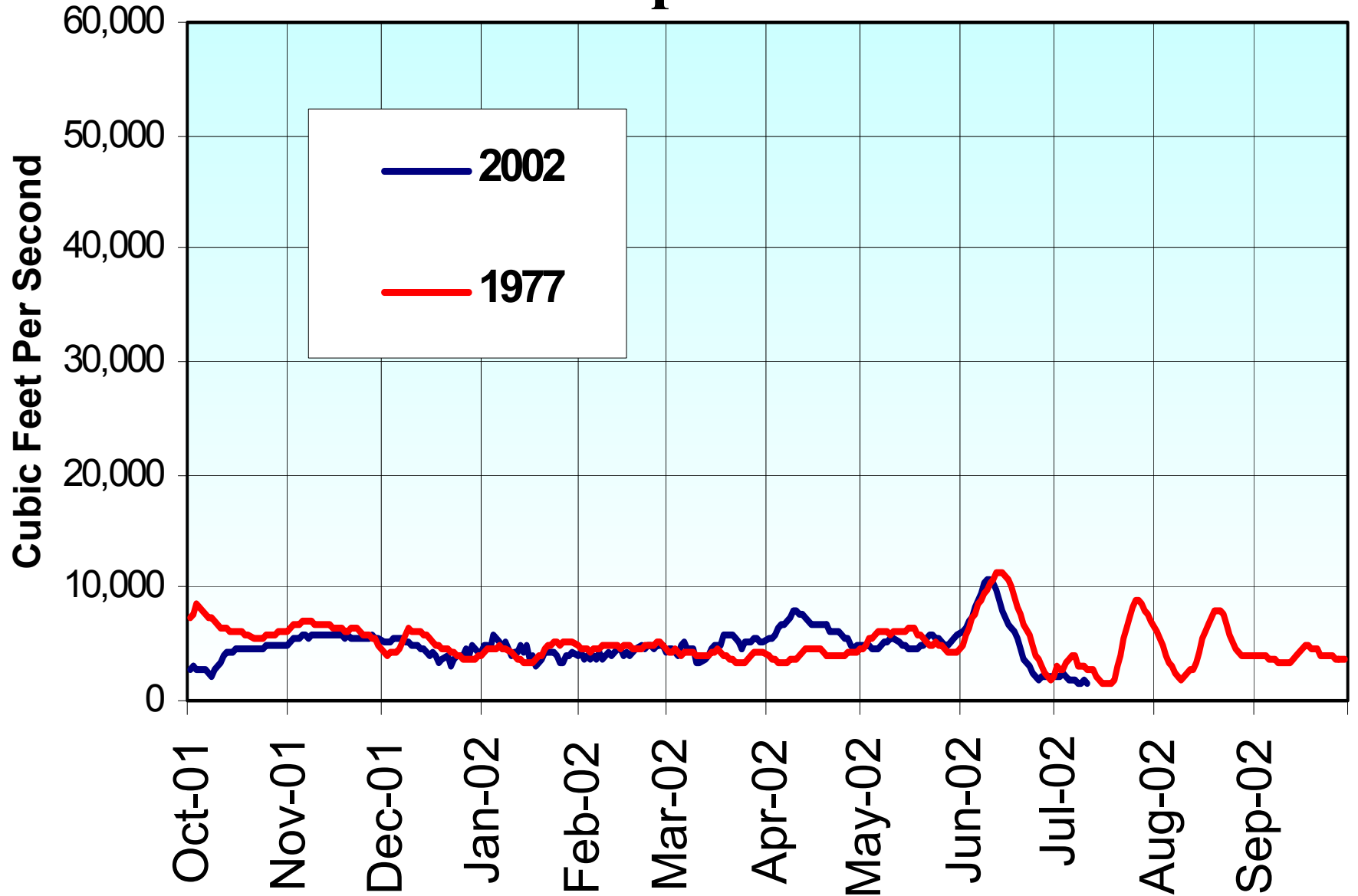


# Water Year 2001 Lake Powell Unregulated Inflow





# Water Year 2002 Lake Powell Inflow Compared to 1977



# Colorado River at Lees Ferry

## Synthesized Natural Flows - WY 1934



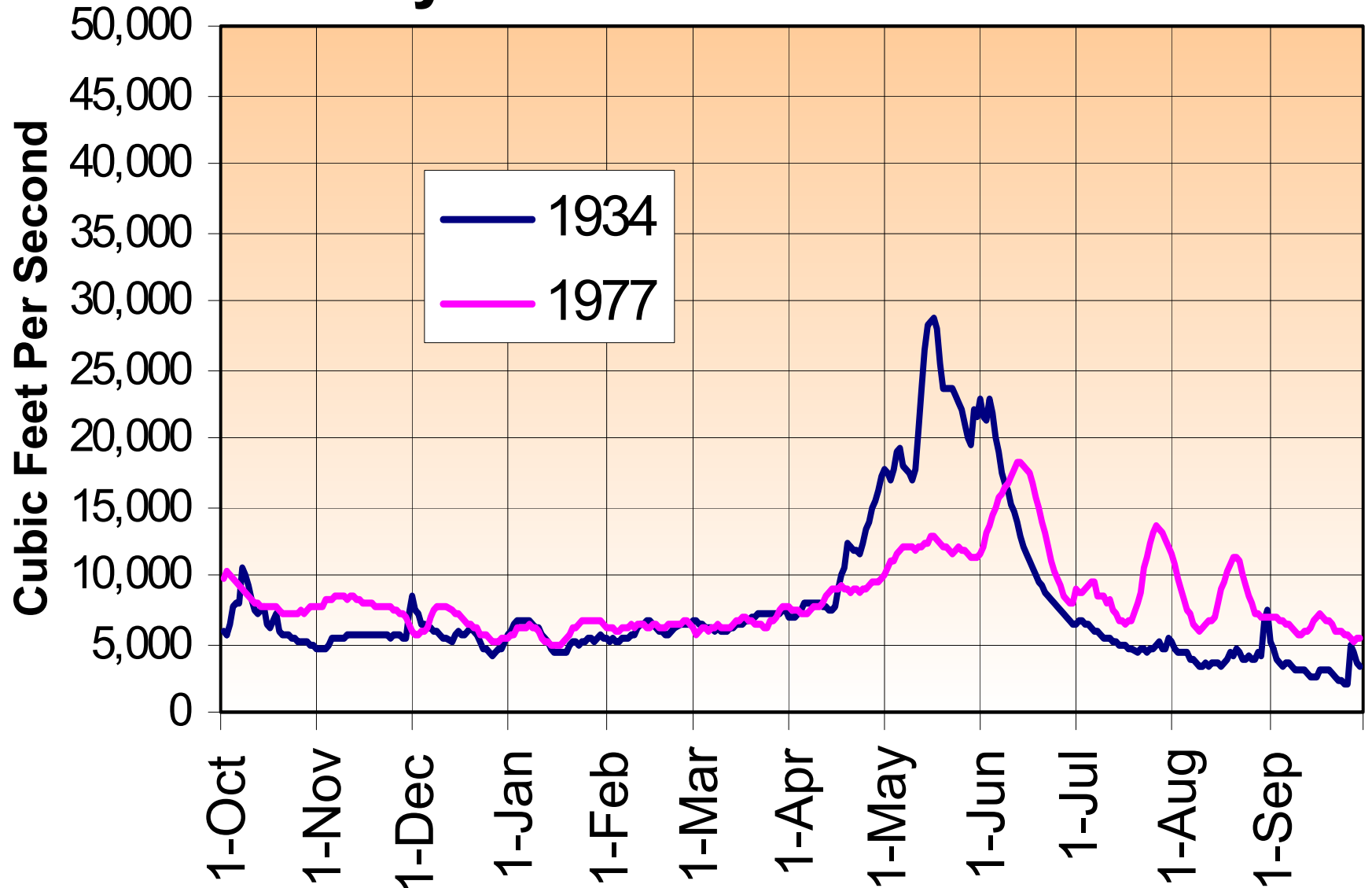
# Colorado River at Lees Ferry

## Synthesized Natural Flows - WY 1977



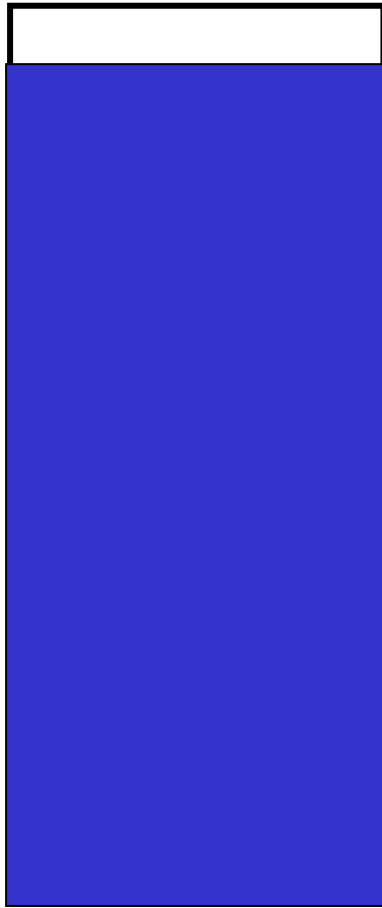


# Colorado River at Lees Ferry Synthesized Natural Flows



# Lake Powell – Lake Mead Storage

## September 30, 1999



**Powell – 95 %**

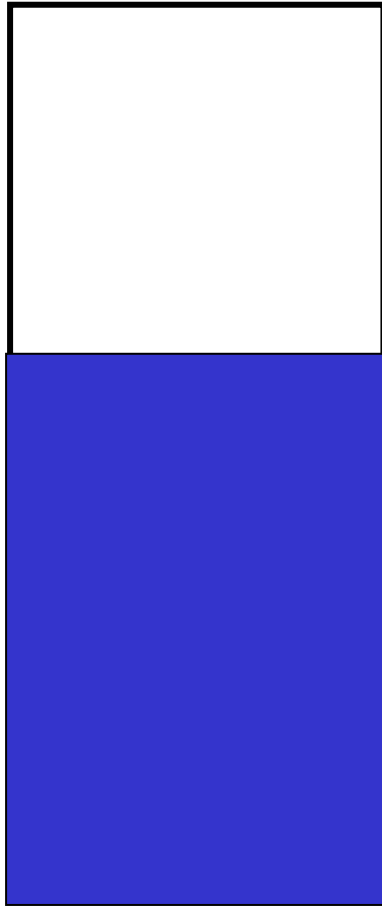


**Mead – 95 %**

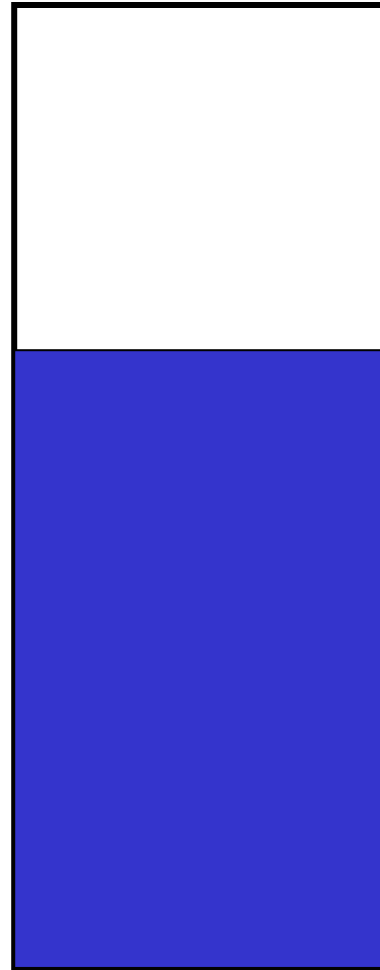
**Combined  
9/30/1999  
Storage  
95 %  
Of  
Capacity**

# Lake Powell – Lake Mead Storage

## September 30, 2002 (Projected)



**Powell – 60 %**

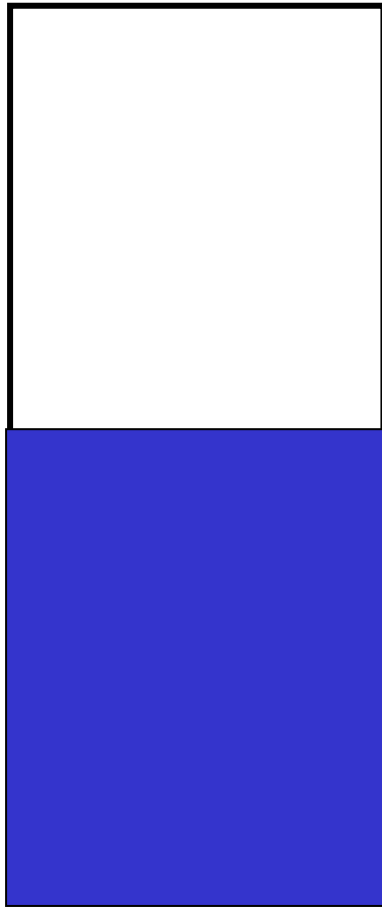


**Mead – 67 %**

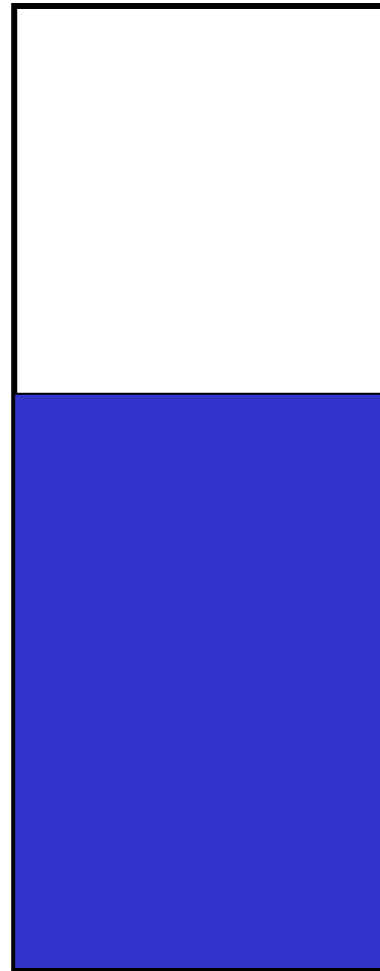
**Combined  
9/30/2002  
Projected  
Storage  
64 %  
Of  
Capacity**

# Lake Powell – Lake Mead Storage

## April 1, 2003 (Projected)



**Powell – 52 %**

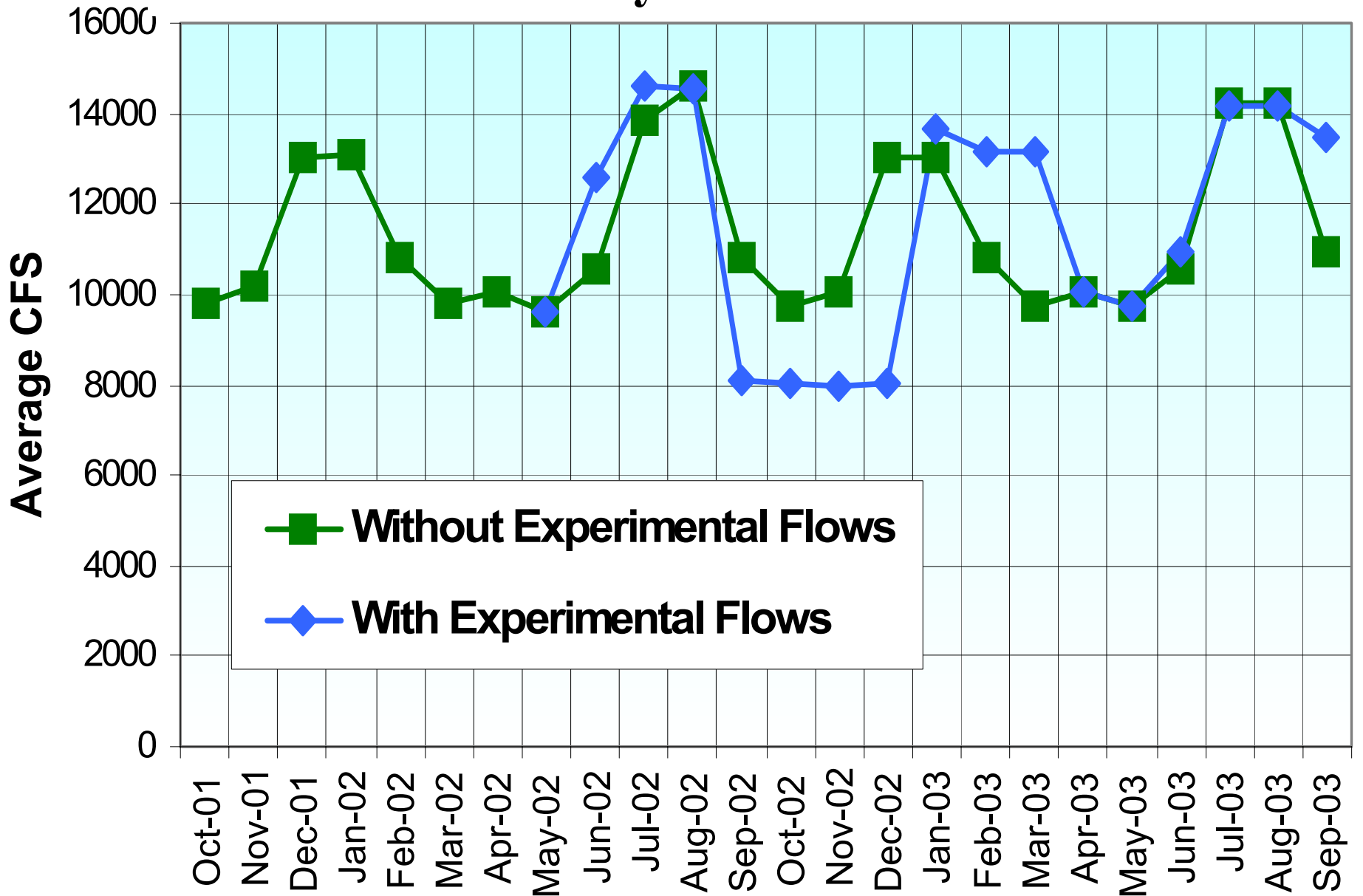


**Mead – 64 %**

**Combined  
4/1/2003  
Projected  
Storage  
58 %  
Of  
Capacity**

# Glen Canyon Dam Average Releases

## Based on July 2002 Final Forecast



# Lake Powell Water Surface Elevations

## Based on July 2002 Final Forecast

