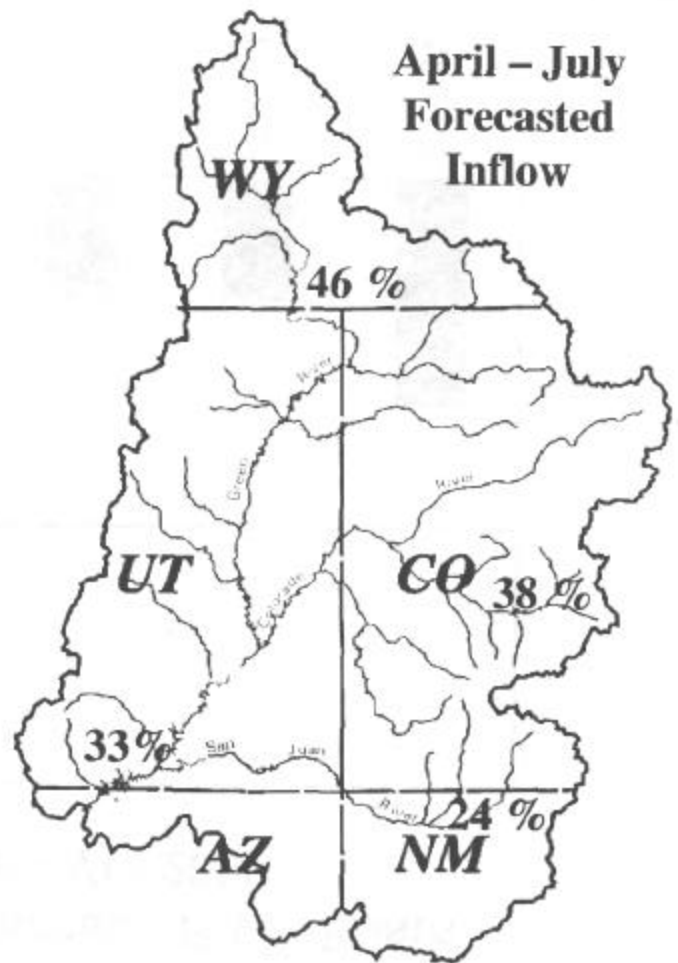


Basin Hydrology

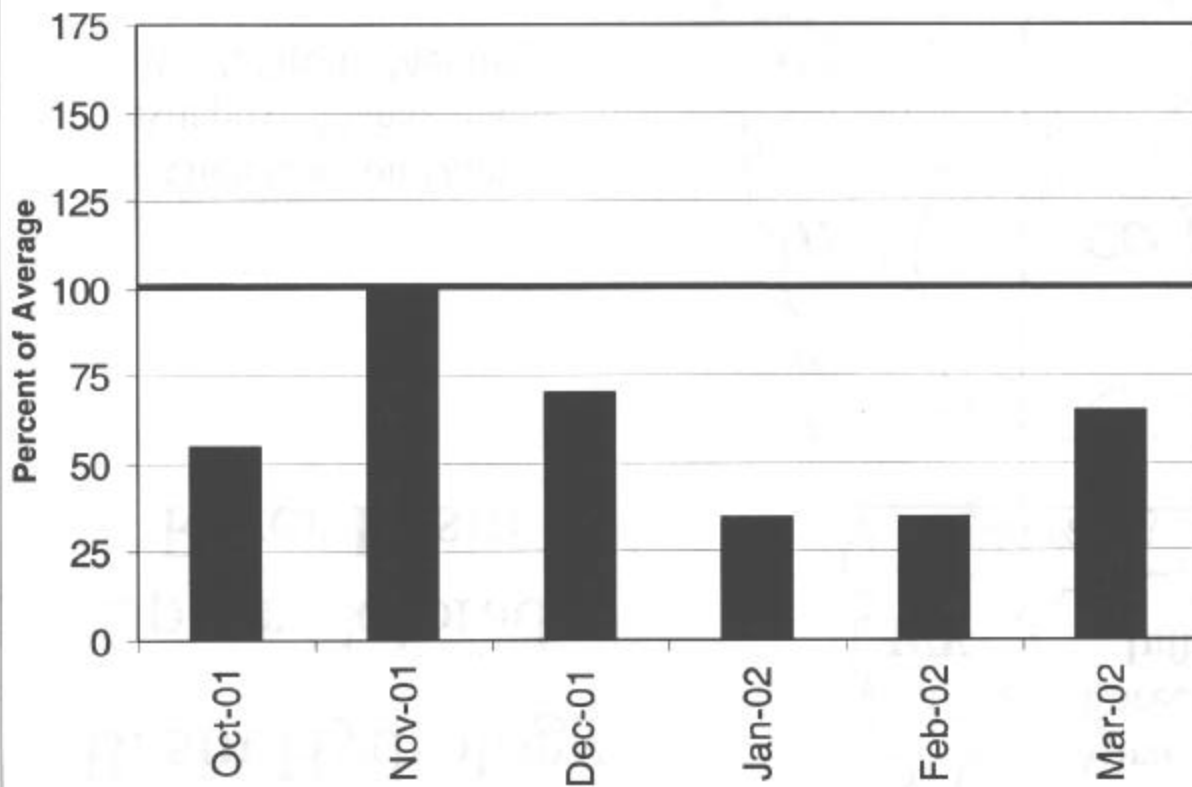
Upper Colorado River Basin

Glen Canyon Dam
Adaptive Management
Work Group Meeting

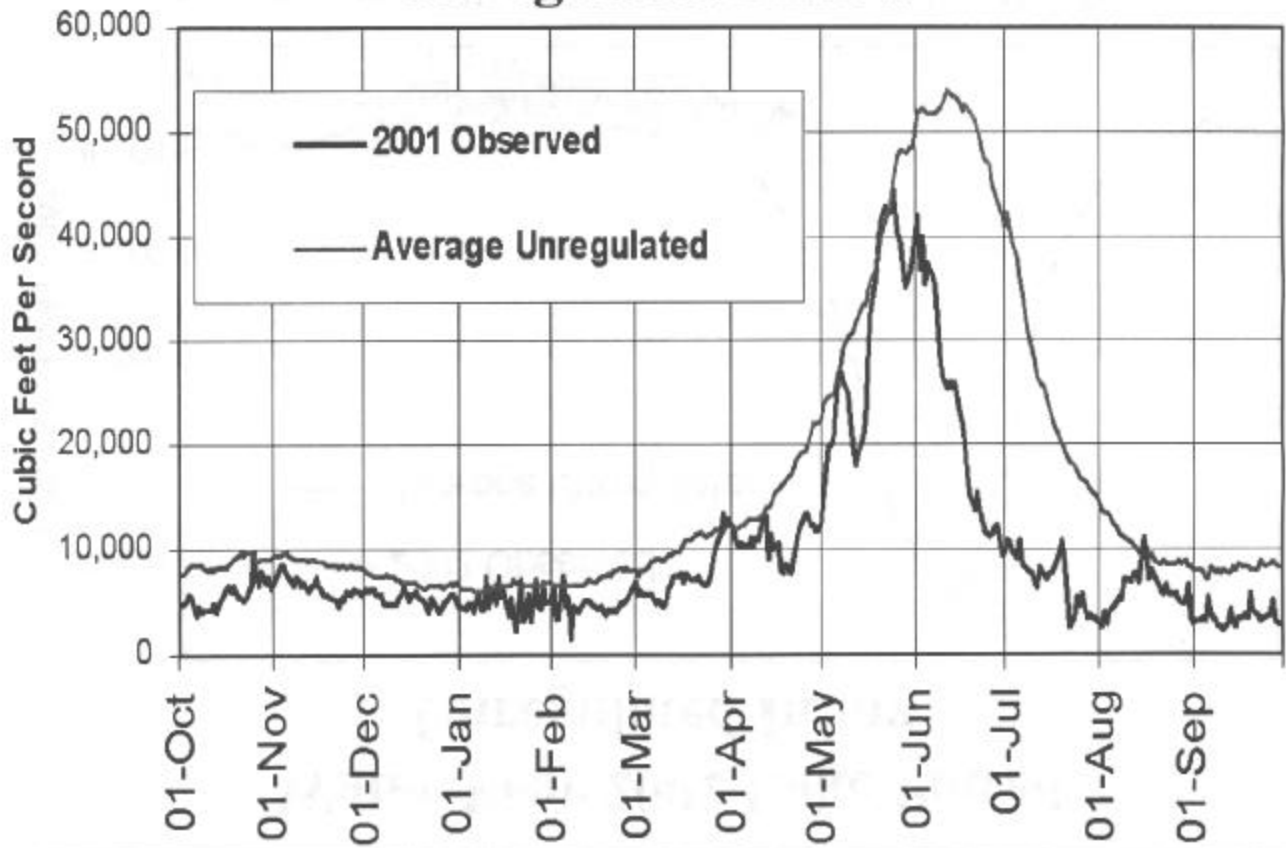
Phoenix, Arizona
April 24, 2002



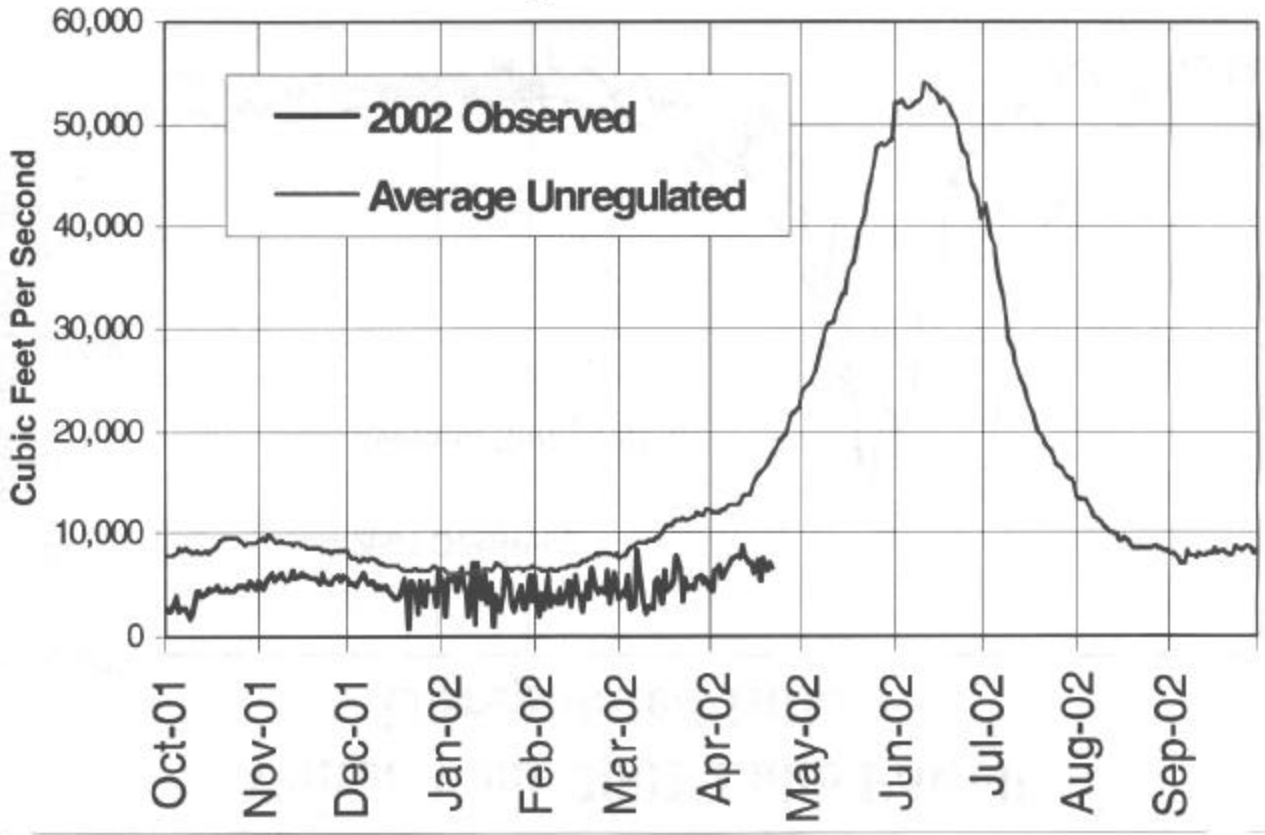
Aggregate Upper Colorado River Basin Precipitation - WY 2002



Water Year 2001 Lake Powell Unregulated Inflow

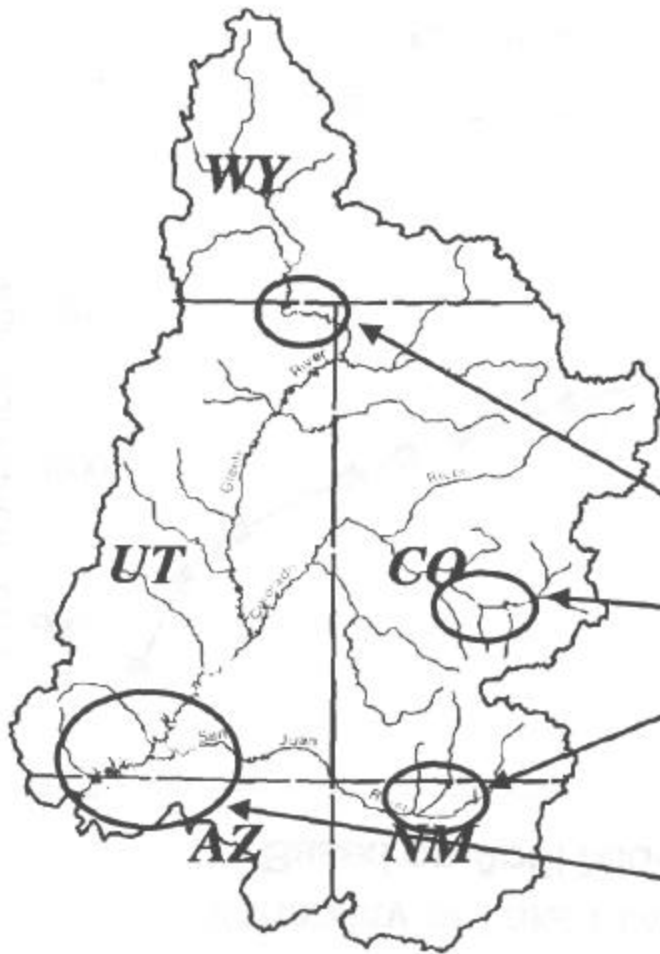


Water Year 2002 Lake Powell Unregulated Inflow



2002 Upper Colorado Apr-Jul Inflow

April 2002
Mid-Month Forecasts



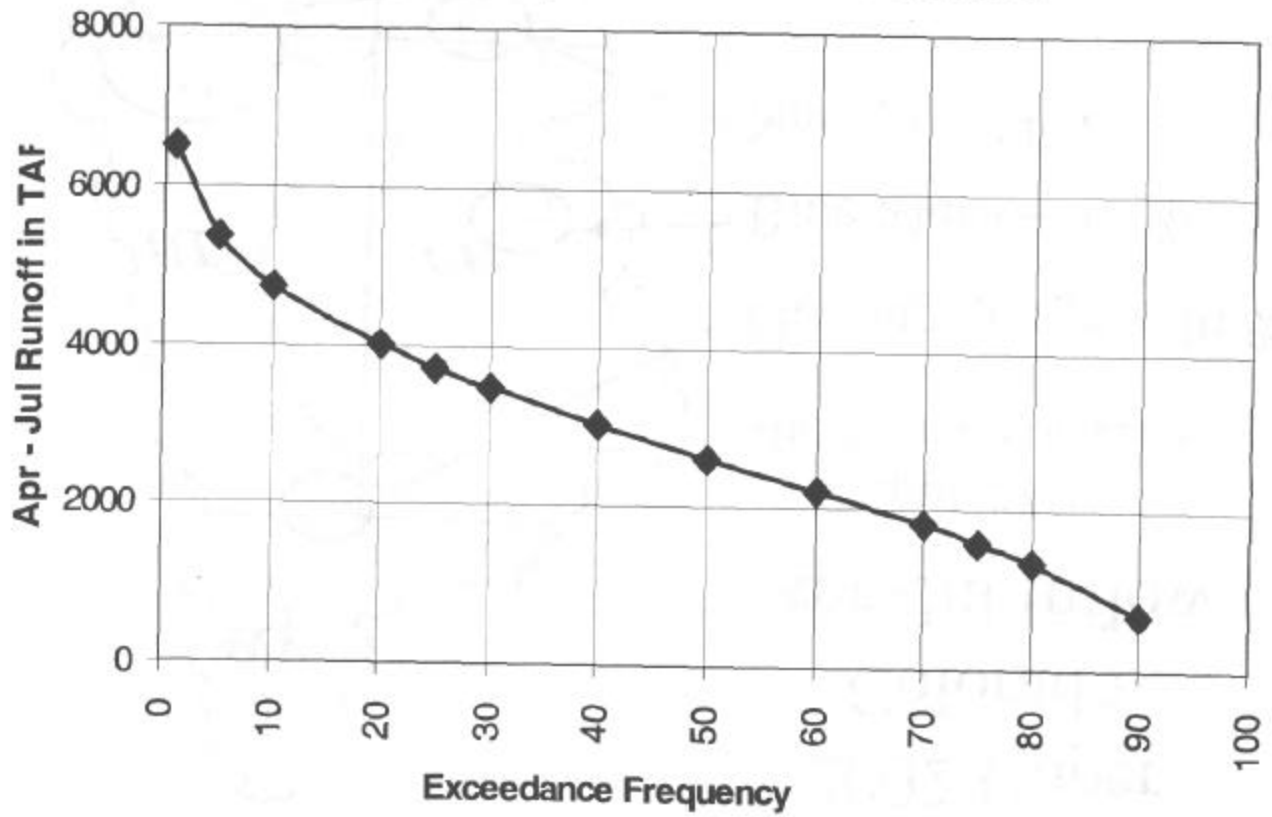
Flaming Gorge – 46 %

Blue Mesa – 38 %

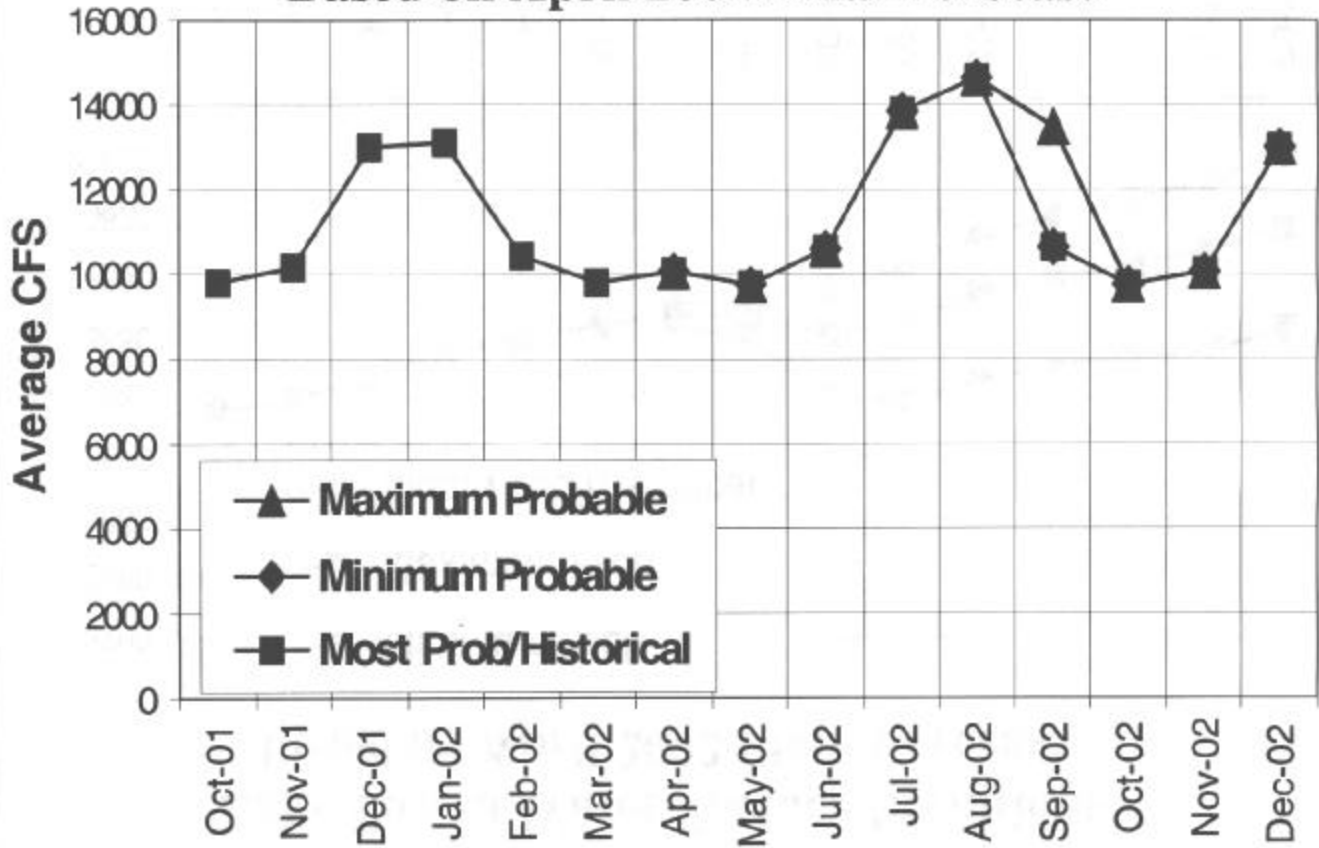
Navajo – 24 %

Lake Powell – 33 %

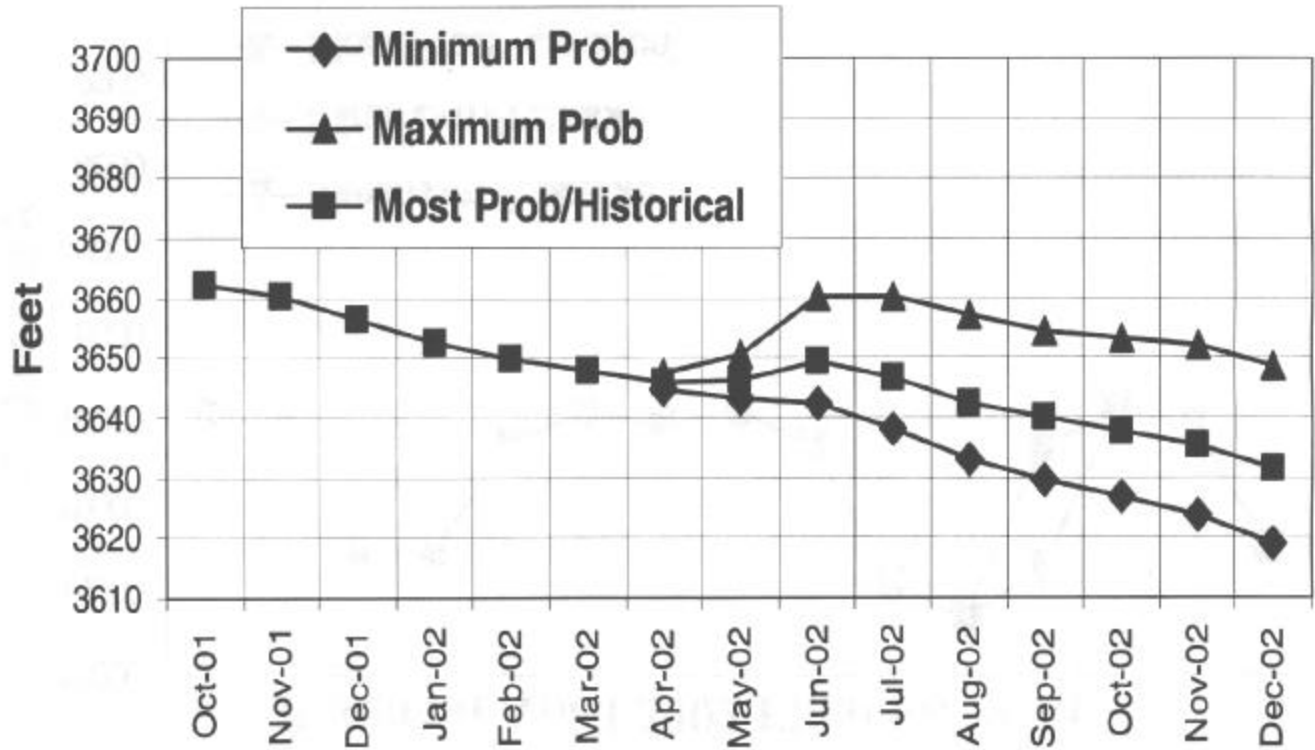
Variability of Lake Powell Apr - Jul Inflow Based on April Mid-Month Forecast



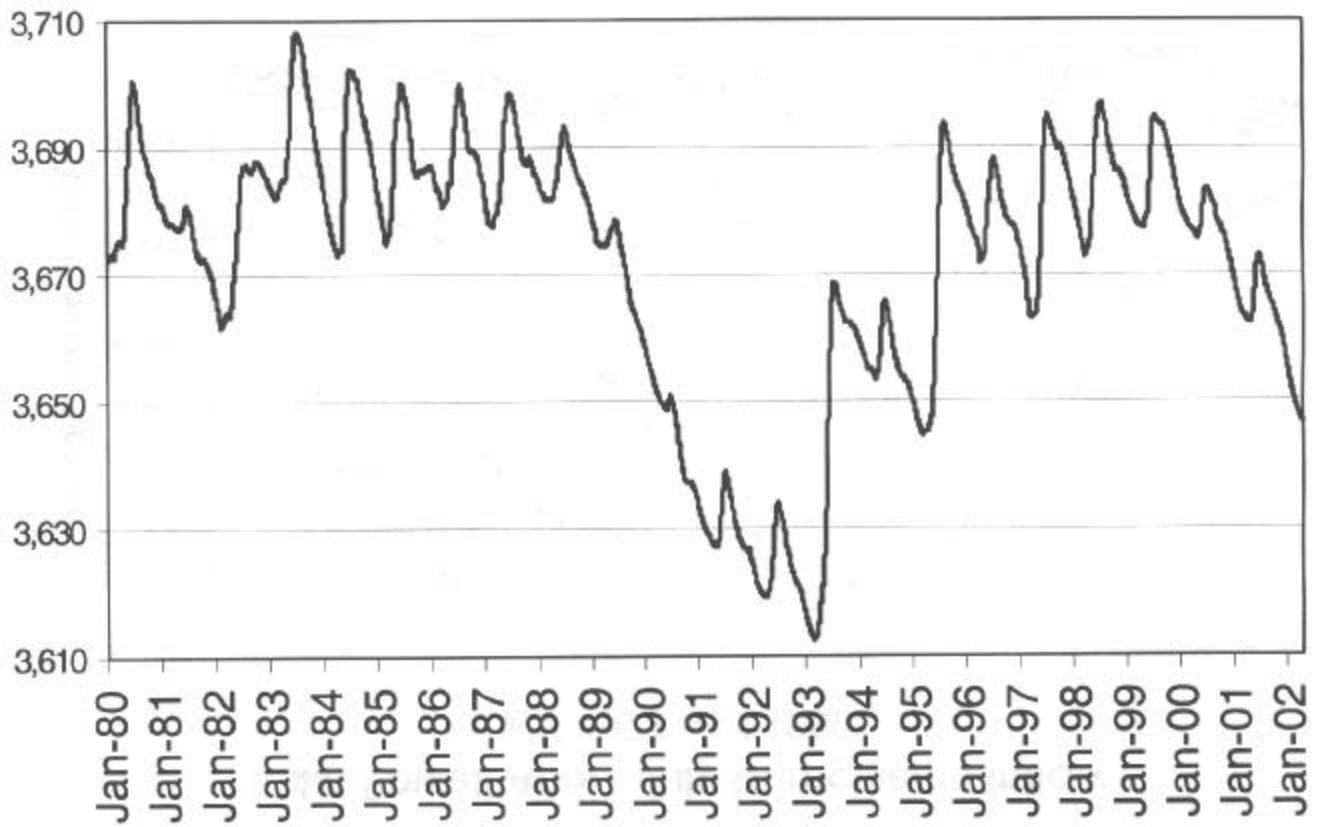
Glen Canyon Releases Based on April 2002 Final Forecast



Lake Powell Water Surface Elevations Based on April 2002 Final Forecast



Lake Powell Water Surface Elevations 1980 through Present



Lake Powell April - July Unregulated Inflow WY 1977 and 1990

