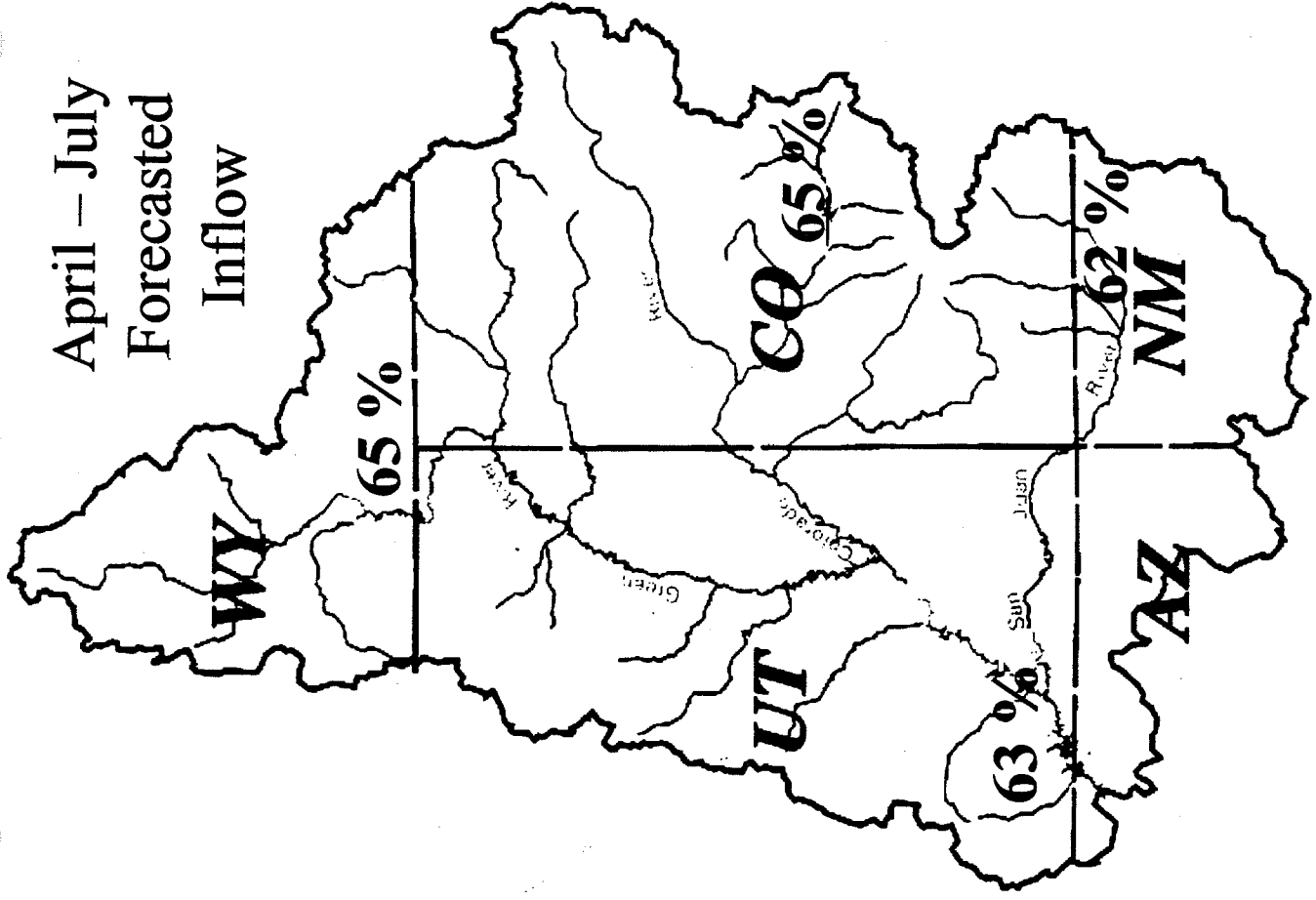


Basin Hydrology

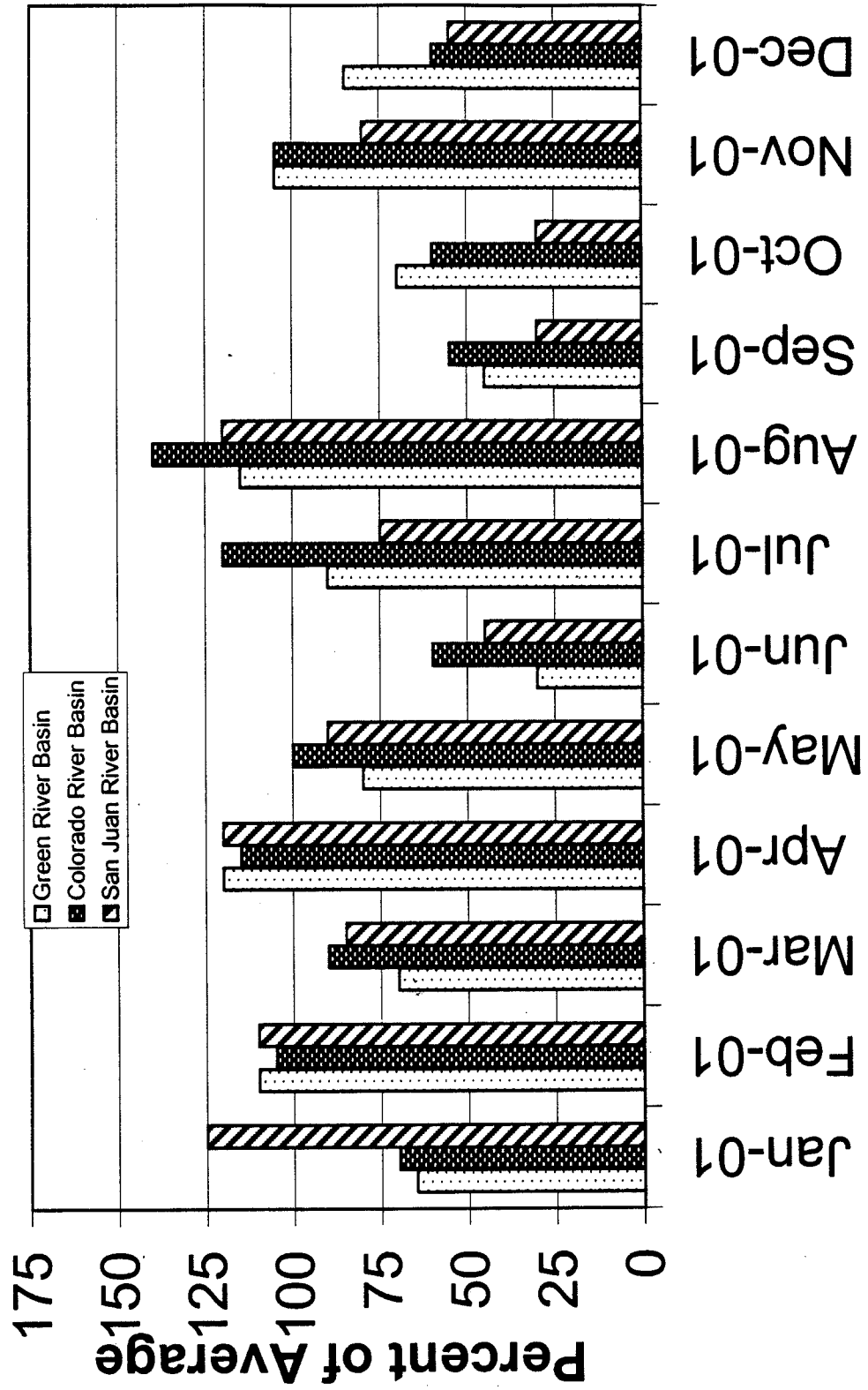
Upper Colorado River Basin

Adaptive Management
Work Group Meeting

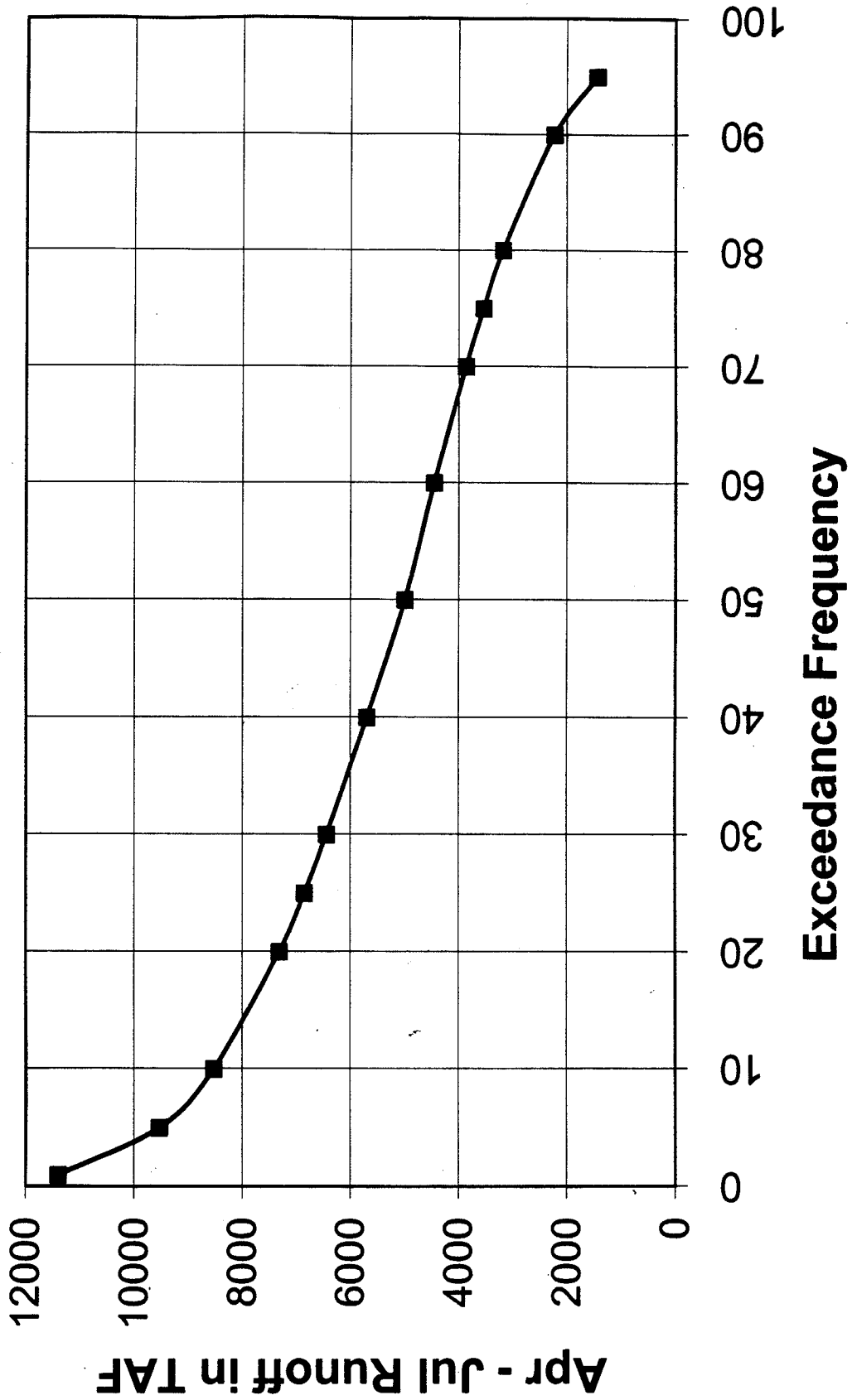
Phoenix, Arizona
January 18, 2002



Upper Colorado 2001 Precipitation

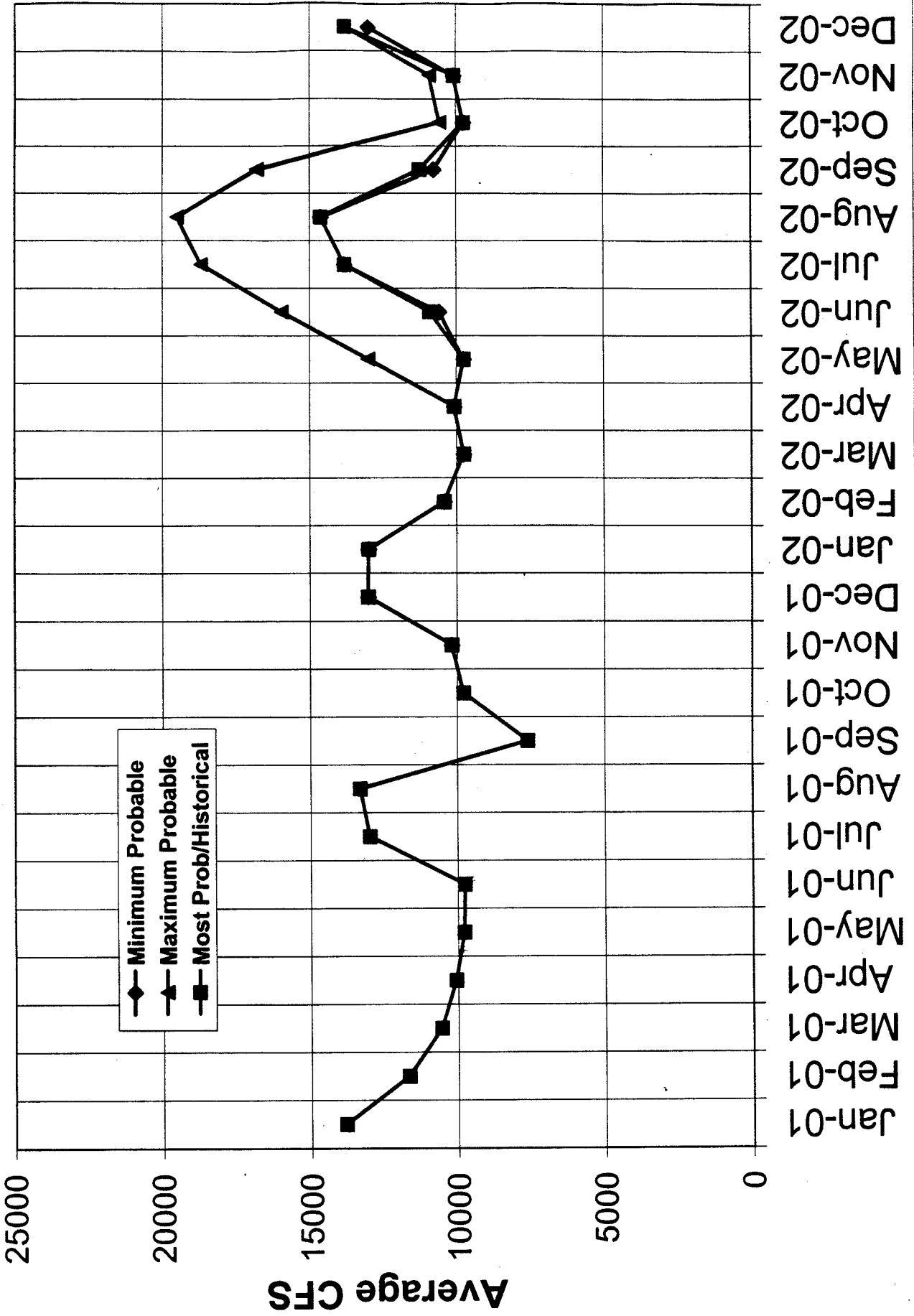


Variability of Lake Powell 2002 Apr - Jul Inflow Based on January Mid Month Forecast



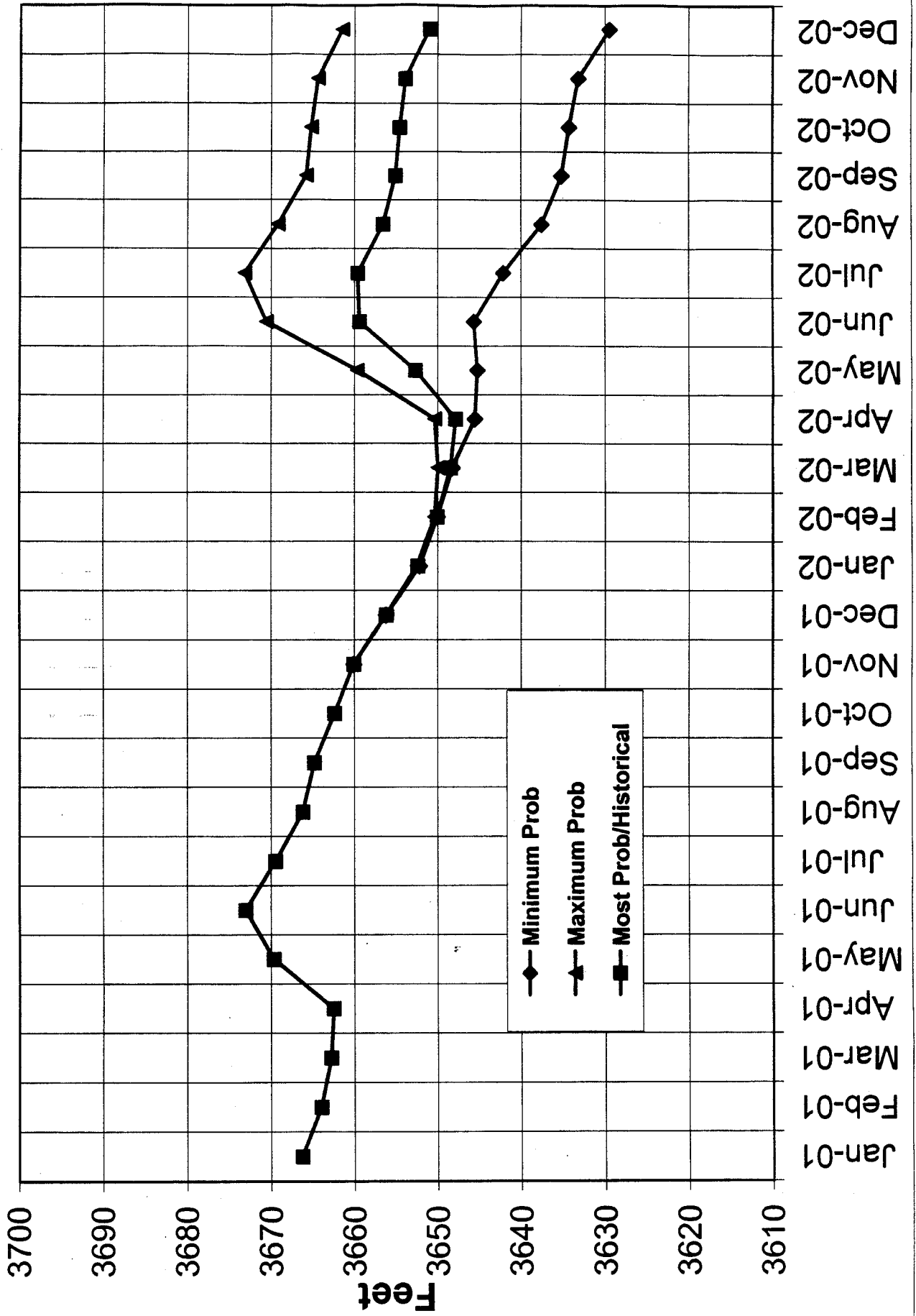
Glen Canyon Releases

Based on January 2002 Final Forecast

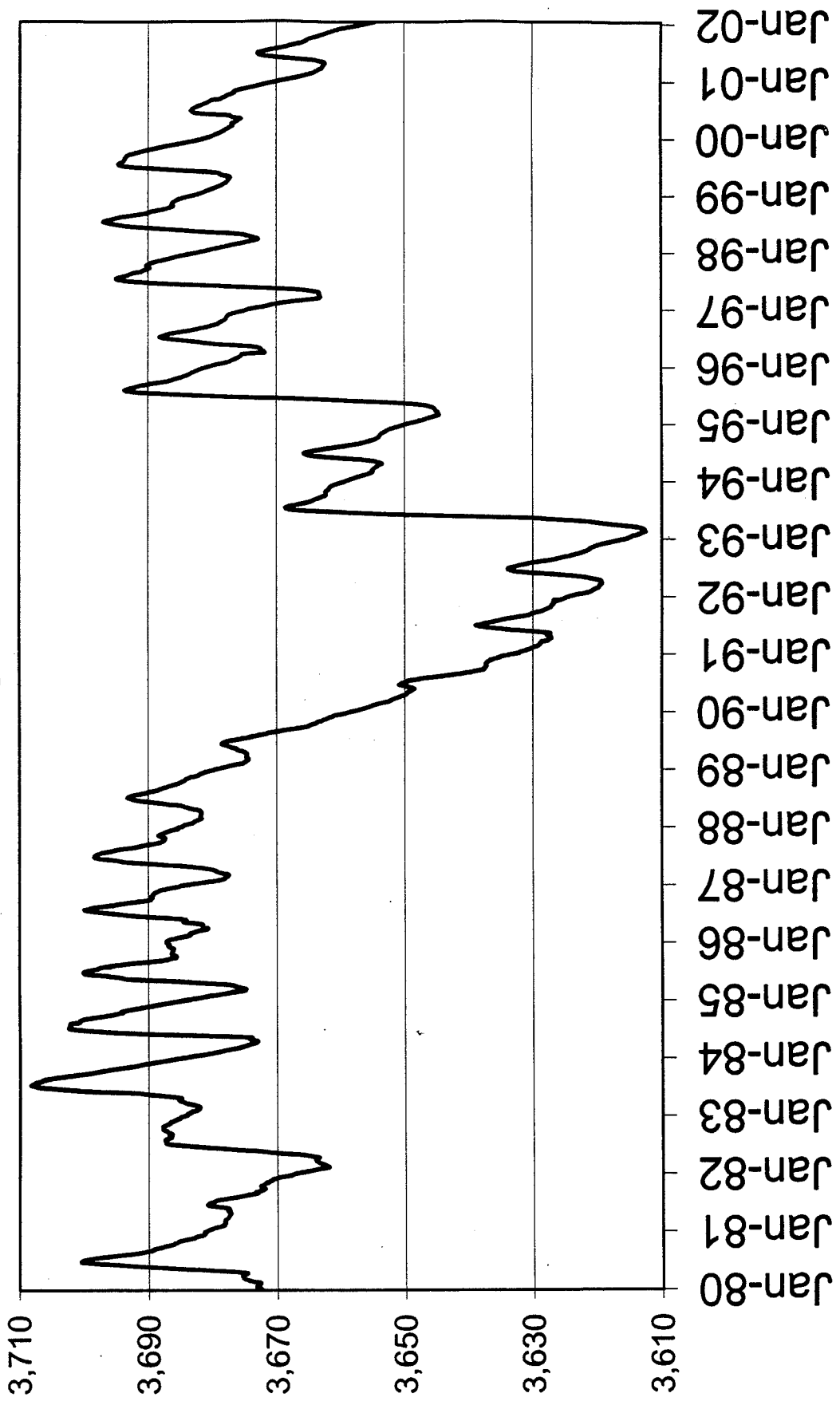


Lake Powell Elevations

Based on January 2002 Final Forecast



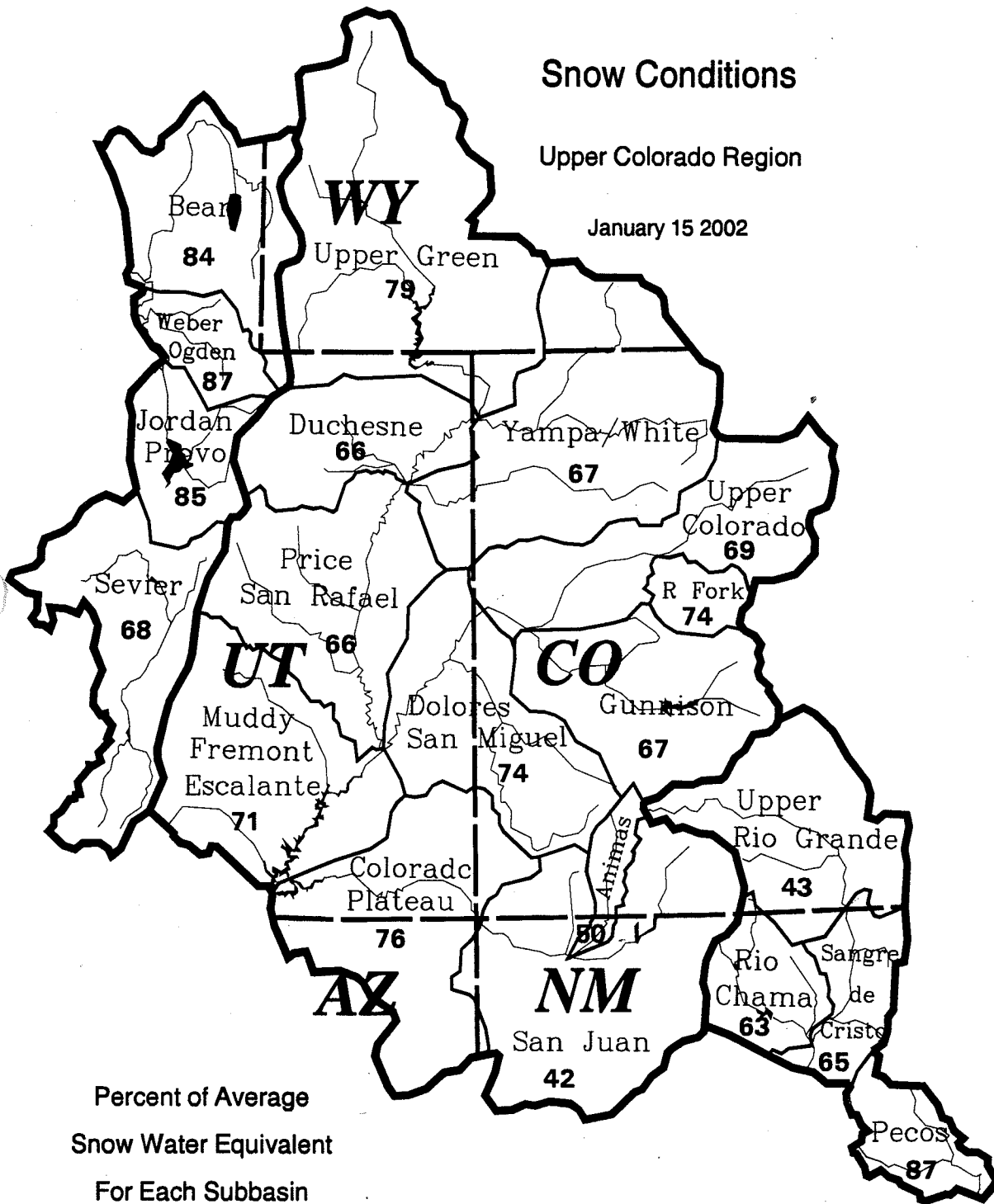
Lake Powell Water Surface Elevations 1980 through Present



Snow Conditions

Upper Colorado Region

January 15 2002



Percent of Average
Snow Water Equivalent
For Each Subbasin
Is Displayed

Upper Colorado
GIS
Region

Water Year 2001 Lake Powell Unregulated Inflow

