

Reclamation Water Information System (RWIS) - General Use

<http://water.usbr.gov>

Contact: rwis@usbr.gov
Jim Nagode
303-445-2038

Our Vision:

The RWIS project aims to build a Reclamation-wide system to publicly share Reclamation's water data in open formats on the web.

What does RWIS Do?

RWIS serves current and historical data from each of Reclamation's five regions. A map lets you get information by location, a query tool lets you select the sites and parameters that you are interested in, and a web service/API can automatically transfer data to your own tools, apps, and models. The pilot project started in Spring 2016 and 2017. Further development and transition from the pilot to a full-featured system is anticipated to continue in 2017-2018.

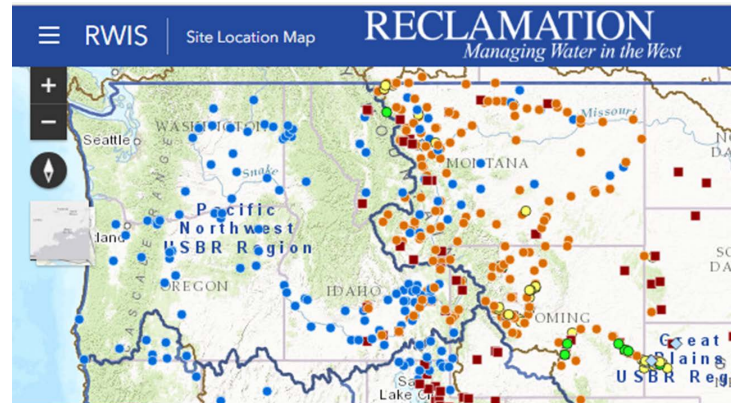
RWIS can give you the answers you need!

Q: I saw lots of water in the canals in a nearby agricultural area. When did the flows go up? How long are they usually this high?

A: Go on the map, select your basin, and get historical and current data on canal diversions, flows, and stage.

Q: I am worried about drought conditions in my region. Are water levels in those reservoirs below normal?

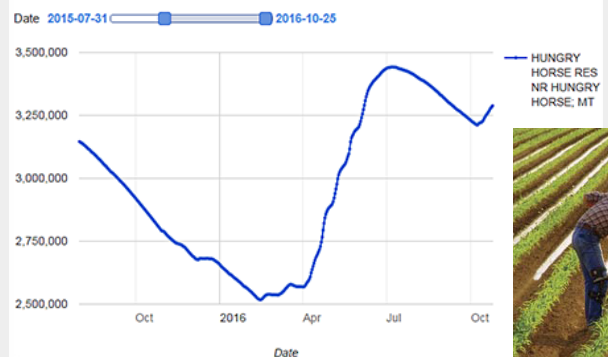
A: Go to the query tool, select your region and reservoir sites, and get current and historical reservoir levels.



Q: I want to plan my crops for the irrigation season. How can I see how past reservoir storage and weather conditions affected irrigation deliveries?

A: Go on the map, select your area, filter by type, and see weather sites. You can also look up reservoir, stream, and canal water levels.

Reservoir Storage (af)



Q: I want to go whitewater rafting. Which river in my area has the best reservoir outflows for rafting this weekend?

A: Go on the map, select, and get streamflow data.

ARKANSAS RIVER AT SALIDA; COLORADO

Streamflow (cfs)

Date
2016-06-08 00:00:00

Value
2181.57

