

Meeting Objectives

- Describe proposed alternatives
- Provide overview of NEPA/SEPA process
- Obtain feedback on issues and concerns about proposed alternatives

RECLAMATION

Study Process Overview

- Organize and Develop Plan of Study
- Pre-appraisal Investigation
- Appraisal Investigation (Pre-plan formulation)
- Feasibility Investigation (Plan formulation)
- Environmental Regulatory Requirements
- Alternative Selected
- Repayment Contract Discussions Begin
- Federal Appropriations
- Final Engineering Design and Specifications
- Award Construction Contract

RECLAMATION

Columbia River Partnership

- December 2004 – Columbia River Initiative Memorandum of Understanding
- February 2006 – State's Columbia River Water Resource Management Act

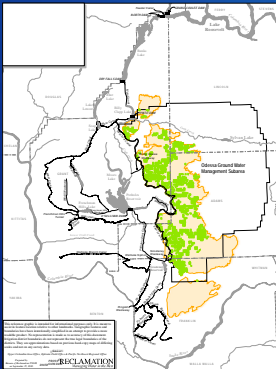


RECLAMATION

Study Purpose and Need

- Fulfill obligation in Columbia River Initiative to cooperatively study delivery of Columbia Basin Project water as a replacement for groundwater pumping
- Evaluate alternatives to replace current groundwater irrigation in Odessa Subarea

RECLAMATION



Study Area

RECLAMATION

Alternatives

Alternatives	Groundwater Acreage Supplied	Additional Columbia River Diversion (acre-feet)
No Action	0	0
Enlarge & extend East Low Canal/ Construct new East High canal system	127,300	453,200
Enlarge & extend East Low Canal	61,900	202,300

RECLAMATION

East Low / East High Alternative



- Expand capacity of East Low Canal south of I-90 and extend 2.3 miles
- Construct a new East High Canal system north of I-90

RECLAMATION

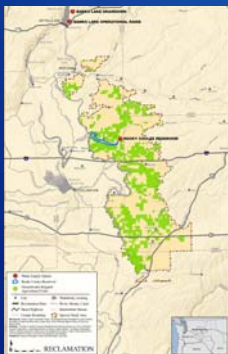
East Low Alternative



- Expand capacity of East Low Canal south of I-90 and extend 2.3 miles

RECLAMATION

Water Supply Options



- Banks Lake operations
Additional draw down
Two-foot operational raise
- Reservoir in Rocky Coulee
126,000 acre-feet

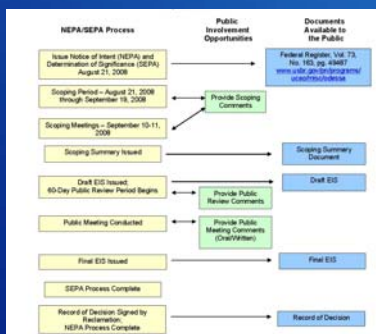
RECLAMATION

Groundwater Acreage Served

Water Supply Options		Storage Available (acre-feet)	Groundwater Acreage Supplied
Banks Lake	Draw down	50,000 per 2 ft.	16,700 per 2 ft.
	Two ft raise	50,000	16,700
Rocky Coulee Reservoir		126,000	46,900

RECLAMATION

NEPA/SEPA Process



RECLAMATION

Issues and Concerns Comment Boards

- Historic Properties / Cultural Resources
- Recreation
- Banks Lake Operations
- Aquifer
- Water Supply and Quality
- Social / Economic
- Fish
- Wildlife
- Vegetation
- Construction
- Hydropower
- Other Issues and Concerns
- Alternatives



RECLAMATION

Contact Information

Scoping comments through September 19, 2008

By mail: Ellen Berggren
Study Manager
Bureau of Reclamation
1150 North Curtis Road
Boise, ID 83706

By email: StudyManager@pn.usbr.gov

Fax: 208-378-5102

RECLAMATION

Questions?



RECLAMATION
