



Contact: Wendy Christensen, 509-573-8050

Tom Tebb, 509-575-3989

## Agenda

### Yakima River Basin Water Enhancement Project Workgroup

### Hybrid Meeting Information

September 14, 2022; 9:30 to 12:30 PM

- 
- |                 |  |
|-----------------|--|
| 9:30 – 9:40     | Welcome/Introductions and Agenda Overview/Public Comment <sup>1</sup><br><i>Ben Floyd, White Bluffs Consulting</i>   |
| 9:40 – 10:10    | YBIP Executive and Implementation Committee Updates<br><i>Wendy Christensen, Reclamation; Tom Tebb, Ecology; and Diani Taylor, Placuche Carr</i>   |
| 10:10 – 10:50   | Technical Projects Update <ul style="list-style-type: none"><li>• City of Yakima ASR and Nelson Dam - <i>Dave Brown, City of Yakima and Joel Freudenthal, Yakima County</i></li><li>• Toppenish Creek Passage Barrier Assessment; <i>Kelsey Harbick, Yakama Nation</i></li></ul> |
| 10:50 – 11:00   | Public Comment   |
| 11:00 – 11:15   | <b>Break</b>   |
| 11:15 – 11:30   | Yakama Nation Fisheries Strategy and Recent Community Events<br><i>David Blodgett, Yakama Nation</i>   |
| 11:30 – 11:45   | Municipal Water Supply Update and Next Steps<br><i>Arden Thomas, Kittitas County</i>   |
| 11:45 – 12:00   | Recognition – Senator Jim Honeyford<br><i>Tom Tebb, Ecology and Wendy Christensen, Reclamation and YRBWEP Workgroup</i>  |
| 12:00 – 12:30   | Roundtable Discussion – Workgroup Members<br><i>Ben Floyd, White Bluffs Consulting</i>   |
| 12:30 – Adjourn |  |

#### **2022 YRBWEP Workgroup Meeting - 12/14 (Yakima)**

For additional information, see the reports and documents available at this link:  
<http://www.usbr.gov/pn/programs/yrbwep/2011integratedplan/index.html>

---

<sup>1 1</sup> Public comment opportunities will be provided for each agenda item except for Welcome/Introductions, Workgroup Roundtable Discussion and the Public Comment agenda items. Those wanting to provide public comment during the designated agenda item need to message Jenna Scholz, HDR using the meeting chat function. Each commenter will be limited to 2 – 3 minutes for comments (depending upon number of commenters) to maintain meeting schedule. Additional written material can be submitted with comments for inclusion in the meeting notes. Previously provided comments are noted and not necessary to repeat.



































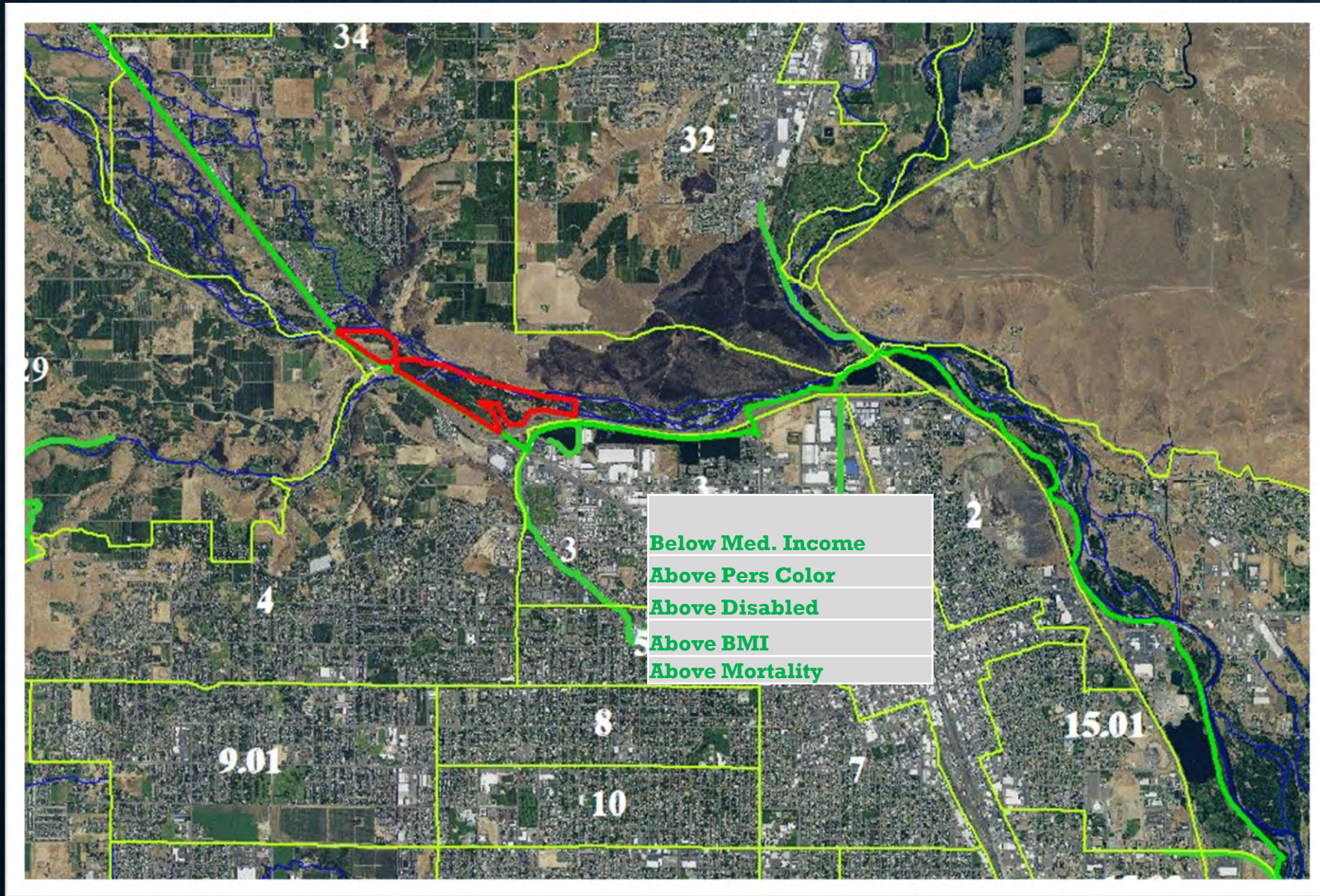




# NACHES COWICHE CONFLUENCE PARK

Yakima County Flood Control Zone District

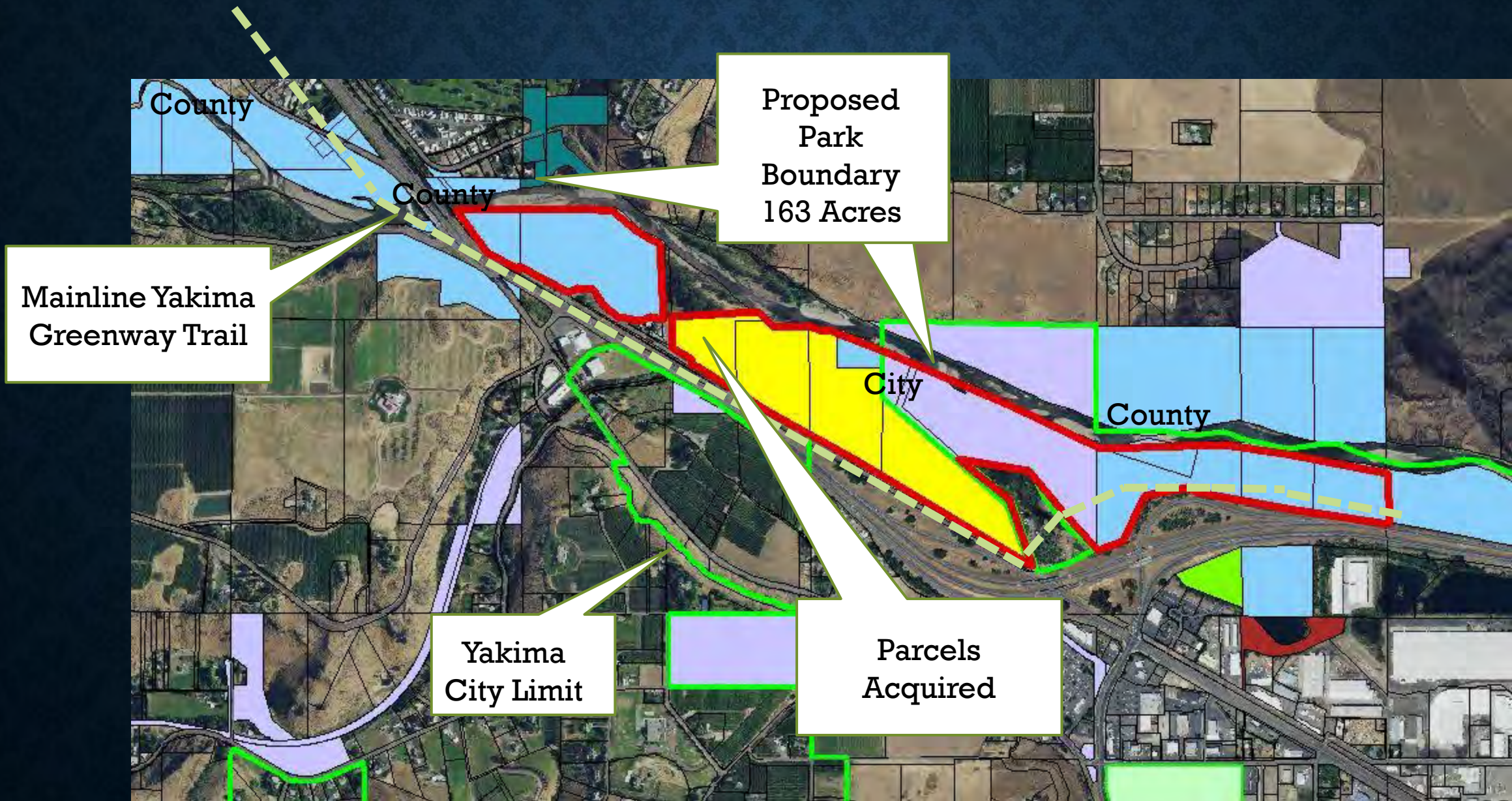




- Census Block
- Existing Trail
- Park Location

Lower Naches a







# RECREATION GOAL

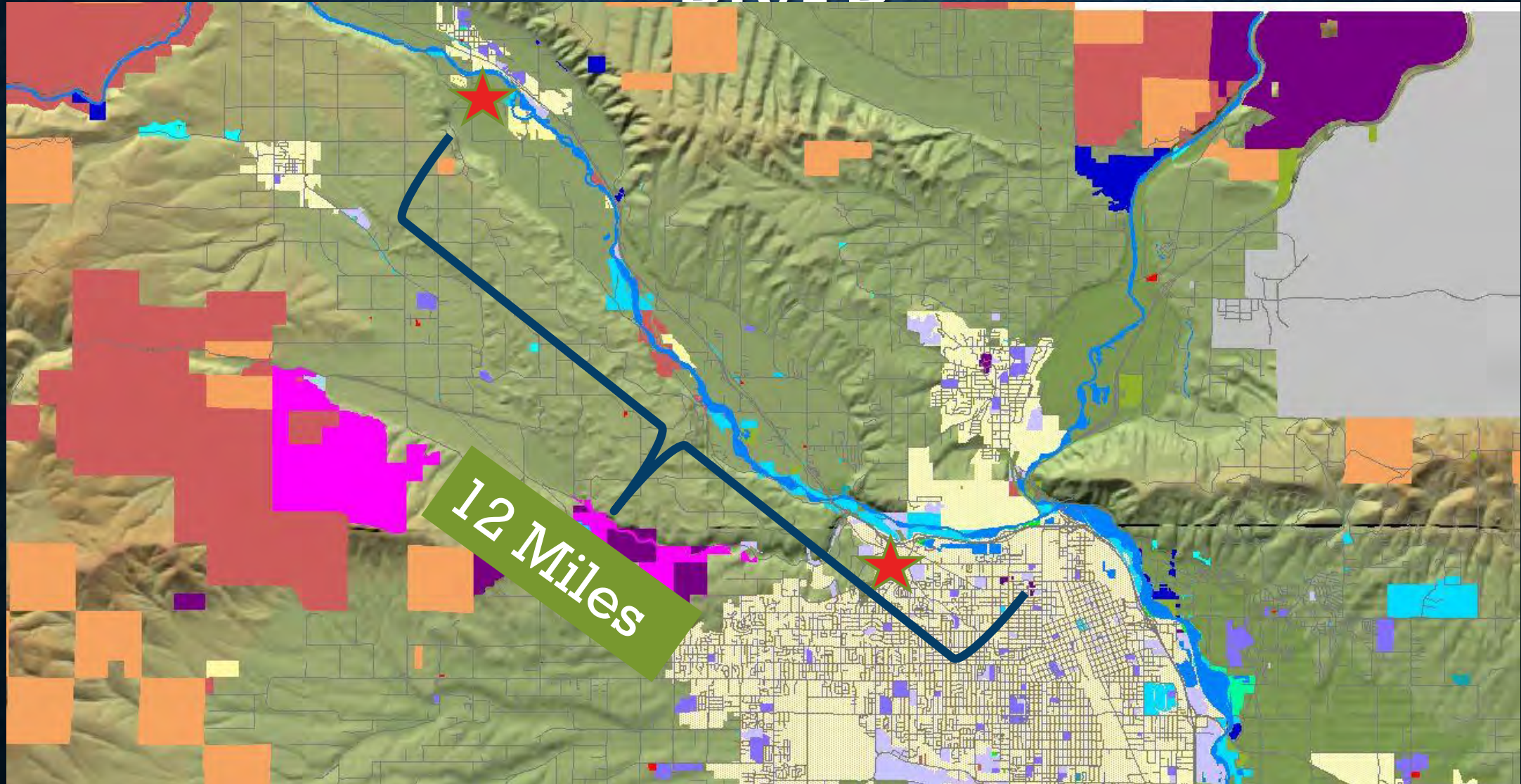
- 163 Acre Park Developed in and adjacent to City
- With Pathways and connected to existing Yakima Greenway Mainline paved trail connecting Cities of Yakima and Naches
- Open Space Park
- Raft/Kayak Launch Site – with new Nelson Dam provides access to 9 miles of river



SCOPE



# PUBLIC OWNERSHIP ALONG THE NACHES RIVER





# Site Suitability

- Consistent and enhances existing public purposes and large adjacent public ownerships
- Requires little change in existing site conditions, except for restoration actions and improvements such as parking lot and trail network which are consistent with environmental constraints and goals.
- Is adjacent to current and future high density commercial, industrial and residential with easy access from those uses.
- Provides acreage, nature viewing, trail, shoreline access for open space and human powered rec.





# COST EFFICIENCIES

## Property Dedications

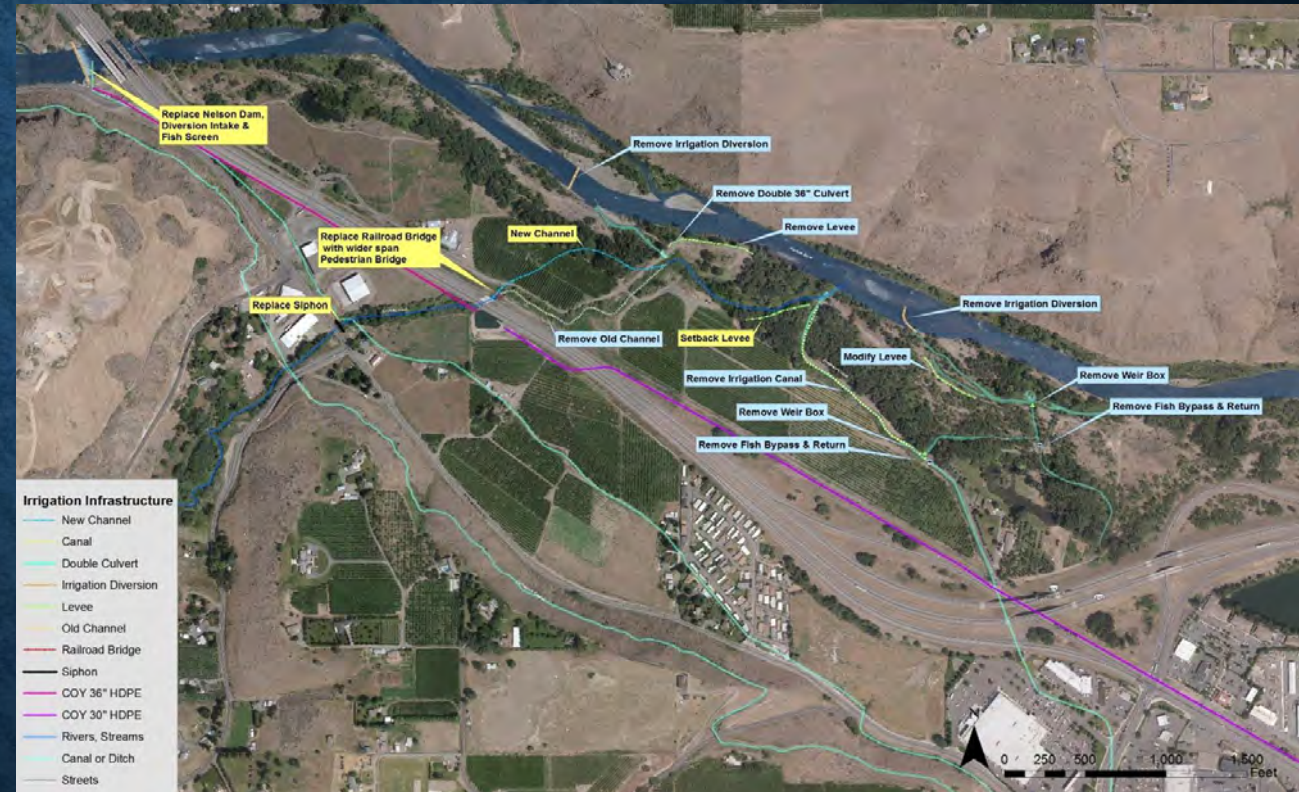
- Currently owned unconstrained parcels
  - Yakima County – Former BNSF (5 acres)
  - FCZD – Ranney Well and Orchard Properties
  - City of Yakima – Powerhouse Canal Diversion Parcel
- Currently owned constrained parcel
  - Yakima County – Garretson, Rassmussen (SRFB funded)

## Site Improvements

- Demolition of structures, vegetation conversion covered by other in-progress projects.
- Actively applying for IIJA funds for final design as components of other infrastructure projects.

## Access

- Site already incorporated into Transportation and Trails Plans for this area of rapid population growth.





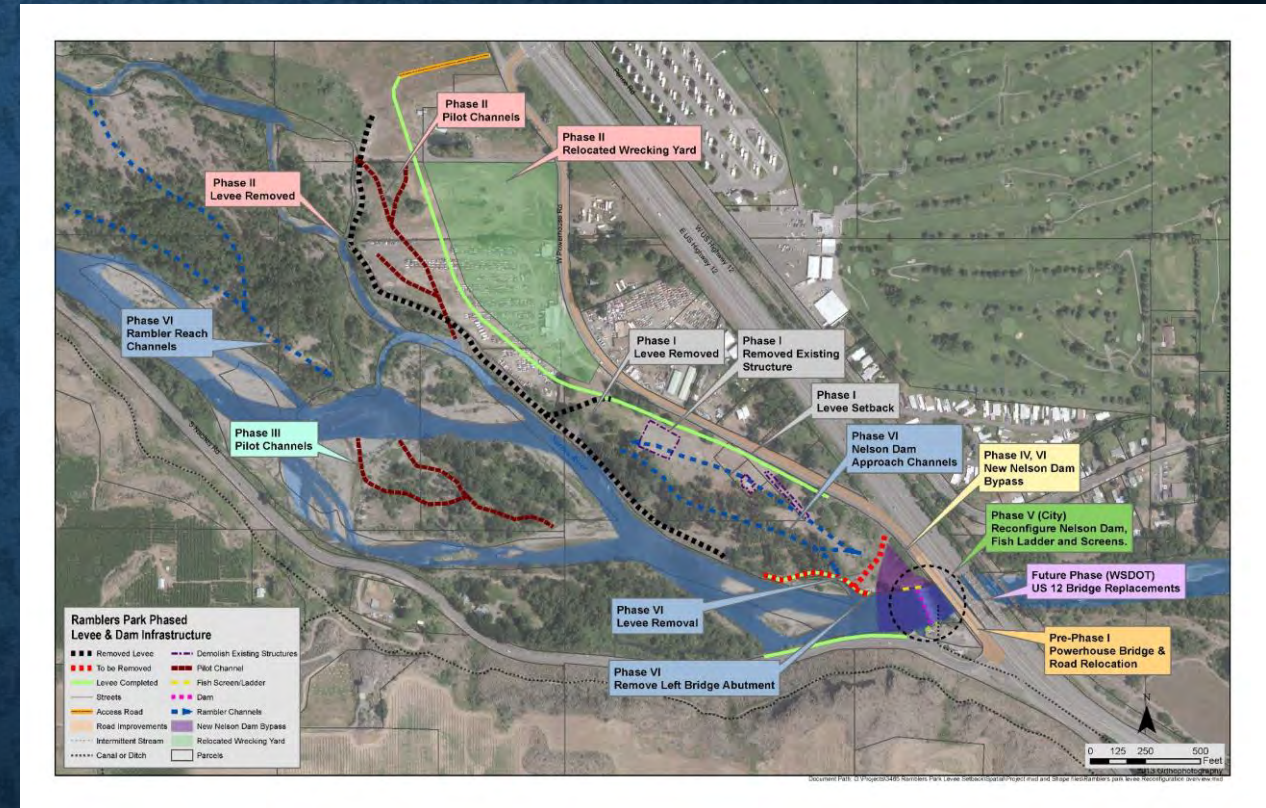
# COST EFFICIENCIES

**Recovery Plan for Steelhead Action** – final pieces of making Cowiche fully accessible, restores side channel habitats on Naches

**Upper Yakima and Naches CFHMPS** – rework Nelson and Ramblers Park, replace low capacity bridges on Powerhouse and US 12

## Other Cost Efficiencies

- Recent past and current adjacent projects will have completed almost all necessary Archeological, Wetland, and OHWM determinations. Will reduce both design and permit costs.
- Other adjacent projects will be concurrently designed, demolition, construction and revegetation will all be constructed in context with each other.





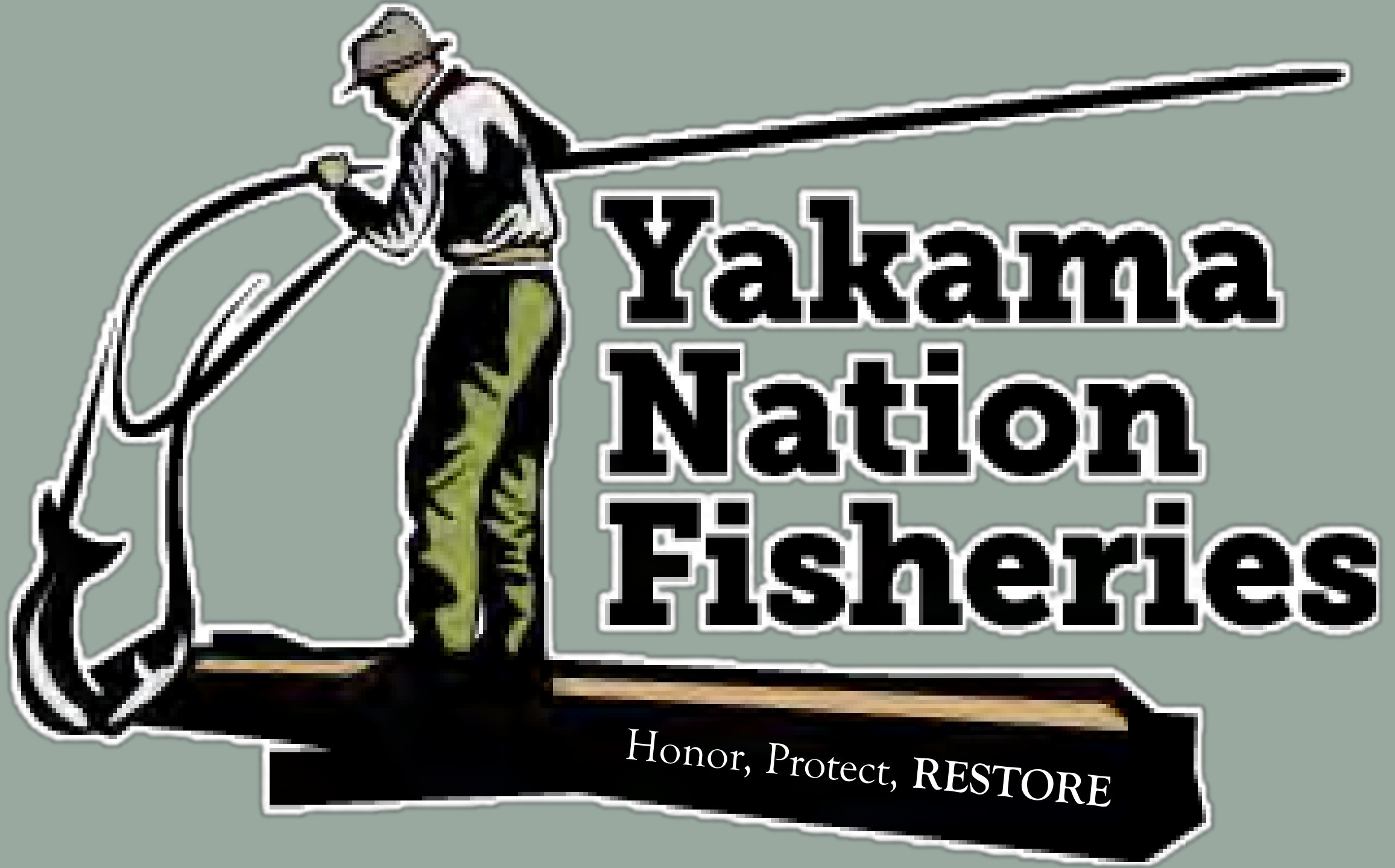
# Toppenish Creek Passage Assessment



Kelsey Martin Harbick, Yakama Nation Fisheries







# Yakama Nation Fisheries

Honor, Protect, RESTORE







# Understanding the Issues

In order to restore Toppenish Creek and the resources it supports, we need to have thorough knowledge and understanding of the problems.

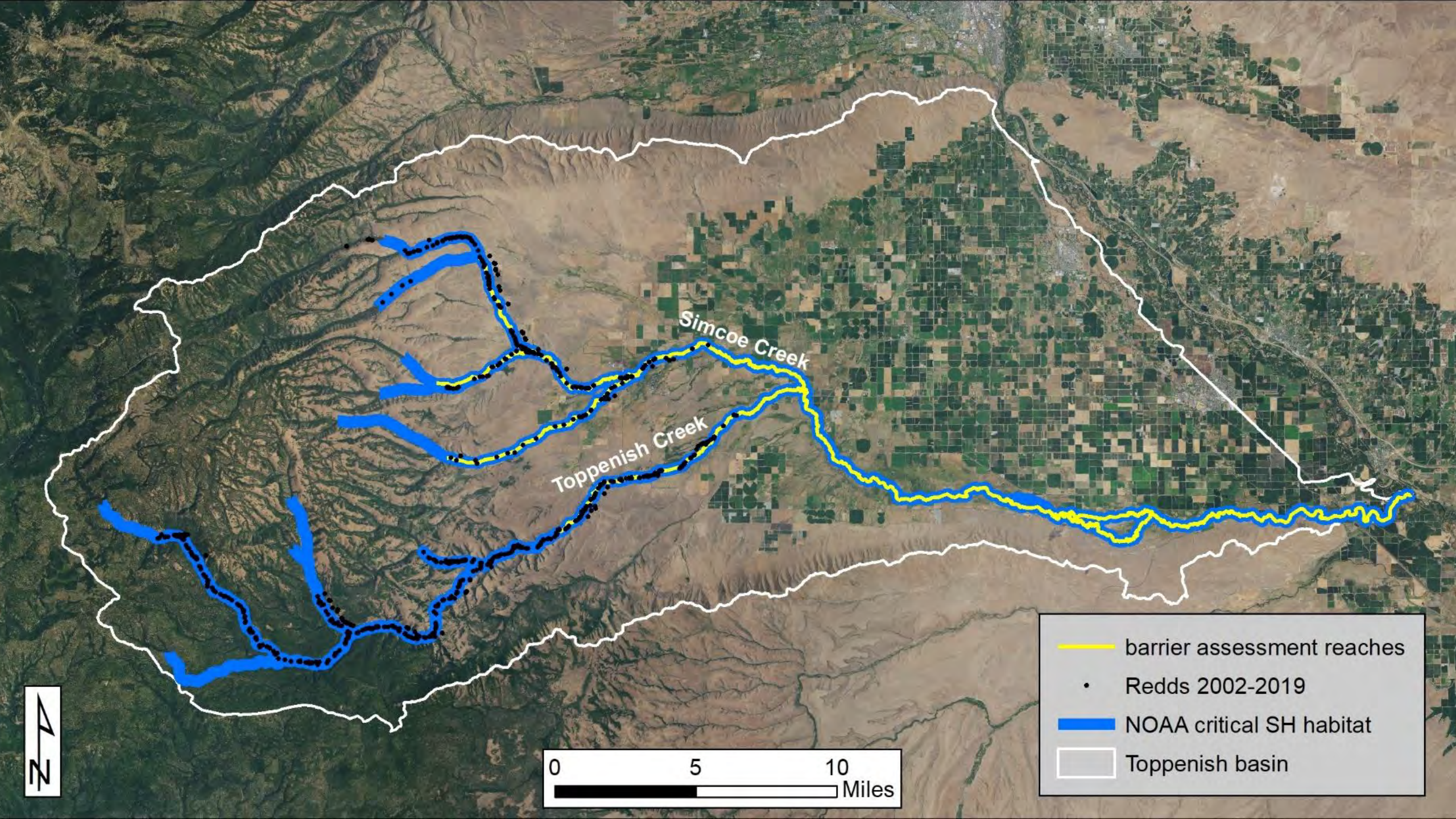


# The Toppenish Creek Passage Assessment Can Help!

## Primary Goals:

- Create a comprehensive inventory of instream features in Lower Toppenish Creek
- Assess each feature for fish passage
- Shed light on why juvenile steelhead survival is so low in lower Toppenish creek
- Prioritize problem features for correction







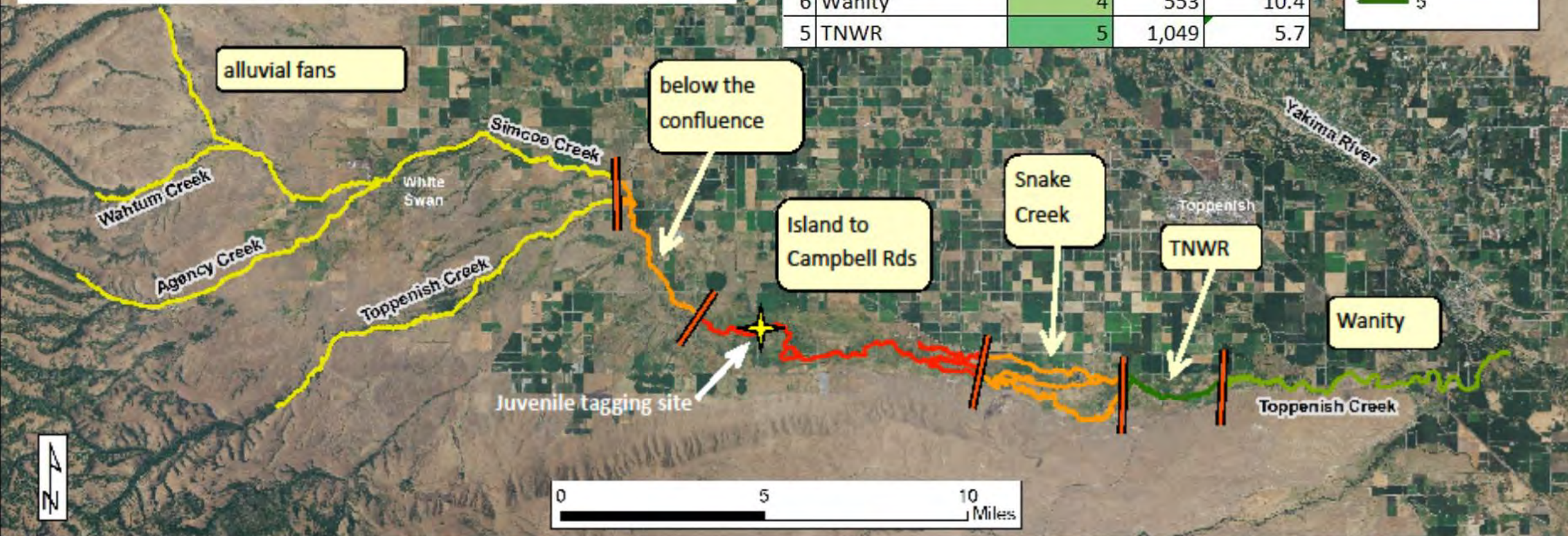
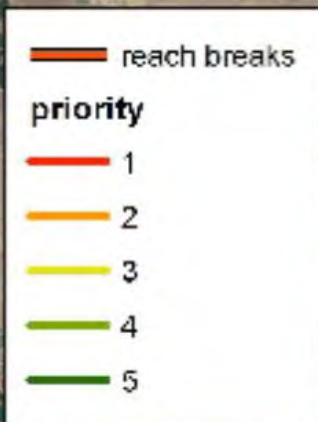
# Background

- Funded in 2021 by a SRF Board Grant
- Surveys began in spring of 2022
- Expected to complete surveys after the 2023 field season



**Reach priority map.** Reaches downstream of the tagging site were prioritized by known smolt mortality, with highest mortality reaches ranked higher. The areas upstream of the tagging site have unknown mortality and were prioritized by staff knowledge reach conditions, with perceived worse passage conditions ranked higher. TNWR ranked lowest because USFWS staff have already conducted passage assessments there. Please see our replies to review comments in PRISM for more details.

ID	Name	Priority	Acres	Reach length (miles)
3	Island to Campbell	1	2,050	18.6
2	below confluence	2	201	5.5
4	Snake Creek	2	744	10.3
1	alluvial fans	3	2,014	41.2
6	Wanity	4	553	10.4
5	TNWR	5	1,049	5.7





# Survey Methods

- WDFW Fish Passage Inventory, Assessment, and Prioritization Manual
- Survey123
- Kayak Surveys!
- Walk sections that are not navigable



# Survey Stats to Date

- Distance kayaked: About 34 miles
- Days spent training, planning, setting up technology, data QA/QC: over 200 hrs
- Number of kayak days: 12
- Number of different obstructions/diversion etc.
  - Total: 79
  - Culvert Crossings: 3
  - Non-culvert crossings: 27
  - Dams: 7
  - Other: 21
  - Diversions: 30
- Total time on survey to date: about 142 hours









flow down  
creek

flow to ditch

















































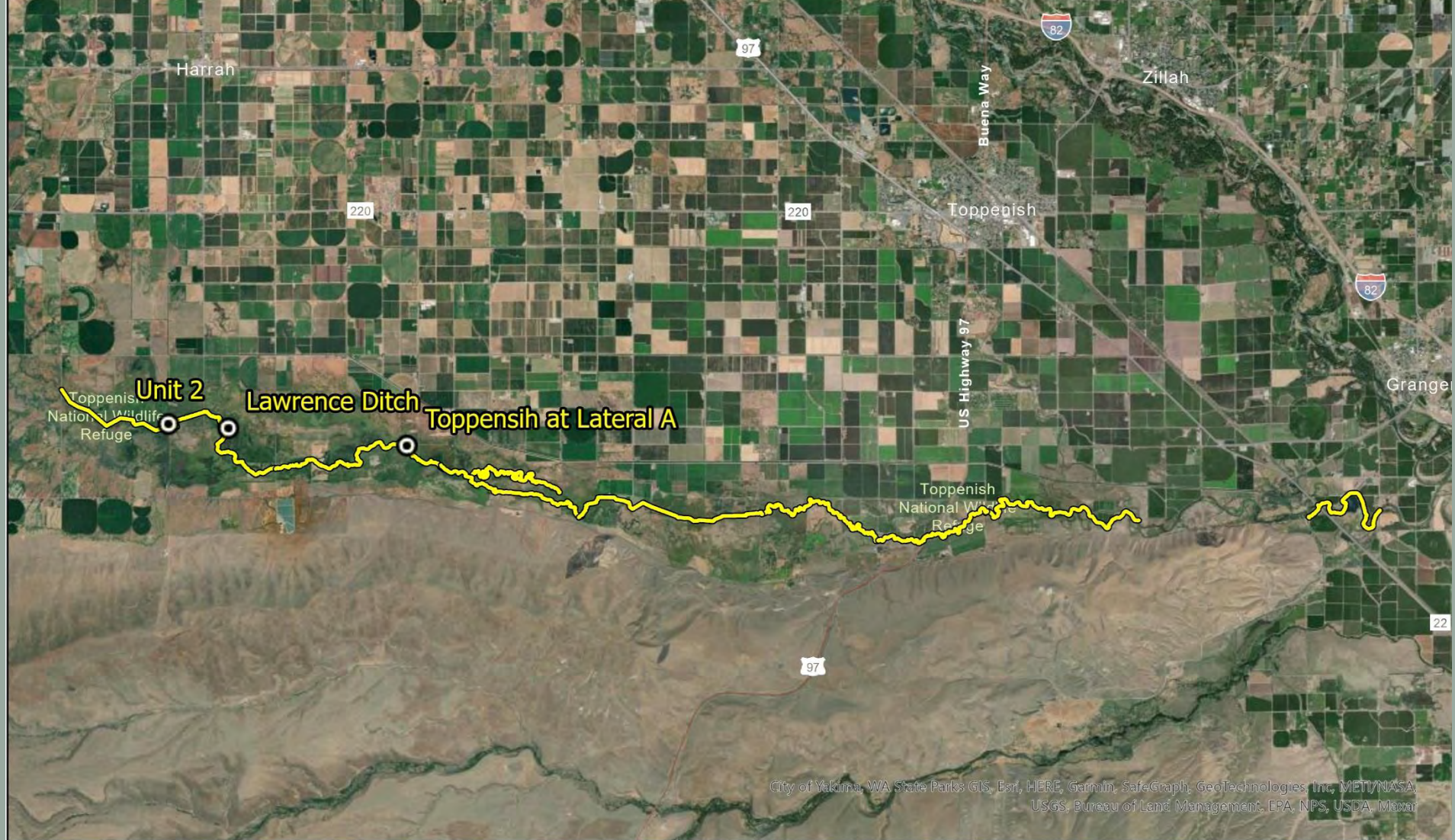










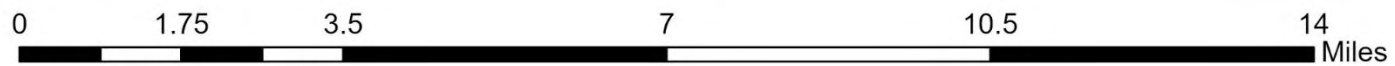


## Surveyed Reaches 2022



### Legend

— Kayak Surveys

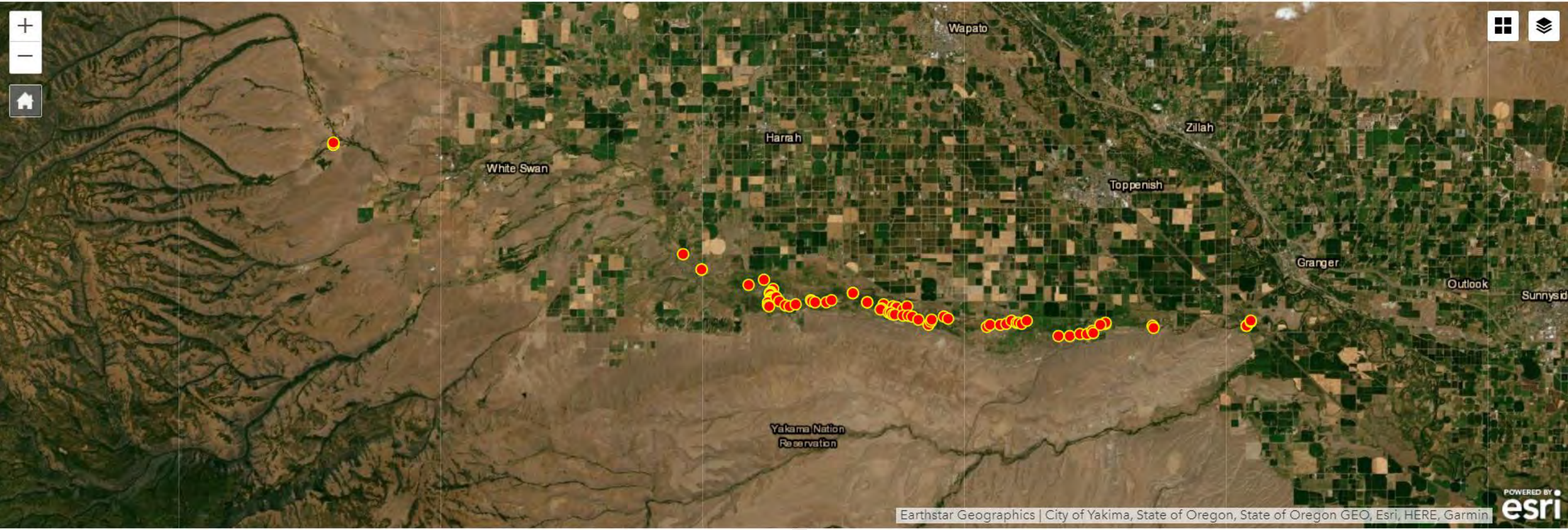




YN\_Fish\_Passage\_Mobile

Overview Analyze **Data**

☰ ↻ 7/5/22 - 9/9/22 ⚙ Filter Report Export ▾ Open in Map Viewer Form view ☐ 80/80



Earthstar Geographics | City of Yakima, State of Oregon, State of Oregon GEO, Esri, HERE, Garmin



Prioritize

















# Summary

- 3 more kayak survey days this fall
  - Culvert assessments
- Complete inventory by Fall 2023
- Develop method to assess floodplain stranding risk
  - Prioritize features for correction
- Increase knowledge of the issues in Lower Toppenish Creek



# Questions?





# Yakama Nation Comprehensive Salmon Recovery Strategy

An overview for the YBIP  
Sep 14, 2022





# What is the YN CSRS?

- A long-term strategy to promote and implement real actions that lead to the protection and enhancement of healthy and harvestable salmon populations in the Columbia basin
- Builds upon previously identified needs (i.e., CBP Phase 1 and 2 reports and Wy-kan-ush-mi Wak-ish-wit) to get to implementation ASAP.
- Outreach, Advocacy, and Lobbying are critical components





# Major Elements

- Get fish co-manager back in the drivers seat for fish management
- Billion dollar backlog
- Dam breeching needs to remain on the table
- Develop an energy future that doesn't place the burden solely on the tribes and natural resources





# Billion Dollar Backlog

- Immediate funding to implement:
  - outstanding production obligations/mitigation
  - Deferred maintenance for hatchery infrastructure
  - Increased habitat restoration efforts
  - Fish passage and barrier removal
  - Predation management
- Sediment Dredging and management caused by the dams





# YN CSRS Outreach

Outreach event	Dates
■ 25 <sup>th</sup> Anniversary Celebration of Levi George Hatchery	■ July 15, 2022
■ Willamette Lamprey Celebration	■ July 30, 2022
■ Honor the Wykanish	■ Aug 9, 2022
■ Honoring Chamna	■ September 1, 2022
■ 10 <sup>th</sup> Anniversary of Condit Dam Removal Celebration	■ October 7 <sup>th</sup> , 2022 (tentative)















# Honoring Chamna





# Honoring Chamna





# Honoring Chamna





# Honoring Chamna





# Honoring Chamna





# Municipal Water Supply

Workgroup Meeting  
September 14, 2022

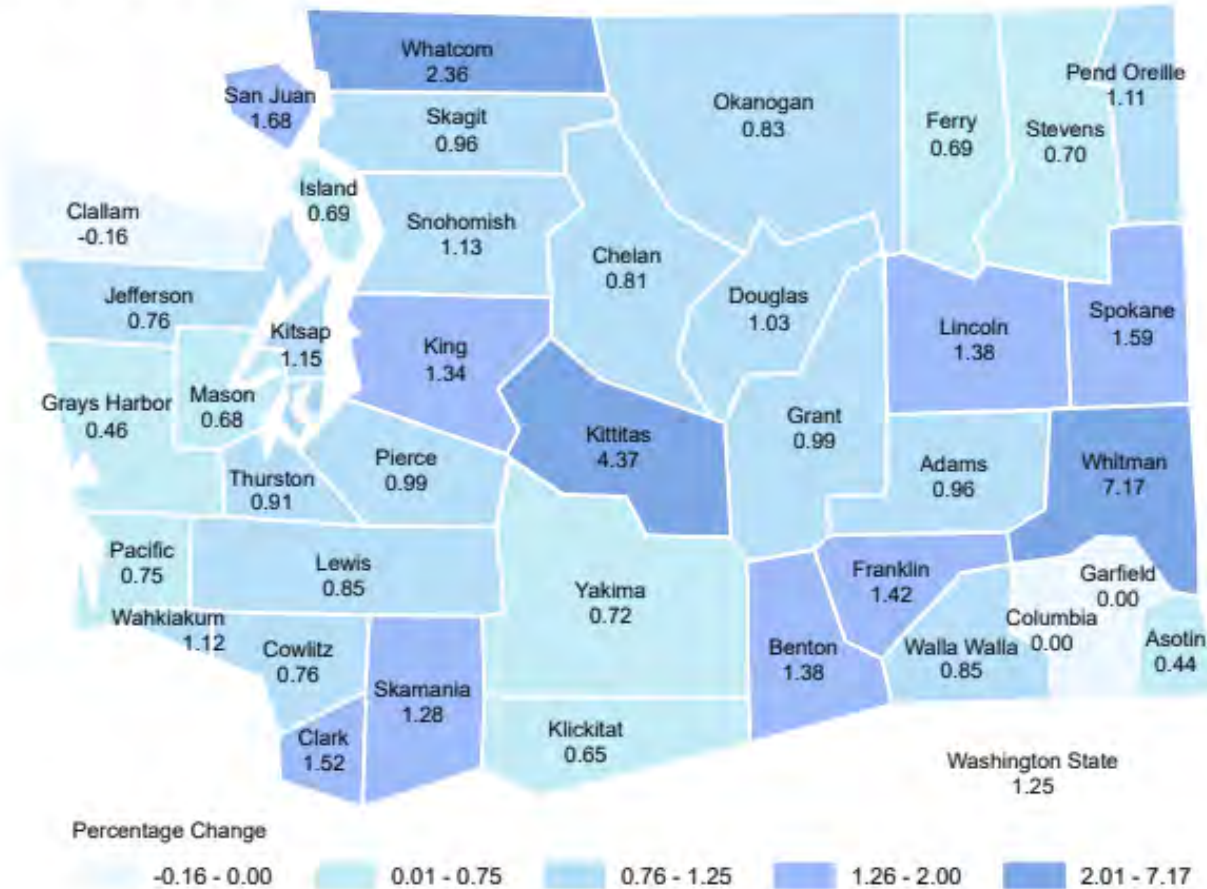


# Yakima River Basin Integrated Water Resource Management Plan Purpose and Need

*The current water resources infrastructure, programs, and policies in the Yakima River basin have not been capable of consistently meeting aquatic resource demands for fish and wildlife habitat, dry-year irrigation demands, and municipal water supply demands.*



## Percentage Change in Population: 2021–22



Source:  
Washington State  
Office of Financial  
Management  
6/29/2022 Press  
Release



# Types of Municipal Sources



## Large Public Systems

8 Largest Systems in the Basin:

City of Yakima

Nob Hill Water Association

Yakima County – Terrace Heights

Ellensburg Water Department

City of Sunnyside

City of Prosser

City of Grandview

City of Toppenish



## Small Systems

Smaller Jurisdictions

Special Purpose Water Districts

Kittitas Co. (7)

Benton Co. (4)

Yakima Co. (2)

Small Group Systems that serve subdivisions

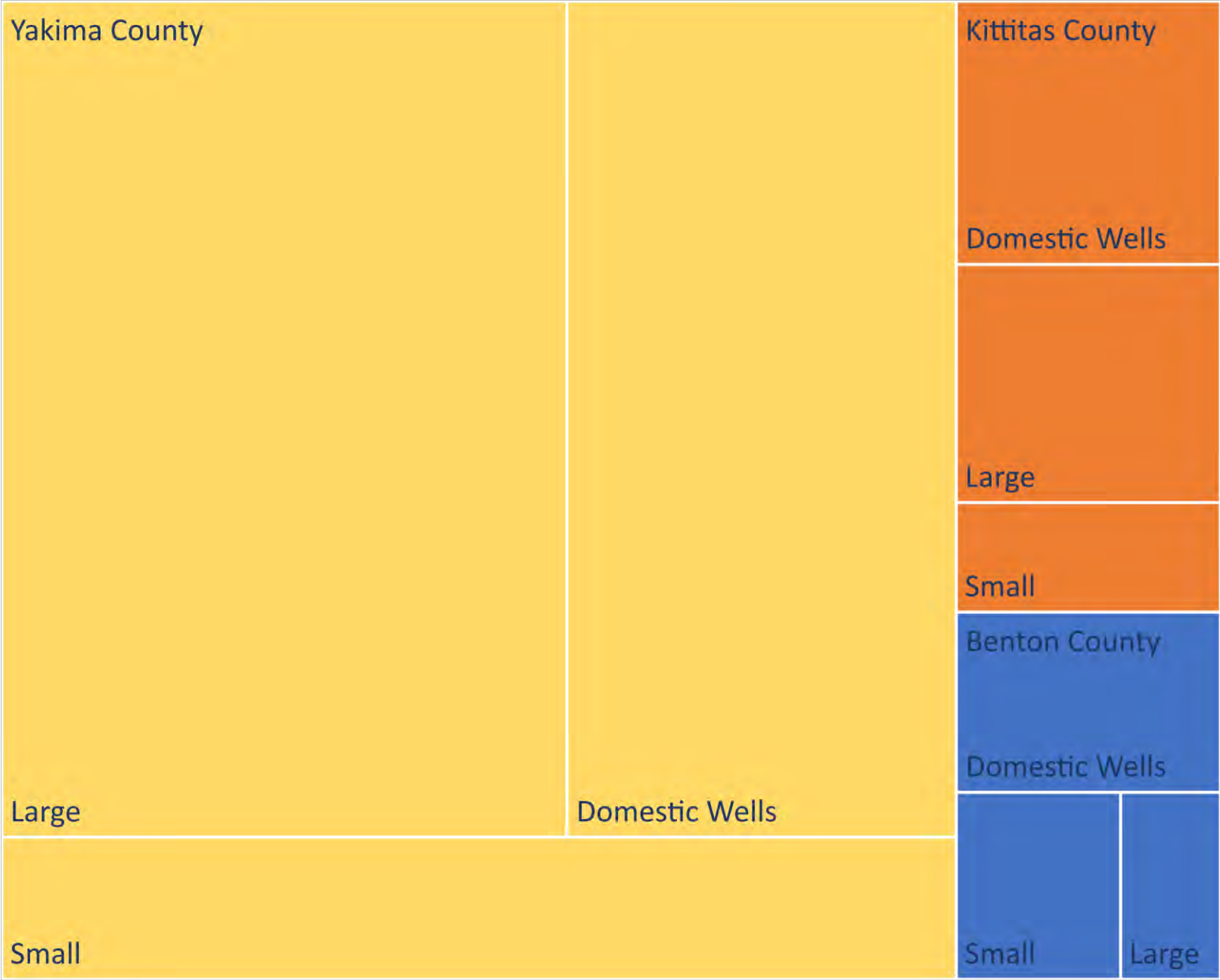


## Domestic Wells

Individual Wells



Municipal  
Water Use  
Through the  
Yakima Basin:  
Estimated  
Population  
Served





# Municipal Water Supply Progress

2015



Kittitas County Public Water Bank

2017



**YAKIMA**  
COUNTY

**Yakima County Water Resource System (YCWRS)**

Water Availability - Adequate Water Supply - Well Permit

2020



**BENTON COUNTY WA**

Planning Department

**Benton County Rural Water Supply Program**

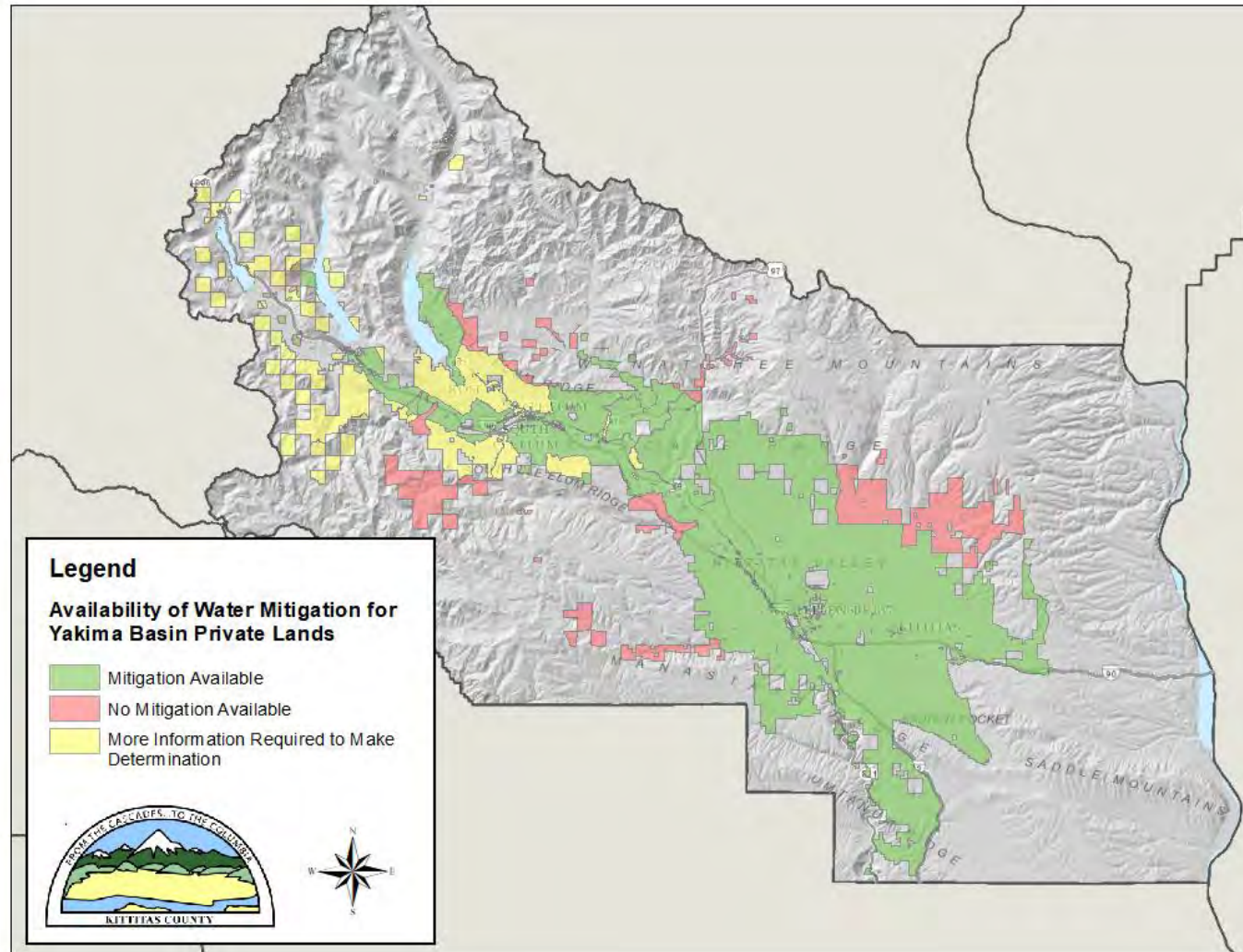


## Market Reallocation

- Senior water rights purchase
- For domestic groundwater wells:
  - All new groundwater use offset
  - Metering required

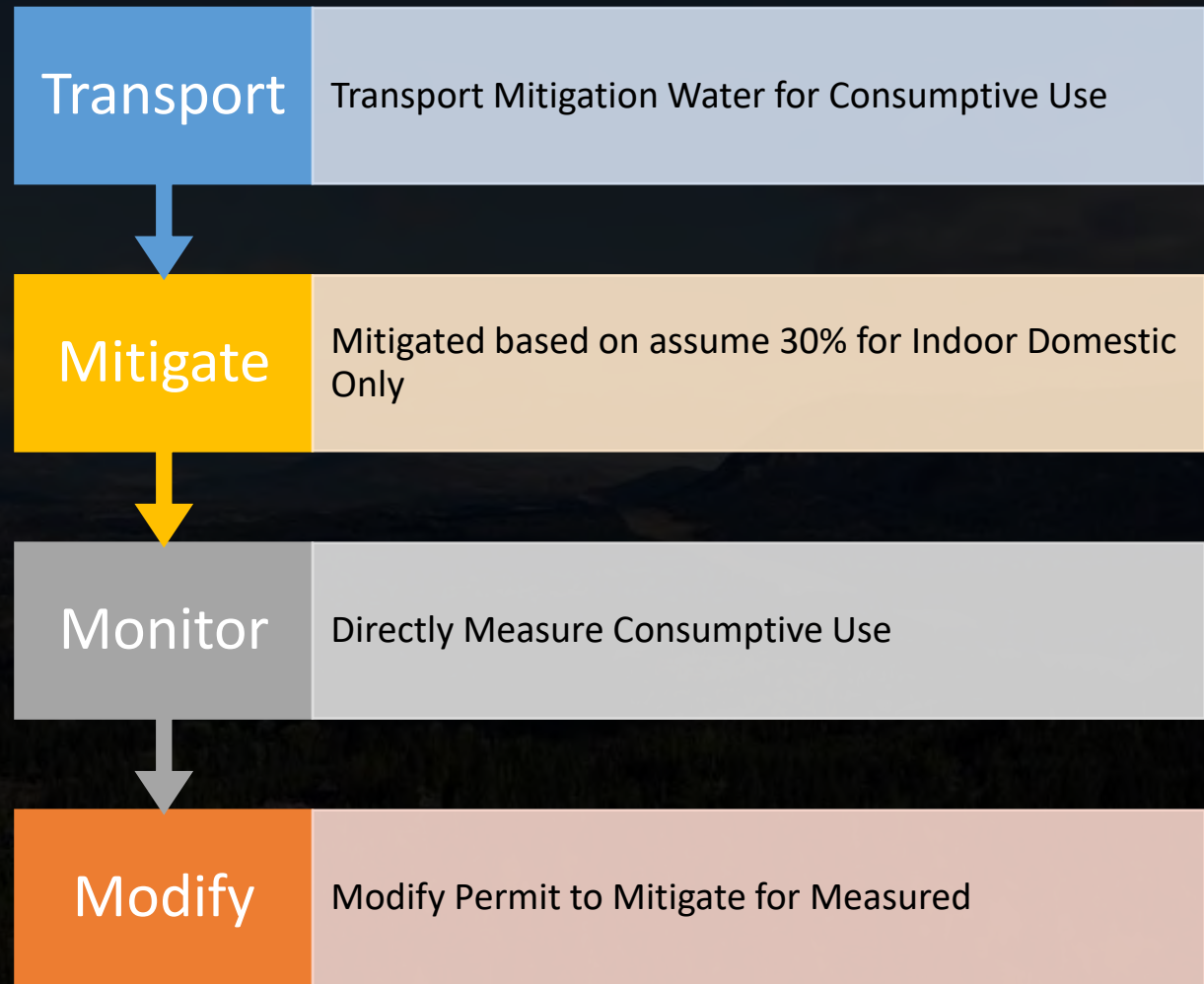


# Municipal Water Supply – Areas Without Availability





# Public-Private Partnership: Innovative Mitigation Approach







## Water Banking Grant Opportunities





# Municipal Water Supply Progress

---



## Groundwater

City of Yakima Aquifer  
Storage and Recovery  
Ellensburg GW Proposal



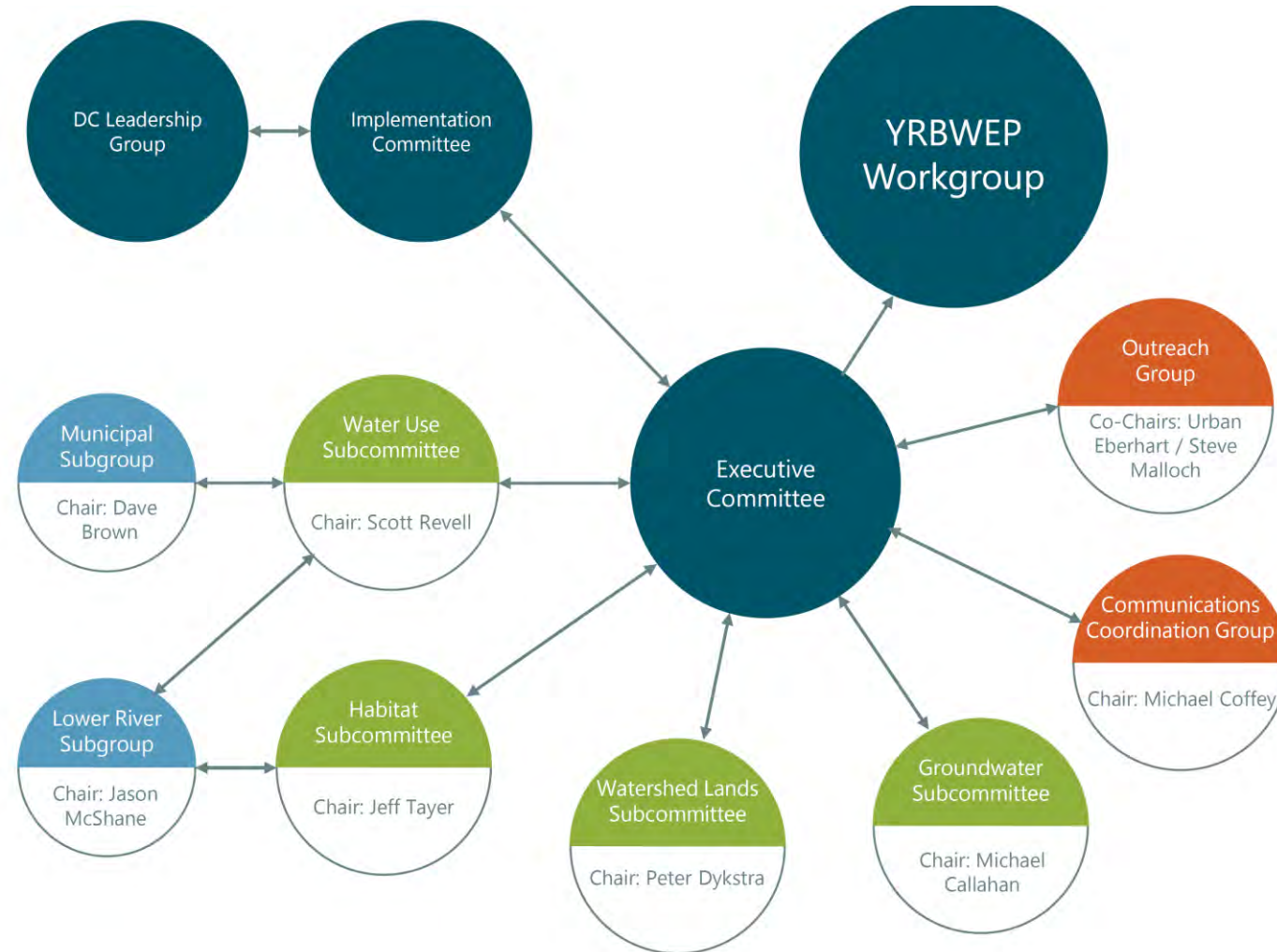
## Water Conservation

Heritage Garden Program  
Public-Private Partnership  
Consumptive Use study

Image Credit: Heritage Garden Facebook Page



# Municipal Workgroup





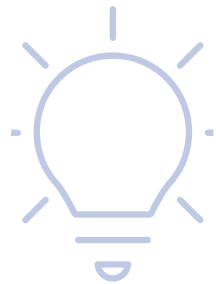
# Draft Work Plan



Identify and Quantify Vulnerabilities and Need



Leverage Existing Review Processes



Outreach