

# WATERSHED LANDS PHASE 2 PLAN



YRBWEP WORKGROUP  
SEPTEMBER 16, 2021

# HEALTHY WATERSHEDS ARE ESSENTIAL TO ENSURE WATER FOR FISH, FAMILIES, AND FARMS



## Phase 2 Watershed Lands Plan

- Building on successes in first phase and adaptive to make biggest contribution to YBIP
- Identifying and engaging new partnerships, knowledge, and tools

# SUBCOMMITTEE MISSION



- Implement Targeted Watershed Protections and Enhancements
- Liaise with aligned entities
- Advise on land-related issues in YBIP



# SUBCOMMITTEE MEMBERS



- Mike Livingston (Jeff Tayer alt), **WDFW**
- Larry Leach, **WDNR**
- Wendy McDermott, **American Rivers**
- Michael Callahan (Rachael Stendahl alt), **Ecology**
- Cory Wright (Arden Thomas alt.), **Kittitas County**
- Joel Freudenthal, **Yakima County**
- Janine Empel (Jeanne Demorest alt.), **Reclamation**
- John Marvin, **Yakama Nation**
- Darcy Batura, **The Nature Conservancy**
- Joe Rausch (Kathryn Furr alt.), **USFS**
- Urban Eberhart, **Kittitas Reclamation District**
- Peter Dykstra, **Chair**



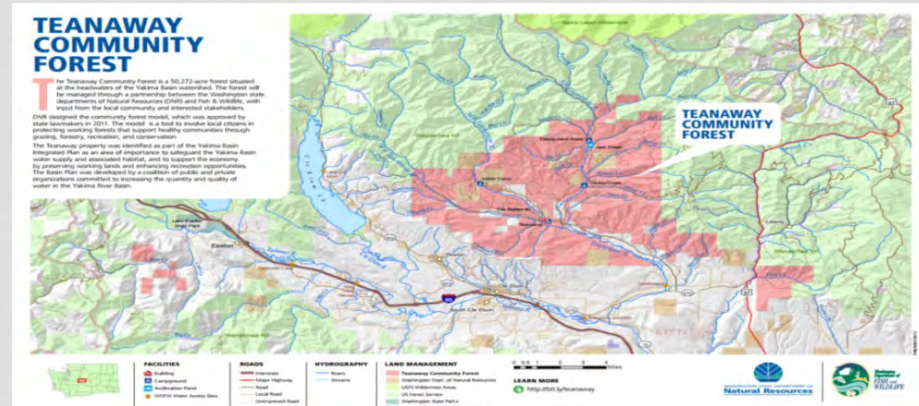


## ACCOMPLISHMENTS



## Land Acquisitions:

- Secured 55k acres of forestland (met target in 2015)
  - Participated in development of TCF Management Plan and Recreation Plan
  - Worked to secure funding for ongoing maintenance and stewardship (more to do here)
- Secured 7,375 acres of shrub-steppe (50% of target to date)



# PHASE 2 – TAILORING OUR APPROACH



- Actions to protect, maintain and restore healthy watershed lands
- Expand and deepen partnerships to leverage efforts
- Reinforce/enhance land contribution to YBIP goals

# PHASE 2 – WHAT AND HOW

*Apply new knowledge to refine the Watershed Lands Conservation Plan*

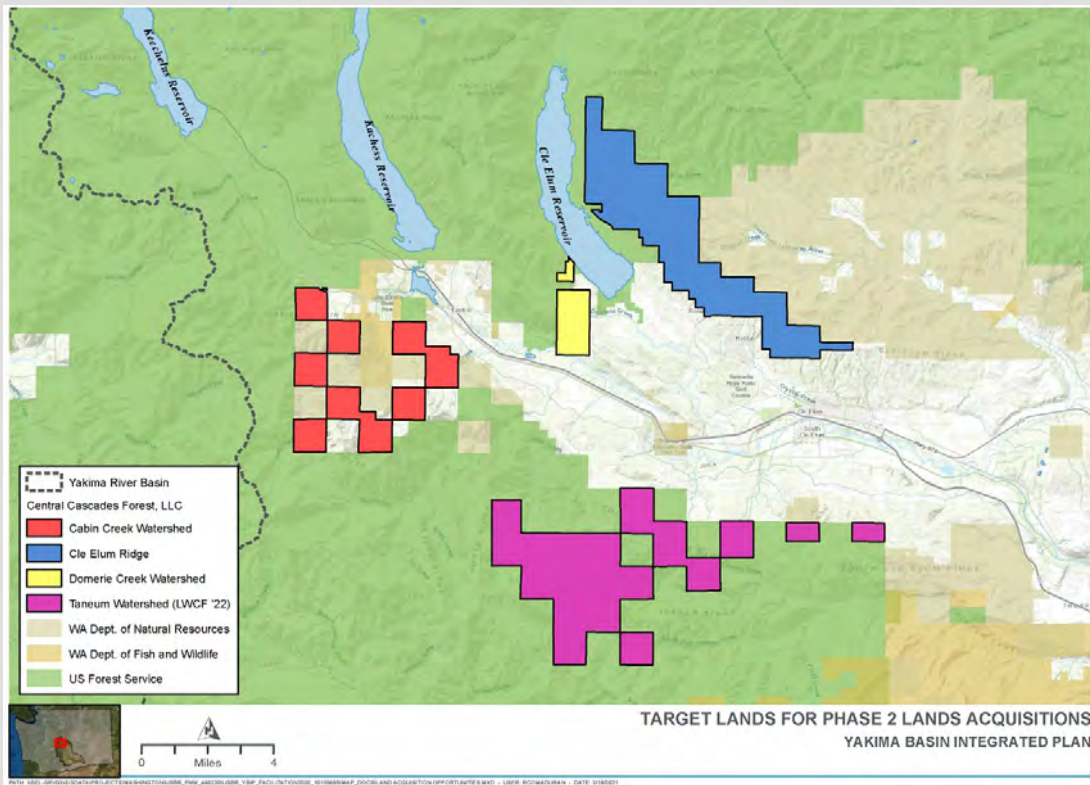
## Focus areas:

- Advance Target Land Acquisitions from Willing Sellers
- Promote Strategic Designations Efforts
- Support Forest Health and Management Activities





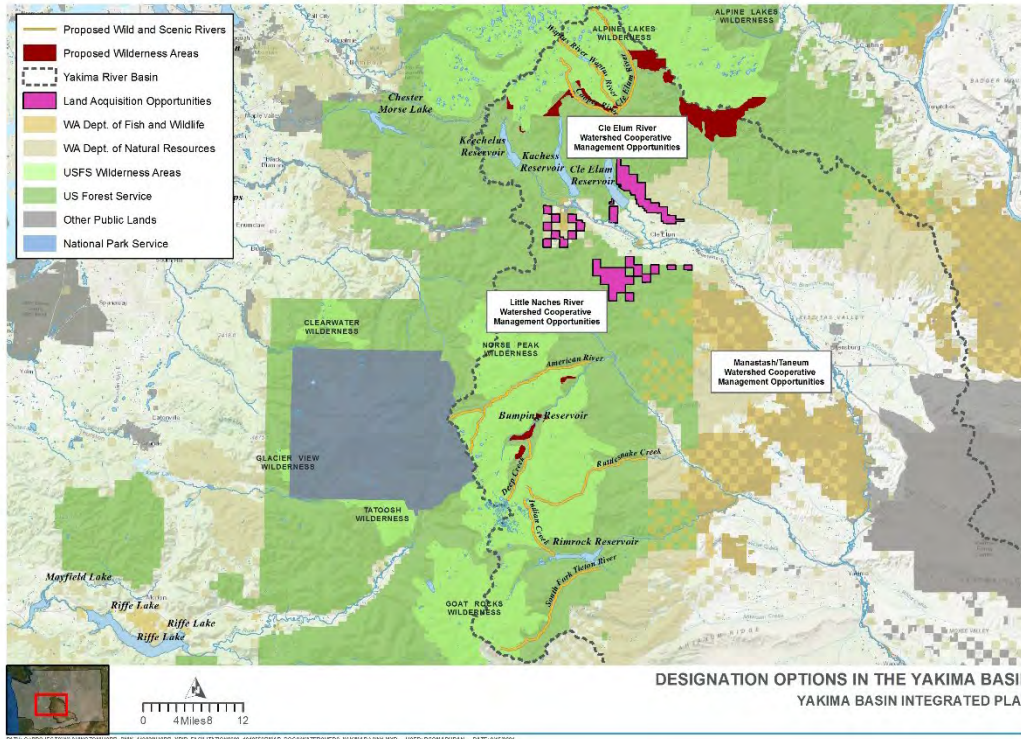
# ACQUISITIONS ELEMENT



- Carries forward forestland acquisition targets from Phase 1
- All parcels currently owned by Central Cascades Forests LLC.
- Supporting LWCF request for Taneum watershed parcels



# DESIGNATIONS ELEMENT



- Introduces Cooperative Management Designations approach
- Brings forward Wild and Scenic/Wilderness designation options from Phase 1

# FOREST HEALTH & MANAGEMENT ELEMENT



- Aimed at improving snowpack retention, reducing fire risk, improving forest healthy resiliency, and creating economic value
- Enhance synergies with Tapash Collaborative, Western Watershed Enhancement Partnership, Checkerboard Partnership, and other efforts in the Basin

# NEXT STEPS

- Dialogue about long-term ownership of additional land acquisitions
- Focus on Cle Elum Watershed Cooperative Management Designation
- Collaborate with partners on acquisitions and forest health elements to determine next steps





# QUESTIONS AND COMMENTS?

