



# Targeted Watershed Protections and Enhancements Draft Subcommittee Proposal

YRBWEP Work  
Group Meeting

October 12, 2011



# Purpose

- Ecosystem conservation and restoration linked to the Plan's water resource management actions
- This includes:
  - Protect and restore forest lands that support watershed and ecosystem functions
  - Protect and restore lowland shrub-steppe habitat

# Integrated Plan Proposal

- Land Acquisitions
  - Teanaway Forest Lands
  - Little Naches, Manastash and Taneum Headwaters
  - Yakima River Canyon
  - (.....or other comparable lands.....)*
- Protective Designations
  - Wilderness or other protective designations on specific lands in headwaters and at Bumping Lake
  - Wild and Scenic River Designations

# Subcommittee Activities

- Developed principles for carrying out the program
- Identified “backup” options for land acquisitions
- Refined proposals for land and river designations

# 1. PROPOSED LAND ACQUISITIONS



Photo from "PerilsofCaffeineintheEvening.com"

# Principles

- Allow economic uses\*
- Maintain and improve recreational access\*
- Fund restoration and management actions
- Consult with local landowners

\* *where consistent with protection of watershed and aquatic habitat*

# Preferred Acquisitions

- Teanaway Forest Land tract (AFLC)
- Little Naches, Manastash and Taneum and Headwaters lands intermingled with Forest Service lands
- Yakima River Canyon (Eaton Ranch)

*(Preferred acquisitions are the same as listed in the Integrated Plan)*

# Other Acquisition Options

- Plum Creek, AFLC and other private forest lands in Upper Yakima Basin
- Multiple tracts of private forest lands in Naches, Cowiche and Ahtanum Basins
- Two large tracts of shrub-steppe land
  - One in Cowiche Creek Basin
  - One in Lower Yakima River Basin



Herke Ranch : 3,332 acres

# Potential Shrub Steppe Conservation Lands





## 2. PROPOSED PROTECTIVE DESIGNATIONS



Cooper River



Bull Trout, Deep Ck.  
Photos by Jm Cummins

# Principles

- Actively consult with local landowners
- Enhance watershed and habitat protection
- Maintain or improve recreational access
- Allow economic uses where consistent with watershed and aquatic habitat protection
- Complement other actions in the Integrated Plan

# Proposed Designations on Public Lands

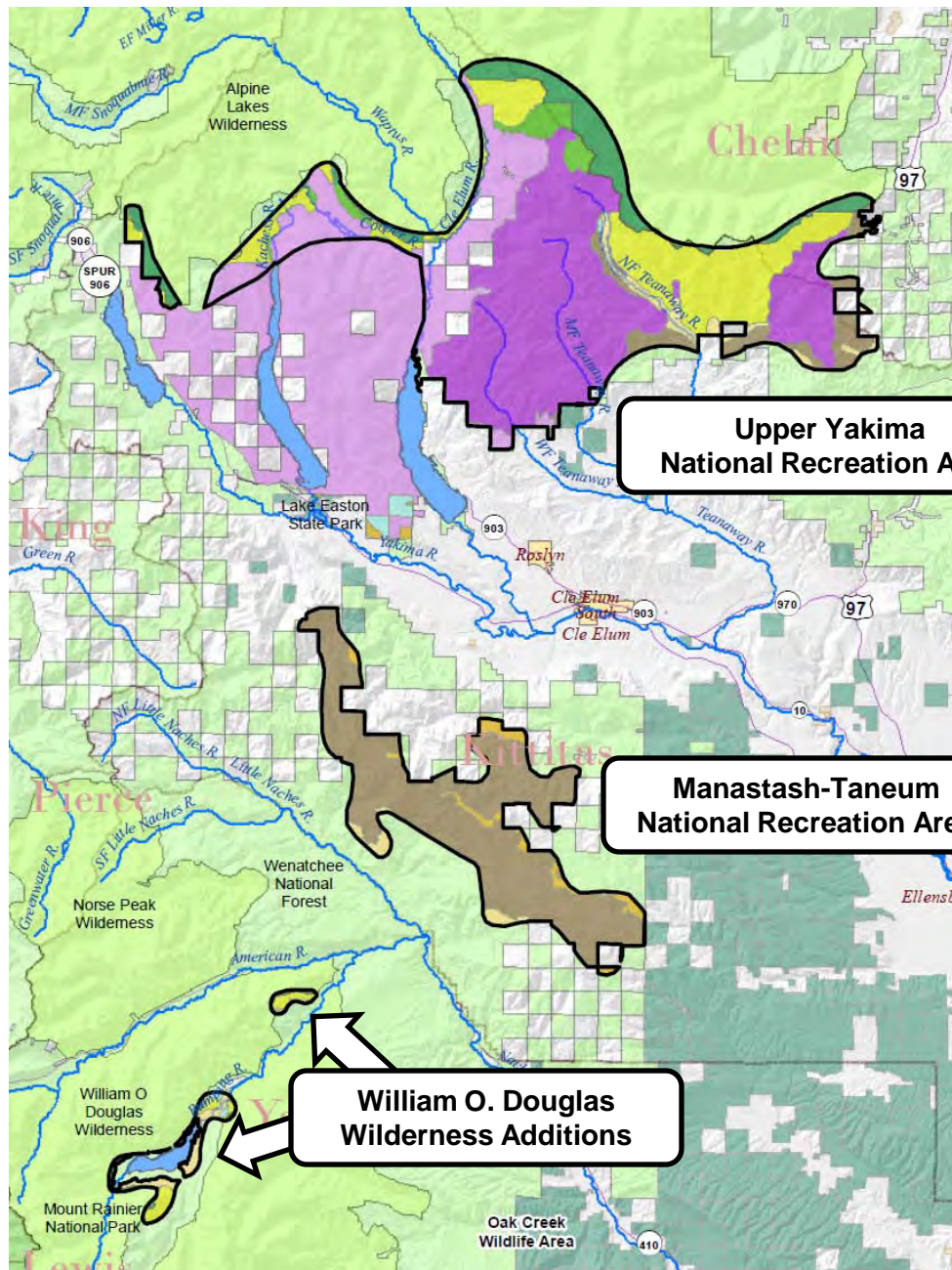
- National Recreation Area on federal lands in Teanaway
  - Out of roughly 100,000 acres, about 20,000 acres would be wilderness
- National Recreation Area on federal lands in Manastash-Taneum
  - Out of roughly 40,000 acres, 35,000 would be for backcountry motorized recreation
- Add about 1,500 acres to William O. Douglas Wilderness adjacent to Bumping Lake

# Why Recreational Areas?

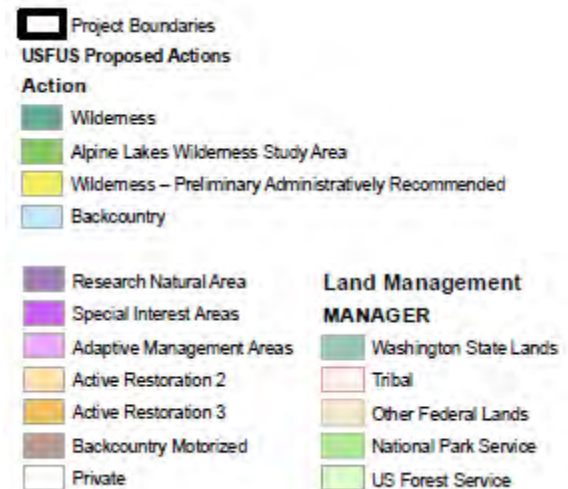
- Draws attention, visitation and funding while protecting core ecosystem values
- Supports local economy and generates public support
- Provides clear direction to Forest Service land managers
- Select, critical areas can receive special protection through wilderness designation in the Act establishing the NRA

*“There are presently 18 NRAs in the National Park System. 12 are centered on large reservoirs and emphasize water-based recreation. 5 other NRAs are located near major population centers and combine open spaces, preservation of historic resources, and important natural areas.”*

# Proposed Public Lands Designations



## LEGEND



Private lands are not intended to be included in National Recreation Area designation; any aberrations of mapping that appear to encompass private lands in NRAs are unintentional.



# What are Wild and Scenic Rivers?

- Designated by Congress based on “outstanding remarkable values” (e.g. fish habitat, scenic quality, recreation)
- Management plan determines what federal landowners can do on river corridor
- Agreements needed with local government and private landowners for non-federal lands

*This designation attracts attention, funding and recreational visitors*



# Principles

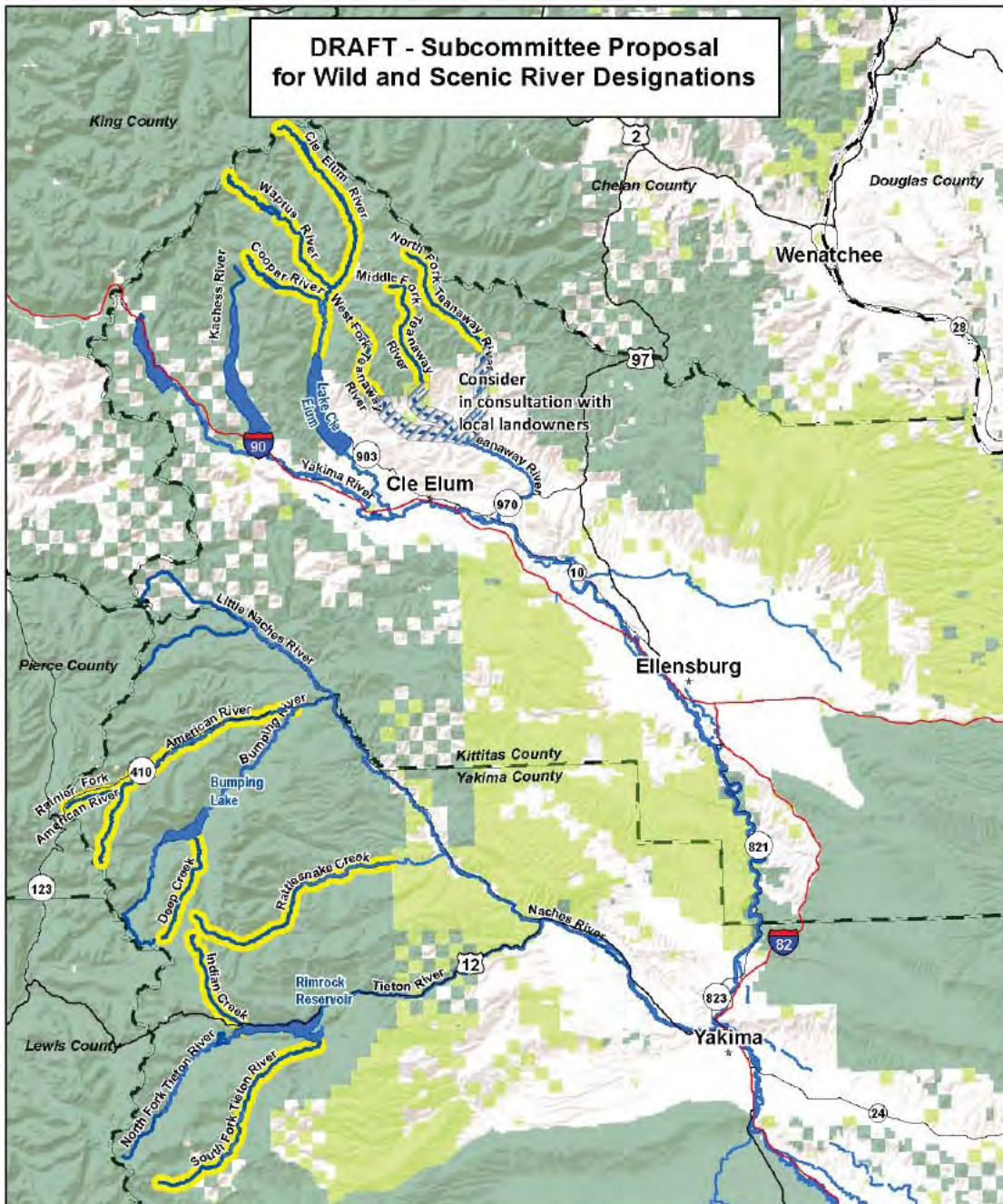
- Develop cooperatively with landowners and county government
- Complement other actions in the Integrated Plan

*\* where consistent with protection of watershed and aquatic habitat*

# Proposed River Designations

- In Upper Yakima Basin
  - Upper Cle Elum, Waptus, Cooper Rivers
  - Portions of Teanaway River and its tributaries
    - (on public lands and possibly some private lands)
- In Naches Basin
  - South Fork Tieton and Indian Creek (flowing into Rimrock Reservoir)
  - Rattlesnake Creek (flowing into Little Naches River)
  - American River and its Rainier Fork

**DRAFT - Subcommittee Proposal  
for Wild and Scenic River Designations**



# Proposed Wild & Scenic Rivers Designations

**Legend**

- Proposed Wild and Scenic Rivers
- State Lands
- Federal Lands

# **SUBCOMMITTEE MEMBER COMMENTS**

# **WORK GROUP QUESTIONS/DISCUSSION**