



Teanaway Community Forest – Activity Report



This River Runs Forever
Yakima Basin Integrated Plan

TCF Work
Accomplished





TEANAWAY COMMUNITY FOREST

PHOTOCONTEST & VOLUNTEER CELEBRATION

Celebrating a year of amazing Community Forest volunteers and announcing the winners of our first Photocontest!

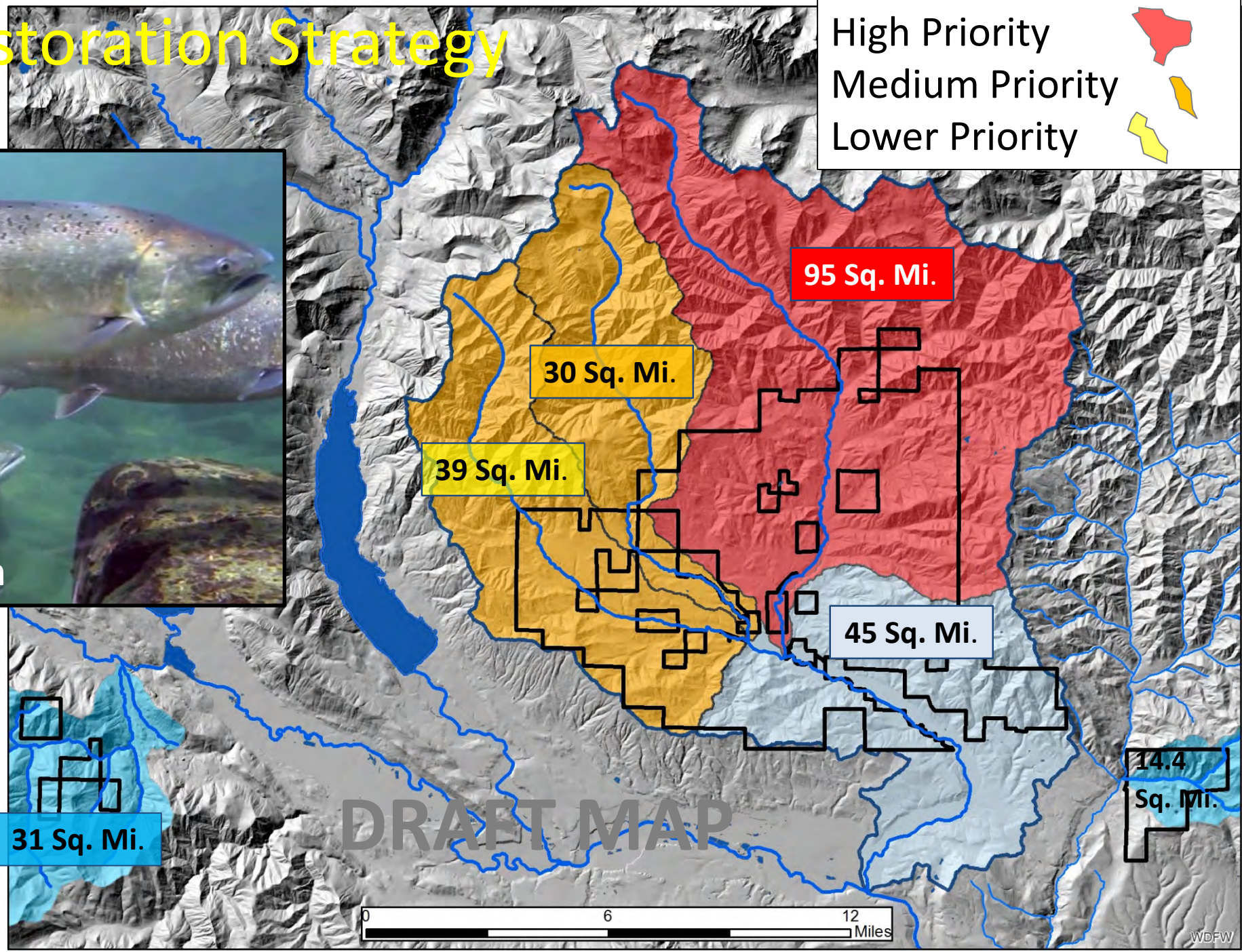
FEBRUARY 24, 1-3PM
AT THE PARLOUR CAR BISTRO

FREE TO ALL, SNACKS AND COFFEE PROVIDED

Volunteers and Outreach

- TCF Workday (Love Day) May 4th
- Invasive weed work day
- Fence lay down/raising event
- Targeted outreach for wood project
- Trout Unlimited & Mountains to Sound Greenway & More...

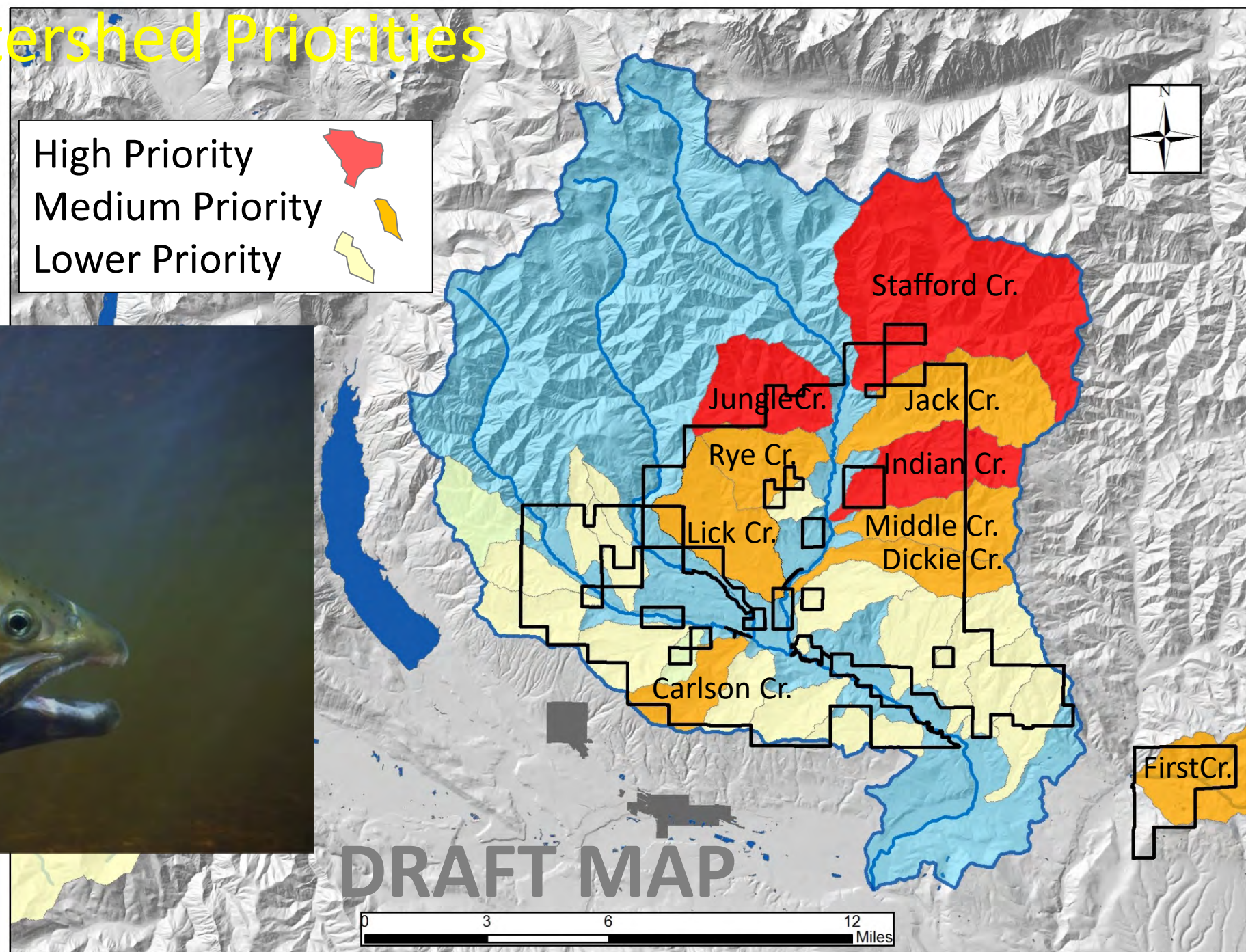
TCF Aquatic Restoration Strategy



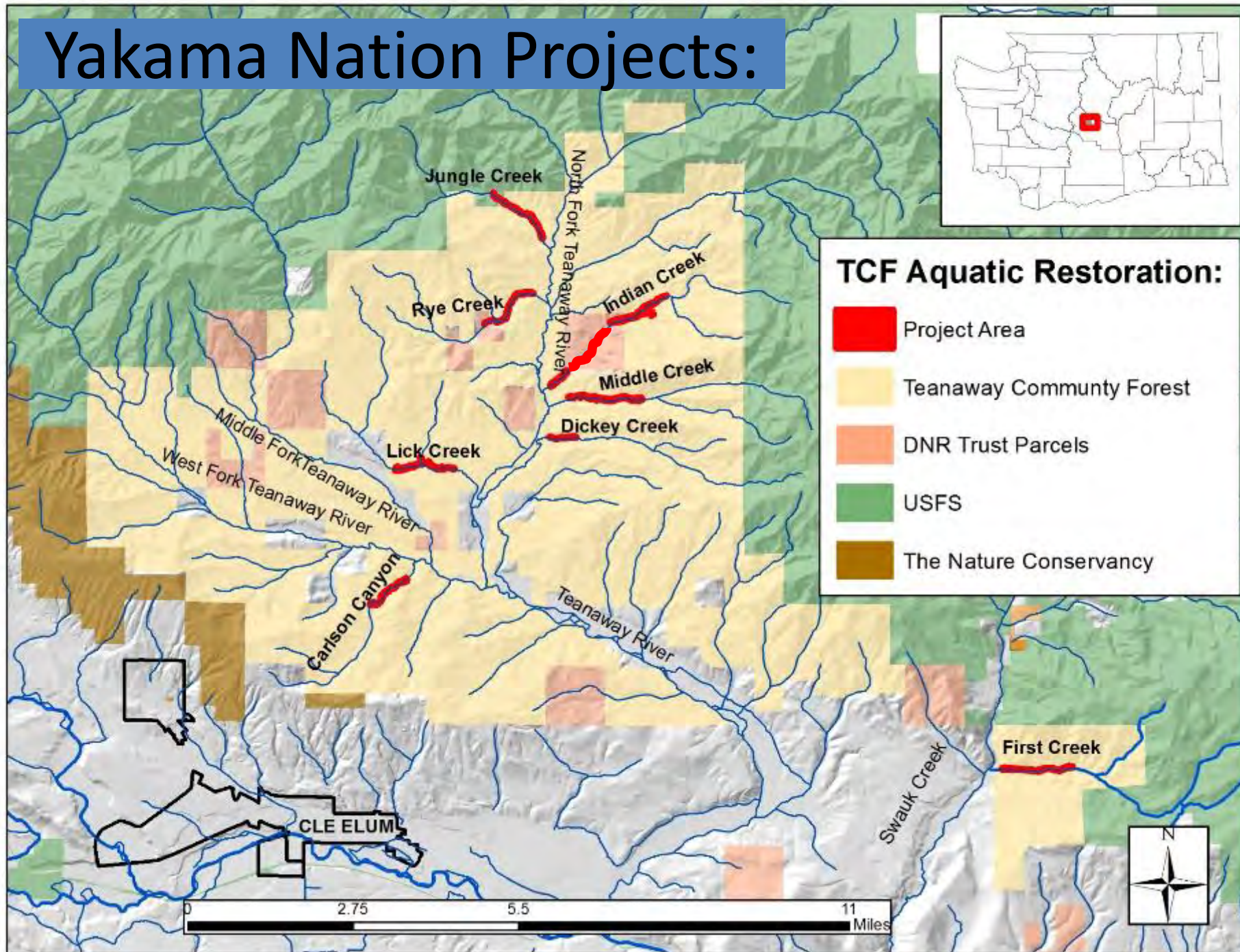
TCF Sub-Watershed Priorities



Steelhead



Yakama Nation Projects:



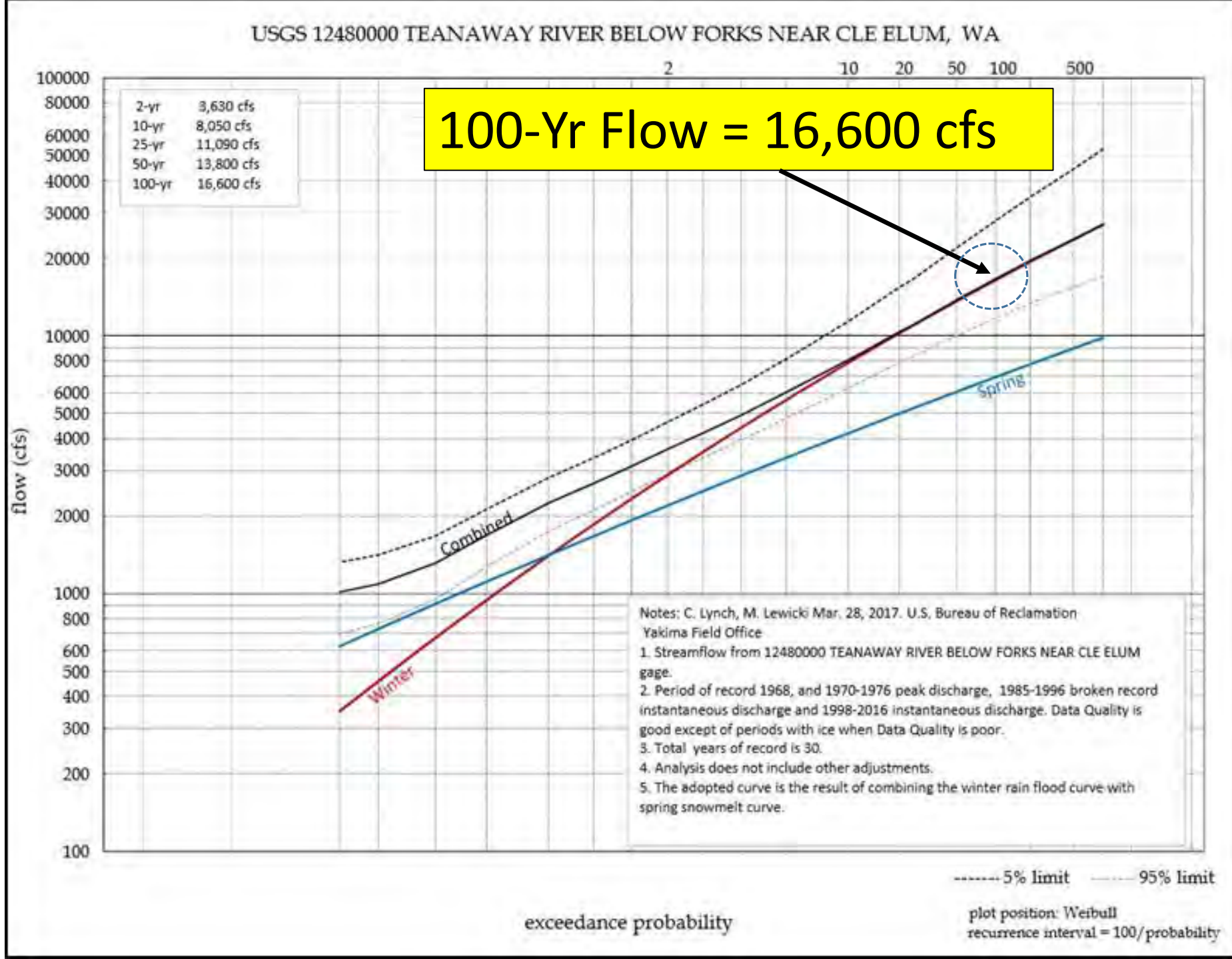
Tributary Work

Indian Creek

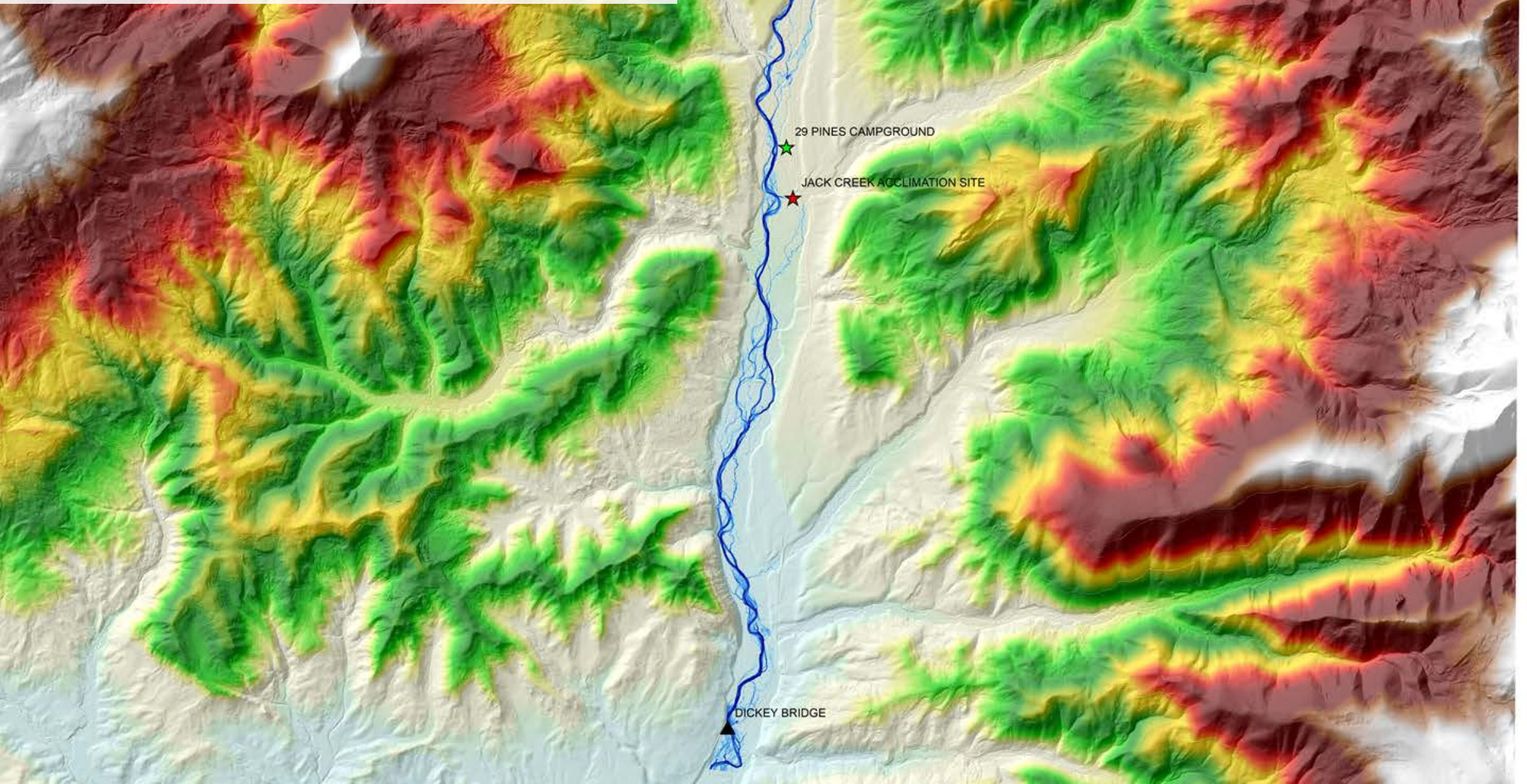


HYDROLOGY

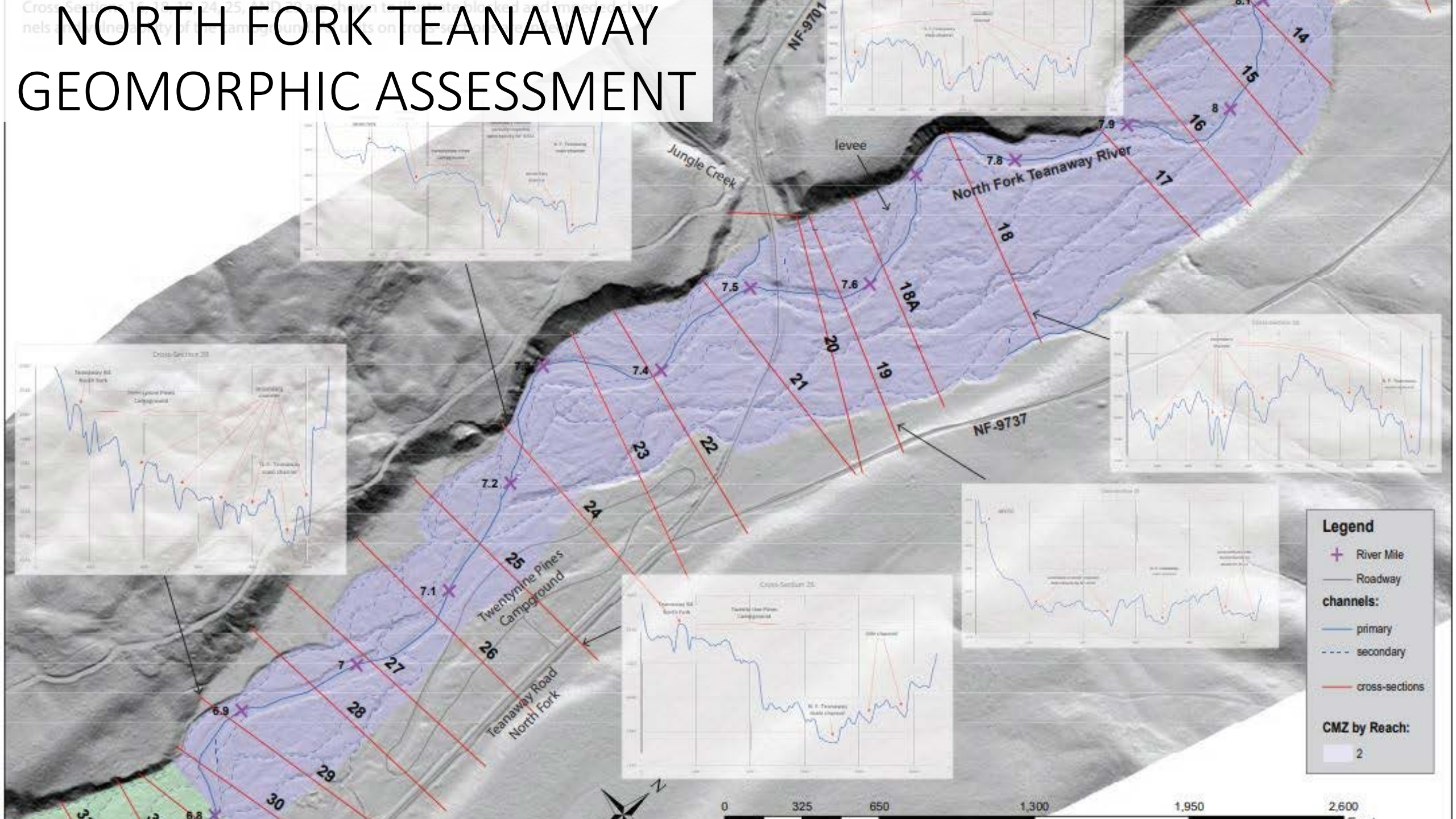
USBOR Gauge Analysis



LiDAR & 2D HYDRAULIC MODELING

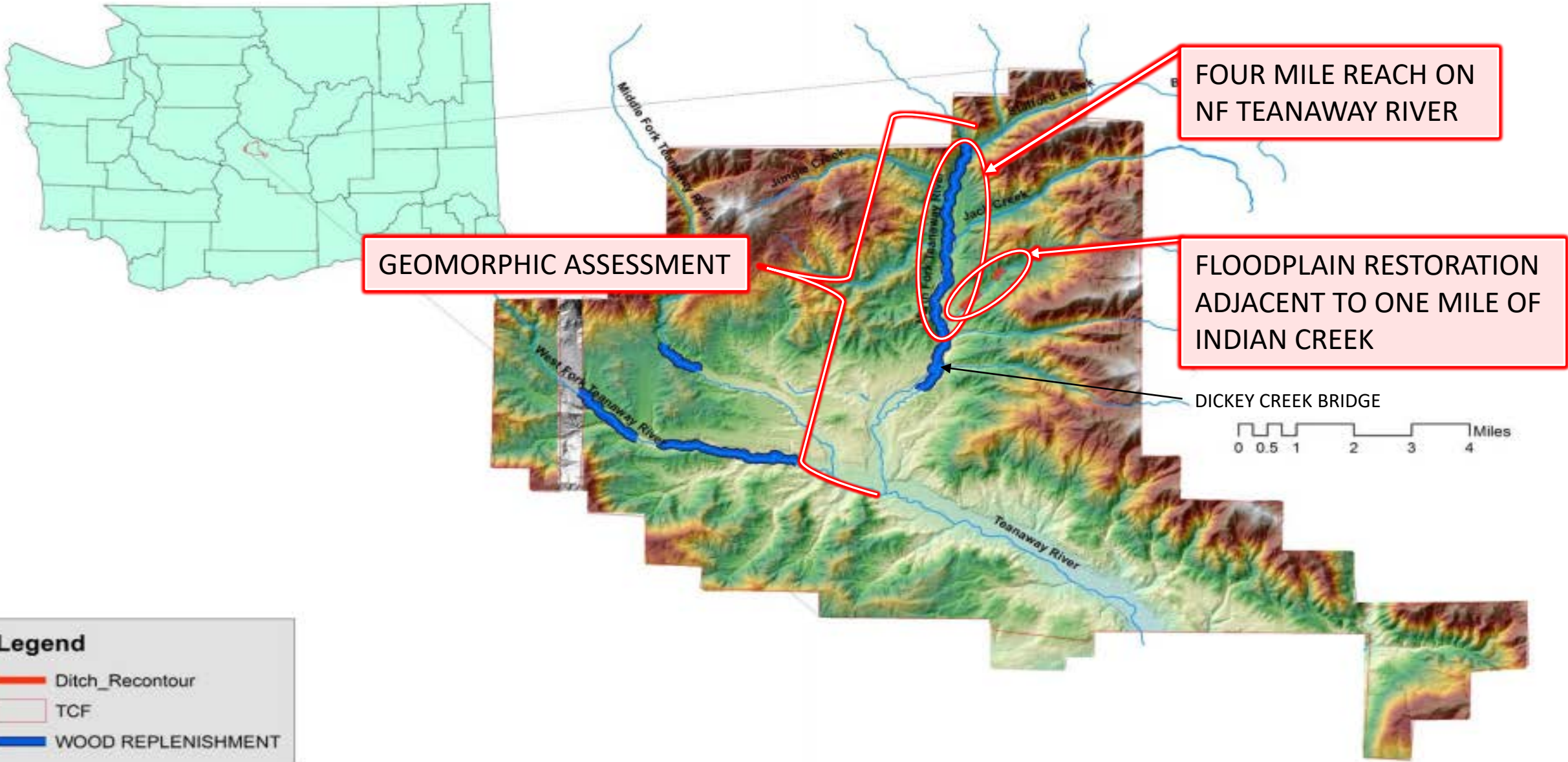


NORTH FORK TEANAWAY GEOMORPHIC ASSESSMENT



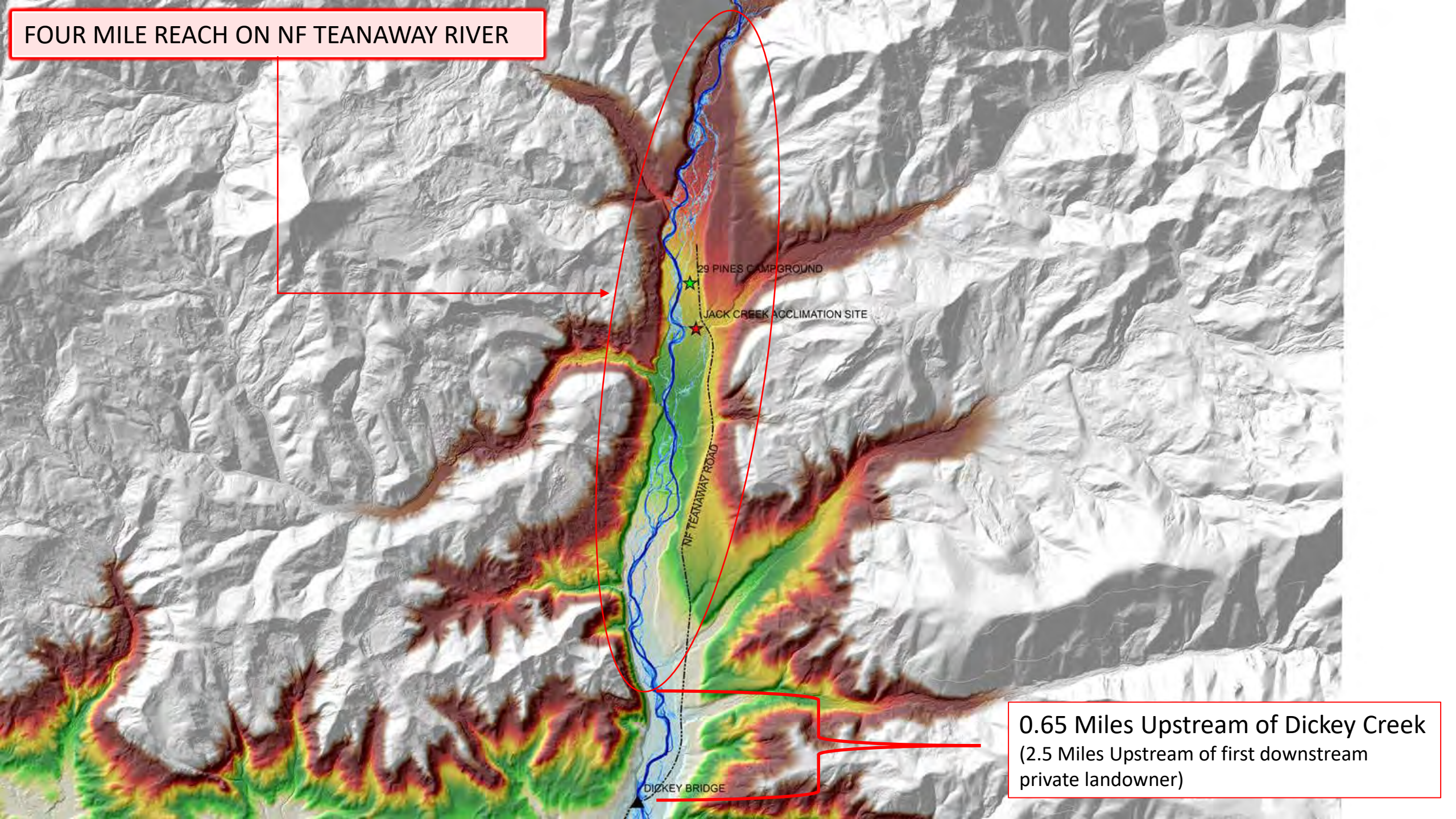
Legend

- ✕ River Mile
- Roadway
- channels:**
 - primary
 - - - secondary
- cross-sections
- CMZ by Reach:**
 - 2



TCF Floodplain Restoration Vicinity Map

FOUR MILE REACH ON NF TEANAWAY RIVER



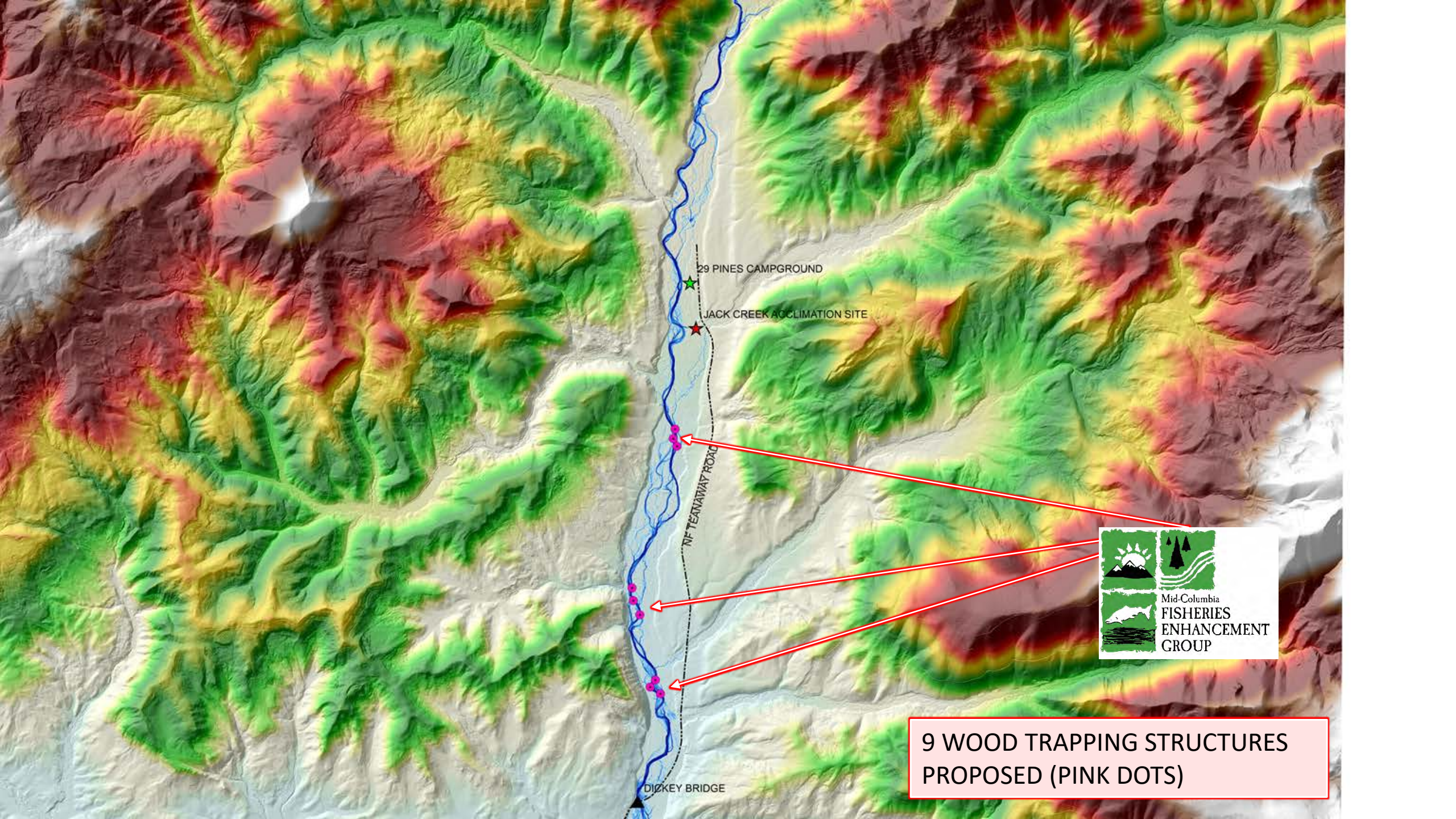
29 PINES CAMPGROUND

JACK CREEK ACCLIMATION SITE

NF TEANAWAY ROAD

DICKEY BRIDGE

0.65 Miles Upstream of Dickey Creek
(2.5 Miles Upstream of first downstream
private landowner)



29 PINES CAMPGROUND

JACK CREEK ACCLIMATION SITE

NF TEANAWAY ROAD

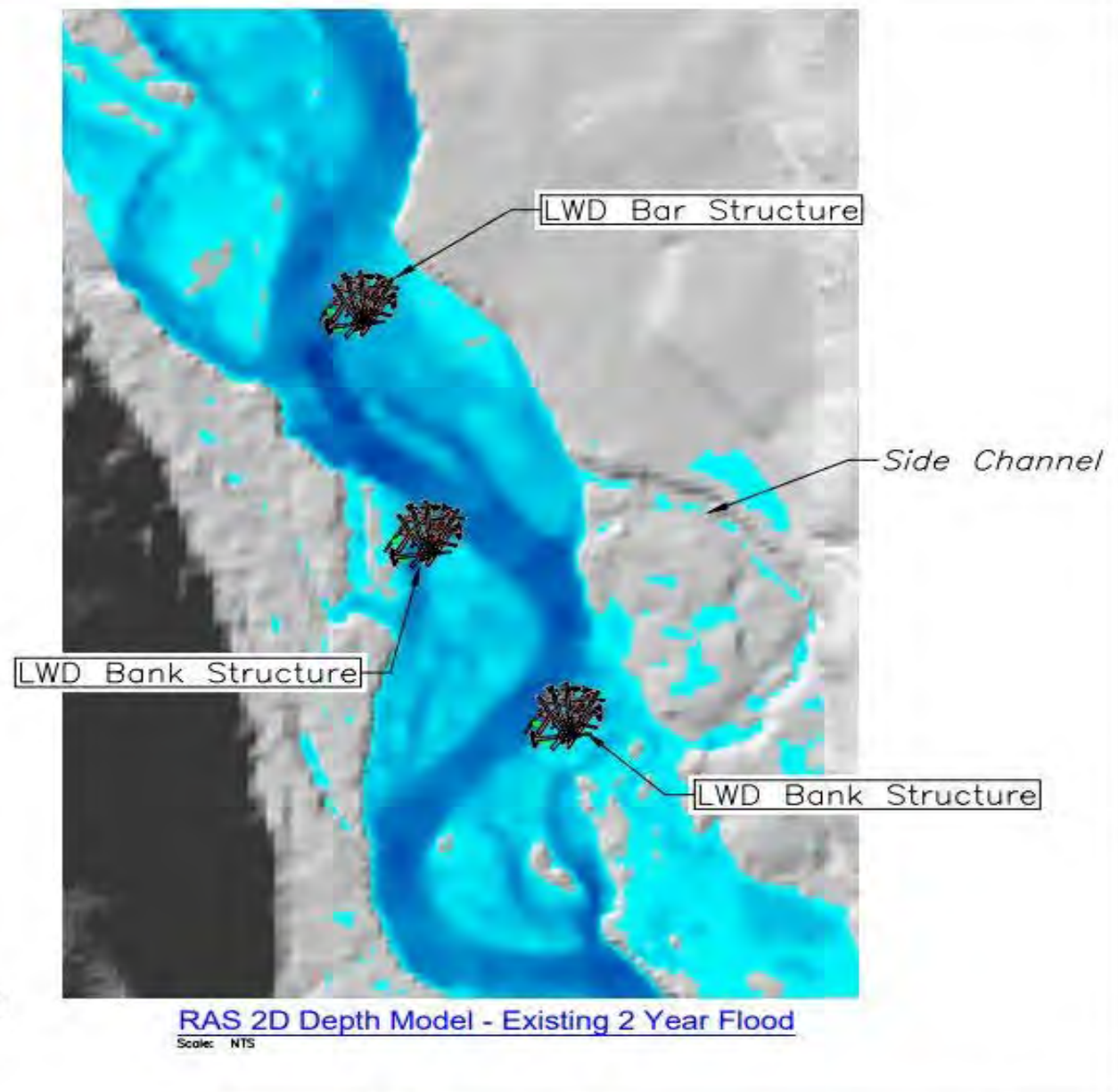
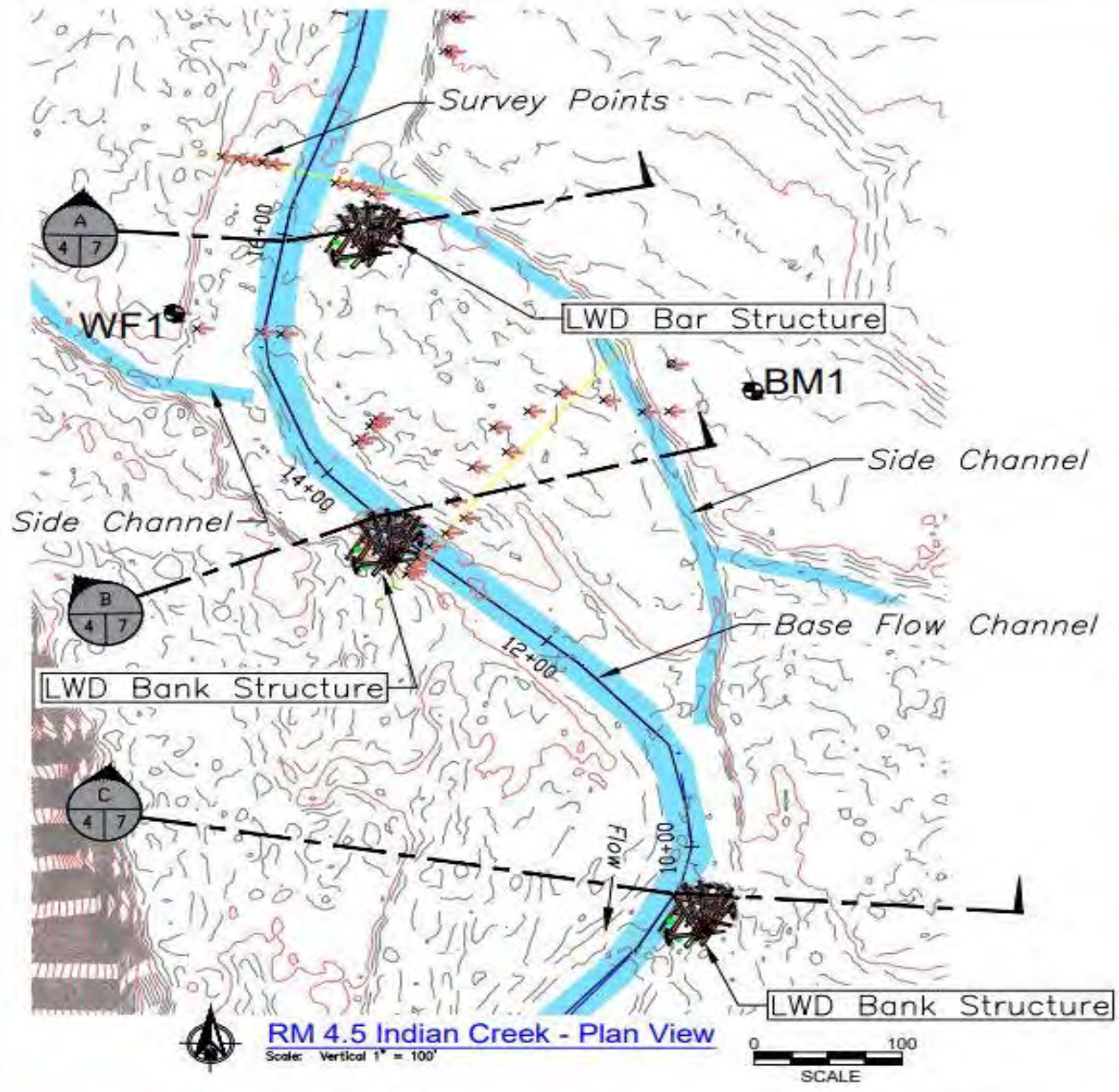
DICKY BRIDGE



9 WOOD TRAPPING STRUCTURES PROPOSED (PINK DOTS)



Washougal River



North Fork Teanaway LWD Trapping

REV	DATE	BY	APPD	DESCRIPTION

SCALE VERIFICATION

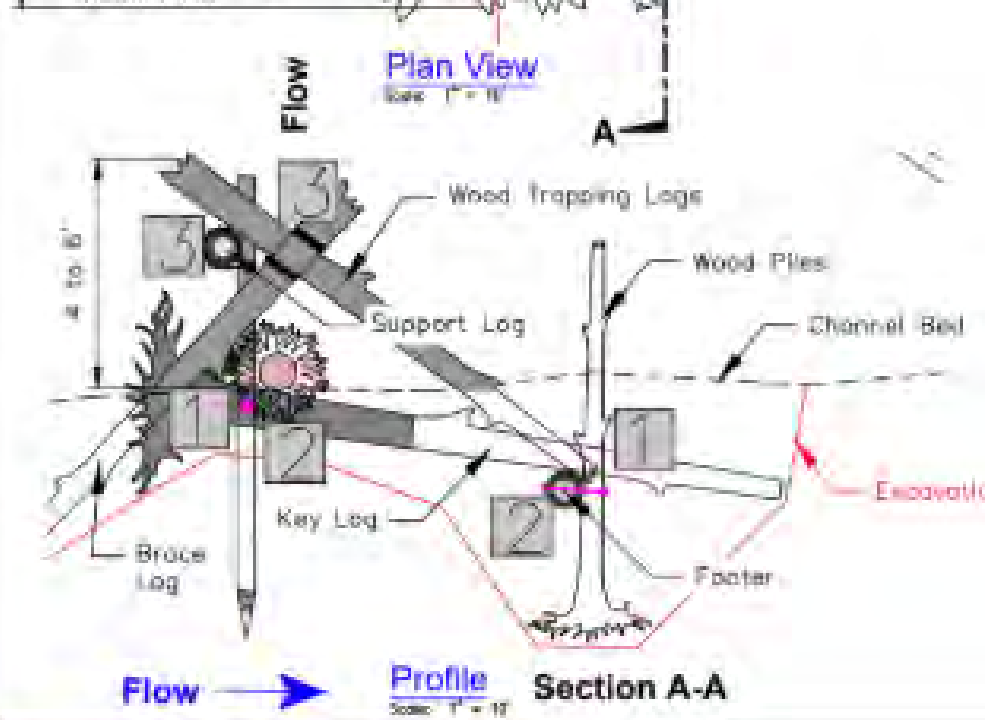
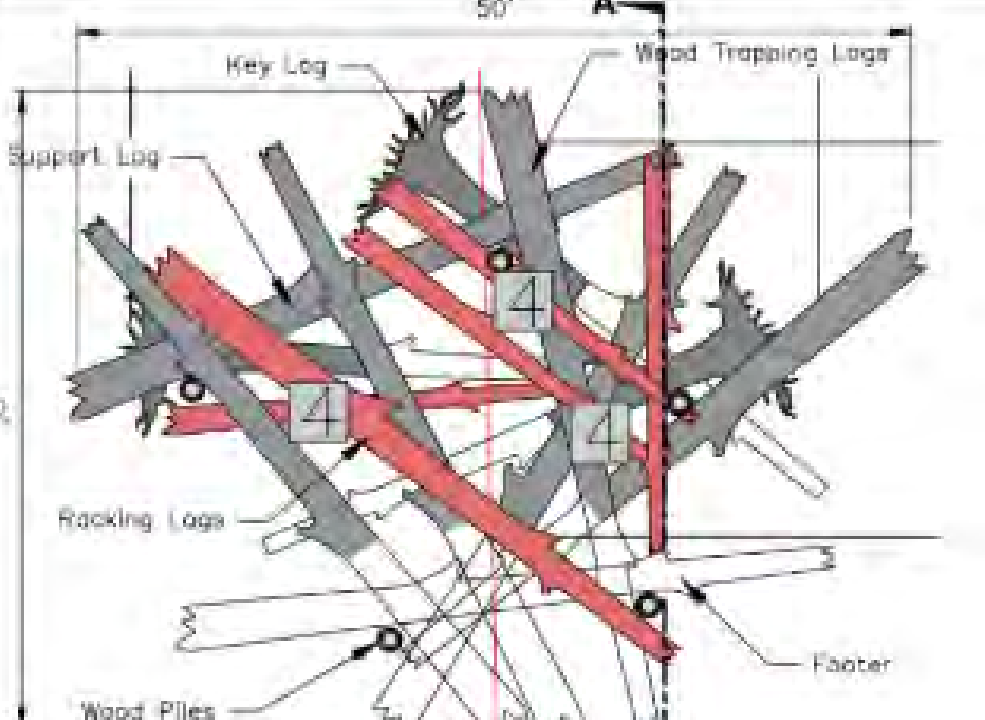
IF NOT ONE INCH ON THIS SHEET, ADJUST SCALES ACCORDINGLY.

DESIGN BY:
Waterfall Engineering

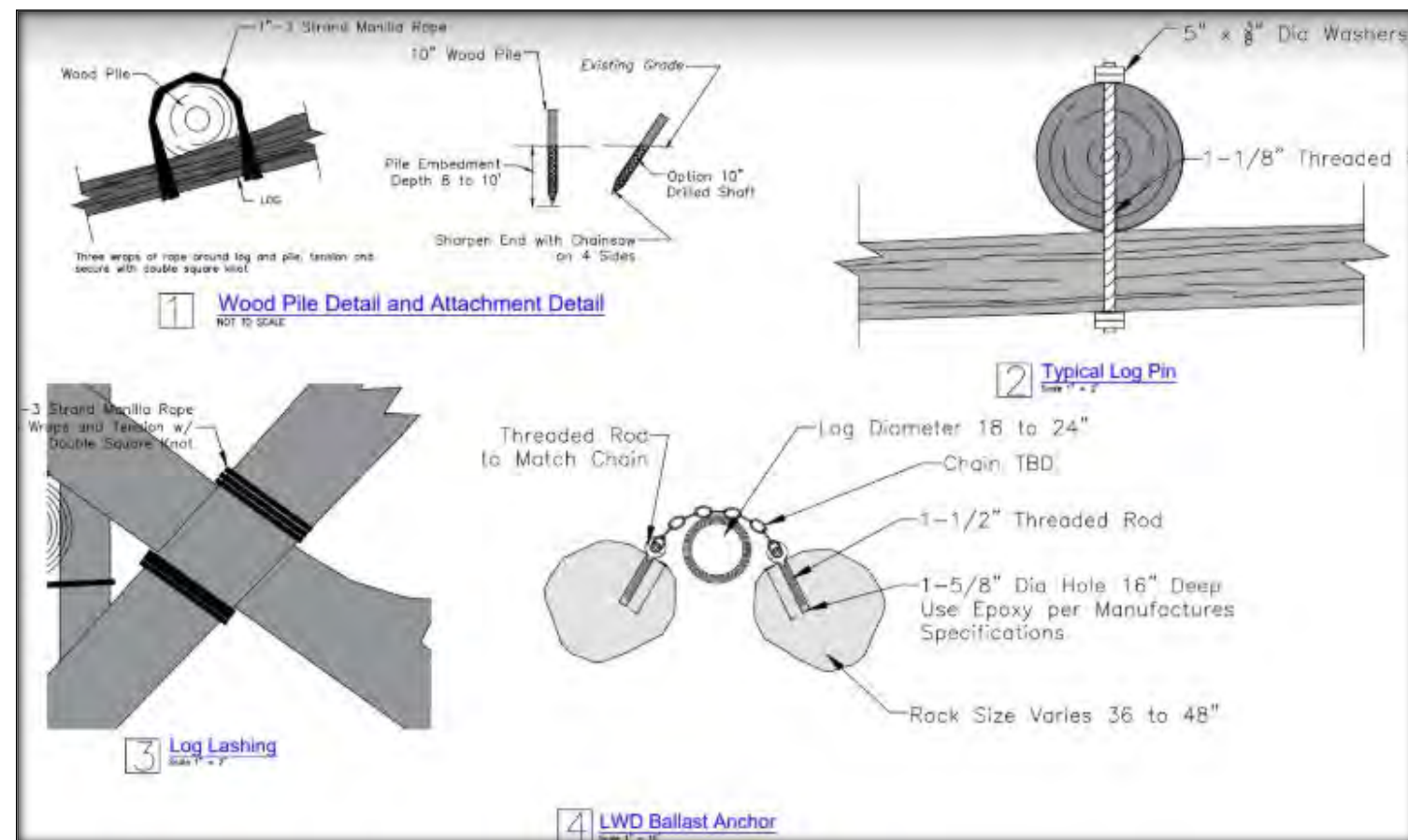
DRAWN BY:

DATE:
2/13/2019

RM 4.5 Indian Creek



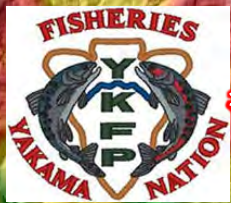
Wood Trapping Structures





Washougal River

33 WOOD STATIC
STRUCTURES PROPOSED
(GREEN DOTS)



29 PINES CAMPGROUND

JACK CREEK ACCLIMATION SITE

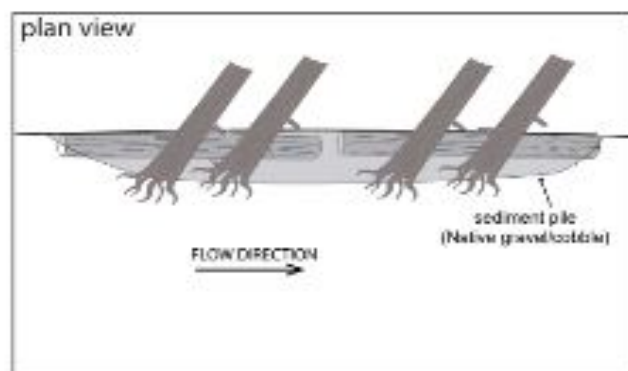
NF TEANAWAY ROAD

DICKEY BRIDGE

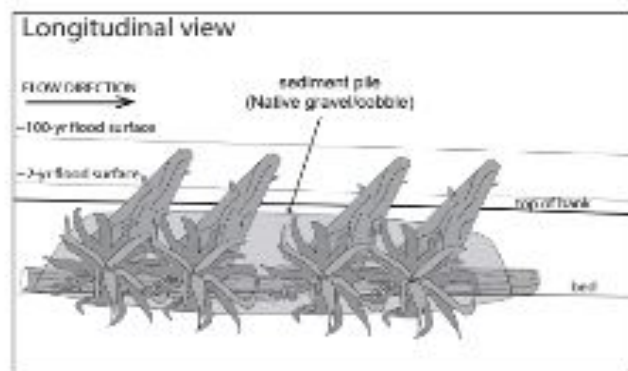
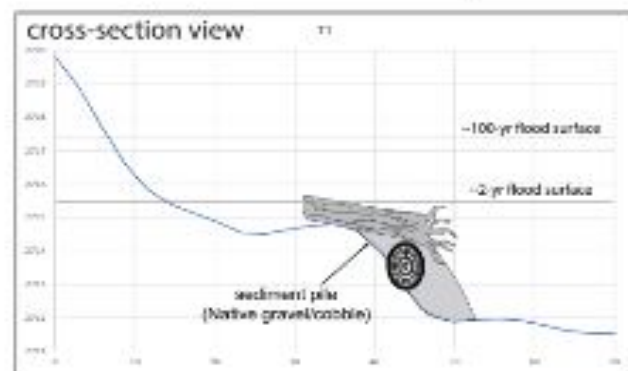


9 WOOD TRAPPING STRUCTURES
PROPOSED (PINK DOTS)

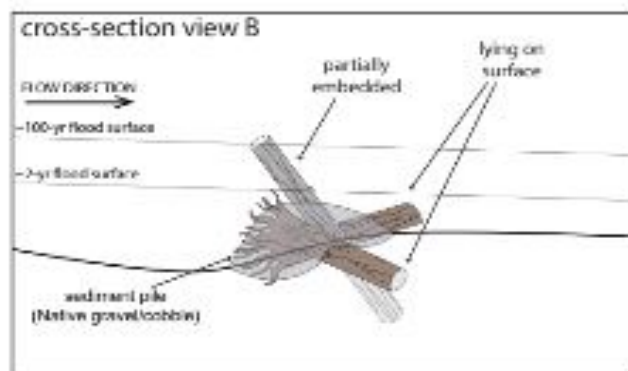
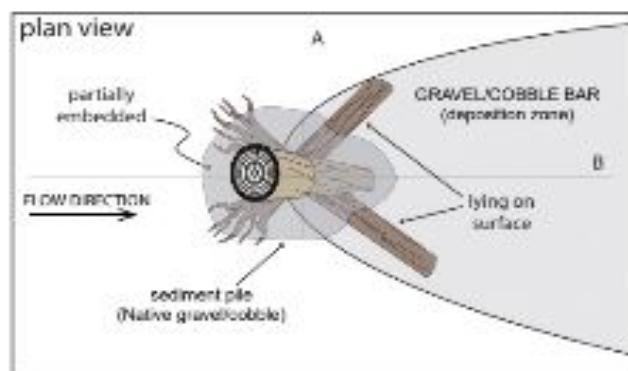
**TYPE 1 LOGJAM TYPICAL
(FLOW DEFLECTOR)**



DRAWINGS ARE NOT TO SCALE



**TYPE 2 LOGJAM TYPICAL
(FLOW SPLITTER)**



GENERAL INSTRUCTIONS:

FLOW DEFLECTOR:

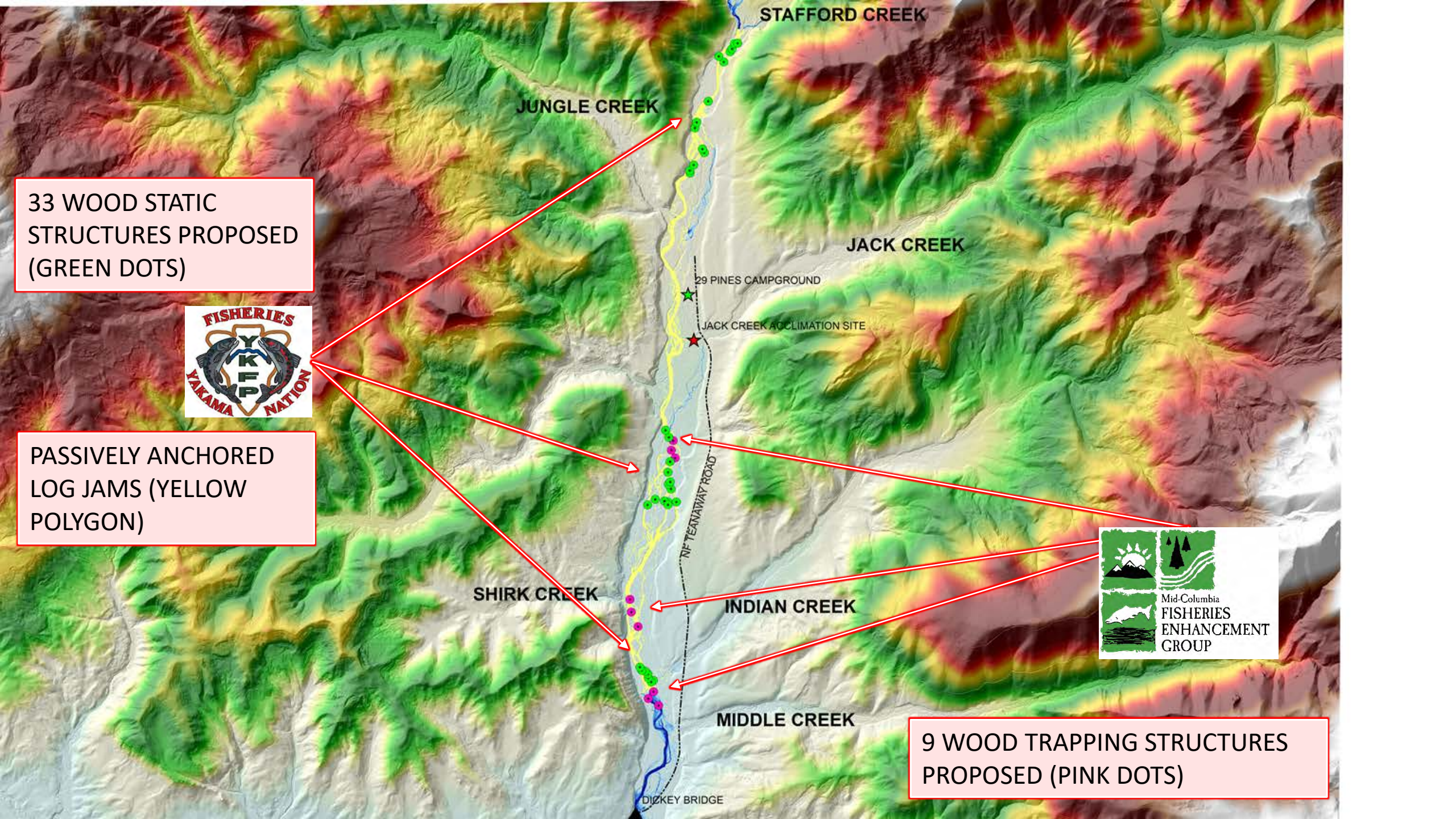
- 1) MINIMIZE EARTH-MOVING IN ALL CASES.
- 2) ALL EXCAVATION WILL BE DONE UNDER THE SUPERVISION OF SITE SUPERVISOR AS DESIGNATED BY YAKAMA NATION.
- 3) PRESERVE TOPSOIL AND REPLACE ON DISTURBED, OR BARE SURFACES AFTER CONSTRUCTION IS COMPLETED.
- 4) PLACE LOGS AGAINST THE STREAM BANK.
- 5) IF EXCAVATION IS NEEDED, EXCAVATE SLOT TO PLACE TOP LAYER OF WOOD.
- 6) PLACE SLASH AND SEDIMENT FROM SPLASH DAM AS TO FILL EMPTY SPACES. PLACE ADDITIONAL SEDIMENT FROM SPLASH DAM AS DIRECTED BY FIELD SUPERVISOR.

- 7) REPLACE SIDE CASTED TOPSOIL ON DISTURBED SURFACES.

FLOW SPLITTER:

- 1) EXCAVATE A TRENCH TO PLACE "KEY" LOG SLOPING DOWNSTREAM AT A 1:1-2:1 SLOPE.
- 2) PLACE "KEY" LOG AT 30°-45° ANGLE UPSTREAM
- 3) REPLACE EXCAVATED MATERIAL AND COMPACT TO SECURE "KEY" LOG.
- 4) PLACE "SWEEPER" LOGS AS DIRECTED BY FIELD SUPERVISOR. ORIENTATION, SIZE, AND FIT WILL BE FIELD FITTED BASED ON MATERIALS AND LOCAL CHANNEL GEOMETRY. INTERLOCK ROOTWADS.
- 5) PLACE SEDIMENT PILE AS DIRECTED BY FIELD SUPERVISOR.





33 WOOD STATIC STRUCTURES PROPOSED (GREEN DOTS)



PASSIVELY ANCHORED LOG JAMS (YELLOW POLYGON)

9 WOOD TRAPPING STRUCTURES PROPOSED (PINK DOTS)

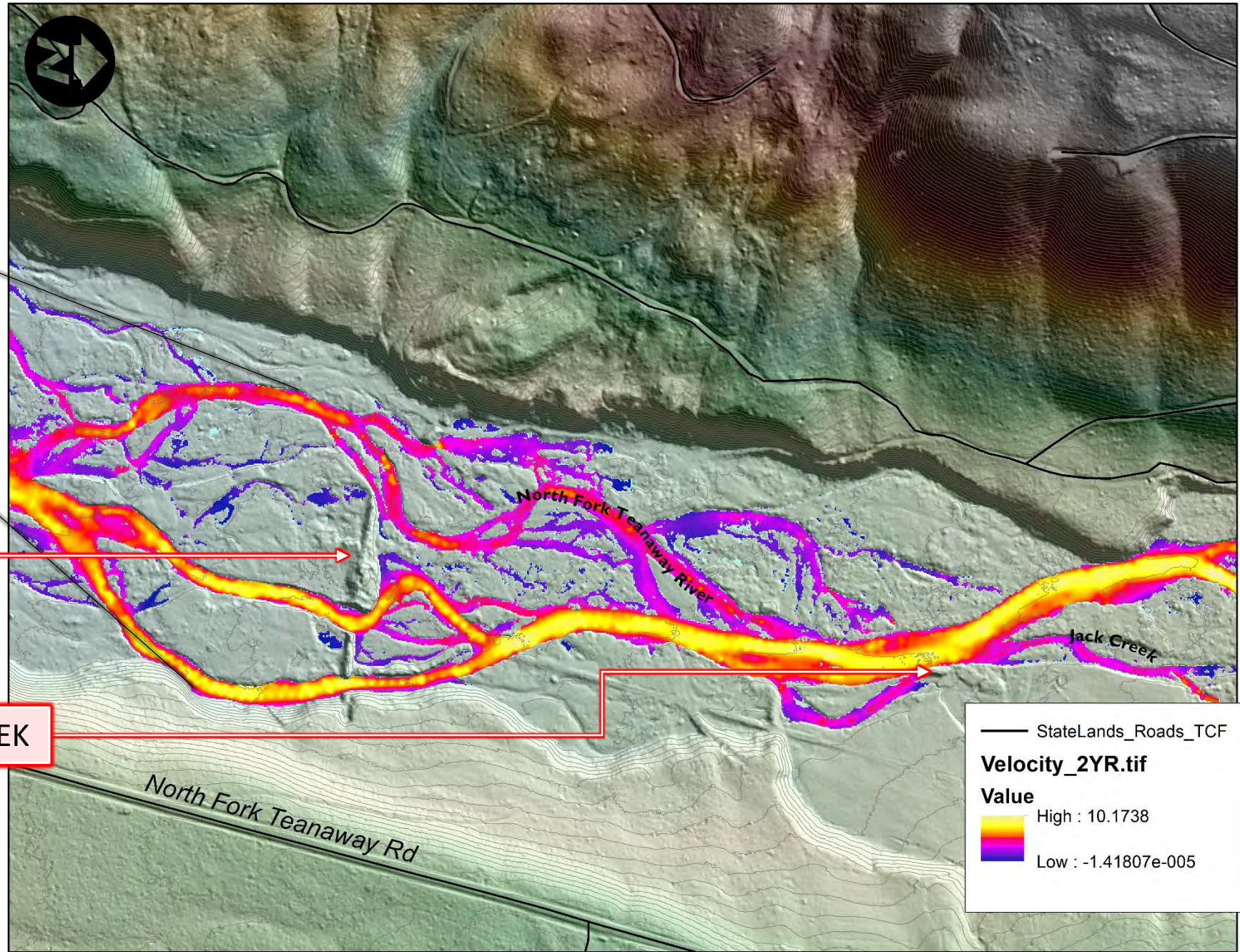
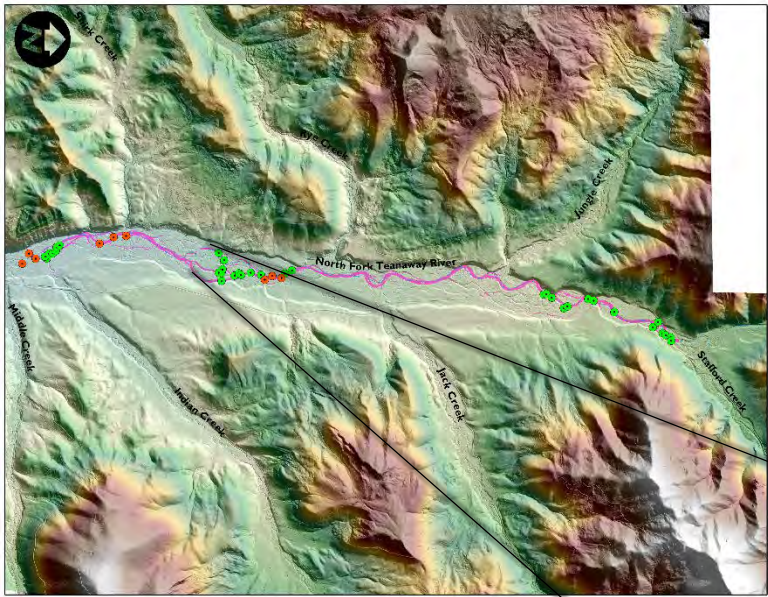




Place wood example: Little Naches River
- Logs Placed with Helicopter 2018

Placed wood example: Lower Swauk Creek
- Logs Placed with Helicopter 2018





~~SPLASH DAM AND LEVEE AT JACK CREEK~~

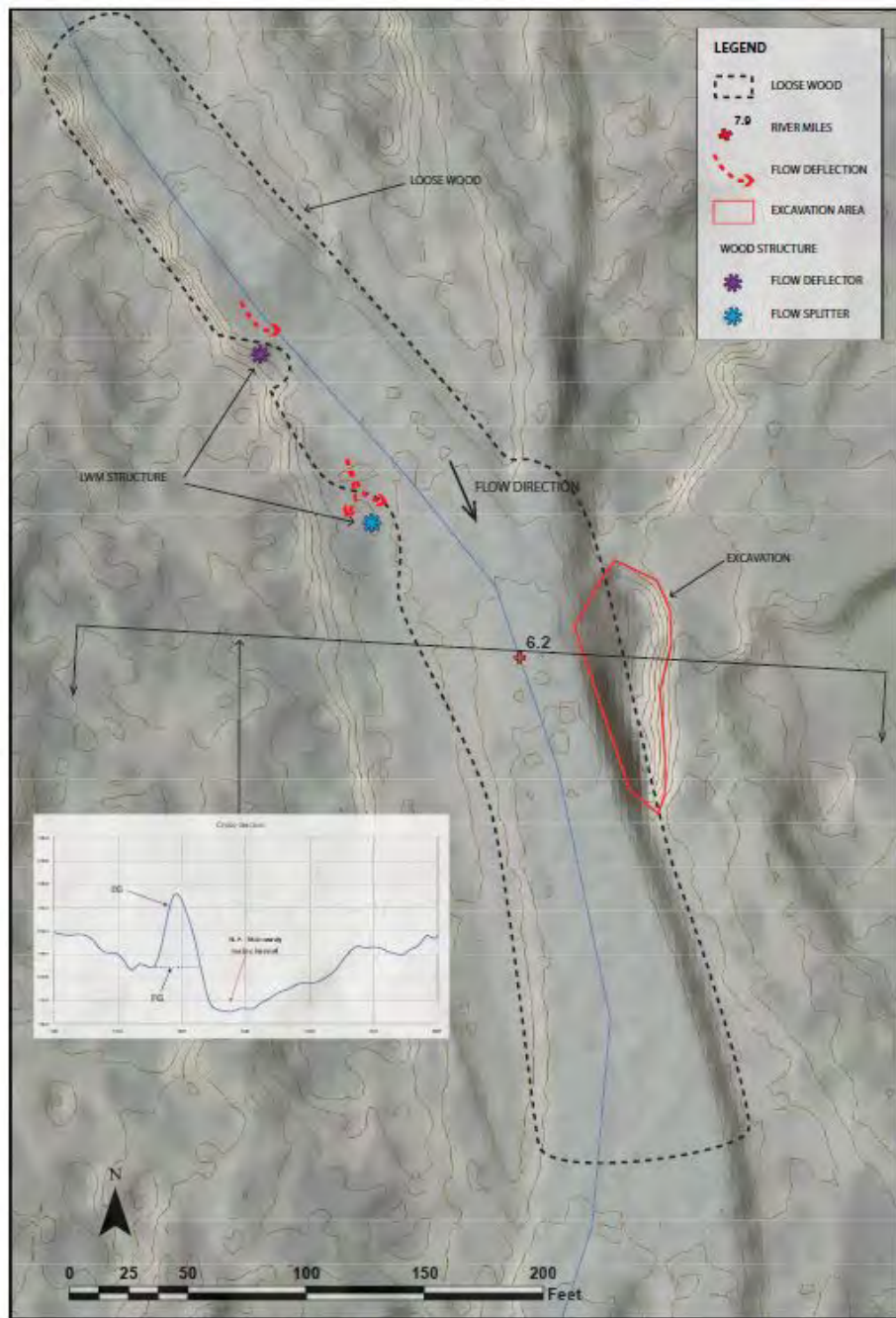
— StateLands_Roads_TCF

Velocity_2YR.tif

Value

High : 10.1738

Low : -1.41807e-005

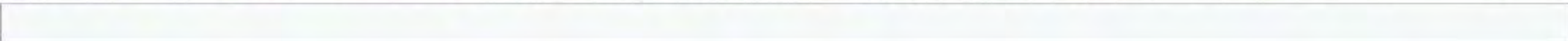


Jack Creek Confluence Area



NF Teanaway River:
Proposed Log Jam Sites
2019 & 2020
YKFP & MCF

INDIAN CREEK:
Hydrologic Impediment
RR Grade then abandoned
DNR road

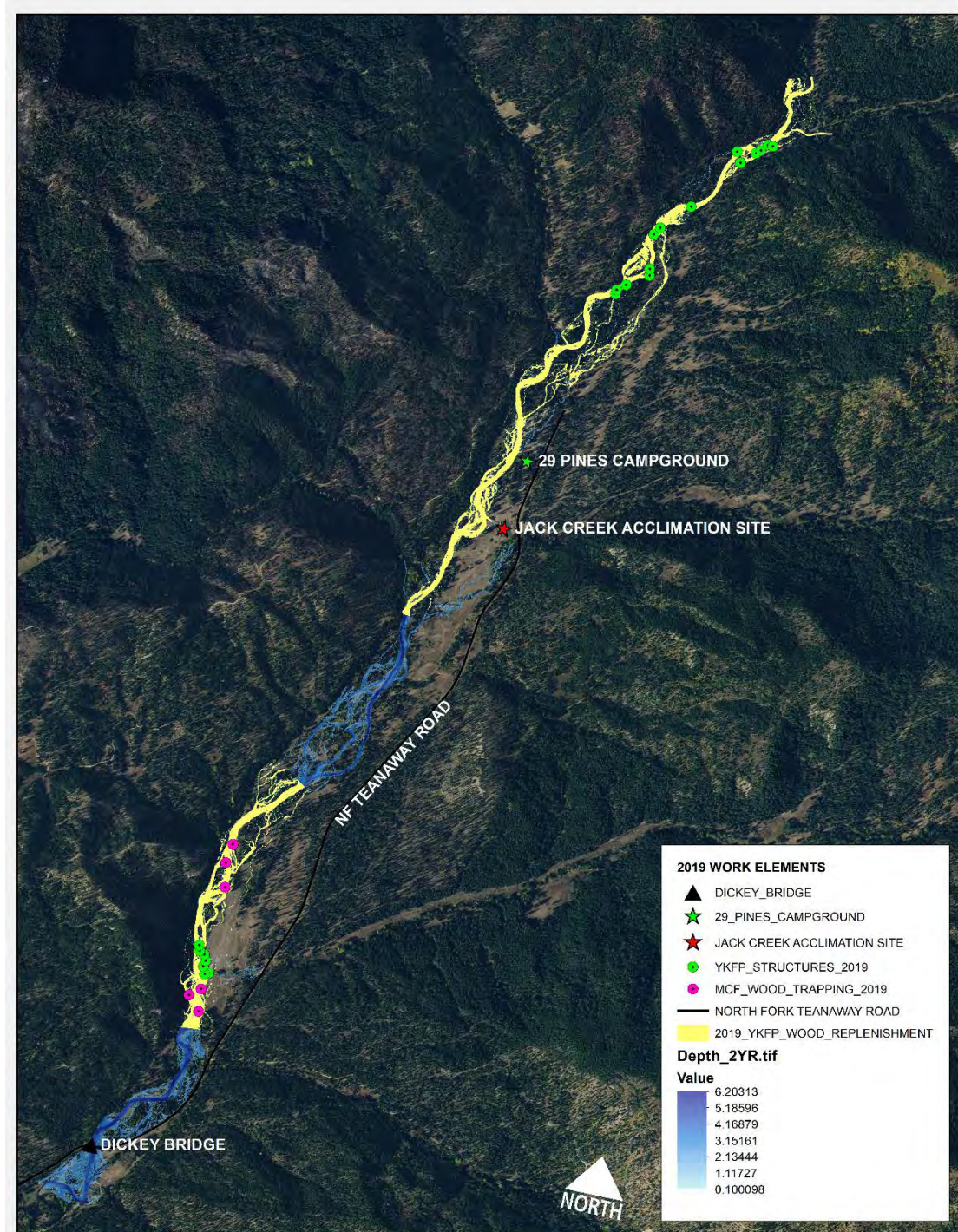


00:00.00



Implementation Timing

- Summer 2019
 - Mid Columbia Fisheries Structures below Splash Dam
 - Yakama Nation structures above and below splash dam reach.
 - Wood replenishment upstream and downstream of splash dam



Implementation Timing

- Summer 2020
 - Mid Columbia Fisheries structures at splash dam
 - Yakama Nation structures at splash dam.
 - Wood replenishment at splash dam
 - Splash dam removal.
 - Indian Creek floodplain recontour

