

Yakima Basin Integrated Plan – Toppenish to Teanaway Project

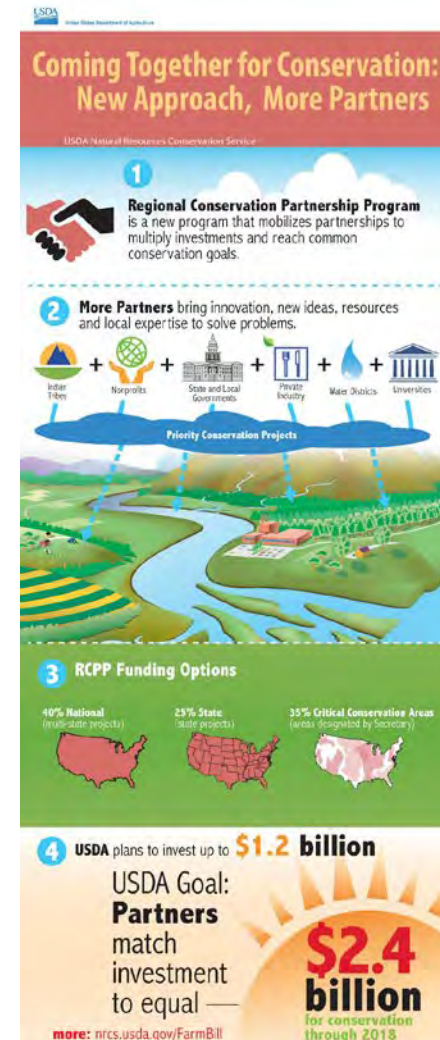
FY 2018 Report

by Kittitas County Conservation District

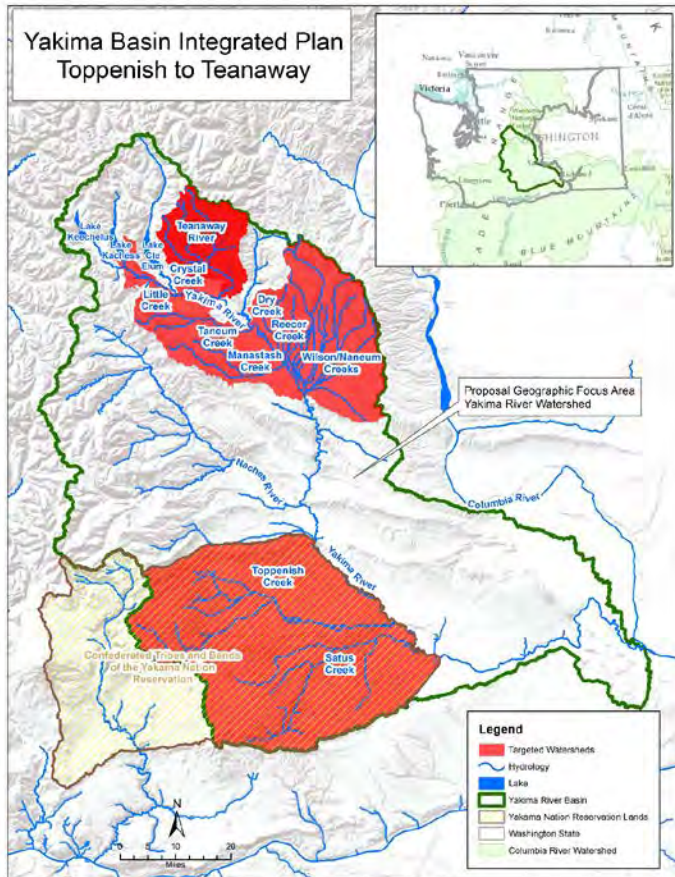


Regional Conservation Partners Program (RCPP)

- The Regional Conservation Partnership Program (RCPP) encourages partners to join in efforts with producers to increase the restoration and sustainable use of soil, water, wildlife and related natural resources on regional or watershed scales.
 - NRCS implements RCPP through four existing programs:
 - [Agricultural Conservation Easement Program \(ACEP\)](#)
 - [Environmental Quality Incentives Program \(EQIP\)](#)
 - [Conservation Stewardship Program \(CSP\)](#)
 - [Healthy Forests Reserve Program \(HFRP\)](#)
 - Connects partners with private landowners to design and implement voluntary conservation.



YBIP – Toppenish to Teanaway Project



- Resource Concerns
 - Inadequate Fish & Wildlife Habitat
 - Insufficient Water
 - Water Quality Degradation
- Geographic Scope
 - Satus and Toppenish Creeks
 - Kittitas irrigated lands and Teanaway Community Forest
- Funding - \$7.54 million
 - \$304,165 NRCS TA for Partner Use
 - \$669,742 NRCS TA for NRCS Use
 - \$6,566,833 NRCS FA for project
 - Contributions of \$7.58 million
- Timeline
 - December 2016 – Award Announced by NRCS
 - September 2017-Agreement with Yakama Nation
 - November 2017 – First RCPP sign-up in Kittitas County

RCPP Environmental Quality Incentives Program (EQIP)

- Screening & Ranking Criteria
 - Focused on resource concerns
- Sign-up advertised in October 2017
- Applications due November 17
 - Twenty three applications received



RCPP EQIP FY 2018

- Eight funded applications (7 contracts for \$769,069)
 - Sprinklers – 422 Acres
 - Pipeline - 21,325 feet
 - Pump Stations – 6
 - Fish Screen – 1
 - IWM – 308 Acres
- Producers
 - 1 Beginning Farmer
 - 3 Producers with no previous EQIP Contracts



Related Projects Implemented/Contracted FY 18

Planned Conservation Practice	Units	RCP Amount	Contribution Amounts	Big Bend LWG	Total
Sprinkler System	Acres	422	179	344	945
Irrigation Water Management	Acres	403		411	814
Irrigation Pipeline	Feet	21,325	5,260	14,525	41,110
Pumping Plant	No.	6	5	6	17
Structure for Water Control	No.	3		2	5
Fish Screen	No.	1	2		3
Fence	Feet			1,070	1,070
Livestock Pipeline	Feet			4,225	4,225
Watering Facility	No.			4	4
Prescribed Grazing	Acres			47	47
Tree/Shrub Establishment	Acres			0.7	0.7
Fish Passage	No.		3		3

RCPP Agricultural Conservation Easement Program (ACEP)

- ACEP
 - Agricultural Land Easement (ALE) – 160 acres
 - Wetland Reserve Easements (WRE) – 2 acres
- ACEP – ALE Sign-up
 - Eligibility to Apply
 - Entity Holding Easement
 - Applications due July 2018
 - One application received



Contributions

- Administration, Outreach and Monitoring
 - \$179,622 (Conservation Commission, Department of Ecology, KCCD)
- Technical Assistance
 - \$676,023 (YTAHP-BPA, Ecology (KCCD), Ecology (KRD), Conservation Commission)
- Financial Assistance
 - \$570,478 (YTAHP-BPA, Ecology (KCCD), Ecology (KRD), Washington State Conservation Commission, Kittitas Co Public Works)
 - \$1,183,280 (Ecology (Kittitas County), and Kittitas Co Public Works)

\$2.6 million

Annual Report

- Available on the KCCD Website

www.kccd.net/rcpp.htm

