

Yakima Basin Integrated Plan Technical Projects Update

Yakima, WA
December 19, 2018



Presented by:

Richard Visser, CEFP Project Manager



Cle Elum Pool Raise Project

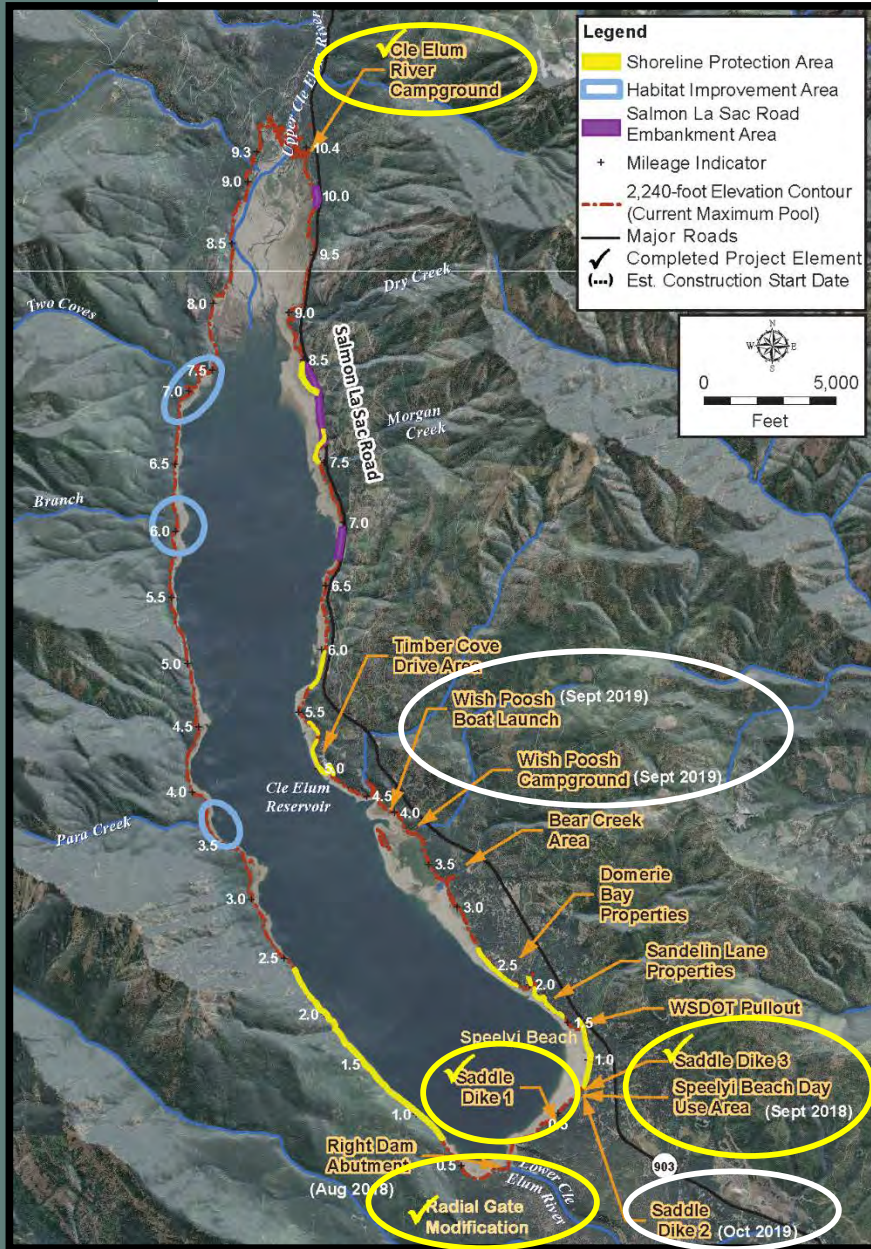
Structural and Operational Changes



Cle Elum Pool Raise

14,600 acre-feet for Yakima River instream flows

- Modify radial gates
- Shoreline protection
- Land acquisition



Cle Elum Dam Pool Raise Radial Gates Complete – April 2017



Cle Elum Reservoir Shoreline Protection



Pre-Construction



Post-Construction Nov 2017



Re-planted
Sept 2018

Cle Elum Reservoir Shoreline Protection



Speelyi Day Use Area New Construction, not to scale



Cle Elum Reservoir Shoreline Protection



Speelyi Day Use
Area Construction



Pre-construction stake out/site visit, September 2018



Cle Elum Reservoir Shoreline Protection



Speelyi Day Use
Area Construction



Chain and channel tie down

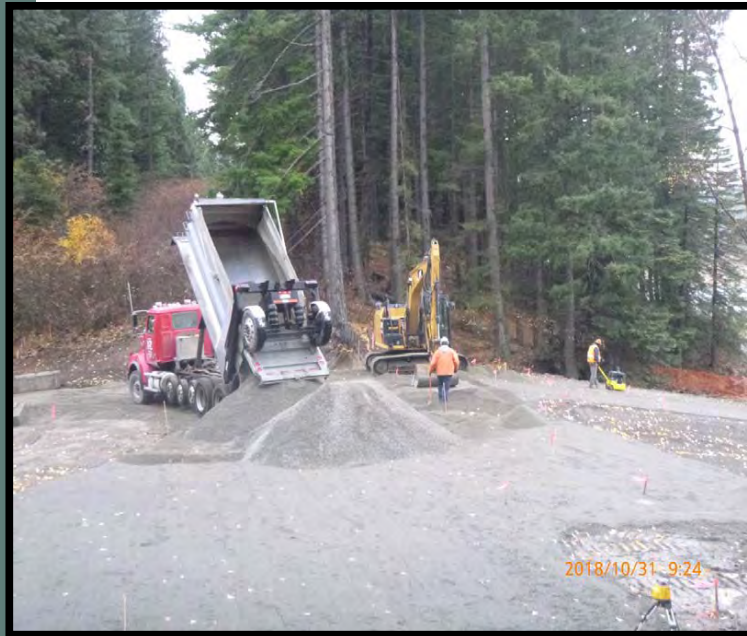


Anchored tree log installation, September 2018



Cle Elum Reservoir Shoreline Protection

Speelyi Day Use Area Construction



Raising Saddle Dike #2, September 2018



Cle Elum Reservoir Shoreline Protection

Speelyi Day Use
Area Construction



Installation of riprap along boat launch and vault toilet



Cle Elum Reservoir Shoreline Protection



Speelyi Day Use Area New Construction, not to scale

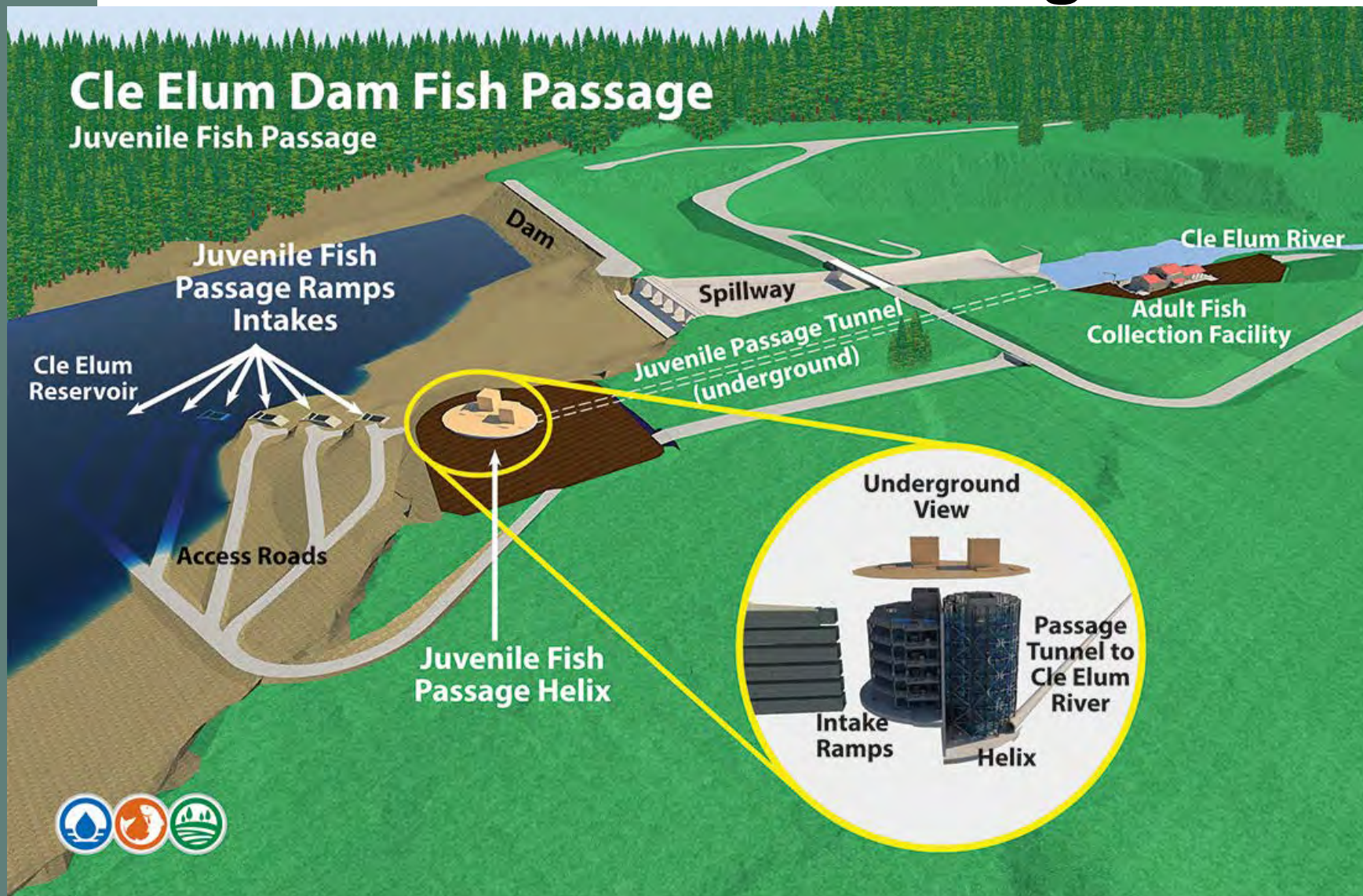


Cle Elum Dam Fish Passage Facilities

Reservoir Fish Passage



Cle Elum Dam Fish Passage



2013 - First Sockeye born, raised, and returned to the Yakima River Basin in over 100 years

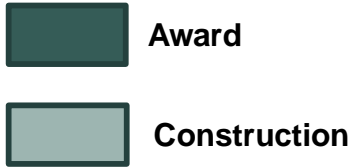
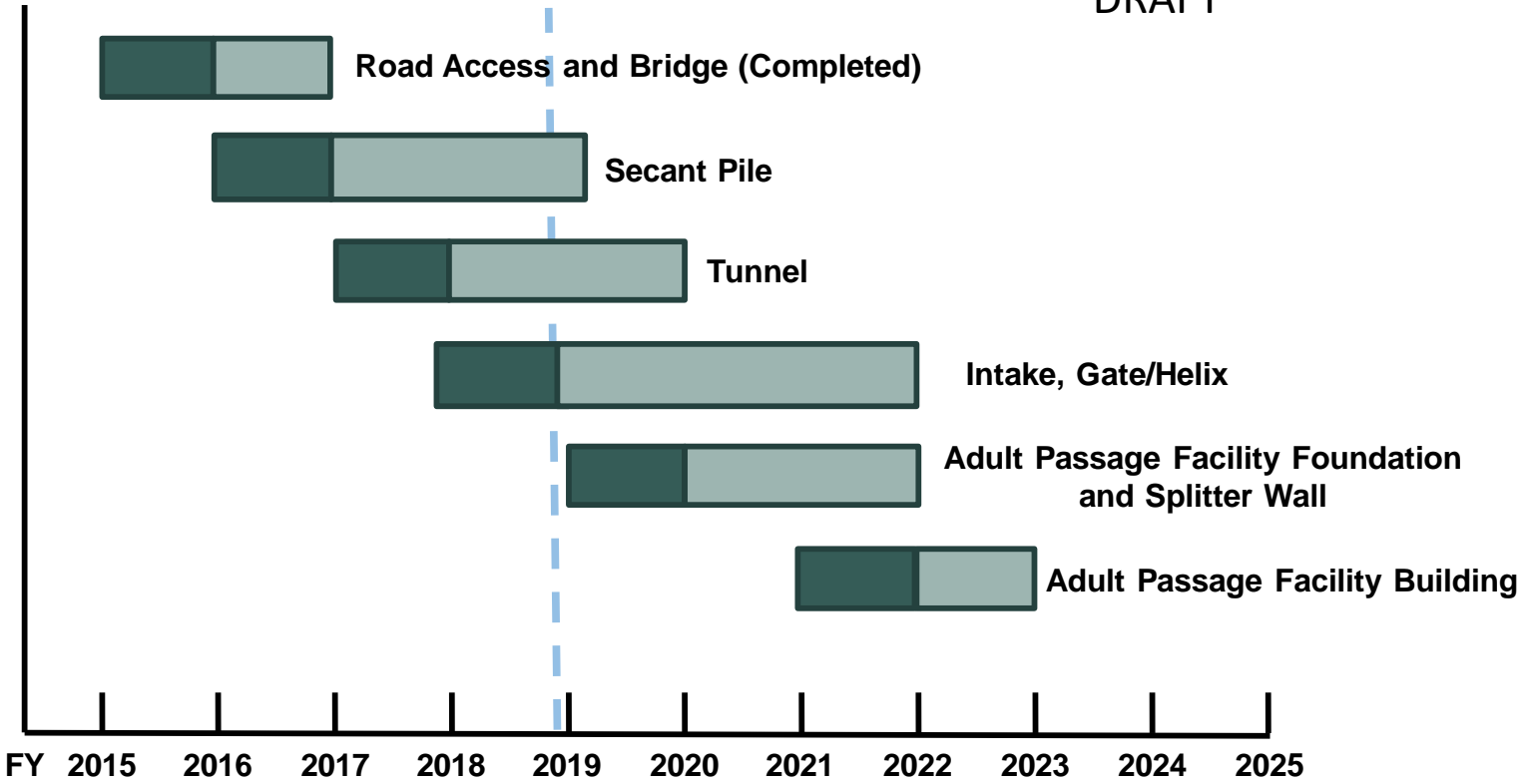
Update Sockeye Research



Cle Elum Dam Fish Passage Facilities Construction

Multiple Contracts Timeline

DRAFT



Approximate Current Date



Cle Elum Dam Fish Passage Construction

7/15/2014



7/13/2017



Secant Pile With Completed Cap Beam



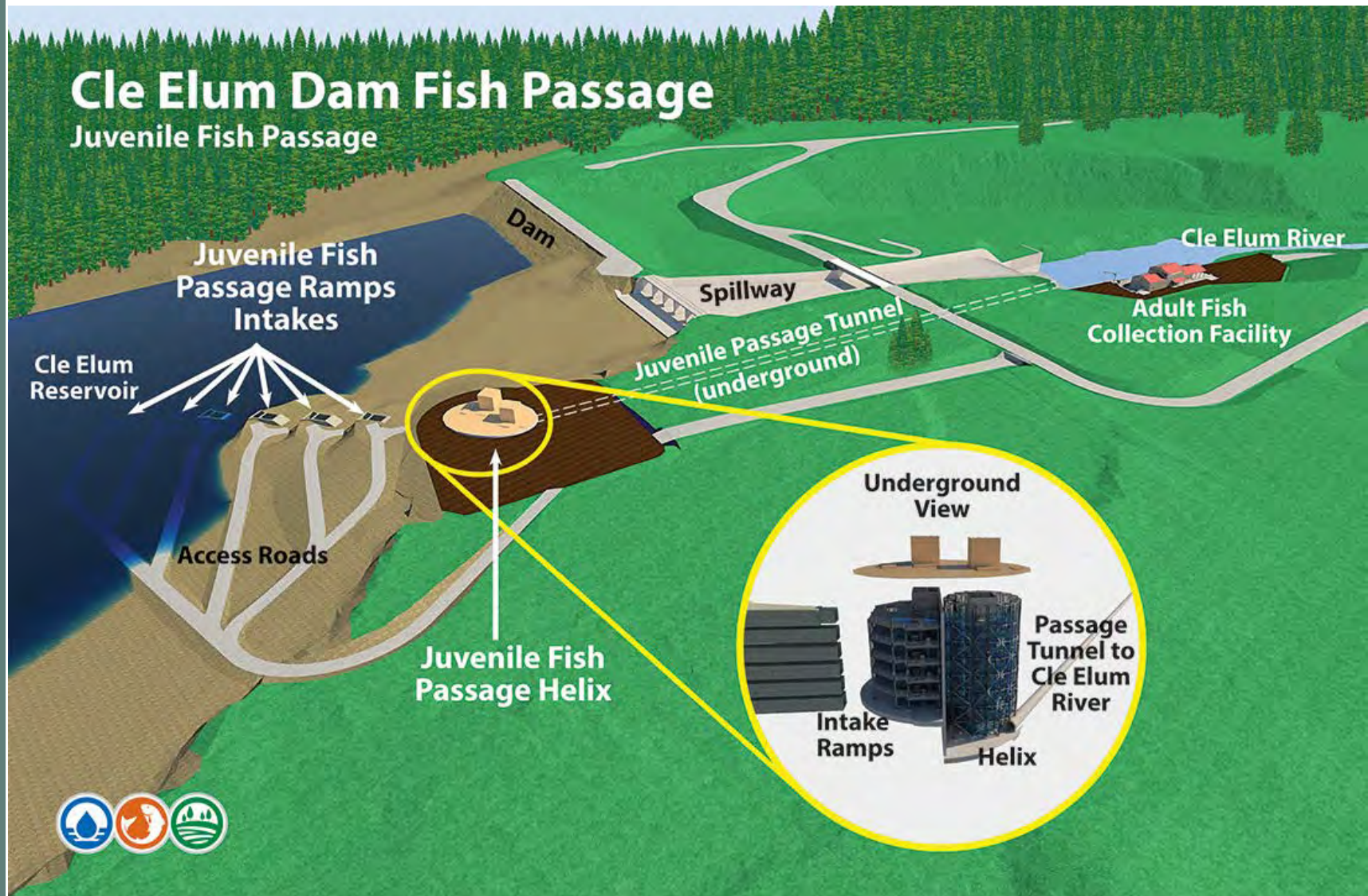
Secant Pile Contract – Complete



Completion of Cle Elum Secant Pile Contract
Cle Elum Dam Fish Passage Project, Washington
2016 – 2018



Tunnel Construction Status



Cle Elum Dam Fish Passage



Cle Elum Dam Fish Passage Tunnel Work



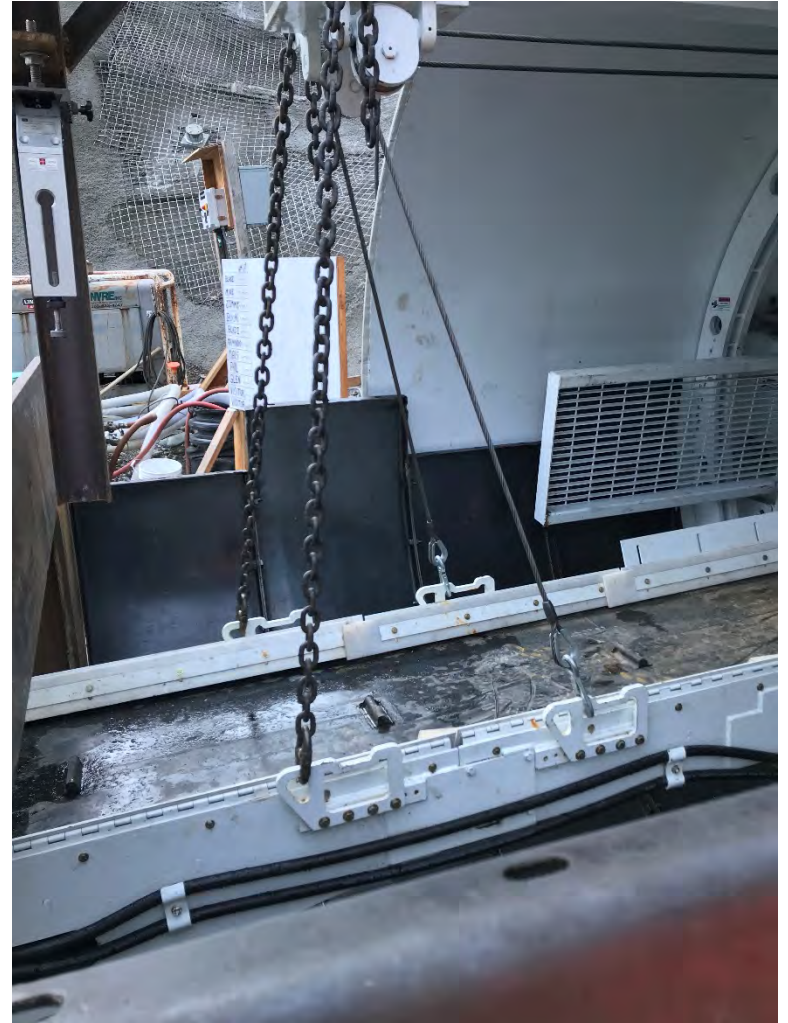
September 17, 2018



Tunnel Portal & Tunnel Excavation Machine (TEM) - November 2018



Tunnel Liner Installation



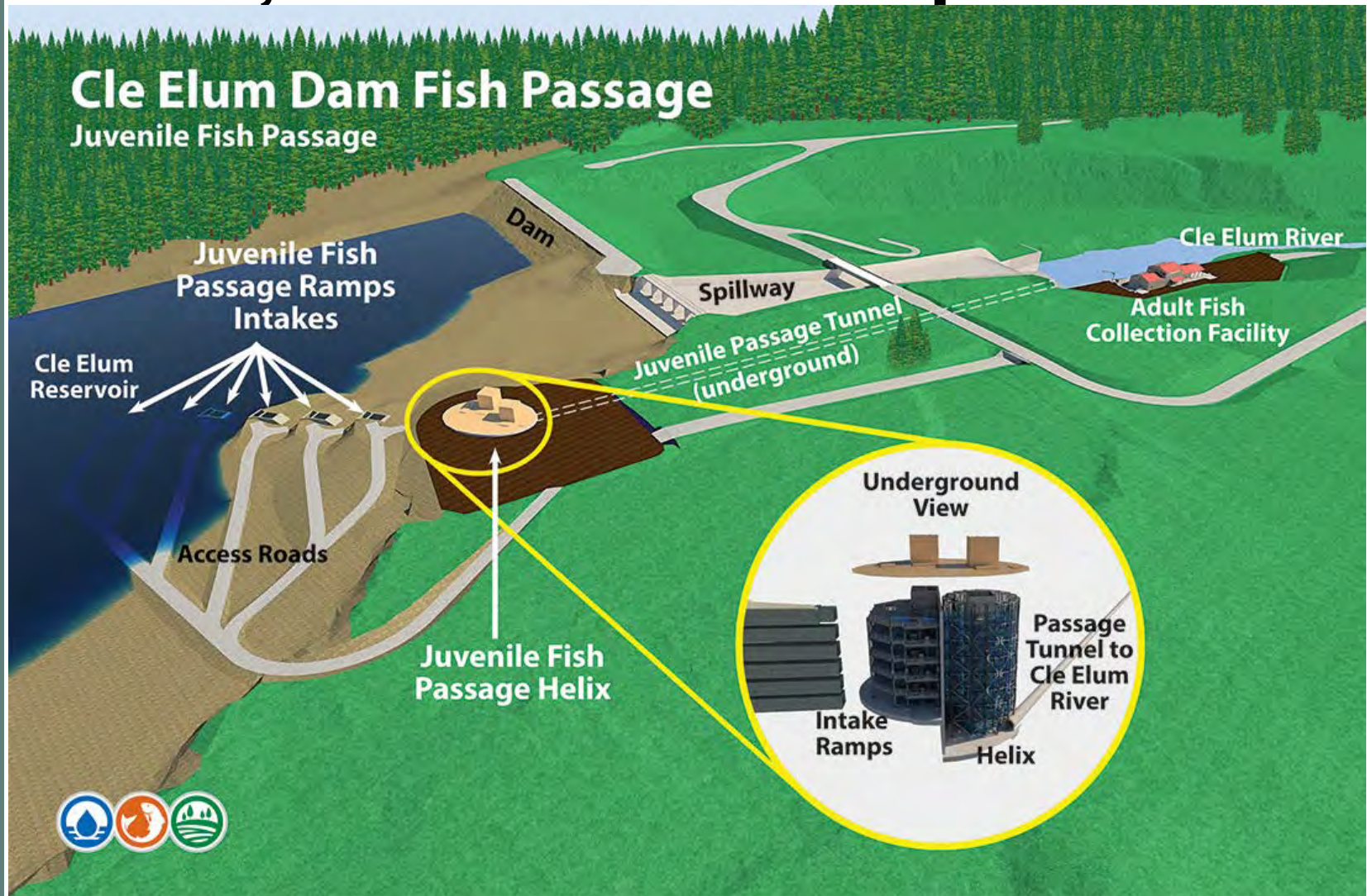
Tunnel Portal & Tunnel Excavation Machine



Work in Secant Vault – Under Tunnel Contract



Intake, Gate and Helix Update



Awarded September 2018

Approved Project Schedule December 2018

Onsite April 2019 – Hoping to Install Lower Intakes 2019



Cle Elum Fish Passage Wood Reuse About 700 Logs With Root Wads For Habitat



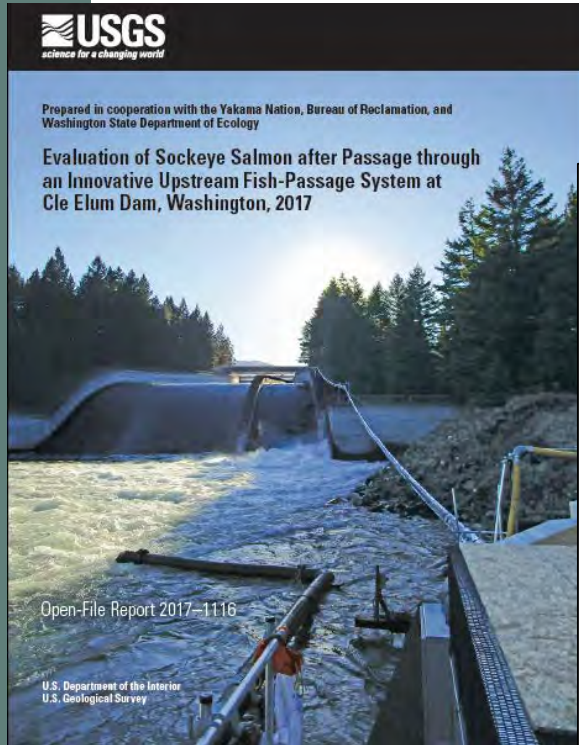
Wood Reuse Sites MCFEG on Swauk Ck. & Reclamation's Schaake Property Restoration



2019 Sockeye Research – Lower Yakima River to Roza Dam – Migration Movement and Temperature



Tobias Kock - USGS



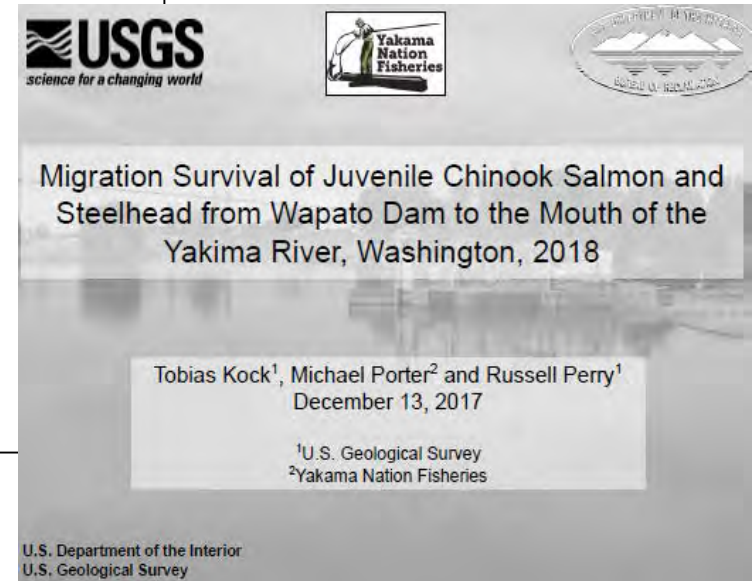
Prepared in cooperation with the Yakama Nation, Bureau of Reclamation and Washington State Department of Ecology

Behavior and Movement of Adult Sockeye Salmon from Roza Dam to Cle Elum Dam, Washington, 2018

By Tobias J. Kock, Scott D. Evans, Brian K. Ekstrom, and Amy C. Hansen



U.S. Department of the Interior
U.S. Geological Survey



Questions



For further information on the web:

<http://www.usbr.gov/pn/programs/yrbwep/2011integratedplan/>

<http://www.ecy.wa.gov/programs/wr/cwp/YBIP.html>

